

TRACT NO. 18160
 PRIVATE CONTRACT NO. 4170

W.S. 26
 9 SHEETS, 12 PAGES
 SCALE: VERT. 1"=4'
 HORIZ. 1"=40'
 OCT., 1956
 PREPARED IN THE OFFICES OF
 ENGINEERING SERVICE CORPORATION
 BY *E. R. Koenig*
 REG. C. E. NO. 3652
 FOR LEGEND SEE PLAN NO. S-A-64

LENNOX BLDG. DIST. NO. 7

- NOTES
- PROVIDE STAKE ON THE PROPERTY LINE OR PROPERTY LINES PRODUCED AT RIGHT ANGLES TO THE SEWER LINE AT THE CENTER LINE OF EACH MANHOLE.
 - NO REPRESENTATIVE OF THE COUNTY ENGINEER WILL SURVEY OR LAYOUT ANY PORTION OF THE WORK.
 - THE OWNER OR HIS AUTHORIZED REPRESENTATIVE SHALL FURNISH THE COUNTY ENGINEER WITH GRADE SHEETS AND STATION FOR ALL HOUSE LATERALS AND Y BRANCHES AND SHALL PROVIDE STAKES FOR THEM AT THEIR PROPER LOCATIONS WITH STATIONING AND PLAINLY MARKED. ANY CHANGE IN LOCATIONS SHALL BE INDICATED BY WORKING BY THE OWNER OR HIS REPRESENTATIVE.
 - NO REVISIONS SHALL BE MADE IN THESE PLANS WITHOUT THE APPROVAL OF THE COUNTY ENGINEER.
 - USE STANDARD MANHOLE FRAMES AND COVERS, S-A-117, EXCEPT AS NOTED.
 - USE STANDARD STRENGTH PIPE EXCEPT AS NOTED.
 - USE CEMENT MORTAR FOR ALL VITRIFIED CLAY PIPE JOINTS.
 - RESURFACE ALL TRENCH WITHIN PAVED AREA TO MEET L. A. COUNTY ROAD DEPT., OR CALIF. STATE HIGHWAY DEPT. REQUIREMENTS IN ACCORDANCE WITH PERMITS.
 - SHOULDER FOUR FEET OF SEWER AT POINTS OF INTERFERENCE WITH POLES, S-A-119.
 - HOUSE LATERALS TO BE CONSTRUCTED WITH INVERTS AT PROPERTY LINE 6 FEET BELOW CURB GRADE EXCEPT AS NOTED.
 - ALL STRUCTURES SHALL BE BRICK SEWER STRUCTURES, S-A-104, EXCEPT AS NOTED.
 - FOR ALLOWABLE LEAKAGE TEST USE FORMULA NO. 1 SPEC. SEC. III.
 - MANHOLE TOPS IN UNIMPROVED AREAS TO BE 4" ABOVE FINISHED GRADE.
 - THE PRIVATE ENGINEER IS TO FURNISH THE HOUSE LATERAL DEPTHS AT THE PROPERTY LINE BELOW THE TOP OF CURB ELEVATION FOR EACH HOUSE LATERAL, ON THE GRADE SHEET.
- IF BEFORE WORK CAN BE STARTED, THE CONTRACTOR MUST OBTAIN A PERMIT TO EXCAVATE IN CITY STREETS FROM THE CITY OF LOS ANGELES.

ENGINEERING SERVICE CORPORATION
 1127 W. WASHINGTON BLVD.
 LOS ANGELES 15, CALIF. RE. 9-7281

REVISIONS					
NO.	DESCRIPTION	DATE	SCALE	L.S.	P.B.
6401-50		Oct., 1956	As Noted	760	

TRACED BY _____
 DES'G'D BY _____
 CK'D BY _____
 SUBMITTED _____

SUB STRUCTURES OK'D

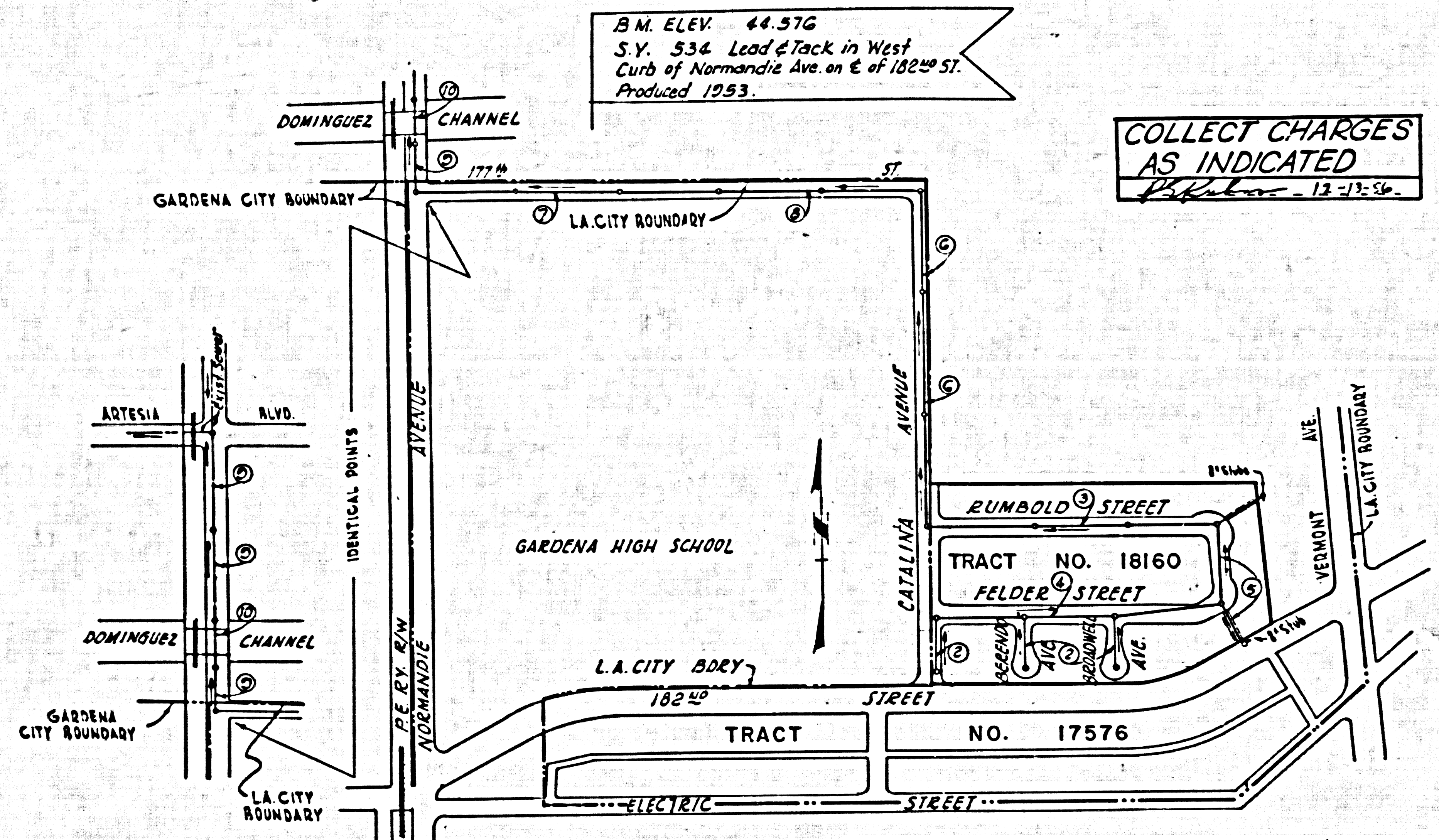
CITY OF LOS ANGELES

Submitted *May 6* 1957 Approved *May 7* 1957

E. R. Koenig
 Division or District Engineer

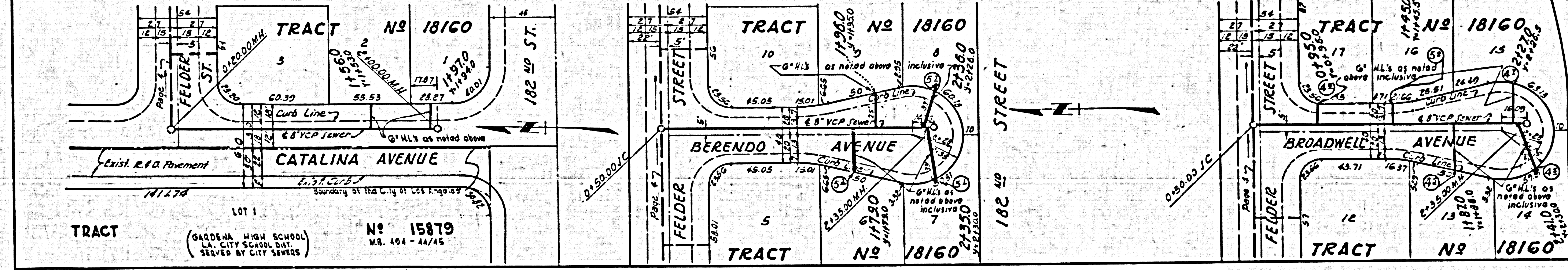
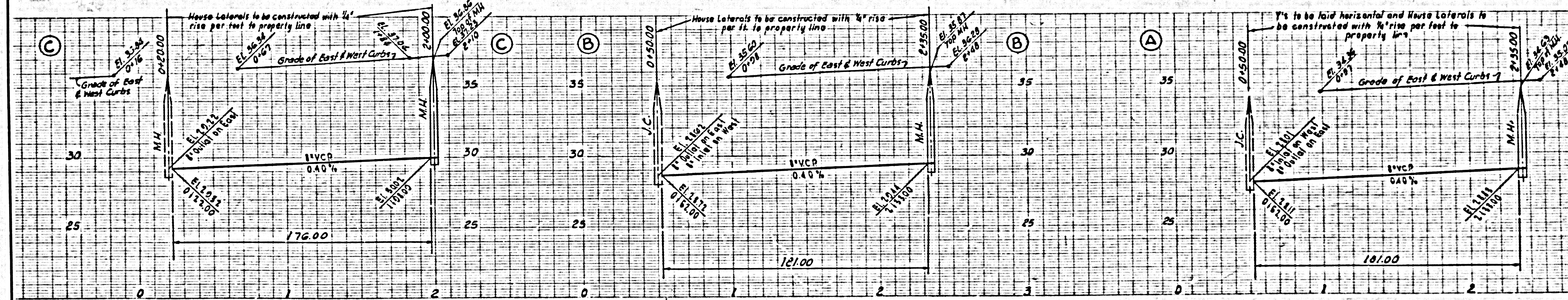
W. H. Rode
 City Engineer

ASSISTANT DEPUTY ENGINEER (DESIGN)



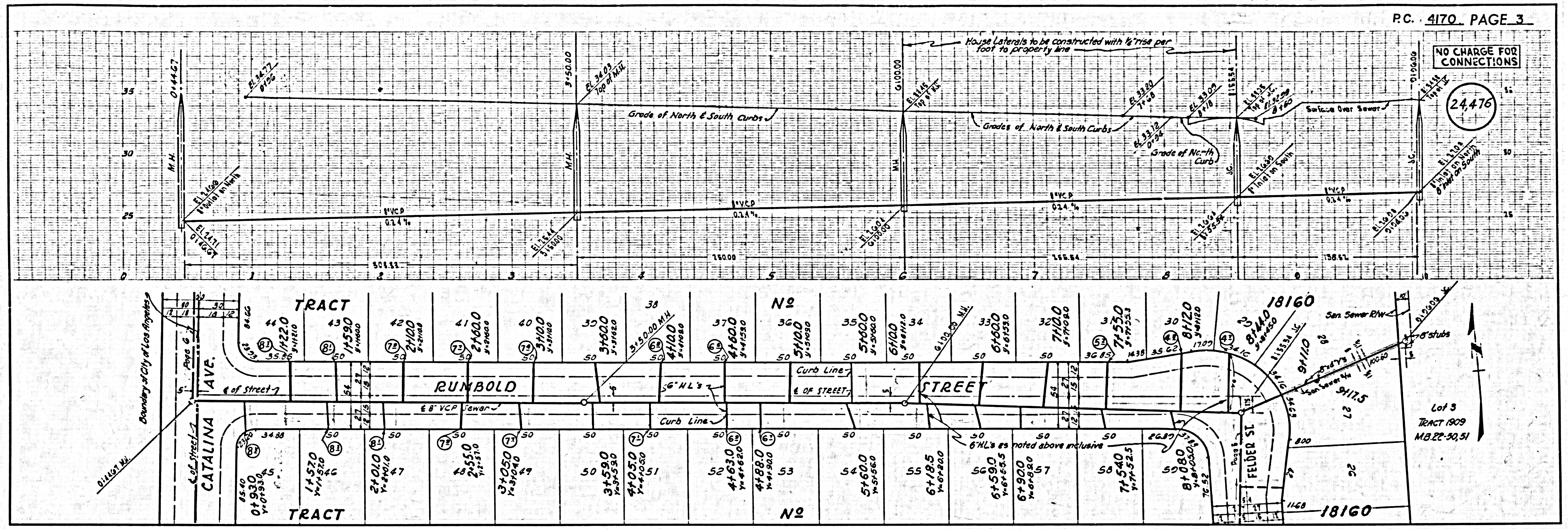
INDEX MAP
 SCALE: 1"=300'
 TRACT NO. 18160
 P.C. 4170

NO CHARGE FOR CONNECTIONS
 24475



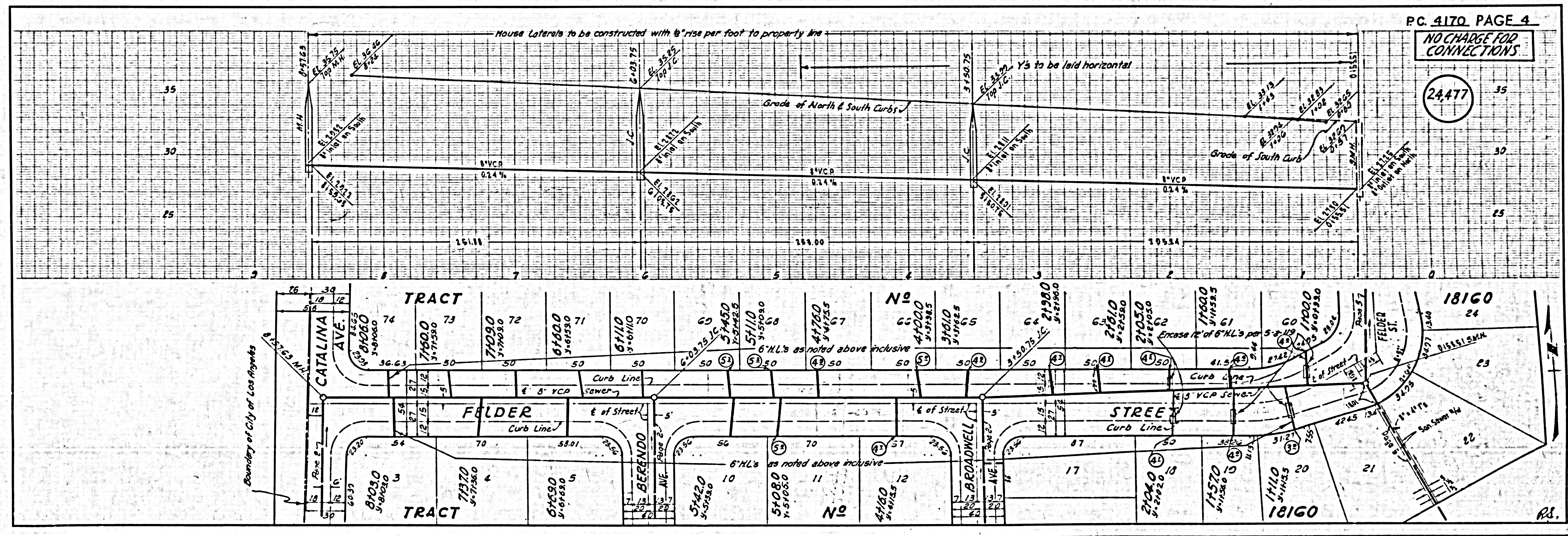
NO CHARGE FOR CONNECTIONS

24,476



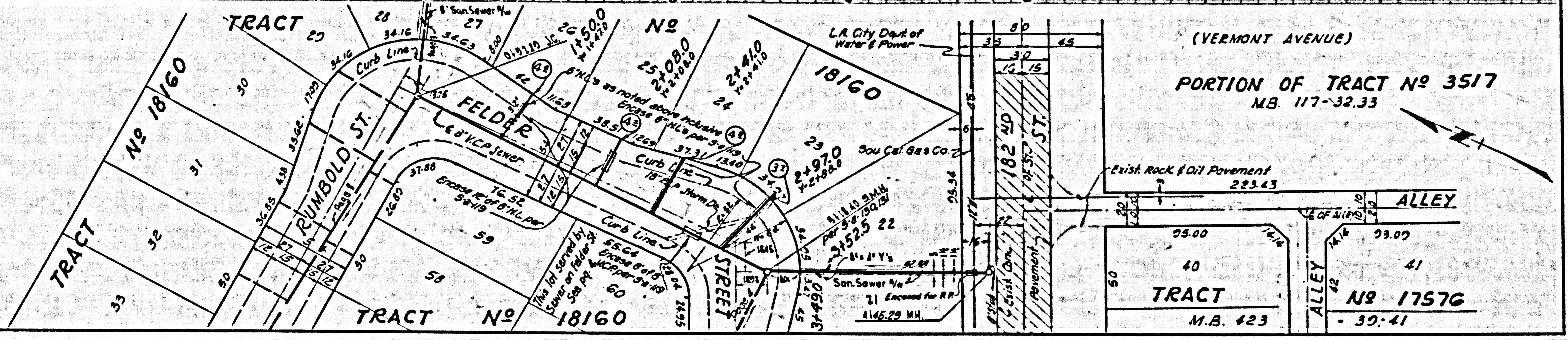
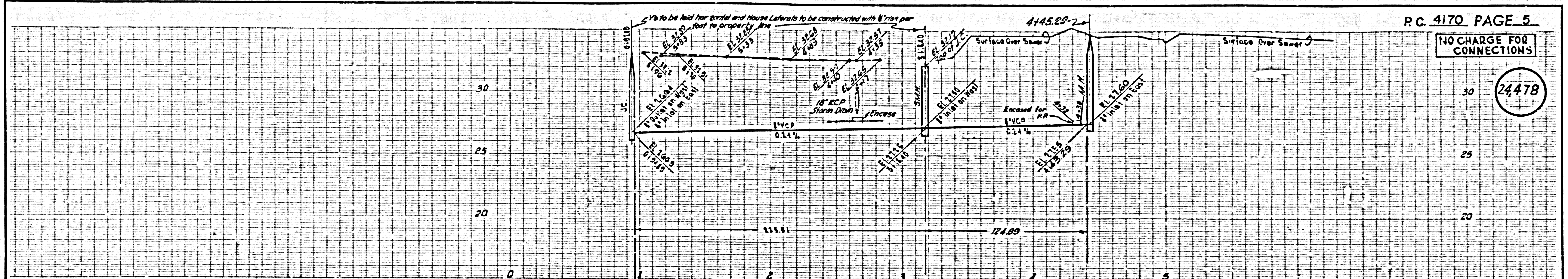
NO CHARGE FOR CONNECTIONS

24,477



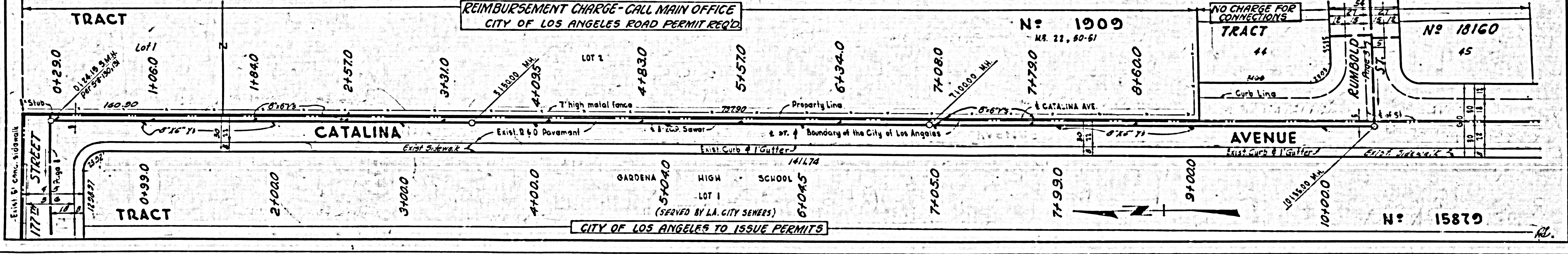
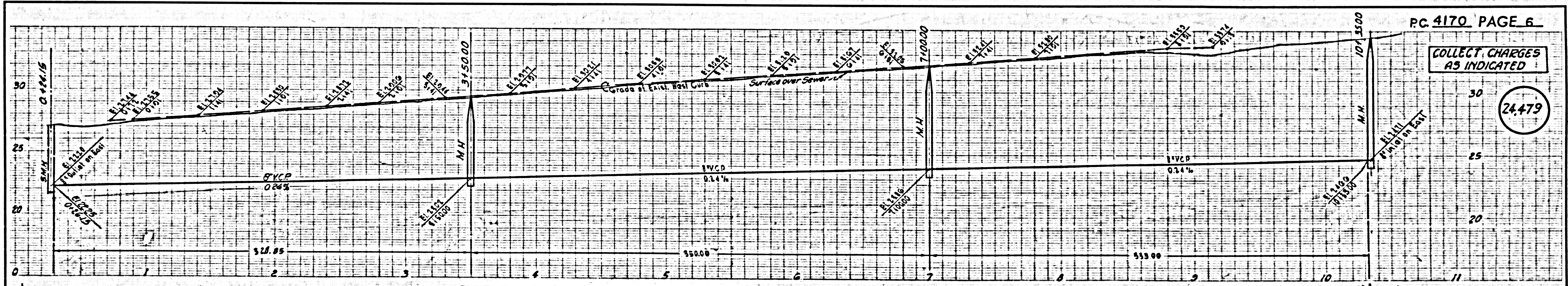
NO CHARGE FOR CONNECTIONS

24478

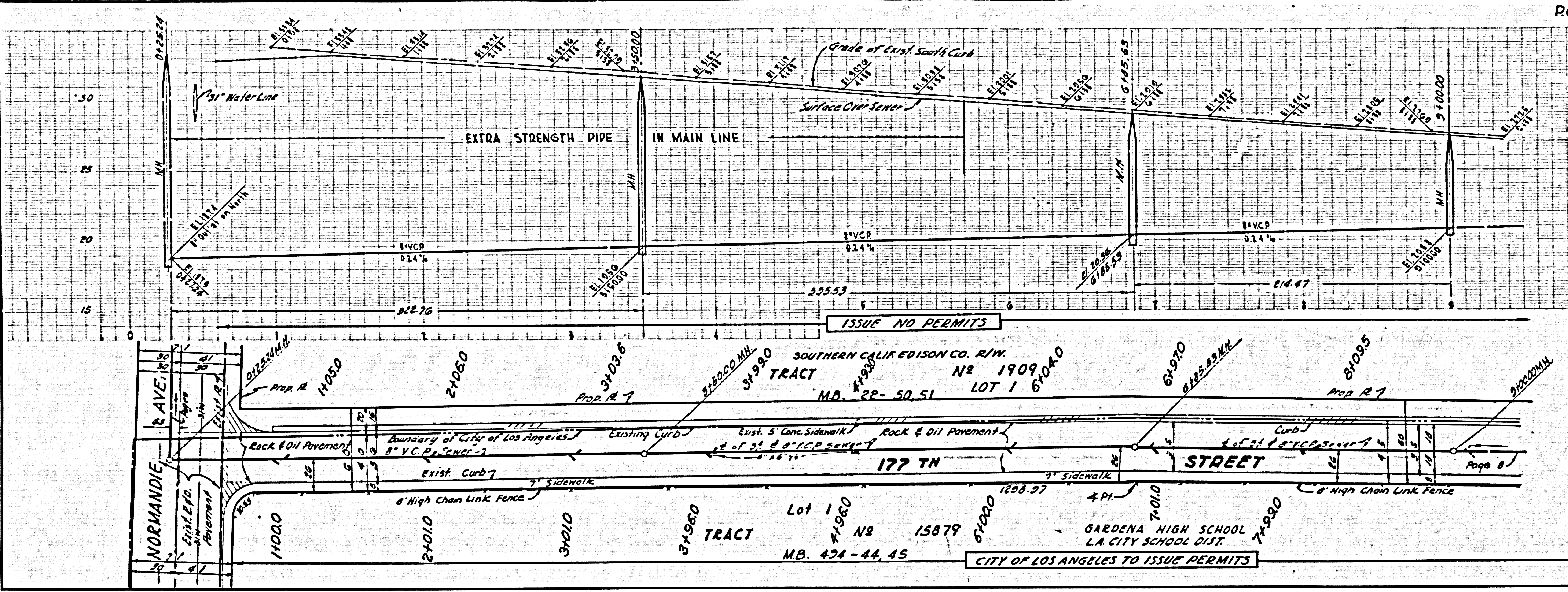


COLLECT CHARGES AS INDICATED

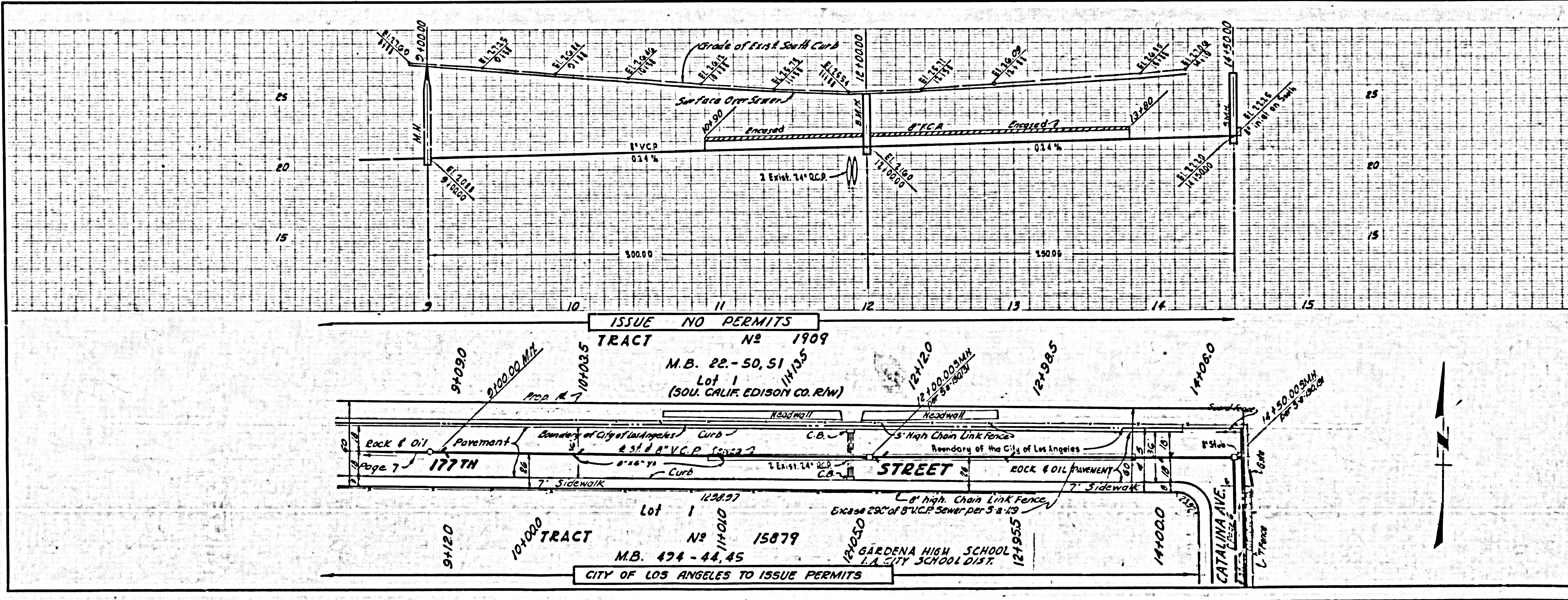
24479



24,480



24,481

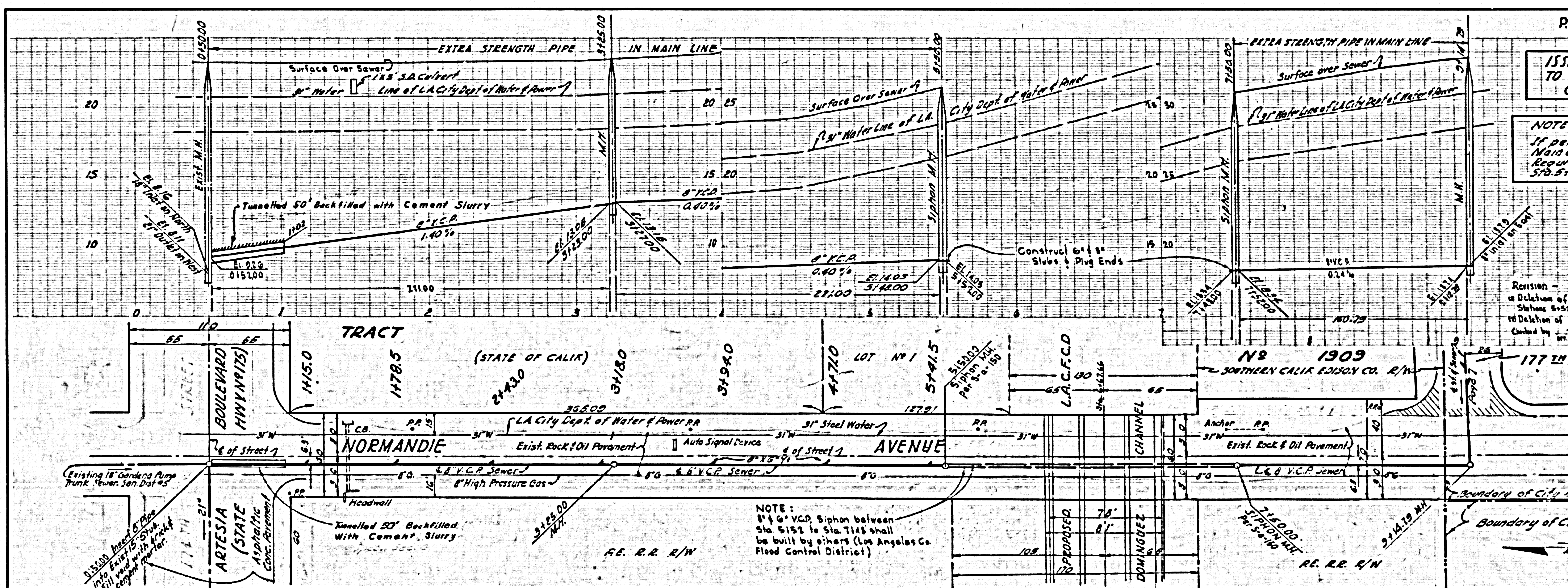


ISSUE NO PERMITS TO THIS PAGE - CALL MAIN OFFICE

NOTE: If permits authorized by Main Office - Running Traps Required between Sta. 0+5200 & Sta. 5+4800.25

24.482

Revision - as Detention of 8" & 6" Siphon between Stations 5+52 & 7+48 at Detention of Place 10 Control by S. K. Oude 2-257



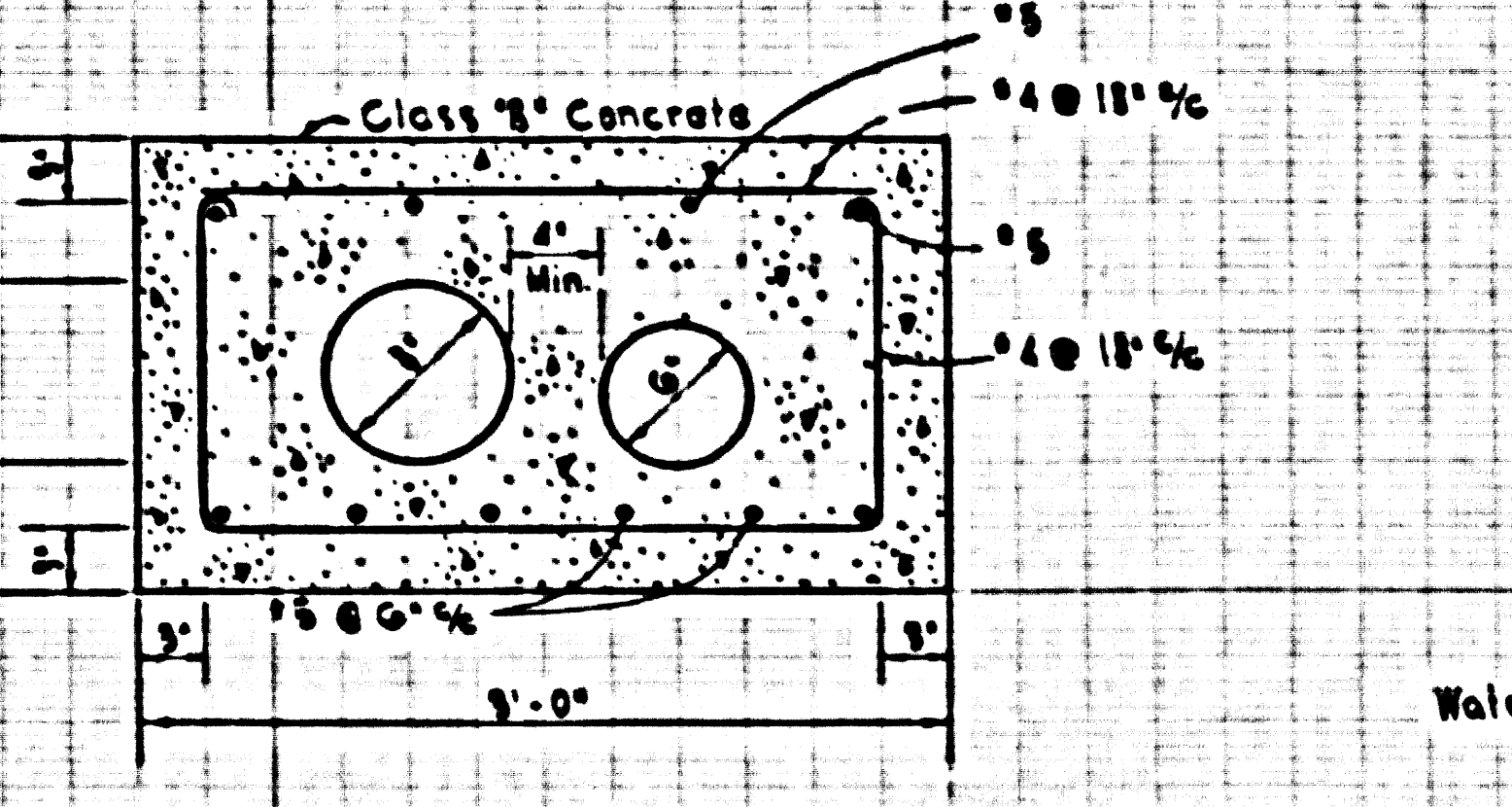
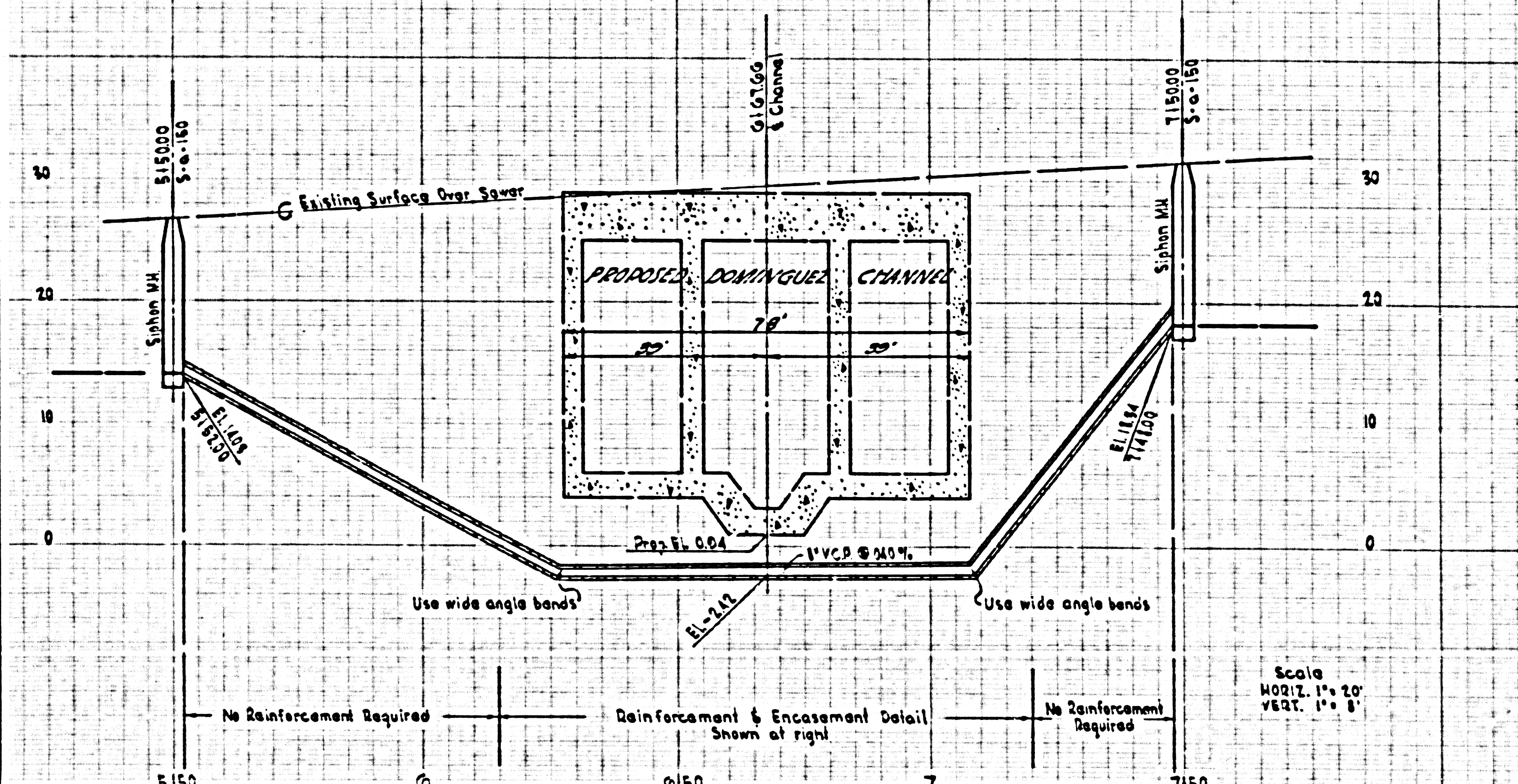
NOTE: 12" & 6" V.C.D. Siphon between Sta. 5+52 to Sta. 7+48 shall be built by others (Los Angeles Co. Flood Control District)

RL

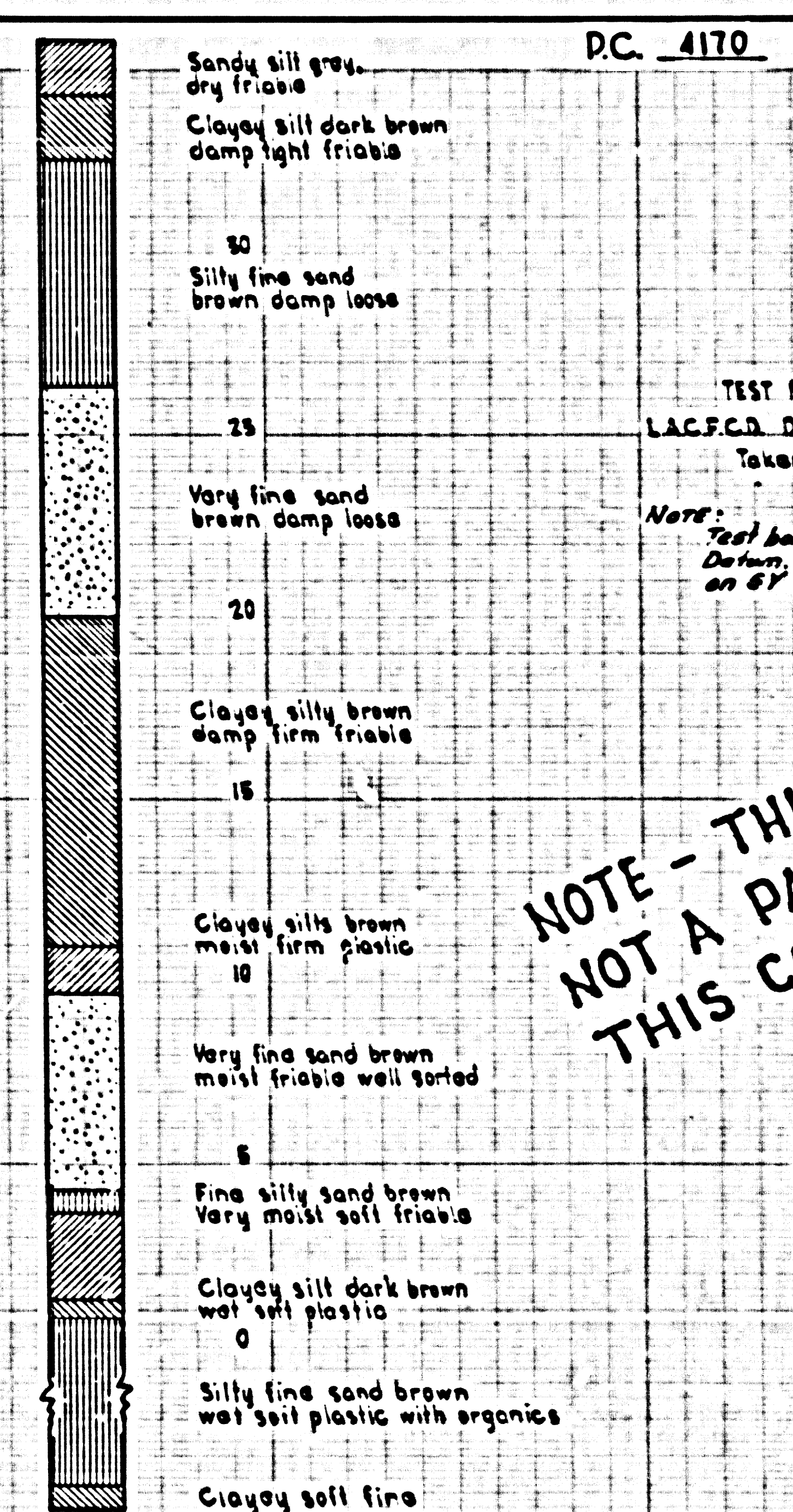
24,482
A

DETAIL OF SIPHON IN NORMANDIE AVE. PAGE 9 - STA. 5150.00 TO 7150.00

RM. DATA
LA. Co. Flood Control Dist. RM. 118-92
23' W/O & Normandie, 200' E/O &
PERM. tracks on & So. Cal. Edison
power line. Std. FC. disc with conc.
collar in 2" x 0" 18"
EL. 9339 FC. & EL. 9207 SY.



Scale
HORIZ. 1" = 20'
VERT. 1" = 8'



TEST BORING per
LAC.F.C.D. Drawing NE 21-D-100
Taken April 1959
Note: Test boring is on Flood Control
Datum, Submerged 0.52' to be
on 67' Datum

**NOTE - THIS PAGE
NOT A PART OF
THIS CONTRACT**

DC. 4170