

B.M.: S.G. 395 E. 343.053 (1952)
 C.S. Mon. & intersection,
 Franciscan & California Ave.

PUENTE BLDG. DIST. NO. 2

PROFILE ALIGNMENT AND GRADE OF
SANITARY SEWERS P.C. 4176
 TO BE CONSTRUCTED IN PAGE 1
 TRACT No 22679 (25.924)

PRIVATE CONTRACT NO. 4176

W.S. 58

1 SHEET 2 PAGES

SCALE: V.H. 1" = 40' Sept, 1936

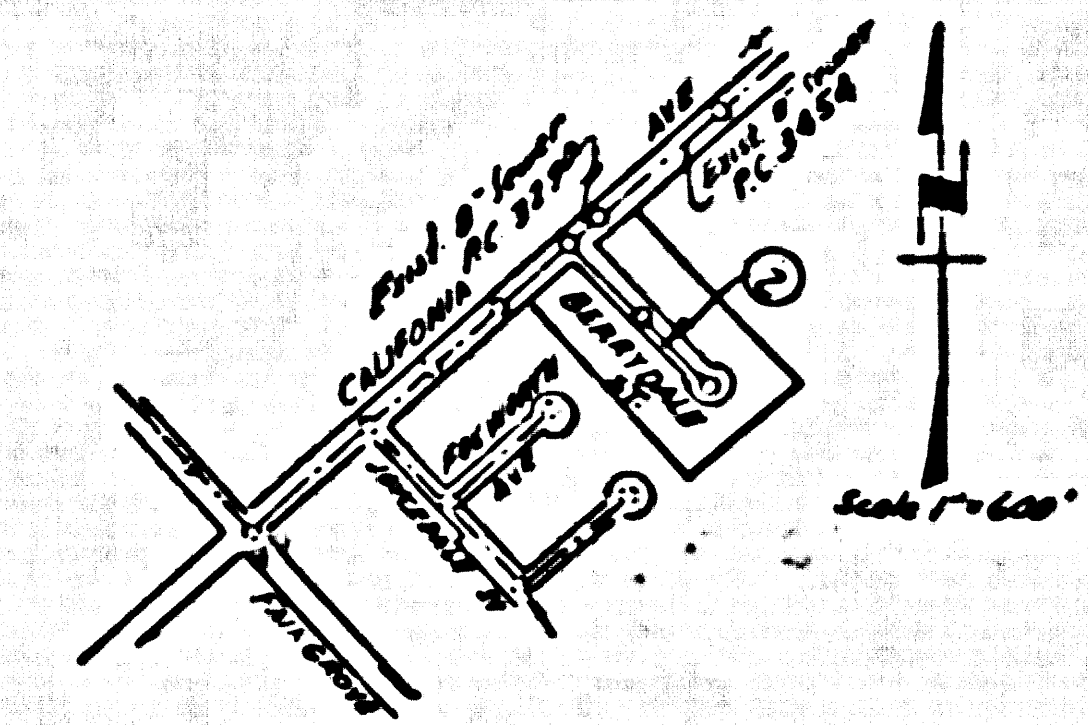
PREPARED IN THE OFFICES OF
 MUNNILEY-TUTTLE ENGR. CO.

By Paige O. Tunnally
 REG. C. E. NO. 8282

FOR LEGEND SEE PLAN NO. S-A-64

NO CHARGE FOR
 CONNECTIONS
 L. Collins 11-21-36

- NOTES
1. PROFILE STAGES ON THE PROPERTY LINE OR PROPERTY LINES PRODUCED AT RIGHT ANGLES TO THE SEWER LINE AT THE CENTER LINE OF EACH MANHOLE.
 2. NO REPRESENTATIVE OF THE COUNTY ENGINEER WHO SURVEY OR LAYOUT ANY PORTION OF THE WORK.
 3. THE OWNER OR HIS AUTHORIZED REPRESENTATIVE SHALL FURNISH THE COUNTY ENGINEER WITH GRADE SHEETS AND STATIONING FOR ALL HOUSE LATERALS AND Y BRANCHES AND SHALL PROVIDE STAGES FOR THE SAME AT THESE PROPER LOCATIONS WITH STATIONING PLAINLY MARKED. ANY CHANGE IN LOCATION SHALL BE REQUESTED IN WRITING BY THE OWNER OR HIS REPRESENTATIVE.
 4. NO REVISIONS SHALL BE MADE IN THESE PLANS WITHOUT THE APPROVAL OF THE COUNTY ENGINEER.
 5. USE STANDARD MANHOLE FRAMES AND COVERS, S-A-117, EXCEPT AS NOTED.
 6. USE STANDARD STRENGTH PIPE EXCEPT AS NOTED.
 7. USE CEMENT MORTAR FOR ALL VITRIFIED CLAY PIPE JOINTS.
 8. REINFORCE ALL TRENCH WITHIN PAVED AREA TO MEET L. A. COUNTY ROAD DEPT. OR CALIF. STATE HIGHWAY DEPT. SPECIFICATIONS IN ACCORDANCE WITH ORDINANCE.
 9. SHOW FOUR FEET OF SEWER AT POINTS OF INTERFERENCE WITH POLES, S-A-119.
 10. HOUSE LATERALS TO BE CONSTRUCTED WITHIN 4' OF THE R.E. PROPERTY LINE.
 11. ALL STRUCTURES SHALL BE BRICK SEWER STRUCTURES, S-A-104, EXCEPT AS NOTED.
 12. FOR ALLOWABLE SLAGAGE TEST USE FORMULA NO. 1, SPEC. SEC. 51.
 13. MANHOLE TOPS IN UNIMPROVED RIGHTS-OF-WAY TO BE 6" ABOVE FINISHED GRADE.
 14. The Private Engineer is to furnish the House Lateral depth of the Property Line below the top of Curb elevation for each House Lateral, on the grade sheet.



INDEX MAP
 TRACT No 22679
 P.C. 4176

NOTE

GRADE TO WHICH THIS IMPROVEMENT IS TO BE CONSTRUCTED AND SHOWN ON PLANS AND PROFILES. GRADE POINTS FOR TOP OF CURB, CENTER LINE OF STREET, OR CENTER LINE OF ALLEY ARE SHOWN IN CIRCLES ON PROFILES. AT ALL POINTS BETWEEN DESIGNATED POINTS THE GRADE SHALL BE ESTABLISHED SO AS TO CONFORM TO A STRAIGHT LINE DRAWN BETWEEN SAID DESIGNATED POINTS.

ELEVATIONS ARE IN FEET ABOVE U.S.C.G.S. SEA LEVEL DATUM OF 1929.

THIS DRAWING AND THE DATA HEREON ARE HEREBY MADE A PART OF THE SPECIFICATIONS.

WORK SHALL BE CONDUCTED ACCORDING TO SPECIFICATIONS ON FILE IN THE OFFICE OF THE COUNTY ENGINEER AND SHALL BE PROSECUTED ONLY IN THE PRESENCE OF THE COUNTY ENGINEER.

BEFORE WORK CAN BE STARTED, THE CONTRACTOR MUST OBTAIN A PERMIT TO EXCAVATE IN COUNTY STREETS FROM THE L. A. COUNTY ROAD DEPT., FOR W. 3RD ST. AND MAKE A DEPOSIT WITH THE COUNTY ENGINEER, ROOM 274 PAM AMERICAN BUILDING, 221 SO. BROADWAY, SUFFICIENT TO COVER THE COST OF CONSTRUCTION INSPECTION AND RECORD PLANS.

APPROVAL OF THIS PLAN BY THE COUNTY OF LOS ANGELES DOES NOT CONSTITUTE A REPRESENTATION AS TO THE ACCURACY OF THE LOCATION OF OR THE EXISTENCE OR NON-EXISTENCE OF ANY UNDERGROUND UTILITY PIPE, OR STRUCTURE WITHIN THE LIMITS OF THIS PROJECT. THIS NOTE APPLIES TO ALL PAGES.

NO WORK IS TO BE DONE IN A STATE HIGHWAY, A PERMIT SHALL BE OBTAINED FROM THE STATE OF CALIFORNIA, DIVISION OF HIGHWAYS, 120 BOWNE BRIDGE STREET.

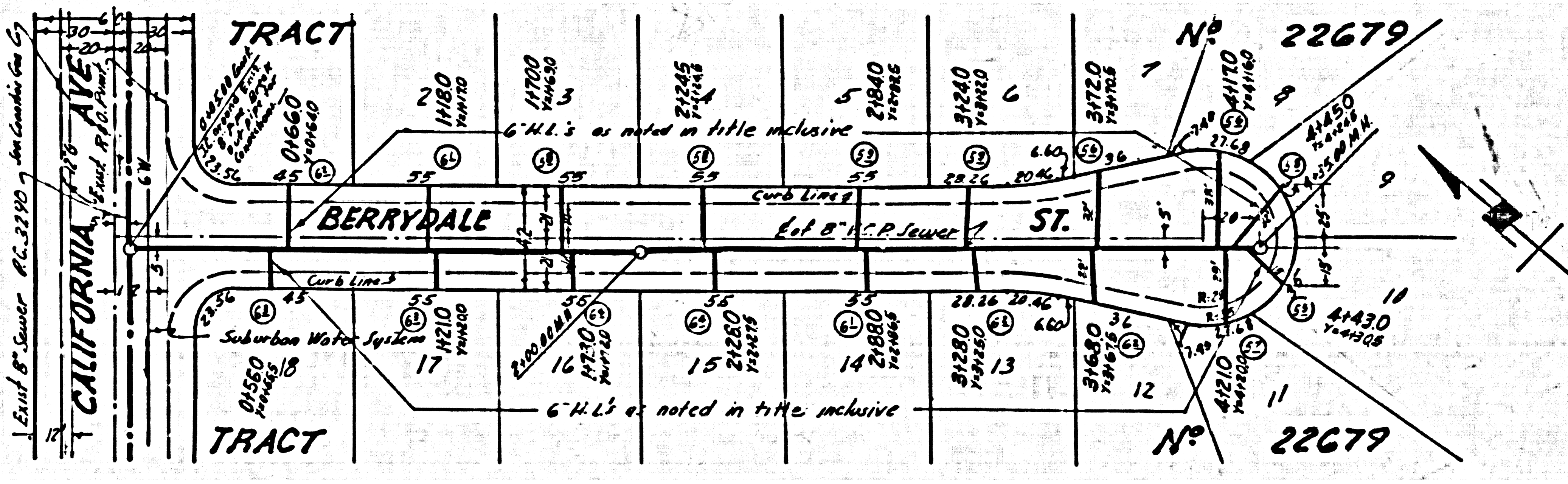
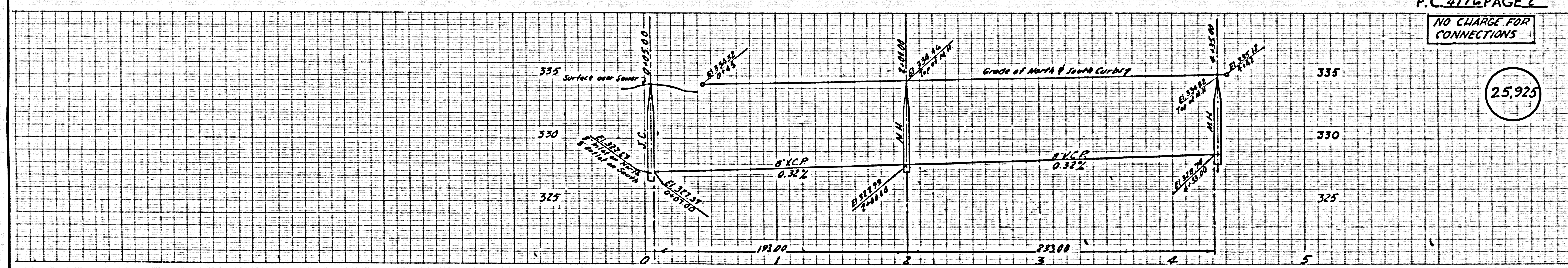
COUNTY OF LOS ANGELES, CALIFORNIA

APPROVED, JOHN A. LAMME, COUNTY ENGINEER
 APPROVED, A. M. RAWN, CHIEF ENGINEER
 BY A.P. Collins BY G. P. ...
 SANITARIAN ENGINEER OFFICE ENGINEER
 CHECKED BY P. ... 11-21-36
 OFFICE OF COUNTY ENGINEER, REG. C. E. NO. 7862

P.C. 4176 PAGE 2

NO CHARGE FOR
 CONNECTIONS

(25.925)



Bl.