

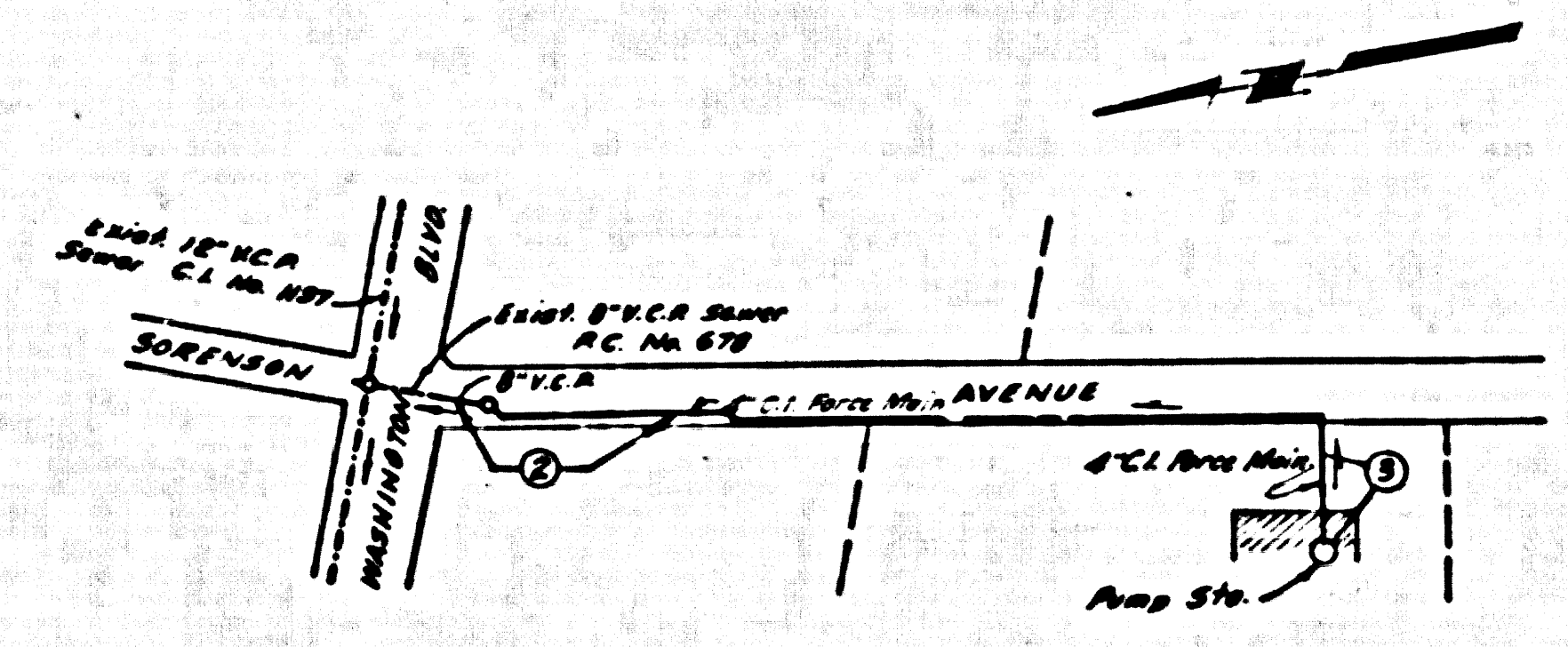
WHITTIER BLDG. DIST. NO. 11

PROFILE ALIGNMENT AND GRADE OF
SANITARY SEWERS
 TO BE CONSTRUCTED IN
SORENSEN AVENUE
FORCE MAIN AND
SEWAGE PUMP STATION
 PRIVATE CONTRACT NO.

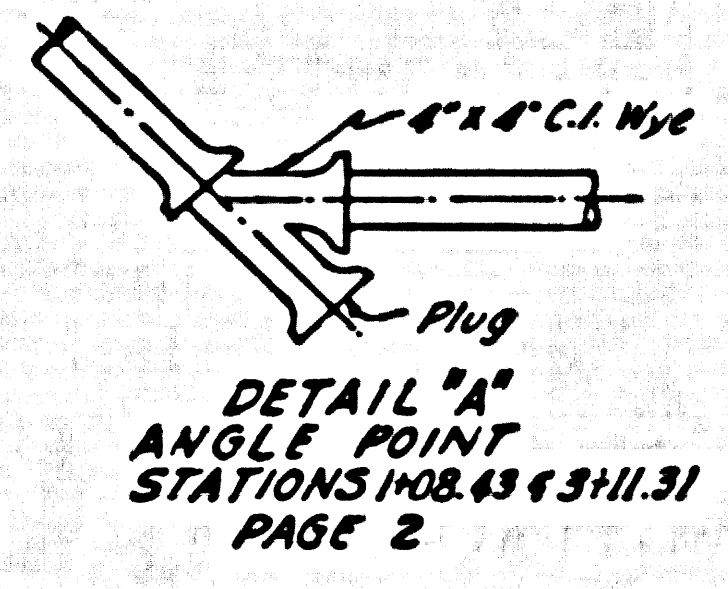
P.C. 4177
 PAGE 1
 (23,719)
 (3)

W.S. 37
 2 SHEETS, 3 PAGES
 SCALE: HORIZ. 1" = 40'
 VERT. 1" = 4'
 SEPT., 1956
 PREPARED IN THE OFFICES OF
KEMMERER ENGINEERING CO. INC.
 BY: *John C. Kemmerer*
 REG. C. E. NO. 2344
 FOR LEGEND SEE PLAN NO. S-A-64

- NOTES**
- PROVIDE STAKES ON THE PROPERTY LINE OR PROPERTY LINES PRODUCED AT RIGHT ANGLES TO THE SEWER LINE AT THE CENTER LINE OF EACH MANHOLE.
 - NO REPRESENTATIVE OF THE COUNTY ENGINEER WILL SURVEY OR LAYOUT ANY PORTION OF THE WORK.
 - THE OWNER OR HIS AUTHORIZED REPRESENTATIVE SHALL FURNISH THE COUNTY ENGINEER WITH GRADE SHEETS AND STATION FOR ALL HOUSE LATERALS AND BRANCHES AND SHALL PROVIDE STAKES FOR THEM AT THEIR PROPER LOCATIONS WITH STATIONING PLAINLY MARKED. ANY CHANGE IN LOCATION SHALL BE REQUESTED IN WRITING BY THE OWNER OR HIS REPRESENTATIVE.
 - NO REVISIONS SHALL BE MADE IN THESE PLANS WITHOUT THE APPROVAL OF THE COUNTY ENGINEER.
 - USE STANDARD MANHOLE FRAMES AND COVERS, S.A-117.
 - USE STANDARD STRENGTH PVP.
 - USE CEMENT MORTAR FOR ALL VITRIFIED CLAY PIPE JOINTS.
 - RESURFACE ALL TRENCH WITHIN PAVED AREA TO MEET L. A. COUNTY ROAD DEPT. OR CALIF. STATE HIGHWAY DEPT. REQUIREMENTS IN ACCORDANCE WITH PERMITS.
 - DISCASE FOUR FEET OF SEWER AT POINTS OF INTERFERENCE WITH POLES, S.A-119.
 - MANHOLE APPROVALS TO BE OBTAINED FROM THE COUNTY ENGINEER AND THE STATE HIGHWAY DEPT. OR CALIF. STATE HIGHWAY DEPT. BEFORE WORK CAN BE STARTED.
 - ALL STRUCTURES SHALL BE BRICK SEWER STRUCTURES, S.A-194.
 - FOR ALLOWABLE SEALAGE TEST USE FORMULA NO. 1, SPEC. SEC. 34.
 - MANHOLE TOPS IN UNIMPROVED RIGHTS-OF-WAY TO BE 4" ABOVE FINISHED GRADE.
 - USE LEAD AND GUNNIN FOR ALL CAST LEAD PIPE JOINTS UNLESS OTHERWISE NOTED.

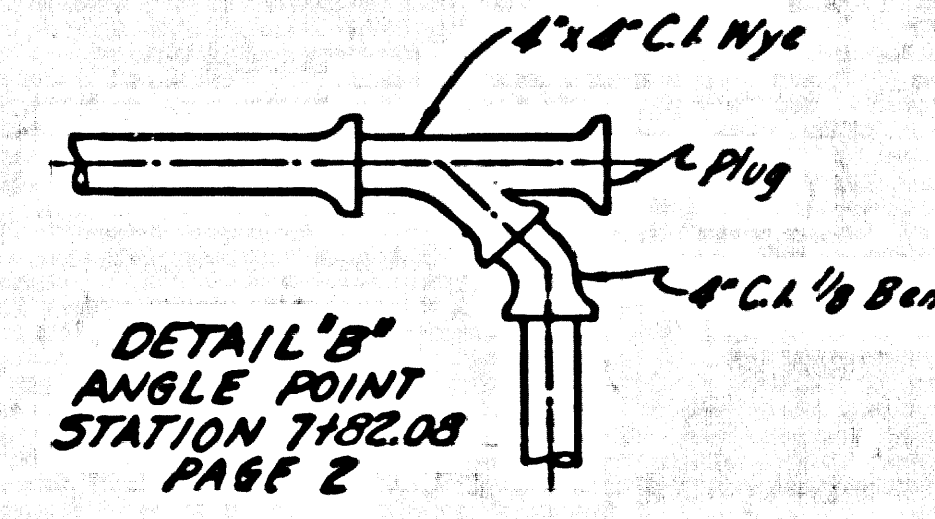


INDEX MAP
 SCALE: 1" = 200' P.C. 4177



DETAIL "A"
 ANGLE POINT
 STATIONS 108.43 + 111.31
 PAGE 2

B.M. 80-59-EB-1176 A 131
 WASHINGTON BLVD. & SORENSON AVE.
 S.E. COR. L. & N. IN CONC. WALL 154' E.
 AND 30' S. OF & INT. EL. 157.212



DETAIL "B"
 ANGLE POINT
 STATION 792.08
 PAGE 2

ALLOW NO CONNECTIONS
 TO THE FORCE MAIN
10-9-56

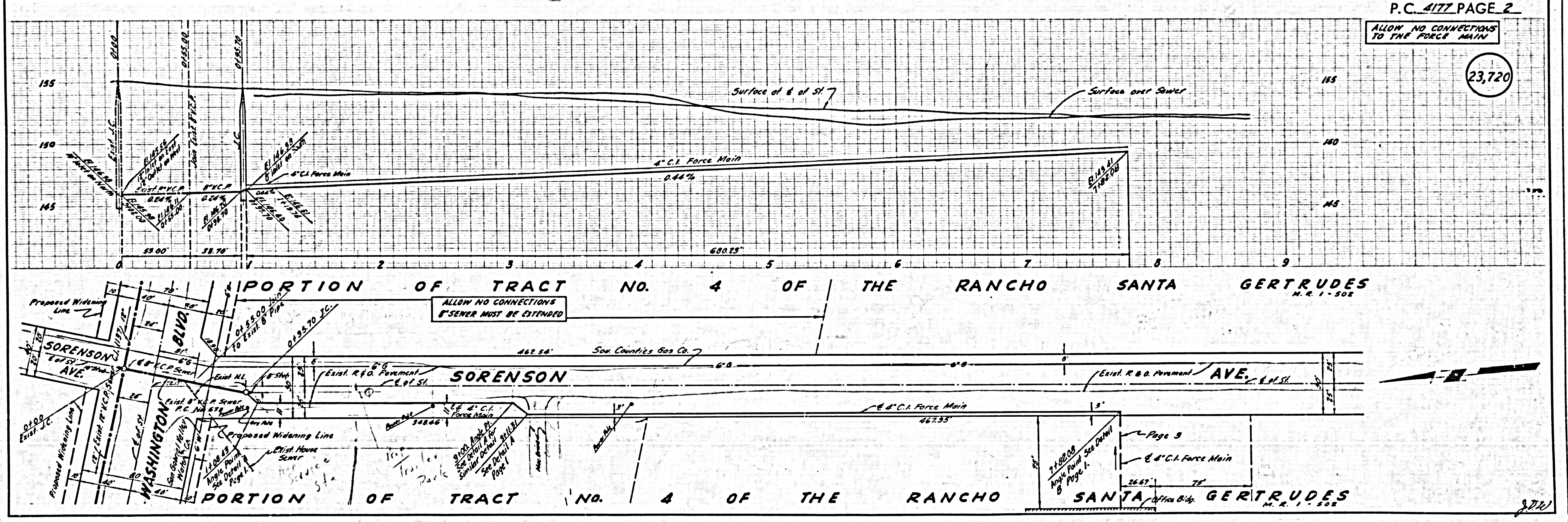
REVISION:
 Relocate a portion of Force Main - Pg. 2
 Approved: *[Signature]* 10-11-56
 Office of the County Engineer, Reg. C.E. 5466
 APPROVED: *[Signature]* 11/4/56
 ASST. INDUSTRIAL WASTE ENGINEER

checked 12-3-56 *[Signature]*

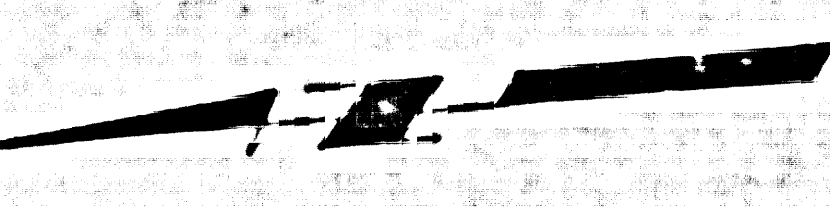
NOTE
 GRADES TO WHICH THIS IMPROVEMENT IS TO BE CONSTRUCTED ARE SHOWN ON PLANS AND PROFILE GRADE POINTS FOR TOP OF CURB, CENTER LINE OF STREETS, OR CENTER LINE OF ALLEYS ARE SHOWN BY CIRCLES ON PROFILES AT ALL POINTS BETWEEN DESIGNATED POINTS. THE GRADES SHALL BE ESTABLISHED SO AS TO CONFORM TO A STRAIGHT LINE DRAWN BETWEEN SAID DESIGNATED POINTS.
 ELEVATIONS ARE IN FEET ABOVE U.S.C. & G.S. MEAN LEVEL, UNLESS OTHERWISE NOTED.
 THESE DRAWINGS AND THE DATA HEREON ARE HEREBY MADE A PART OF THE SPECIFICATIONS.
 WORK SHALL BE CONSTRUCTED ACCORDING TO SPECIFICATIONS ON FILE IN THE OFFICE OF THE COUNTY ENGINEER AND SHALL BE PROSECUTED ONLY IN THE PRESENCE OF THE COUNTY ENGINEER.
 BEFORE WORK CAN BE STARTED, THE CONTRACTOR MUST OBTAIN A PERMIT TO EXCAVATE IN COUNTY STREETS FROM THE L. A. COUNTY ROAD DEPT., 188 W. 2ND ST. AND MAKE A REPORT WITH THE COUNTY ENGINEER, ROOM 324 PAVAN AMERICAN BLDG., 128 SO. BROADWAY, SUPERVISOR TO COVER THE COST OF CONSTRUCTION INSPECTION AND RECORD PLANS.
 APPROVAL OF THIS PLAN BY THE COUNTY OF LOS ANGELES DOES NOT CONSTITUTE A REPRESENTATION AS TO THE ACCURACY OF THE LOCATION OR OF THE EXISTENCE OR NON-EXISTENCE OF ANY UNDERGROUND UTILITY PIPE, OR STRUCTURE WITHIN THE LIMITS OF THIS PROJECT. THIS NOTE APPLIES TO ALL PAGES.
 IF WORK IS TO BE DONE IN A STATE HIGHWAY, A PERMIT MUST BE OBTAINED FROM THE STATE OF CALIFORNIA, DIVISION OF HIGHWAYS, 128 SOUTH SPRING STREET.

COUNTY OF LOS ANGELES, CALIFORNIA
 APPROVED, JOHN A. LAMBE, COUNTY ENGINEER
 APPROVED, A. M. RAWIN, CHIEF ENGINEER
 BY: *A.P. Collins* BY: *[Signature]*
 SANITATION ENGINEER CHIEF ENGINEER
 CHECKED BY: *[Signature]* 10-9-56
 OFFICE OF COUNTY ENGINEER, REG. C. E. NO. 7860

P.C. 4177 PAGE 2



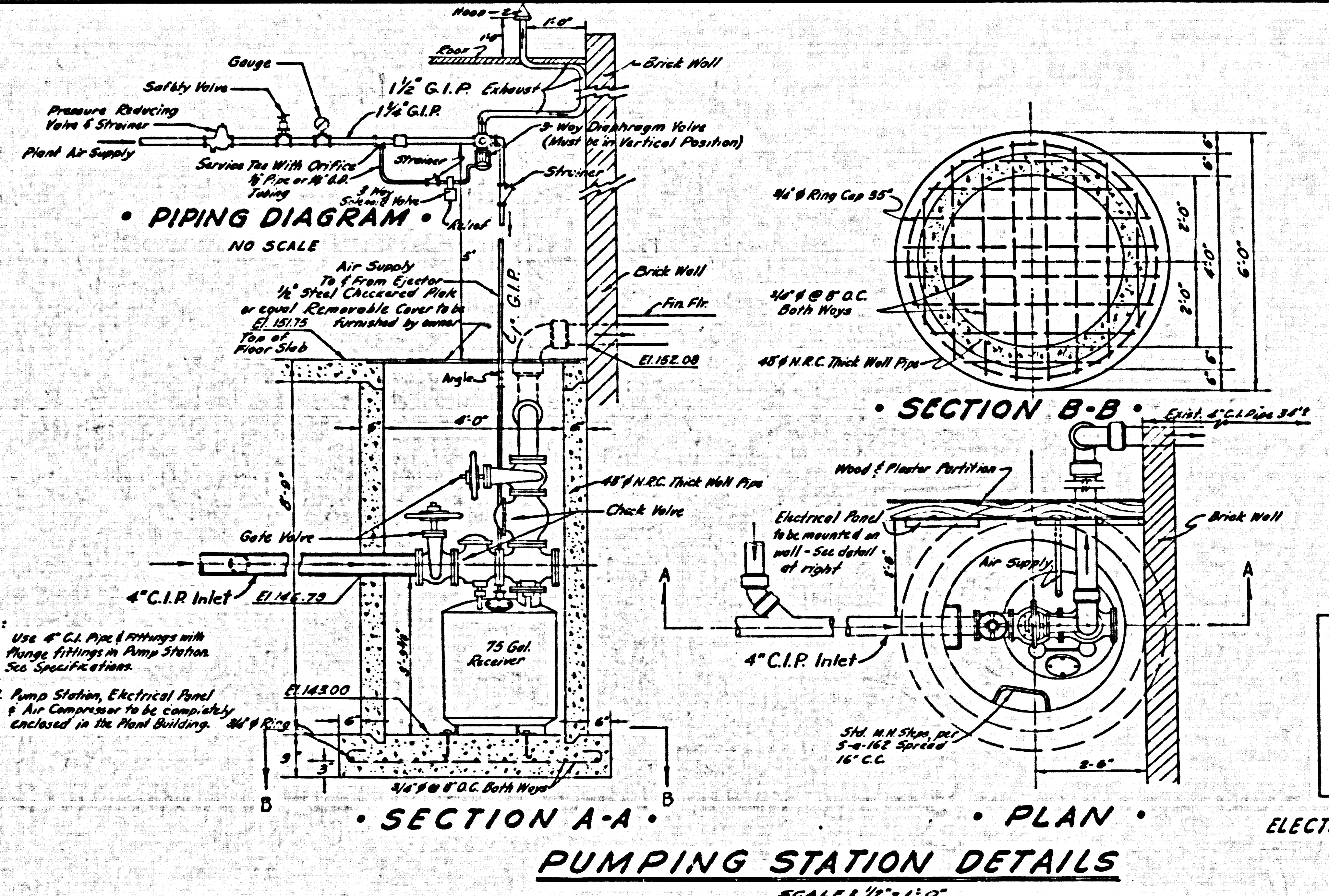
ALLOW NO CONNECTIONS
 TO THE FORCE MAIN
 (23,720)



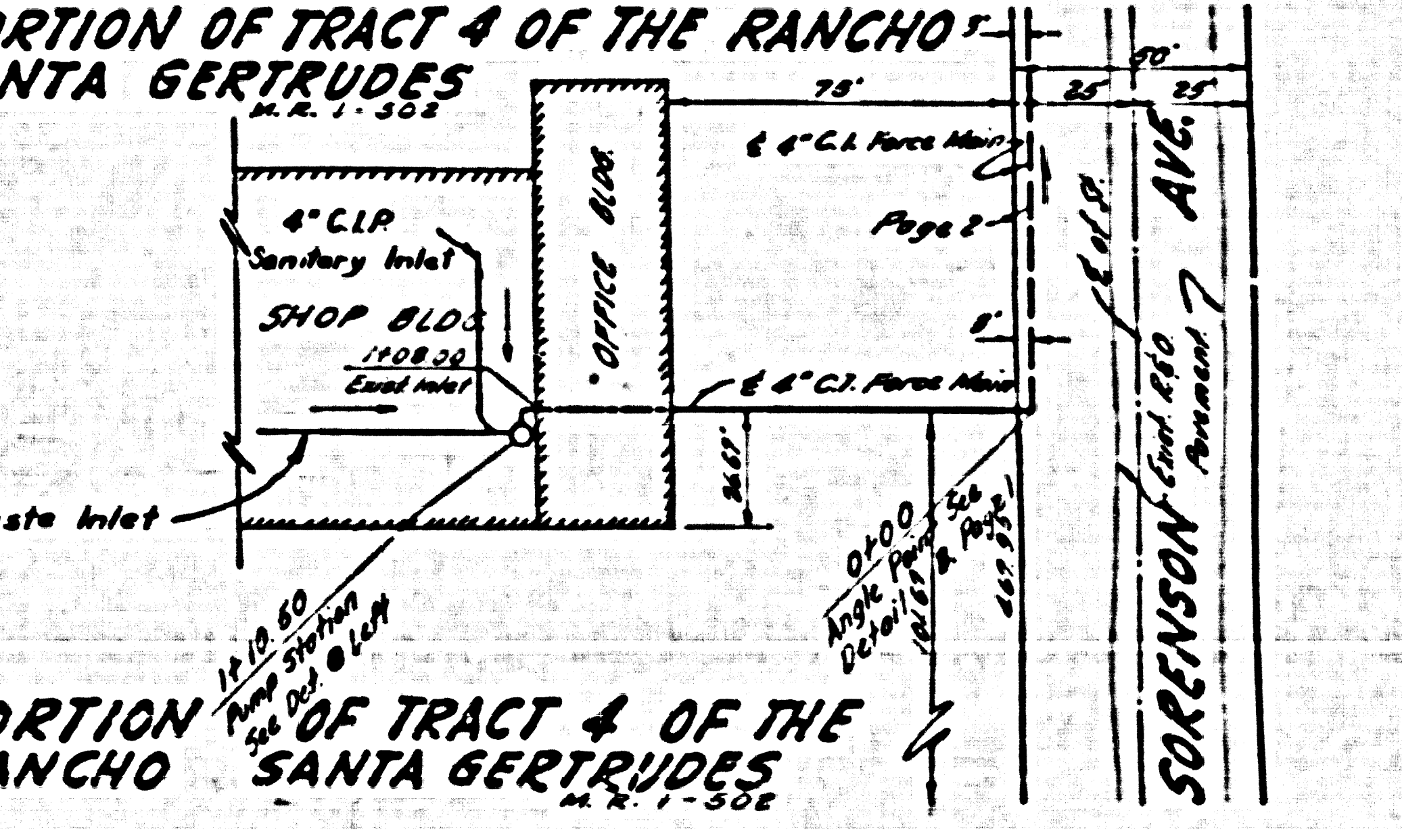
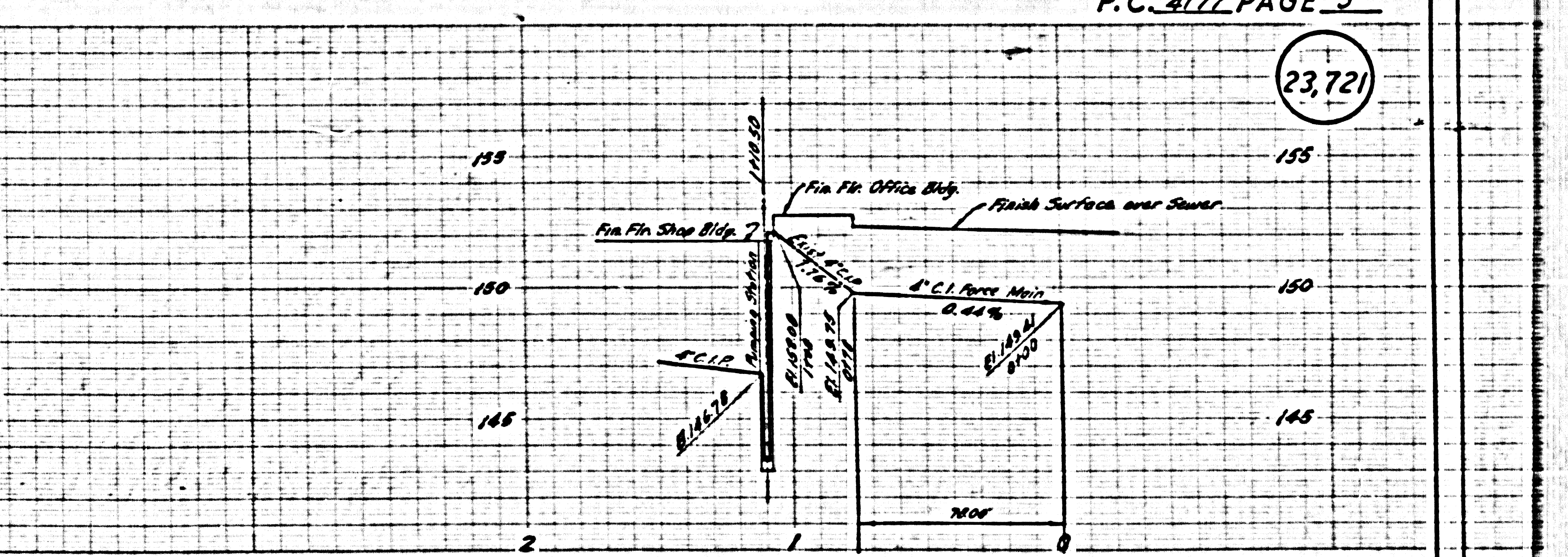
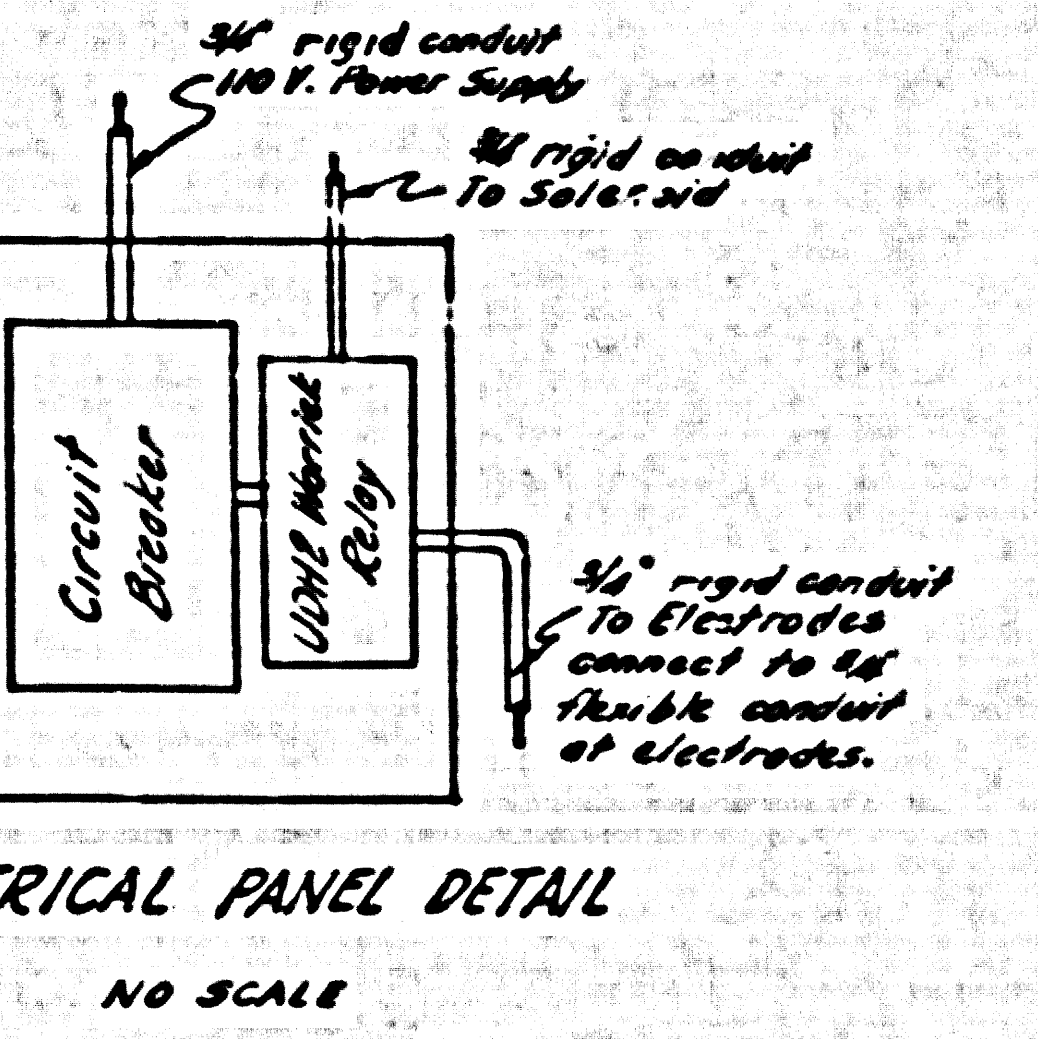
DETAIL

872

23,721



NOTE:
1. Use 4" C.I. Pipe & fittings with flange fittings in Pump Station. See Specifications.
2. Pump Station, Electrical Panel & Air Compressor to be completely enclosed in the Plant Building.



604133