

LANCASTER BLDG. DIST. NO. 8

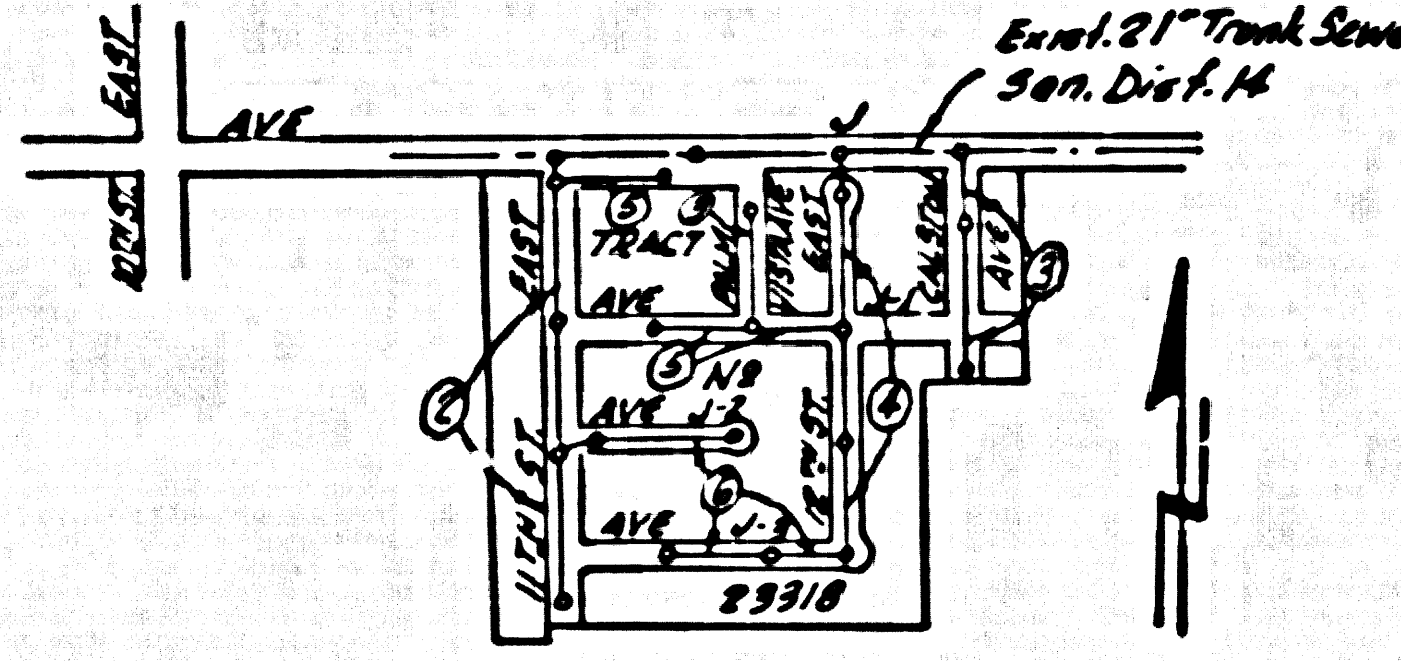
PROFILE ALIGNMENT AND GRADE OF P.C. 4178
 SANITARY SEWERS PAGE 1
 TO BE CONSTRUCTED IN
 TRACT No 23318 (24,501)

B.M. J-2, F.B. 765-57, E.I. 2982.438
 Top of Brass cap man in front well @
 Intersection of Ave J & Division

- NOTE:
 PROFILE STAKES ON THE PROPERTY LINE OR PROPERTY LINE PRODUCE AT RIGHT ANGLES TO THE SEWER LINE AT THE CENTER LINE OF EACH MANHOLE.
- NO REPRESENTATIVE OF THE COUNTY ENGINEER WILL SURVEY OR LAYOUT ANY PORTION OF THE WORK.
- THE OWNER OR HIS AUTHORIZED REPRESENTATIVE SHALL FURNISH THE COUNTY ENGINEER WITH GRASS SHEETS AND STATION FOR ALL HOUSE LATERALS AND Y BRANCHES AND SHALL PROVIDE STAKES FOR THEM AT THEIR PROPER LOCATIONS WITH STATIONING PLAINLY MARKED. ANY CHANGE IN LOCATION SHALL BE INDICATED BY WRITING BY THE OWNER OR HIS REPRESENTATIVE.
- NO REVISIONS SHALL BE MADE IN THESE PLANS WITHOUT THE APPROVAL OF THE COUNTY ENGINEER.
- USE STANDARD MANHOLE FRAMES AND COVERS, S.A.-117, EXCEPT AS NOTED.
 - USE STANDARD STRENGTH PIPE EXCEPT AS NOTED.
 - USE CEMENT MORTAR FOR ALL VITRIFIED CLAY PIPE JOINTS.
 - INSURE ALL TRENCHES WITHIN PAVED AREA TO MEET L. A. COUNTY ROAD DEPT., OR CALIF. STATE HIGHWAY DEPT. REQUIREMENTS IN ACCORDANCE WITH PERMITS.
 - INDICATE FOUR FEET OF SEWER AT POINTS OF INTERFERENCE WITH POLES, S.A.-118.
 - HOUSE LATERALS TO BE CONSTRUCTED WITH INVERTS AT PROPERTY LINE, 2 FEET BELOW CURB GRADE EXCEPT AS NOTED.
 - ALL STRUCTURES SHALL BE BRICK SEWER STRUCTURES, S.A.-184, EXCEPT AS NOTED.
 - FOR ALLOWABLE SEWAGE TEST USE FORMULA NO. 1 SPEC'S, SEC. 54
 - MANHOLE TOPS IN UNIMPROVED AREAS TO BE 4" ABOVE FINISHED GRADE.
 - CALL ALL PIPE JOINTS THAT ARE WITHIN 50 FEET OF ANY PROPERTY LINE WITH 4" OF CEMENT MORTAR.
 - THE PRIVATE ENGINEER IS TO FURNISH THE DETAIL OF ALL HOUSE LATERALS AT THE PROPERTY LINE, BELOW THE TOP OF CURB ELEVATION ON THE GRADE SHEET.

PRIVATE CONTRACT NO. 4178

W.S. 70
 9 SHEETS, 6 PAGES
 SCALE: VERT. 1" = 4'
 HORIZ. 1" = 40'
 SEPT. 1956
 PREPARED IN THE OFFICES OF
 ACTION ENGINEERING CO.
 G. R. Bonner
 REG. C. E. NO. 2247
 FOR LEGEND SEE PLAN NO. S.A.-64



INDEX MAP
 TRACT No 23318 P.C. 4178
 SCALE: 1" = 400'

NO CHARGE FOR
 CONNECTIONS
 12-4-56

Before breaking into any existing structure
 and before final acceptance of this work,
 County Sanitation District should be notified
 in order that required inspection may be made.

NOTE:
 GRADES TO WHICH THIS IMPROVEMENT IS TO BE CONSTRUCTED ARE SHOWN ON PLANS AND PROFILE GRADE POINTS FOR TOP OF CURB, CENTER LINE OF STREET, OR CENTER LINE OF ALLEY ARE SHOWN ON PROFILES AT ALL POINTS BETWEEN MANHOLES. POINTS THE GRADE SHALL BE ESTABLISHED AS TO CONFORM TO A STRAIGHT LINE BETWEEN SAID ESTABLISHED POINTS.

REVISIONS ARE IN FULL ABOVE EACH OF THE DETAILED SECTIONS OF THIS DRAWING AND THE DATA HEREON ARE HEREBY MADE A PART OF THE SPECIFICATIONS.

WORK SHALL BE CONSTRUCTED ACCORDING TO SPECIFICATIONS ON FILE IN THE OFFICE OF THE COUNTY ENGINEER AND SHALL BE INSPECTED ONLY IN THE PRESENCE OF THE COUNTY ENGINEER.

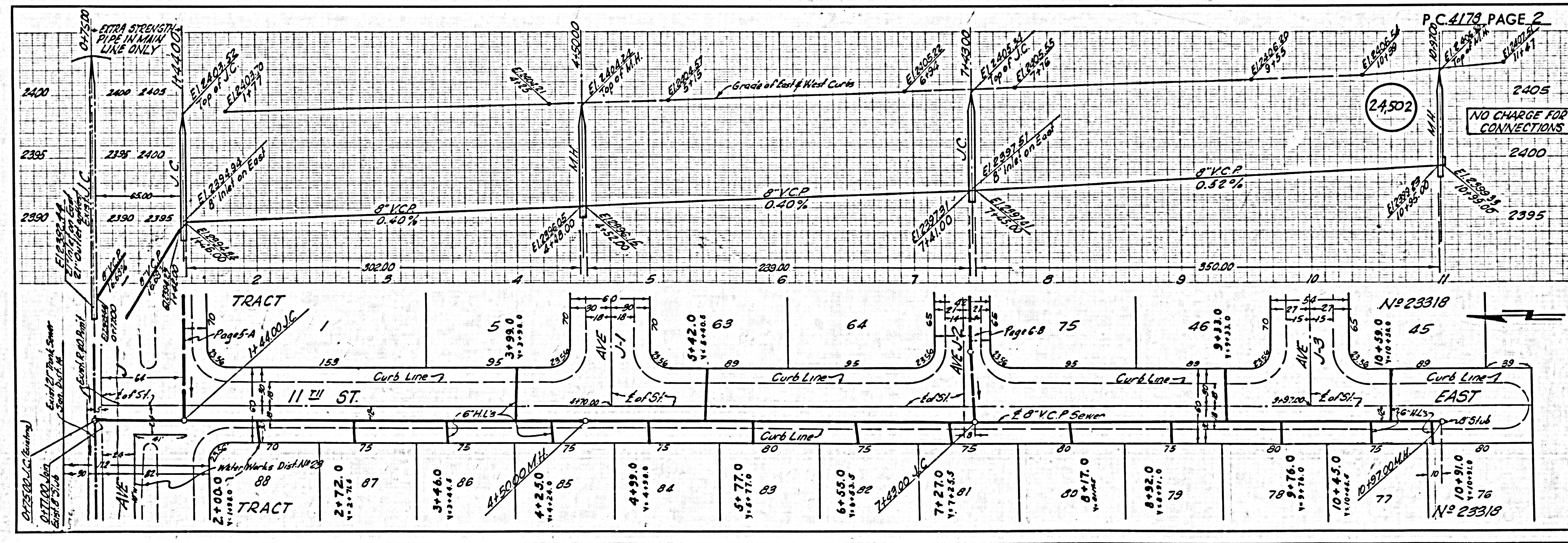
BEFORE WORK CAN BE STARTED, THE CONTRACTOR MUST OBTAIN A PERMIT TO EXCAVATE IN COUNTY SHEETS FROM THE L. A. COUNTY ROAD DEPT., THE W. STATE ST. AND ROAD & BRIDGE WITH THE COUNTY ENGINEER, ROOM 204 IN AMERICAN BLDG., 228 SO. BROADWAY APPLICANT TO COVER THE COST OF CONSTRUCTION INSPECTION AND RECORD PLANS.

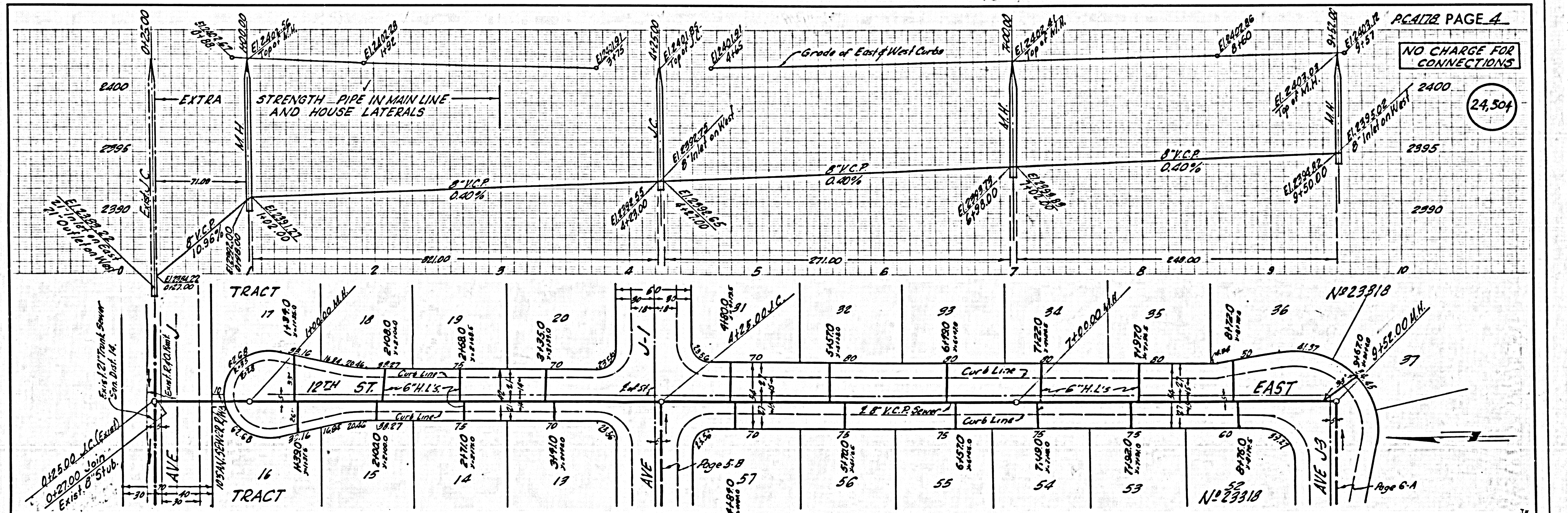
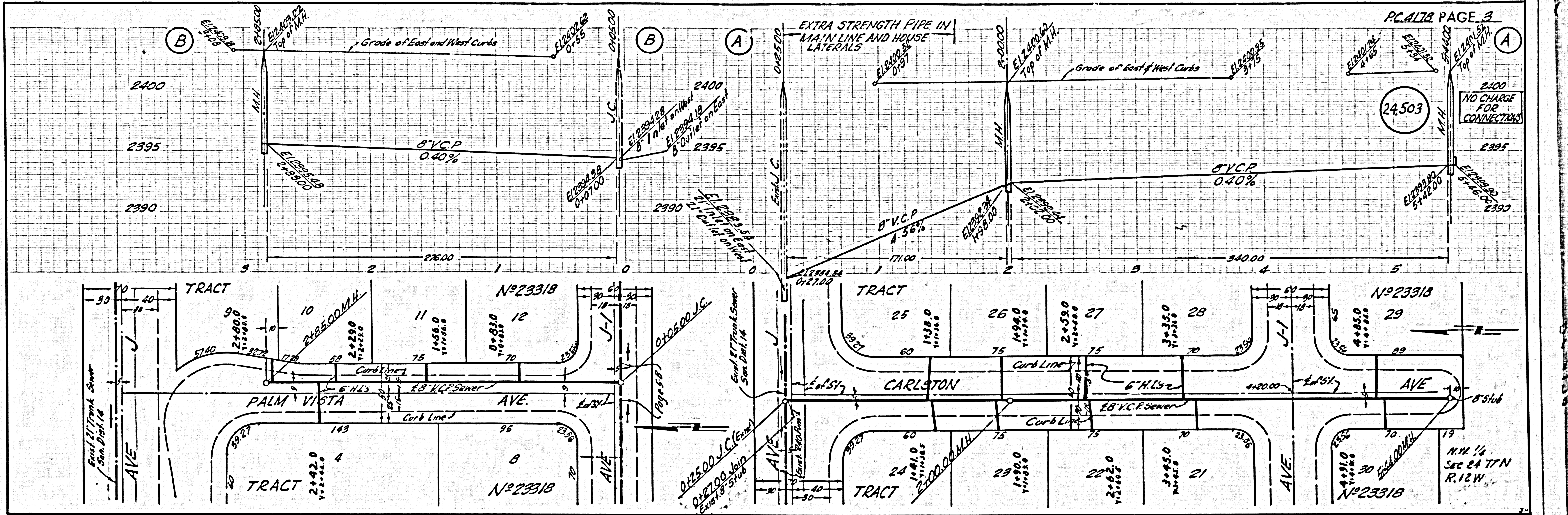
APPROVAL OF THIS PLAN BY THE COUNTY OF LOS ANGELES DOES NOT CONSTITUTE A REPRESENTATION AS TO THE ACCURACY OF THE LOCATION OF OR THE EXISTENCE OR NON-EXISTENCE OF ANY UNDERGROUND UTILITY PIPES OR STRUCTURE WITHIN THE LIMITS OF THE PROJECT. THE OWNER AGREES TO ALL RISKS.

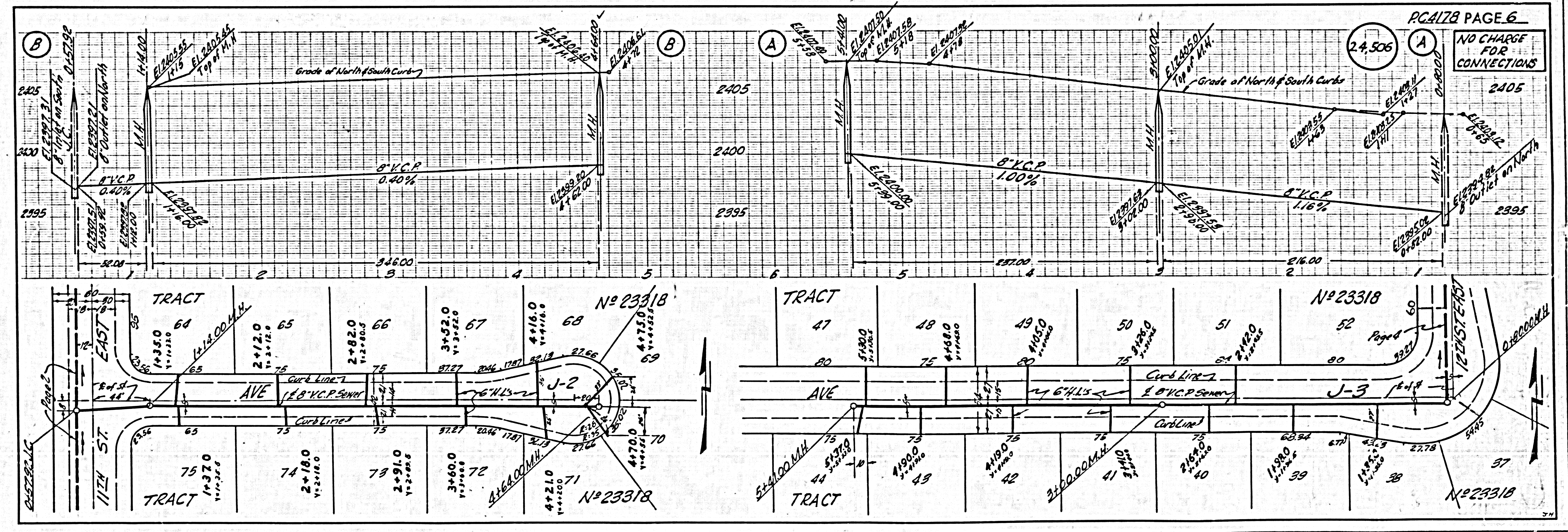
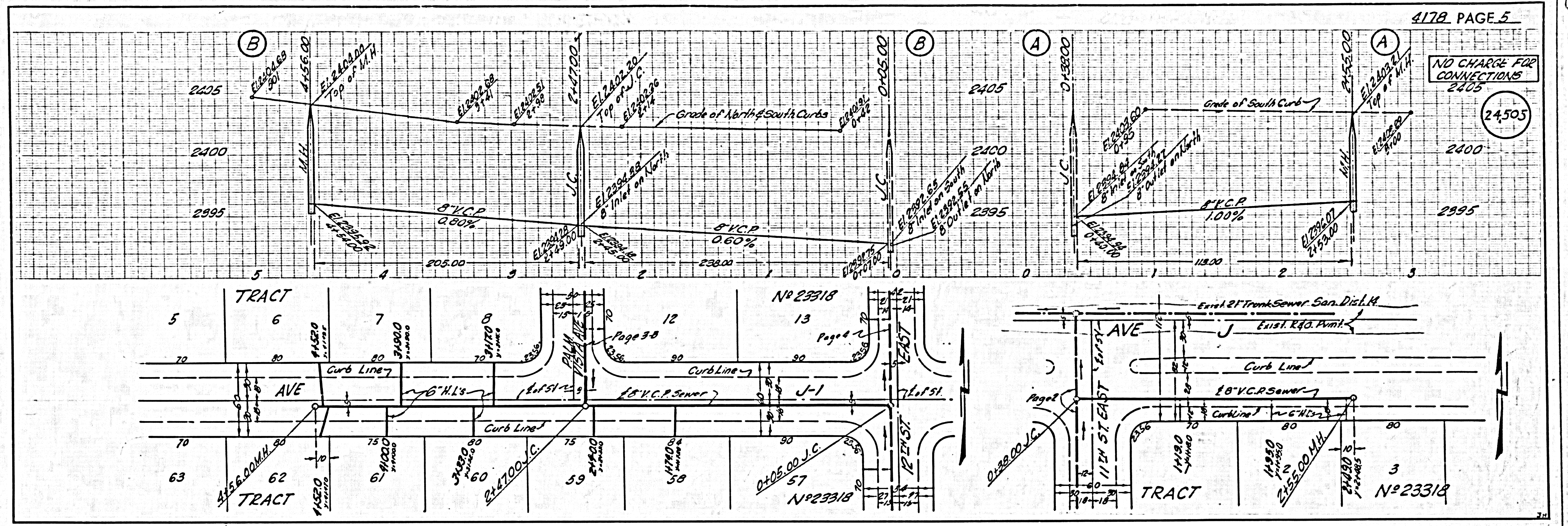
IF WORK IS TO BE DONE IN A STATE HIGHWAY, A PERMIT MUST BE OBTAINED FROM THE STATE OF CALIFORNIA, DIVISION OF HIGHWAYS, 120 SOUTH SPRING STREET.

COUNTY OF LOS ANGELES, CALIFORNIA

APPROVED, JOHN A. LAMBE, COUNTY ENGINEER
 APPROVED, A. M. BAWBY, CHIEF ENGINEER
 BY: A. P. Collins, SANITATION ENGINEER
 BY: J. P. Williams, OFFICE ENGINEER
 CHECKED BY: G. R. Bonner, 10-2-56
 OFFICE OF COUNTY ENGINEER, REG. C. E. NO. 2406
 Revisions: Pages 2, 3A & 4 - Manholes & Elevations
 changed on Trunk Sewer.
 Approved: P. K. Kuhn, 12-4-56
 Office of County Engineer, Reg. C. E. 7460







11.4
 57.97
 56.55
 52.05
 4
 208.32