

BRANCH MADE - Los Angeles County Road Department SY-370. S.E. end side structure at E of Del Amo Blvd of former Santa Fe Ave. Adj. 1951 Elev 38.425

Before breaking into any existing structure and before final acceptance of this work County Sanitation District should be notified in order that required inspection may be made.

INDEX TABLE	
SHEETS	PAGES
2	3

NO CHARGE FOR CONNECTIONS
S.K. Dinda 11-12-56

LENNOX BLDG. DIST. NO. 7

- NOTE: PROVIDE STAKES ON THE PROPERTY LINES PRODUCED AT JOINT ANGLES TO THE SEWER LINE AT THE CENTER LINE OF EACH MANHOLE.
- NO REPRESENTATIVE OF THE COUNTY ENGINEER SHALL SURVEY OR LAYOUT ANY PORTION OF THE WORK.
- THE OWNER OR HIS AUTHORIZED REPRESENTATIVE SHALL FURNISH THE COUNTY ENGINEER WITH GRASS SHEETS AND STATION FOR ALL HOUSE LATERALS AND Y BRANCHES AND SHALL PROVIDE STAKES FOR THESE AT THEIR PROPER LOCATIONS WITH STATIONING PLAINLY MARKED. ANY CHANGE IN LOCATION SHALL BE INDICATED IN WRITING BY THE OWNER OR HIS REPRESENTATIVE. NO REVISIONS SHALL BE MADE IN THESE PLANS WITHOUT THE APPROVAL OF THE COUNTY ENGINEER.
- USE STANDARD MANHOLE FRAMES AND COVERS, S-A-117, EXCEPT AS NOTED.
 - USE STANDARD STRENGTH PIPE EXCEPT AS NOTED.
 - USE CEMENT MORTAR FOR ALL VITRIFIED CLAY PIPE JOINTS.
 - RESURFACE ALL TRENCH WITHIN PAVED AREA TO MEET L.A. COUNTY ROAD DEPT. OR CALIF. STATE HIGHWAY DEPT. REQUIREMENTS IN ACCORDANCE WITH PERMITS.
 - INDICATE FOUR FEET OF STOPS AT POINTS OF INTERFERENCE WITH PERMITS, S-A-119.
 - HOUSE LATERALS TO BE CONSTRUCTED WITHIN PERMITS AT PROPERTY LINE. SET BELOW CURB GRADE EXCEPT AS NOTED.
 - ALL STRUCTURES SHALL BE SINCE SEWER STRUCTURES, S-A-104, EXCEPT AS NOTED.
 - FOR ALLOWABLE LEAKAGE TEST USE FORMULA NO. 1, S.P.C.L. SEC. 84.
 - MANHOLE TOPS IN UNIMPROVED RIGHTS-OF-WAY TO BE 6" ABOVE FINISHED GRADE.

PROFILE ALIGNMENT AND GRADE OF **P.C. 4183**
SANITARY SEWERS PAGE 1
TO BE CONSTRUCTED IN

SUSANA ROAD
RANCHO SAN PEDRO INDUSTRIAL AREA
PRIVATE CONTRACT NO. 4183

W.S. 32
2 SHEETS, 3 PAGES
SCALE: 1" = 40' HORIZ. 1" = 4' VERT. NOV. 1956
PREPARED IN THE OFFICES OF

QUINTON ENGINEERS, LTD.
FOR LEGEND SEE PLAN NO. S-A-64

NOTE: GRADES TO WHICH THIS IMPROVEMENT IS TO BE CONSTRUCTED ARE SHOWN ON PLANS AND PROFILE GRADE POINTS FOR TOP OF CURBS, CENTER LINE OF STREETS, OR CENTER LINE OF ALLEYS ARE SHOWN BY CIRCLES ON PROFILES. AT ALL POINTS BETWEEN DESIGNATED POINTS THE GRADE SHALL BE ESTABLISHED SO AS TO CONFORM TO A STRAIGHT LINE DRAWN BETWEEN SAID DESIGNATED POINTS.

ELEVATIONS ARE IN FEET ABOVE U.S.C. AND G.S. SEA LEVEL, DATUM OF 1929.

THE ENGINEER AND THE SANITATION DISTRICT MAKE A PART OF THE SPECIFICATIONS WORK SHALL BE CONSTRUCTED ACCORDING TO SPECIFICATIONS ON FILE IN THE OFFICE OF THE COUNTY ENGINEER AND SHALL BE PROSECUTED ONLY IN THE PRESENCE OF THE COUNTY ENGINEER.

BEFORE WORK CAN BE STARTED, THE CONTRACTOR MUST OBTAIN A PERMIT TO EXCAVATE BY COUNTY STREETS FROM THE L.A. COUNTY ROAD DEPT. 100 W. 10TH ST. AND MAKE A DEPOSIT WITH THE COUNTY ENGINEER, ROOM 324 PAM AMERICAN BUILDING, 225 SO. BROADWAY SUFFICIENT TO COVER THE COST OF CONSTRUCTION INSPECTION AND INSURING PLANS.

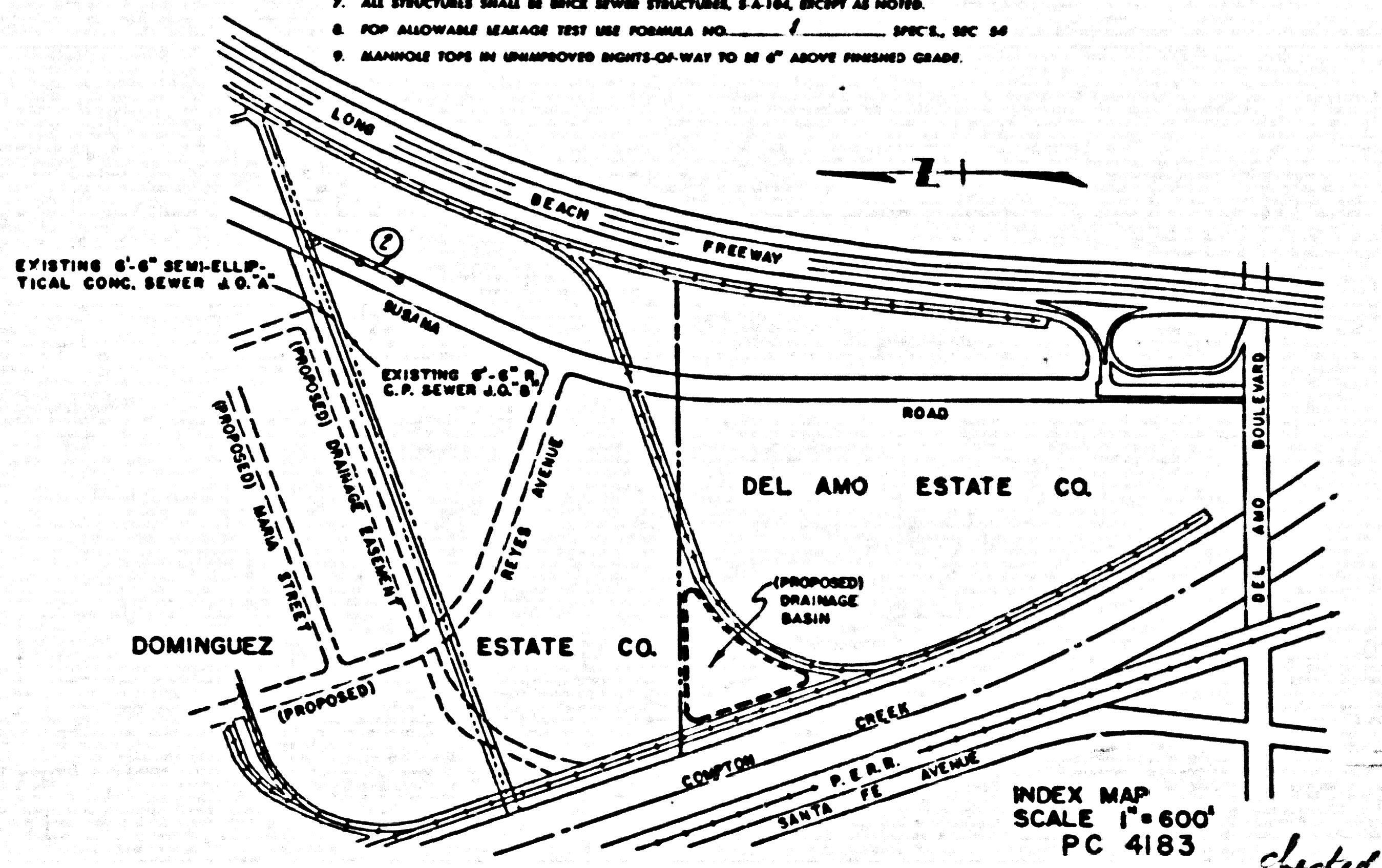
APPROVAL OF THIS PLAN BY THE COUNTY OF LOS ANGELES DOES NOT CONSTITUTE A REPRESENTATION AS TO THE ACCURACY OF THE LOCATION OF OR THE EXISTENCE OR NON-EXISTENCE OF ANY UNDERGROUND UTILITY PIPE, OR STRUCTURE WITHIN THE LIMITS OF THIS PROJECT. THIS NOTE APPLIES TO ALL PAGES.

IF WORK IS TO BE DONE ON A STATE HIGHWAY, A PERMIT MUST BE OBTAINED FROM THE STATE OF CALIFORNIA, DIVISION OF HIGHWAYS, 120 SOUTH SPRING STREET.

COUNTY OF LOS ANGELES, CALIFORNIA

APPROVED, JOHN A. LAMBE, COUNTY ENGINEER
APPROVED, A. M. RAWNA, CHIEF ENGINEER
BY *A.P. Collins* SANITATION ENGINEER
BY *J.L. Postman* COUNTY ENGINEER
CHECKED BY *S.K. Dinda 11-20-56*
OFFICE OF COUNTY ENGINEER, REG. C. E. NO. 3466

APPROVED, INDUSTRIAL WASTE DIVISION
BY *John L. Postman*
dated 12-11-56 *J.L. Postman*

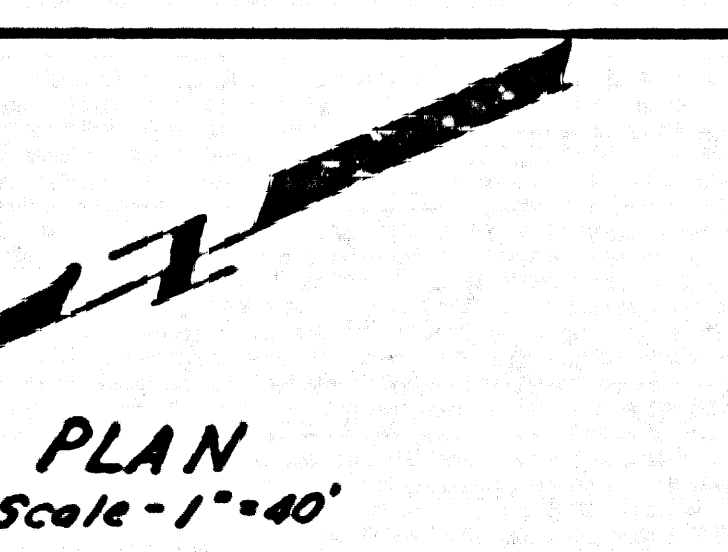
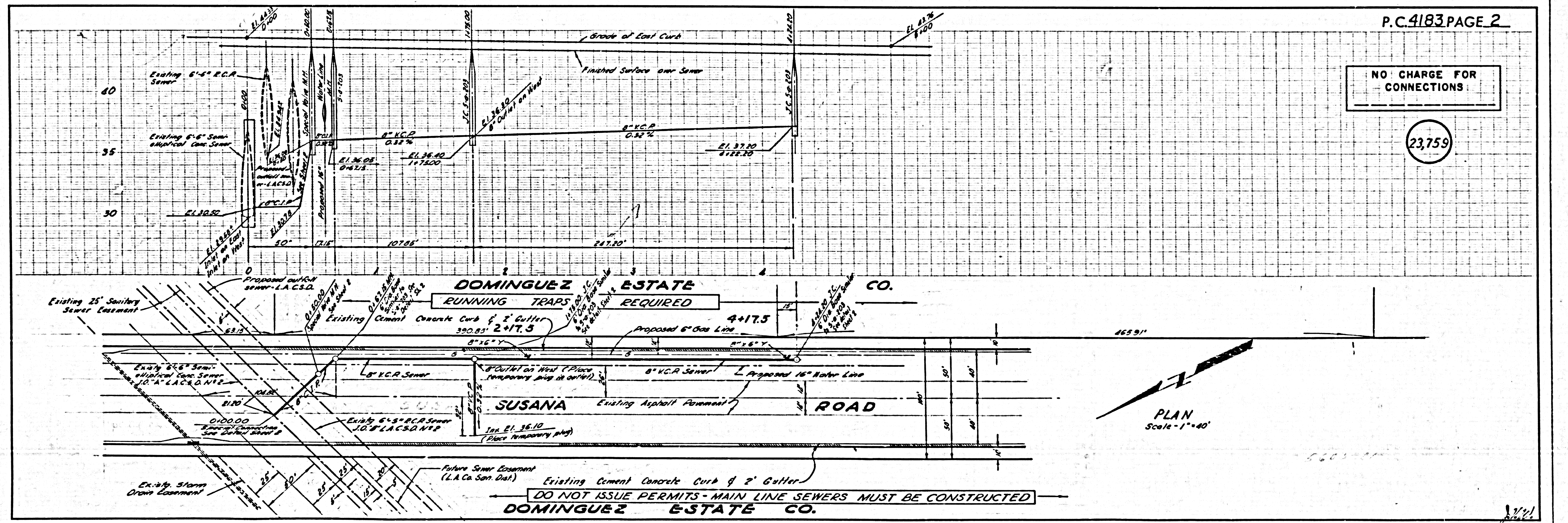


INDEX MAP
SCALE 1" = 600'
PC 4183

P.C. 4183 PAGE 2

NO CHARGE FOR CONNECTIONS

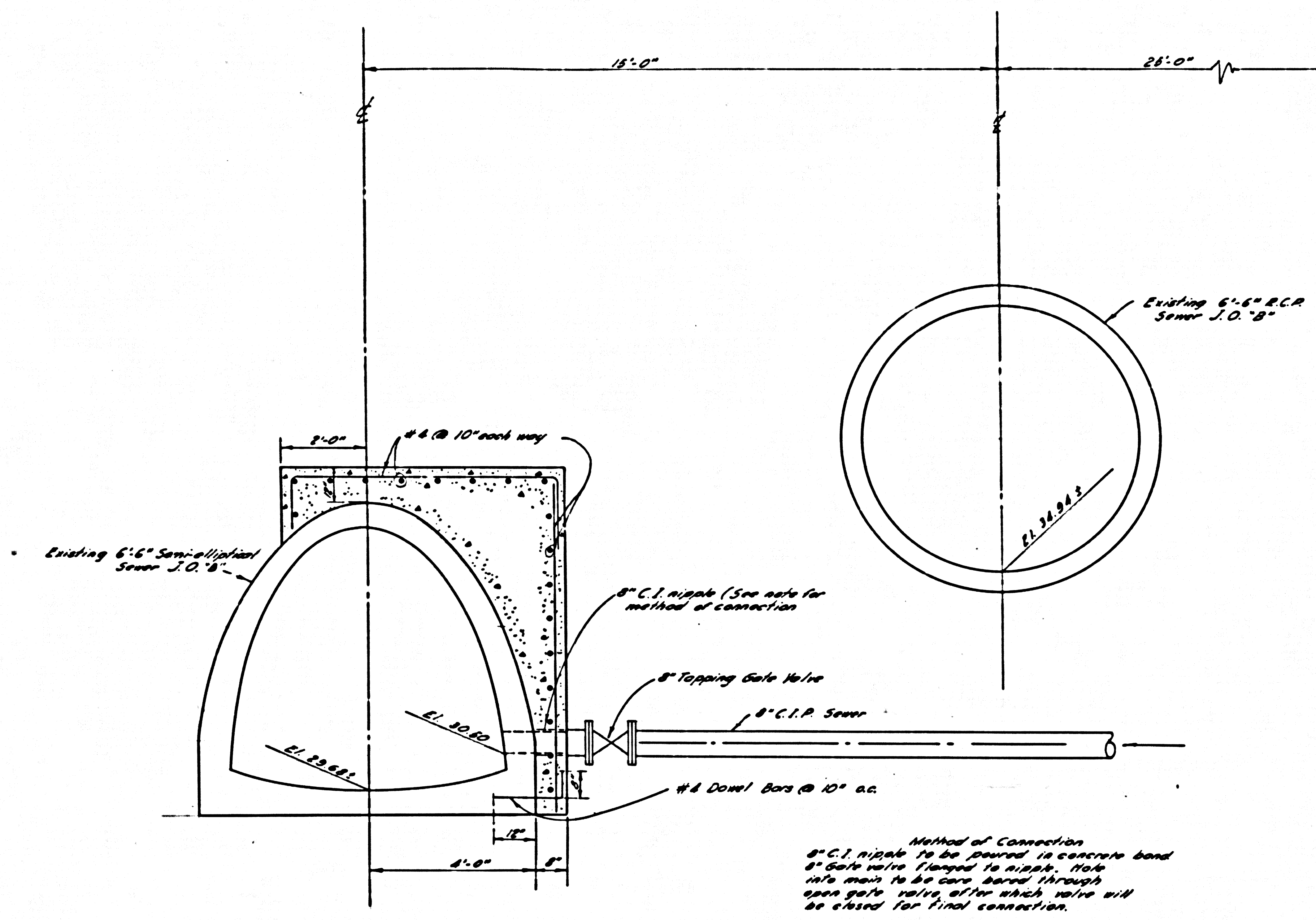
23,759



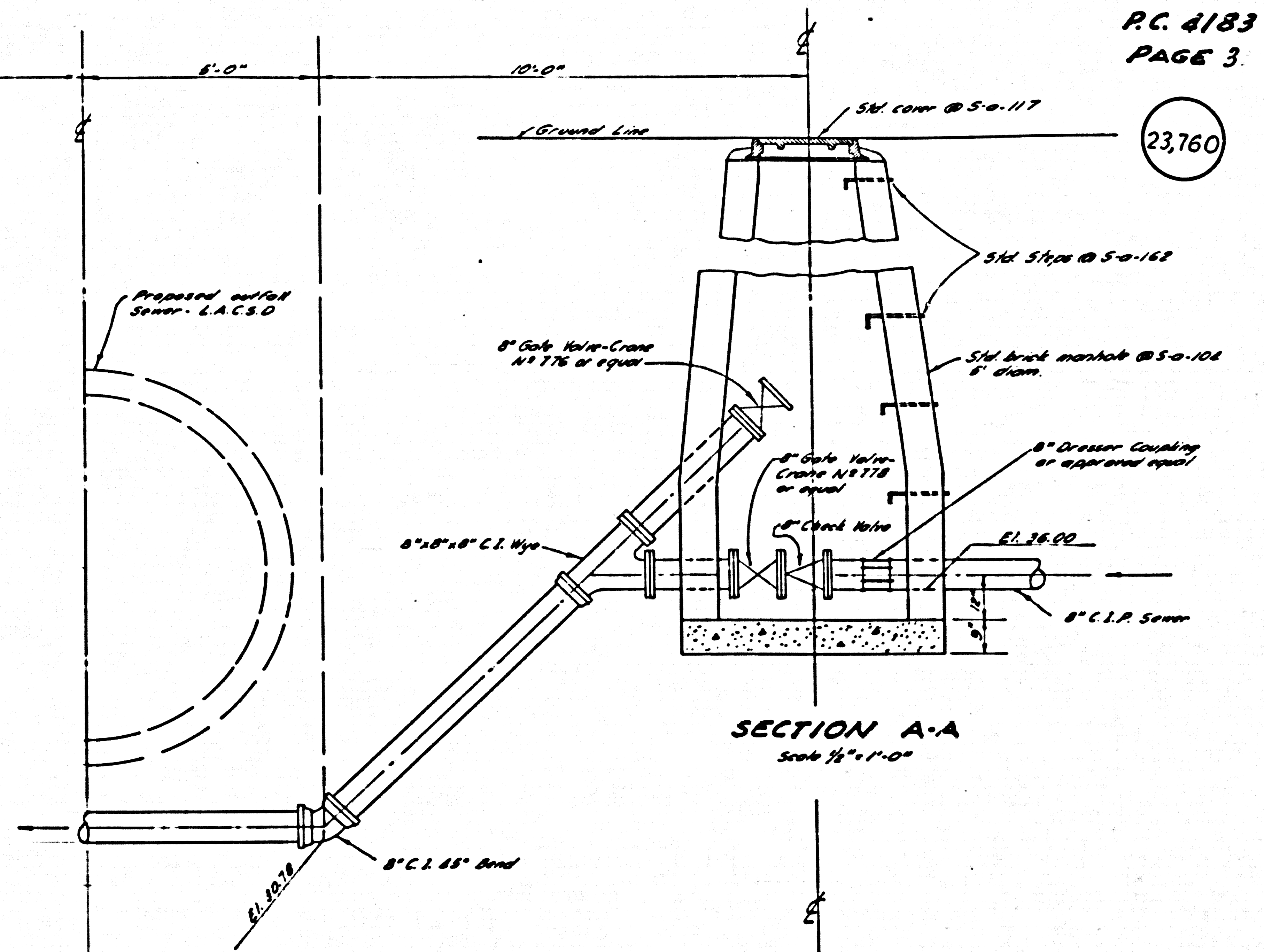
PLAN
Scale 1" = 40'

DO NOT ISSUE PERMITS - MAIN LINE SEWERS MUST BE CONSTRUCTED
DOMINGUEZ ESTATE CO.

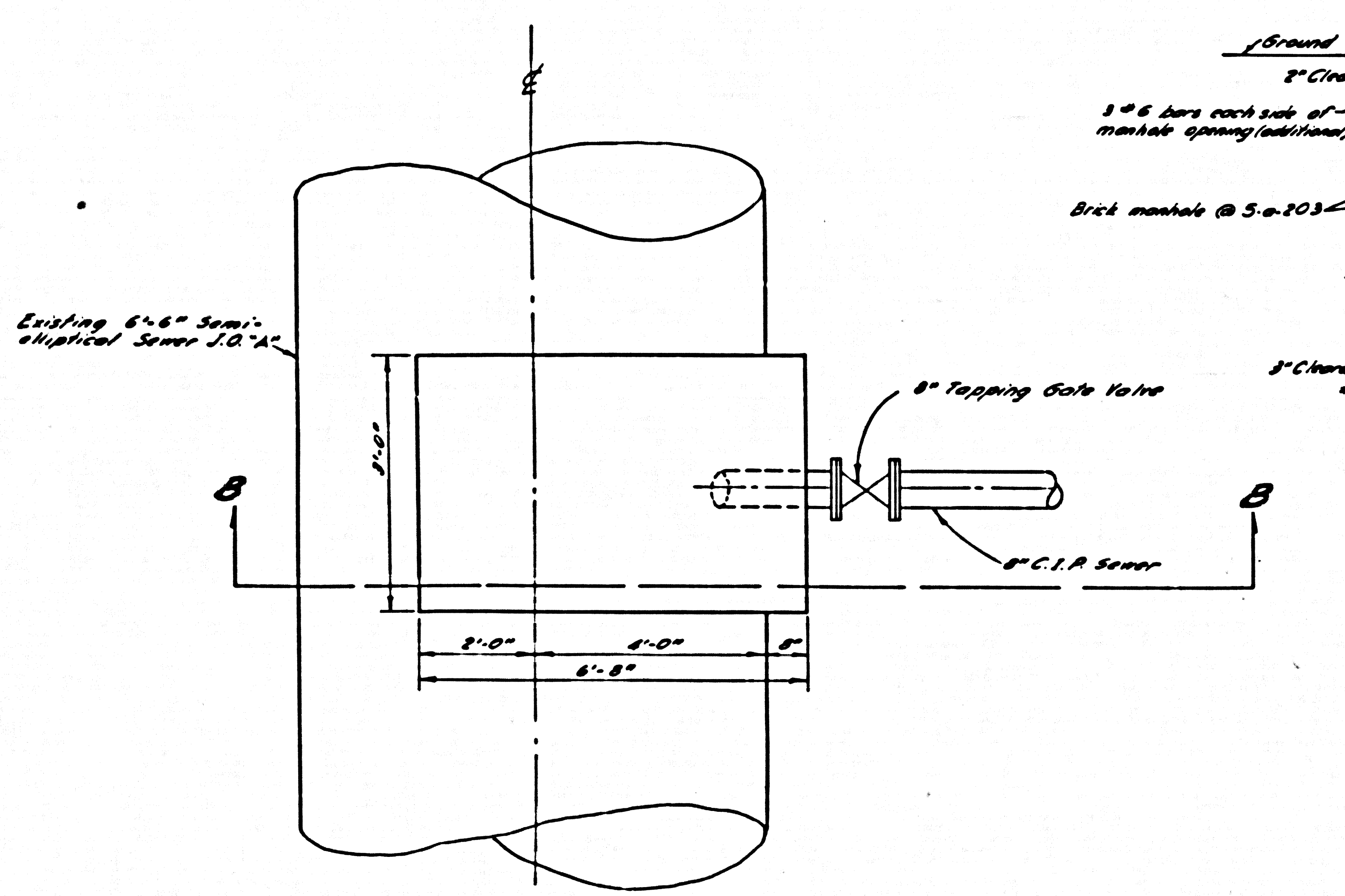
23,760



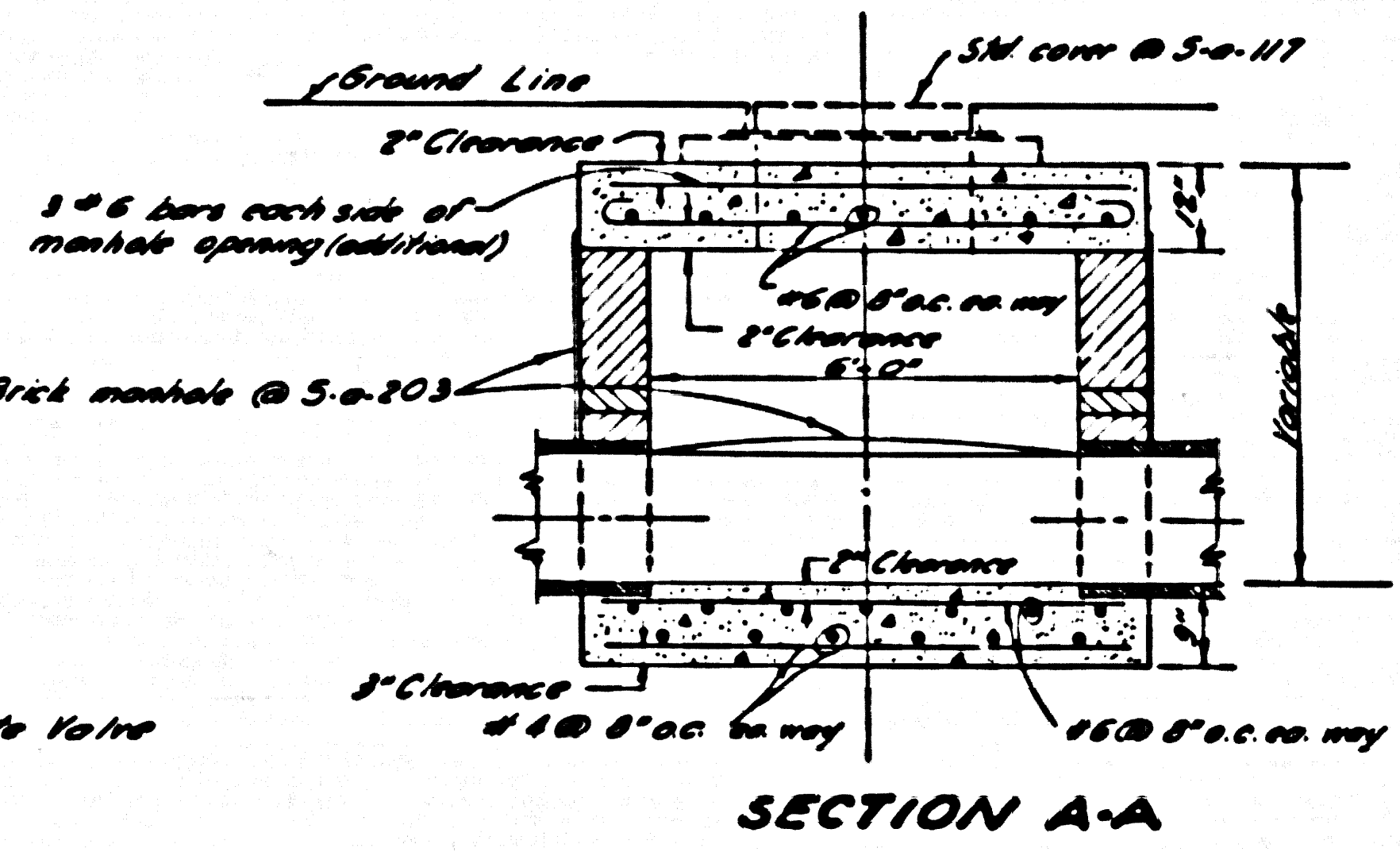
SECTION B-B
Scale 1/2" = 1'-0"



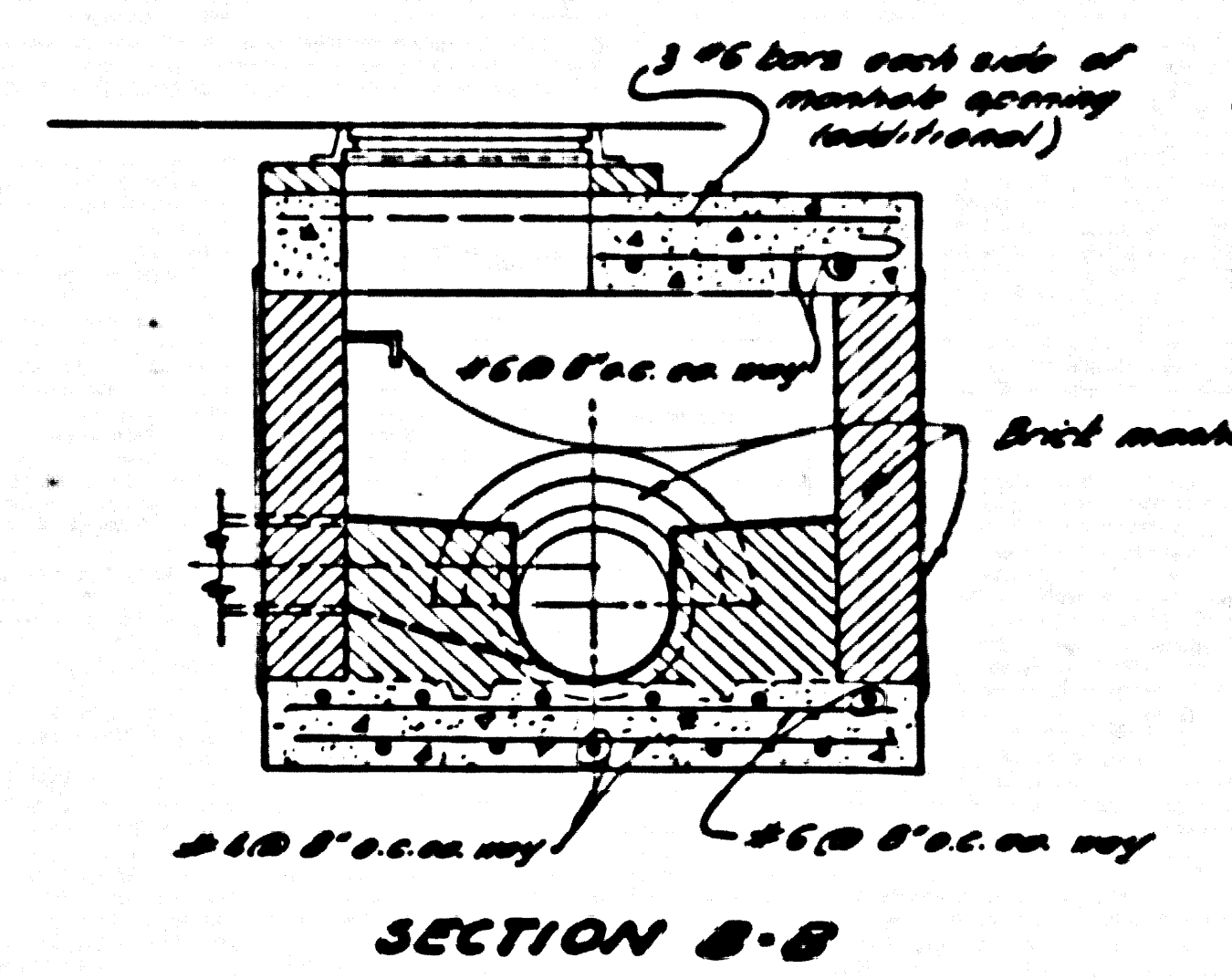
SECTION A-A
Scale 1/2" = 1'-0"



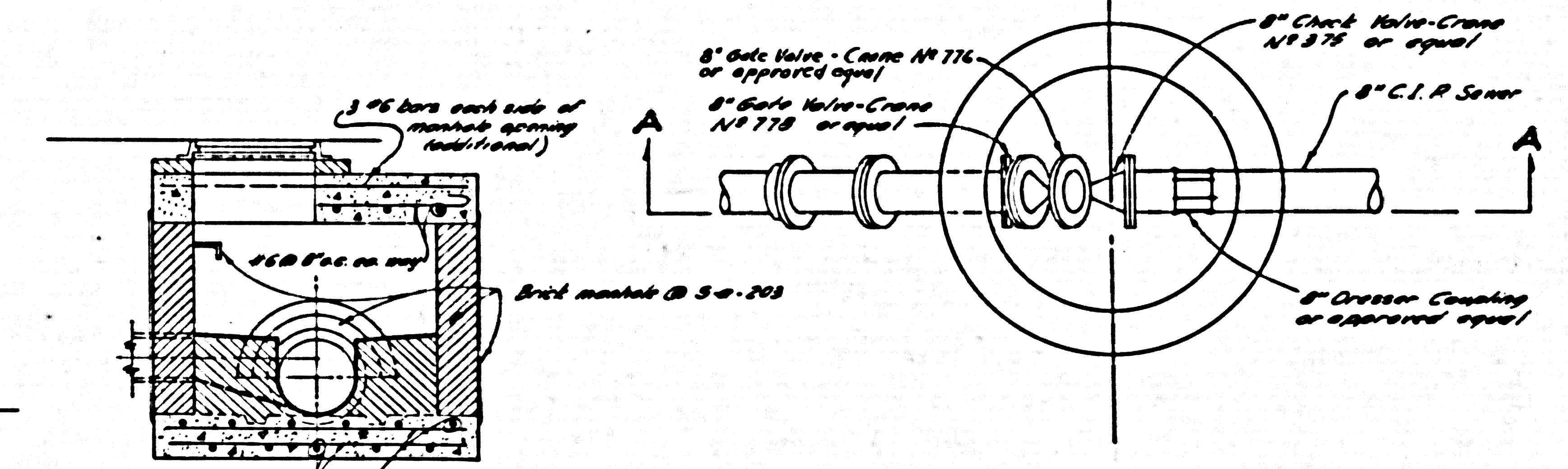
PLAN
CONNECTION TO 6'-6" SEMI-ELLIPTICAL CONC. SEWER
Scale 1/2" = 1'-0"



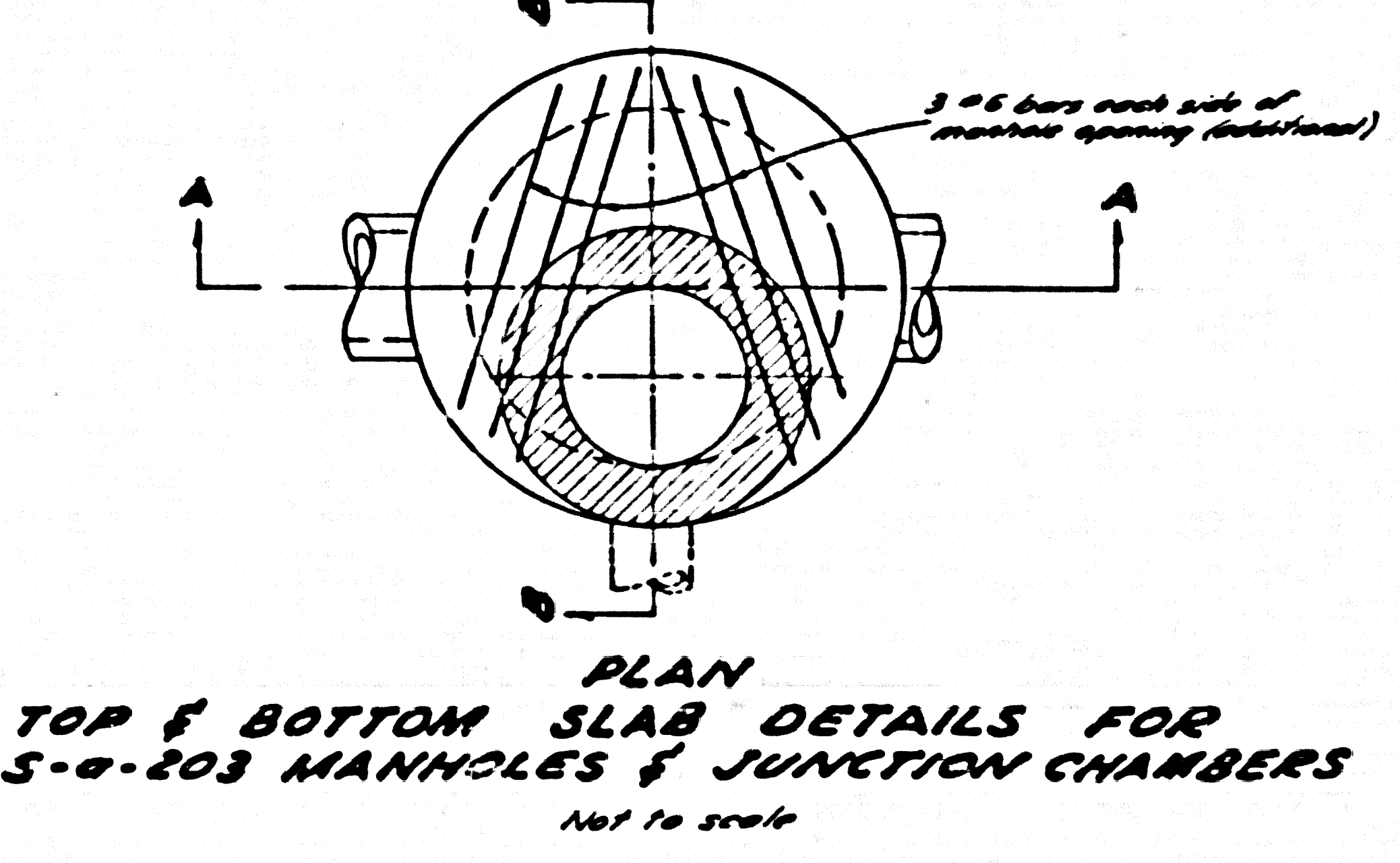
SECTION A-A



SECTION B-B



PLAN
SPECIAL VALVE MANHOLE - STA. 0+50.00
Scale 1/2" = 1'-0"



PLAN
TOP & BOTTOM SLAB DETAILS FOR
5'-0-203 MANHOLES & JUNCTION CHAMBERS
Not to scale

PRIVATE CONTRACT No 4183
CONSTRUCTION PLANS FOR
SANITARY SEWER
TO BE CONSTRUCTED IN
SUSANA ROAD
SHEET 2 OF 2 SHEETS
Scale 1/2" = 1'-0" NOV. 1956
COUNTY OF LOS ANGELES
JOHN A. LANSIE COUNTY ENGINEER
PREPARED IN THE OFFICES OF
QUINTON ENGINEERS, LTD.
APPROVED BY: [Signature] REG. C.E. No. 5319
Sanitation Engineer
APPROVED BY: J. A. M. RAYN CHIEF ENGINEER
BY: [Signature] Co. Sec. Dist. 270
Office Engineer
CHECKED BY: [Signature] 11-20-56
Office of County Engineer - Reg. C.E. No. 2496