

LOMITA BLDG. DIST. NO. 71

PROFILE ALIGNMENT AND GRADE OF **P.C. 4185**  
**SANITARY SEWERS** PAGE **1**  
 TO BE CONSTRUCTED IN

**TRACT NO 18615**

**PRIVATE CONTRACT NO. 4185**

W.S. 28

3 SHEETS; 6 PAGES  
 SCALE: 1" = 40' HORIZ. 1" = 4' VERT.  
 DATE: OCT. 1956

23,811

PREPARED IN THE OFFICE OF  
**BARCLAY ENGINEERING CO**  
 Edward L. Rawson  
 REG. C. E. NO. 9783

FOR LEGEND SEE PLAN NO. S-A-64

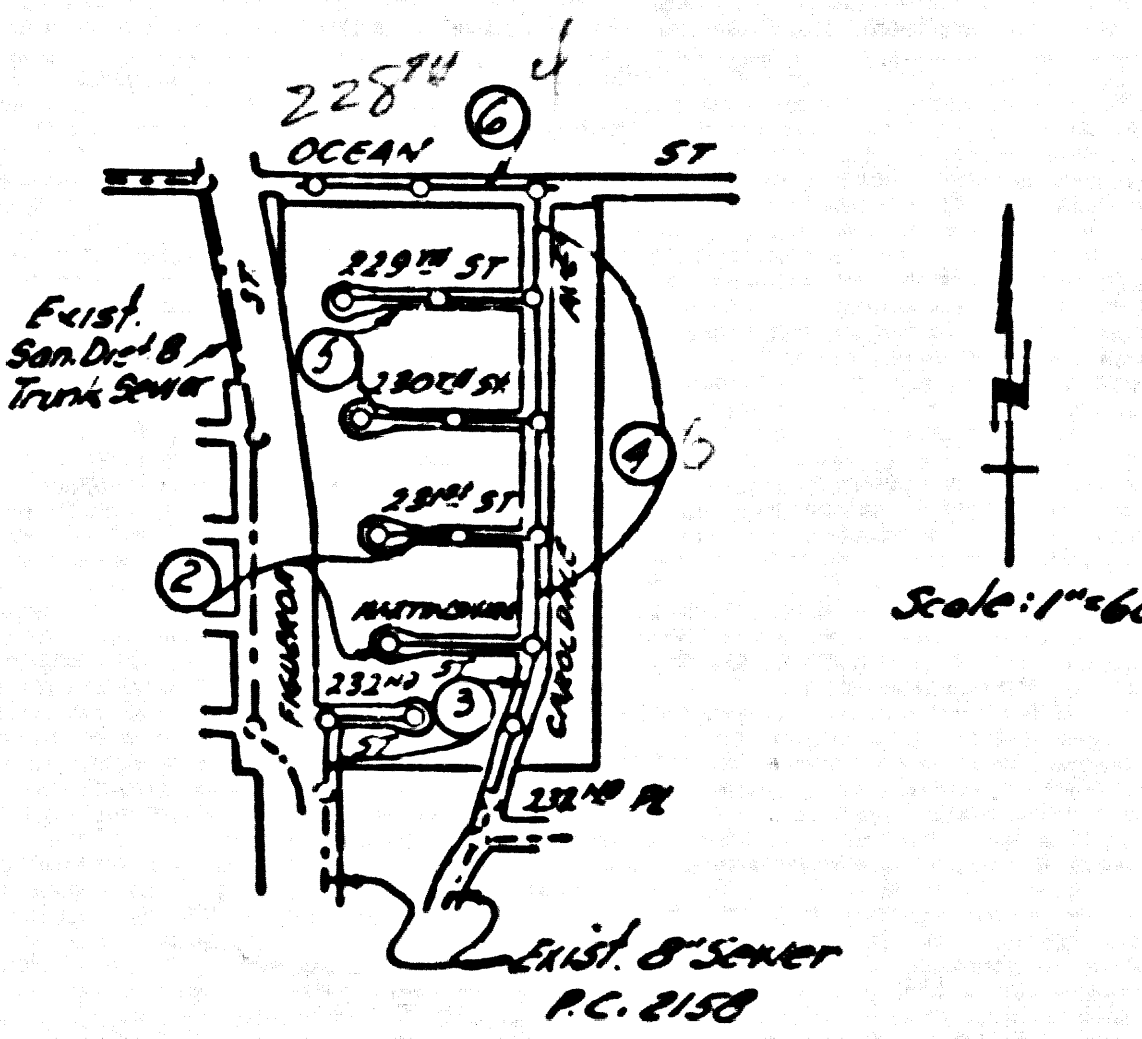
NOTE:  
 GRADES TO WHICH THE IMPROVEMENT IS TO BE CONSTRUCTED ARE SHOWN ON PLANS AND PROFILES. GRADE POINTS FOR TOP OF CURBS, CENTER LINE OF STREETS, OR CENTER LINE OF ALLEYS ARE SHOWN BY CHAR'S ON PROFILES AT ALL POINTS BETWEEN DESIGNATED POINTS. THE GRADE SHALL BE ESTABLISHED SO AS TO CONFORM TO A STRAIGHT LINE DRAWN BETWEEN SAID DESIGNATED POINTS.  
 ELEVATIONS ARE IN FEET ABOVE U.S.C. & G.S. MEAN LEVEL, DATUM OF 1929.  
 THIS DRAWING AND THE DATA HEREON ARE HEREBY MADE A PART OF THE SPECIFICATIONS.  
 WORK SHALL BE CONSTRUCTED ACCORDING TO SPECIFICATIONS ON FILE IN THE OFFICE OF THE COUNTY ENGINEER AND SHALL BE INSPECTED ONLY IN THE PRESENCE OF THE COUNTY ENGINEER.  
 BEFORE WORK CAN BE STARTED, THE CONTRACTOR MUST OBTAIN A PERMIT TO EXCAVATE IN COUNTY STREETS FROM THE L.A. COUNTY ROAD DEPT. AND IN THE CITY AND MAKE A REPORT WITH THE COUNTY ENGINEER, ROOM 224 PEARL ALLEY, BEAR-ING 320 BROADWAY SUPPLEMENT TO COVER THE COST OF CONSTRUCTION INSPECTION AND RECORD PLANS.  
 APPROVAL OF THIS PLAN BY THE COUNTY OF LOS ANGELES DOES NOT CONSTITUTE A REPRESENTATION AS TO THE ACCURACY OF THE LOCATION OF OR THE EXISTENCE OR NON-EXISTENCE OF ANY UNDERGROUND UTILITY PIPE, OR STRUCTURE WITHIN THE LIMITS OF THE PROJECT. THE NOTE APPLIES TO ALL PAGES.  
 IF WORK IS TO BE DONE ON A STATE HIGHWAY, A PERMIT MUST BE OBTAINED FROM THE STATE OF CALIFORNIA, DIVISION OF HIGHWAYS, 128 SOUTH SPRING STREET.

COUNTY OF LOS ANGELES, CALIFORNIA

APPROVED, JOHN A. LAMBE, COUNTY ENGINEER  
 APPROVED, A. M. RAWSON, CHIEF ENGINEER  
 BY **A. P. Collins** SANITATION ENGINEER  
 BY **A. Posthumus** OFFICE ENGINEER  
 CHECKED BY **R. Johnson** 10-26-56  
 OFFICE OF COUNTY ENGINEER, REG. C. E. NO. 7860

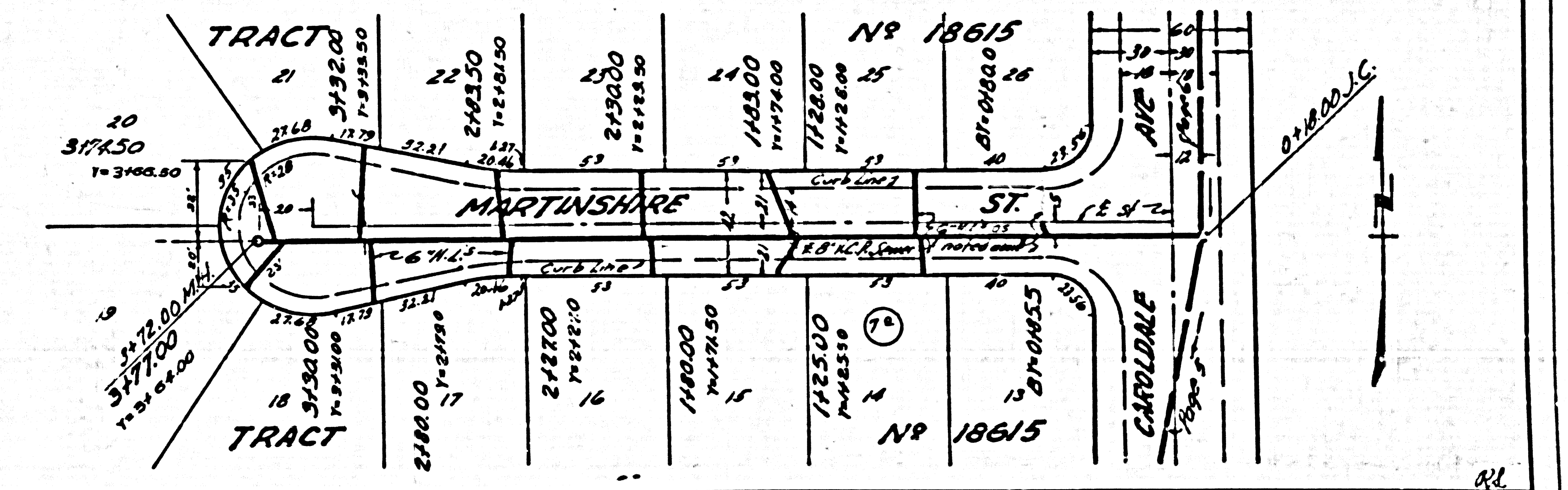
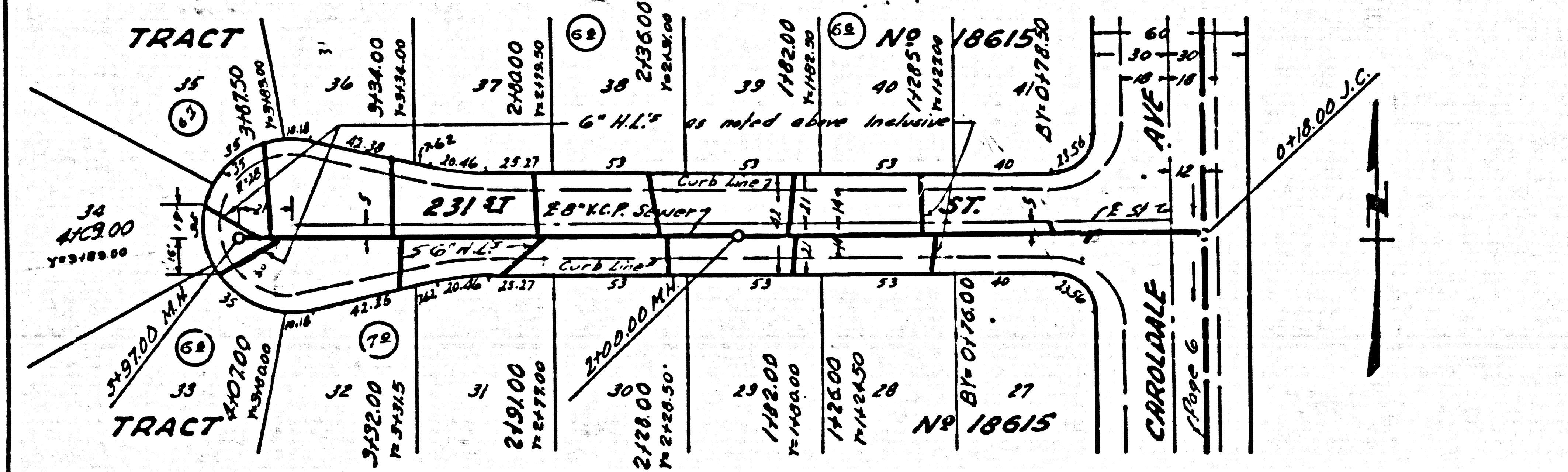
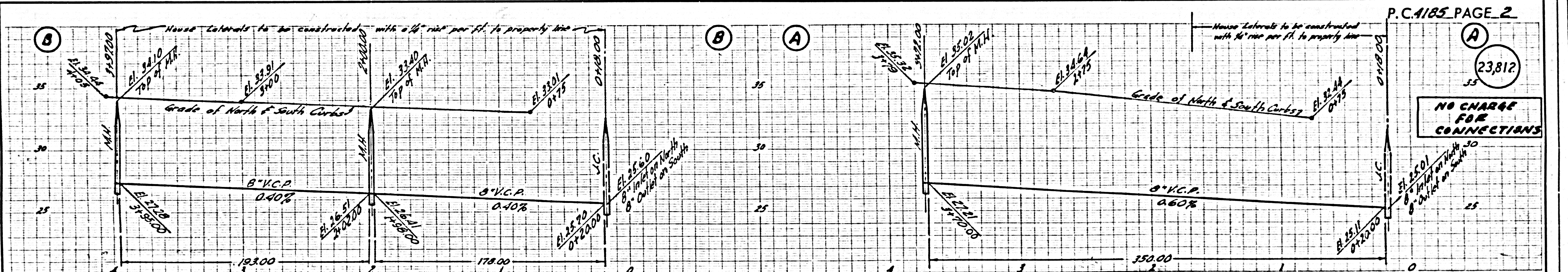
- NOTES:  
 PROVIDE STAKES ON THE PROPERTY LINE OR PROPERTY LINES PRODUCED AT RIGHT ANGLES TO THE SEWER LINE AT THE CENTER LINE OF EACH MANHOLE.  
 NO REPRESENTATIVE OF THE COUNTY ENGINEER WILL SURVEY OR LAYOUT ANY PORTION OF THE WORK.  
 THE OWNER OR HIS AUTHORIZED REPRESENTATIVE SHALL FURNISH THE COUNTY ENGINEER WITH GRADE SHEETS AND STATION FOR ALL HOUSE LATERALS AND BRANCHES AND SHALL PROVIDE STAKES FOR THEM AT THEIR PROPER LOCATIONS WITH STATIONING PLAINLY MARKED. ANY CHANGE IN LOCATION SHALL BE REQUESTED IN WRITING BY THE OWNER OR HIS REPRESENTATIVE.  
 NO REVISIONS SHALL BE MADE IN THESE PLANS WITHOUT THE APPROVAL OF THE COUNTY ENGINEER.  
 1. USE STANDARD MANHOLE FRAMES AND COVERS, S.A.-117, EXCEPT AS NOTED.  
 2. USE STANDARD STRAINING PIPE EXCEPT AS NOTED.  
 3. USE CEMENT MORTAR FOR ALL VITRIFIED CLAY PIPE JOINTS.  
 4. RESURFACE ALL TRENCH WITHIN PAVED AREA TO MEET L. A. COUNTY ROAD DEPT. OR CALIF. STATE HIGHWAY DEPT. REQUIREMENTS IN ACCORDANCE WITH PERMITS.  
 5. INDICATE POLLS SETS OF SEWERS AT POINTS OF INTERFERENCE WITH POLES, S.A.-119.  
 6. HOUSE LATERALS TO BE CONSTRUCTED WITH INVERTS AT PROPERTY LINE, 6" FEET BELOW CURB GRADE EXCEPT AS NOTED.  
 7. ALL STRUCTURES SHALL BE BRICK SPWER STRUCTURE, S.A.-104, EXCEPT AS NOTED.  
 8. FOR ALLOWABLE LEAKAGE TEST USE FORMULA NO. 1 SPEC. SEC. B.  
 9. MANHOLE TOPS IN UNIMPROVED RIGHTS-OF-WAY TO BE 6" ABOVE FINISHED GRADE.  
 10. The Private Engineer is to furnish the House Lateral depth at the property line below the top of curb elevation for each House Lateral, on the Grade Sheet.

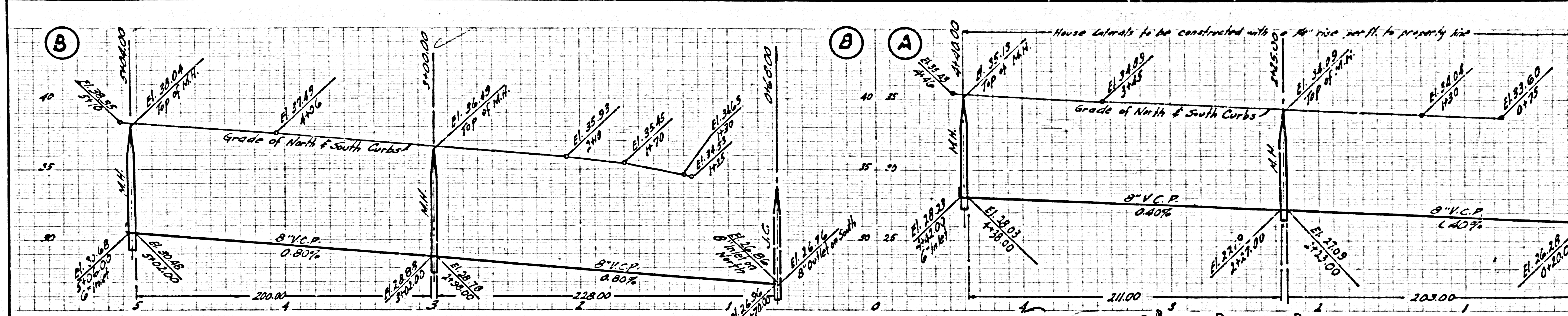
B.M. 57.3926, EL. 35.678 LET  
 172 CONC. PIP. 19" W.I.V.  
 of E. Inter. of Main & 227th St.



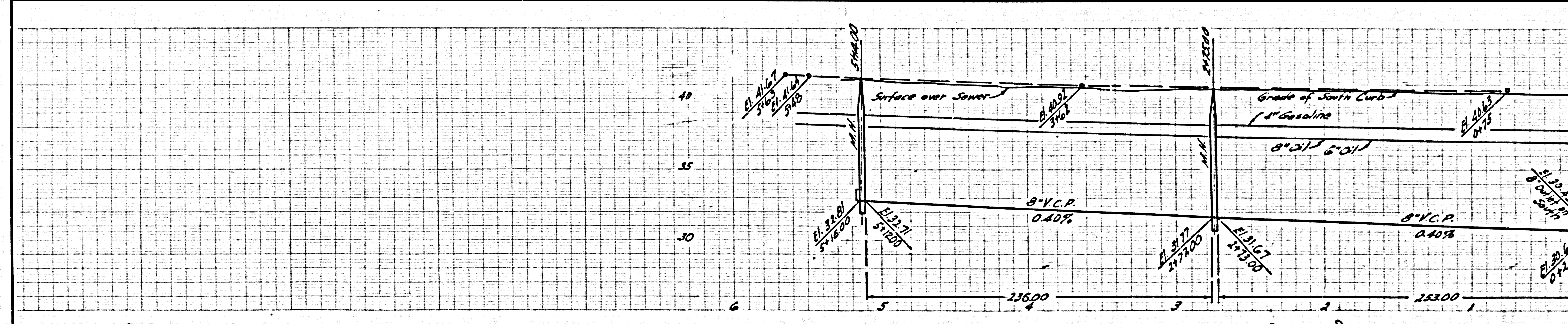
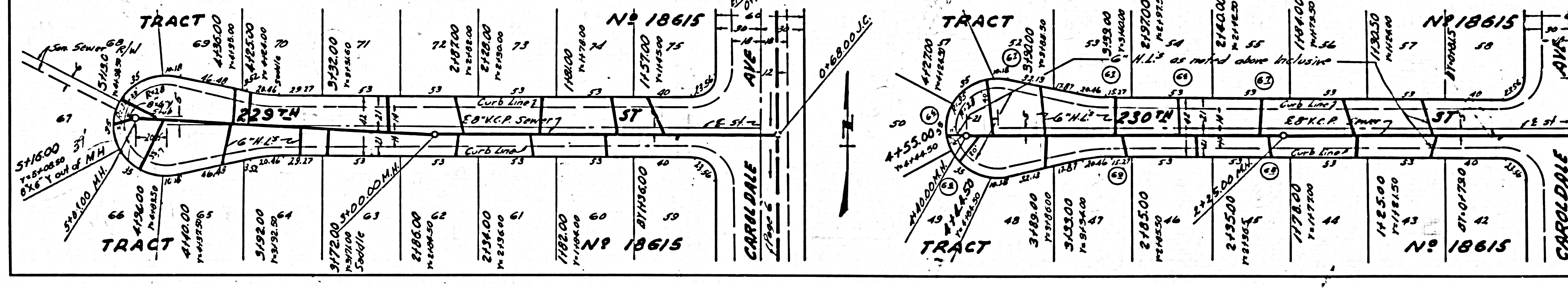
INDEX MAP  
 TRACT NO 18615  
 P.C. 4185

COLLECT CHARGES  
 AS INDICATED  
 10-26-56

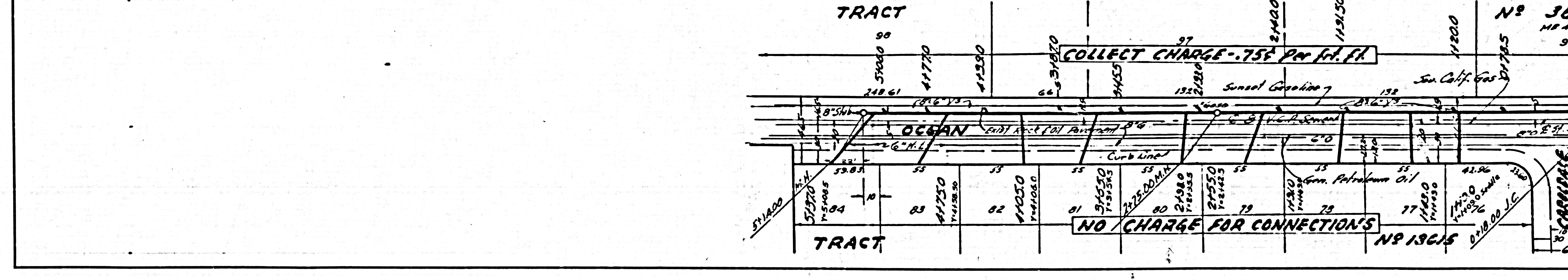




23,813  
35  
NO CHARGE FOR CONNECTIONS



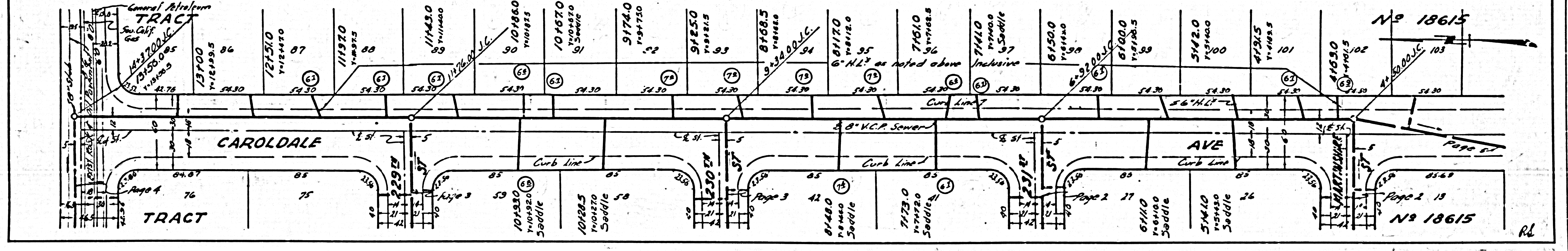
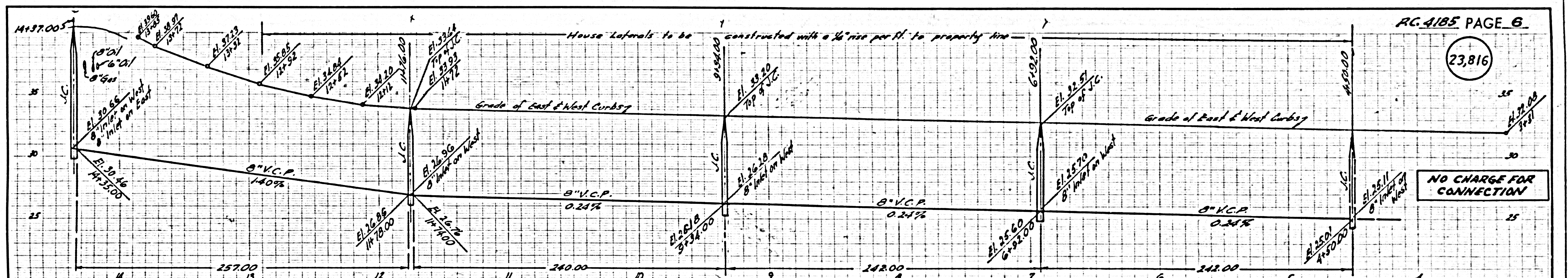
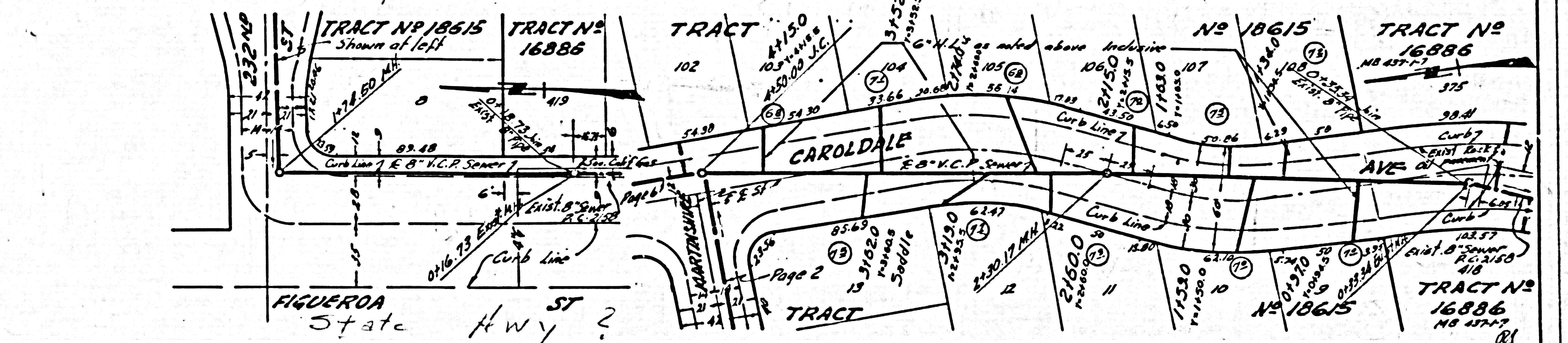
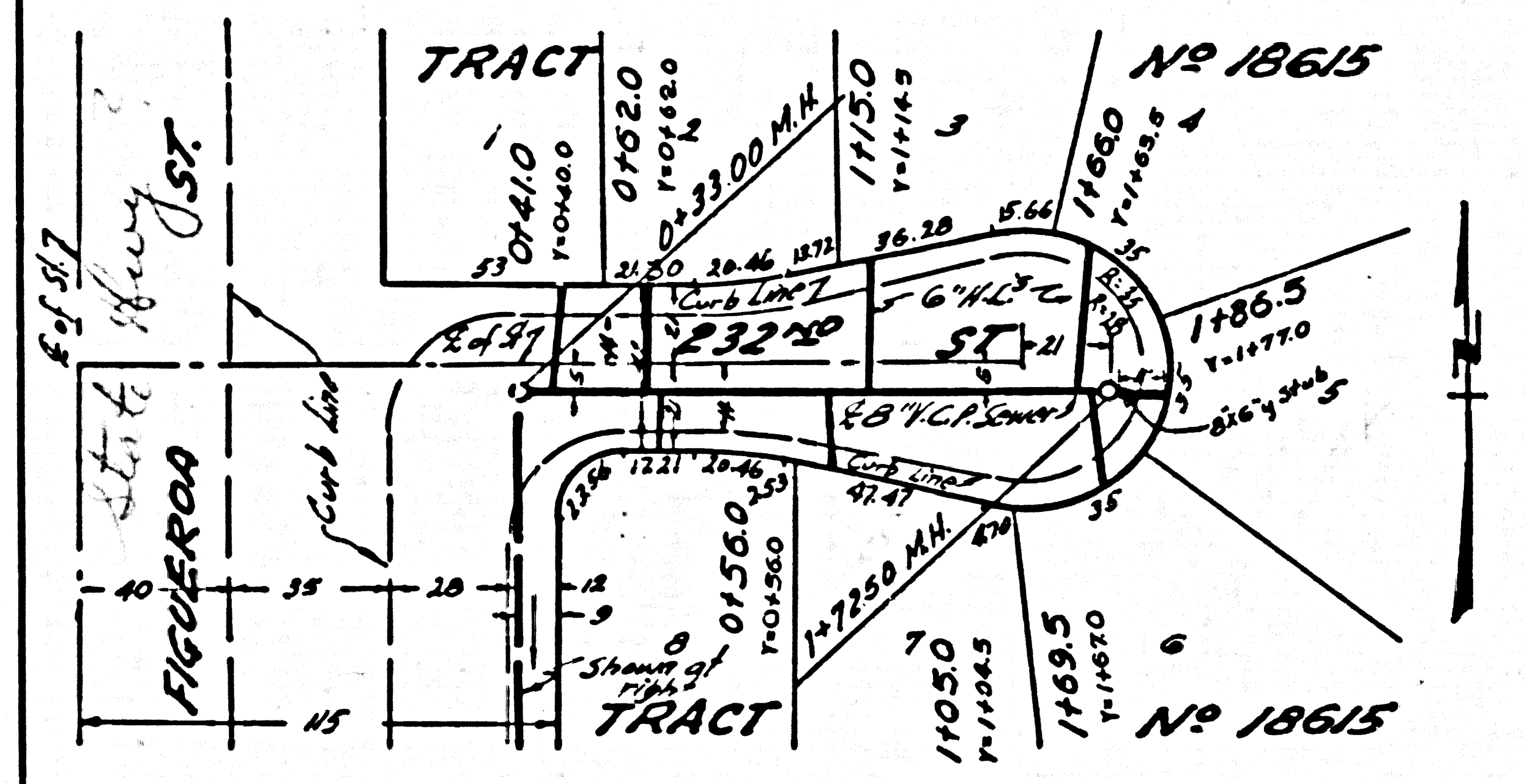
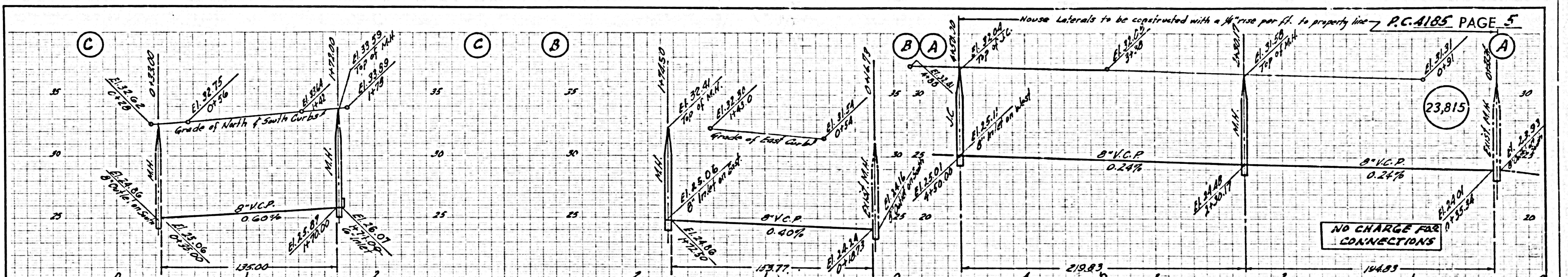
23,814  
35  
COLLECT CHARGES AS INDICATED



NO CHARGE FOR CONNECTIONS

P.C. 4102 TRACT No. 18615

P.C. 4105



P.C. 4182 TRACT NO 18612