

Trim line

PUENTE BUILDING DISTRICT NO 2

NOTE:

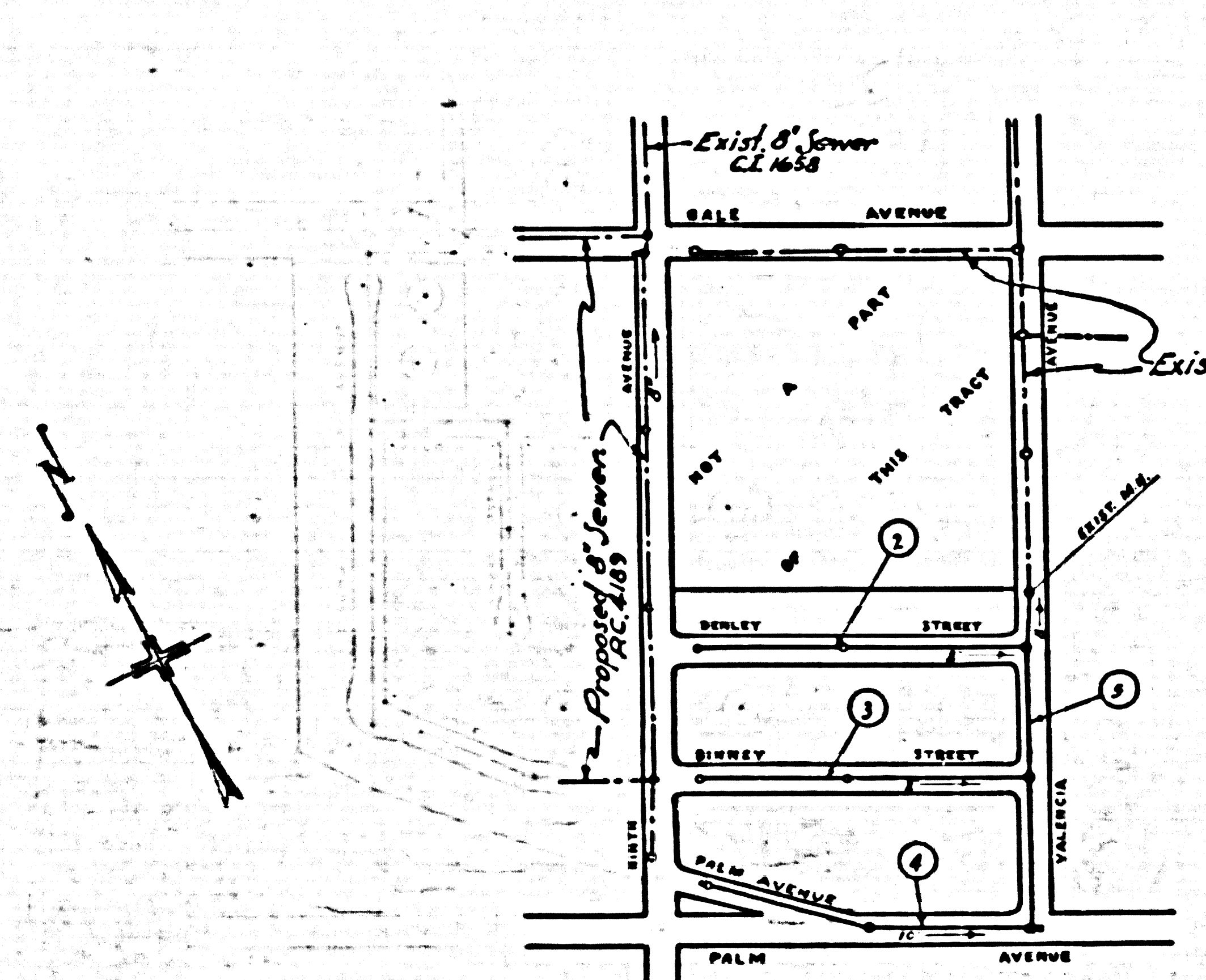
Provide stakes on the property lines or property lines produced at right angles to the sewer line at the center line of each manhole.

No representative of the County Engineer will survey or layout any portion of the work.

The owner or his authorized representative shall furnish the County Engineer with grade sheets and stations for all house laterals and Y branches and shall provide stakes for them at their proper locations with stationing plainly marked. Any change in location shall be requested in writing by the owner or his representative.

No revisions shall be made in these plans without the approval of the County Engineer.

1. Use standard manhole frames and covers, S-a-117.
2. Use standard strength pipe except as noted.
3. Use cement mortar for all vitrified clay pipe joints.
4. Resurface all trench within paved area to meet L.A. County Road Dept. or California State Highway Dept. requirements in accordance with permit.
5. Excise four feet of sewer at points of interference with poles, S-a-119.
6. House laterals to be constructed with inverts at property line $\frac{6}{12}$ feet below curb grade except as noted.
7. All structures shall be brick sewer structures, S-a-104.
8. For allowable leakage test, use Formula No. 1, Spec's, Sec. 54.
9. Manhole tops in unimproved Rights-Of-Way to be 6" above finish grade.
10. Private Engineer to furnish house lateral depth at property line below top of curb grade elevation for each house lateral on the grade sheet.



INDEX MAP
TRACT NO 23168
P.C. 4188
SCALE: 1"=200'

BENCH MARK 88-1342
L. & T. CORNER CONC. HEADWALL OF
CULVERT S.W. CORNER OF BIRTH
AVENUE & SALE AVENUE.
E.L. 332.99

Existing 8" Sewer
C.I. 1658

SHEET	PAGES
1	1-3

NO CHARGE
FOR CONNECTIONS
L. Curtis 7-17-57

Trim line

PROFILE, ALIGNMENT AND GRADE OF
SANITARY SEWERS
TO BE CONSTRUCTED IN
TRACT NO. 23168

P.C. 4188
PAGE 1

24608
-B-

PRIVATE CONTRACT NO. 4188
W. S. 37
5 SHEETS, 5 PAGES
AUGUST, 1956

PREPARED IN THE OFFICES OF
HAROLD M. TEGART

Harold M. Tegart
July 24, 1956 Reg. C. E. No. 2181

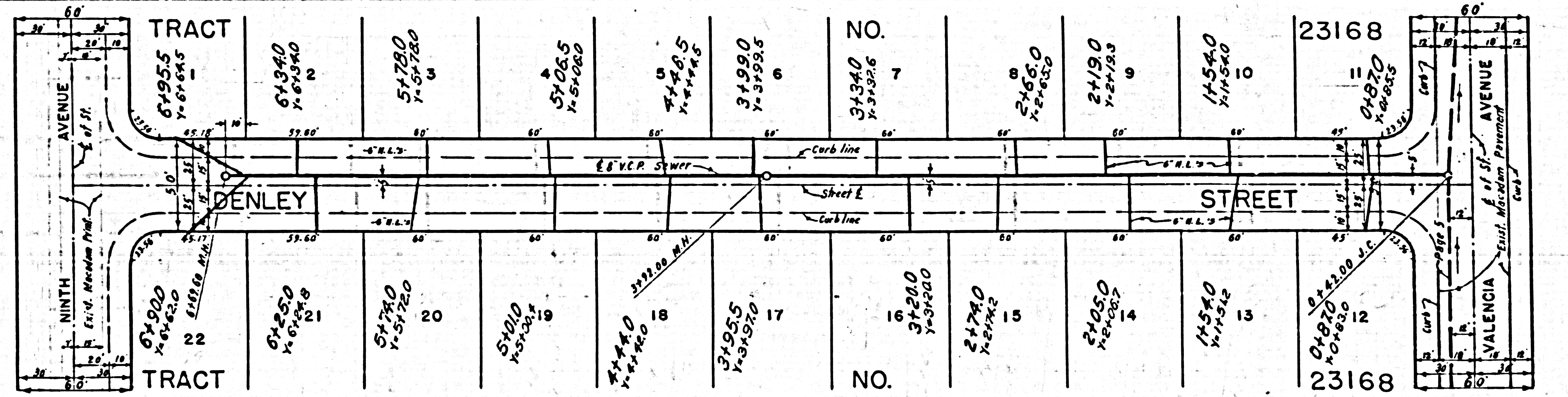
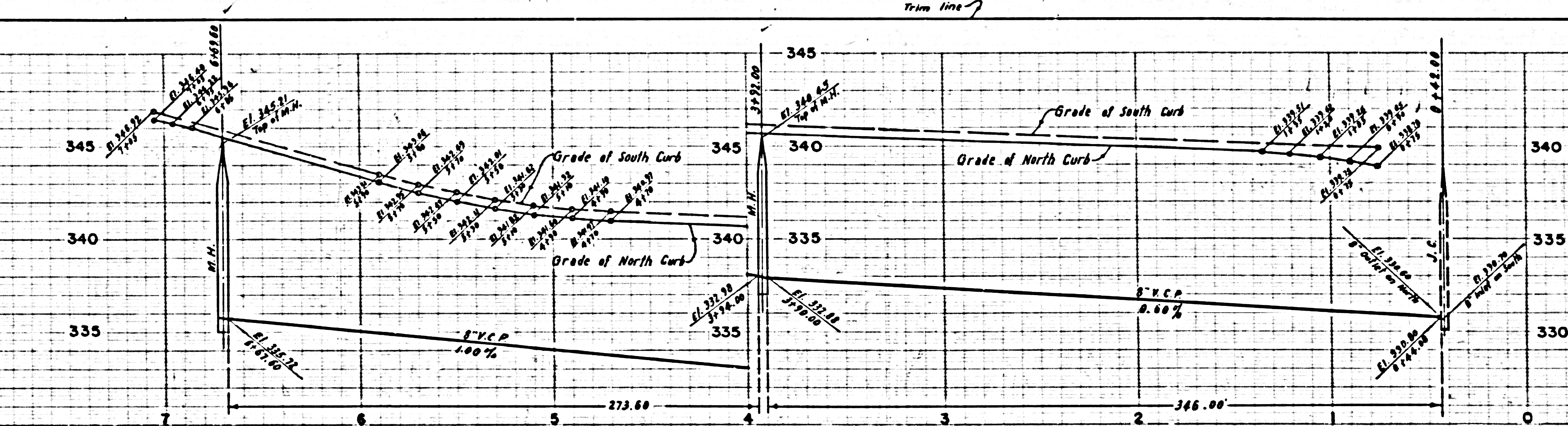
FOR LEGEND SEE PLAN NO. S-a-64

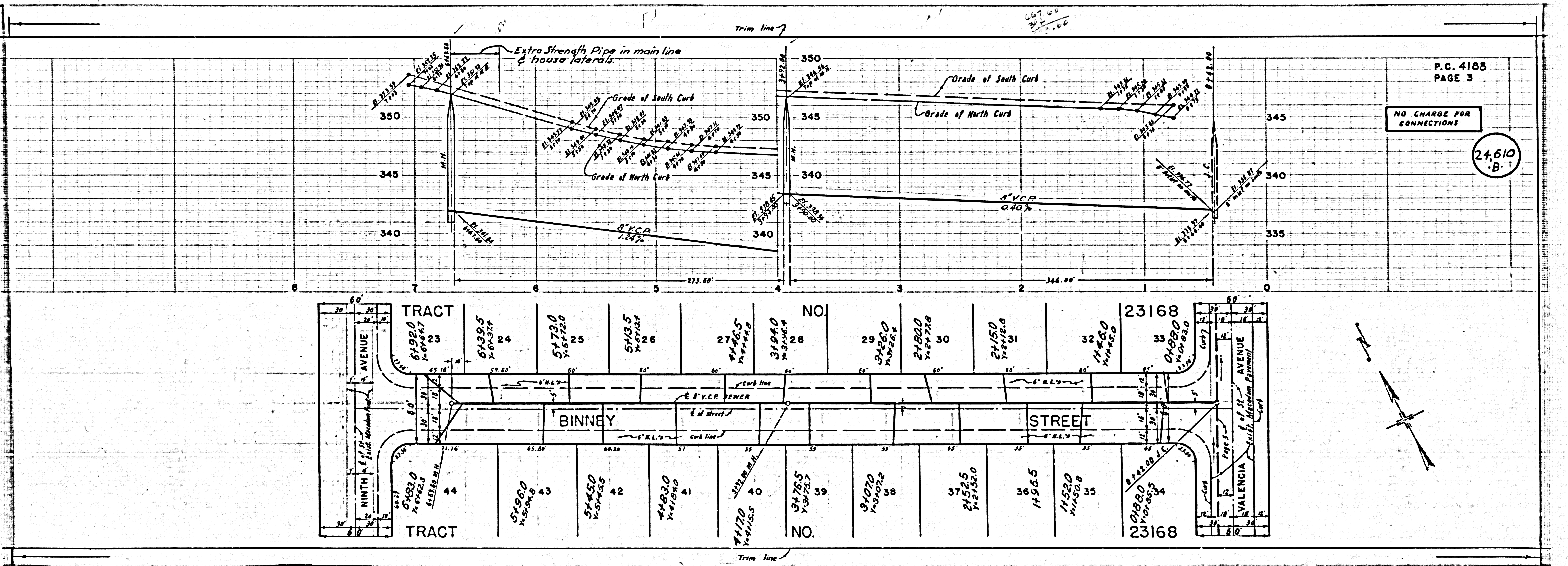
NOTE:
Grades to which this improvement is to be constructed are shown on plans and profiles. Grade points for top of curbs, center line of streets, or center line of alleys are shown by circles on profiles. At all points between designated points the grade shall be established so as to conform to a straight line drawn between said designated points.
Elevations are in feet above U.S.C. & G.S. sea level datum of 1929.
This drawing and the data hereon are hereby made a part of the specifications.
Work shall be constructed according to specifications on file in the office of the County Engineer and shall be prosecuted only in the presence of the County Engineer.
Before work can be started, the contractor must obtain a permit to excavate in County streets from the L.A. County Road Dept., 108 W. 2nd St. and make a deposit with the County Engineer, Room 314, 218 N. Broadway, sufficient to cover the cost of construction inspection and record plans.
Approval of this plan by the County of Los Angeles does not constitute a representation to the accuracy of the location of or the existence or non-existence of any underground utility, pipe, or structure within the limits of this project. This note applies to all sheets.
If work is to be done in a State Highway, a permit must be obtained from the State of California, Division of Highways, 120 South Spring Street.

COUNTY OF LOS ANGELES, CALIFORNIA
Approved, John A. Larke County Engineer Approved, A. M. Rawlin
CHIEF ENGR. SAN DIST. NO. 18
By *A. P. Collins* District Engineer By *J. P. ...* Office Engineer
Checked by *S. W. ...* 5-19-57
Office of County Engineer, Reg. C. E. No. 2506

NO CHARGE FOR
CONNECTIONS

24,609
-B-

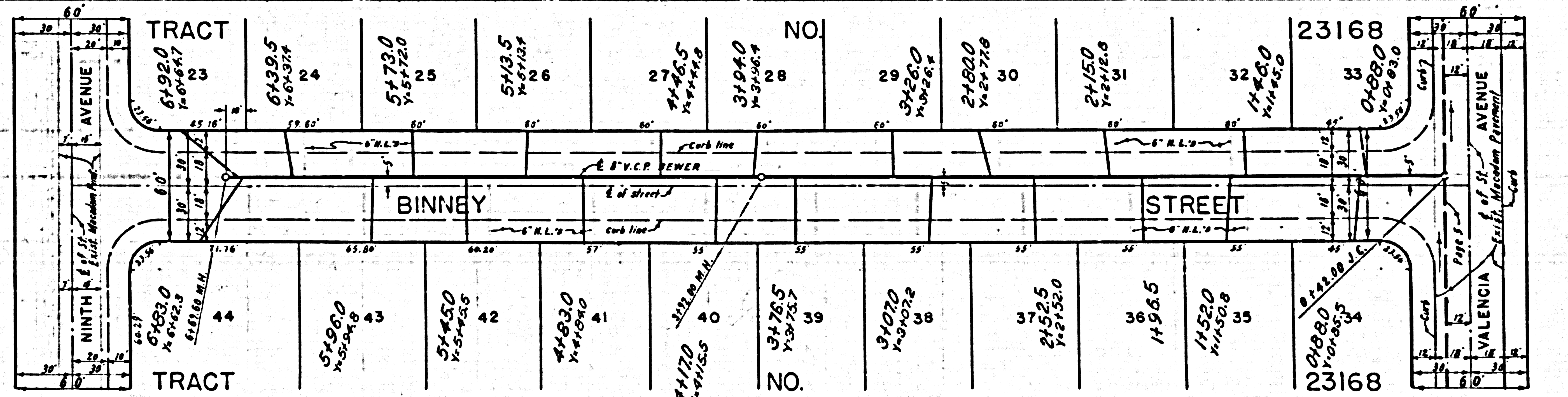




P.C. 4188
PAGE 3

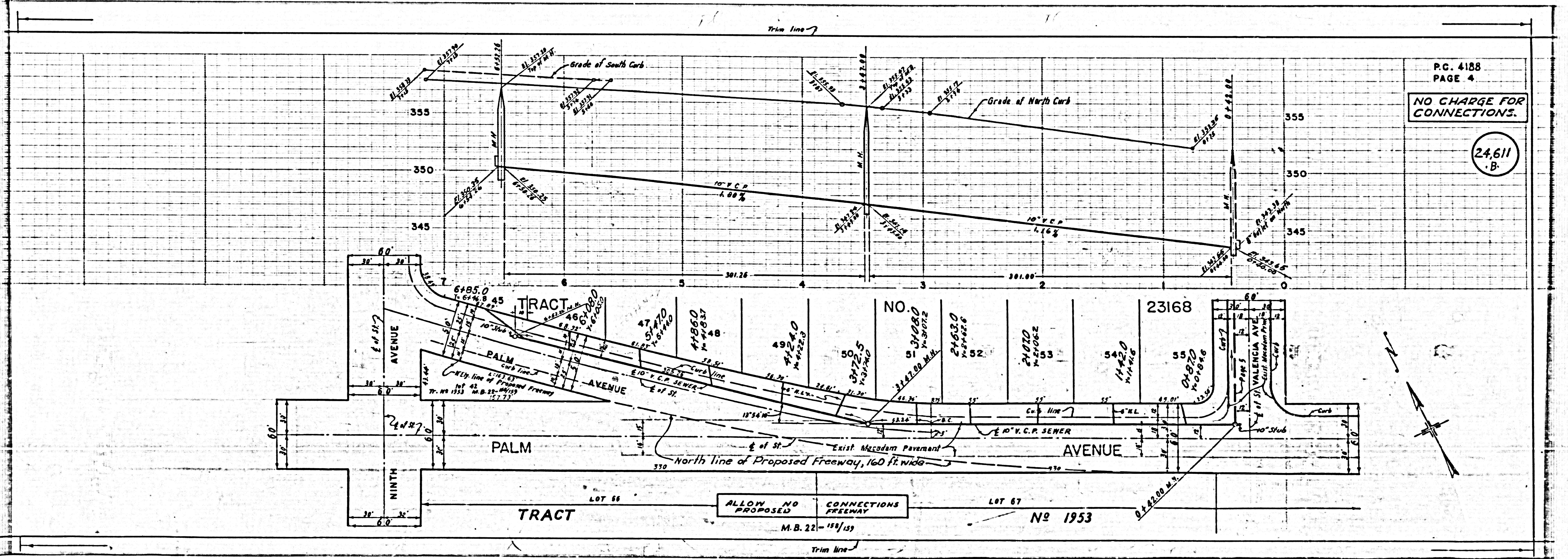
NO CHARGE FOR CONNECTIONS

24,610
B



NO CHARGE FOR
CONNECTIONS.

24,611
B



ALLOW NO
PROPOSED
CONNECTIONS
FREEWAY

M.B. 22-158/159

LOT 67

No 1953

LOT 56

TRACT

23168

TRACT

AVENUE

AVENUE

PALM

NINTH

VALENCIA AVE

AVENUE

North line of Proposed Freeway, 160 ft wide

Exist Macadam Pavement

10" V.C.P. SEWER

Grade of North Curb

Grade of South Curb

10% V.C.P. L. 1.88%

10% V.C.P. L. 1.16%

Trim line

Trim line

Trim line

Trim line

Trim line

Trim line

Trim line

Trim line

Trim line

Trim line

Trim line

Trim line

Trim line

Trim line

Trim line

Trim line

Trim line

Trim line

Trim line

Trim line

Trim line

Trim line

Trim line

Trim line

Trim line

Trim line

Trim line

Trim line

Trim line

Trim line

Trim line

Trim line

Trim line

Trim line

Trim line

Trim line

NO CHARGE FOR CONNECTIONS

24,612
-B-

