

Tram line  
**PUENTE BLDG. DIST. N°2**

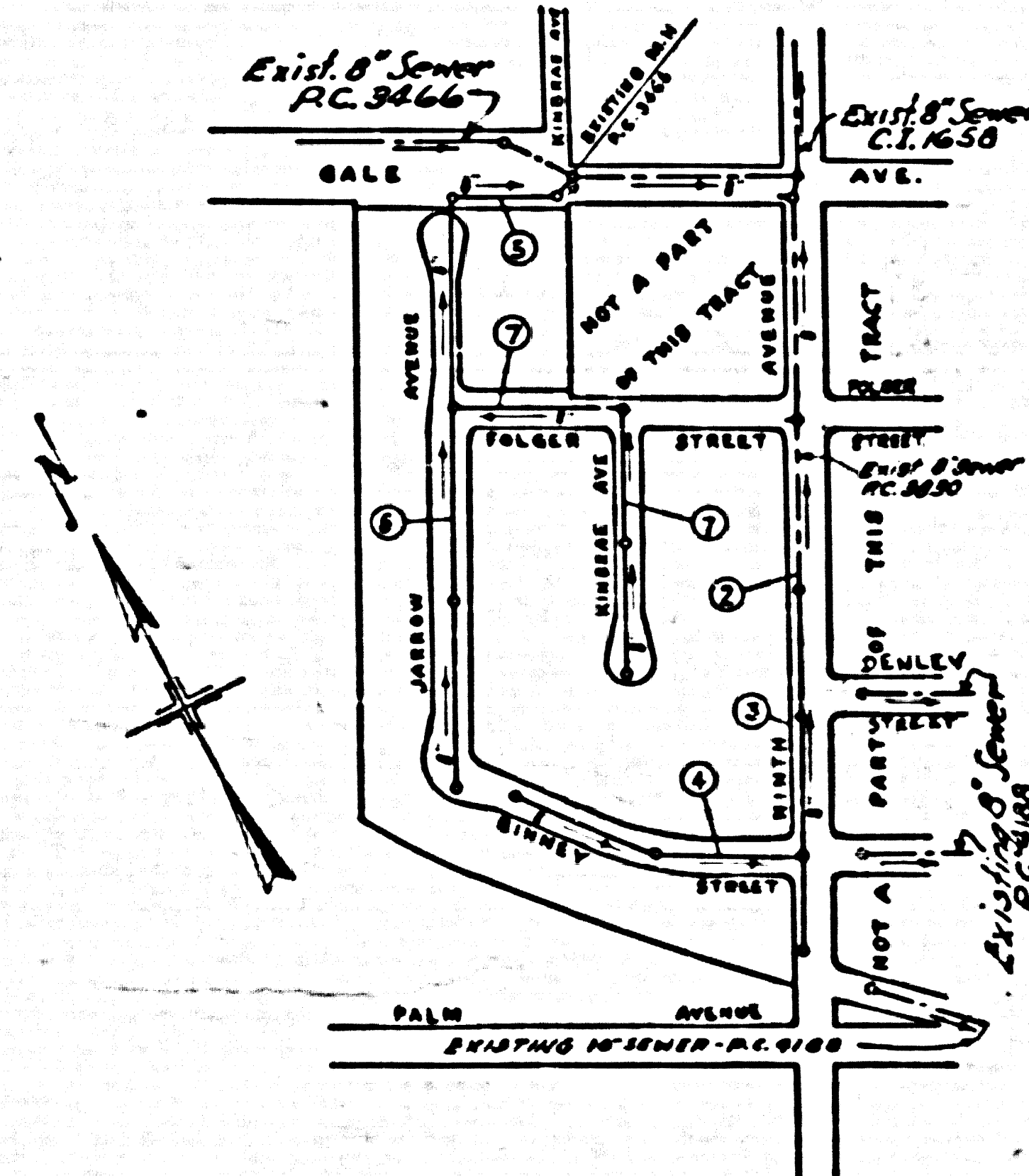
**NOTE:**  
 Provide stakes on the property lines or property lines produced at right angles to the sewer line at the center line of each manhole.  
 No representative of the County Engineer will survey or layout any portion of the work.  
 The owner or his authorized representative shall furnish the County Engineer with grade sheets and stations for all house laterals and Y branches and shall provide stakes for them at their proper locations with stationing plainly marked. Any change in location shall be requested in writing by the owner or his representative.  
 No revisions shall be made in these plans without the approval of the County Engineer.

1. Use standard manhole frames and covers, S-a-117.
  2. Use standard strength pipe except as noted.
  3. Use cement mortar, or "Wedge-Lock," or "Speed-Seal" for all vitrified clay pipe joints per Sec. 36 § 48 of Spec's.
  4. Resurface all trench within paved area to meet L.A. County Road Dept. or California State Highway Dept. requirements in accordance with permit.
  5. Encase four feet of sewer at points of interference with poles, Case III, S-a-172.
  6. House laterals to be constructed with inverts at property line 6 feet below curb grade except as noted.
  7. All structures shall be brick sewer structures, S-a-104.
  8. For allowable leakage test, use Formula No. 1, Spec's, Sec. 54.
  9. Manhole tops in unimproved Rights-Of-Way to be 6" above finish grade.
  10. **Private Engineer to furnish house lateral depth at property line below top of curb grade elevation for each house lateral on the grade sheet.**
- THE CONTRACTOR SHALL NOTIFY THE CONSTRUCTION & STORM DRAIN DIVISION BY TELEPHONE, MADISON 9-4787, EXT. 362, AT LEAST 24 HOURS BEFORE STARTING ANY WORK UNDER THIS CONTRACT.**

SHEET	PAGES
1	1-4
2	5-7

**CONNECTION CHARGES AS NOTED**  
*L. Tuttle 3-14-58*

**B.M. S.G. 1342 ELEV. 332.99**  
 Lead & Tack in Corner of Concrete Headwall of Culvert at S.W. Corner of Ninth Avenue & Gale Avenue.



**INDEX MAP**  
**TRACT N° 21527**  
 P.C. 4189  
 SCALE: 1" = 300'

PROFILE, ALIGNMENT AND GRADE OF  
**SANITARY SEWERS**  
 TO BE CONSTRUCTED IN  
**TRACT N° 21527**

P.C. 4189  
 PAGE 1

25,949

PRIVATE CONTRACT NO. 4189  
 W. S. 37  
**57 SHEETS 7 PAGES**  
 Scale: VERT. 1" = 40'  
 HORIZ. 1" = 40'  
 AUGUST, 1956  
 PREPARED IN THE OFFICES OF

*Shelby M. J. ...*  
 Reg. C. E. No. 2181

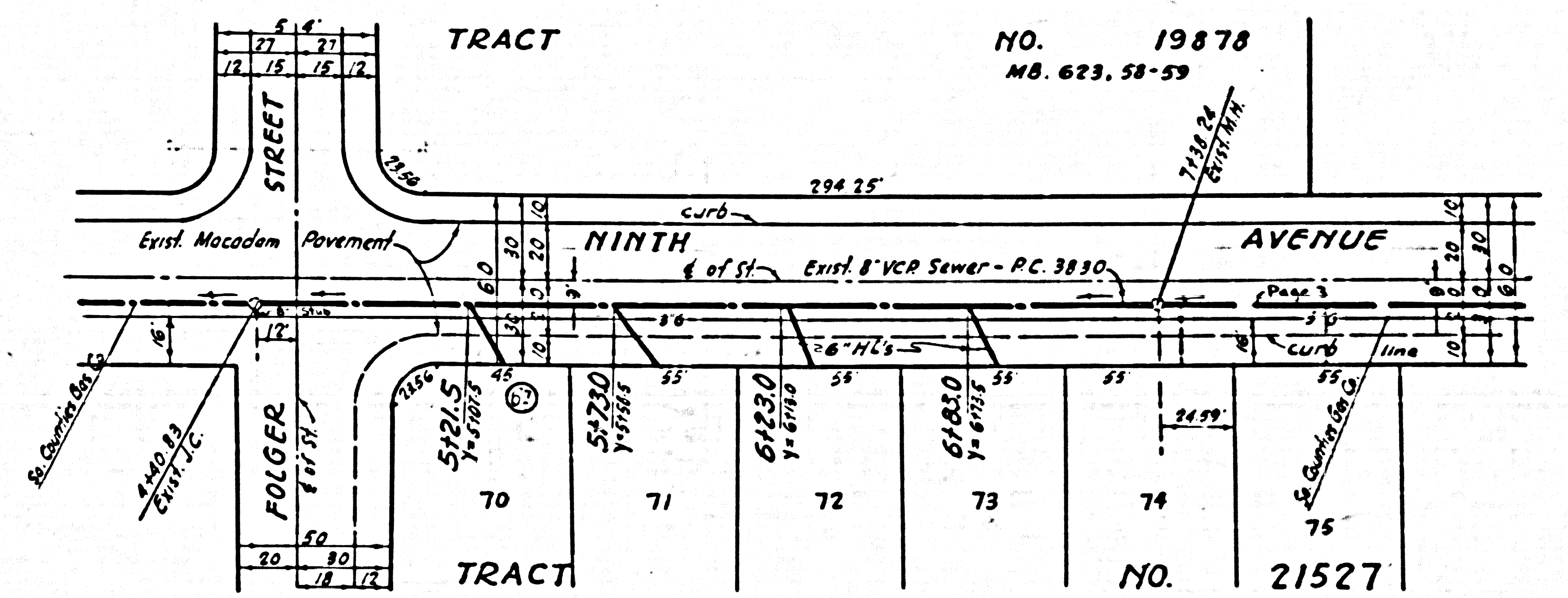
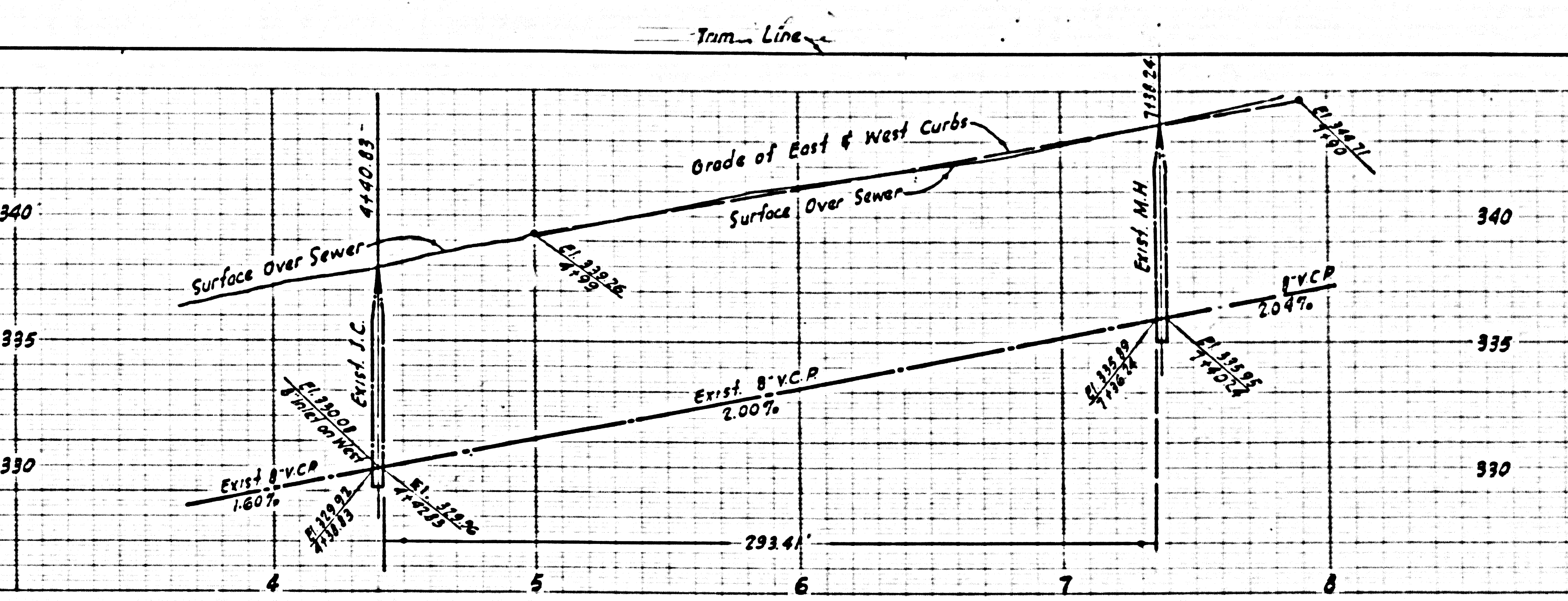
FOR LEGEND SEE PLAN NO. S-a-64

**NOTE:**  
 Grades to which this improvement is to be constructed are shown on plans and profiles. Grade points for top of curbs, center line of streets, or center line of alleys are shown by circles on profiles. At all points between designated points the grade shall be established so as to conform to a straight line drawn between said designated points.  
 Elevations are in feet above U.S.C. & G.S. sea level datum of 1929.  
 This drawing and the data hereon are hereby made a part of the specifications.  
 Work shall be constructed according to specifications on file in the office of the County Engineer and shall be prosecuted only in the presence of the County Engineer.  
 Before work can be started, the contractor must obtain a permit to excavate in County streets from the L.A. County Road Dept., 108 W. 2nd St. and make a deposit with the County Engineer, Rm. 36A, 253 So. Broadway sufficient to cover the cost of construction inspection and record plans.  
 Approval of this plan by the County of Los Angeles does not constitute a representation as to the accuracy of the location of or the existence or non-existence of any underground utility, pipe, or structure within the limits of this project. This note applies to all sheets.  
 If work is to be done in a State Highway, a permit must be obtained from the State of California, Division of Highways, 120 South Spring Street.

**COUNTY OF LOS ANGELES, CALIFORNIA**  
 Approved, John A. Lambie, County Engineer  
 Approved, A. M. Rawm  
 CHIEF ENGINEER SAN. DIST. NO. 15  
*... ..*  
 Checked by *Col. J. F. ...* 3/13/58  
 Office of County Engineer, Reg. C. E. No. 19, 637

25,950

NO CHARGE FOR CONNECTIONS

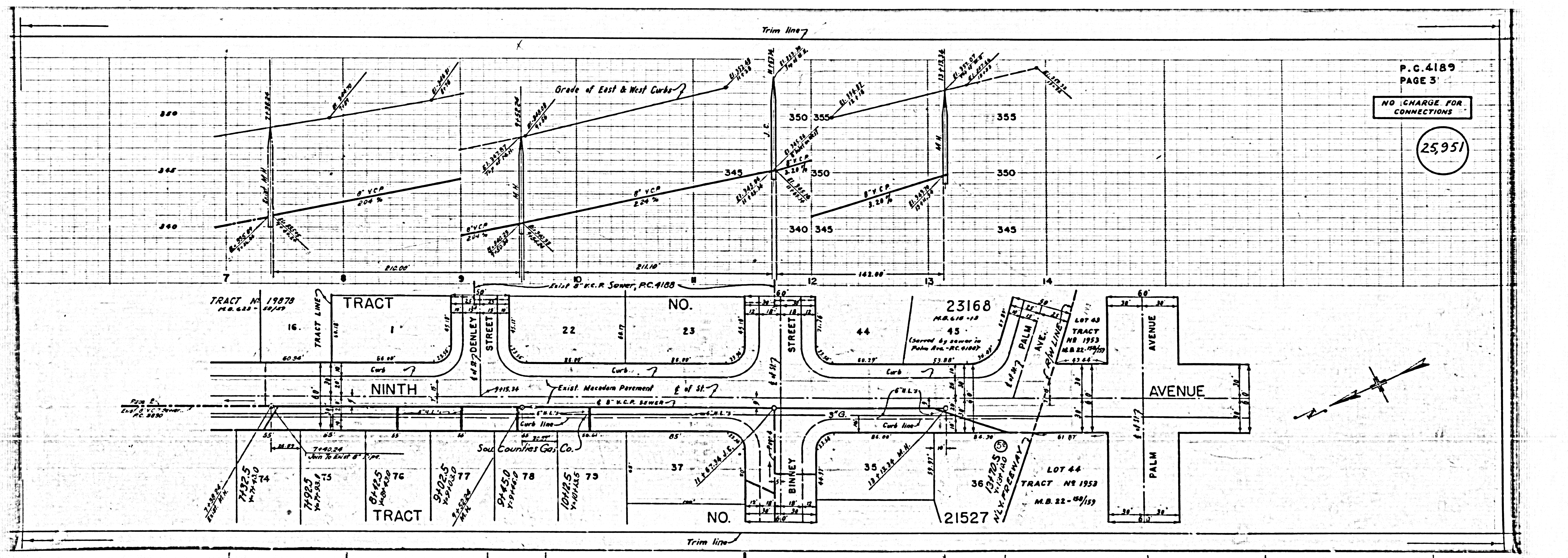


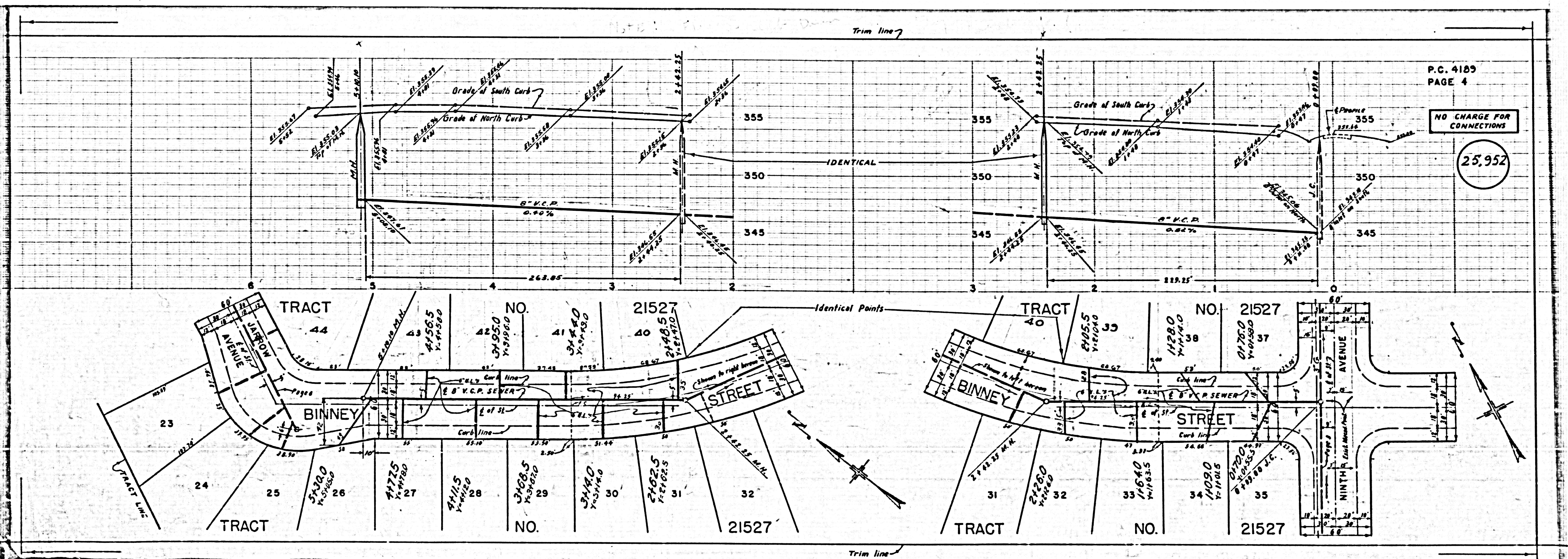
NO. 19878  
NB. 623, 58-59

NO. 21527

NO CHARGE FOR  
CONNECTIONS

25,951

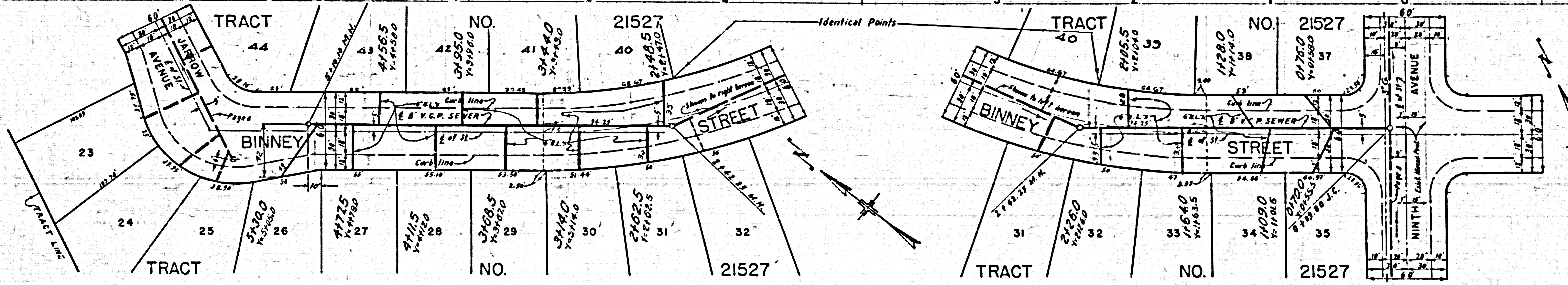




P.C. 4189  
PAGE 4

NO CHARGE FOR CONNECTIONS

25.952



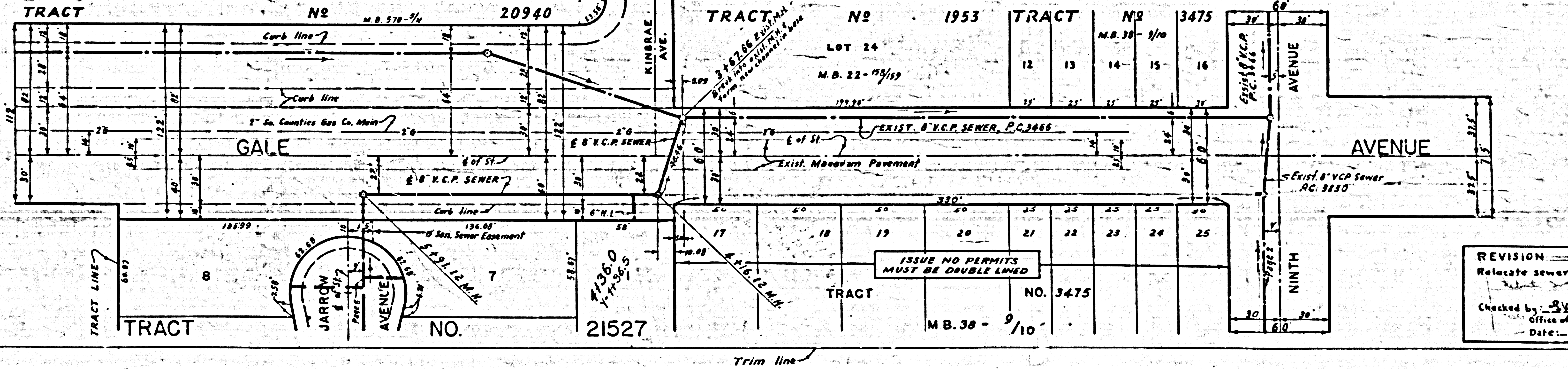
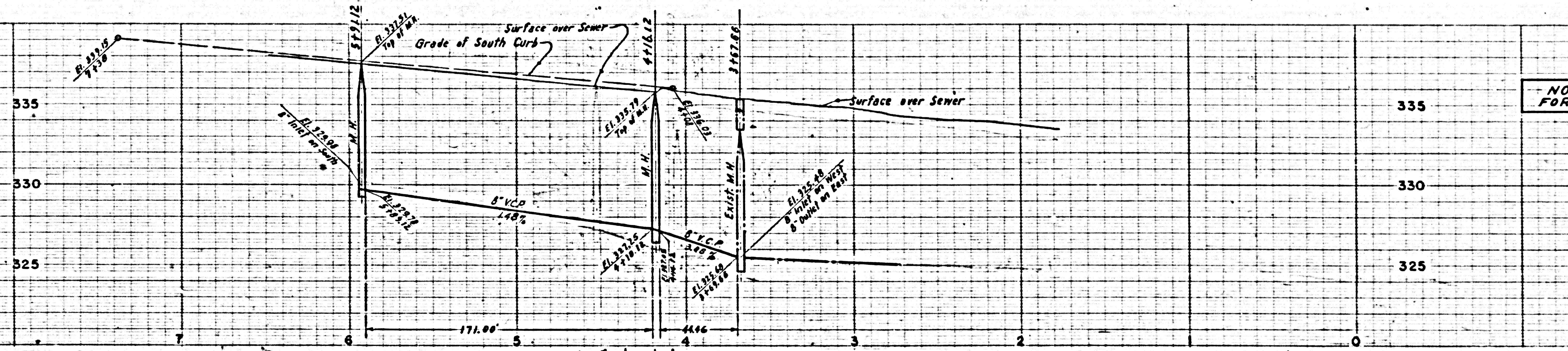
Identical Points

Trim line

Trim line

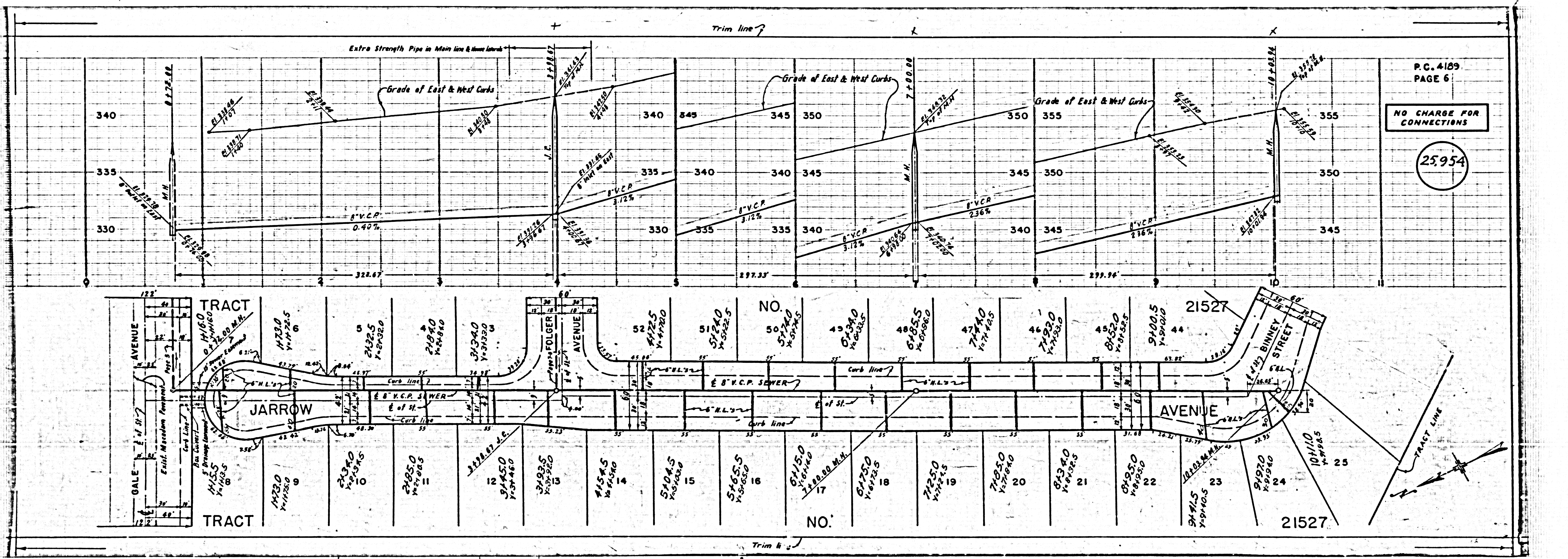
P.C. 4109  
PAGE 5

NO CHARGE  
FOR CONNECTIONS 25.953



REVISION  
Relocate sewer in Gale Avenue  
Checked by: *[Signature]*  
Office of County Engineer  
Date: 5-3-22

g/21



P.C. 4189  
PAGE 6

NO CHARGE FOR CONNECTIONS

25954

Trim line 7

Trim line 8

Extra Strength Pipe in Main line & Manholes

Grade of East & West Curbs

Grade of East & West Curbs

Grade of East & West Curbs

JARROW TRACT

NO. 44

NO. 45

NO. 46

NO. 47

NO. 48

NO. 49

NO. 50

NO. 51

NO. 52

NO. 53

NO. 54

NO. 55

NO. 56

NO. 57

NO. 58

NO. 59

NO. 60

NO. 61

NO. 62

NO. 63

NO. 64

JARROW TRACT

NO. 14

NO. 15

NO. 16

NO. 17

NO. 18

NO. 19

NO. 20

NO. 21

NO. 22

NO. 23

NO. 24

NO. 25

NO. 26

NO. 27

NO. 28

NO. 29

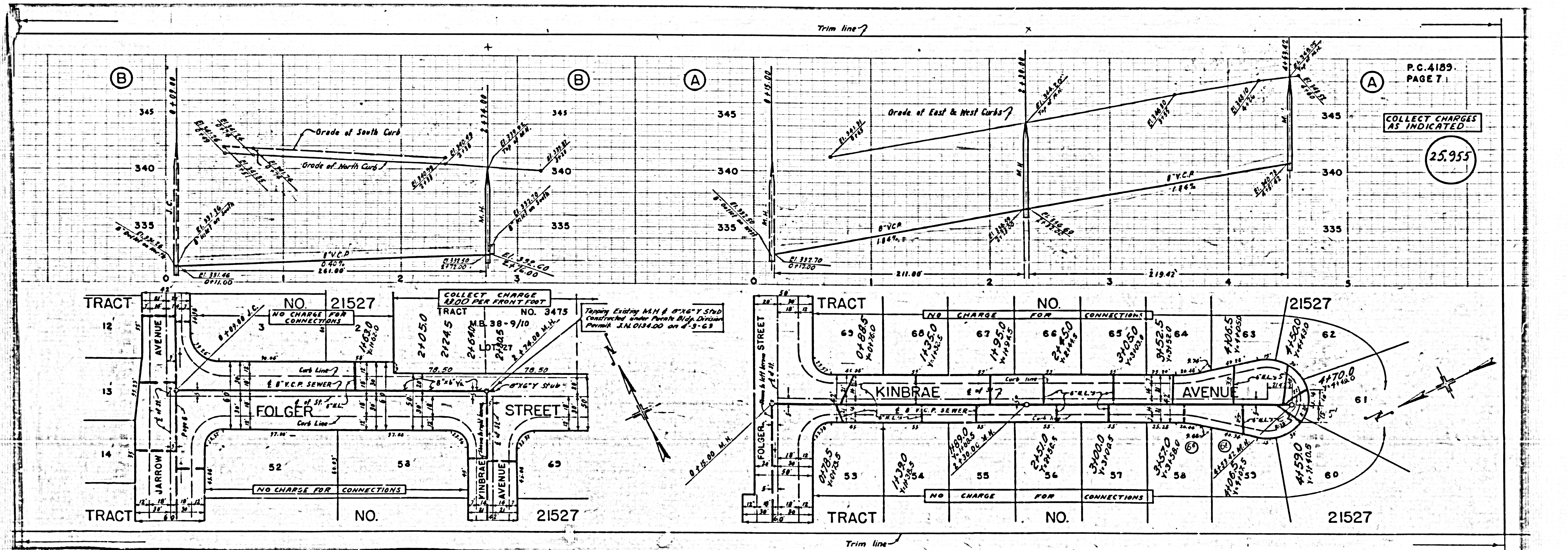
NO. 30

NO. 31

NO. 32

NO. 33

NO. 34



P.C. 4189  
PAGE 7.1

COLLECT CHARGE  
AS INDICATED

25,955

COLLECT CHARGE  
\$100 PER FRONT FOOT

NO. 21527

NO. 3475

NO. 21527

NO. 21527

NO. 21527

NO. 21527

NO. 21527

NO. 21527

Tapping Existing M.H. @ 8" x 6" Y STD  
Constructed under Public Bldg. Division  
Permit J.N. 0134.00 on 4-3-63

NO CHARGE FOR CONNECTIONS

NO CHARGE FOR CONNECTIONS

NO CHARGE FOR CONNECTIONS

NO CHARGE FOR CONNECTIONS

NO CHARGE FOR CONNECTIONS

NO CHARGE FOR CONNECTIONS

NO CHARGE FOR CONNECTIONS

NO CHARGE FOR CONNECTIONS