

BELFLOWER BLDG. DIST. NO. 4

PROFILE ALIGNMENT AND GRADE OF P.C. 4190
 SANITARY SEWERS PAGE 1
 TO BE CONSTRUCTED IN

TRACT No 18357

PRIVATE CONTRACT NO. 4190

W.S. 31

2 SHEETS, 4 PAGES

24,091

SCALE: 1" = 40' OCT., 1956

PREPARED IN THE OFFICES OF
 H.R. LOVETT & ASSOCIATES, INC.

BY *J.H. Patterson*
 REG. C. E. NO. 10410

FOR LEGEND SEE PLAN NO. S-A-64

NOTE:
 GRADES TO WHICH THIS IMPROVEMENT IS TO BE CONSTRUCTED ARE SHOWN ON PLANS AND PROFILES. GRADE POINTS FOR TOP OF CURBS, CENTER LINE OF STREETS, OR CENTER LINE OF ALLEYS ARE SHOWN BY CHECKS ON PROFILES. AT ALL POINTS BETWEEN DESIGNATED POINTS THE GRADE SHALL BE ESTABLISHED SO AS TO CONFORM TO A STRAIGHT LINE DRAWN BETWEEN SAID DESIGNATED POINTS.
 ELEVATIONS ARE IN FEET ABOVE M.S.L. & ARE LEFT OF CENTER OF PIPE.
 THIS DRAWING AND THE DATA HEREON ARE HEREBY MADE A PART OF THE SPECIFICATIONS.
 WORK SHALL BE CONSTRUCTED ACCORDING TO SPECIFICATIONS ON FILE IN THE OFFICE OF THE COUNTY ENGINEER AND SHALL BE PROSECUTED ONLY IN THE PRESENCE OF THE COUNTY ENGINEER.
 BEFORE WORK CAN BE STARTED, THE CONTRACTOR MUST OBTAIN A PERMIT TO EXCAVATE IN COUNTY STREETS FROM THE L.A. COUNTY ROAD DEPT., 100 W. 5TH ST. AND MAKE A DEPOSIT WITH THE COUNTY ENGINEER, ROOM 324 PAM AMERICAN BLDG., 225 SO. BROADWAY, SUFFICIENT TO COVER THE COST OF CONSTRUCTION INSPECTION AND RECORD PLANS.
 APPROVAL OF THIS PLAN BY THE COUNTY OF LOS ANGELES DOES NOT CONSTITUTE A REPRESENTATION AS TO THE ACCURACY OF THE LOCATION OF OR THE EXISTENCE OR NON-EXISTENCE OF ANY UNDERGROUND UTILITY PIPE, OR STRUCTURE WITHIN THE LIMITS OF THIS PROJECT. THIS NOTE APPLIES TO ALL PAGES.
 IF WORK IS TO BE DONE IN A STATE HIGHWAY, A PERMIT MUST BE OBTAINED FROM THE STATE OF CALIFORNIA, DIVISION OF HIGHWAYS, 120 SOUTH SPRING STREET.

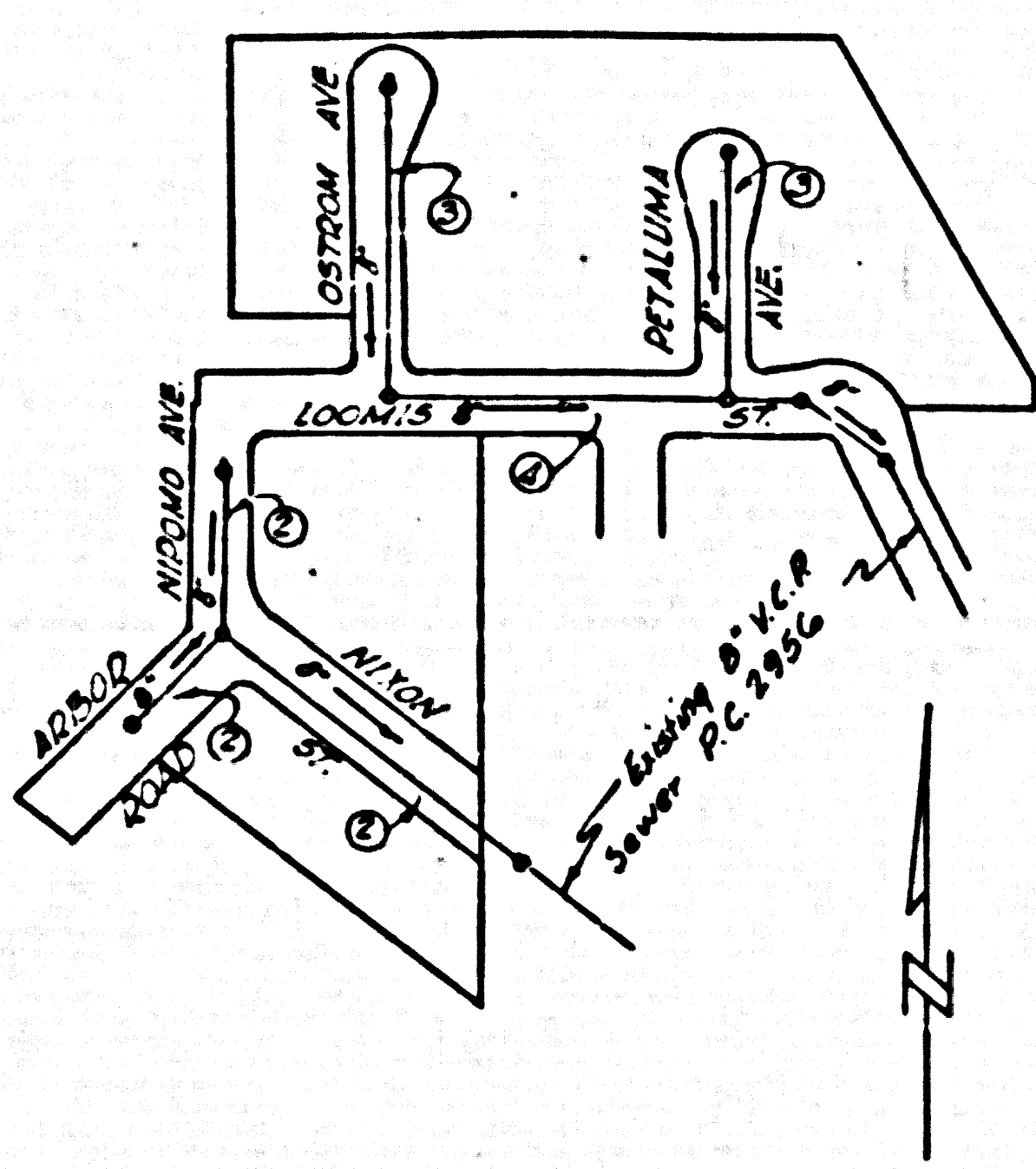
CITY OF LAKEWOOD, CALIFORNIA

APPROVED, JOHN A. LAMBE, CITY ENGINEER APPROVED, A. M. BAWN, CHIEF ENGINEER

BY *A.P. Collins* BY *J.H. Patterson*
 SANITATION ENGINEER DIVISION ENGINEER
 CHECKED BY *P.L. Kuhn* 12-14-56
 OFFICE OF CIVIL ENGINEER, REG. C. E. NO. 7860

- NOTES:
 PROVIDE STAKES ON THE PROPERTY LINE OR PROPERTY LINES PRODUCED AT RIGHT ANGLES TO THE SEWER LINE AT THE CENTER LINE OF EACH MANHOLE.
 NO REPRESENTATIVE OF THE COUNTY ENGINEER WILL SURVEY OR LAYOUT ANY PORTION OF THE WORK.
 THE OWNER OR HIS AUTHORIZED REPRESENTATIVE SHALL FURNISH THE COUNTY ENGINEER WITH GRADE SHEETS AND STATION FOR ALL HOUSE LATERALS AND Y BRANCHES AND SHALL PROVIDE STAKES FOR THEM AT THEIR PROPER LOCATIONS WITH STATION AND PLAINLY MARKED. ANY CHANGE IN LOCATION SHALL BE REQUESTED IN WRITING BY THE OWNER OR HIS REPRESENTATIVE.
 NO REVISIONS SHALL BE MADE IN THESE PLANS WITHOUT THE APPROVAL OF THE COUNTY ENGINEER.
1. USE STANDARD MANHOLE FRAMES AND COVERS, S-A-117, EXCEPT AS NOTED.
 2. USE JOINTS CONFORMING FOR ALL VITRIFIED CLAY PIPE JOINTS.
 3. RESURFACE ALL TRUCK WITHIN PAVED AREA TO MEET L. A. COUNTY ROAD DEPT. OR CALIF. STATE HIGHWAY DEPT. REQUIREMENTS IN ACCORDANCE WITH PERMITS.
 4. PLACE FOUR FEET OF SEWER AT POINTS OF INTERFERENCE WITH POLES, S-A-119.
 5. HOUSE LATERALS TO BE CONSTRUCTED WITH INVERTS AT PROPERTY LINE, 6" FEET BELOW CURB GRADE EXCEPT AS NOTED.
 6. ALL STRUCTURES SHALL BE BUILT SEWER EIGHT" MIN. S-A-104, EXCEPT AS NOTED.
 7. FOR ALLOWABLE LEAKAGE TEST USE FORMULA NO. 2, SPEC'S, SEC. 64.
 8. MANHOLES TOPS IN UNIMPROVED NIGHT-OF-WAY TO BE 8" ABOVE FINISHED GRADE.
 9. The private engineer is to furnish the house lateral depth of the property line below the top of curb elevation for each house lateral on the grade sheet.

BENCH MARK:
 BY 3382 ELEV. 44.078
 NAIL IN S.W. CORNER CONC. APRON
 TO BARN 100' N.W. FROM INTERSECTION
 OF STURDEWANT ROAD AND DEL ANO.

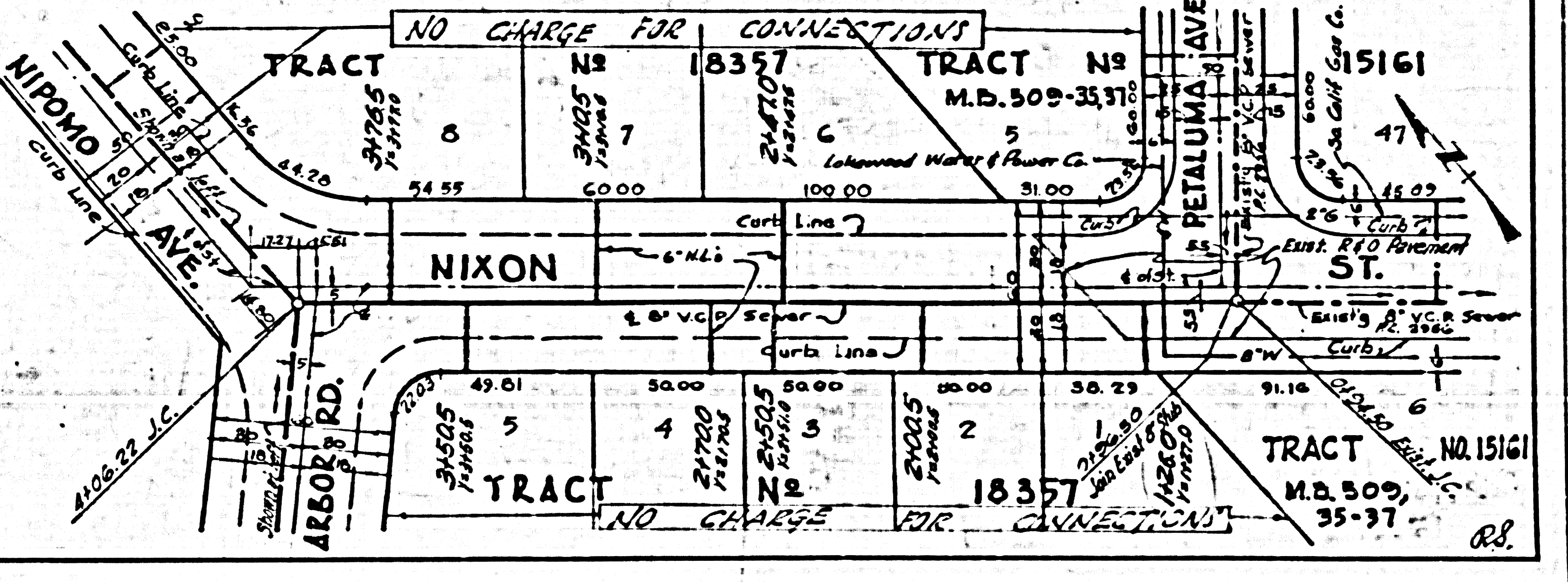
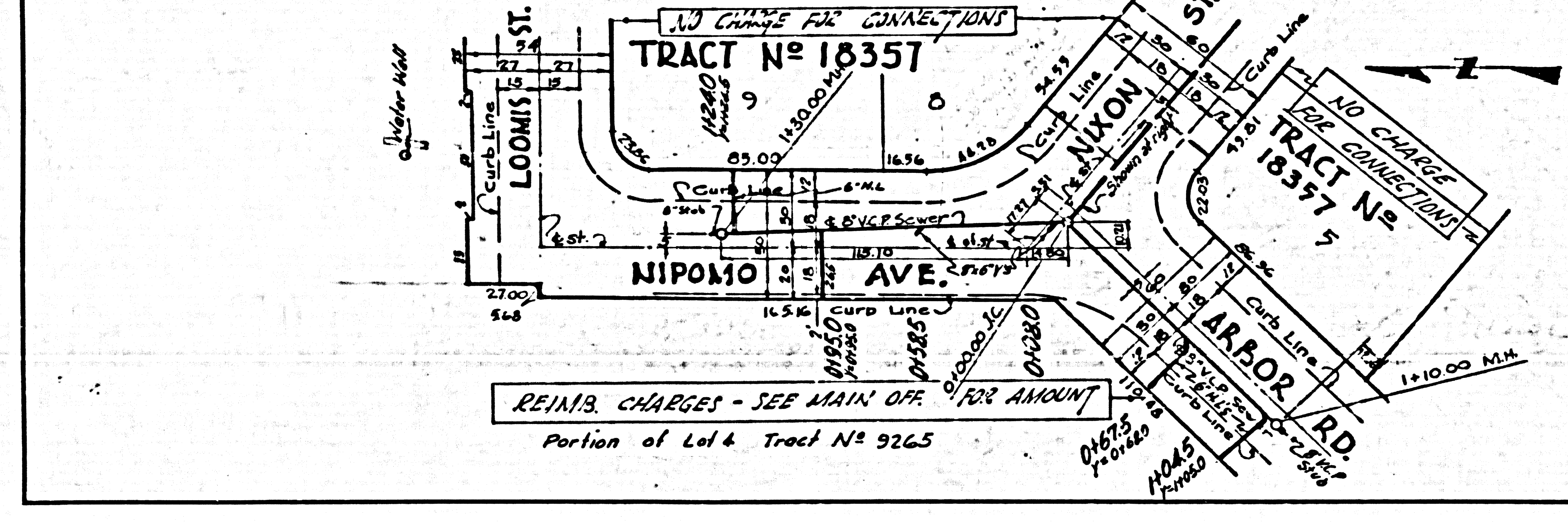
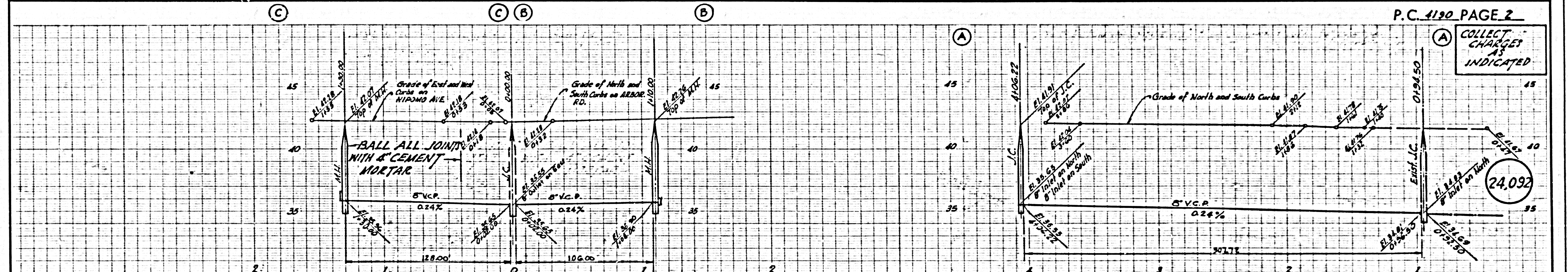


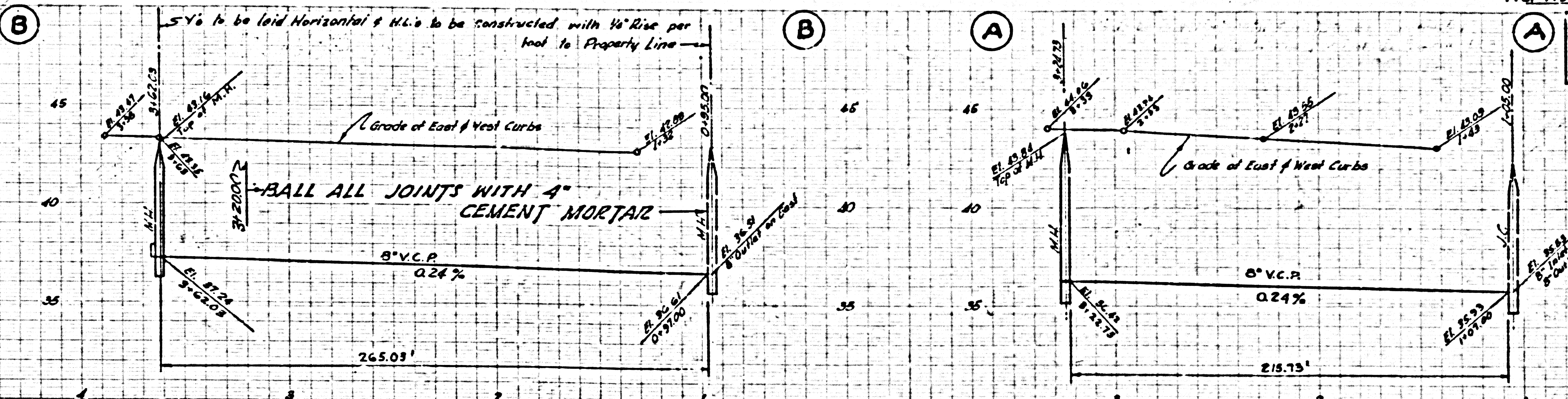
INDEX MAP
 SCALE: 1" = 200'
 TRACT No 18357
 R.C. 4190

TABLE	
SHEET NO.	PAGES
1	172
2	382

COLLECT CHARGES AS INDICATED
 12-17-56

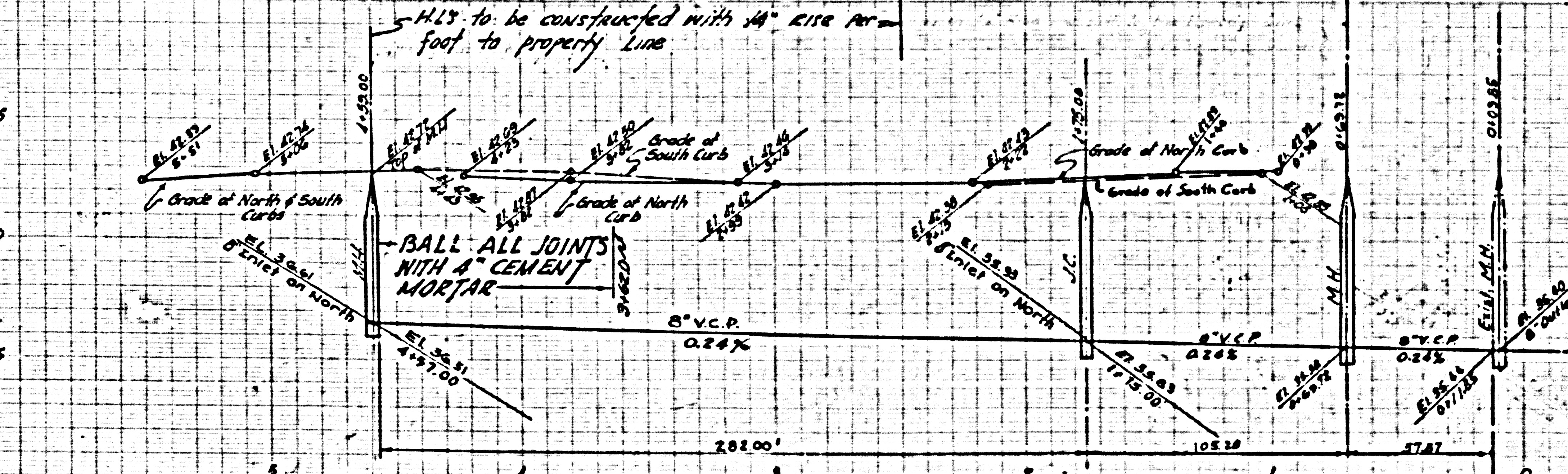
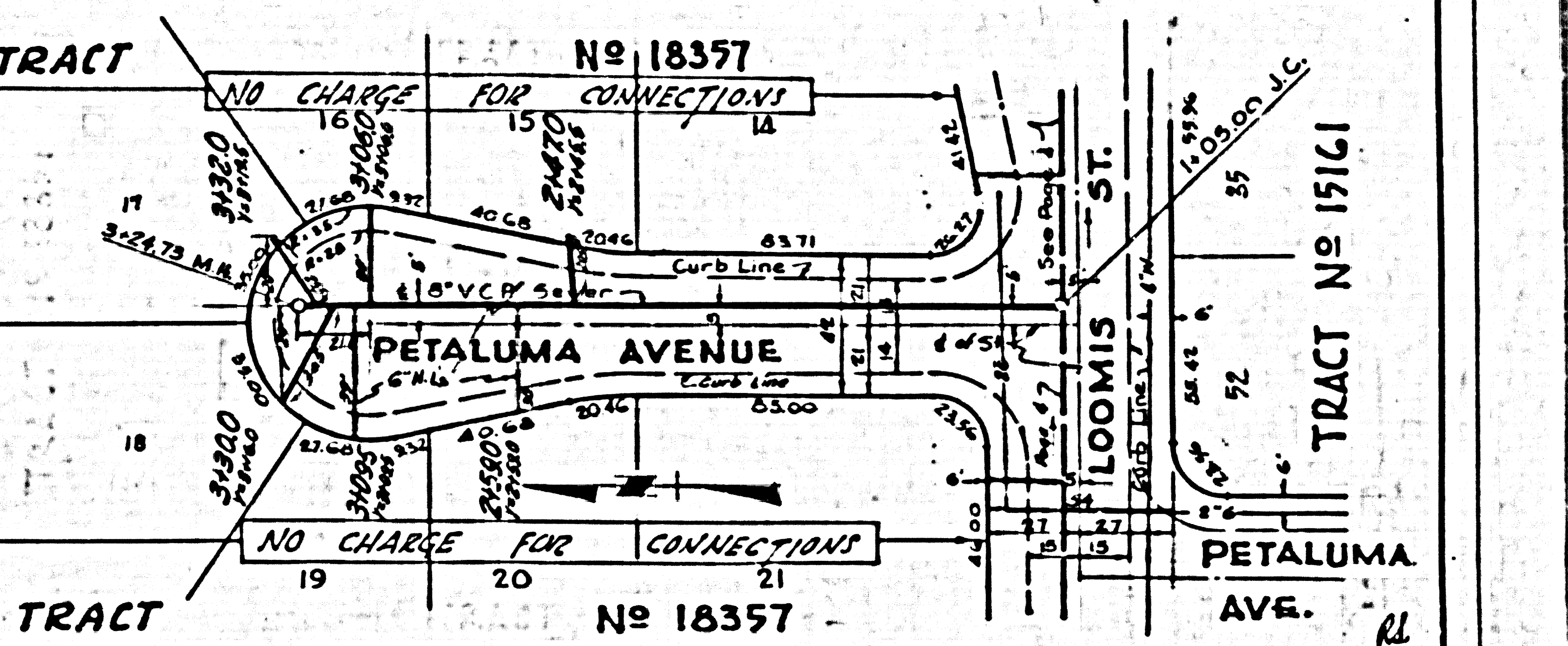
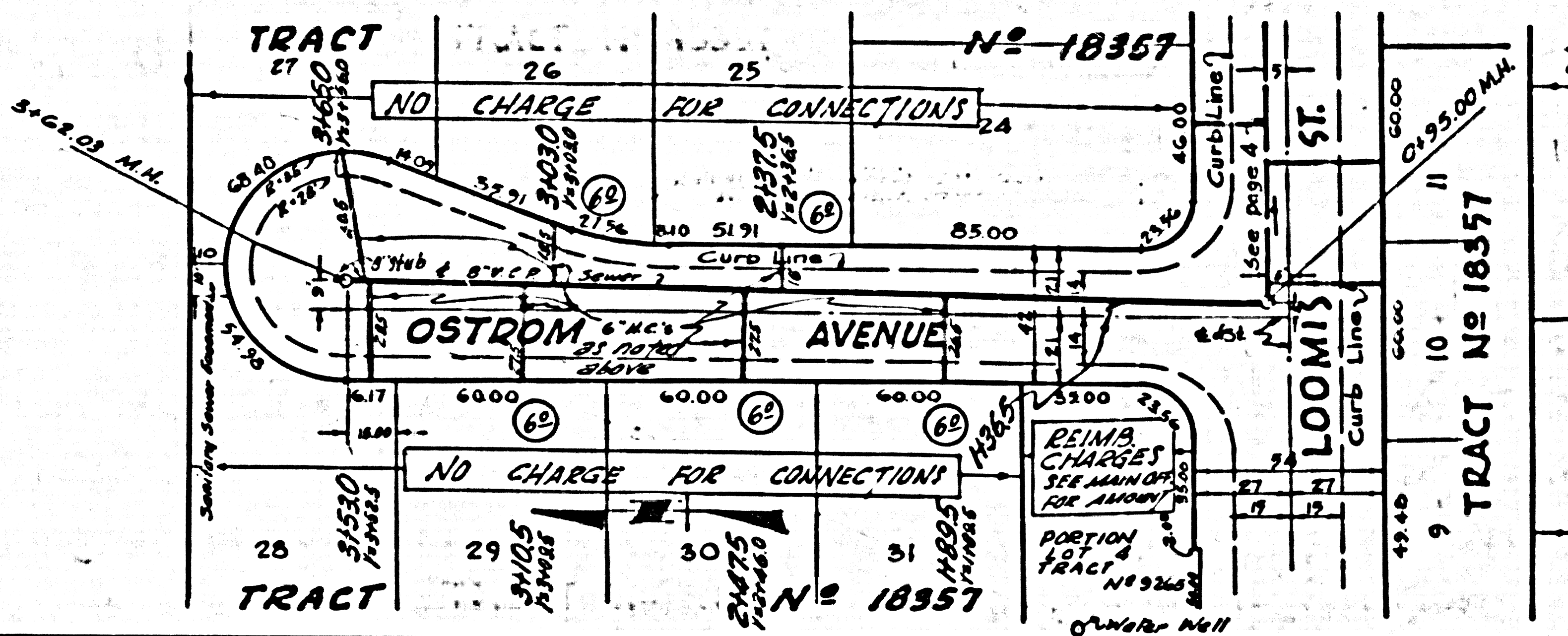
Checked 2-13-57 W. Mann





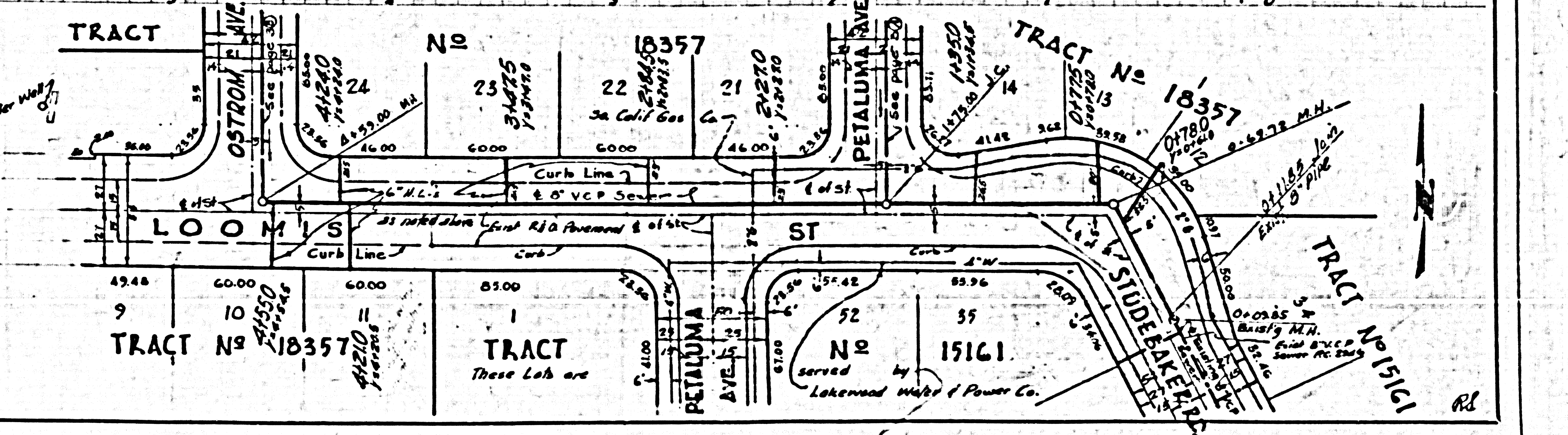
COLLECT CHARGES AS INDICATED

24,033



NO CHARGE FOR CONNECTIONS

24,094



What? 2951