

TEMPLE CITY BLDG. DIST. NO. 5

PROFILE ALIGNMENT AND GRADE OF P.C. 4195
 SANITARY SEWERS PAGE 1
 TO BE CONSTRUCTED IN
 RIW NORTH OF DUARTE ROAD

PRIVATE CONTRACT NO. 4195

W.S. 44

1 SHEET 2 PAGES

SCALE: VERT. 1"=4' HORIZ. 1"=40'

AUGUST, 1956

PREPARED IN THE OFFICES OF
 M.W. FINLEY CO.

By Leon W. Moore
 REG. C. E. NO. 2117

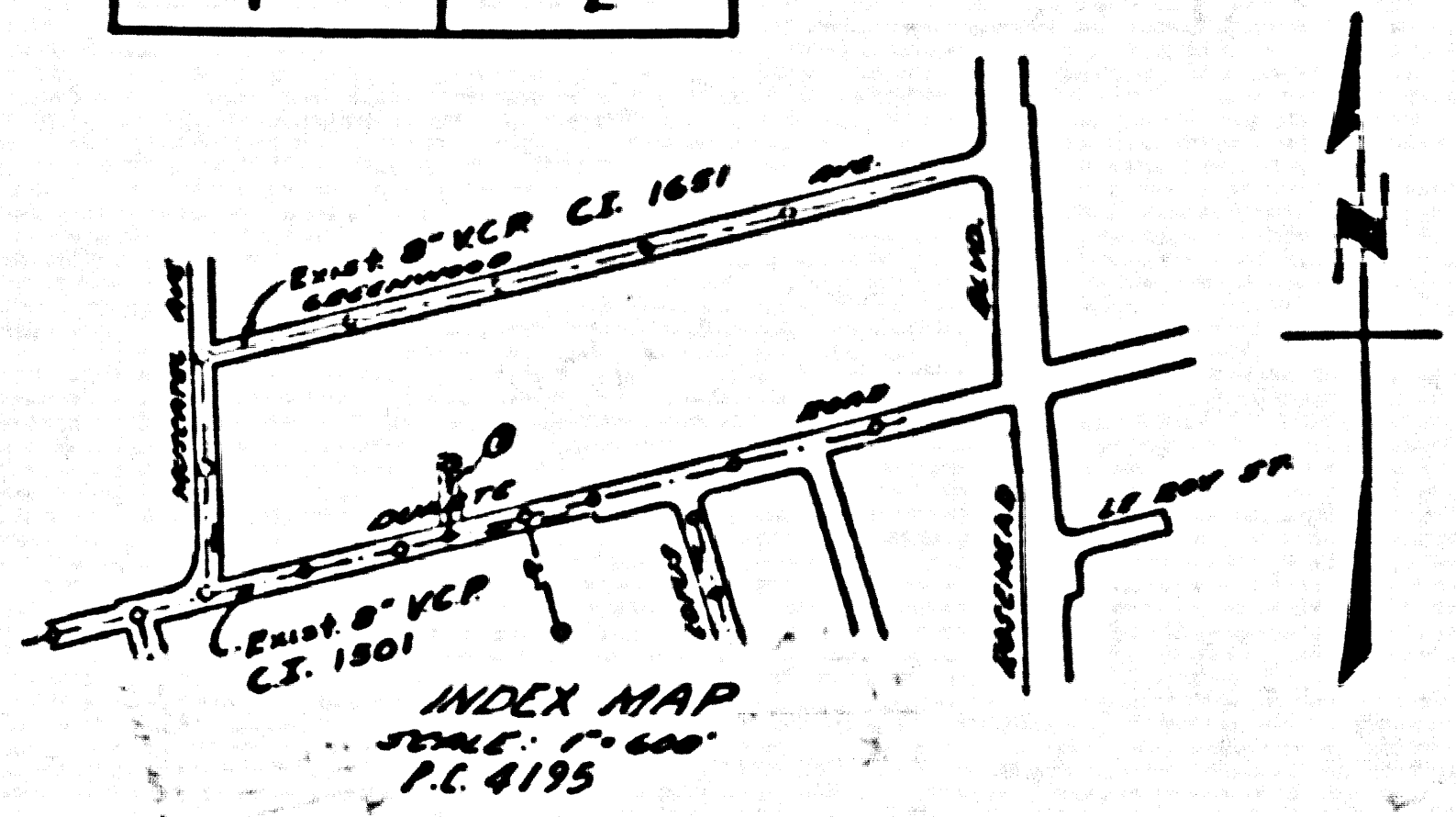
FOR LEGEND SEE PLAN NO. S-A-64

- NOTES**
- PROVIDE STAKES ON THE PROPERTY LINE OR PROPERTY LINES PRODUCED AT RIGHT ANGLES TO THE SEWER LINE AT THE CENTER LINE OF EACH MANHOLE.
 - NO REPRESENTATIVE OF THE COUNTY ENGINEER WILL SURVEY OR LAYOUT ANY PORTION OF THE WORK.
 - THE OWNER OR HIS AUTHORIZED REPRESENTATIVE SHALL FURNISH THE COUNTY ENGINEER WITH GRADE SHEETS AND STATION FOR ALL HOUSE LATERALS AND V BRANCHES AND SHALL PROVIDE STAKES FOR THEM AT THEIR PROPER LOCATIONS WITH STATION AND PLAIN MARKER. ANY CHANGE IN LOCATION SHALL BE REQUESTED BY WRITING BY THE OWNER OR HIS REPRESENTATIVE.
 - NO REVISIONS SHALL BE MADE IN THESE PLANS WITHOUT THE APPROVAL OF THE COUNTY ENGINEER.
 - USE STANDARD MANHOLE FRAMES AND COVERS, S-A-117, EXCEPT AS NOTED.
 - USE STANDARD TRENCH PIPE EXCEPT AS NOTED.
 - USE STANDARD TRENCH FOR ALL VENTED CLAY PIPE JOINTS.
 - RESURFACE ALL TRENCH WITHIN PAVED AREA TO MEET L. A. COUNTY ROAD DEPT., OR CALIF. STATE HIGHWAY DEPT. REQUIREMENTS IN ACCORDANCE WITH PERMITS.
 - ENCASE FOUR FEET OF SEWER AT POINTS OF INTERFERENCE WITH POLES, S-A-119.
 - HOUSE LATERALS TO BE CONSTRUCTED WITH INVERTS AT PROPERTY LINE. SEE NOTE FINISHED GRADE OF FIN.
 - ALL STRUCTURES SHALL BE BUILT BY STRUCTURAL, S-A-124, EXCEPT AS NOTED.
 - FOR ALLOWABLE LEAKAGE TEST USE FORMULA NO. 1 SPEC. SEC. 84.
 - MANHOLE TOPS IN UNIMPROVED RIGHTS OF WAY TO BE LEVEL WITH FINISHED GRADE.
 - THE PRIVATE ENGINEER IS TO FURNISH THE HOUSE LATERAL DEPTH AT THE PROPERTY LINE BELOW THE ELEVATION OF CENTER LINE OF SEWER MAIN OF WHICH FOR EACH HOUSE LATERAL ON THE GRADE SHEET

217.7859 So Side Duarte Rd. of Marcelle Avenue to North, East Side in North and East Side of Drive to House No. 1835, ELEV. 511.460, 1953 ADJ. F.B. 1489-189

INDEX TABLE	
SHEET	PAGES
1	2

NO CHARGE FOR CONNECTIONS
 S.K. Oida 1-23-57



NOTE

GRADES TO WHICH THE IMPROVEMENT IS TO BE CONSTRUCTED ARE SHOWN ON PLANS AND PROFILE. GRADE POINTS FOR TOP OF CURB, CENTER LINE OF STREETS, OR CENTER LINE OF ALLEYS ARE SHOWN BY CIRCLES ON PROFILE AT ALL POINTS BETWEEN DESIGNATED POINTS THE GRADE SHALL BE ESTABLISHED SO AS TO CONFORM TO A STRAIGHT LINE DRAWN BETWEEN SAID DESIGNATED POINTS.

ELEVATIONS ARE IN FEET ABOVE U.S.C. AND M.S. SEA LEVEL DATUM AND 1989.

THIS BUILDING AND THE DATA HEREON ARE HEREBY MADE A PART OF THE SPECIFICATIONS.

WORK SHALL BE CONSTRUCTED ACCORDING TO SPECIFICATIONS ON FILE IN THE OFFICE OF THE COUNTY ENGINEER AND SHALL BE INSPECTED ONLY BY THE PRESENCE OF THE COUNTY ENGINEER.

BEFORE WORK CAN BE STARTED, THE CONTRACTOR MUST OBTAIN A PERMIT TO EXCAVATE IN COUNTY STREETS FROM THE L. A. COUNTY ROAD DEPT. THE PERMIT MUST BE OBTAINED FROM THE COUNTY ENGINEER, ROOM 504 PEARL ALLEY, NEW YORK, N.Y. 10038, BROADWAY SUPPLEMENT TO COVER THE COST OF CONSTRUCTION INSPECTION AND RECORD PLANS.

APPROVAL OF THIS PLAN BY THE COUNTY OF LOS ANGELES DOES NOT CONSTITUTE A REPRESENTATION AS TO THE ACCURACY OF THE LOCATION OF OR THE EXISTENCE OR NON-EXISTENCE OF ANY UNDERGROUND UTILITY PIPE, OR STRUCTURE WITHIN THE RIGHTS OF THE PROJECT THIS NOTE APPLIES TO ALL PAGES.

IF WORK IS TO BE DONE IN A STATE HIGHWAY, A PERMIT MUST BE OBTAINED FROM THE STATE OF CALIFORNIA, DIVISION OF HIGHWAYS, 120 SOUTH SPRING STREET.

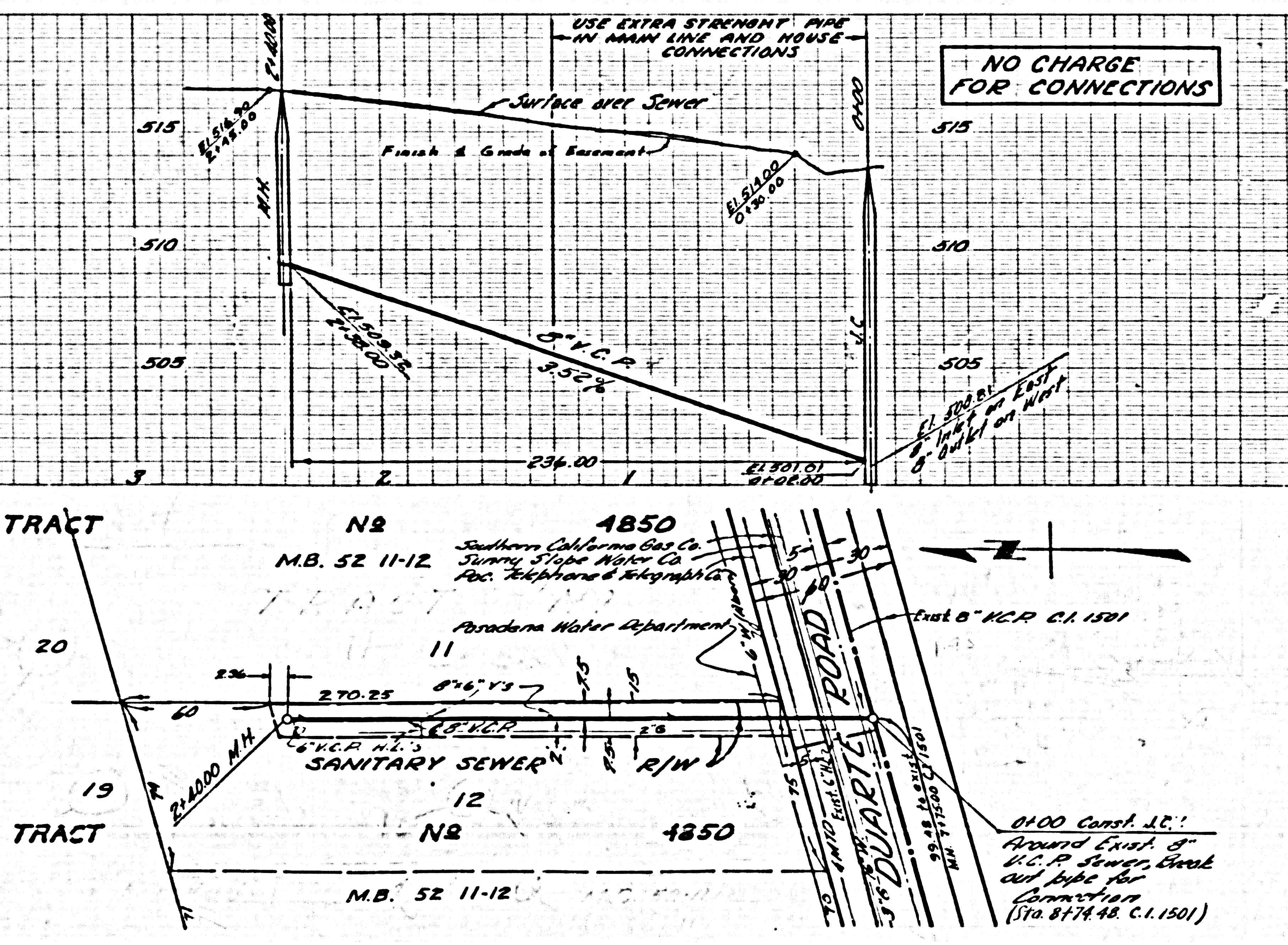
COUNTY OF LOS ANGELES, CALIFORNIA

APPROVED, JOHN A. LAMBE, COUNTY ENGINEER APPROVED, A. M. BAWN, CHIEF ENGINEER
 CO. SAL. DIST. NO. 15

By A.P. Ch... By S.K. Oida
 SANITATION ENGINEER OFFICE ENGINEER

CHECKED BY S.K. Oida 1-23-57
 OFFICE OF COUNTY ENGINEER, REG. C. E. NO. 3406

P.C. 4195 PAGE 2



RL

P.C. 4195