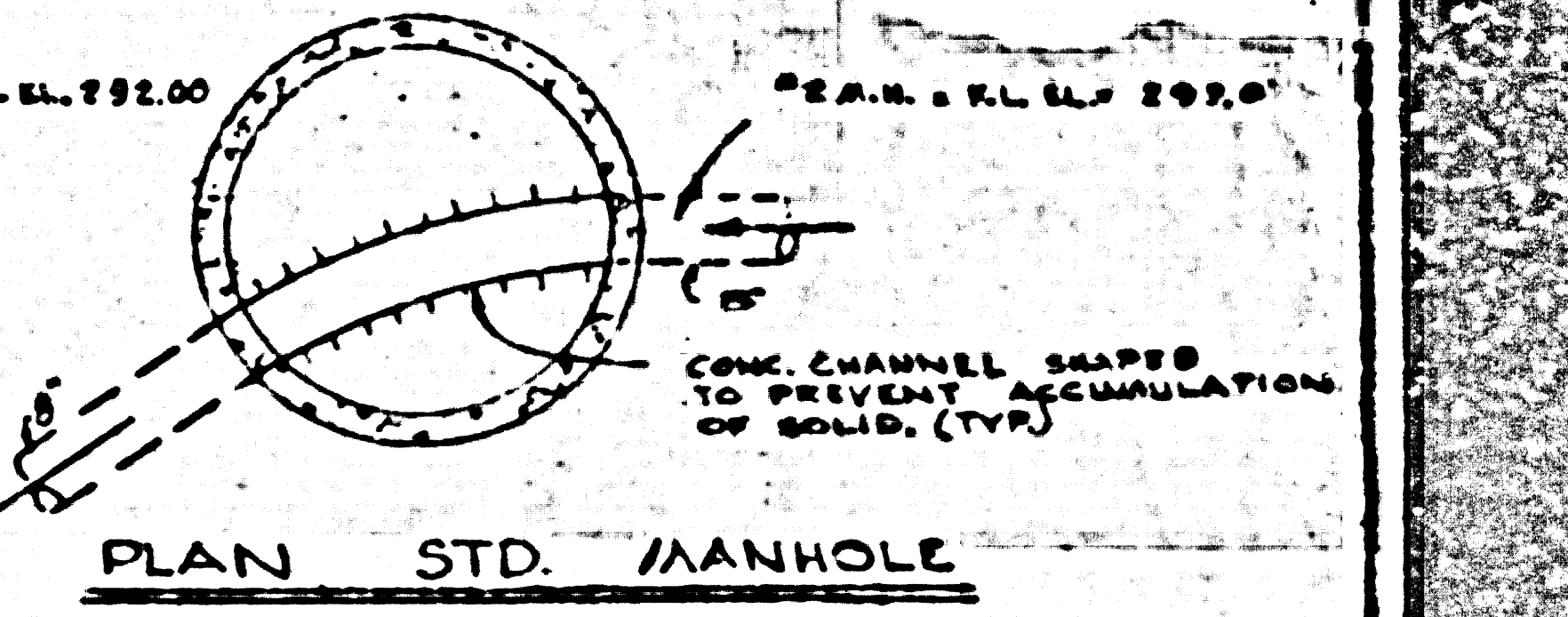


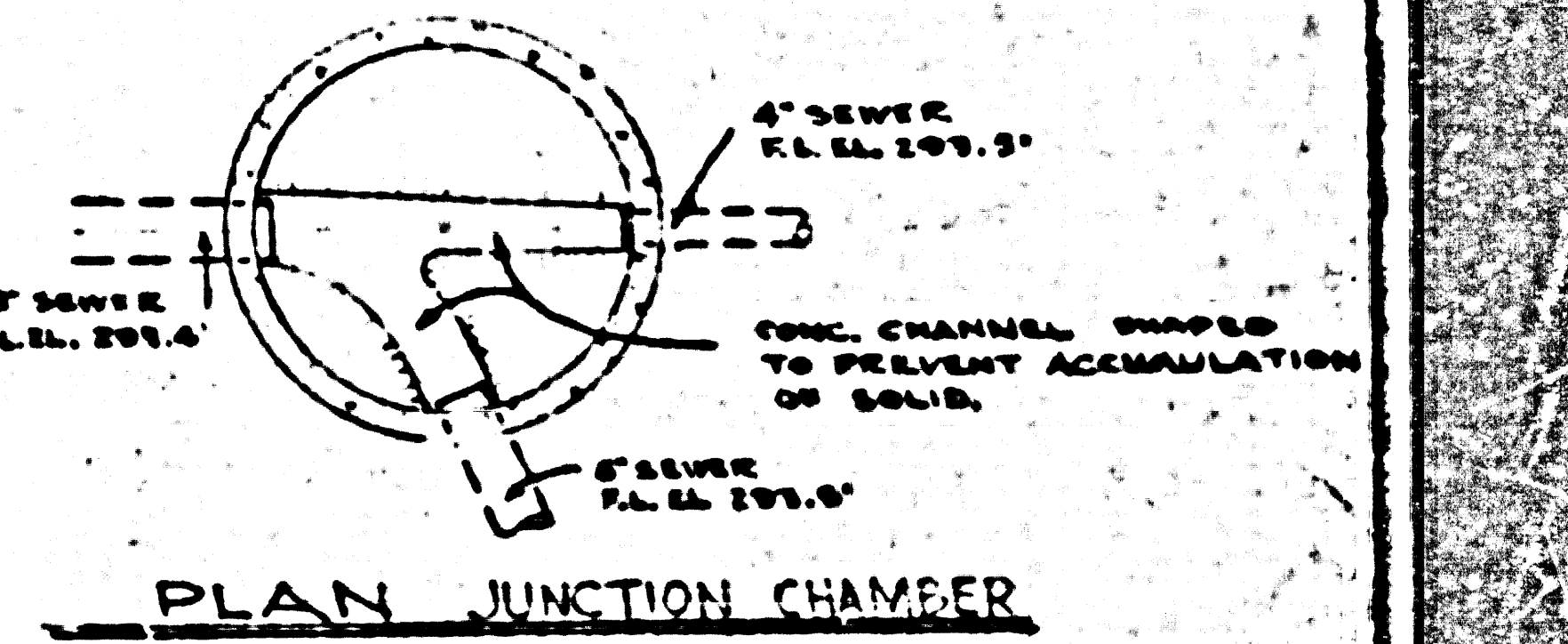
TRACT NO 701  
M.B. 16, 110-111  
LOT 57

PROFILE  
SCALE: HORIZONTAL - 1" = 82'-0"  
VERTICAL - 1" = 16'-0"

1. USE STANDARD MANHOLE FRAMES AND COVERS
2. ONE STANDARD MANHOLE WITH 12" DIA. IN 10' DIA. RINGS
3. USE CONCRETE MANHOLES FOR ALL VERTICAL CLAY PIPE
4. REINFORCE ALL PIPES WITH RAYON RAYON ALL TO MEET THE REQUIREMENTS OF CALIFORNIA STATE ENGINEERING BOARD
5. BRIDGE HOLES SHALL BE 18" BY 18" AT POINTS OF CROSSING
6. ALL STRUCTURES SHALL BE BUILT WITH 2" MIN. CONC.
7. FOR ALLOWABLE LEAKAGE TEST, USE 10" DIA.

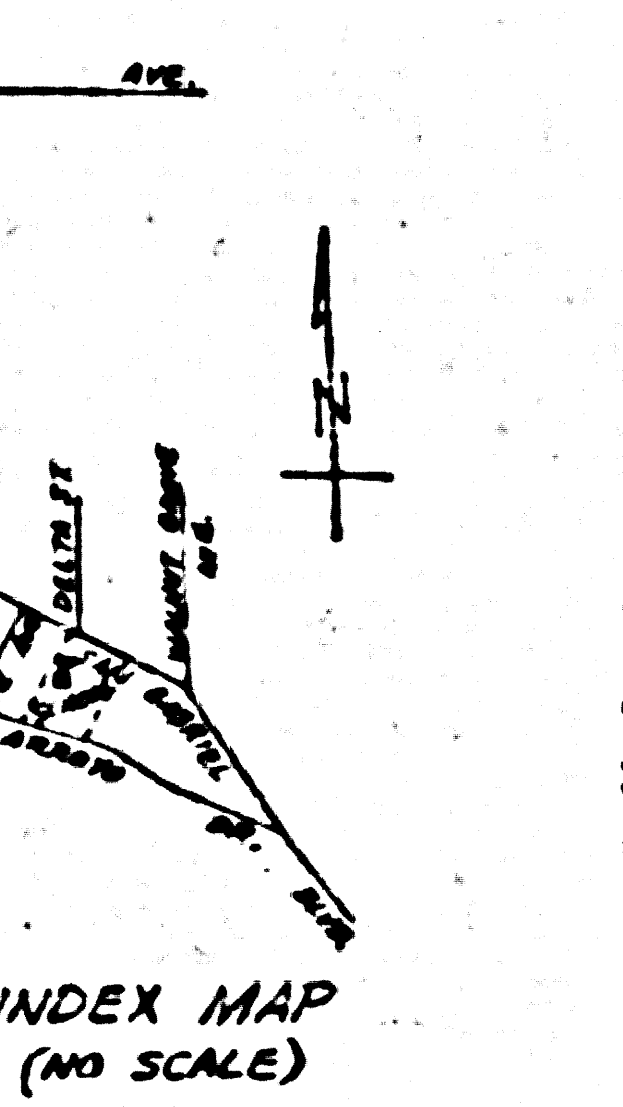


NOTE: MANHOLES SHALL BE AS PER LOS ANGELES COUNTY STANDARD MANHOLE NO. 5-2-104.



PRIVATE CONTRACT 4196  
COUNTY OF LOS ANGELES, CALIFORNIA

APPROVED: JOHN L. LAMBE, COUNTY ENGINEER  
APPROVED: [Signature], SANITATION ENGINEER  
APPROVED: [Signature], CIVIL ENGINEER  
CHECKED: [Signature], 10-15-56



B.M. N.W. 546 ELEV. 346.516 P.B. 142-145  
BY SPK. IN C.B. 3.6" W. OR W. END C.R.  
S.W. COR. SAN GABRIEL BLVD. & GRAND VIEW AVE.

JOHN F. REARDON & ASSOCIATES  
CONSULTING ENGINEERS  
17638 SHERMAN WAY  
MIRAMONTE, CALIF.  
DRAWS 27454

SEWER MAIN LAYOUT  
DON BOSCO  
TECHNICAL HIGH SCHOOL  
1151 NO. SAN GABRIEL BLVD. LOS ANGELES 40  
ROMAN CATHOLIC ARCH BISHOP OF LOS ANGELES

DATE: 10-9-56  
DRAWN BY: [Blank]  
CHECKED BY: [Blank]

M. L. HANKER & G. LAWRENCE OTT  
ARCHITECTS  
4324 WEST 100th AVE. LOS ANGELES 19  
MEMBERS OF THE AMERICAN INSTITUTE OF ARCHITECTS