

D.M. Rd. Dept. SY 2250 Elev. 54.358  
 183<sup>rd</sup> St & Roseton Ave. N.E. Corner  
 L & T. in con. curb. East of cb. return.

No CHARGE FOR CONNECTIONS  
*L. Curtis 11-16-56*

# BELLFLOWER BLDG. DIST. NO. 4

- NOTES**
- PROVIDE STAKES ON THE PROPERTY LINE OR PROPERTY LINES PRODUCED AT RIGHT ANGLES TO THE SEWER LINE AT THE CENTER LINE OF EACH MANHOLE.
  - NO REPRESENTATIVE OF THE COUNTY ENGINEER WILL SURVEY OR LAY OUT ANY PORTION OF THE WORK.
  - THE OWNER OR HIS AUTHORIZED REPRESENTATIVE SHALL FURNISH THE COUNTY ENGINEER WITH GRADE SHEETS AND STATION FOR ALL HOUSE LATERALS AND HOUSE LATERALS AND SHALL PROVIDE STAKES FOR THEM AT THEIR PROPER LOCATIONS WITH STATIONING PLAINLY MARKED. ANY CHANGE IN LOCATION SHALL BE REQUESTED BY WRITING BY THE OWNER OR HIS REPRESENTATIVE.
  - NO DIVERSIONS SHALL BE MADE IN THESE PLANS WITHOUT THE APPROVAL OF THE COUNTY ENGINEER.
  - USE STANDARD MANHOLE FRAMES AND COVERS, S.A.-117, EXCEPT AS NOTED.
  - USE STANDARD STRENGTH PIPE EXCEPT AS NOTED.
  - USE JOINT COMPOUND PER SPECS. S.F.C. 68 FOR ALL VITRIFIED CLAY PIPE JOINTS.
  - RESURFACE ALL TRENCH WITHIN PAVED AREA TO MEET L.A. COUNTY ROAD DEPT., OR CALIF. STATE HIGHWAY DEPT. SPECIFICATIONS IN ACCORDANCE WITH PERMITS.
  - ENCASE FOUR FEET OF SEWER AT POINTS OF INTERFERENCE WITH POLES, S.A.-119.
  - HOUSE LATERALS TO BE CONSTRUCTED WITH INVERTS AT PROPERTY LINE... FEET BELOW CURB GRADE EXCEPT AS NOTED.
  - ALL STRUCTURES SHALL BE BENCH SEWER STRUCTURES, S.A.-184, EXCEPT AS NOTED.
  - FOR ALLOWAY'S LEAKAGE TEST USE FORMULA NO. 2 SPECS. S.F.C. 54.
  - MANHOLE TOPS IN UNIMPROVED SEWER OF WAY TO BE 6" ABOVE FINISHED GRADE.
  - The Private Engineer is to furnish the House Lateral depth at the Property Line, below the elevation of the connection of the Sewer Right of Way for each House Lateral on the Grade Sheet.

PROFILE ALIGNMENT AND GRADE OF **P.C. 4197**  
**SANITARY SEWERS** PAGE **1**  
 TO BE CONSTRUCTED IN

TRACT N<sup>o</sup> 21081 (26,153)

PRIVATE CONTRACT NO. 4197

W.S. 33

2 SHEETS, 3 PAGES

SCALE: VERT. 1" = 4' HORIZ. 1" = 10'

OCT. 1956

PREPARED IN THE OFFICES OF

**MANNING & DETILLA**

By *J. L. Manning*  
 REG. C. E. NO. 7674

FOR LEGEND SEE PLAN NO. S A-64

**NOTES**

GRADES TO WHICH THIS IMPROVEMENT IS TO BE CONSTRUCTED ARE SHOWN ON PLANS AND PROFILE GRADE POINTS FOR TOP OF CURB, CENTER LINE OF STREET, OR CENTER LINE OF ALLEYS ARE SHOWN BY CIRCLES ON PROFILES AT ALL POINTS BETWEEN DESIGNATED POINTS THE GRADE SHALL BE ESTABLISHED SO AS TO CONFORM TO A STRAIGHT LINE DRAWN BETWEEN SAID DESIGNATED POINTS.

ELEVATIONS ARE ON 1947 ABOVE M.S.C. 16.5 SEA LEVEL, UNLESS OTHERWISE SPECIFIED.

THE DRAWING AND THE DATA HEREON ARE HEREBY MADE A PART OF THE SPECIFICATIONS.

WORK SHALL BE CONSTRUCTED ACCORDING TO SPECIFICATIONS ON FILE IN THE OFFICE OF THE COUNTY ENGINEER AND SHALL BE PROSECUTED ONLY IN THE PRESENCE OF THE COUNTY ENGINEER.

BEFORE WORK CAN BE STARTED, THE CONTRACTOR MUST OBTAIN A PERMIT TO EXCAVATE IN COUNTY STREETS FROM THE L.A. COUNTY ROAD DEPT., THE W.P. DEPT. AND MAKE A DEPOSIT WITH THE COUNTY ENGINEER, FROM THE SAN ANTONIO BANK, 330 SO. BROADWAY, SUFFICIENT TO COVER THE COST OF CONSTRUCTION INSPECTION AND RECORD PLANS.

APPROVAL OF THIS PLAN BY THE COUNTY OF LOS ANGELES DOES NOT CONSTITUTE A REPRESENTATION AS TO THE ACCURACY OF THE LOCATION OF OR THE EXISTENCE OR NON-EXISTENCE OF ANY UNDERGROUND UTILITY PIPE, OR STRUCTURE WITHIN THE LIMITS OF THIS PROJECT. THIS NOTE APPLIES TO ALL PAGES.

IF WORK IS TO BE DONE IN A STATE HIGHWAY, A PERMIT MUST BE OBTAINED FROM THE STATE OF CALIFORNIA, DIVISION OF HIGHWAYS, 120 SOUTH SPRING STREET.

COUNTY OF LOS ANGELES, CALIFORNIA

APPROVED, JOHN A. LAMME, COUNTY ENGINEER

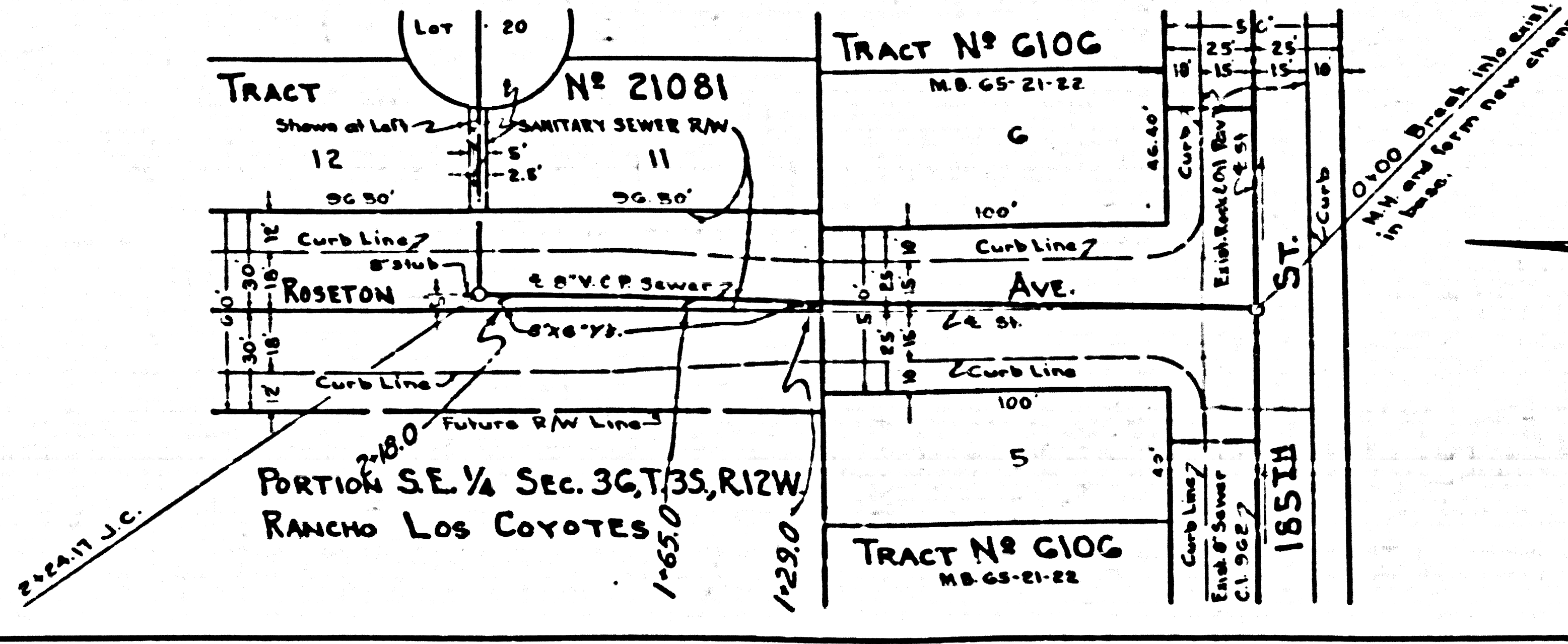
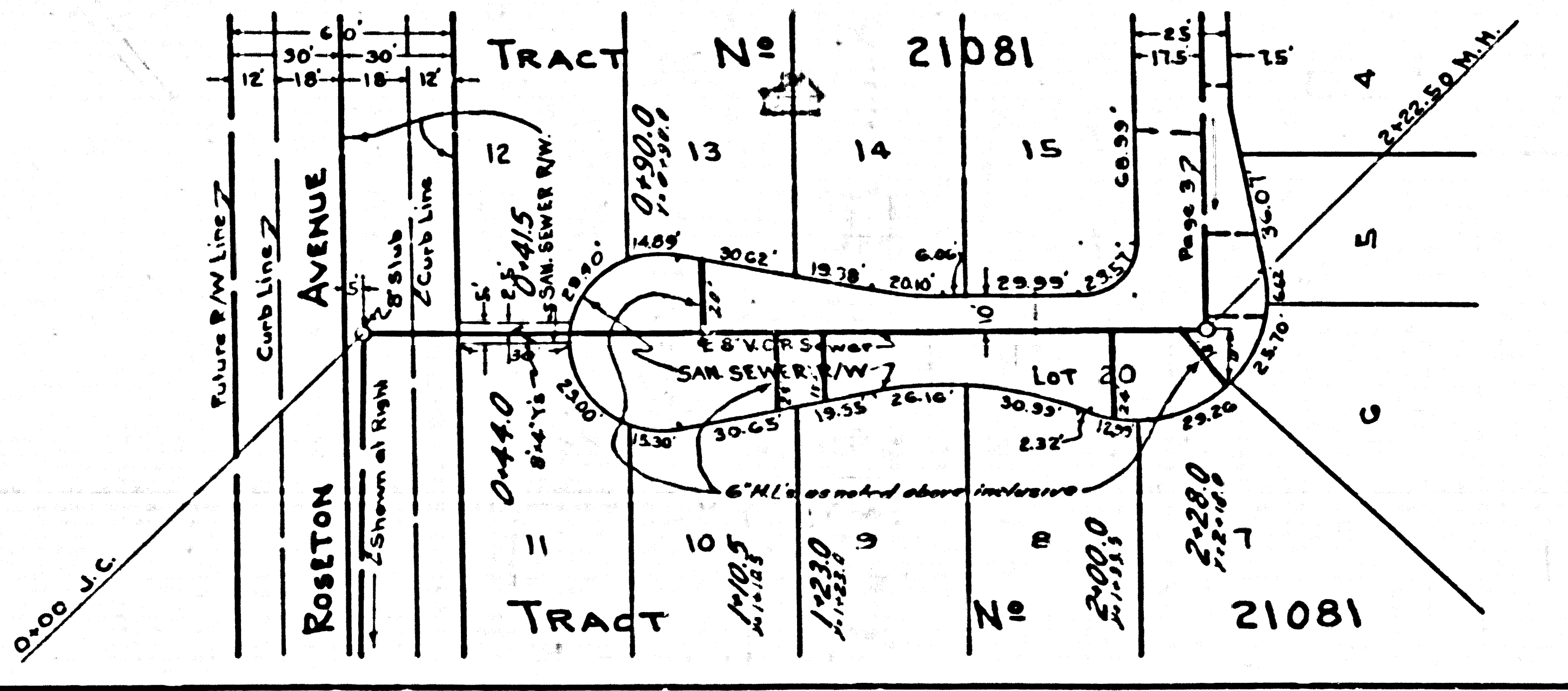
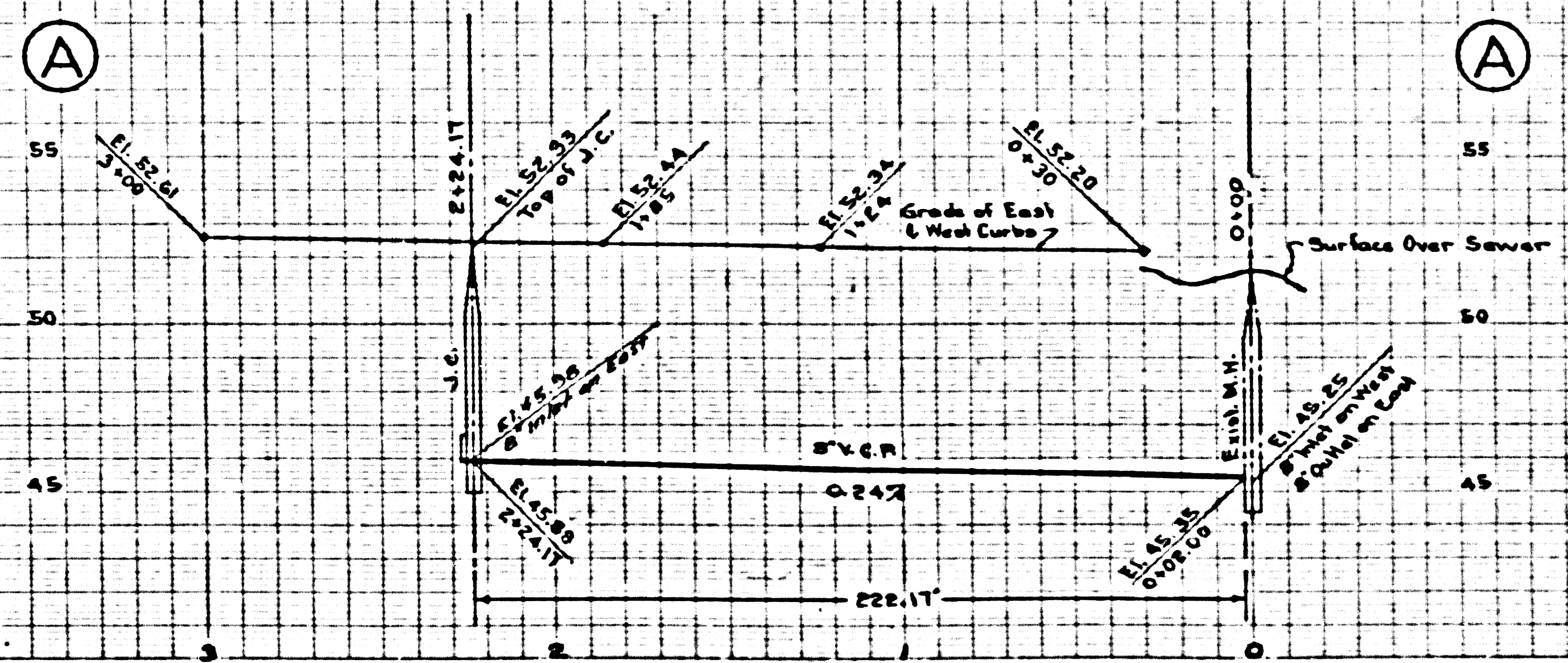
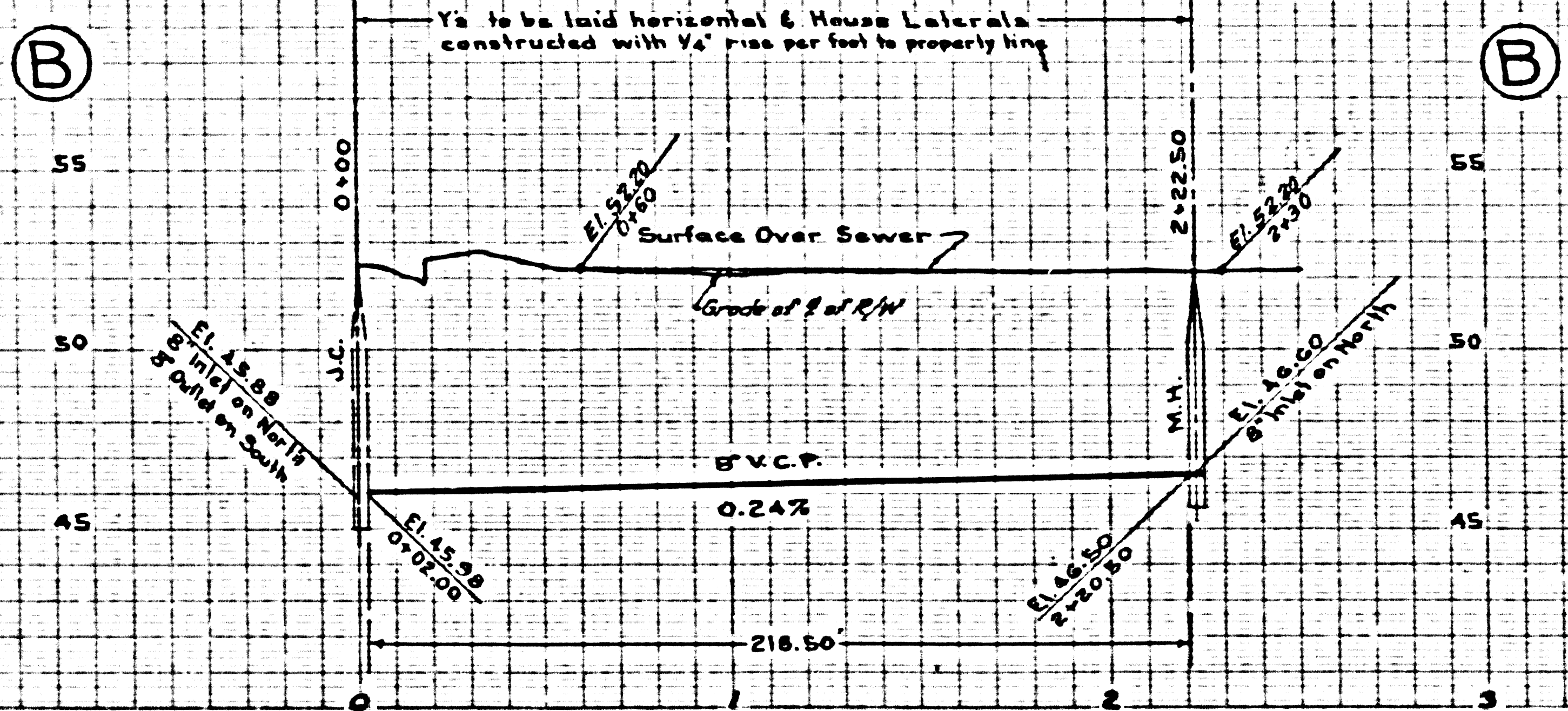
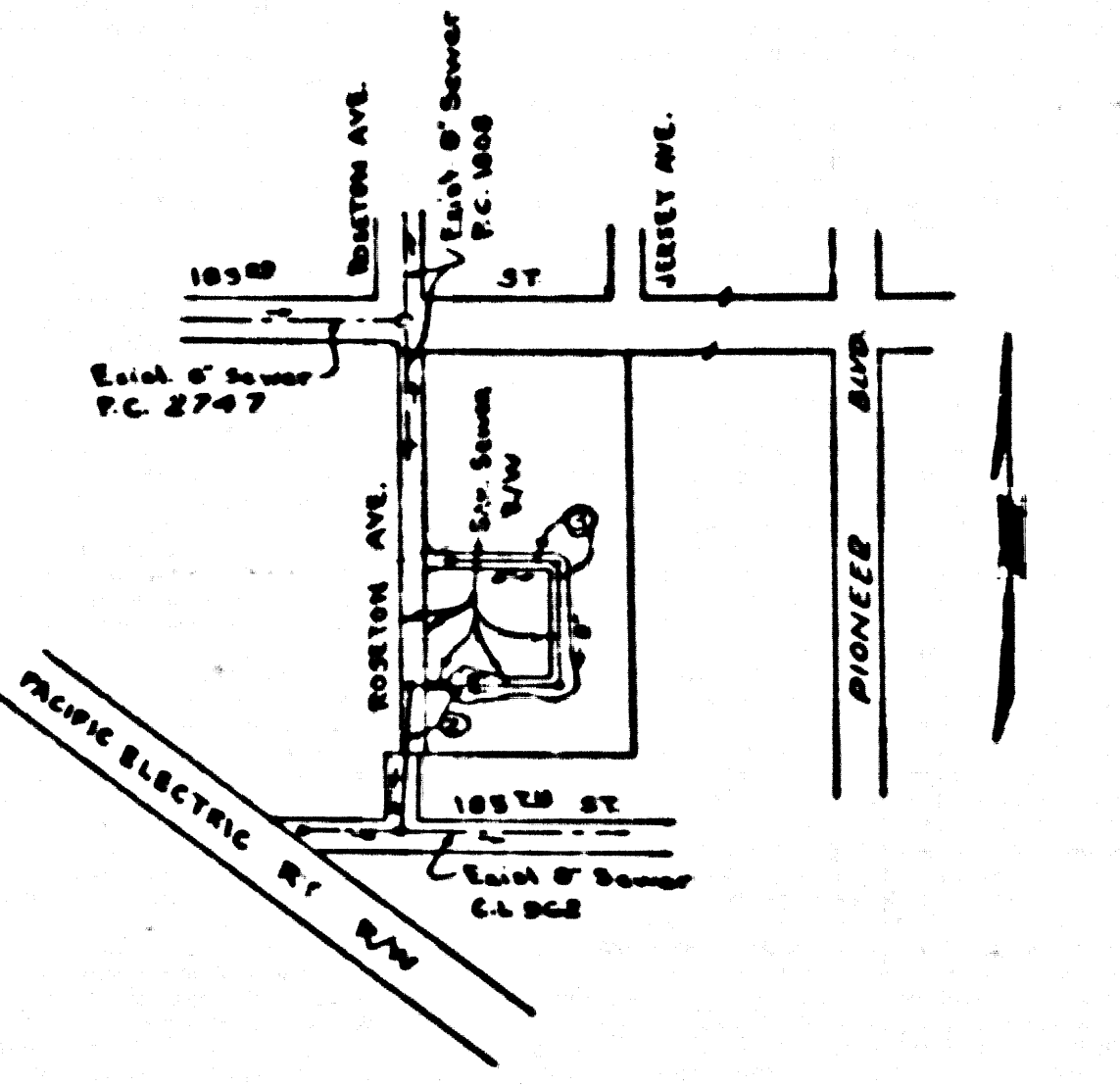
APPROVED, A. M. RAWN, CHIEF ENGINEER

By *A. P. Collins* SANITATION ENGINEER

By *H. Posthumus* OFFICE ENGINEER

CHECKED BY *P. P. Johnson* 11-16-56

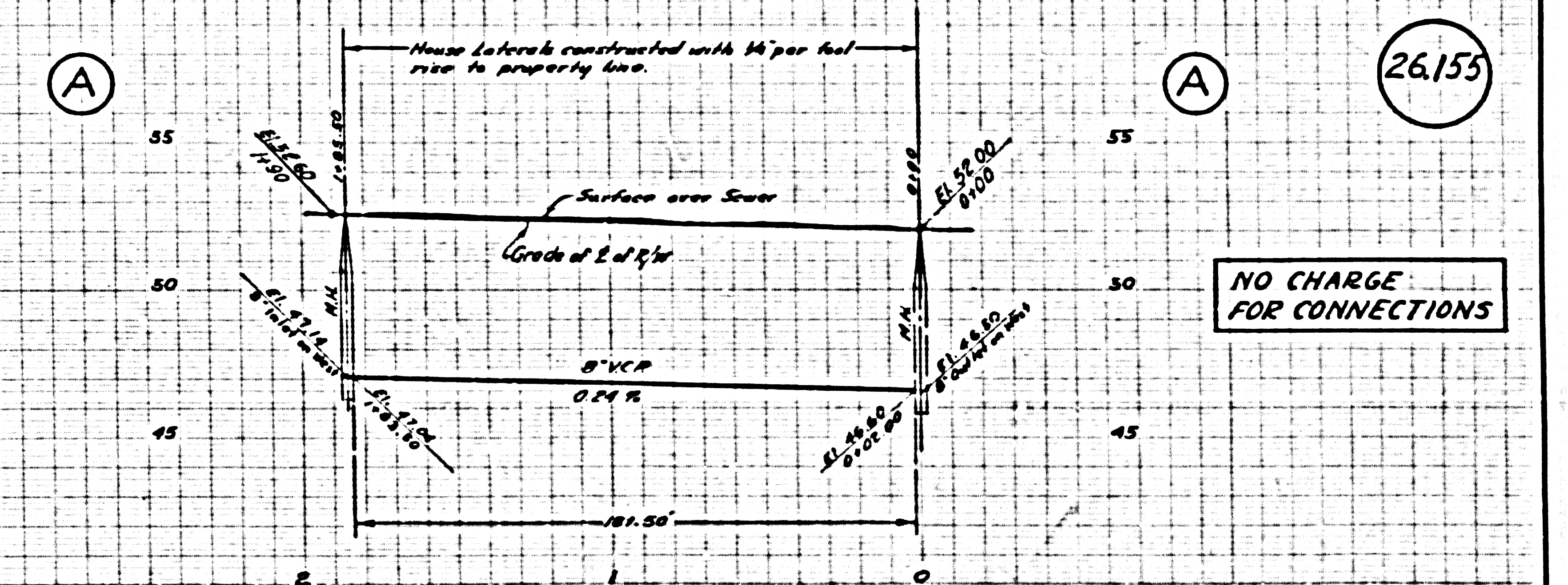
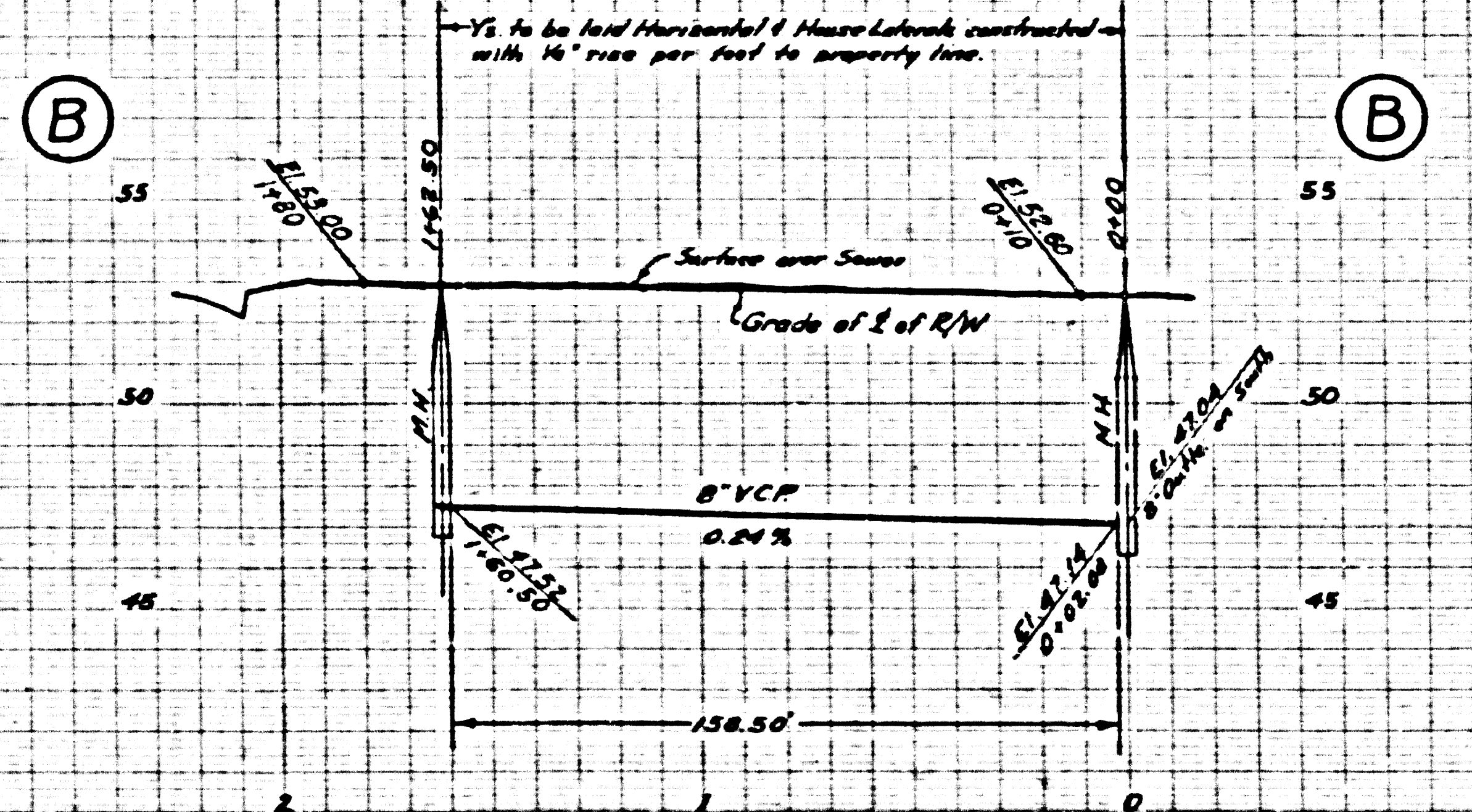
OFFICE OF COUNTY ENGINEER, REG. C. E. NO. 7860



P.C. 4197 PAGE 2

No CHARGE FOR CONNECTIONS

(26,154)



NO CHARGE FOR CONNECTIONS

26.155

