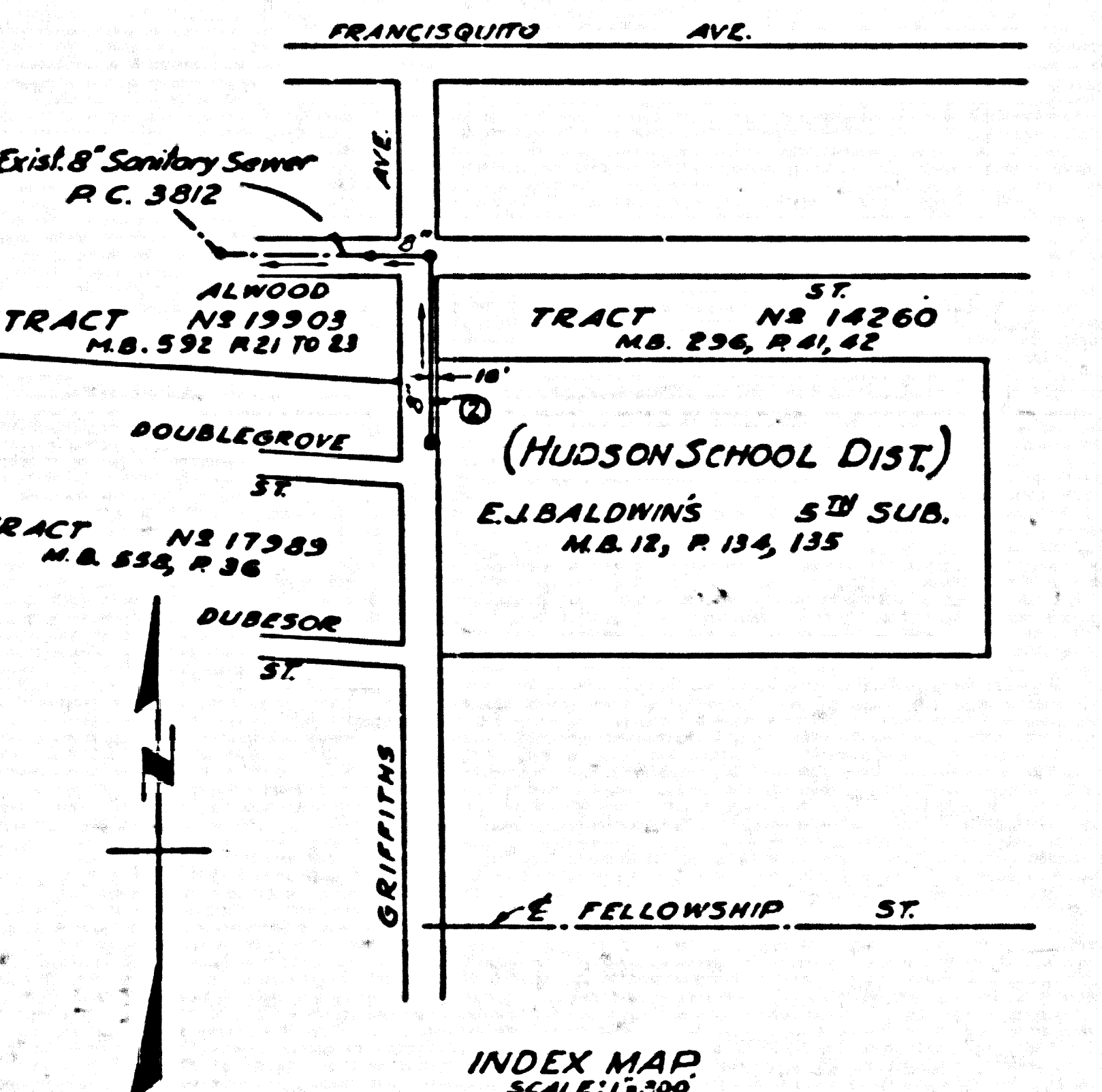


B.M. L.A. Co. S.G. 401, Elev. 356.443
Lead & Tack 2' East of Curb Return of
S.E. Cor. of Griffiths Ave. & Francisquito Ave.



INDEX MAP
SCALE: 1"=200'
P.C. 4198

checked 1-9-57 *W. Warren*

PUENTE BLDG. DIST. No 2

- NOTE:**
Provide stakes on the property lines or property lines produced at right angles to the sewer line at the center line of each manhole.
No representative of the County Engineer will survey or layout any portion of the work.
The owner or his authorized representative shall furnish the County Engineer with grade sheets and stations for all house laterals and Y branches and shall provide stakes for them at their proper locations with stationing plainly marked. Any change in location shall be requested in writing by the owner or his representative.
No revisions shall be made in these plans without the approval of the County Engineer.
1. Use standard manhole frames and covers, S-a-117, Except as noted.
 2. Use standard strength pipe.
 3. Use cement mortar for all vitrified clay pipe joints.
 4. Resurface all trench within paved area to meet L. A. County Road Dept. or California State Highway Dept. requirements in accordance with permit.
 5. Encase four feet of sewer at points of interference with poles, S-a-119.
 6. House laterals to be constructed with inverts at property line _____ feet below curb grade _____
 7. All structures shall be brick sewer structures, S-a-104, Except as noted.
 8. For allowable leakage test, use Formula No. _____ Spc's, Sec. 54.
- Manhole tops in unimproved Rights-Of-Way to be 6" above finish grade.

NOTE TO CONTRACTOR: The Contractor must make a Reimbursement payment in the total amount of \$ 530.50 to the County Engineer, John A. Lambie, by certified check, before issuance of construction permit.

SHEETS	PAGES
1	2

NOTE: THIS IS A TEMPORARY SEWER TO SERVE THE HUDSON SCHOOL DISTRICT ONLY. ALLOW NO OTHER CONNECTIONS UNLESS APPROVED BY MAIN OFFICE

Trim Line

Trim Line

PROFILE, ALIGNMENT AND GRADE OF
SANITARY SEWERS
TO BE CONSTRUCTED IN
GRIFFITHS AVENUE
AND
ALWOOD STREET

PRIVATE CONTRACT NO. 4198
W. S. 38
2 SHEETS ~~2 SHEETS~~ 2 PAGES
Scale: VERT. 1"=4'
HORIZ. 1"=40' OCTOBER 1956
PREPARED IN THE OFFICES OF
KISTNER, WRIGHT & WRIGHT
Henry Gordon Cowley Reg. C. E. No. 6617
FOR LEGEND SEE PLAN NO. S-a-64

NOTE:
Grades to which this improvement is to be constructed are shown on plans and profiles. Grade points for top of curbs, center line of streets, or center line of alleys are shown by circles on profiles. At all points between designated points the grade shall be established so as to conform to a straight line drawn between said designated points.
Elevations are in feet above U.S.C. & G.S. Sea Level Datum of 1929.
This drawing and the data hereon are hereby made a part of the specifications.
Work shall be constructed according to specifications on file in the office of the County Engineer and shall be prosecuted only in the presence of the County Engineer.
Before work can be started, the contractor must obtain a permit to encroach in County streets from the L.A. County Road Dept., 108 W. 2nd St. and make a deposit with the County Engineer, Room 324, 253 South Broadway, sufficient to cover the cost of construction inspection and record plans.
Approval of this plan by the County of Los Angeles does not constitute a representation as to the accuracy of the location of or the existence or non-existence of any underground utility, pipe, or structure within the limits of this project. This note applies to all sheets.
If work is to be done in a State Highway, a permit must be obtained from the State of California, Division of Highways, 120 South Spring Street.

COUNTY OF LOS ANGELES, CALIFORNIA
Approved, John A. Lambie County Engineer
Approved, A. M. Rawns
CHIEF ENGR. DIST. NO. 12
BY *A. P. Collins* Sanitation Engineer BY *J. P. Matthews* Office Engineer
Checked by *R. K. ...* 11-8-56
Office of County Engineer, Reg. C. E. No. 7860

P.C. 4198
PAGE 1

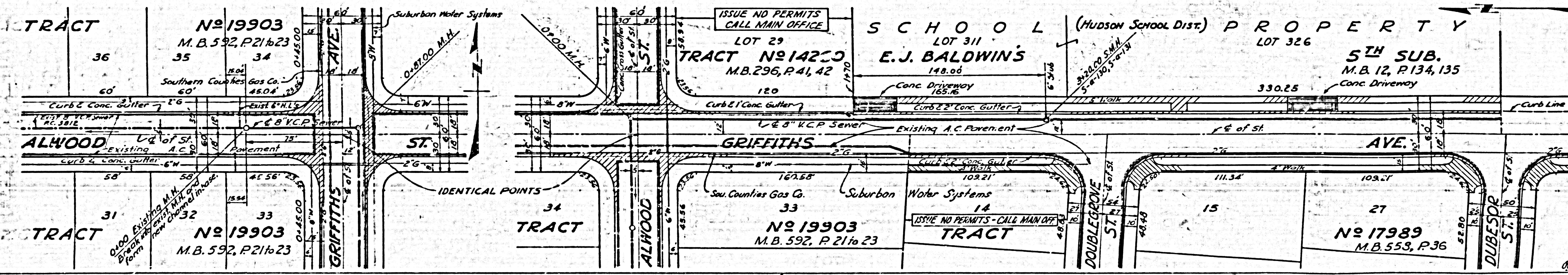
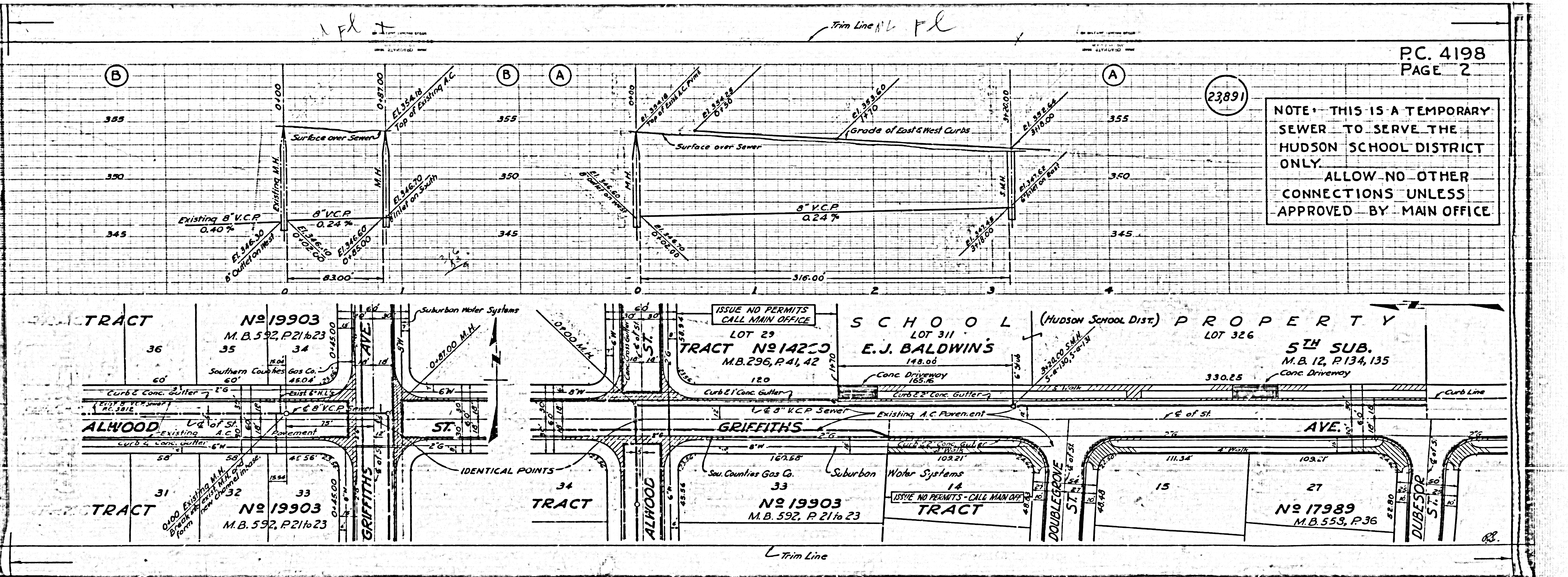
23,890
(2)

D. 11010

71.77

23891

NOTE: THIS IS A TEMPORARY
SEWER TO SERVE THE
HUDSON SCHOOL DISTRICT
ONLY.
ALLOW NO OTHER
CONNECTIONS UNLESS
APPROVED BY MAIN OFFICE.



Trim Line