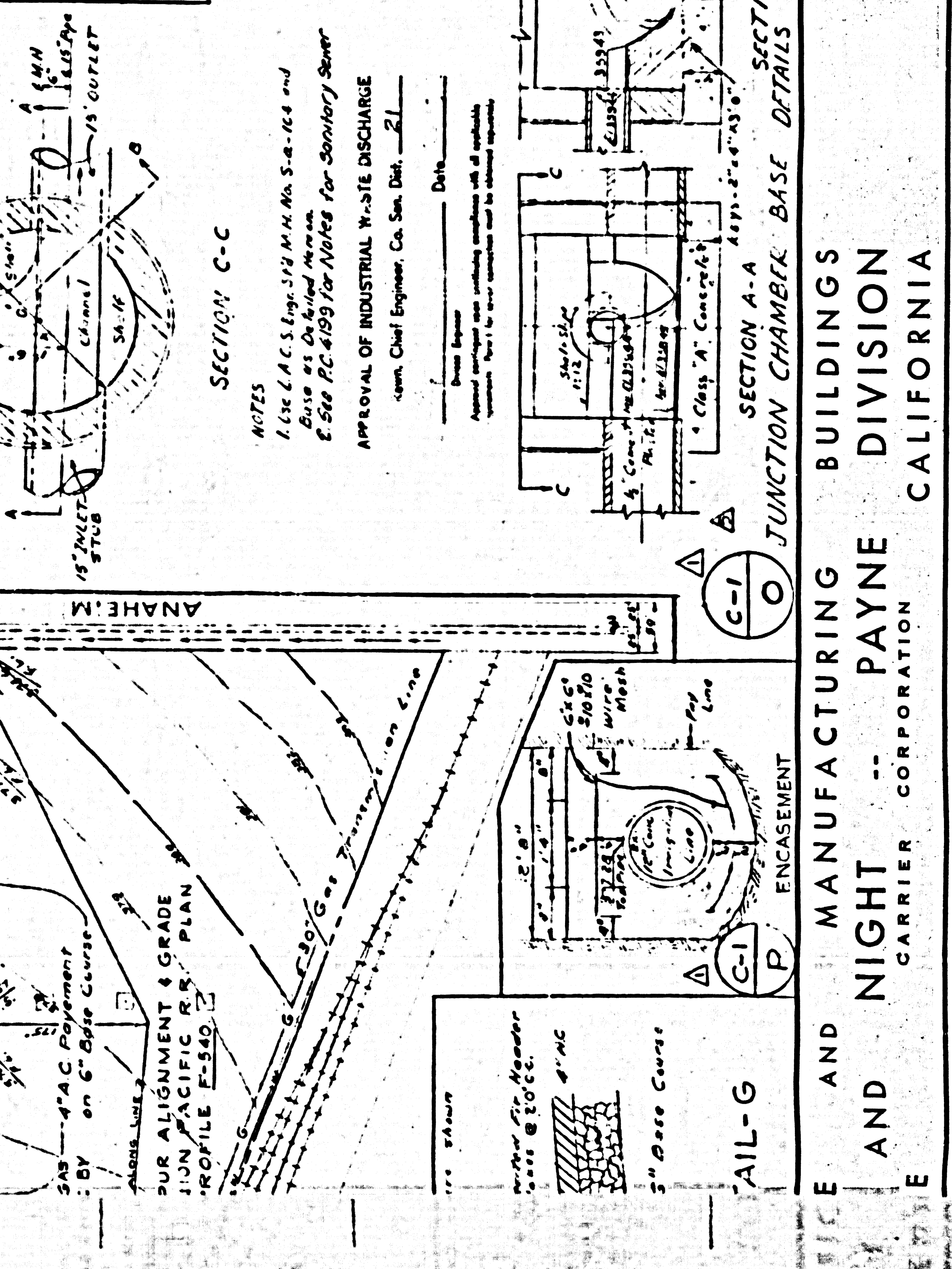
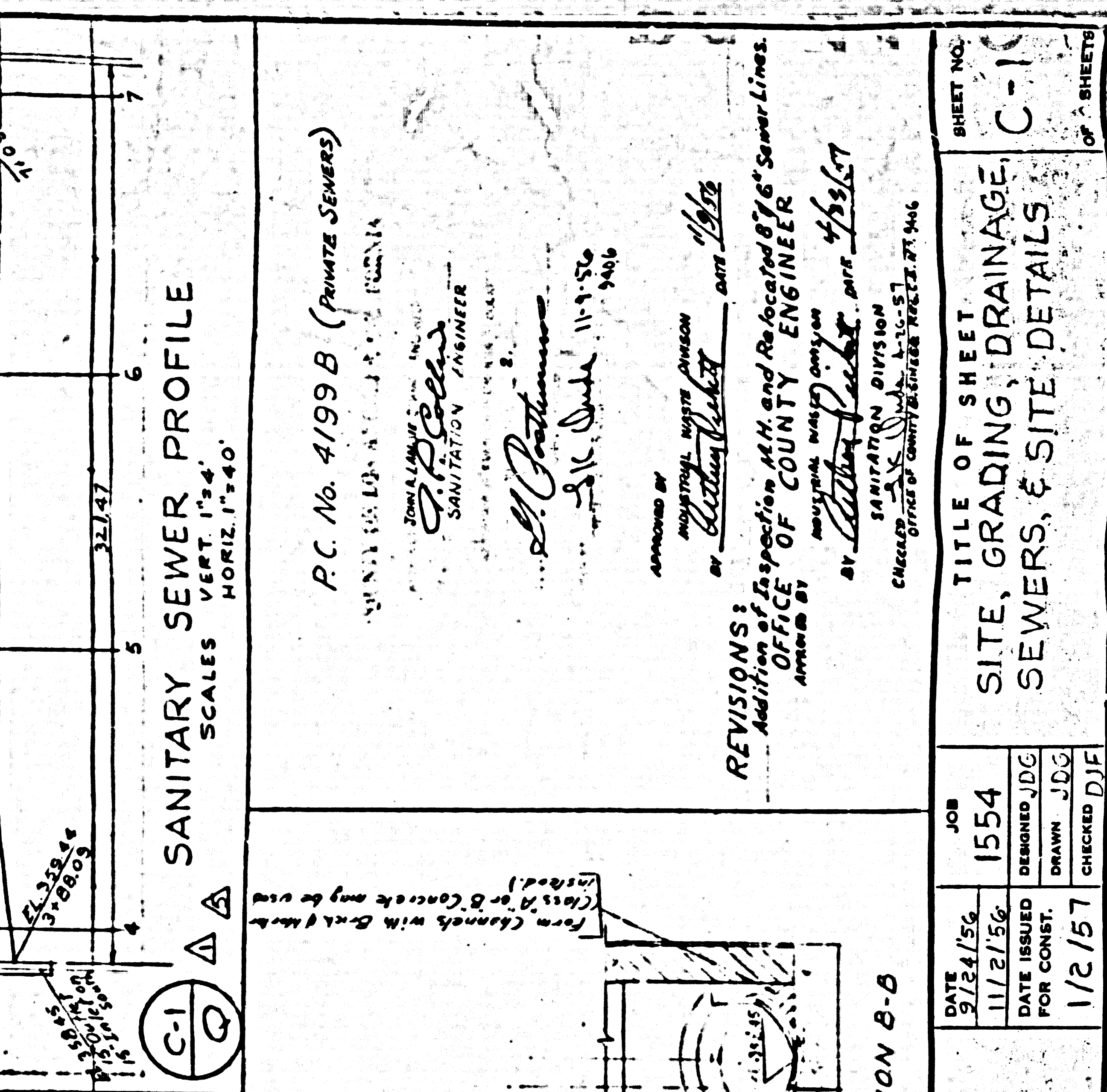
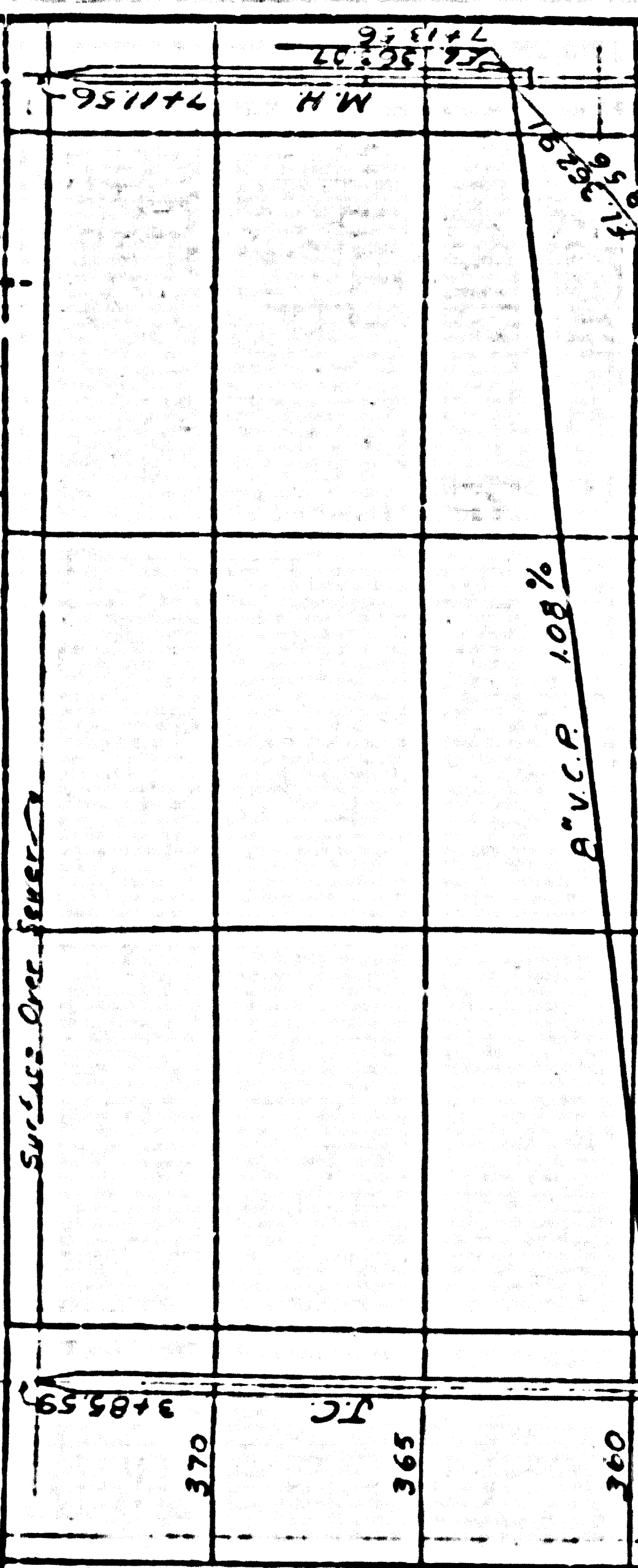
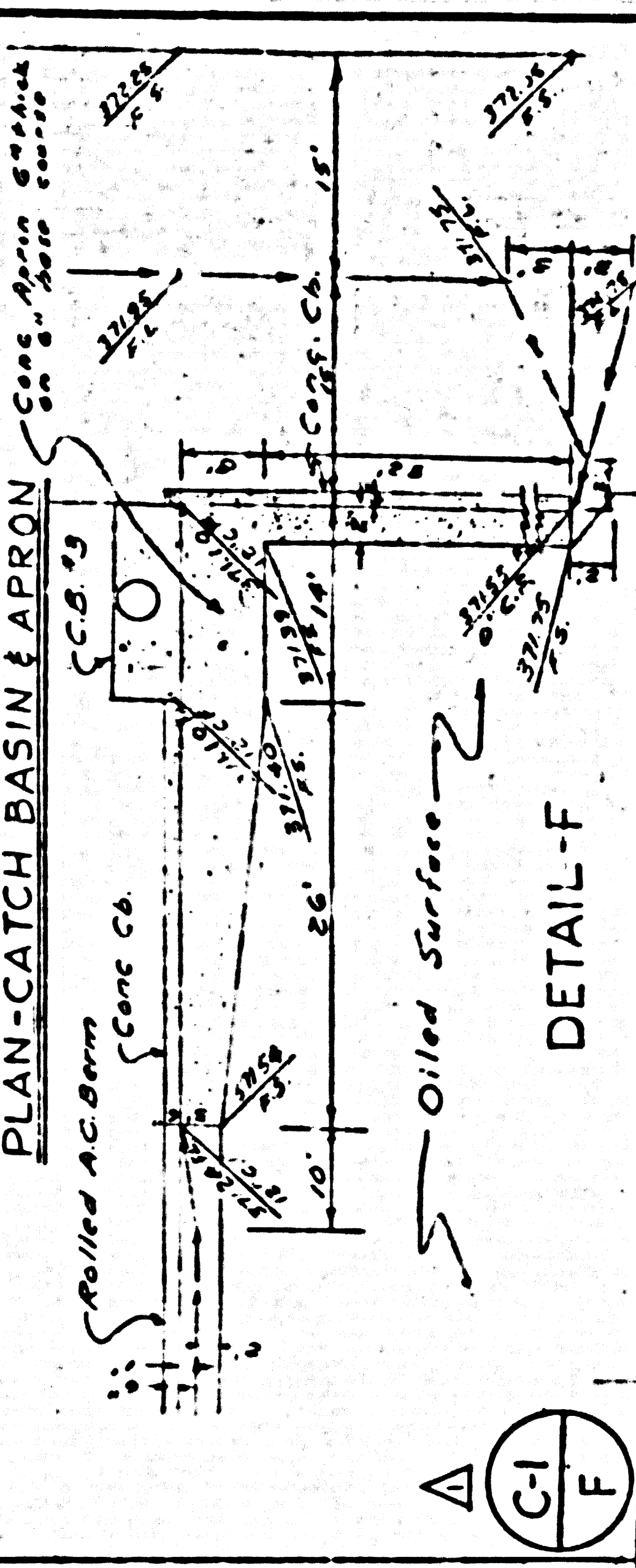
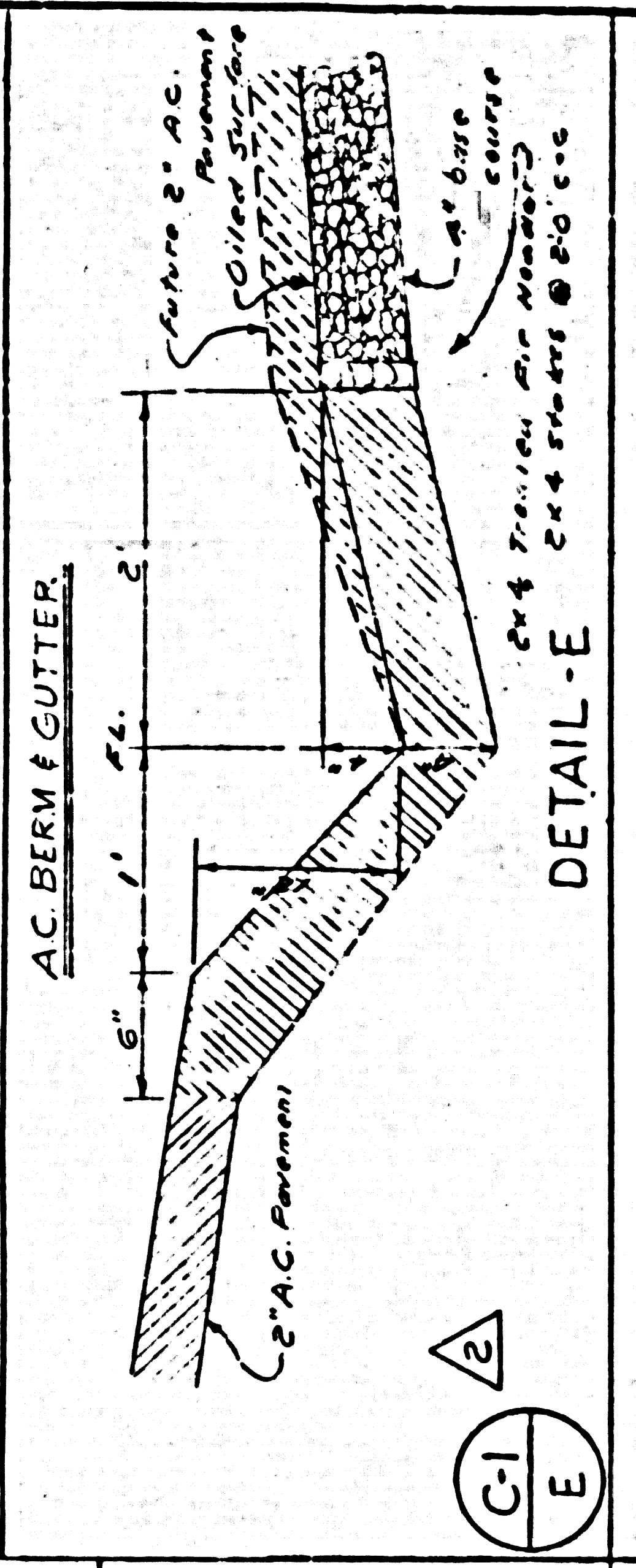
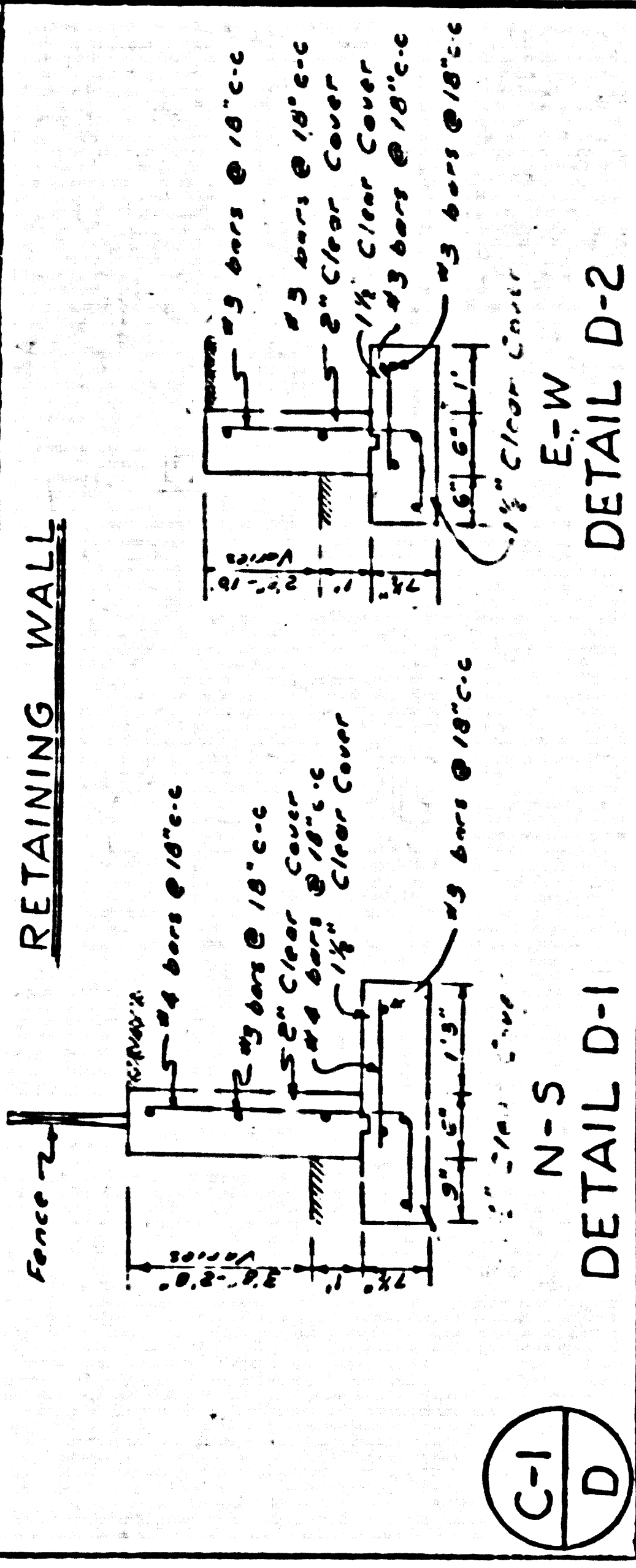
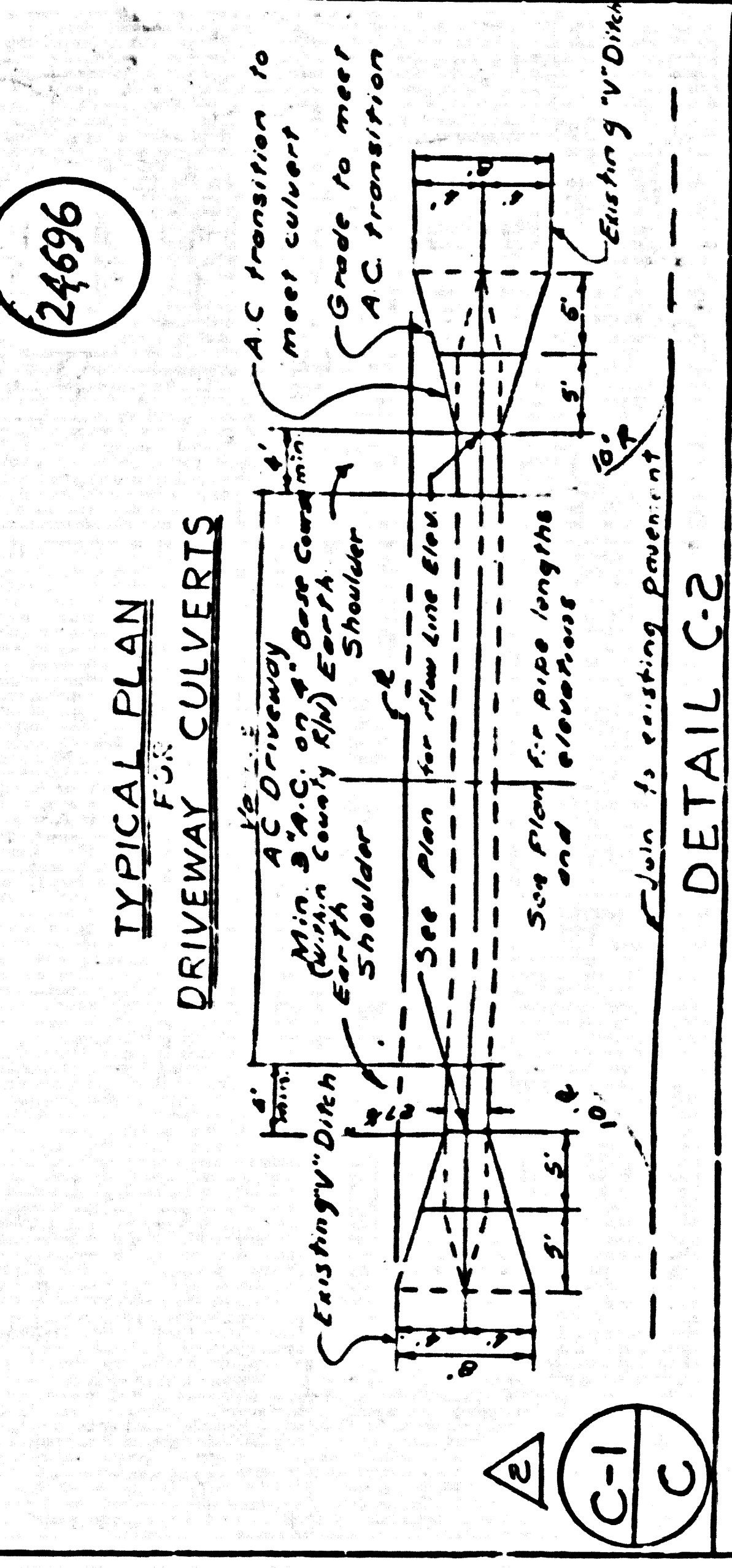
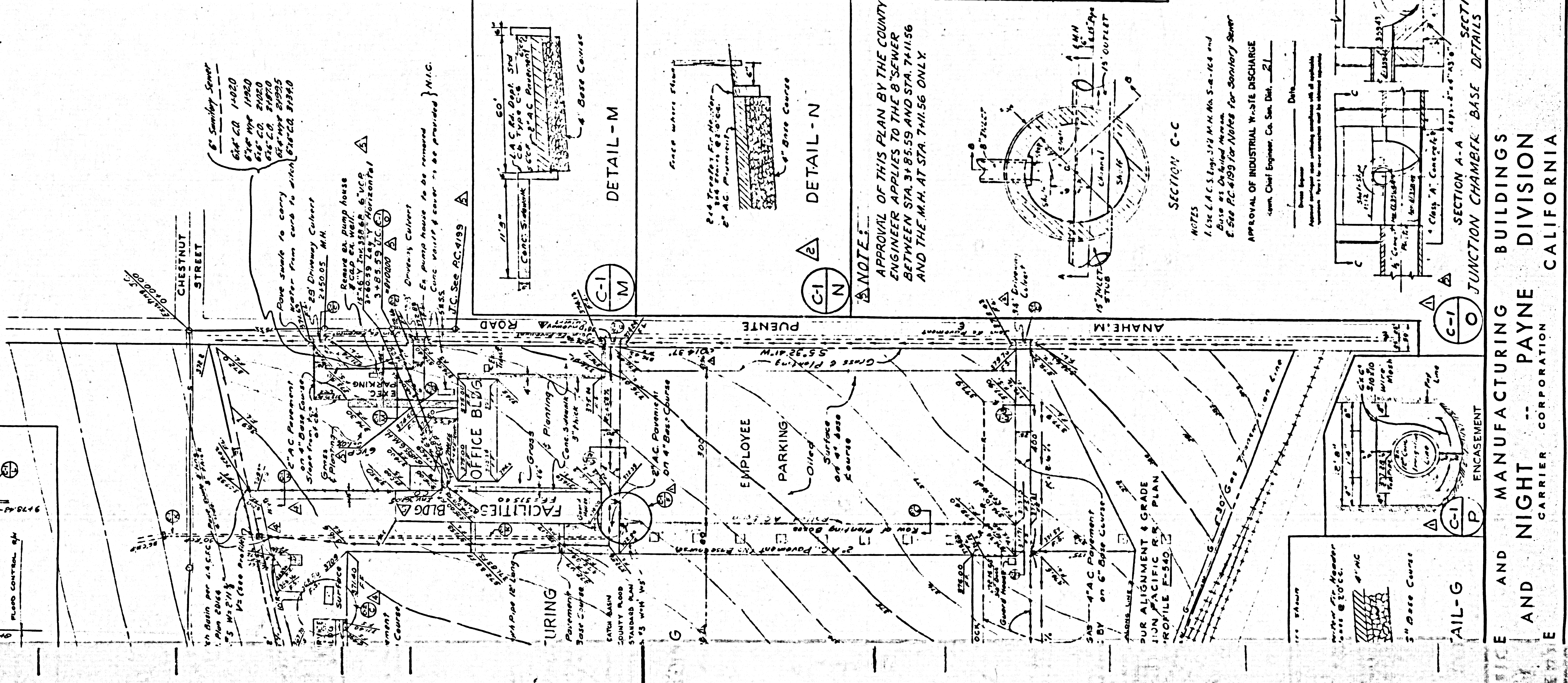
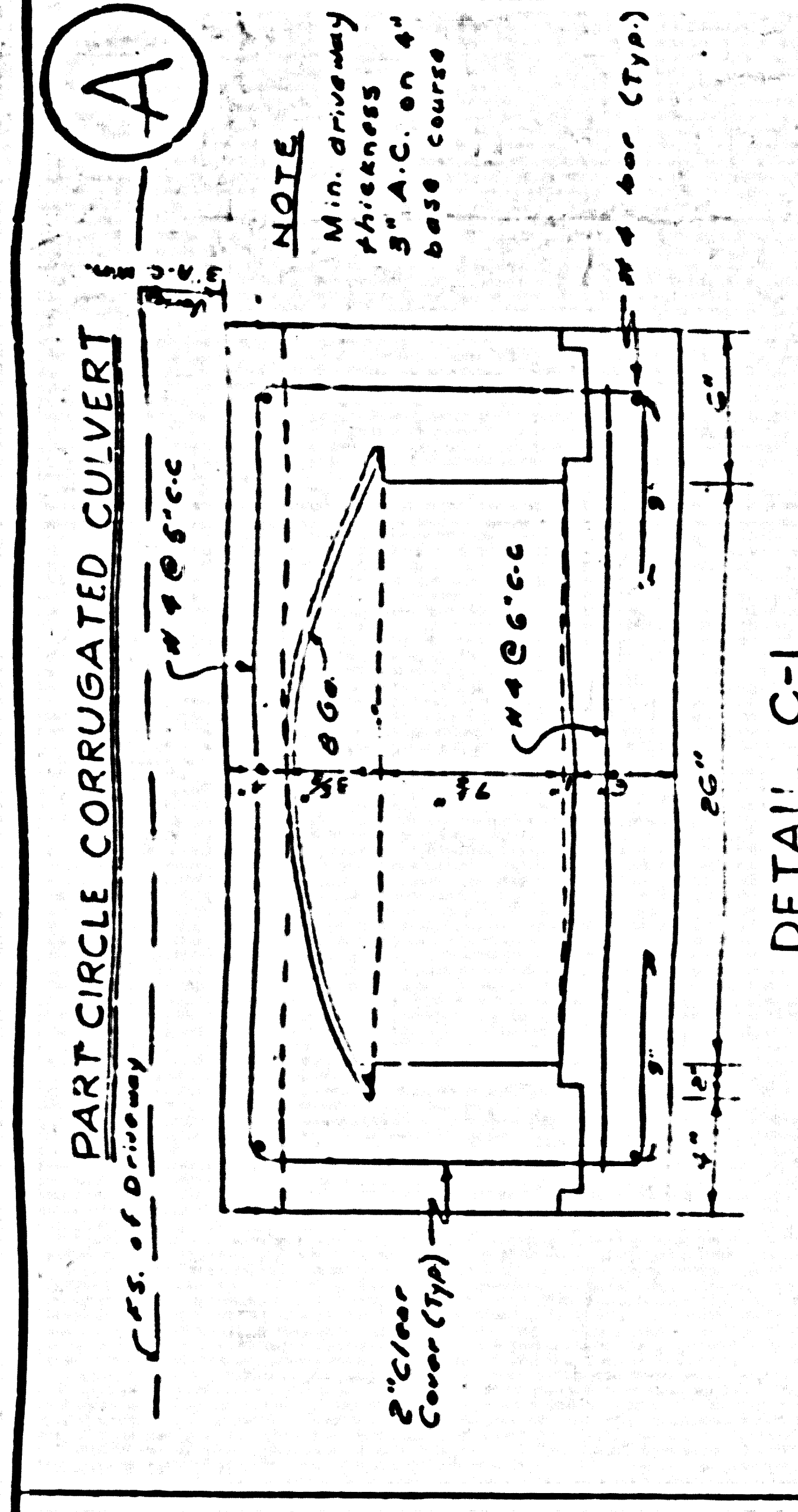
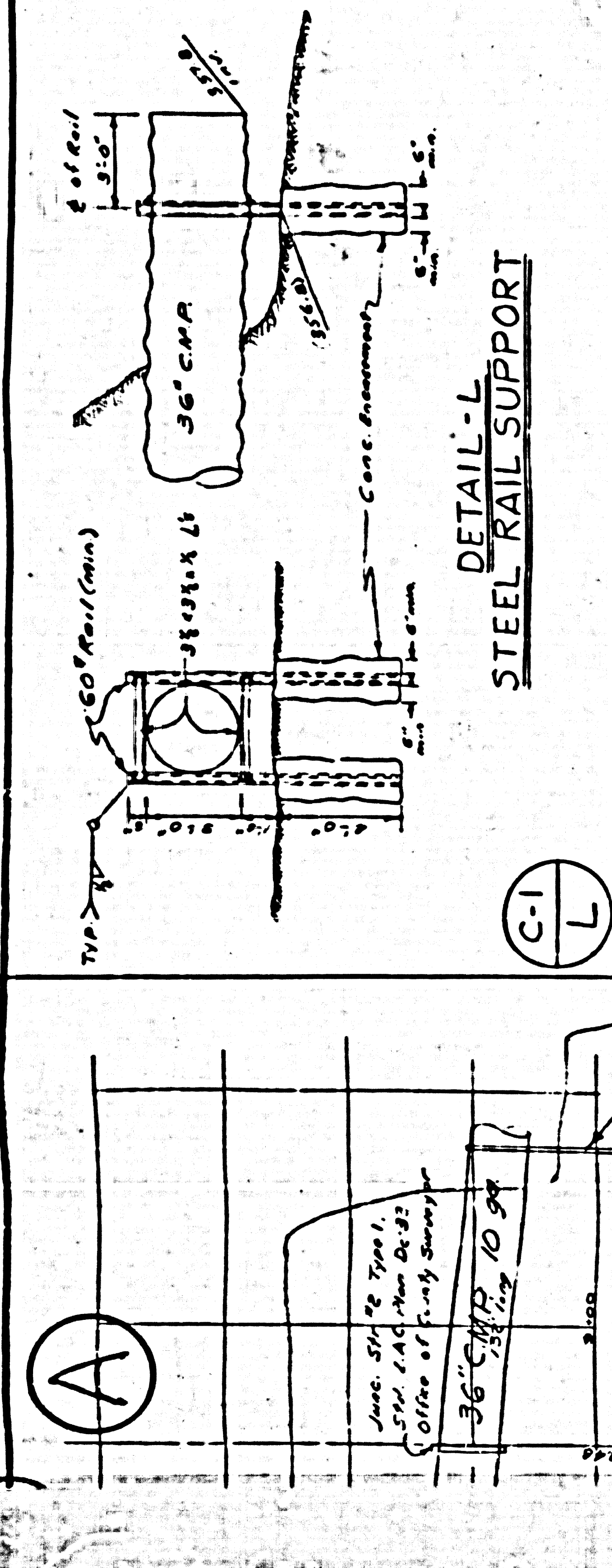


P.C. 4199-B



NOTES
 APPROVAL OF THIS PLAN BY THE COUNTY ENGINEER APPLIES TO THE 8" SEWER BETWEEN STA. 3+85.55 AND STA. 7+11.56 AND THE M.H. AT STA. 7+11.56 ONLY

NOTES
 1. SEE L.A.C.S. Eng. 518 M.H. No. S-6-108 and Base as Detailed Herein
 2. SEE P.C. 4199 FOR NOTES FOR SANITARY SEWER
 APPROVAL OF INDUSTRIAL WASTE DISCHARGE

 Chief Engineer, Co. San. Dist. 21

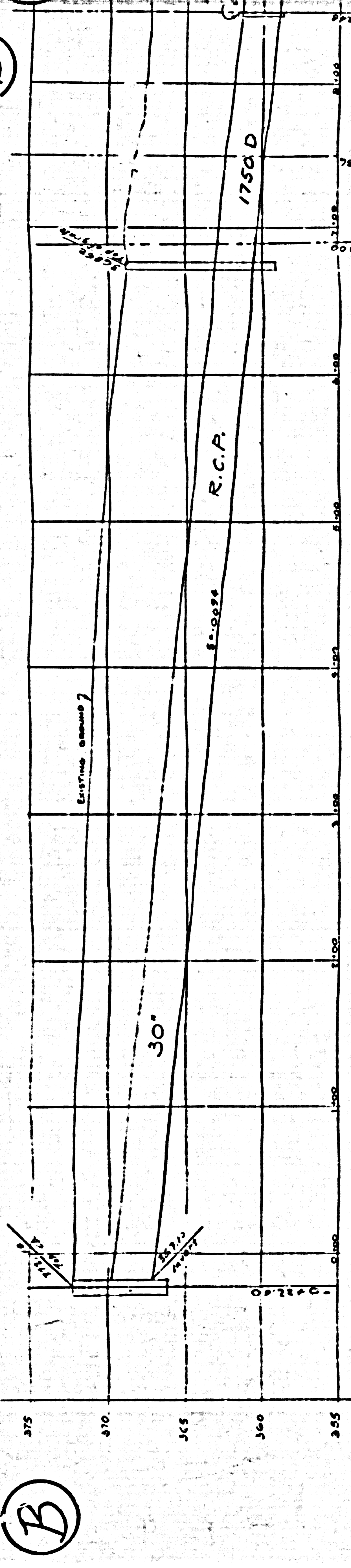
REVISIONS:
 Addition of Inspection M.H. and Receptor 8" 6" Sewer Lines.
 OFFICE OF COUNTY ENGINEER
 APPROVED BY

 SANITATION DIVISION
 OFFICE OF COUNTY ENGINEER, P.C. No. 4199-B

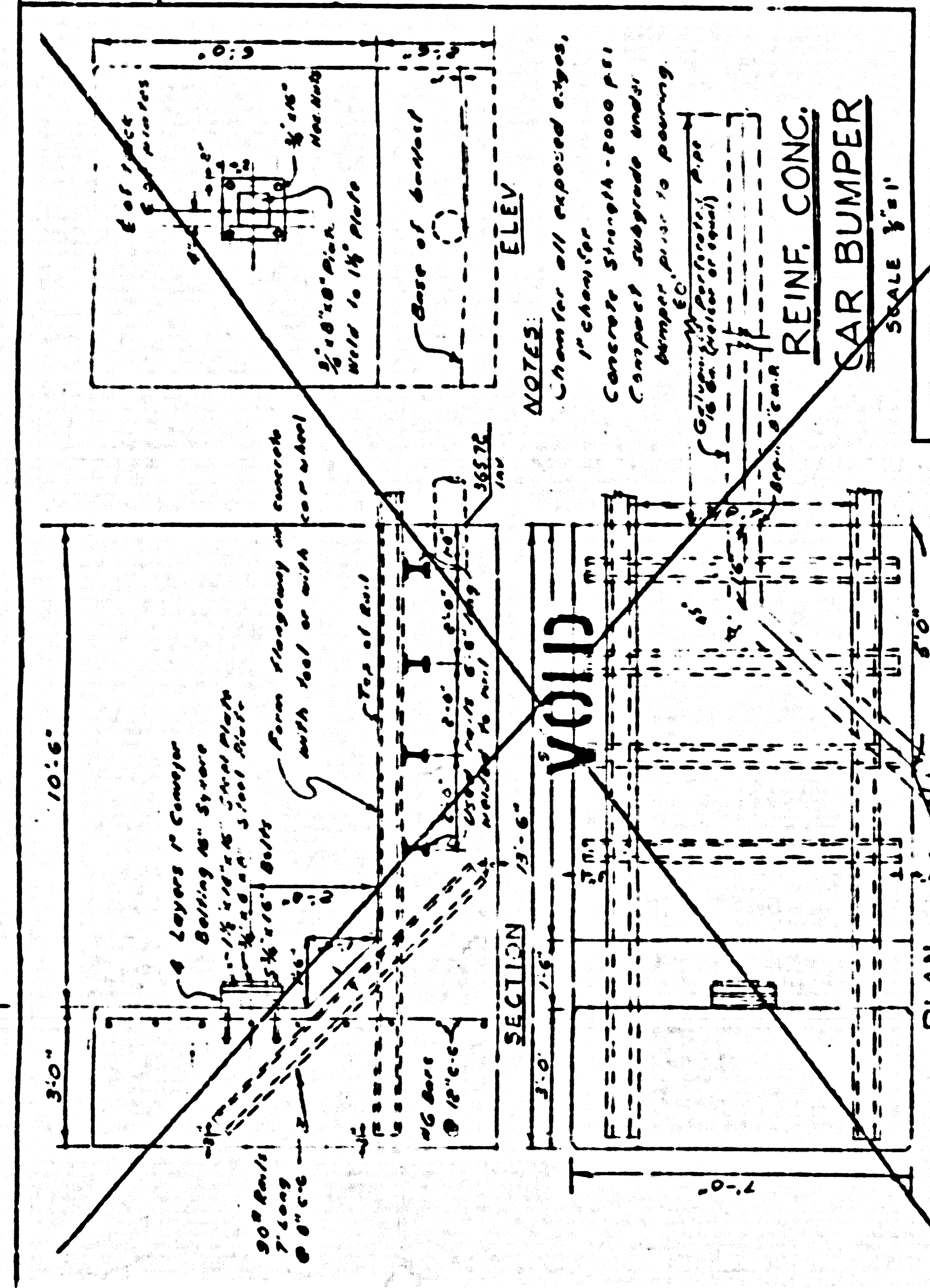
PC. 4199-B

(B)

(B)



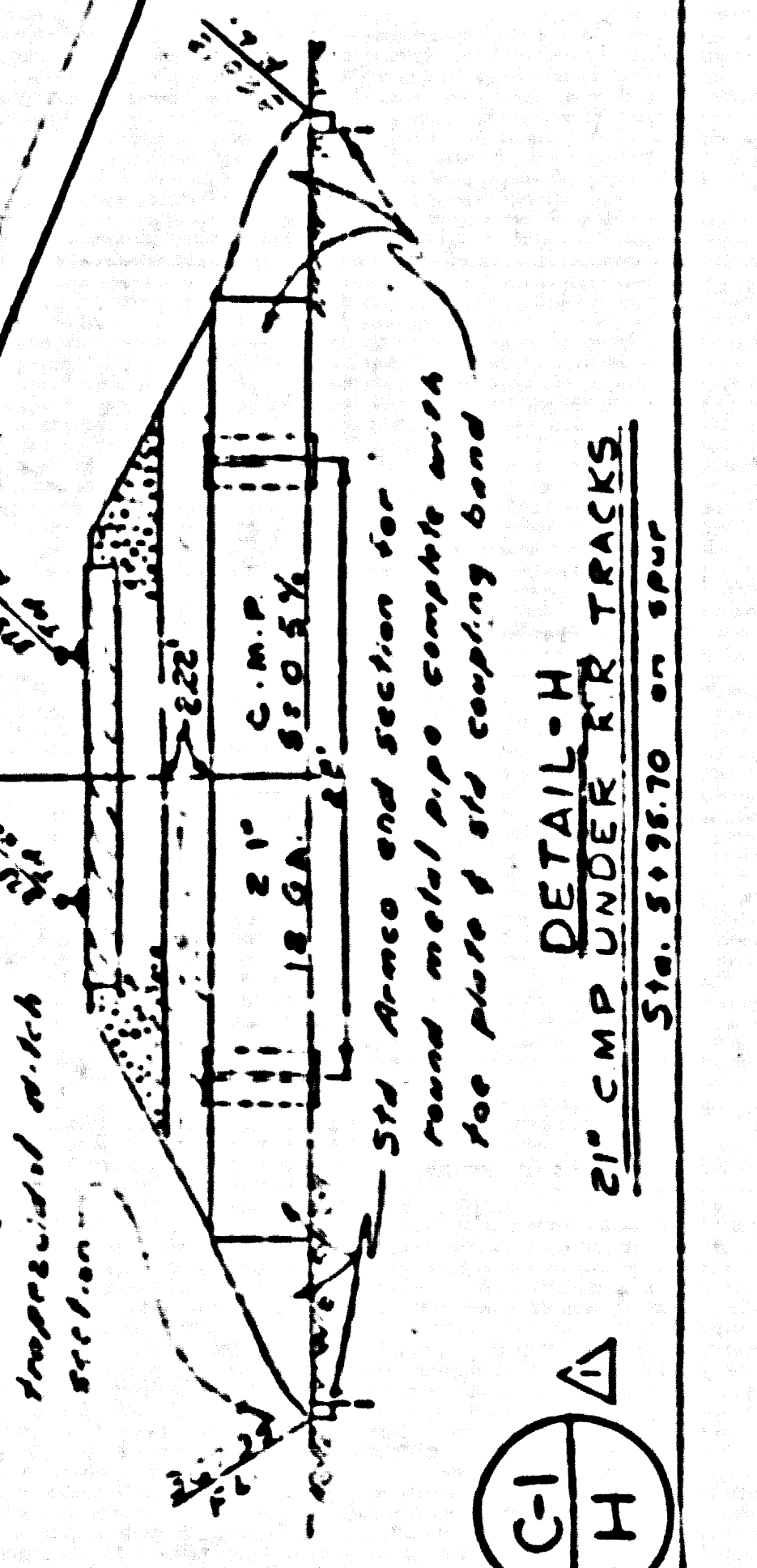
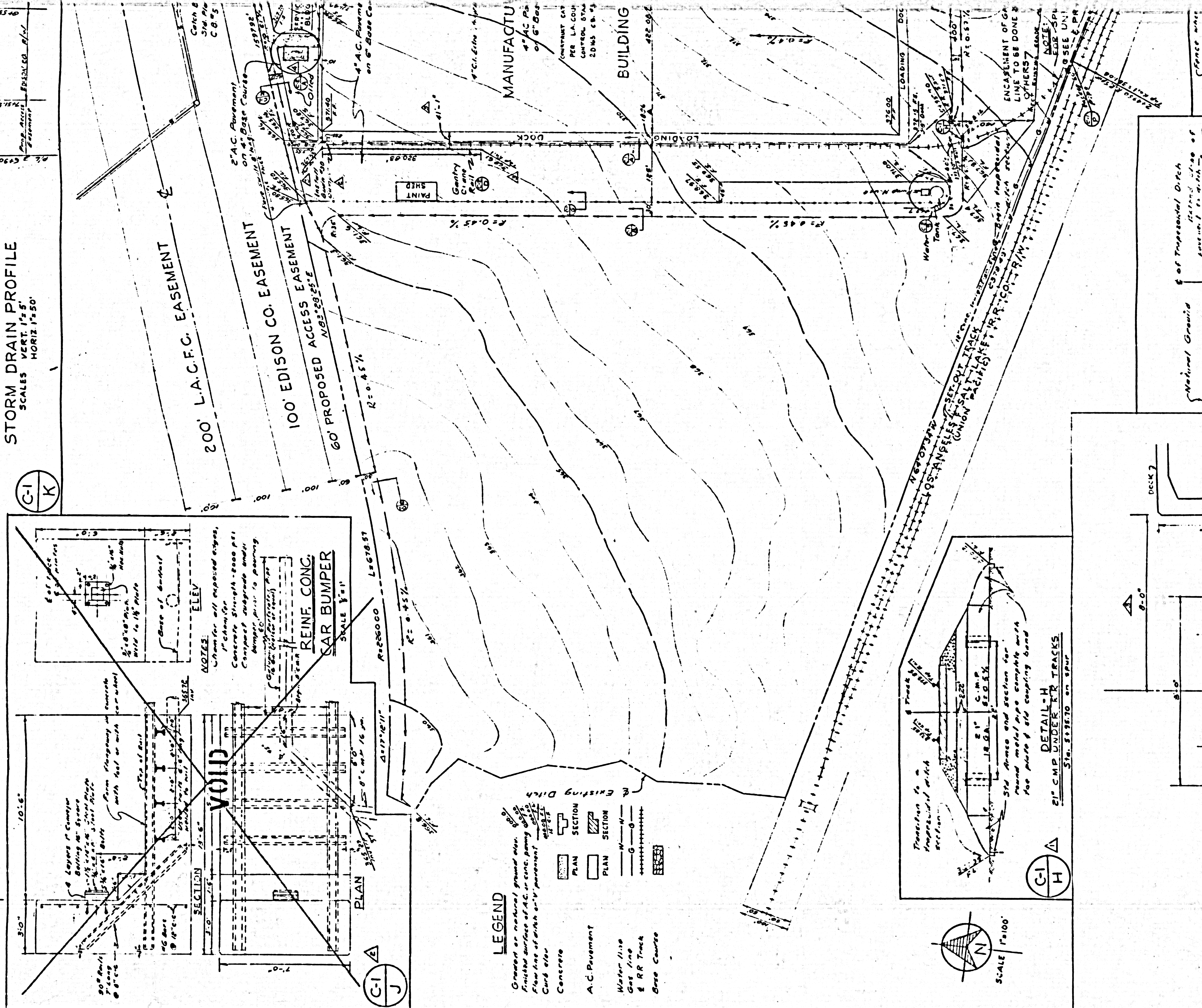
STORM DRAIN PROFILE
 SCALES
 VERT. 1/2" = 5'
 HORIZ. 1/2" = 50'



REIN. CONC.
 CURB BUMPER
 SCALE 1/2" = 1'

200' L.A.C.F.C. EASEMENT
 100' EDISON CO. EASEMENT
 60' PROPOSED ACCESS EASEMENT

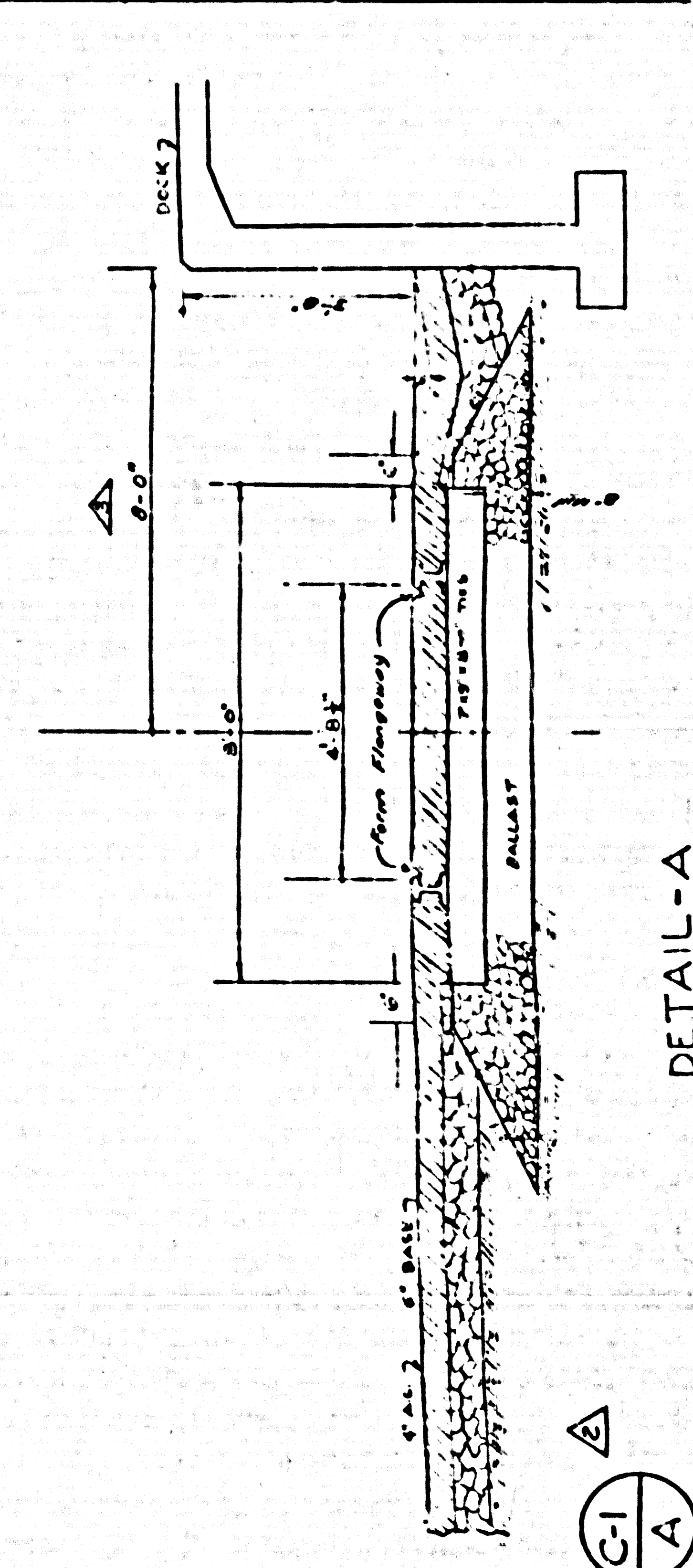
- LEGEND**
- Graded or natural ground surface
 - Finished surface of A.C. or conc. paving
 - Flow line of water or sewer
 - Curb or other
 - Concrete
 - A.C. Pavement
 - Water Pipe
 - Gas Pipe
 - R.R. Track
 - Base Course
- PLAN SECTION
 PLAN SECTION
 PLAN SECTION
 PLAN SECTION



DETAIL H
 21" C.M.P. UNDER R.R. TRACKS
 STA. 85+96.70 on spur

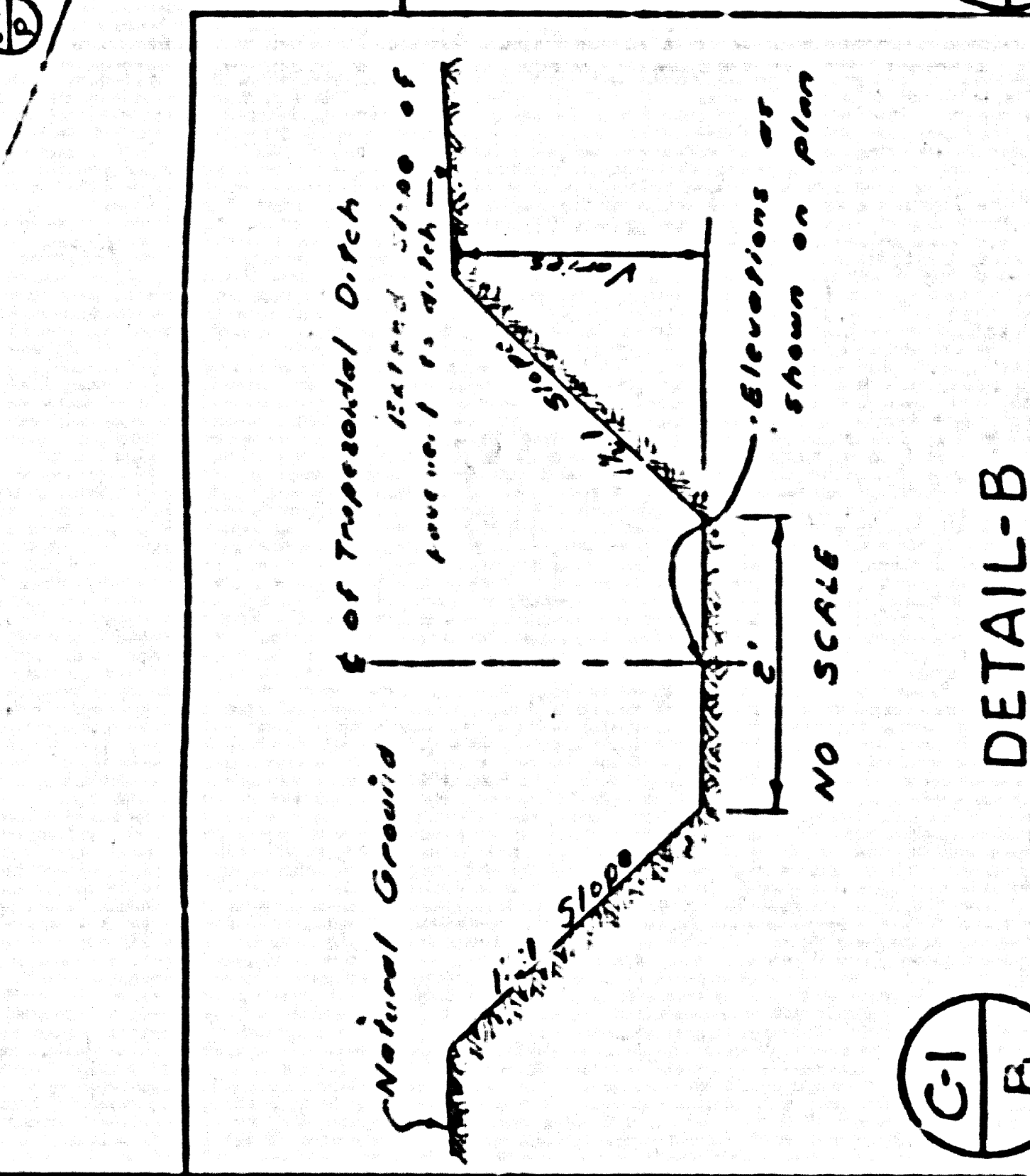
(C-1) H

SCALE 1/4" = 100'



DETAIL A

(C-1) A



DETAIL B

(C-1) B

(C-1) G

REVISIONS

NO.	DATE	DESCRIPTION
1	12/15/54	Issued for General Notes
2	12/15/54	Issued for General Notes
3	1/11/55	Correction of Notes
4	2/10/55	Correction of Notes
5	4/15/55	Correction of Notes
6	4/15/55	Correction of Notes

ALBERT C. MARTIN AND ASSOCIATES
 ARCHITECTS AND ENGINEERS
 939 SOUTH BEAUDRY AVENUE
 LOS ANGELES 17, CALIFORNIA

OFFICE
 DAY
 PUENTI