

PUENTE BLDG. DIST. NO. 2

PROFILE ALIGNMENT AND GRADE OF **P.C. 4202**
SANITARY SEWERS PAGE 1
TO BE CONSTRUCTED IN

TRACT NO 14068 (25326)

PRIVATE CONTRACT NO. 4202

W.S. 38

8 SHEETS - 10 PAGES
SCALE: 1" = 10' VERT. 1" = 40' HORZ.
OCTOBER, 1956

PREPARED BY THE OFFICES OF
A. DICKSON BROWN, JR.
2411 COMMONWEALTH AVE., SUITE 100, PASADENA, CALIF.
REGISTERED PROFESSIONAL ENGINEER
P.E. NO. 1488

A. Dickson Brown, Jr.
P.E. NO. 1488

FOR LEGEND SEE PLAN NO. S-A-64

GRADES TO WHICH THE IMPROVEMENT IS TO BE CONSTRUCTED ARE SHOWN ON PLANS AND PROFILES. GRADE POINTS FOR TOP OF CURB, CENTER LINE OF STREET OR CENTER LINE OF ALLY ARE SHOWN BY CIRCLES ON PROFILES AT ALL POINTS BETWEEN STRUCTURE POINTS. THE GRADE SHALL BE ESTABLISHED SO AS TO CONFORM TO A STRAIGHT LINE BEING DRAWN BETWEEN SAID GRADE POINTS. POINTS ARE IN FEET ABOVE SEA LEVEL. MINIMUM DEPTH OF 5 FT. SHALL BE MAINTAINED UNDER ALL STRUCTURES. THE CONTRACTOR SHALL BE RESPONSIBLE FOR THE ACCURACY OF THE LOCATION OF THE EXISTENCE OF HIGH EXISTENCE OF ANY UNDERGROUND UTILITY PIPE, OR STRUCTURE WITHIN THE LIMITS OF THIS PROJECT. THIS NOTE APPLIES TO ALL PAGES. IF WORK IS TO BE DONE IN A STATE HIGHWAY, A PERMIT MUST BE OBTAINED FROM THE STATE OF CALIFORNIA, DIVISION OF HIGHWAYS, 120 SOUTH BRIDGE STREET.

COUNTY OF LOS ANGELES, CALIFORNIA

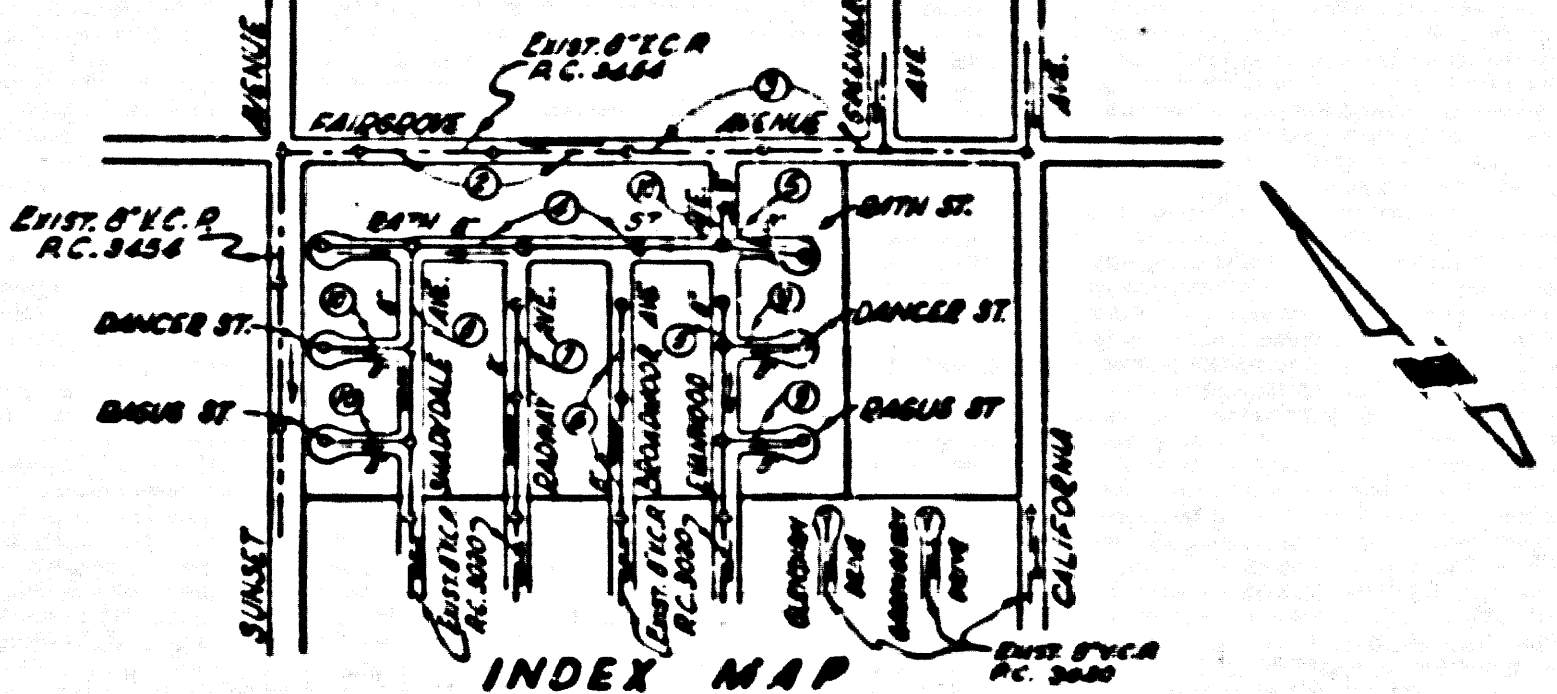
APPROVED: JOHN A. LAMBE, COUNTY ENGINEER APPROVED: A. H. RAWNS, CHIEF ENGINEER

A. H. Rawns *J. A. Lambe*
CHIEF ENGINEER OFFICE ENGINEER
CHECKED BY: *R. L. Oude* 10-1-57
OFFICE OF COUNTY ENGINEER, BOX C. E. NO. 5466

BENCH MARK NS 56 1102
L.S.T. PLASTIC CURB OF CHEVROLET TO
NORTH 21700 CALIFORNIA AVENUE
100 EAST OF S. WILSON AVENUE AND
1.50 SOUTH OF S. FAIRGROVE AVENUE
E.L. 536.945 - AUG. 1955

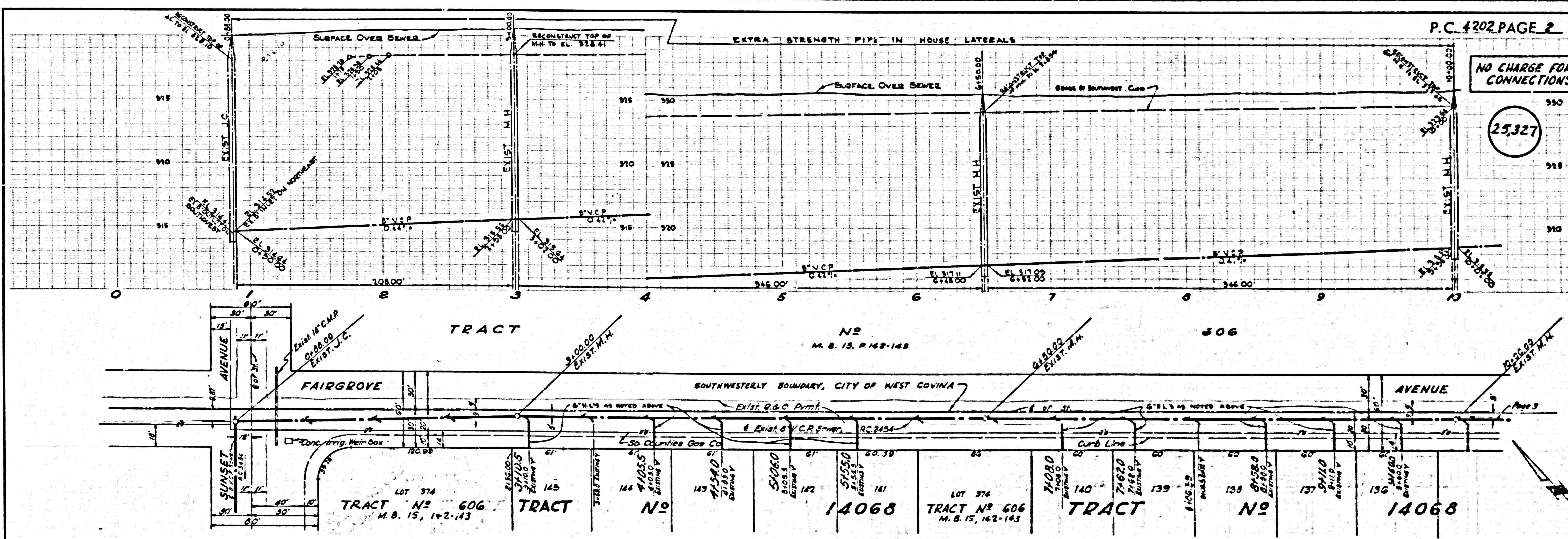
NOTE:
The contractor shall notify the Construction and Storm
Drain Division by telephone, MADISON 9-4747, Ext 362, at
least 24 hours before starting any work under this contract.

- 1. PROFILES SHOWN ON THE PROPERTY LINE OR PROPERTY LINES PRODUCED AT RIGHT ANGLES TO THE CENTER LINE OF THE CURB.
- 2. NO REPRESENTATIVE OF THE COUNTY ENGINEER SHALL SURVEY OR LAYOUT AND POSITION OF THE WORK.
- 3. THE OFFICER OF THE APPROVED REPRESENTATIVE SHALL FURNISH THE COUNTY ENGINEER WITH GRADE SHEETS AND STATION FOR ALL HOUSE LATERALS AND Y BRANCHES AND SHALL PROVIDE STAKES FOR POINTS AT THESE HOUSE LOCATIONS AND STATIONING AND PLACING MARKS. ANY CHANGE IN STATIONING SHALL BE INDICATED BY MARKS BY THE OWNER OR THE REPRESENTATIVE.
- 4. NO REVISIONS SHALL BE MADE IN THESE PLANS WITHOUT THE APPROVAL OF THE COUNTY ENGINEER.
- 5. USE STANDARD MANHOLE FRAMES AND COVERS, S-A-111, EXCEPT AS NOTED.
- 6. USE STANDARD STRENGTH PIPE EXCEPT AS NOTED.
- 7. USE CHEST MANHOLES FOR ALL THROUGH CLAY PIPE JOINTS.
- 8. RESURFACE ALL TRENCH WITHIN PAVED AREA TO MEET L.A. COUNTY ROAD DEPT. OR CALIF. STATE HIGHWAY DEPT. SPECIFICATIONS IN ACCORDANCE WITH PERMITS.
- 9. INCLUDE FOUR FEET OF STOPS AT POINTS OF INTERFERENCE WITH POLES, S-A-115.
- 10. HOUSE LATERALS TO BE CONSTRUCTED WITH SLOPE OF 1/4" PER FOOT. MINIMUM DEPTH SHALL BE 5 FEET EXCEPT AS NOTED.
- 11. ALL STRUCTURES SHALL BE BRICK OR CONCRETE, S-A-116, EXCEPT AS NOTED.
- 12. FOR ALLOWABLE DAMAGE USE THE FORMULA: $D = \frac{W \cdot L}{S}$ SPEC. SEC. 10.
- 13. MANHOLES TO BE UNIMPROVED THROUGH WAY TO BE 6" ABOVE FINISHED GRADE.
- 14. THE PROFILES ENGINEER IS TO FURNISH THE HOUSE LATERAL PROFILES AT THE PROPERTY LINE BELOW TOP OF CURB ELEVATION FOR EACH HOUSE LATERAL ON THE SEWER SHEET.



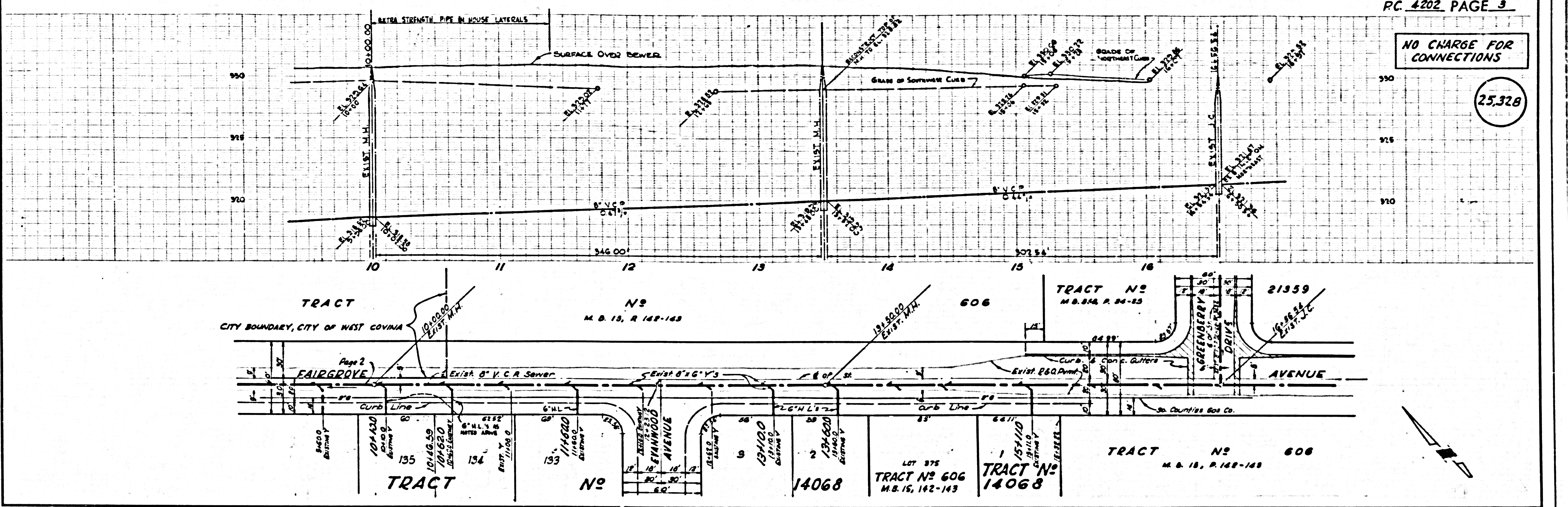
INDEX MAP
SCALE 1/8" = 100'
TRACT NO 14068
P.C. 4202

NO CHARGE FOR CONNECTIONS
10-2-57



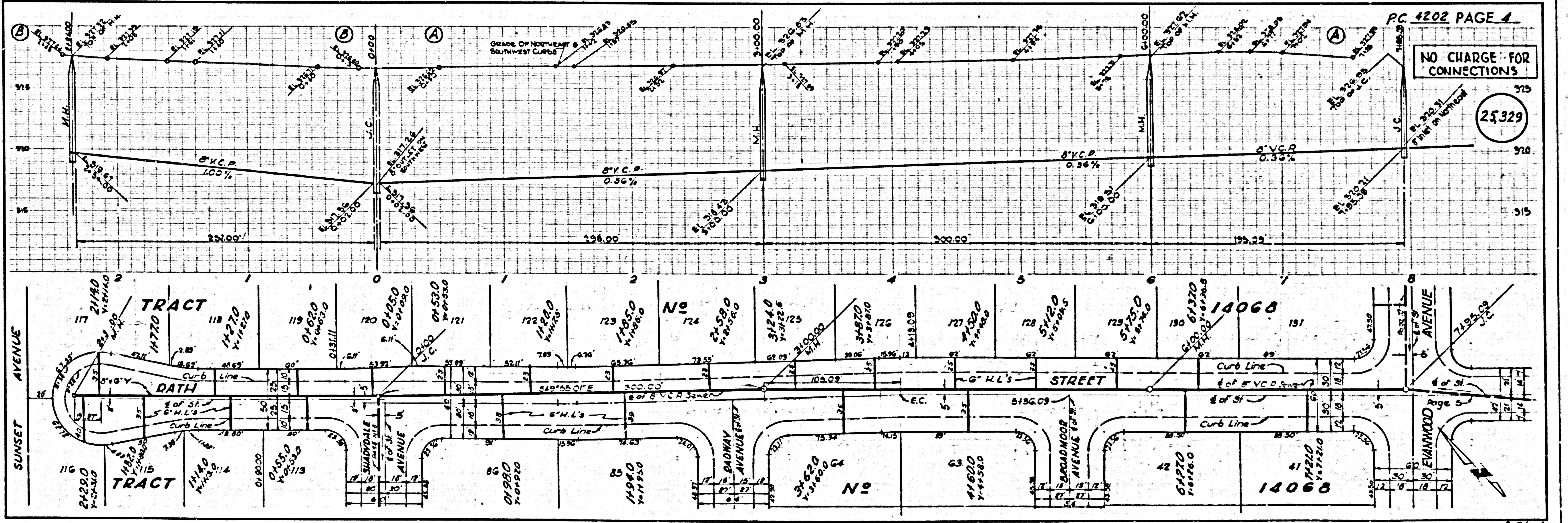
NO CHARGE FOR CONNECTIONS

(25327)



NO CHARGE FOR CONNECTIONS

25,328

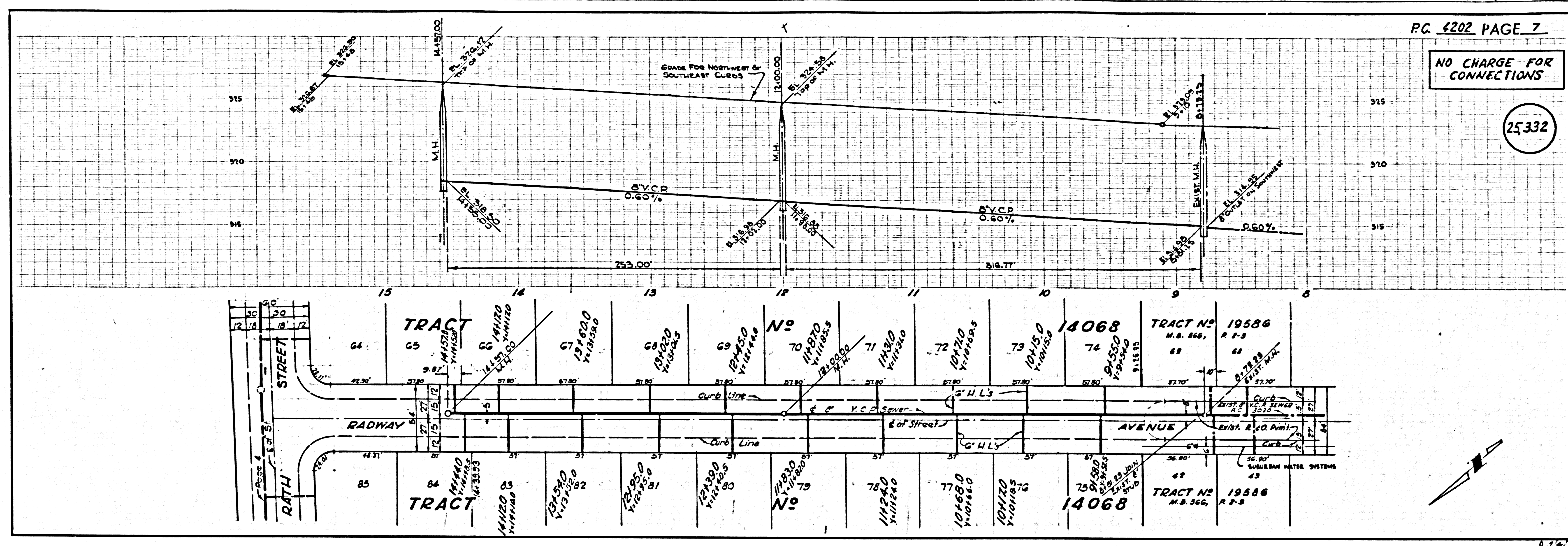


NO CHARGE FOR CONNECTIONS

25,329

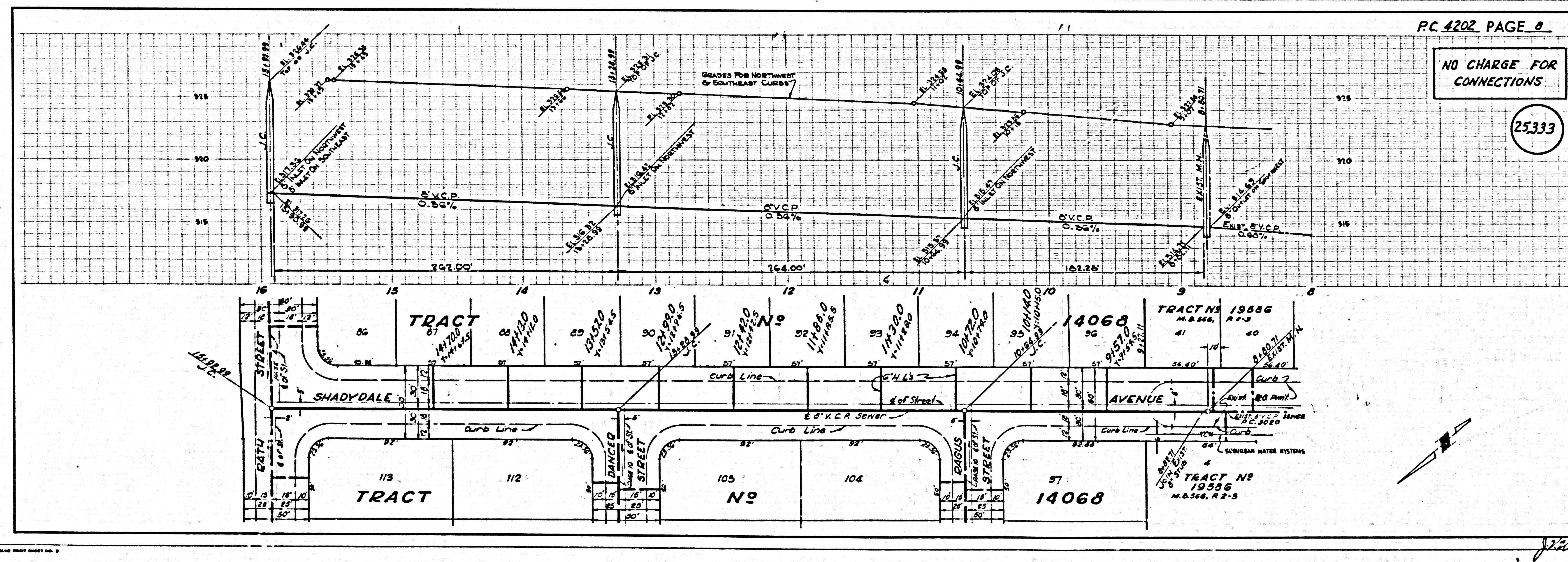
NO CHARGE FOR CONNECTIONS

25332



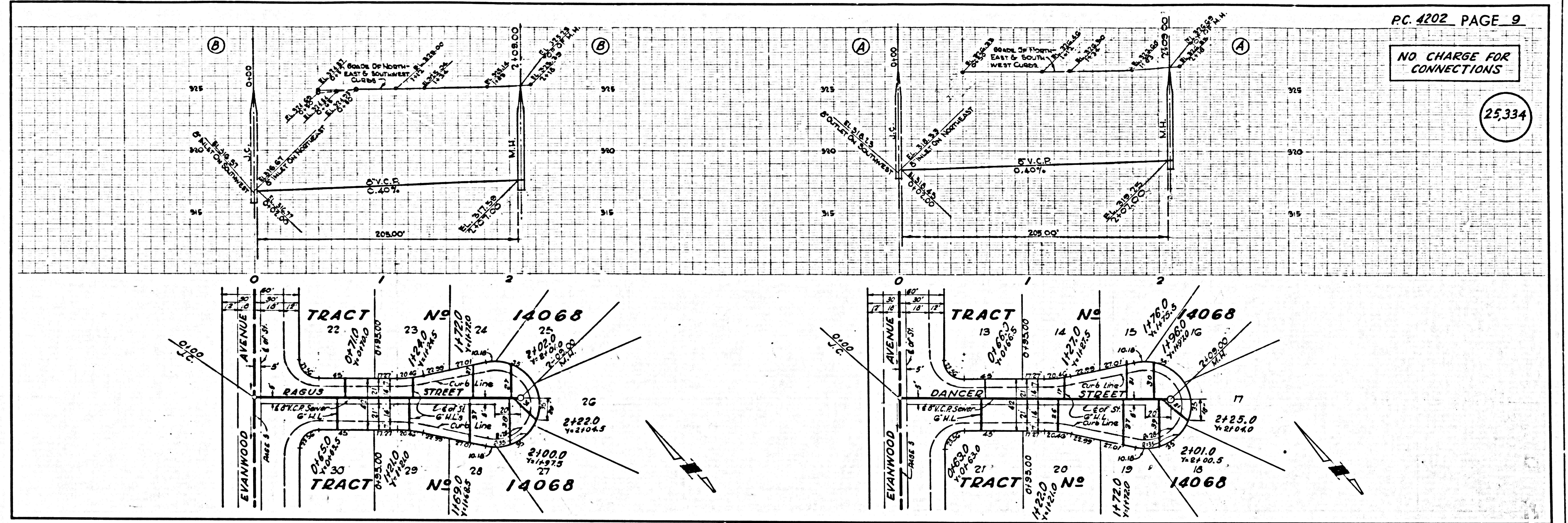
NO CHARGE FOR CONNECTIONS

25333



NO CHARGE FOR CONNECTIONS

25334



NO CHARGE FOR CONNECTIONS

25335

