

PUENTE BLDG. DIST. NO. 2

PROFILE ALIGNMENT AND GRADE OF P.C. 4209  
SANITARY SEWERS PAGE 1  
TO BE CONSTRUCTED IN

TRACT NO. 21516 (24,248)  
PRIVATE CONTRACT NO. 4209

W.S. 46  
3 SHEETS, 5 PAGES  
SCALE: HORIZ. 1" = 40' VERT. 1" = 4' OCTOBER, 1956

PREPARED BY THE OFFICE OF  
A. RICHARD BOONIN, JR.  
COUNTY ENGINEER  
FOR LEGEND SEE PLAN NO. S-A-64

NOTE: GRADE TO WHICH THIS IMPROVEMENT IS TO BE CONSTRUCTED HAS SHOWN ON PLANS AND PROFILES. GRADE POINTS FOR TOP OF CURB, CENTER LINE OF STREETS, CENTER LINE OF ALLEYS AND SHOWN BY CIRCLES ON PROFILES AT ALL POINTS BETWEEN MANHOLE POINTS. ELEVATIONS ARE IN FEET ABOVE MEAN SEA LEVEL UNLESS OTHERWISE SPECIFIED. THE GRADES AND ELEVATIONS ARE SUBJECT TO THE APPROVAL OF THE COUNTY ENGINEER AND SHALL BE PROVIDED ONLY IN THE PRESENCE OF THE COUNTY ENGINEER. THIS PLAN IS TO BE CONSIDERED AS A REPRESENTATION AS TO THE ACCURACY OF THE LOCATION OF THE EXISTENCE OF ANY UNDERGROUND SERVICE PIPES, OR STRUCTURES WITHIN THE LIMITS OF THIS PROJECT. THIS NOTE APPLIES TO ALL PAGES. IF WORK IS TO BE DONE IN A STATE HOSPITAL, A PERMIT MUST BE OBTAINED FROM THE STATE OF CALIFORNIA, DIVISION OF HIGHWAYS, 128 SOUTH SPRING STREET.

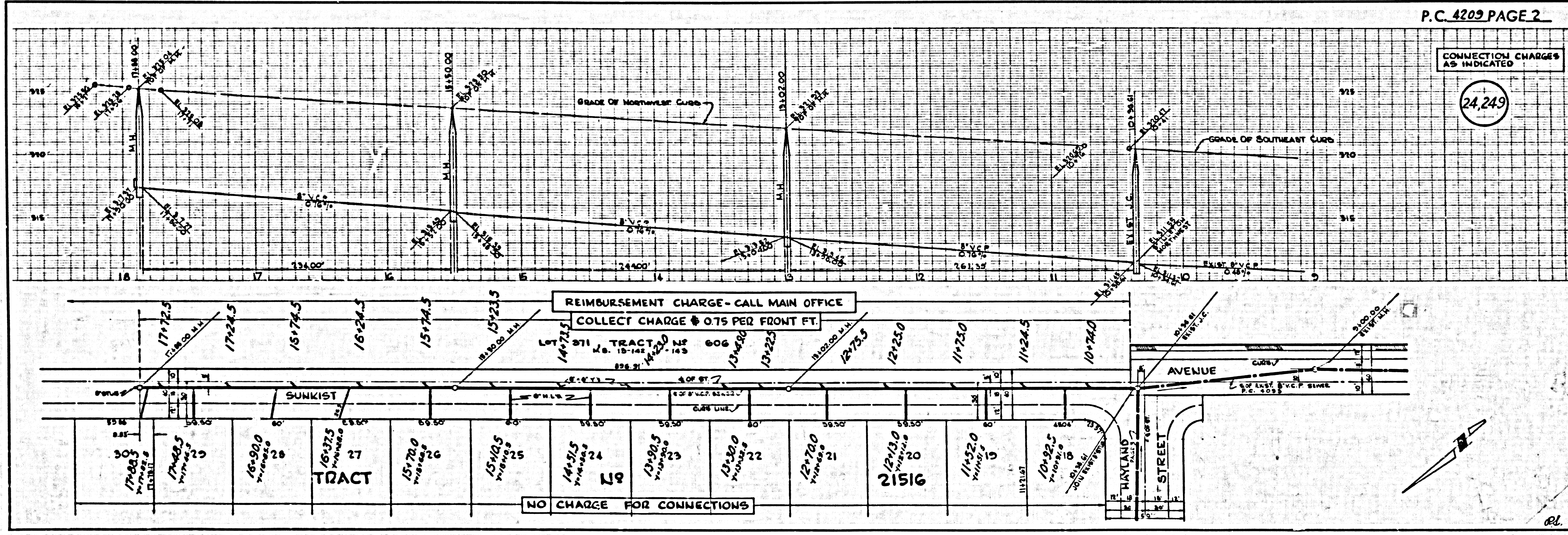
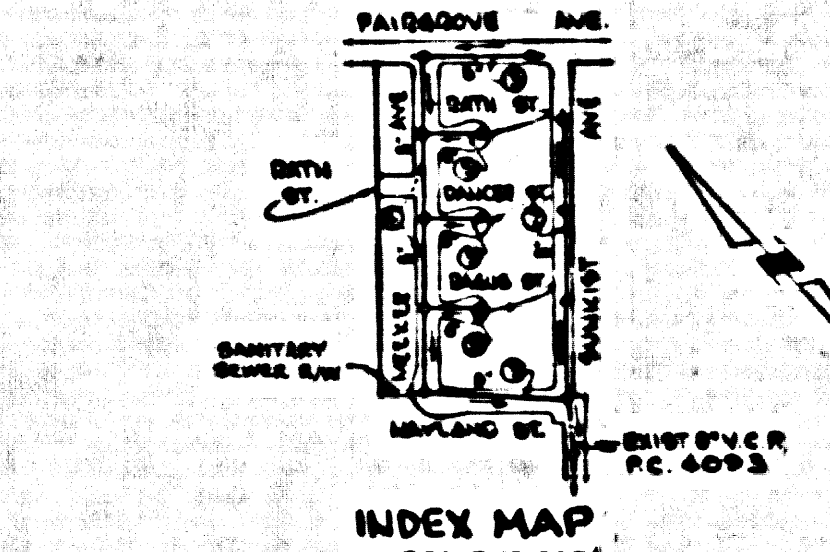
COUNTY OF LOS ANGELES, CALIFORNIA  
APPROVED, JOHN A. LAMME, COUNTY ENGINEER  
APPROVED, A. B. RAWLA, CHIEF ENGINEER  
CHECKED BY *[Signature]* 12-13-56  
OFFICE OF COUNTY ENGINEER, 100 S. E. ST. 7860

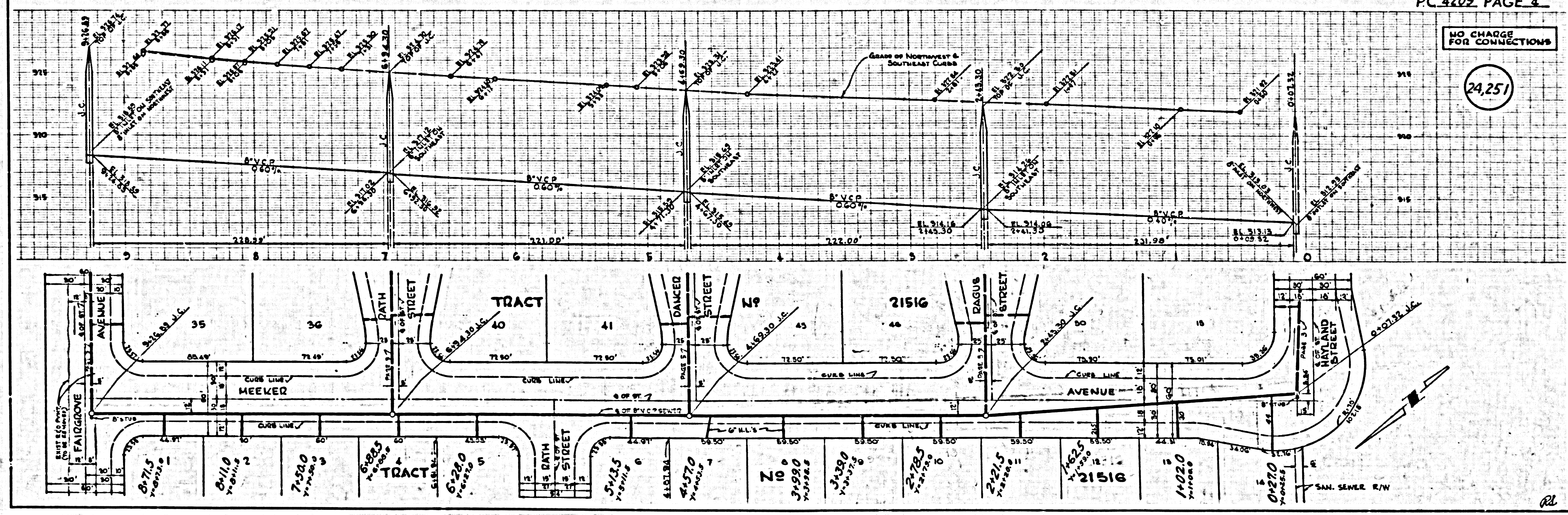
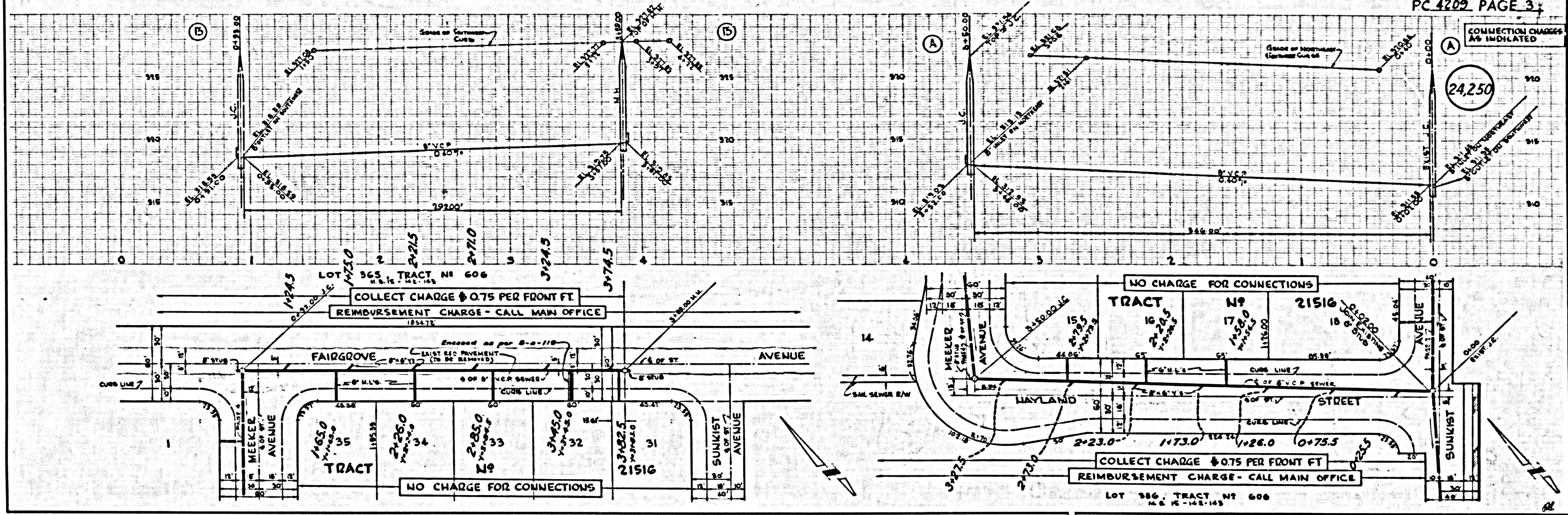
BENCH MARK NO. 56 389  
LEAD AND TACK IN CONCRETE HEADMILL OF CANTILEVER AT IMPROVED CORNER OF FRANCISCOITE AVENUE AND GRADE BEINGS ELEV. 540.167 PUENTE BLDG. DIST.

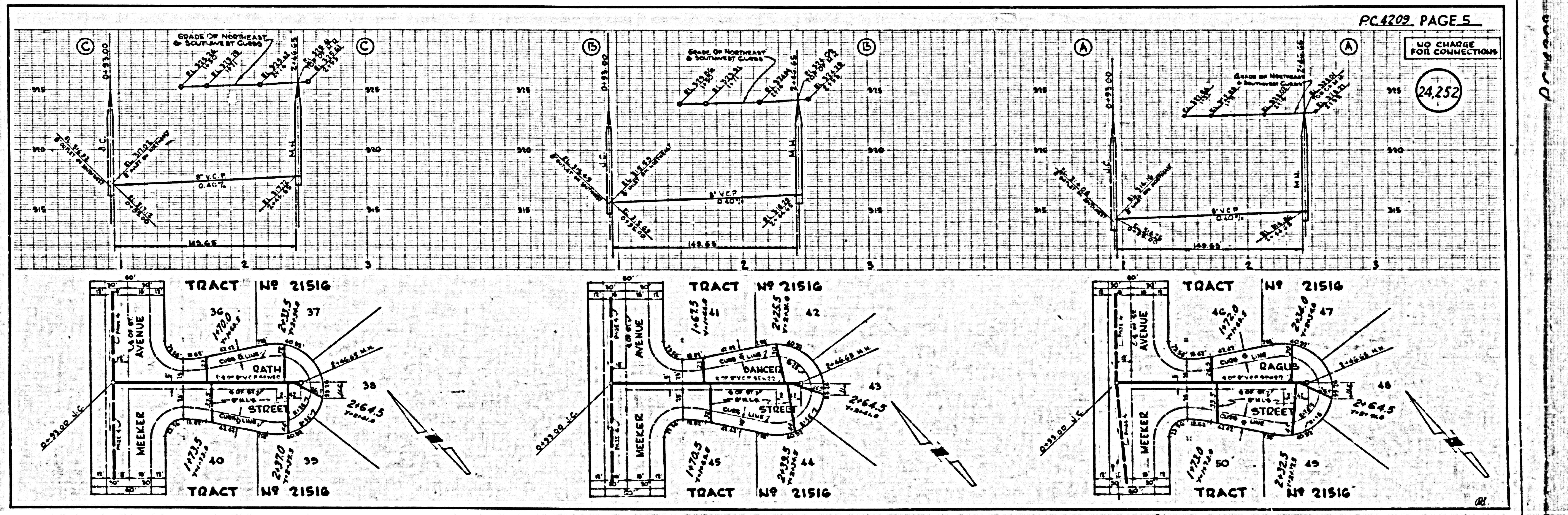
INDEX TABLE

SHEETS	PAGES
3	5

CONNECTION CHARGES AS INDICATED  
*L. Curtis 12-13-56*







Drawn