

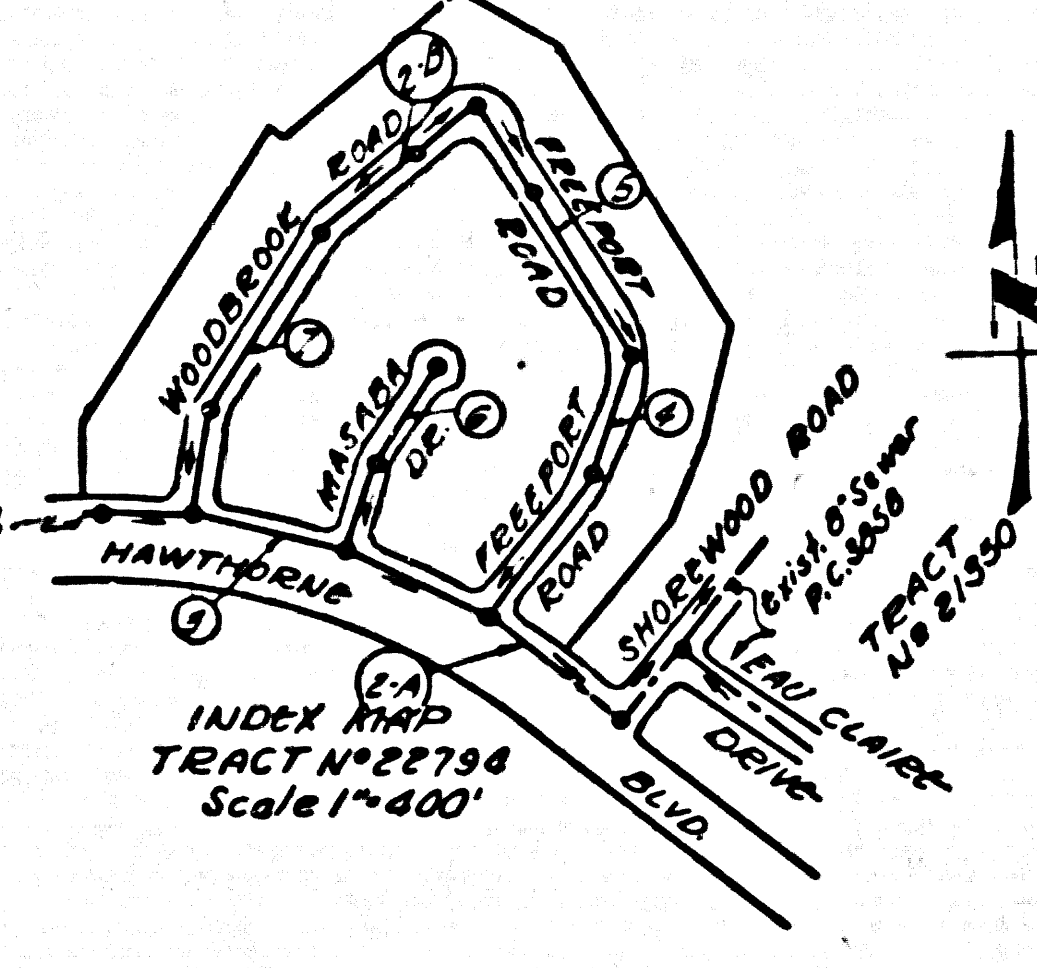
B.M. County Survey B.M. U.S.C. & G.S. 3rd. Disc.
 Stamped 0-766 1246 set flush with
 ground 43.7' N of E. of Palms Verde Drive
 11.414 East of E. of Normandie Ave. Elev. 355.518

NOTE:
 The contractor shall notify the Construction and
 Storm Drain Division by telephone - Mainline 3-4241, ext. 342
 at least 24 hours before starting any work under this contract.

LOMITA BLDG. DIST. NO. 71

- NOTES:
1. PROFILE STAGES ON THE PROPERTY LINE OR PROPERTY LINES PRODUCED AT RIGHT ANGLES TO THE SEWER LINE AT THE CENTER LINE OF EACH MANHOLE.
 2. NO IMPROVEMENTS OF THE COUNTY ENGINEER WILL BE MADE ON ANY PORTION OF THE WORK.
 3. THE OWNER OR HIS AUTHORIZED REPRESENTATIVE SHALL FURNISH THE COUNTY ENGINEER WITH SPREAD SHEETS AND STATION FOR ALL HOUSE LATERALS AND 18" INCHES AND SMALL PROFILE STAGES FOR THEM AT THEIR PROPER LOCATION WITH STATION AND PLAINLY MARKED AND COULDS IN LOCATION SHALL BE REQUESTED BY WRITING BY THE OWNER OR HIS REPRESENTATIVE.
 4. NO REVISIONS SHALL BE MADE IN THESE PLANS WITHOUT THE APPROVAL OF THE COUNTY ENGINEER.
 5. USE STANDARD MANHOLE FRAMES AND COVERS, S.A.117, EXCEPT AS NOTED.
 6. USE STANDARD STRENGTH PIPE EXCEPT AS NOTED.
 7. USE CEMENT MORTAR FOR ALL UNWEATHERED CLAY PIPE JOINTS.
 8. REINFORCE ALL TRACHEA WITHIN MANHOLES TO MEET L.A. COUNTY ROAD DEPT. OR CAMP STATE HIGHWAY DEPT. SPECIFICATIONS IN ACCORDANCE WITH PERMITS.
 9. BACKFILL FOUR FEET OF SEWER AT POINTS OF INTERFERENCE WITH POLES, S.A.119.
 10. HOUSE LATERALS TO BE CONSTRUCTED WITH INVERTS AT PROPERTY LINE. 18" MINIMUM CURB GRADE EXCEPT AS NOTED.
 11. FOR MANHOLES EXCEPT THE USE FORMULA INDICATED IN SPEC. SEC. 14.
 12. MANHOLES FOR UNIMPROVED WHEEL-ON-WAY TO BE 4' ABOVE FINISHED GRADE.
 13. No construction will be permitted in filled areas unless acceptable certification is submitted to the construction division of the county engineer, Department of Public Works, for approval. If the certification is not submitted, the contractor must be substituted for the contractor for all work in filled areas.
 14. If the private engineer is to furnish the house lateral copies of the property line and/or the (top or curb elevations) for each house lateral on the grade sheet.
 15. The private engineer shall furnish the house lateral depth at the property line below the top of each structure for each house lateral on the grade sheet.

NO CHARGE FOR CONNECTIONS
 See Data Table



ENGINEERING SERVICE CORPORATION			
1127 W. WASHINGTON BLVD.			
LOS ANGELES 15, CALIF. N. 9-7281			
REVISIONS		TRACED BY <u>E.A.D.</u>	
		DES'G'D BY <u>E.A.D.</u>	
		CK'D BY <u>E.A.D.</u>	
		SUBMITTED	
SLAB STRUCTURES OK'D			
W. O. NO.	OWN. NO.	DATE	SCALE
6601-22			As Noted

PROFILE ALIGNMENT AND GRADE OF P.C. 4213
 SANITARY SEWERS' PAGE 1
 TO BE CONSTRUCTED IN

TRACT No 22794

PRIVATE CONTRACT NO. 4213

W.S. 27
 SHEETS, 7 PAGES
 SCALE: VERT. 1"=4'
 HORIZ. 1"=40'

PREPARED IN THE OFFICES OF
 ENGINEERING SERVICE CORPORATION
 BY C. F. Zornig
 REG. C. E. NO. 3652

FOR LEGEND SEE PLAN NO. S-A-64

GRABER TO WHICH THE IMPROVEMENT IS TO BE CONSTRUCTED ARE SHOWN ON PLANS AND PROFILE GRADE POINTS FOR TOP OF CURB, CENTER LINE OF STREETS, OF CENTER LINE OF ALLEYS AND SHOWN BY CIRCLES ON PROFILES AT ALL POINTS BETWEEN INDICATED POINTS THE GRADE SHALL BE DETERMINED SO AS TO CONFORM TO A STRAIGHT LINE BEHAVING BETWEEN SAID INDICATED POINTS.

ELEVATIONS ARE IN FEET ABOVE M.S.C. & G.S. SEA LEVEL DATUM OF 1929.

THIS DRAWING AND THE DATA HEREON ARE HEREBY MADE A PART OF THE SPECIFICATIONS.

BEFORE WORK CAN BE STARTED, THE CONTRACTOR MUST OBTAIN A PERMIT TO EXCAVATE IN COUNTY STREETS FROM THE L.A. COUNTY ROAD DEPT. AND IF THE WORK IS TO BE DONE IN A STREET, THE CONTRACTOR MUST OBTAIN A PERMIT TO EXCAVATE IN COUNTY STREETS FROM THE L.A. COUNTY ROAD DEPT. AND IF THE WORK IS TO BE DONE IN A STREET, THE CONTRACTOR MUST OBTAIN A PERMIT TO EXCAVATE IN COUNTY STREETS FROM THE L.A. COUNTY ROAD DEPT. AND IF THE WORK IS TO BE DONE IN A STREET, THE CONTRACTOR MUST OBTAIN A PERMIT TO EXCAVATE IN COUNTY STREETS FROM THE L.A. COUNTY ROAD DEPT.

COUNTY OF LOS ANGELES, CALIFORNIA

APPROVED, JOHN A. LAMME, COUNTY ENGINEER

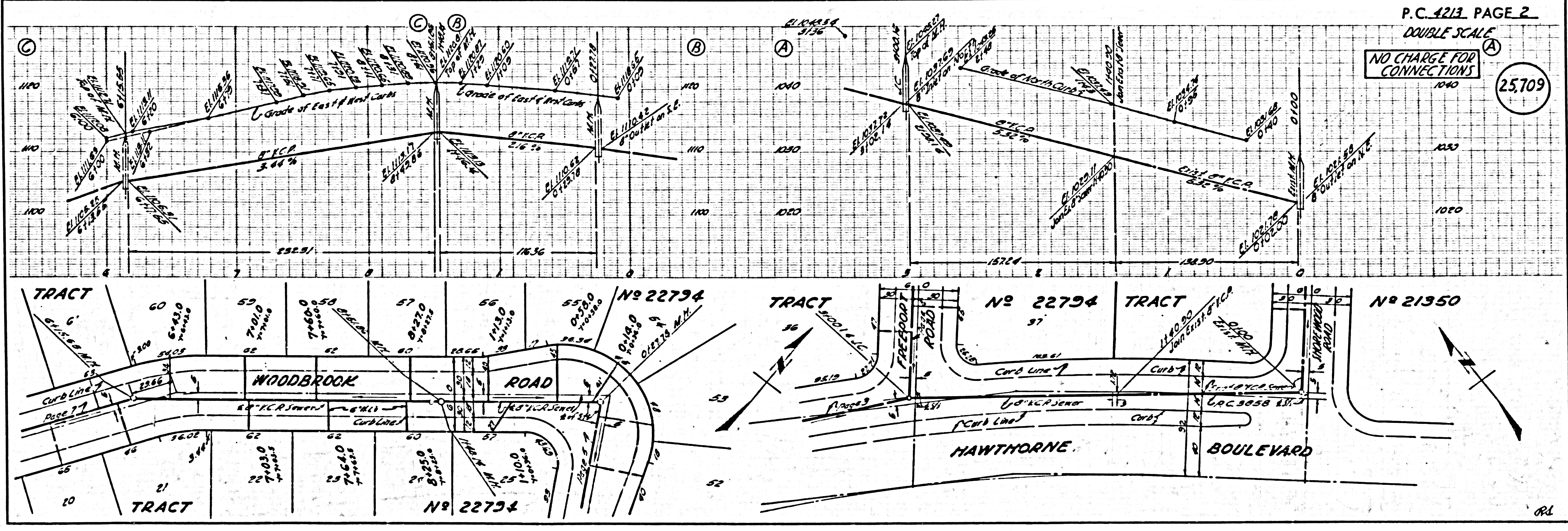
APPROVED, A. H. BARNHART, CHIEF ENGINEER

BY N. F. Brannan COUNTY SANITATION ENGINEER

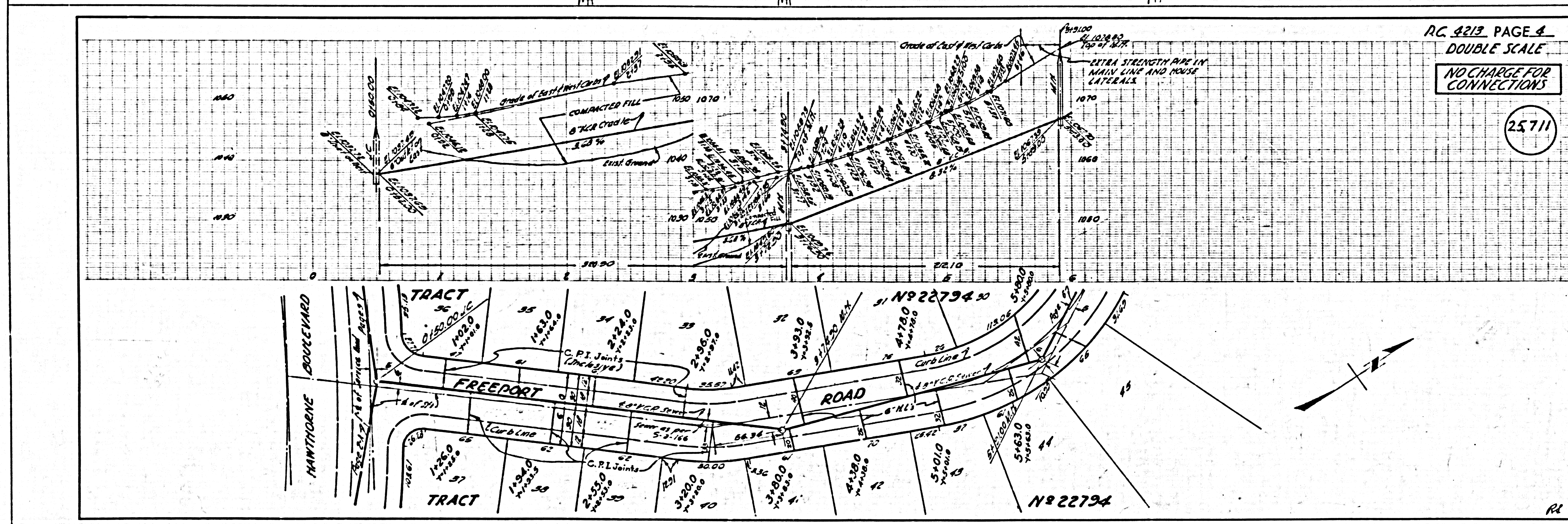
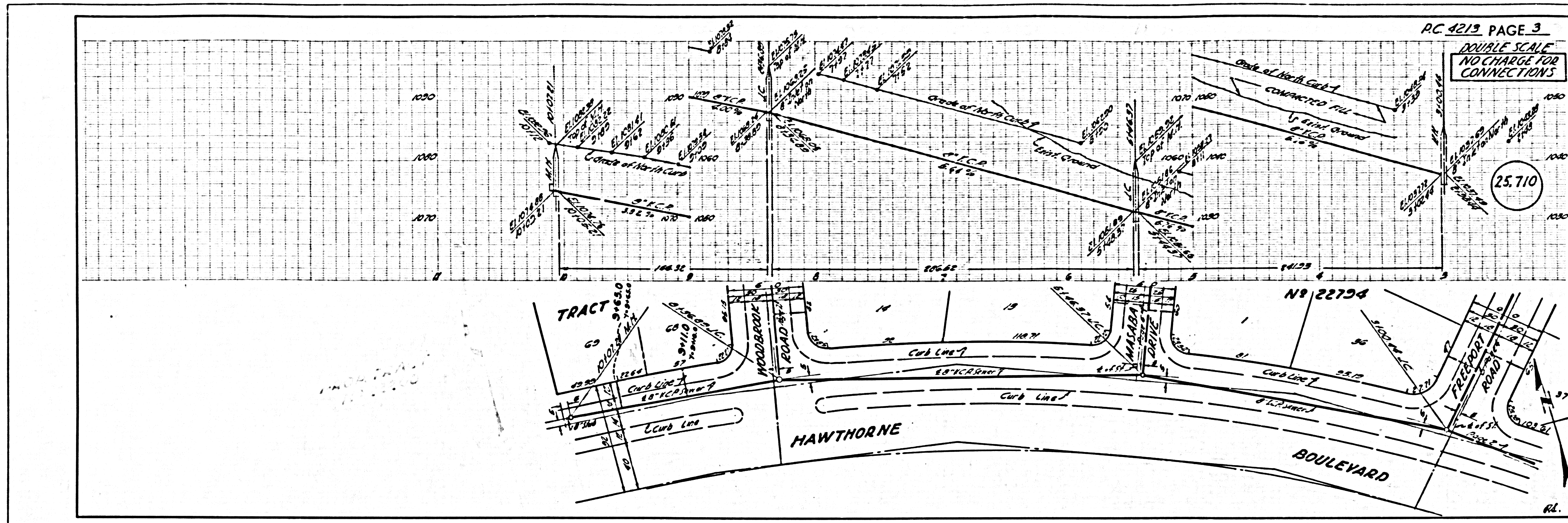
BY A. H. Barnhart CHIEF ENGINEER

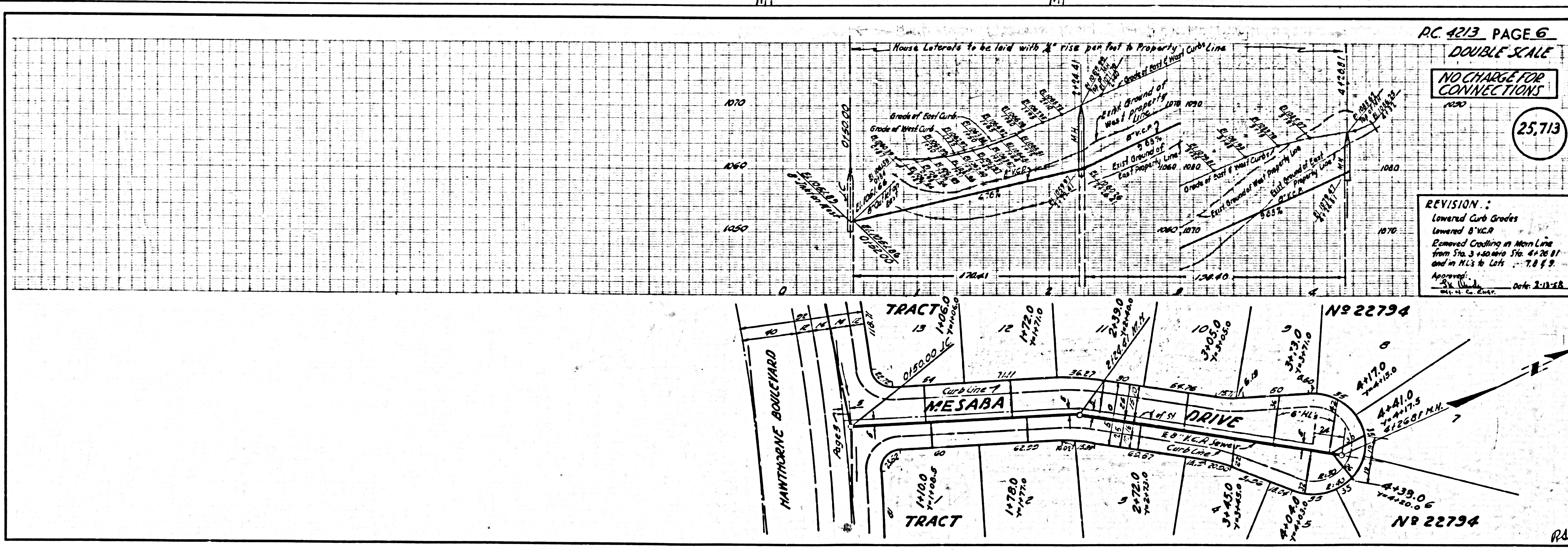
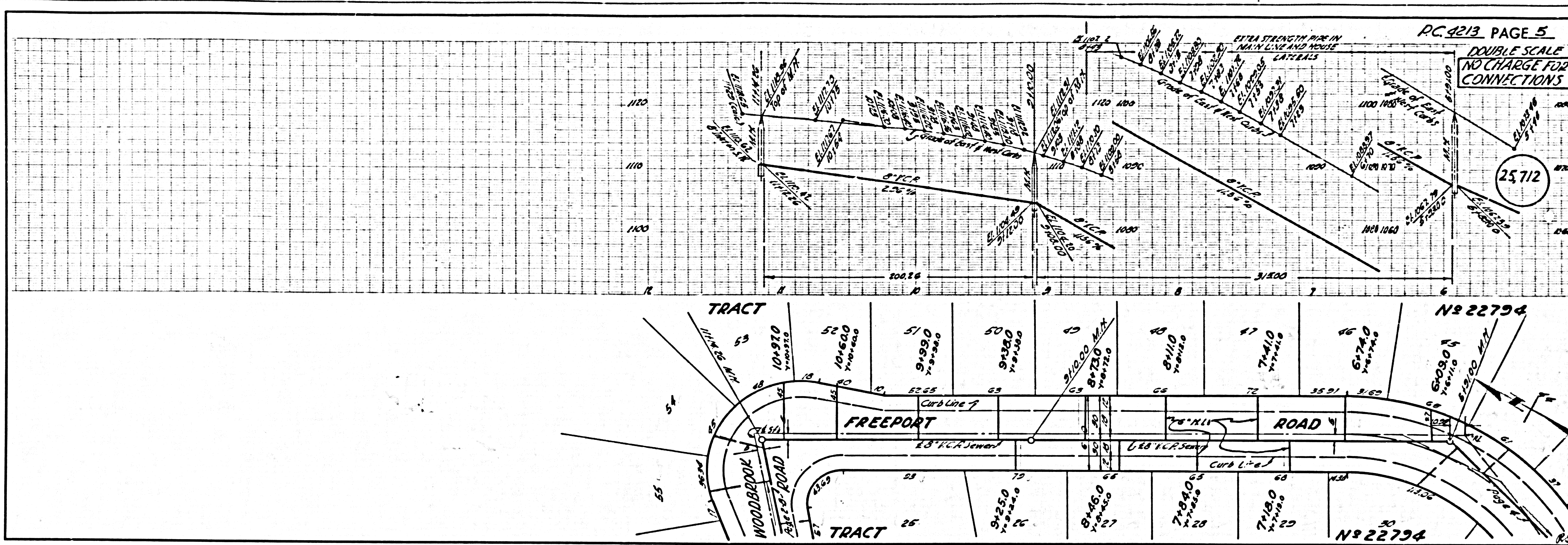
CHECKED BY C. F. Zornig

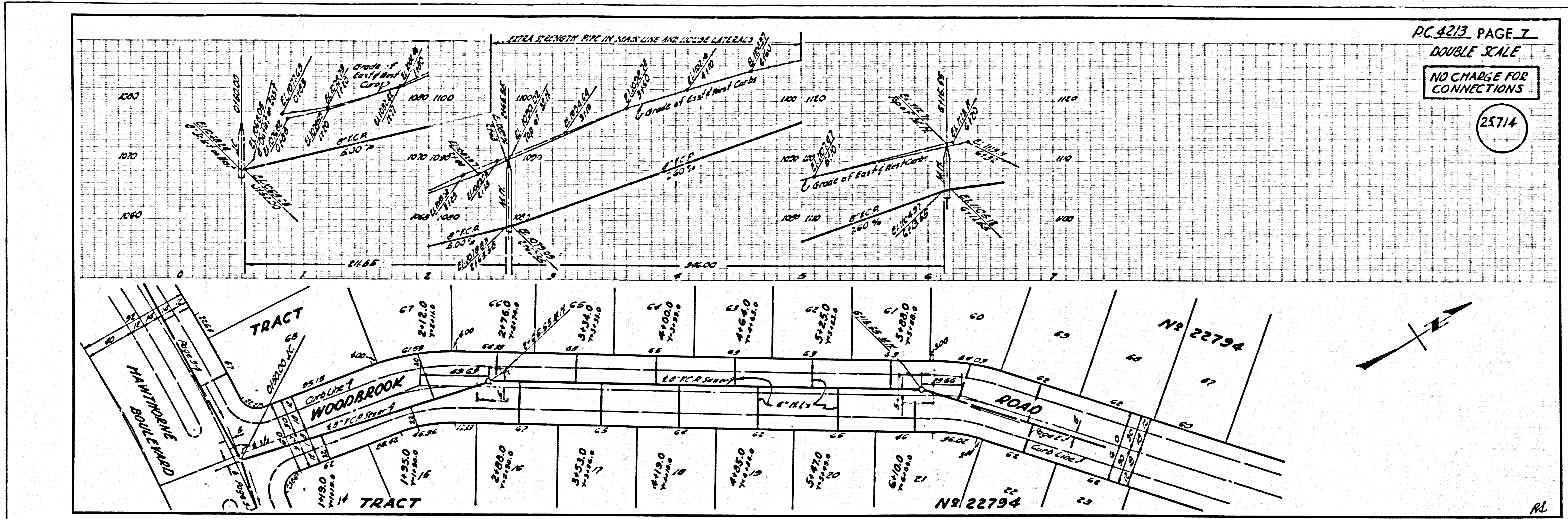
OFFICE OF COUNTY ENGINEER, 1127 W. WASHINGTON BLVD.



P.C. 4213, PAGE 2
 DOUBLE SCALE
 NO CHARGE FOR CONNECTIONS
 25,709





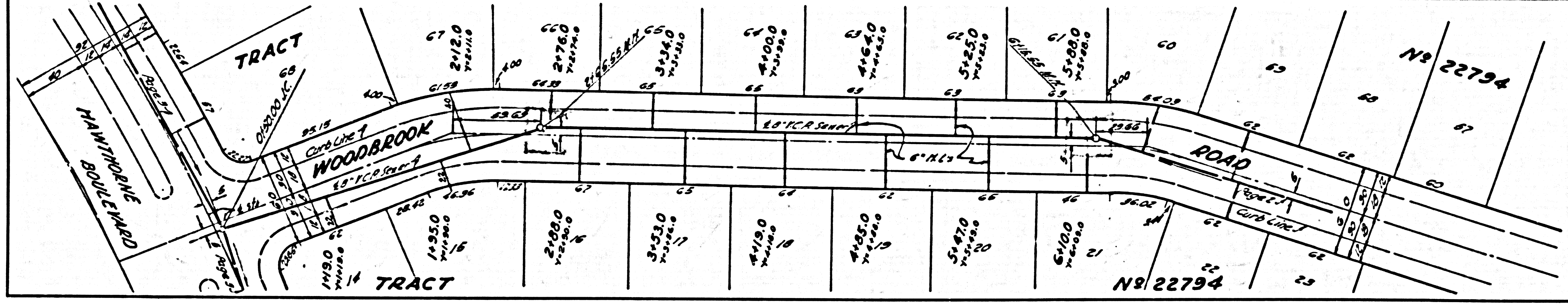


PC 4213 PAGE 7

DOUBLE SCALE

NO CHARGE FOR CONNECTIONS

25714



M4

M4

