

B.M. 51, 393 BRASS CIP @ E.C. OF SANTA FE AVE, 1500'S N. OF VICTORIA ST. 50'S E. OF E. OF SANTA FE AVE. ELEV. 31.70

LENNOX BLDG. DIST. NO. 7

PROFILE ALIGNMENT AND GRADE OF P.C. 4219B
SANITARY SEWERS PAGE 1
TO BE CONSTRUCTED IN

SANITARY SEWER RIGHTS OF WAY
WEST OF SUSANA ROAD

PRIVATE CONTRACT NO. 4219B

W.S. 32

4 SHEETS, 7 PAGES

SCALE: 1" = 40' DATE: MARCH 1956

PREPARED IN THE OFFICES OF

QUINTON ENGINEERS LTD.

H. W. Quinton

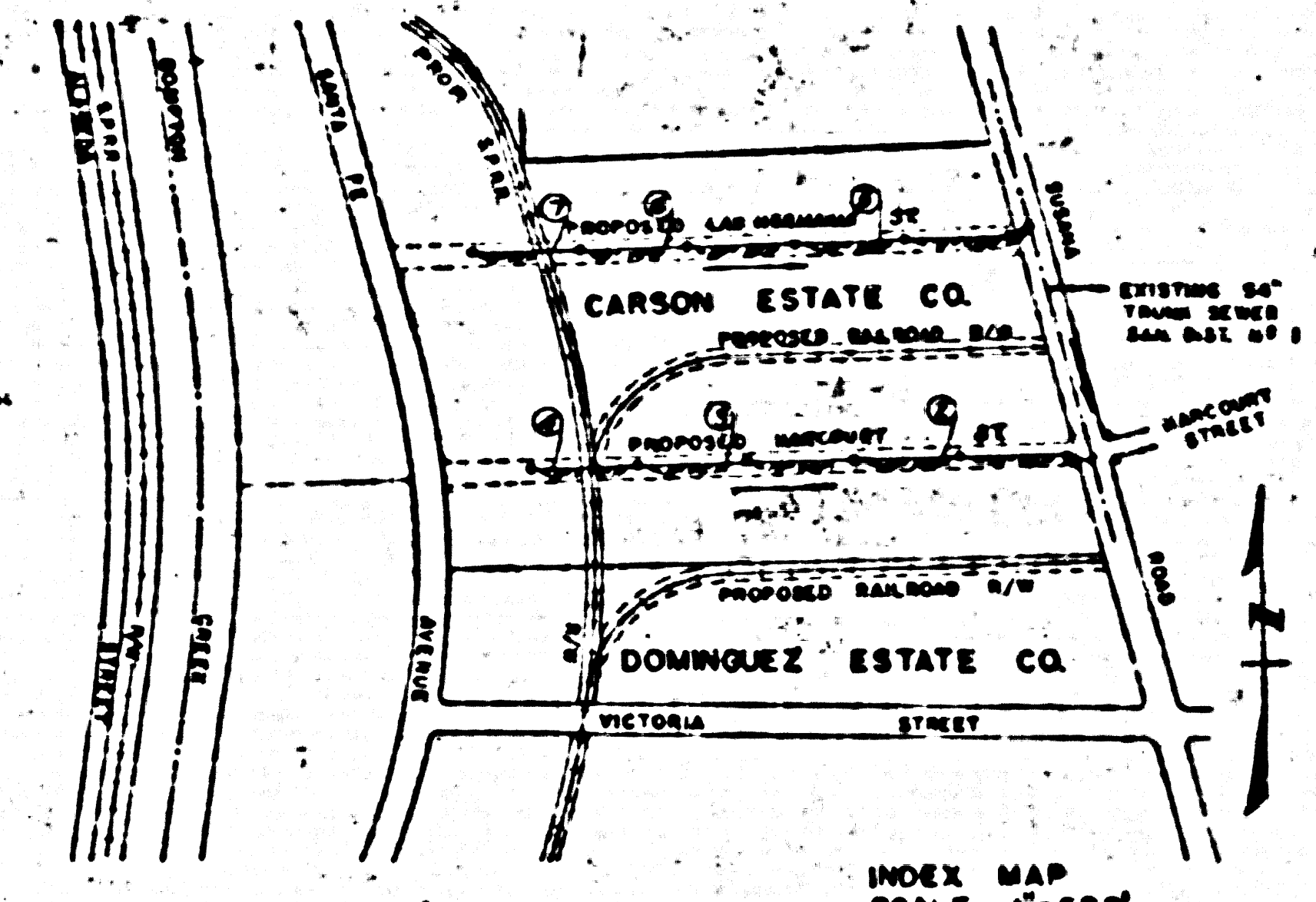
REG. C. E. NO. 422

FOR LEGEND SEE PLAN NO. S-A-64

"NO CHARGE FOR CONNECTIONS"
7-27-55

before breaking into any existing structure and before final acceptance of this work, County Sanitation District should be notified in order that required inspection may be made.

- NOTE
- PROFILES SHOWN ON THIS DRAWING ARE PRODUCED BY MEANS OF THE LEVEL LINE AT THE CENTER LINE OF EACH MANHOLE.
 - NO INTERFERENCES OF THE COUNTY ENGINEER WILL BE MADE ON LAYOUT AND POSITION OF THE WORK.
 - THE OWNER OF THE APPROVED SPECIFICATIONS SHALL FURNISH THE COUNTY ENGINEER WITH GRASS DITCHES AND SPACING FOR ALL HOUSE LATERALS AND T. BRANCHES AND SHALL PROVIDE STAKES FOR THEM AT THEIR PROPER LOCATIONS WITH STATIONING AND BEARING. ALL CHANGES IN LOCATIONS SHALL BE INDICATED BY THE OWNER OF THE APPROVED SPECIFICATIONS.
 - REVISIONS SHALL BE MADE ON THESE PLANS WITHOUT THE APPROVAL OF THE COUNTY ENGINEER.
 - USE STANDARD MANHOLE FRAMES AND COVERS, S.A. 117.
 - USE STANDARD 18" DIAMETER PIPES.
 - USE CHIMNEY ROOFS FOR ALL UNVENTED FLAT ROOF AREAS.
 - CONSTRUCT ALL TRENCHES WITHIN FIVE FEET TO THE E. & COUNTY ROAD DEPT. OR CALIF. STATE HIGHWAY DEPT. SHOULD ANY BE ACCORDANCE WITH PERMITS.
 - SHALL FURNISH TEST OF SEWER AT POINTS OF INTERFERENCE WITH PIPES, S.A. 119.
 - ALL STRUCTURES SHALL BE BUILT WITHIN SPECIFICATIONS, S.A. 118, COUNTY ENGINEER.
 - FOR REMOVAL OF EXISTING STRUCTURES SEE PLAN NO. S-A-64.
 - SHALL FURNISH STAKES FOR THE PROPOSED SEWER LINE, 1" DIAMETER, 8" DIA. OR 12" DIA.
 - SHALL FURNISH STAKES FOR THE PROPOSED SEWER LINE, 1" DIAMETER, 8" DIA. OR 12" DIA.
 - ALL STRUCTURES SHALL BE CONSTRUCTED WITHIN 5' EXTENSIONS FOR S-A-64.



INDEX MAP SCALE 1"=500'

A PORTION OF RANCHO SAN PEDRO INDUSTRIAL AREA

NOTE

SEWER TO UNDER THE UNDERPASS IS TO BE CONSTRUCTED AND BUILT ON PLANS AND PROFILES SHOWN ON THIS DRAWING. THE CENTER LINE OF SEWER, OR CENTER LINE OF ALLEY, OR CENTER LINE OF DRIVE, AT ANY POINT BETWEEN MANHOLES SHALL BE ESTABLISHED AS TO LOCATION TO A POINT LINE BETWEEN SEWER AND ROAD.

SEWER TO UNDER THE UNDERPASS IS TO BE CONSTRUCTED AND BUILT ON PLANS AND PROFILES SHOWN ON THIS DRAWING. THE CENTER LINE OF SEWER, OR CENTER LINE OF ALLEY, OR CENTER LINE OF DRIVE, AT ANY POINT BETWEEN MANHOLES SHALL BE ESTABLISHED AS TO LOCATION TO A POINT LINE BETWEEN SEWER AND ROAD.

THE DRAWING AND THE DATA HEREON ARE HEREBY MADE A PART OF THE SPECIFICATIONS. NO OTHER CONTRACT DOCUMENTS SHALL BE USED IN THE CONSTRUCTION OF THIS PROJECT. THE COUNTY ENGINEER HAS MADE NO GUARANTEE AS TO THE ACCURACY OF THE DATA HEREON. THE CONTRACTOR SHALL BE RESPONSIBLE FOR THE ACCURACY OF THE DATA HEREON. THE COUNTY ENGINEER HAS MADE NO GUARANTEE AS TO THE ACCURACY OF THE DATA HEREON. THE CONTRACTOR SHALL BE RESPONSIBLE FOR THE ACCURACY OF THE DATA HEREON.

APPROVED, JOHN A. LAMBE, COUNTY ENGINEER

APPROVED, A. B. RAYNE, CHIEF ENGINEER

W. A. P. Collins, CHIEF ENGINEER

CHECKED BY: R. V. Under, 2-15-57

OFFICE OF COUNTY ENGINEER, 115 S. W. 94th ST.

P.C. 4219B PAGE 2

"NO CHARGE FOR CONNECTIONS"
7-27-55

