

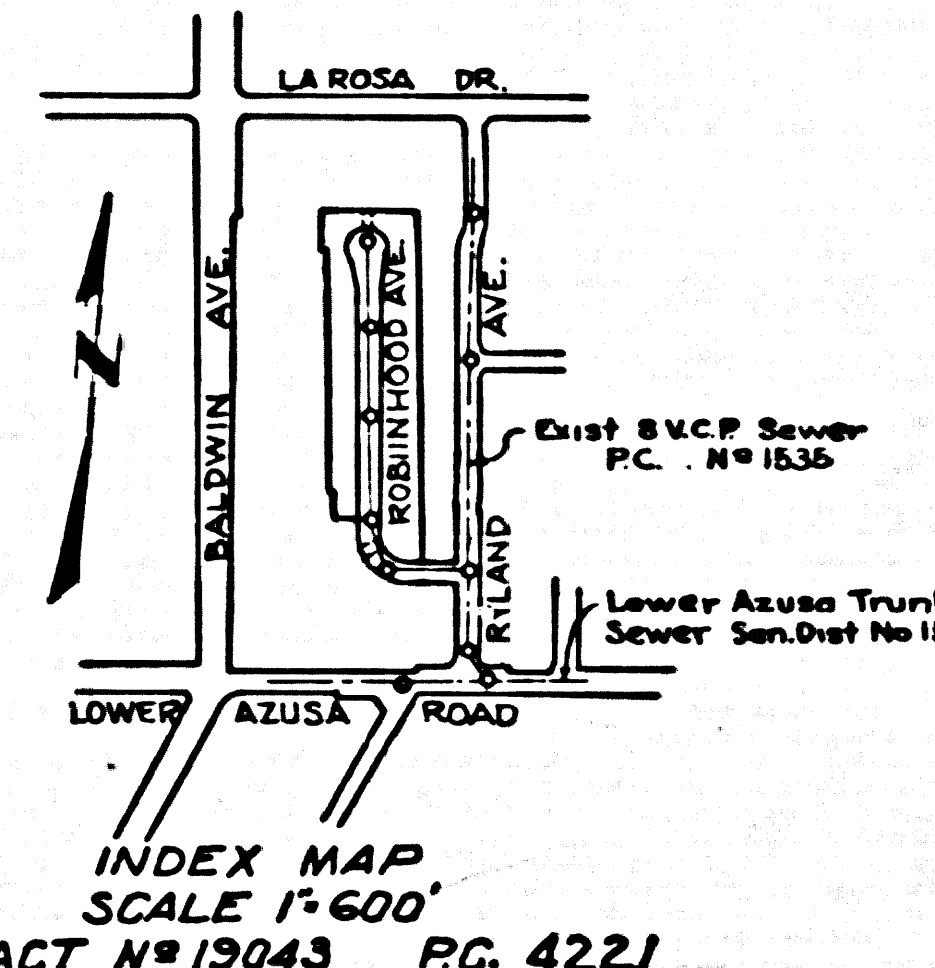
B.M. Los Angeles Co. Rd. Dept.
 L.S. 400-68 B.M. # 8E, L.F.M. N.W.
 Cor. Lower Azusa Rd. & Baldwin S. N.
 of ECR on Baldwin Ave. Elev. = 316.21

INDEX TABLE	
SHEETS	PAGES
2	3

TEMPLE CITY BLDG. DIST. NO. 5

- NOTES**
- GRADE SHEETS ON THE PROPERTY LINE OR PROPERTY LINES PRODUCED AT RIGHT ANGLES TO THE SEWER LINE AT THE CORNER AND AT EACH MANHOLE.
- NO REPRESENTATIVE OF THE COUNTY ENGINEER WILL SURVEY OR LAYOUT ANY PORTION OF THE WORK.
- THE OWNER OR HIS AUTHORIZED REPRESENTATIVE SHALL FURNISH THE COUNTY ENGINEER WITH GRADE SHEETS AND STATION FOR ALL HOUSE LATERALS AND T-BRANCHES AND SHALL PROVIDE STAKES FOR THEM AT THEIR PROPER LOCATIONS WITH SEASON-DURABLE MARKERS. ANY CHANGE IN LOCATION SHALL BE REQUESTED IN WRITING BY THE OWNER OR HIS REPRESENTATIVE.
- NO REVISIONS SHALL BE MADE IN THESE PLANS WITHOUT THE APPROVAL OF THE COUNTY ENGINEER.
- USE STANDARD MANHOLE FRAMES AND COVERS, S.A.-117, EXCEPT AS NOTED.
 - USE STANDARD STRUCTURE PIPE EXCEPT AS NOTED.
 - USE STANDARD SCHEDULE FOR ALL WITHESS CLAY PIPE JOINTS.
 - RESURFACE ALL TRUCKS WITHIN PAVED AREA TO MEET L.A. COUNTY ROAD DEPT. OR CALIF. STATE HIGHWAY DEPT. SPECIFICATIONS IN ACCORDANCE WITH PRINETS.
 - INDICATE POLE SET OF SEWER AT POINTS OF INTERFERENCE WITH POLES, S.A.-119.
 - HOUSE LATERALS TO BE CONSTRUCTED WITH INVERTS AT PROPERTY LINE, 6" PIPE BROWN CURB GRAB EXCEPT AS NOTED.
 - ALL STRUCTURES SHALL BE BRICK SEWER STRUCTURES, S.A.-184, EXCEPT AS NOTED.
 - FOR ALLOWABLE LEAKAGE TEST USE FORMULA NO. 1, S.P.C.E., SEC. 50.
 - MANHOLE TOPS IN UNIMPROVED SHORT-CUT-WAY TO BE 6" ABOVE FINISHED GRADE.
 - THE PROPERTY ENGINEER IS TO FURNISH THE HOUSE LATERAL DEPTH AT THE PROPERTY LINE BELOW THE TOP OF CURB ELEVATION FOR EACH HOUSE LATERAL ON THE GRADE SHEET.

COLLECT CHARGE
 AS INDICATED
12-13-54



PROFILE ALIGNMENT AND GRADE OF **P.C. 4221**
SANITARY SEWERS PAGE 1
 TO BE CONSTRUCTED IN
TRACT NO. 19043 (24,738)
PRIVATE CONTRACT NO. 4221
 W.S. 37
 2 SHEETS, 3 PAGES
 SCALE: HORIZ. 1"=50' VERT. 1"=5'
 NOV. 1956
 PREPARED IN THE OFFICE OF
WESTERN ENGINEERING CO.
John F. Peltier
 REG. C. E. NO. 3313
 FOR LEGEND SEE PLAN NO. S-A-64

NOTES

GRADES TO WHICH THE IMPROVEMENT IS TO BE CONSTRUCTED ARE SHOWN ON PLANS AND PROFILES. GRADE POINTS FOR TOP OF CURB, CENTER LINE OF STREET, OR CENTER LINE OF ALLEYS ARE SHOWN BY CIRCLES ON PROFILES. AT ALL POINTS BETWEEN INDICATED POINTS THE GRADE SHALL BE ESTABLISHED SO AS TO CONFORM TO A STRAIGHT LINE BETWEEN SAID INDICATED POINTS.

ALL ELEVATIONS ARE IN FEET ABOVE U.S.C. & G.S. SEA LEVEL. DATUM OF 1928.

THE BELLEVUE AND THE BELL AREAS BEING MADE A PART OF THE SPECIFICATIONS.

WORK SHALL BE CONSTRUCTED ACCORDING TO SPECIFICATIONS ON FILE IN THE OFFICE OF THE COUNTY ENGINEER AND SHALL BE INSPECTED BY THE PRESENCE OF THE COUNTY ENGINEER.

BEFORE WORK CAN BE STARTED, THE CONTRACTOR MUST OBTAIN A PERMIT TO EXCAVATE IN COUNTY STREETS FROM THE L.A. COUNTY ROAD DEPT. USE OF THIS PERMIT IS LIMITED TO THE COUNTY ENGINEER'S ROOM BY SANITARIAN ORDINANCE NO. 124. NO BROADWAY APPLICABLE TO COVER THE COST OF CONSTRUCTION INSPECTION AND SECOND PLANS.

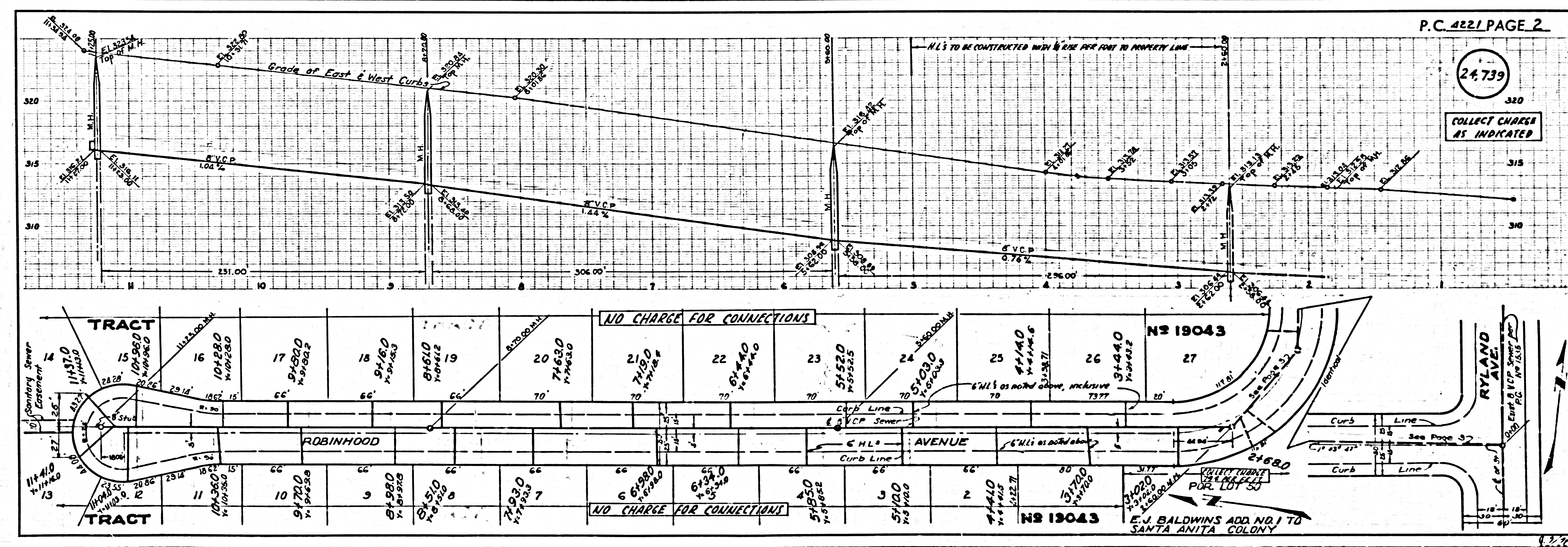
APPROVAL OF THIS PLAN BY THE COUNTY OF LOS ANGELES DOES NOT CONSTITUTE A REPRESENTATION AS TO THE ACCURACY OF THE LOCATION OF OR THE EXISTENCE OR NON-EXISTENCE OF ANY UNDERGROUND UTILITIES, PIPE, OR STRUCTURE WITHIN THE LIMITS OF THE PROJECT THE NOTE APPLIES TO ALL PAGES.

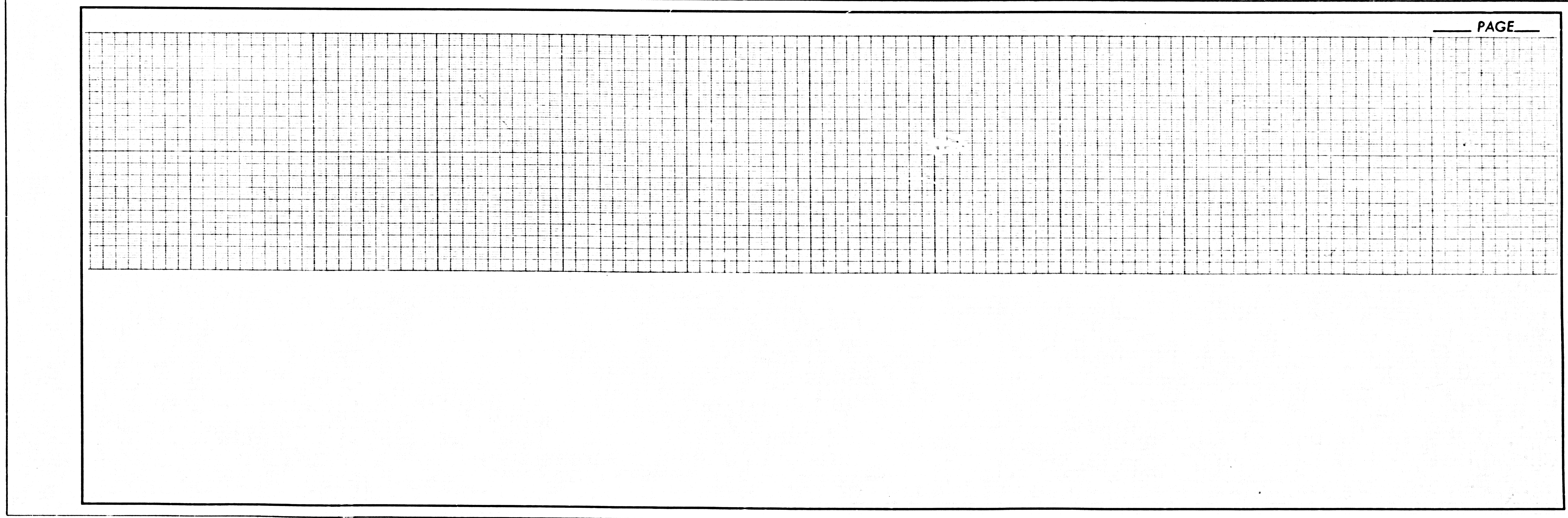
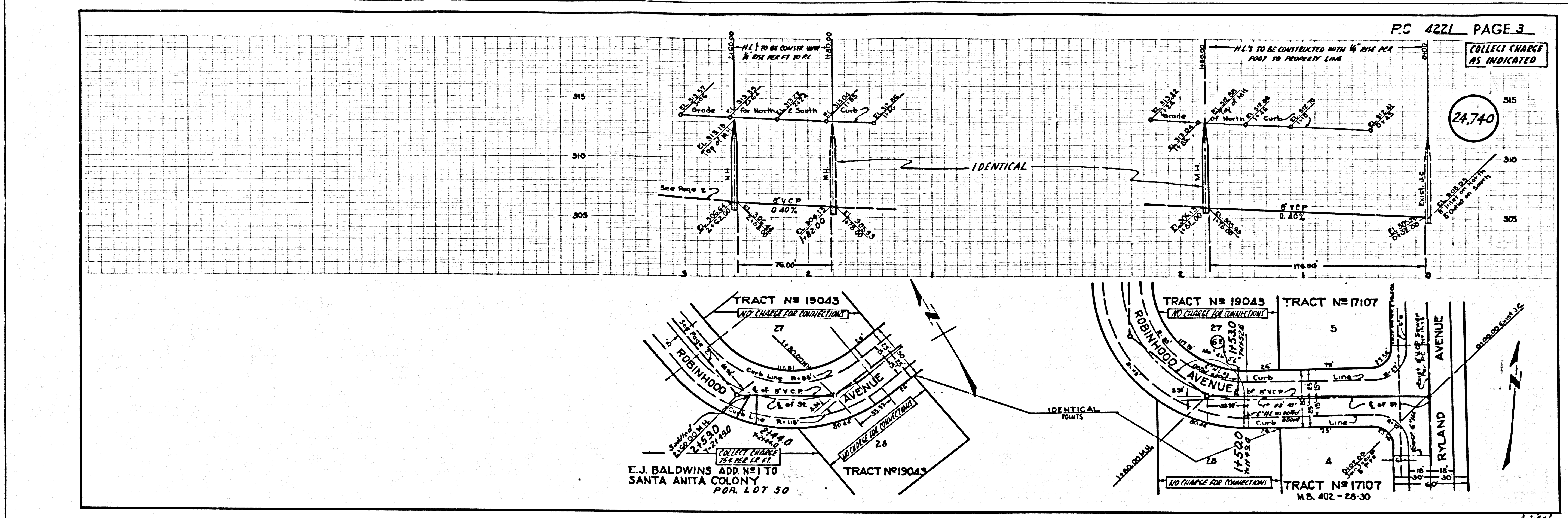
IF WORK IS TO BE DONE ON A STATE HIGHWAY, A PERMIT MUST BE OBTAINED FROM THE STATE OF CALIFORNIA, DIVISION OF HIGHWAYS, 128 SOUTH SPRING STREET.

COUNTY OF LOS ANGELES, CALIFORNIA

APPROVED, JOHN A. LAMME, COUNTY ENGINEER APPROVED, A. M. BAWAL, CHIEF ENGINEER

BY *G. Peltier* CHECKED BY *A. M. Bawal*
 12-13-54
 OFFICE OF COUNTY ENGINEER, REG. C. E. NO. 7662





D-531