

LOMITA BLDG. DIST. NO. 7.1

PROFILE ALIGNMENT AND GRADE OF
SANITARY SEWERS
TO BE CONSTRUCTED IN

TRACT No. 23409 (24,256)
(5)

PRIVATE CONTRACT NO. 4222

W.S. 28

3 SHEETS, 5 PAGES

SCALE: HORIZ. 1" = 40' VERT. 1" = 4'

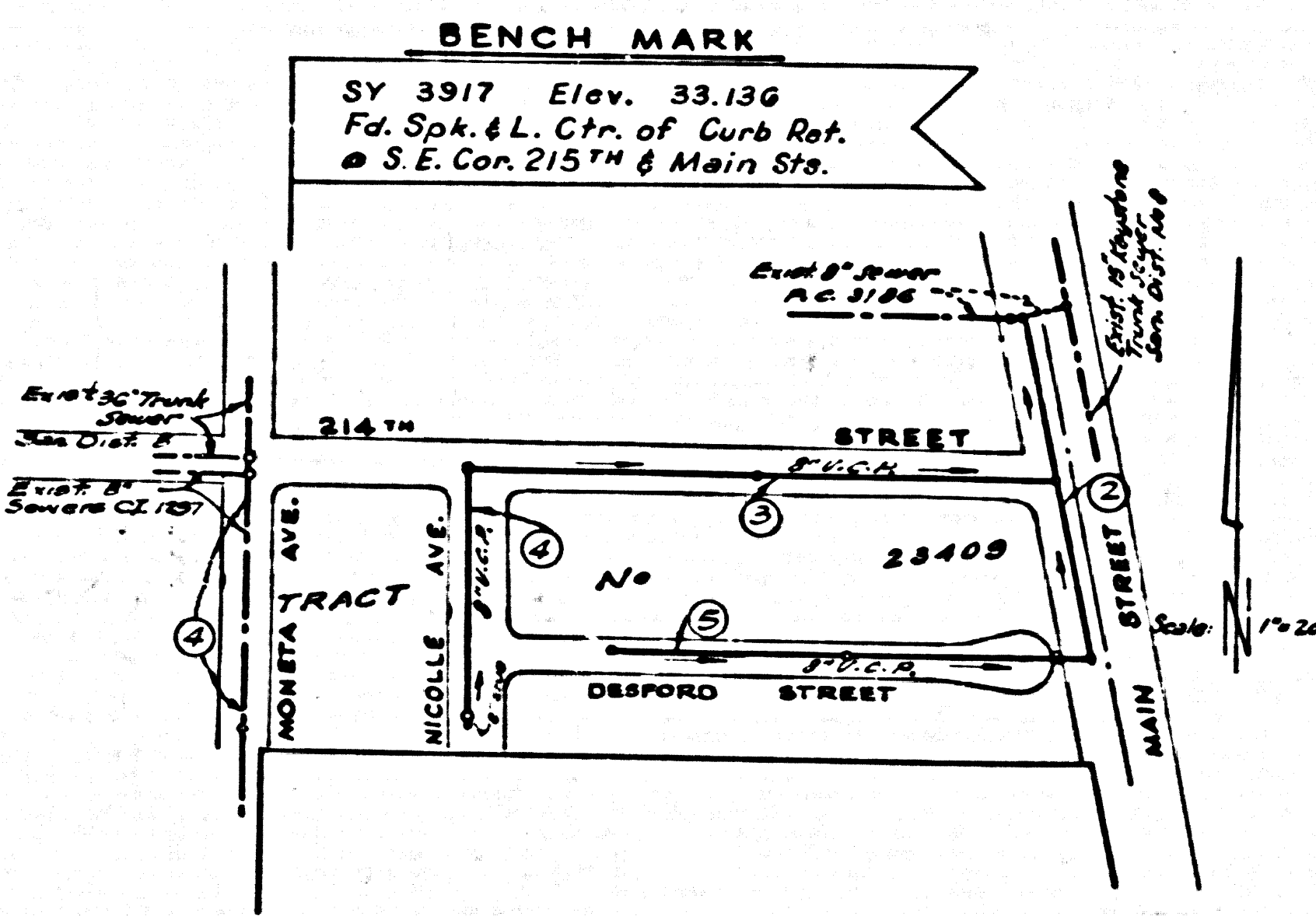
NOV. 1936

PREPARED IN THE OFFICES OF

BARCLAY ENGINEERING CO., INC.

Edward L. Pearson
REG. C.E. NO. 9765

FOR LEGEND SEE PLAN NO. S-A-64



INDEX MAP
TRACT No. 23409
P.C. 4222

- NOTES
- PROVIDE STAKES ON THE PROPERTY LINE OR PROPERTY LINES PRODUCED AT RIGHT ANGLES TO THE SEWER LINE AT THE CENTER LINE OF EACH MANHOLE.
 - NO REPRESENTATIVE OF THE COUNTY ENGINEER WILL SUFFER OR LAUDER ANY PORTION OF THE WORK.
 - THE OWNER OR HIS AUTHORIZED REPRESENTATIVE SHALL FURNISH THE COUNTY ENGINEER WITH GRADE SHEETS AND STATION FOR ALL HO. & LATERALS AND Y BRANCHES AND SHALL PROVIDE STAKES FOR THESE AT THEIR PROPER LOCATIONS WITH STATIONS AND PLAINING ANGLES, AND CHANGES IN LOCATION SHALL BE REQUESTED IN WRITING BY THE OWNER OR HIS REPRESENTATIVE.
 - NO REVISIONS SHALL BE MADE IN THESE PLANS WITHOUT THE APPROVAL OF THE COUNTY ENGINEER.
 - USE STANDARD MANHOLE FRAMES AND COVERS, S-A-117, EXCEPT AS NOTED.
 - USE STANDARD STRENGTH PIPE EXCEPT AS NOTED.
 - USE COUNTY MORTAR FOR ALL WITHIN CURB AND GUTTERS.
 - RESURFACE ALL BRANCH WITHIN PAVED AREAS TO MEET L.A. COUNTY ROAD DEPT., OR CALIF. STATE HIGHWAY DEPT. REQUIREMENTS IN ACCORDANCE WITH PERMITS.
 - INDICATE POINTS FROM WHICH ALL POINTS OF INTERSECTION WITH POLES, S-A-119.
 - HOUSE LATERALS TO BE CONSTRUCTED WITH INVERTS AS PROPERTY LINE... SEE... FOR SHOW CURB GRADE EXCEPT AS NOTED.
 - ALL STRUCTURES SHALL BE BUILT BY THE STRUCTURAL S-A-194, EXCEPT AS NOTED.
 - FOR ALLOWABLE LEAKAGE FEE SEE FORMULA NO. ON B... INVC'S, SEC. 24.
- THE INDICATION OR NUMBER OF EXISTING UTILITIES SHALL BE AS SHOWN BELIEVE THE CONTRACTOR FURNISH THE RESPONSIBILITY OF IDENTIFYING AND LOCATING SUCH UTILITIES.
- THE RIGHTS ENGINEER IS TO PROVIDE THE HOUSE LATERAL DEPTH AT THE PROPERTY LINE BELOW THE TOP OF CURB ELEVATION FOR EACH HOUSE LATERAL ON THE GRADE SHEET.

NO CHARGE
FOR CONNECTIONS
S.K. Onda 11-27

NOTE: GRADES TO WHICH THIS IMPROVEMENT IS TO BE CONSTRUCTED ARE SHOWN ON PLANS AND PROFILE GRADE POINTS FOR TOP OF CURB, CENTER LINE OF STREETS, OR CENTER LINE OF ALLEYS ARE SHOWN BY CIRCLES ON PROFILES AT ALL POINTS BETWEEN INTERSECTION POINTS THE GRADE SHALL BE ESTABLISHED TO AS TO CORRESPOND TO A LEAST-UP LINE BEHIND OTHERS SAID INDICATED POINTS.

ELEVATIONS ARE IN FEET ABOVE U.S.C. & G.S. SEA LEVEL DATUM OF 1929.

THE PLANS AND THE DATA HEREON ARE HEREBY MADE A PART OF THE SPECIFICATIONS.

WORK SHALL BE CONSTRUCTED ACCORDING TO SPECIFICATIONS ON FILE IN THE OFFICE OF THE COUNTY ENGINEER AND SHALL BE PROSECUTED ONLY IN THE PRESENCE OF THE COUNTY ENGINEER.

BEFORE WORK CAN BE STARTED THE CONTRACTOR MUST OBTAIN A PERMIT TO EXCAVATE IN COUNTY STREETS FROM THE L.A. COUNTY ROAD DEPT. IN THE CITY OF LOS ANGELES A PERMIT FROM THE COUNTY ENGINEER SHOULD BE OBTAINED BEFORE WORK IS STARTED.

THE CONTRACTOR SHALL BE RESPONSIBLE TO COVER THE COST OF CONSTRUCTION INSPECTION AND CHECK PLAN APPROVAL OF THE PLAN BY THE COUNTY OF LOS ANGELES DOES NOT CONSTITUTE A REPRESENTATION AS TO THE ACCURACY OF THE LOCATION OF OR THE EXISTENCE OR NON-EXISTENCE OF ANY UNDERGROUND UTILITY PIPE, OR STRUCTURE WITHIN THE LIMITS OF THE PROJECT THE NOTE APPLIES TO ALL PAGES.

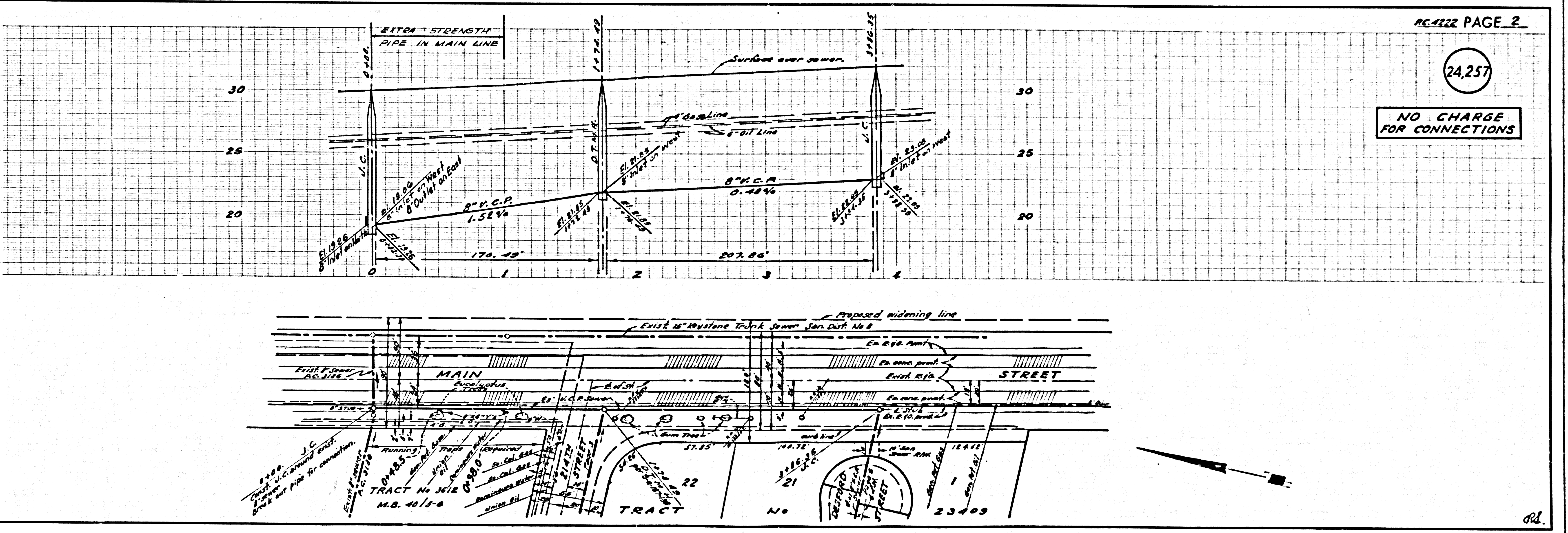
IF WORK IS TO BE DONE IN A STATE HIGHWAY, A PERMIT MUST BE OBTAINED FROM THE STATE OF CALIFORNIA, DIVISION OF HIGHWAYS, 128 SOUTH MAIN STREET.

COUNTY OF LOS ANGELES, CALIFORNIA

APPROVED, JOHN A. LAMBE, COUNTY ENGINEER APPROVED, A. H. BAWN, CHIEF ENGINEER

BY *[Signature]* BY *[Signature]*
SANITARY ENGINEER OFFICE ENGINEER

CHECKED BY *[Signature]* 11-27-36
OFFICE OF COUNTY ENGINEER, 128 S. E. NO. 34-66



P.C. 4222 PAGE 2

(24,257)

NO CHARGE
FOR CONNECTIONS

TRACT No. 23409

