

TEMPLE CITY BLDG. DIST. NO. 5

PROFILE ALIGNMENT AND GRADE OF P.C. 4229  
 SANITARY SEWERS PAGE 1  
 TO BE CONSTRUCTED IN

TRACT NO. 22321 (24,299)

PRIVATE CONTRACT NO. 4229 (2)

W.S. 44

1 SHEET, 2 PAGES

SCALE: 1" = 10' SEPTEMBER, 1956

PREPARED BY THE OFFICES OF  
 TREADWELL ENGINEERING CORPORATION

By W. G. Treadwell, INC. C. E. NO. 410

FOR LEGEND SEE PLAN NO. S-A-64

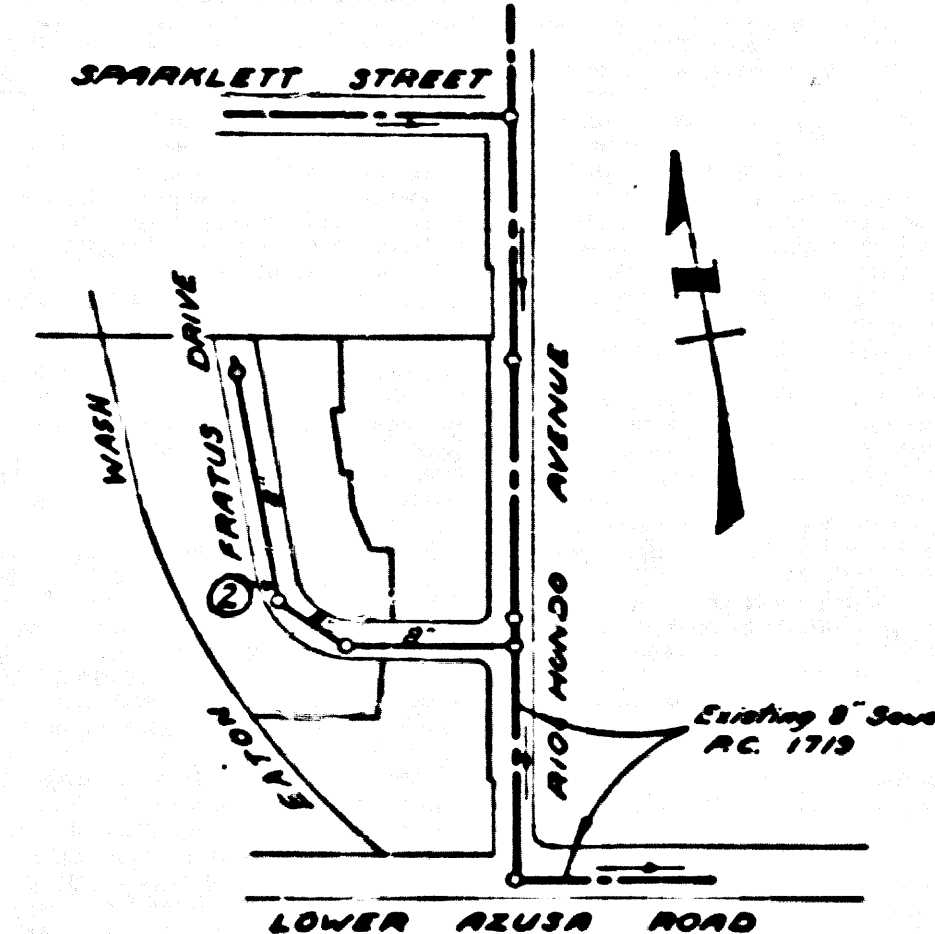
NOTE: GRADES TO WHICH THIS IMPROVEMENT IS TO BE CONSTRUCTED ARE SHOWN ON PLANS AND PROFILE GRADE POINTS FOR TOP OF CURB, CENTER LINE OF STREET, OR CENTER LINE OF ALLEY ARE SHOWN BY CIRCLES ON PROFILES AT ALL POINTS BETWEEN DESIGNATED POINTS THE GRADE SHALL BE ESTABLISHED SO AS TO CONFORM TO A STRAIGHT LINE BETWEEN SAID DESIGNATED POINTS. ELEVATIONS ARE IN FEET ABOVE M.S.L. SEE PLAN S-A-64, SECTION 17.12.19. THE PROFILES AND THE DATA HEREON ARE HEREBY MADE A PART OF THE SPECIFICATIONS. WORK SHALL BE CONSTRUCTED ACCORDING TO SPECIFICATIONS ON FILE IN THE OFFICE OF THE COUNTY ENGINEER AND SHALL BE INSPECTED ONLY BY THE PRESENCE OF THE COUNTY ENGINEER. BEFORE WORK CAN BE STARTED, THE CONTRACTOR MUST OBTAIN A PERMIT TO EXCAVATE IN COUNTY DISTRICT FROM THE COUNTY LOCAL DISTRICT ENGINEER AND SHALL COMPLY WITH THE COUNTY ENGINEER, LOCAL DISTRICT ENGINEER AND SANITARY ENGINEER'S ORDINANCES TO COVER THE COST OF CONSTRUCTION INSPECTION AND RECORD DRAWINGS. APPROVAL OF THIS PLAN BY THE COUNTY OF LOS ANGELES DOES NOT CONSTITUTE A REPRESENTATION AS TO THE ACCURACY OF THE INFORMATION OR THE EXISTENCE OF ANY UNDERGROUND UTILITY LINE OR STRUCTURE WITHIN THE LIMITS OF THIS PROJECT. THIS NOTE APPLIES TO ALL PAGES. IF WORK IS TO BE DONE IN A STATE HIGHWAY, A PERMIT MUST BE OBTAINED FROM THE STATE OF CALIFORNIA, DIVISION OF HIGHWAYS, 138 SOUTH SPRING STREET.

COUNTY OF LOS ANGELES, CALIFORNIA  
 APPROVED, JOHN A. LAMBE, COUNTY ENGINEER APPROVED, A. M. BAYAL, CHIEF ENGINEER  
 BY *A. P. Adams* SANITATION ENGINEER BY *A. M. Bayal* CHIEF ENGINEER  
 CHECKED BY *R. K. ...* OFFICE OF COUNTY ENGINEER, INC. C. E. NO. 7860

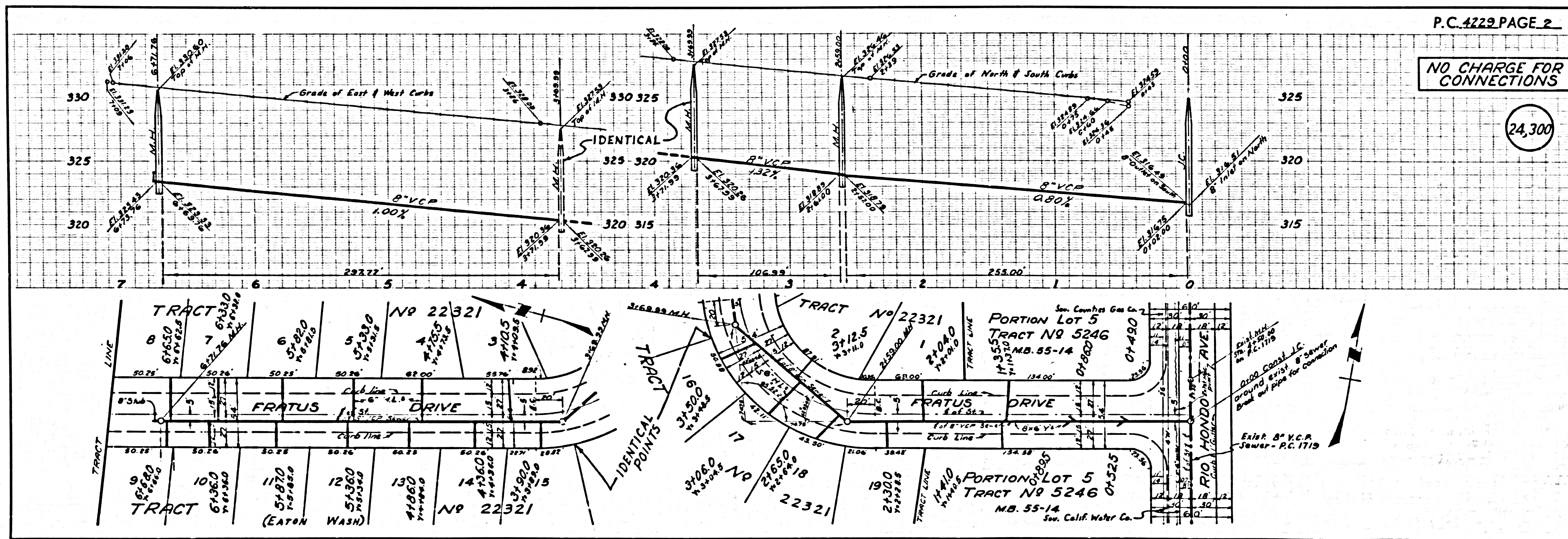
BENCH MARK  
 Lower Azusa Rd. and Encinita Ave., intersection.  
 Set in a well protected by a cast iron cover marked  
 "County Surveyor Monument" # 874 C.S. man.  
 marked, "R.E. 529" set in concrete 8" below surface  
 R.B. 1393-9 1953 Adj. Elev. 61,322.249

INDEX TABLE	
SHEET	PAGES
1	2

NO CHARGE FOR CONNECTIONS  
*S. K. ... 1-2-57*



INDEX MAP  
 TRACT NO. 22321  
 SCALE 1" = 300'  
 P.C. 4219



NO CHARGE FOR CONNECTIONS

(24,300)

P.C. 4229 PAGE 2