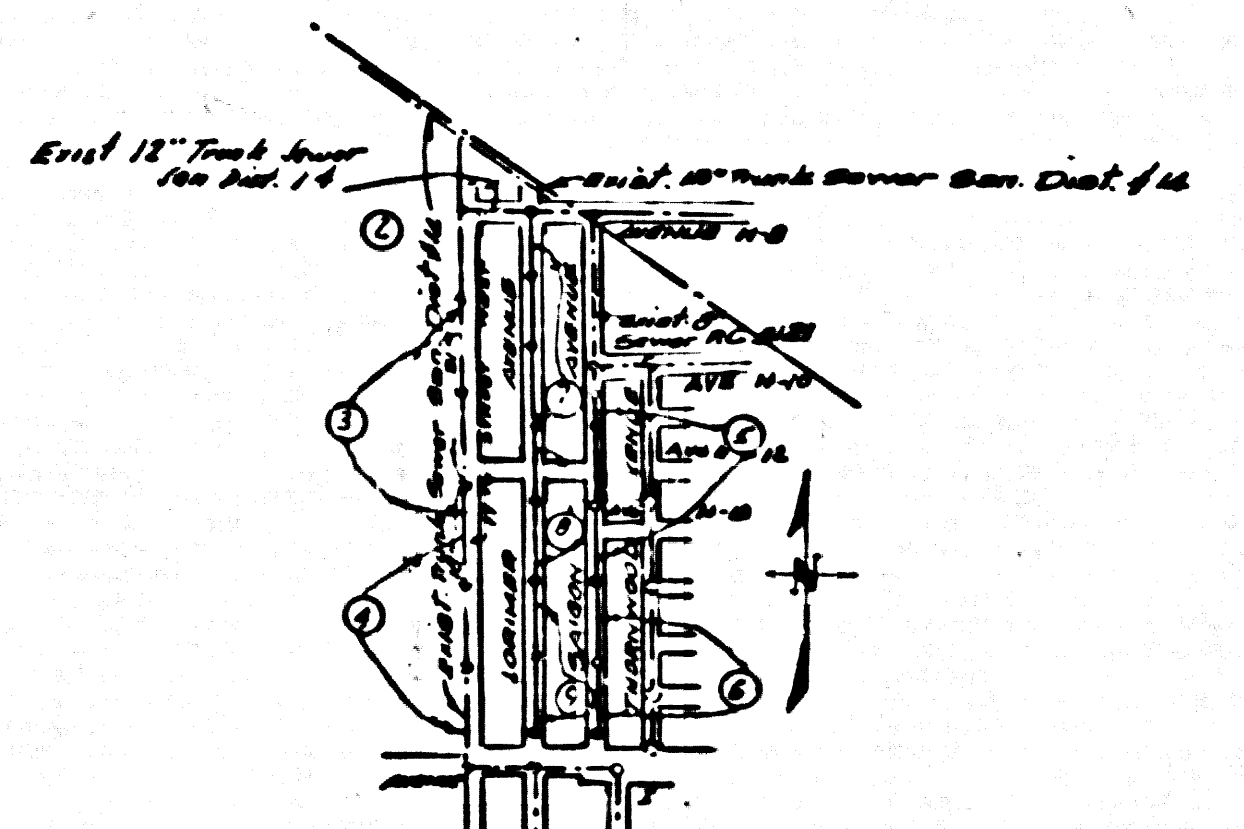


B.M. 31.71  
 4.7' SE. Corner of Sec. 7, 8th St. West  
 18' E. of B.C.R. E. end of C.B. Spring  
 Station 0.127 from station 10 of L.A. R.R.  
 1/4 mi.



INDEX MAP  
 SCALE: 1"=100'  
 P.C. 4234  
 TRACT NO. 20845

**LANCASTER BLDG. DIST. NO. 8**

- NOTES**
- PROVIDE SEWER ON THE PROPERTY LINE OR PROPERTY LINE PROLONGED AT RIGHT ANGLES TO THE SEWER LINE AT THE CORNER OR END OF EACH PARCEL.
  - NO IMPROVEMENTS OF THE COUNTY ENGINEER SHALL BE MADE ON LATERAL AND HOUSE LATERALS.
  - THE OWNER OR HIS AUTHORIZED REPRESENTATIVE SHALL FURNISH THE COUNTY ENGINEER WITH SEWER SHEETS AND STATION FOR ALL HOUSE LATERALS AND HOUSE LATERALS AND SHALL PROVIDE STAKES FOR THEM AT THEIR PROPER LOCATIONS WITH STATIONING. THE PLUMBING SEWER AND CHANGES IN LOCATION SHALL BE INDICATED BY WORDING BY THE OWNER OR HIS REPRESENTATIVE. NO SEWERAGE SHALL BE MADE IN THESE PLANS WITHOUT THE APPROVAL OF THE COUNTY ENGINEER.
  - USE STANDARD SANITARY PIPES AND COVERS, 8-1/2" I.D., EXCEPT AS NOTED.
  - USE CHAMBER SEWER FOR ALL VENTED CLAY PIPE JOINTS.
  - INDICATE ALL TRENCH WIDTHS NEARER LINES TO HIGHWAY OR COUNTY ROAD DEPT., OR CALIF. STATE HIGHWAY DEPT. SHOWING DEPTH IN ACCORDANCE WITH PLANS.
  - INDICATE FOUR FEET OF SEWER AT POINTS OF INTERFERENCE WITH FOLDS, 8-1/2" I.D.
  - HOUSE LATERALS TO BE CONSTRUCTED WITH SEWER AS PROPERTY LINE, 6" I.D. PIPE SHOW CURB GRADE EXCEPT AS NOTED.
  - ALL STRUCTURES SHALL BE BUILT UPON FOUNDATIONS, 8-1/2" I.D. EXCEPT AS NOTED.
  - FOR ALTERNATE SEWERAGE USE SEE FOUNDATION NO. 1, 2, 3, 4, 5, 6, 7, 8, 9, 10, 11, 12, 13, 14, 15, 16, 17, 18, 19, 20, 21, 22, 23, 24, 25, 26, 27, 28, 29, 30, 31, 32, 33, 34, 35, 36, 37, 38, 39, 40, 41, 42, 43, 44, 45, 46, 47, 48, 49, 50, 51, 52, 53, 54, 55, 56, 57, 58, 59, 60, 61, 62, 63, 64, 65, 66, 67, 68, 69, 70, 71, 72, 73, 74, 75, 76, 77, 78, 79, 80, 81, 82, 83, 84, 85, 86, 87, 88, 89, 90, 91, 92, 93, 94, 95, 96, 97, 98, 99, 100.
  - INDICATE TOP OF UNIMPROVED DRIVE OR WAY TO BE 4" ABOVE FINISH GRADE.
  - The private Engineer is to furnish the House Lateral depth of the property line below the top of curb elevation for each house lateral on this grade sheet.
  - Set all pipe joints with a cement mortar that are within 20' of all property lines as in San. Sewer Plan.

NO CHARGE FOR CONNECTIONS

PROFILE ALIGNMENT AND GRADE OF P.C. 4234  
 SANITARY SEWERS PAGE 1  
 TO BE CONSTRUCTED IN  
 TRACT NO. 20845 (24483)

PRIVATE CONTRACT NO. 4234  
 W.S. 71  
 5 SHEETS, 9 PAGES  
 SCALE: 1"=10' DEC. 1956  
 PREPARED IN THE OFFICES OF  
 RALPH B. MURPHY  
 REG. C. E. NO. 8380  
 FOR LEGEND SEE PLAN NO. S-A-64

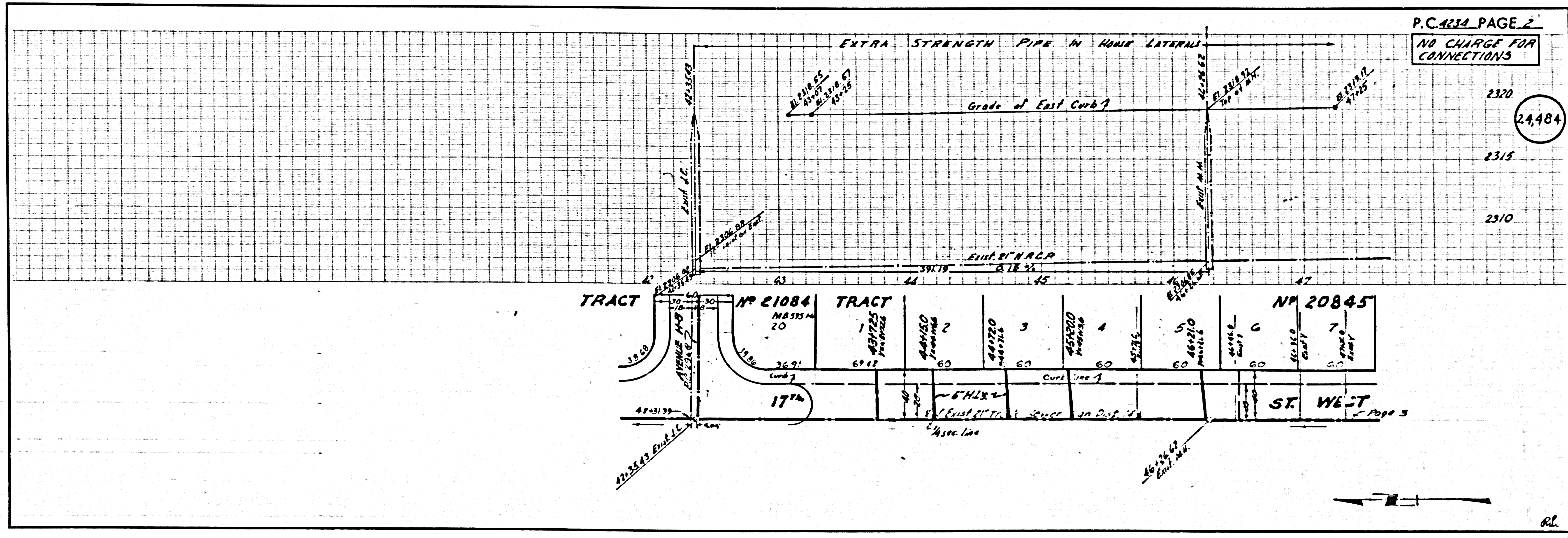
**NOTES**

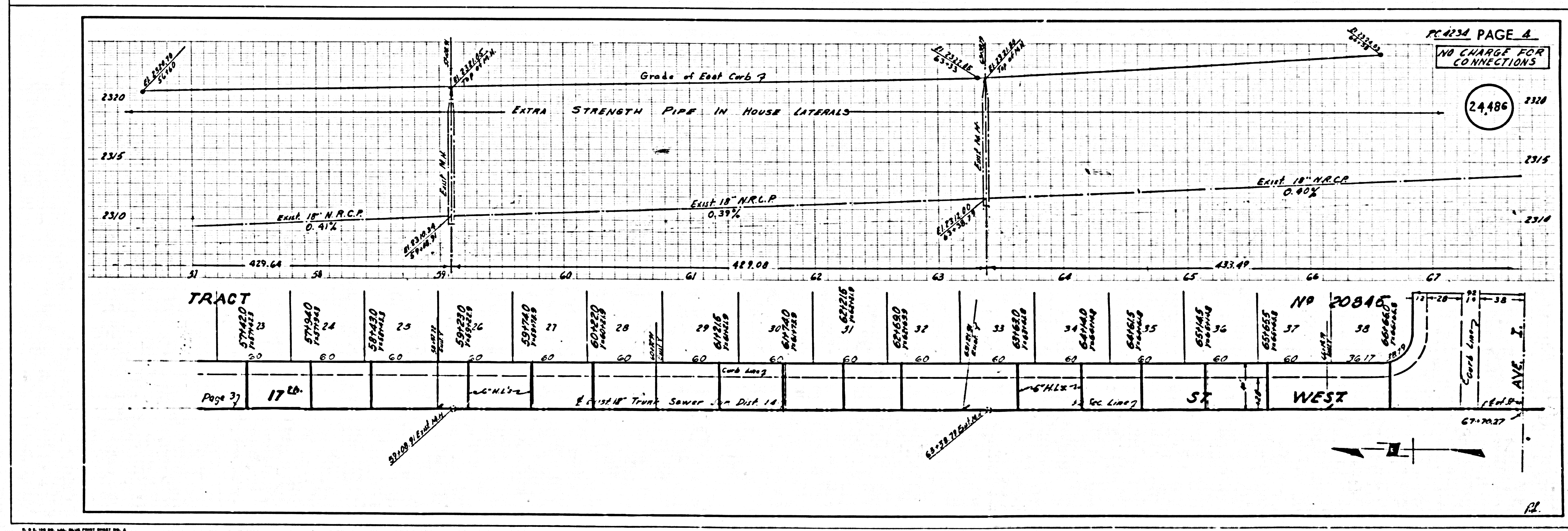
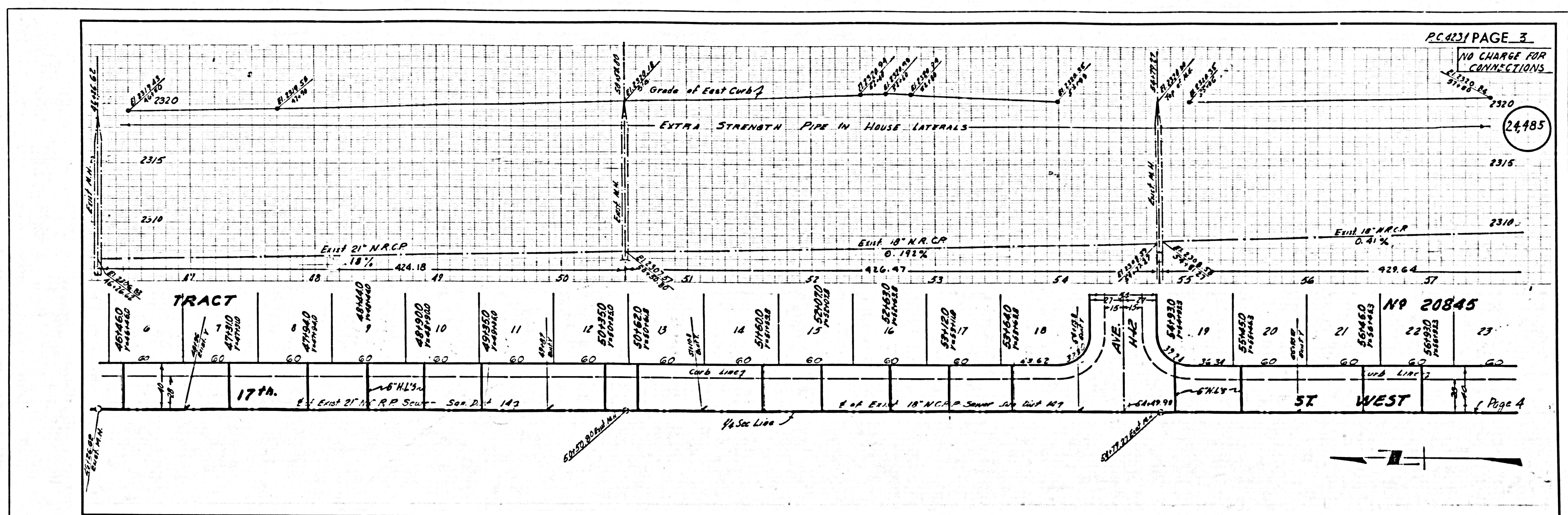
GRADE TO WHICH THE IMPROVEMENT IS TO BE CONSTRUCTED ARE SHOWN ON PLANS AND PROFILES. GRADE POINTS FOR TOP OF CURB, CENTER LINE OF STREETS, OR CENTER LINE OF ALLEYS ARE SHOWN BY CIRCLES ON PROFILES. AT ALL POINTS BETWEEN REGULARLY SPACED POINTS THE GRADE SHALL BE ESTABLISHED SO AS TO CONFORM TO A STRAIGHT LINE DRAWN BETWEEN SAID SPACED POINTS.

SEWERAGE AND THE EXTRA SECTION AND SEWERAGE SHALL BE THE PROPERTY OF THE COUNTY ENGINEER AND SHALL BE PROVIDED ONLY IN THE PRESENCE OF THE COUNTY ENGINEER. A HOUSE LATERAL FROM THE COUNTY ENGINEER SHALL BE PROVIDED ONLY IN THE PRESENCE OF THE COUNTY ENGINEER. A HOUSE LATERAL FROM THE COUNTY ENGINEER SHALL BE PROVIDED ONLY IN THE PRESENCE OF THE COUNTY ENGINEER. A HOUSE LATERAL FROM THE COUNTY ENGINEER SHALL BE PROVIDED ONLY IN THE PRESENCE OF THE COUNTY ENGINEER.

COUNTY OF LOS ANGELES, CALIFORNIA  
 APPROVED: JOHN A. LAMBE, COUNTY ENGINEER  
 APPROVED: A. H. BAYNE, CHIEF ENGINEER  
 BY: R. P. Collins, SANITATION ENGINEER  
 BY: J. P. Williams, CHIEF ENGINEER  
 CHECKED BY: P. P. Kuhn, 12-24-56  
 OFFICE OF COUNTY ENGINEER, REG. C. E. NO. 7860

P.C. 4234  
 TRACT NO. 20845





PC 4234  
TRACT No 50842

