

LOMITA BLDG. DIST. NO. 71

PROFILE ALIGNMENT AND GRADE OF P.C. 4241
SANITARY SEWERS PAGE 1
TO BE CONSTRUCTED IN

TRACT NO. 23121 25156

PRIVATE CONTRACT NO. 4241

W.S. 28

2 SHEETS, 4 PAGES

SCALE: 1" = 40' NOVEMBER, 1956

PREPARED BY THE OFFICES OF

NATIONAL ENGINEERING CO.

BY *Elmer J. ...*

REG. E. & NO. 2241

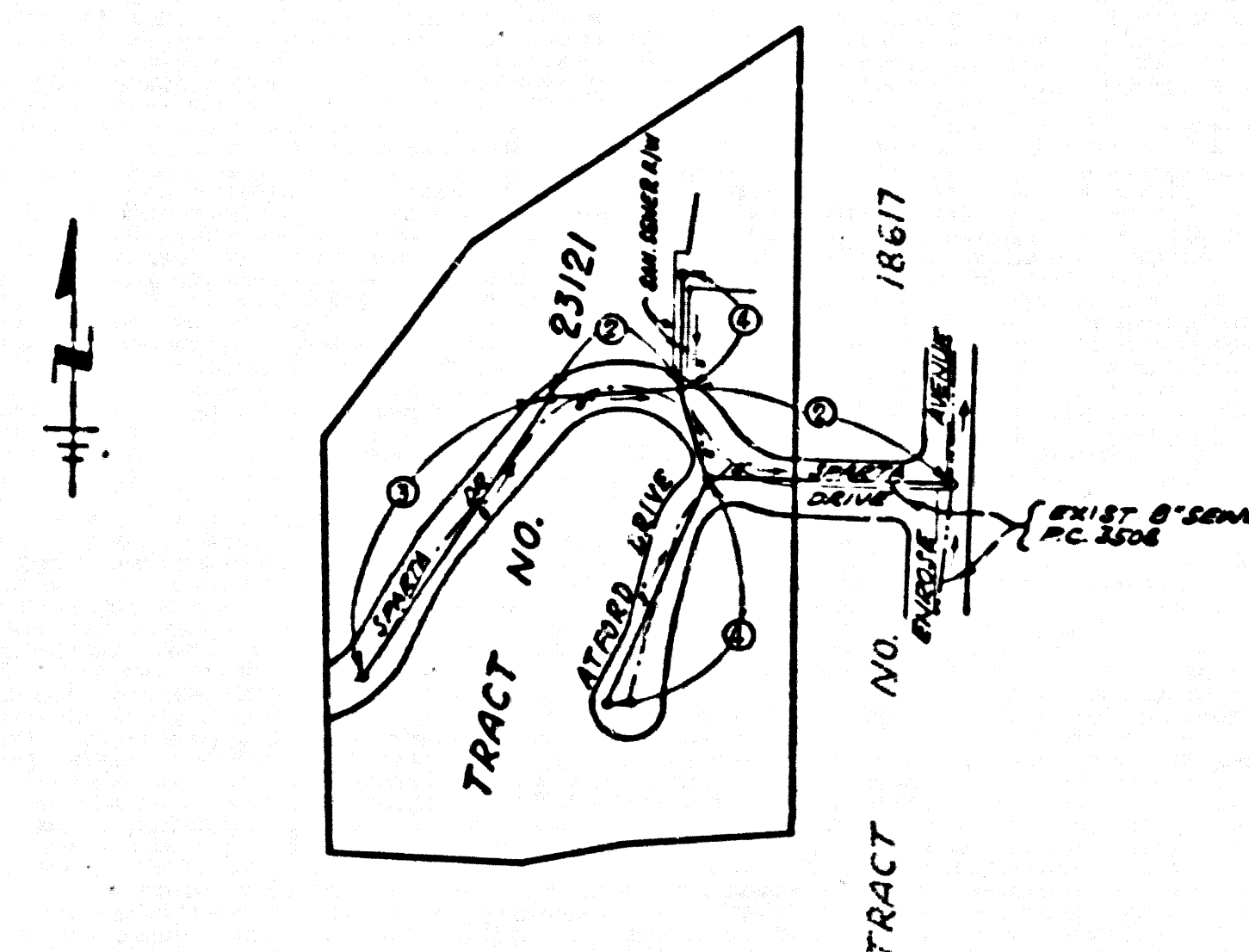
FOR LEGEND SEE PLAN NO. S-A-64

NOTES:
GRADE TO WHICH THIS IMPROVEMENT IS TO BE CONSTRUCTED AND SHOWN ON PLANS AND PROFILE GRADE POINTS FOR TOP OF CURB, CENTER LINE OF STREETS, OR CENTER LINE OF ALLEYS ARE SHOWN BY CIRCLES ON PROFILES AT ALL POINTS BETWEEN RECORDED POINTS THE GRADE SHALL BE ESTABLISHED SO AS TO CONFORM TO A STRAIGHT LINE BETWEEN SAID RECORDED POINTS.
ELEVATIONS ARE IN FEET ABOVE U.S.C. & G.S. MEAN SEA LEVEL BY 1929.
REVISIONS AND THE DATA HEREON ARE HEREBY MADE A PART OF THE SPECIFICATIONS.
WORK SHALL BE CONSTRUCTED ACCORDING TO SPECIFICATIONS ON FILE IN THE OFFICE OF THE COUNTY ENGINEER AND SHALL BE SUBJECT TO INSPECTION BY THE COUNTY ENGINEER.
BEFORE WORK CAN BE STARTED THE CONTRACTOR MUST OBTAIN A PERMIT TO EXCAVATE BY COUNTY ENGINEER FROM THE COUNTY ENGINEER'S OFFICE IN THE CITY OF LOS ANGELES. THE COUNTY ENGINEER'S OFFICE IS LOCATED AT THE COUNTY ENGINEER'S OFFICE, 215 N. HOUSTON STREET, LOS ANGELES, CALIFORNIA.
APPROVAL OF THIS PLAN BY THE COUNTY OF LOS ANGELES DOES NOT CONSTITUTE A REPRESENTATION AS TO THE ACCURACY OF THE LOCATION OF OR THE EXISTENCE OR NON-EXISTENCE OF ANY UNDERGROUND UTILITIES OR STRUCTURES WITHIN THE LIMITS OF THIS PROJECT. THE USER HEREBY WAIVES ALL RIGHTS TO RECOVERY FROM THE COUNTY OF LOS ANGELES FOR ANY DAMAGE TO HIS PROPERTY OR PERSONS OR TO HIS BUSINESS OR TO HIS REPUTATION WHICH MAY BE CAUSED BY THE CONSTRUCTION OF THIS PROJECT.
IF WORK IS TO BE DONE IN A STATE HIGHWAY, A PERMIT MUST BE OBTAINED FROM THE STATE OF CALIFORNIA, DEPARTMENT OF HIGHWAYS, 120 SOUTH BRIDGE STREET.

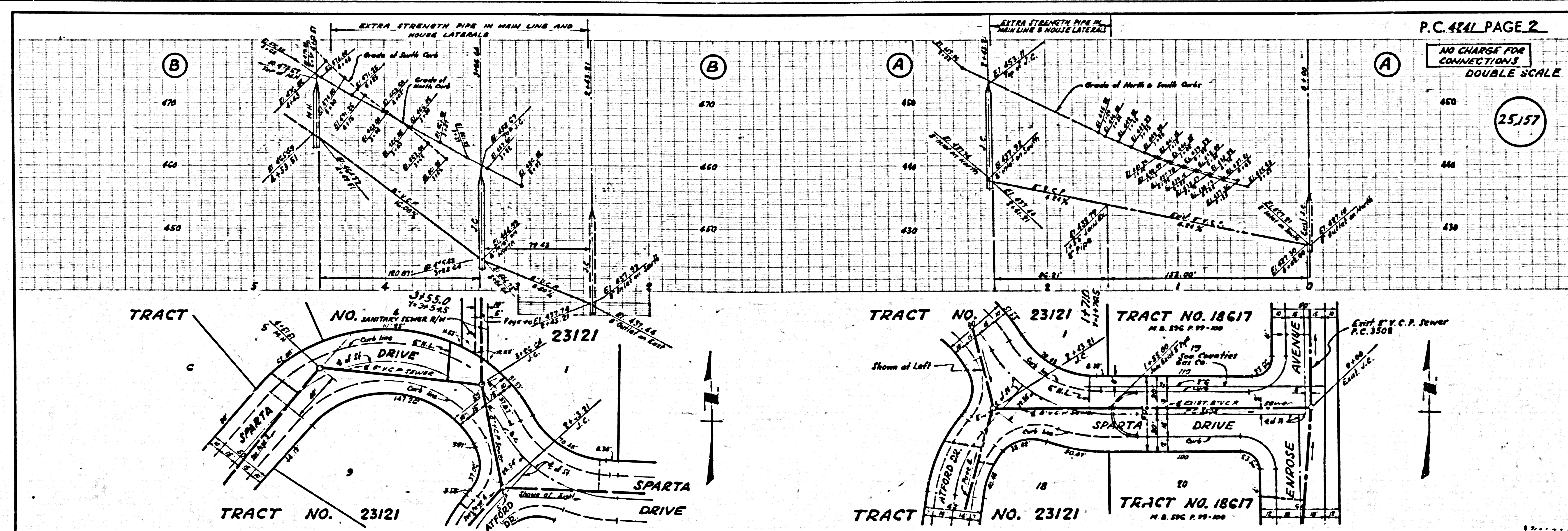
II. NOTE:
THE CONTRACTOR SHALL NOTIFY THE CONSTRUCTION AND STORM DRAIN DIVISION BY TELEPHONE, HADISON 9-4347, EXT. 302, AT LEAST 24 HOURS BEFORE STARTING ANY WORK UNDER THIS CONTRACT.

BENCH MARK:
Los Angeles County Surveyors B. M. 25-C.F.B. 1536 P. 12
San Pedro, an approx. 1/2 of Western Ave. about 96 FT. N. of Channel Drive at painted perforation cross walk at 1/4" Manzanita bar set in concrete 8" below the surface and perforated by a steel iron screw threaded "City L.A. Manufacturing Engineering" with "S.P.N.R.C.B." painted on pavement 1953 Adj. Elev. 297.101

NO CHARGE FOR CONNECTIONS
Elmer J. ...



NOTE: FIGURES IN CIRCLES INDICATE PAGE NUMBERS



D-4311

