

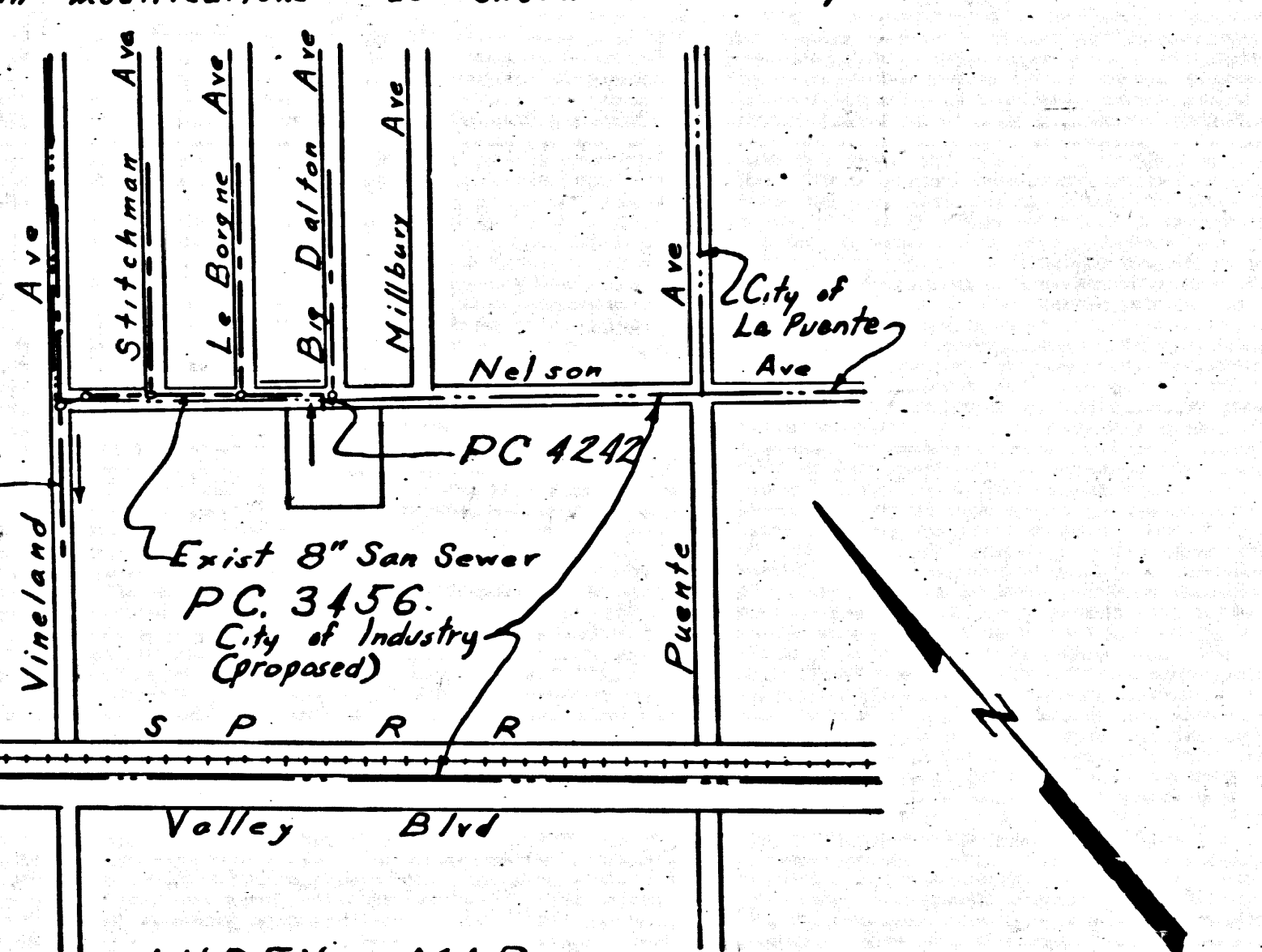
NO CHARGE FOR CONNECTION  
 Ref. 12-12-56

BM No 12-1 Elev. 291.926 CEFB Ref 1379 pg. 6  
 E intersection of Valley Blvd and Vineland Ave.  
 4 inch Brass Cap in Std Man Box

**NOTE: PUENTE BUILDING DISTRICT NO. 2**

Provide stakes on the property lines or property lines produced at right angles to the sewer line at the center line of each manhole.  
 No representative of the County Engineer will survey or layout any portion of the work.  
 The owner or his authorized representative shall furnish the County Engineer with grade sheets and stations for all house laterals and Y branches and shall provide stakes for them at their proper locations with stationing plainly marked. Any change in location shall be requested in writing by the owner or his representative.  
 No revisions shall be made in these plans without the approval of the County Engineer.

1. Use cast iron pipe per Specs Sec. 10
2. Use oakum and lead joints per Specs, Sec 3B & 1B
3. Resurface all trench within paved area to meet L.A. County Road Dept.
4. Encase four feet of sewer at points of interference with poles, S-a-119
5. Top of proposed 6" C.I.P. Cleanout to be constructed similar to S-a-115 with 6" frame and cover. Encase entire frame with cement concrete 4" all around.
6. The 6" C.I.P. house lateral is to be constructed per S-a-124 with modifications as shown on this plan.



PROFILE, ALIGNMENT AND GRADE OF **P.C. 4242**  
**SEWER HOUSE LATERAL PAGE 1**  
 TO BE CONSTRUCTED  
**CROSSING**  
**NELSON AVENUE (24,186)**

PRIVATE CONTRACT NO. **4242**  
 W. S. 46  
 1 SHEET, 1 PAGE  
 Scale: VERT. 1"=40' NOV. 1956  
 PREPARED IN THE OFFICES OF  
**CAL ENGINEERS**

*Russell G. Ludwig*  
 Reg. C.E. No. 6953  
 FOR LEGEND SEE PLAN NO. S-a-64

**NOTE:**  
 Grades to which this improvement is to be constructed are shown on plans and profiles. Grade points for top of curbs, center line of streets, or center line of alleys are shown by circles on profile. At all points between designated points the grade shall be established so as to conform to a straight line drawn between said designated points.  
 Elevations are in feet above U.S.C.G.S. See Level Datum of 1929  
 This drawing and the data hereon are hereby made a part of the specifications.  
 Work shall be constructed according to specifications on file in the office of the County Engineer and shall be prosecuted only in the presence of the County Engineer.  
 Before work can be started, the contractor must obtain a permit to excavate in County streets from the L.A. County Road Dept., 108 W. 2nd St. and make a deposit with the County Engineer, Room 324, 253 South Broadway, sufficient to cover the cost of construction inspection and record plans.  
 Approval of this plan by the County of Los Angeles does not constitute a representation as to the accuracy of the location of or the existence or non-existence of any underground utility, pipe, or structure within the limits of this project. This note applies to all sheets.  
 If work is to be done in a State Highway, a permit must be obtained from the State of California, Division of Highways, 120 South Spring Street.

**COUNTY OF LOS ANGELES, CALIFORNIA**  
 Approved, John A. Lambie, County Engineer  
*A. D. Collins*  
 Sanitation Engineer  
 Checked by *R. P. Kuhn* 12-17-56  
 Office of County Engineer, Reg. C.E. No. 7860