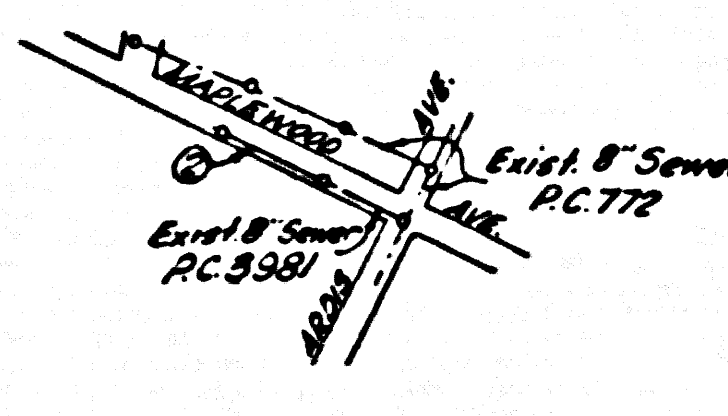


B.M. SY 2137 E.L. 84.681
L&T. in W. Co. of Ards Ave ± 5%
of C.P. @ N.W. Cor. Ards & Maplewood Ave.

BELFLOWER BLDG. DIST. NO. 4

- NOTE:
PROVIDE GRADES ON THE PROPERTY LINE OR PROPERTY LINES PRODUCED AT RIGHT ANGLES TO THE SEWER LINE AT THE CENTER
LINE OF EACH ALLEYS.
NO REPRESENTATIVE OF THE COUNTY ENGINEER SHALL SURVEY OR LAY OUT ANY PORTION OF THE WORK.
THE OWNER OR HIS AUTHORIZED REPRESENTATIVE SHALL FURNISH THE COUNTY ENGINEER WITH GROUND SHEETS AND STATION
FOR ALL HOUSE LATERALS AND Y BRANCHES AND SHALL PROVIDE STAKES FOR THEM AT THEIR PROPER LOCATIONS WITH STATION-
ING PLACING MARKS. ANY CHANGE IN LOCATION SHALL BE REQUESTED BY WRITING BY THE OWNER OR HIS REPRESENTATIVE.
NO REVISIONS SHALL BE MADE IN THESE PLANS WITHOUT THE APPROVAL OF THE COUNTY ENGINEER.
1. USE STANDARD MANHOLE FRAMES AND COVERS, S-A-117, EXCEPT AS NOTED.
2. USE STANDARD STRENGTH PIPE EXCEPT AS NOTED.
3. USE CHIMNEY ROOSTERS FOR ALL VENTING CLAY PIPE JOISTS.
4. MAINTAIN ALL TRENCH WIDTHS PAVED AREA TO MEET L. A. COUNTY ROAD DEPT., OR CALIF. STATE HIGHWAY DEPT. REQUIRE-
MENTS IN ACCORDANCE WITH PRESENTS.
5. INDICATE FOUR FEET OF SEWER AT POINTS OF INTERFERENCE WITH POLES, S-A-119.
6. HOUSE LATERALS TO BE CONSTRUCTED WITH SEWER AT PROPERTY LINE. E... PIPE SHOW CURB GRADE EXCEPT AS NOTED.
7. ALL STRUCTURES SHALL BE BRICK SEWER STRUCTURES, S-A-104, EXCEPT AS NOTED.
8. FOR ALLOWABLE SAGS USE THE FORMULA NO. 1... SPEC'S, SEC. 16.
9. MANHOLE TOPS IN UNIMPROVED RIGHTS-OF-WAY TO BE 6" ABOVE FINISHED GRADE.
10. The Private Engineer is to furnish the House Lateral depth at the property line
below the top of curb elevation for each House Lateral on the Grade Sheet.

PROFILE ALIGNMENT AND GRADE OF P.C. 4246
SANITARY SEWERS PAGE 1
TO BE CONSTRUCTED IN
MAPLEWOOD AVE. (24,087)
(2)
PRIVATE CONTRACT NO. 4246
W.S. 93
1 SHEET OF 2 PAGES
SCALE: HORIZ. 1" = 40' VERT. 1" = 4' DEC. 1956
PREPARED IN THE OFFICES OF
OLSON SURVEYING SERVICE
BY Samuel H. Olson
S.E. NO. 7212
FOR LEGEND SEE PLAN NO. S-A-64



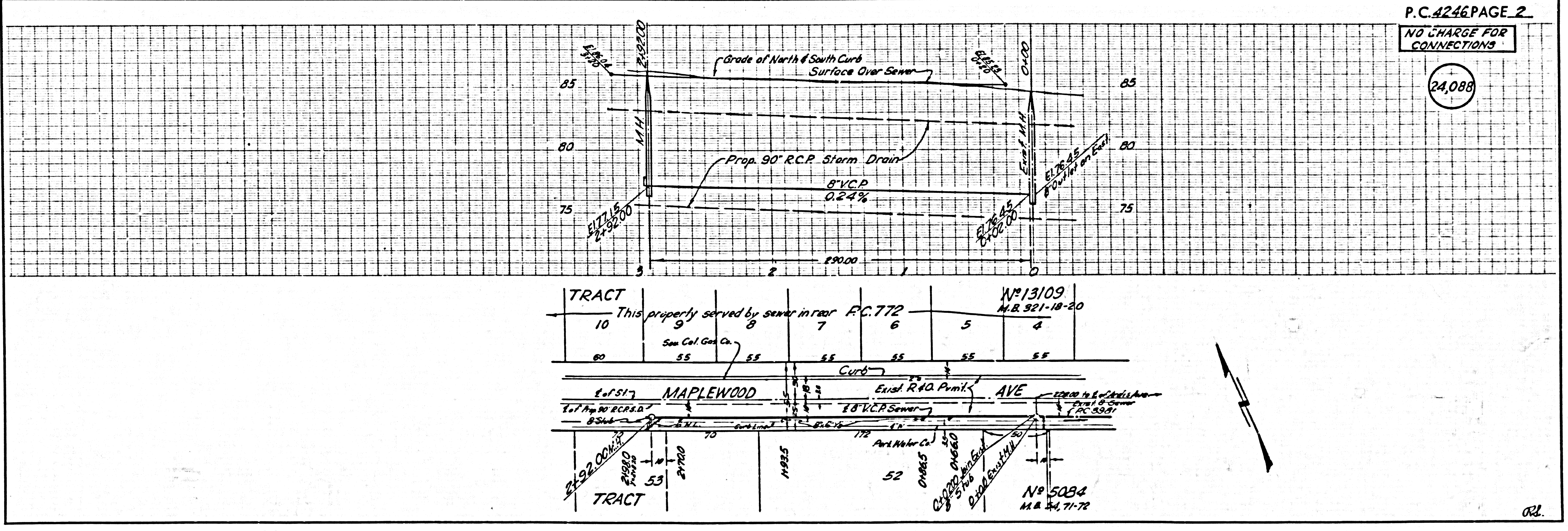
INDEX MAP
P.C. 4246
SCALE: 1" = 100'

NO CHARGE FOR
CONNECTIONS
2-2-57

NOTE:
GRADES TO WHICH THIS IMPROVEMENT IS TO BE CONSTRUCTED ARE SHOWN ON PLANS AND PROFILE GRADE POINTS FOR
TOP OF CURB, CENTER LINE OF STREET, OR CENTER LINE OF ALLEYS ARE SHOWN BY CIRCLES ON PROFILES AT ALL POINTS BETWEEN
SECTIONED POINTS THE ONE TO WHICH IS REFERRED TO AS TO CORRECT TO A STRAIGHT LINE BEHAVIOR BETWEEN SAID SECTI-
ONED POINTS.
ELEVATIONS ARE IN FEET ABOVE MEAN SEA LEVEL, DATUM OF 1929.
THIS DRAWING AND THE DATA HEREON ARE HEREBY MADE A PART OF THE SPECIFICATIONS.
NOISE SHALL BE CONSIDERED ACCORDING TO SPECIFICATIONS ON FILE IN THE OFFICE OF THE COUNTY ENGINEER AND SHALL
BE PROSECUTED ONLY IN THE PRESENCE OF THE COUNTY ENGINEER.
BEFORE WORK CAN BE STARTED, THE CONTRACTOR MUST OBTAIN A PERMIT TO EXCAVATE IN COUNTY STREETS FROM THE
L. A. COUNTY ROAD DEPT., 100 W. 5th ST. AND MAKE A DEPOSIT WITH THE COUNTY ENGINEER, ROOM 2111, 415 N. GARDEN ST.,
LOS ANGELES, CALIF. IN THE AMOUNT OF \$250.00 TO COVER THE COST OF CONSTRUCTION, INSPECTION AND SECOND PLANS.
THE APPROVAL OF THIS PLAN BY THE COUNTY OF LOS ANGELES DOES NOT CONSTITUTE A REPRESENTATION AS TO THE ACCURACY
OF THE LOCATION OR OF THE EXISTENCE OR NON-EXISTENCE OF ANY UNDERGROUND UTILITY PIPE, OR STRUCTURE, WITHIN THE
LIMITS OF THIS PROJECT. THE CONTRACTOR SHALL BE RESPONSIBLE FOR THE LOCATION OF ALL UTILITIES.
IF WORK IS TO BE DONE ON A STATE HIGHWAY, A PERMIT MUST BE OBTAINED FROM THE STATE OF CALIFORNIA, DIVISION OF
HIGHWAYS, 120 SOUTH BRIDGE ST., SACRAMENTO, CALIF. 95833.
COUNTY OF LOS ANGELES, CALIFORNIA
APPROVED, JOHN A. LAMME, COUNTY ENGINEER APPROVED, A. M. BARNETT, CHIEF ENGINEER
BY A. P. Collins BY S. J. Williams
SANITARY ENGINEER OFFICE ENGINEER
CHECKED BY R. K. Kuhn 1-7-57
OFFICE OF COUNTY ENGINEER, S. E. 110-7862

checked 2-8-57 [Signature]

P.C. 4246 PAGE 2
NO CHARGE FOR
CONNECTIONS
(24,088)



PC: 4246

OR