

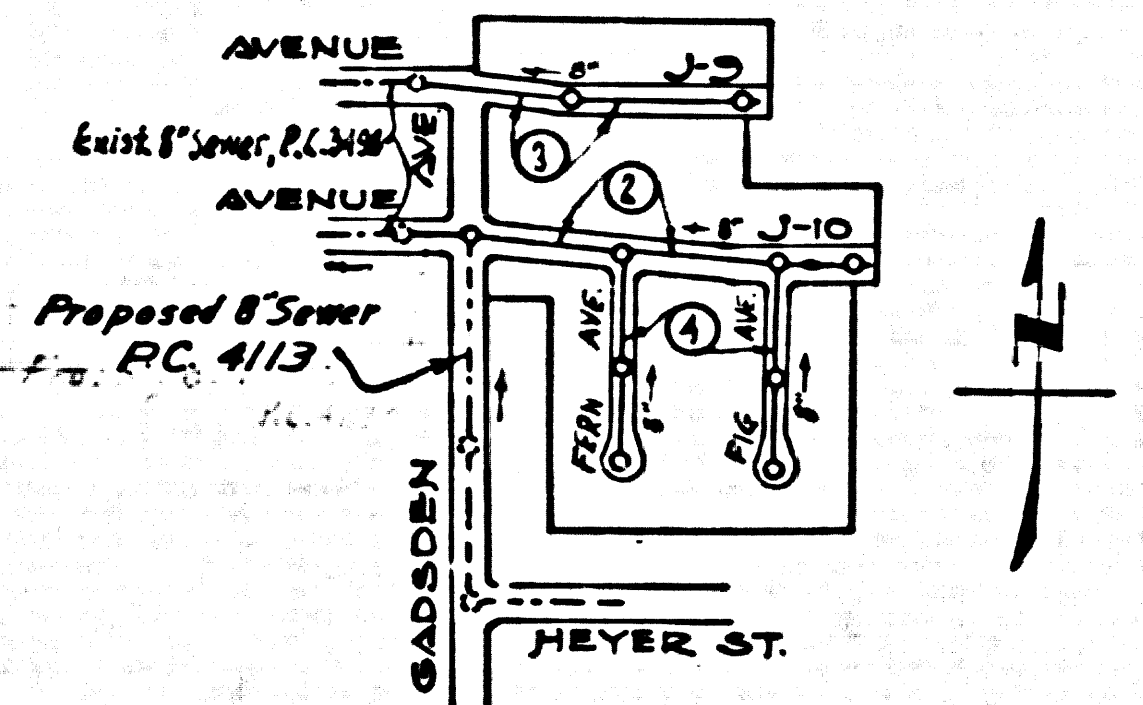
BENCH MARK:

B.M. Elev. 2371.201
 C.S. Mon. @ S.E. Cor. JANE REYNOLDS PARK -
 2" I.P. with brass cap marked R.E-2177 per
 C.S. F.B. 204-214

NOTE: Elevations on this plan are based on the above B.M. Elev. 2371.201
 Subtract 0.324' to be on S.L.-7, Elev. 2370.877 datum.

**NO CHARGE
 FOR CONNECTIONS**

7/27/57



INDEX MAP
 TRACT NO. 22845 P.C. 4247
 Scale: 1" = 400'

LANCASTER BLDG. DIST. NO. 8

- NOTES:**
- PROFILES SHOWN ON THE PROPERTY LINES OR PROPERTY LINES PRODUCED AT RIGHT ANGLES TO THE SEWER LINE AT THE CENTER LINE OF EACH MANHOLE.
 - NO REPRESENTATIVE OF THE COUNTY ENGINEER WILL SURVEY OR LAY OUT ANY PORTION OF THE WORK.
 - THE OWNER OF THE APPROVED REPRESENTATIVE SHALL FURNISH THE COUNTY ENGINEER WITH GRADE SHEETS AND STATIONING FOR ALL HOUSE LATERALS AND BRANCHES AND SHALL PROVIDE STAKES FOR THEM AT THEIR PROPER LOCATIONS WITH STATIONING PLAINLY MARKED. ANY CHANGE IN LOCATION SHALL BE REQUESTED IN WRITING BY THE OWNER OR HIS REPRESENTATIVE.
 - NO REVISIONS SHALL BE MADE IN THESE PLANS WITHOUT THE APPROVAL OF THE COUNTY ENGINEER.
 - USE STANDARD MANHOLE FRAMES AND COVERS, S.A-117, EXCEPT AS NOTED.
 - USE STANDARD STRUCTURES FOR INLET AS NOTED.
 - USE CEMENT MORTAR FOR ALL VITRIFIED CLAY PIPE JOINTS.
 - RESURFACE ALL TRENCHES WITHIN PAVED AREAS TO MEET L.A. COUNTY ROAD DEPT. OR CALIF. STATE HIGHWAY DEPT. REQUIREMENTS IN ACCORDANCE WITH PERMITS.
 - INCLUDE FOUR FEET OF COVER AT POINTS OF INTERFERENCE WITH HOUSE, S.A-119.
 - HOUSE LATERALS TO BE CONSTRUCTED WITH INVERTS AT PROPERTY LINE. FIRST BRANCH CURB GRADE EXCEPT AS NOTED.
 - ALL STRUCTURES SHALL BE BUILT WITH STRUCTURAL S.A-194, EXCEPT AS NOTED.
 - FOR ALLOWABLE LEAKAGE TEST USE FORMULA NO. 1, S.P.C.T., S.E.C. 96.
 - MANHOLE TRENCHES IN UNIMPROVED RIGHTS-OF-WAY TO BE 6" ABOVE FINISHED GRADE.
 - THE PRIVATE BUYER IS TO FURNISH THE HOUSE LATERAL DEPTHS AT THE PROPERTY LINE BELOW THE TOP OF CURB ELEVATION FOR EACH HOUSE LATERAL ON THE GRADE SHEET.
 - BOLL ALL PIPE JOINTS WITH 4" OF CEMENT MORTAR THAT ARE WITHIN 20 FEET OF ALL PROPERTY LINES OR IN SANITARY SEWER RUNS.

PROFILE ALIGNMENT AND GRADE OF **P.C. 4247**
SANITARY SEWERS PAGE **1**
 TO BE CONSTRUCTED IN

TRACT No. 22845

PRIVATE CONTRACT NO. 4247

W.S. 70

2 SHEETS, 4 PAGES

SCALE: HORIZONTAL 1" = 40' VERTICAL 1" = 4'

DECEMBER, 1956

25/26

PREPARED BY THE OFFICES OF
ROSENTHAL ENGINEERING CO.

Arthur J. Rosenthal
 REG. C.E. NO. 8805

FOR LEGEND SEE PLAN NO. S-A-64

NOTE:
 GRADES TO WHICH THIS IMPROVEMENT IS TO BE CONSTRUCTED ARE SHOWN ON PLANS AND PROFILES. GRADE POINTS FOR TOP OF CURB, CENTER LINE OF STREETS, OR CENTER LINE OF ALLEYS ARE SHOWN BY CIRCLES ON PROFILES AT ALL POINTS BETWEEN MANHOLES. POINTS BETWEEN GRADES SHALL BE ESTABLISHED SO AS TO CONFORM TO A STRAIGHT LINE BETWEEN SAID MANHOLE GRADE POINTS.
 ELEVATIONS ARE IN FEET ABOVE U.S.C. & G.S. MEAN SEA LEVEL DATUM OF 1929.
 THE SEWERING AND THE DATE HEREON SHALL BE MADE A PART OF THE SPECIFICATIONS.
 WORK SHALL BE CONSTRUCTED ACCORDING TO SPECIFICATIONS ON FILE IN THE OFFICE OF THE COUNTY ENGINEER AND SHALL BE PROTECTED ONLY BY THE PRESENCE OF THE COUNTY ENGINEER.
 BEFORE WORK CAN BE STARTED, THE CONTRACTOR MUST OBTAIN A PERMIT TO EXCAVATE IN COUNTY STREETS FROM THE L.A. COUNTY ROAD DEPT. AND SHALL MAKE A DEPOSIT WITH THE COUNTY ENGINEER, WITHIN 100 HOURS AFTER RECEIVING THIS PERMIT, \$30.00 TO COVER THE COST OF CONSTRUCTION INSPECTION AND RECORD PLANS.
 APPROVAL OF THIS PLAN BY THE COUNTY OF LOS ANGELES DOES NOT CONSTITUTE A REPRESENTATION AS TO THE ACCURACY OF THE LOCATION OF THE EXISTENCE OF NON-EXISTENCE OF ANY UNDERGROUND UTILITIES PIPE, OR STRUCTURE WITHIN THE LIMITS OF THIS PROJECT THIS NOTICE APPLIES TO ALL PAGES.
 IF WORK IS TO BE DONE IN A STATE HIGHWAY, A PERMIT MUST BE OBTAINED FROM THE STATE OF CALIFORNIA, DIVISION OF HIGHWAYS, 120 SOUTH SPRING STREET.

COUNTY OF LOS ANGELES, CALIFORNIA

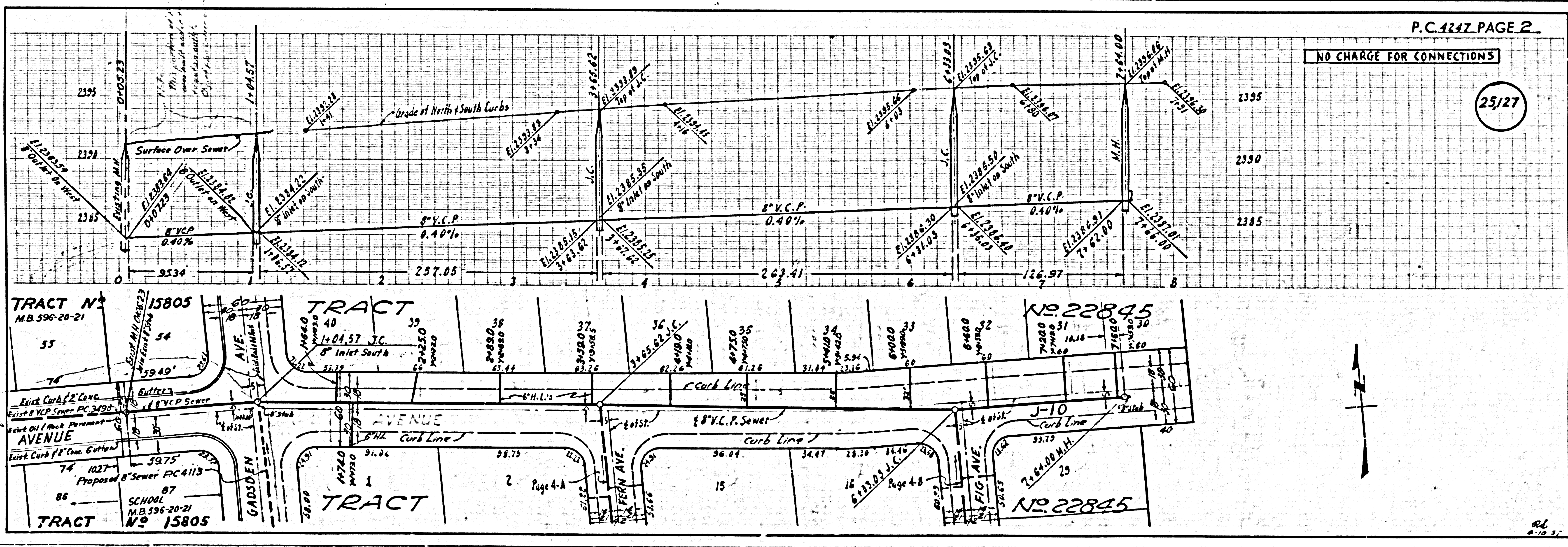
APPROVED, JOHN A. LAMBE, COUNTY ENGINEER

APPROVED, A. H. BROWN, CHIEF ENGINEER

A.P. Collins
 SANITATION ENGINEER

A.H. Brown
 CHIEF ENGINEER

CHECKED BY *Sk. White 4-9-57*
 OFFICE OF COUNTY ENGINEER, S.E.C. & NO. 5494



NO CHARGE FOR CONNECTIONS

25/27

P.C. 4247

No Sewering Service

66
 8-10-57

