

B.M. SY 2000 elevation 20.597
L.P. in concrete Part 1st of 2
intersection of Main St & 23rd St
July, 1955

LOMITA BLDG. DIST. NO. 21

PROFILE ALIGNMENT AND GRADE OF P.C. 4252
SANITARY SEWERS PAGE 1
TO BE CONSTRUCTED IN
TRACT NO 19817 (24523)

PRIVATE CONTRACT NO. 4252

W.S. 28
3 SHEETS, 9 PAGES

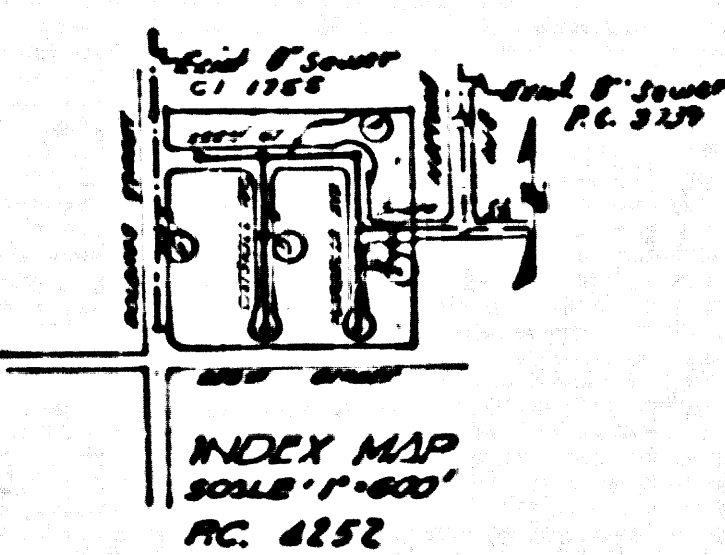
SCALE: VERT. 1" = 4' HORIZ. 1" = 20', 1956

PREPARED BY THE OFFICE OF
ANCHORAGE ENGINEERING CO.
Signed Louis H. Lewis
REG. C. E. NO. 7922

FOR LEGEND SEE PLAN NO. S-A-64

- NOTES
1. PROPERTY LINES ON THE PROPERTY LINE OR PROPERTY LINES PRODUCED AS RIGHT ANGLE TO THE SPIRAL LINE AT THE CORNER AND OF EACH RADIUS.
 2. NO REPRESENTATIVE OF THE COUNTY ENGINEER WILL SURVEY OR LAY OUT ANY PORTION OF THE WORK.
 3. THE OWNER OR HIS AUTHORIZED REPRESENTATIVE SHALL FURNISH THE COUNTY ENGINEER WITH GRASS SURVEY AND RECORD FOR ALL HOUSE LATERALS AND T BRANCHES AND SHALL PROVIDE STAKES FOR THESE AT THEIR PROPER LOCATIONS WITH BRASSING AND PLAINLY MARKED. ANY CHANGE IN LOCATION SHALL BE REQUESTED IN WRITING BY THE OWNER OR HIS REPRESENTATIVE.
 4. NO REVISIONS SHALL BE MADE IN THESE PLANS WITHOUT THE APPROVAL OF THE COUNTY ENGINEER.
 5. USE STANDARD STANDARD PLANS AND DETAILS, S.A. 117, EXCEPT AS NOTED.
 6. USE STANDARD STANDARD PIPE EXCEPT AS NOTED.
 7. USE STANDARD SOCKET FOR ALL VITRIFIED CLAY PIPE JOINTS.
 8. REINFORCE ALL TRINCH WITHIN PAVED AREA TO MEET L. A. COUNTY ROAD DEPT., OR CALIF. STATE HIGHWAY DEPT. STANDARDS IN ACCORDANCE WITH SPECIFICATIONS.
 9. DISCHARGE FROM FEET OF SEWER AT POINTS OF INTERFERENCE WITH POWER, S.A. 119.
 10. HOUSE LATERALS TO BE CONSTRUCTED WITH INVERTS AT PROPERTY LINE... SEE BELOW CURB GRADE EXCEPT AS NOTED.
 11. ALL STRUCTURES SHALL BE BRICK SEWER STRUCTURES, S.A. 104, EXCEPT AS NOTED.
 12. FOR ADDITIONAL STANDARD SEE THE FORMS NO. 1-1, 1-2, 1-3, 1-4, 1-5, 1-6, 1-7, 1-8, 1-9, 1-10, 1-11, 1-12, 1-13, 1-14, 1-15, 1-16, 1-17, 1-18, 1-19, 1-20, 1-21, 1-22, 1-23, 1-24, 1-25, 1-26, 1-27, 1-28, 1-29, 1-30, 1-31, 1-32, 1-33, 1-34, 1-35, 1-36, 1-37, 1-38, 1-39, 1-40, 1-41, 1-42, 1-43, 1-44, 1-45, 1-46, 1-47, 1-48, 1-49, 1-50, 1-51, 1-52, 1-53, 1-54, 1-55, 1-56, 1-57, 1-58, 1-59, 1-60, 1-61, 1-62, 1-63, 1-64, 1-65, 1-66, 1-67, 1-68, 1-69, 1-70, 1-71, 1-72, 1-73, 1-74, 1-75, 1-76, 1-77, 1-78, 1-79, 1-80, 1-81, 1-82, 1-83, 1-84, 1-85, 1-86, 1-87, 1-88, 1-89, 1-90, 1-91, 1-92, 1-93, 1-94, 1-95, 1-96, 1-97, 1-98, 1-99, 1-100.
 13. STANDARD TRENCH OR UNBROKEN DRAINAGE OR SEWER TO BE 18" DEEP MINIMUM GRADE.
 14. The profile map is to furnish the house lateral depth at the Property Line below the top of curb elevation, for each house lateral, on the block street.

NO CHARGE FOR CONNECTIONS



NOTES

GRADE TO WHICH THE IMPROVEMENT IS TO BE CONSTRUCTED AND BENCH MARK POINTS FOR TOP OF CURB, CENTER LINE OF STREET, OR CENTER LINE OF ALLEY ARE SHOWN BY CIRCLES ON PROFILE. AT ALL POINTS BETWEEN DESIGNATED POINTS THE GRADE SHALL BE ESTABLISHED SO AS TO COMPOSE TO A STRAIGHT LINE BETWEEN SAID DESIGNATED POINTS.

REVISIONS ARE TO BE MADE BY THE COUNTY ENGINEER AND THE CONTRACTOR SHALL BE RESPONSIBLE FOR THE ACCURACY OF THE REVISIONS. THE CONTRACTOR SHALL BE RESPONSIBLE FOR THE ACCURACY OF THE REVISIONS. THE CONTRACTOR SHALL BE RESPONSIBLE FOR THE ACCURACY OF THE REVISIONS.

THE CONTRACTOR SHALL BE RESPONSIBLE FOR THE ACCURACY OF THE REVISIONS. THE CONTRACTOR SHALL BE RESPONSIBLE FOR THE ACCURACY OF THE REVISIONS. THE CONTRACTOR SHALL BE RESPONSIBLE FOR THE ACCURACY OF THE REVISIONS.

COUNTY OF LOS ANGELES, CALIFORNIA

APPROVED, JOHN A. LAMME, COUNTY ENGINEER

APPROVED, A. H. BAYNE, CHIEF ENGINEER

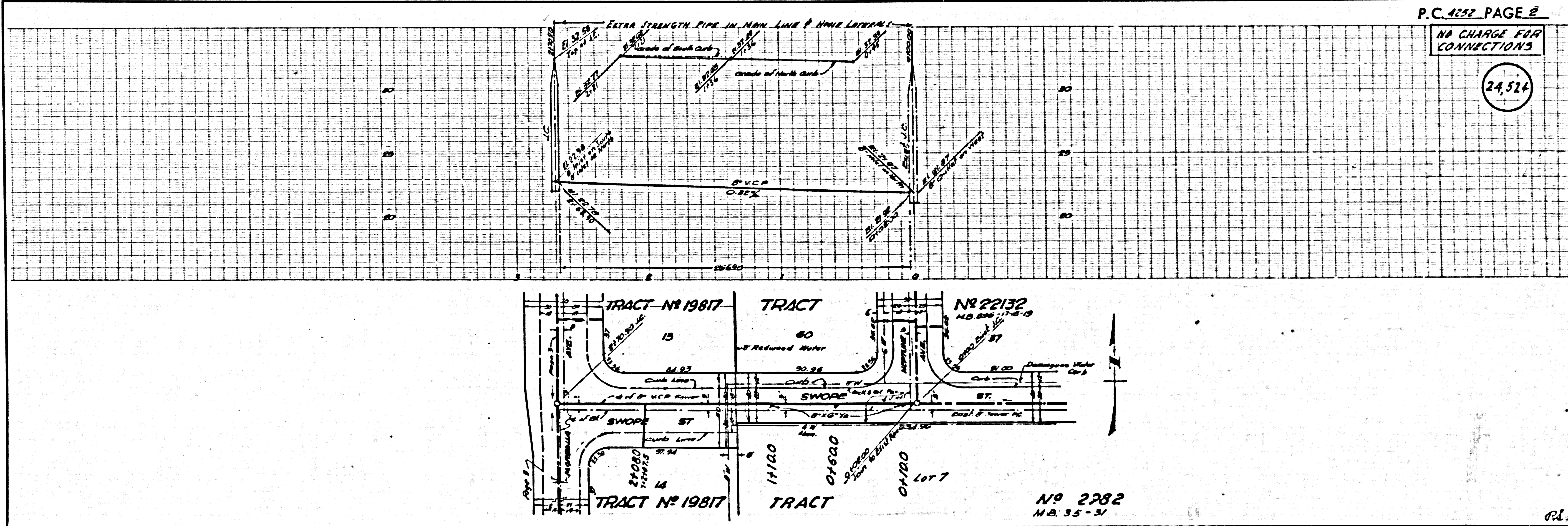
Checked by *Rekhan* 12-19-56

OFFICE OF COUNTY ENGINEER, REG. C. E. NO. 7860

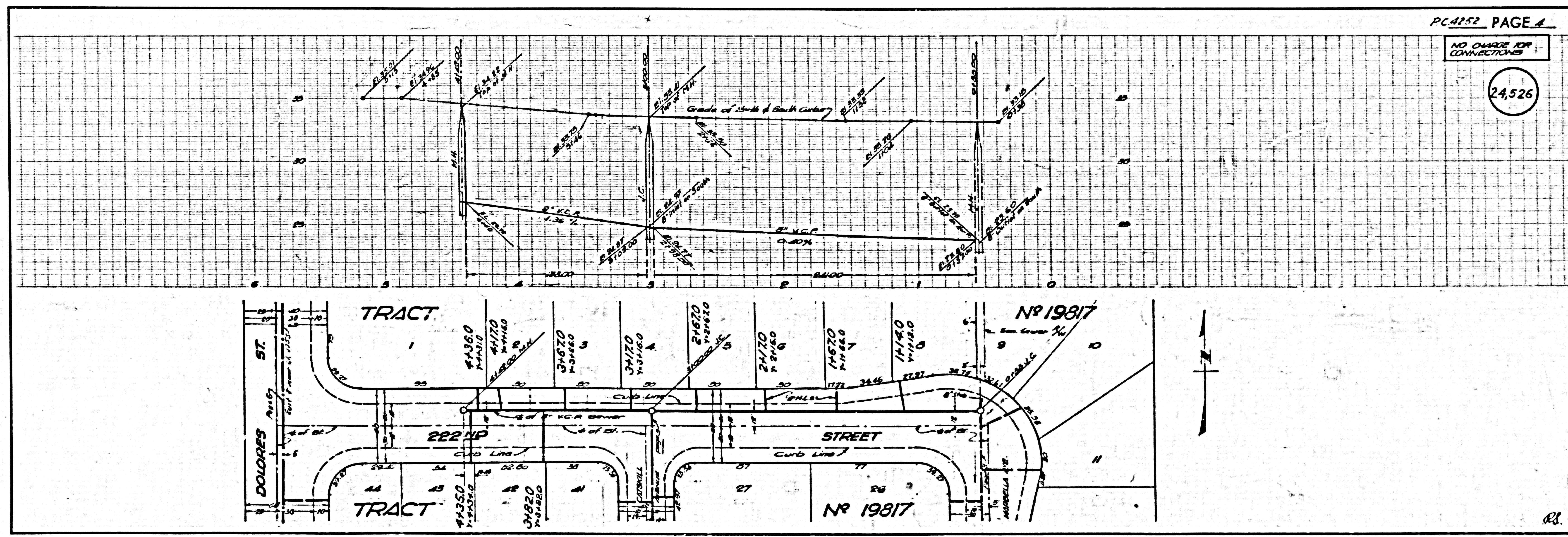
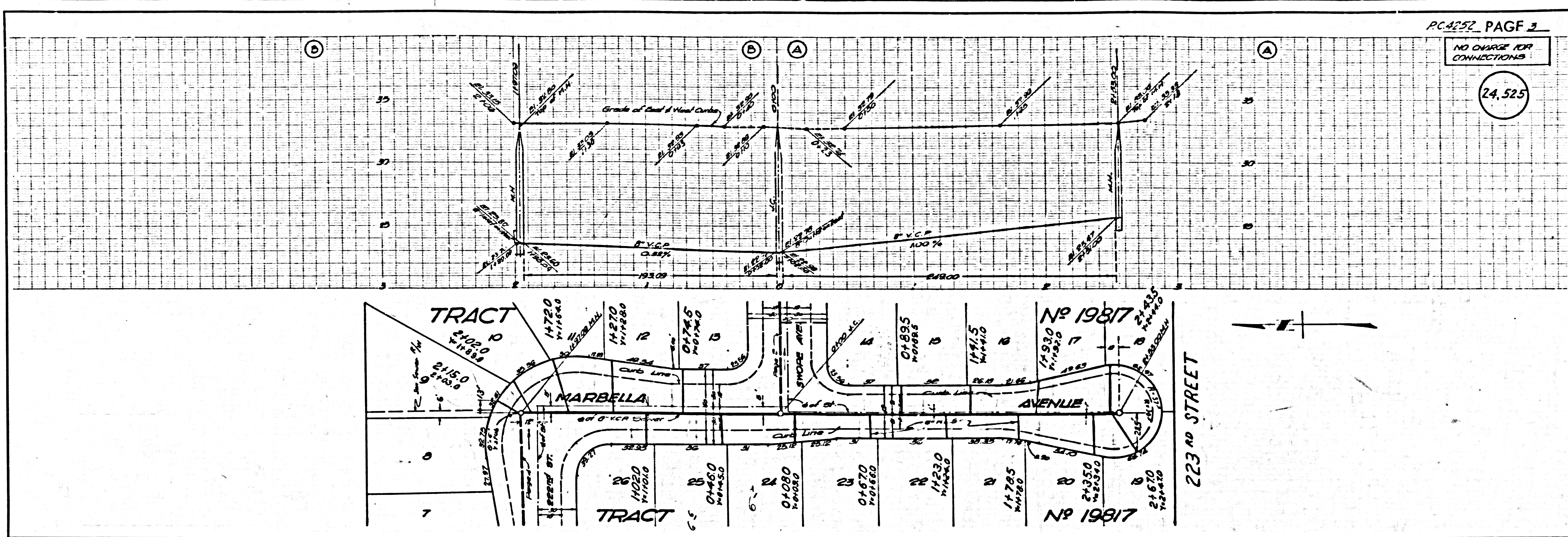
P.C. 4252 PAGE 2

NO CHARGE FOR CONNECTIONS

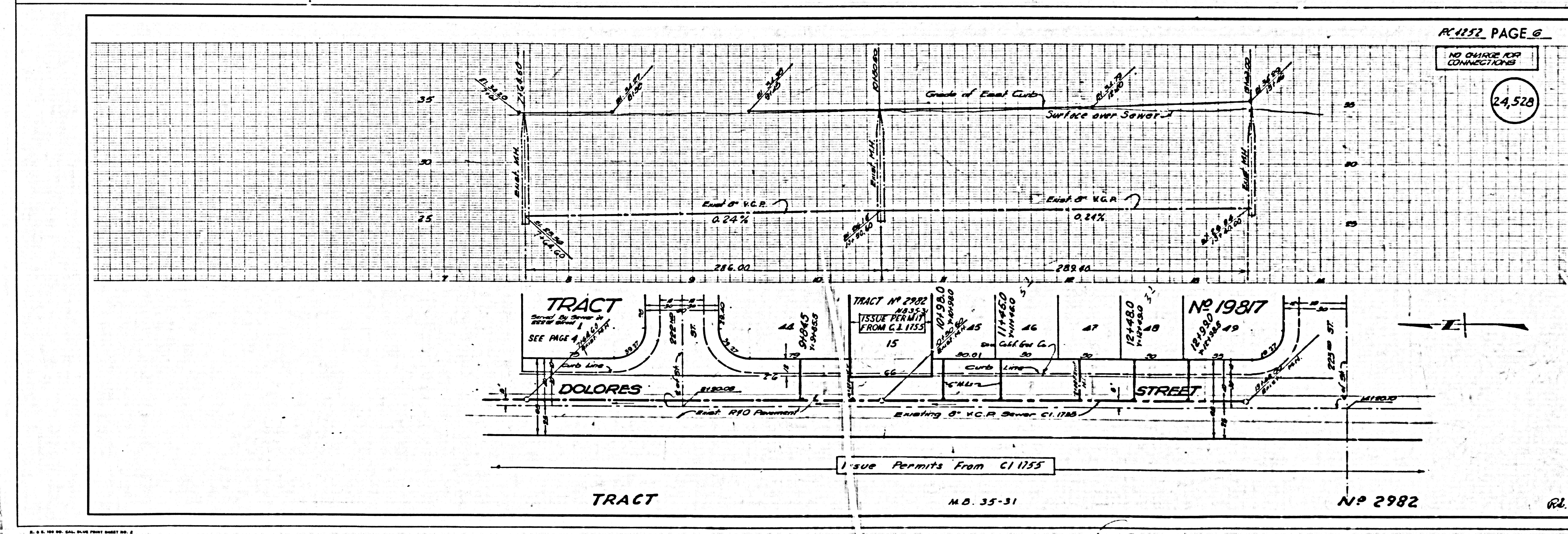
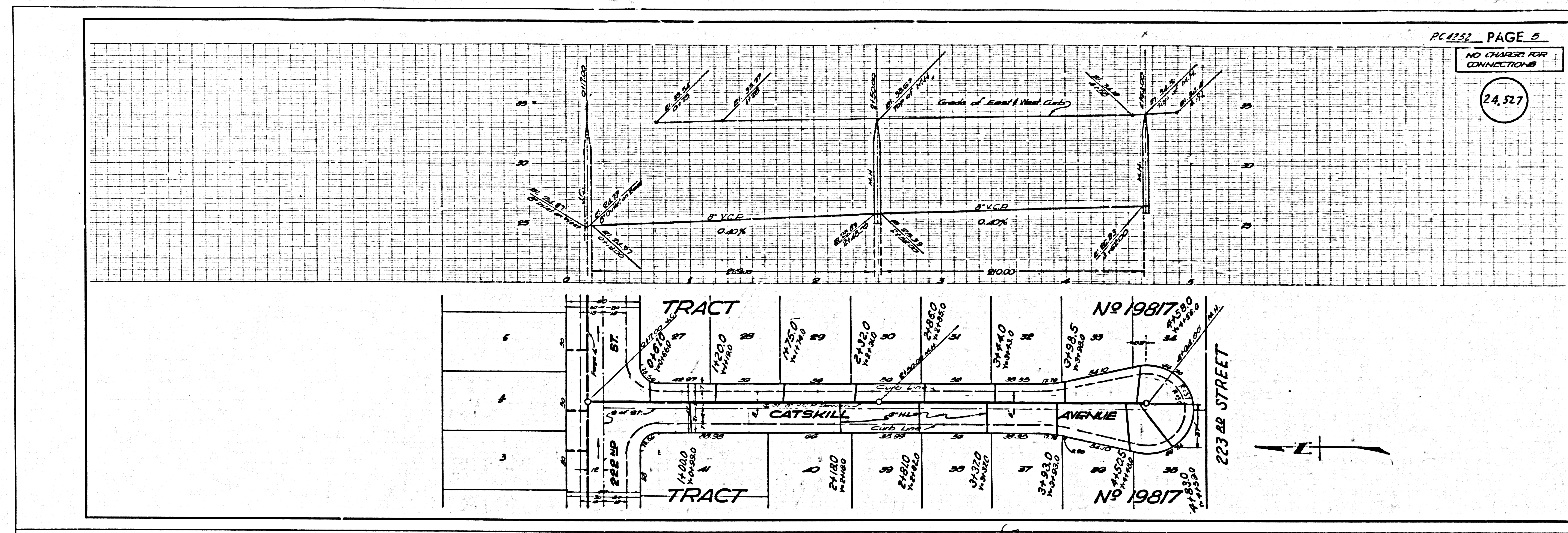
(24524)



BC 4523



PC 4252



6-C-4525