

BENCHMARK: B.M. #2 STD. CO. SURV. MON. MARKED  
 12 1/2' SET IN CONC. 14" BELLUM SURFACE ON APPROX. E  
 OF ESCALONA RD. 75' N. OF E. OF STABLE RD. IN WELL  
 PROTECTED BY CAST IRON COVER. PEN. C.S.A. # 1204-6  
 L.A. CO. 1958 ADJ. EL. 104.842

NORWALK BLDG. DIST. NO. 42

PROFILE ALIGNMENT AND GRADE OF P.C. 4257  
 SANITARY SEWERS PAGE 1  
 TO BE CONSTRUCTED IN DOUBLE SCALE  
 SANITARY SEWER RIW  
 LA MIRADA SHOPPING CENTER

- NOTES
- PROVIDE STAKES ON THE PROPERTY LINE OR P.L. BY LINES PRODUCED AT RIGHT ANGLES TO THE SEWER LINE AT THE CENTER LINE OF EACH MANHOLE.
  - NO REPRESENTATIVE OF THE COUNTY ENGINEER SHALL SURVEY OR LAYOUT ANY PORTION OF THE WORK.
  - THE OWNER OR HIS AUTHORIZED REPRESENTATIVE SHALL FURNISH THE COUNTY ENGINEER WITH GRADE SHEETS AND STATION FOR ALL HOUSE LATERALS AND Y BRANCHES AND SHALL PROVIDE STAKES FOR TIE-INS AT THEIR PROPER LOCATIONS WITH STATIONING PLAINLY MARKED. ANY CHANGE IN LOCATION SHALL BE REQUESTED IN WRITING BY THE OWNER OR HIS REPRESENTATIVE.
  - NO REVISIONS SHALL BE MADE IN THESE PLANS WITHOUT THE APPROVAL OF THE COUNTY ENGINEER.
  - USE STANDARD MANHOLE FRAMES AND COVERS, S.A. 117, EXCEPT AS NOTED.
  - USE STANDARD STRENGTH PIPE EXCEPT AS NOTED.
  - USE CEMENT MORTAR FOR ALL VITRIFIED CLAY PIPE JOINTS.
  - RESURFACE ALL TRENCH WITHIN PAVED AREA TO MEET L.A. COUNTY ROAD DEPT. OR CALIF. STATE HIGHWAY DEPT. REQUIREMENTS IN ACCORDANCE WITH PERMITS.
  - SHOULDER FOUR FEET OF BENCH AT POINTS OF INTERFERENCE WITH POLES, S.A. 119.
  - NO 10'-0" LATERALS TO BE CONSTRUCTED WITH SHOULDER AT INTERFERENCE WITH POLES EXCEPT AS NOTED.
  - ALL STRUCTURES SHALL BE BRICK SEWER STRUCTURES, S.A. 104, EXCEPT AS NOTED.
  - FOR ALLOWABLE LEAKAGE TEST USE FORMULA NO. 1, SPEC. SEC. 54.
  - MANHOLE TOPS IN IMPROVED RIGHTS-OF-WAY TO BE FINISH FINISHED GRADE.

PRIVATE CONTRACT NO. 4257

W.S. 34  
 2 SHEETS, 3 PAGES

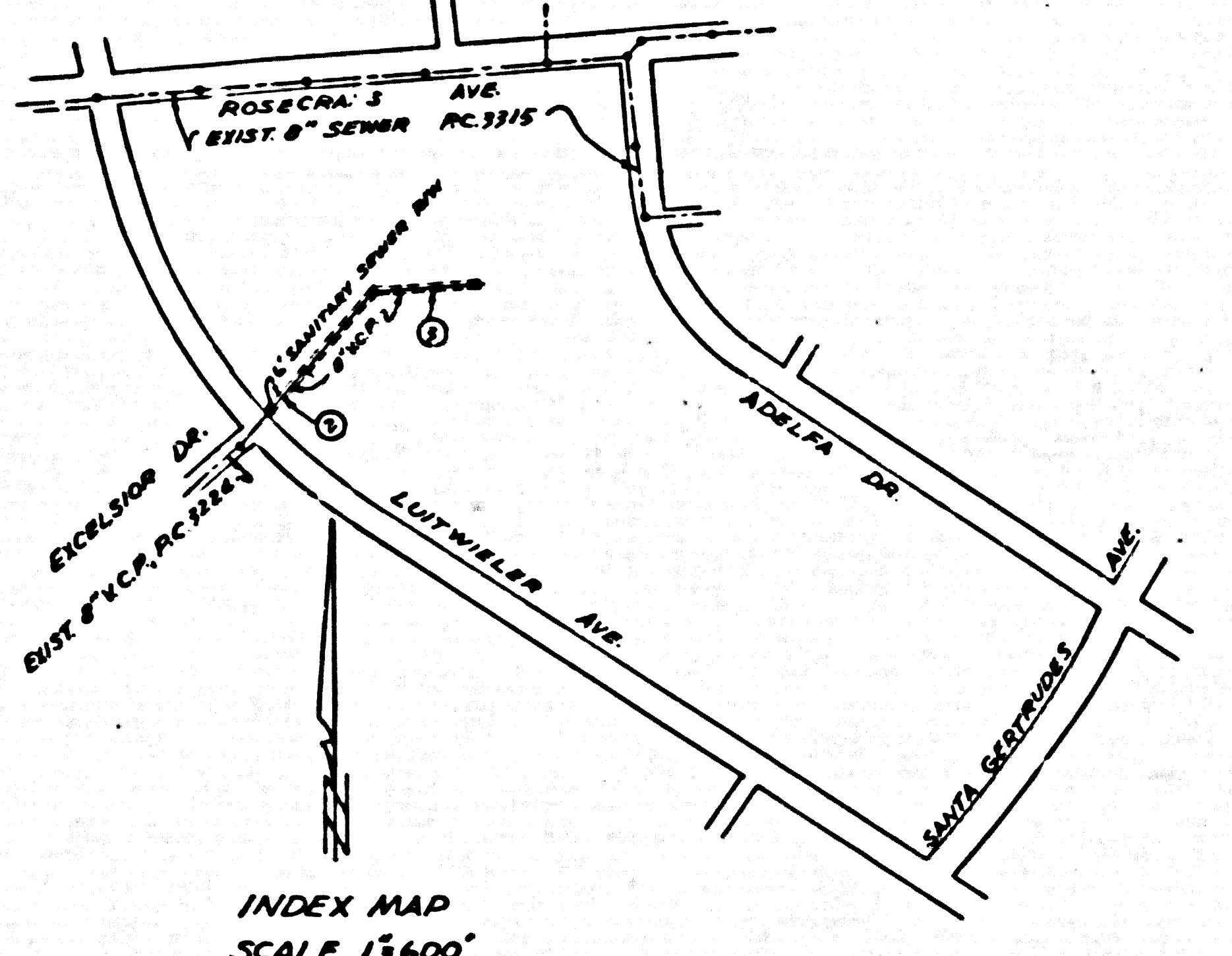
24,604  
 B

SCALE: VERT. 1"=2'  
 HORIZ. 1"=40'  
 DEC., 1956

PREPARED IN THE OFFICES OF  
 VICTOR GRUEN & ASSOCIATES

BY: *Nicholas Quinn*  
 M.C. C. E. NO. 6485

FOR LEGEND SEE PLAN NO. S.A. 64



INDEX MAP  
 SCALE 1"=600'  
 PC 4257

NO CHARGE FOR  
 CONNECTIONS  
*L. Curtis 5-2-57*

DO NOT ISSUE PERMITS UNTIL  
 RIGHT OF WAY IS CLEAR.  
 CALL MAIN OFFICE. EXT. 464

NOTE  
 GRADES TO WHICH THIS IMPROVEMENT IS TO BE CONSTRUCTED ARE SHOWN ON PLANS AND PROFILES. GRADE POINTS FOR TOP OF CURBS, CENTER LINE OF STREETS, OR CENTER LINE OF ALLEYS ARE SHOWN BY CIRCLES ON PROFILES. AT ALL POINTS BETWEEN SUCH POINTS THE GRADE SHALL BE ESTABLISHED SO AS TO CONFORM TO A STRAIGHT LINE DRAWN BETWEEN SAID DESIGNATED POINTS.  
 ELEVATIONS ARE IN FEET ABOVE M.T.S. 29.93 SEA LEVEL DATUM OF 1929.  
 THIS DRAWING AND THE DATA HEREON ARE HEREBY MADE A PART OF THE SPECIFICATIONS.  
 WORK SHALL BE CONSTRUCTED ACCORDING TO SPECIFICATIONS ON FILE IN THE OFFICE OF THE COUNTY ENGINEER AND SHALL BE INSPECTED ONLY IN THE PRESENCE OF THE COUNTY ENGINEER.  
 BEFORE WORK CAN BE STARTED, THE CONTRACTOR MUST OBTAIN A PERMIT TO EXCAVATE IN COUNTY RIGHTS FROM THE L.A. COUNTY ROAD DEPT. USE W. 306-27 AND MAKE A REPORT WITH THE COUNTY ENGINEER, ROOM 254 PARK AVENUE, BUILDING 250 SO. BROADWAY SUFFICIENT TO COVER THE COST OF CONSTRUCTION INSPECTION AND RECORD PLANS.  
 APPROVAL OF THIS PLAN BY THE COUNTY OF LOS ANGELES DOES NOT CONSTITUTE A REPRESENTATION AS TO THE ACCURACY OF THE LOCATION OF OR THE EXISTENCE OR NON-EXISTENCE OF ANY UNDERGROUND UTILITY PIPE, OR STRUCTURE WITHIN THE LIMITS OF THIS PROJECT THE CITY APPLIES TO ALL RANGES.  
 IF WORK IS TO BE DONE IN A STATE HIGHWAY, A PERMIT MUST BE OBTAINED FROM THE STATE OF CALIFORNIA, DIVISION OF HIGHWAYS, 128 SOUTH SPRING STREET.

COUNTY OF LOS ANGELES, CALIFORNIA

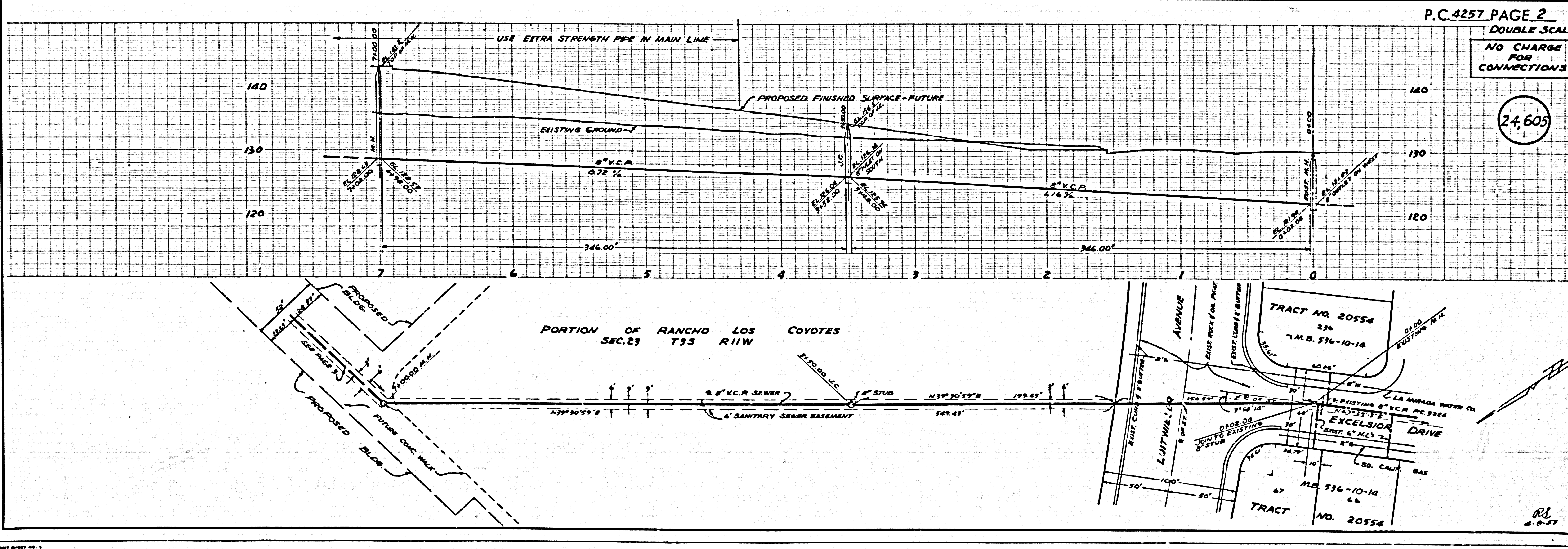
APPROVED, JOHN A. LAMBE, COUNTY ENGINEER

APPROVED, A. M. RAWN, CHIEF ENGINEER

BY: *L. J. Long*  
 SANITATION ENGINEER

BY: *J. C. Williams*  
 OFFICE ENGINEER

CHECKED BY: *Col. J. J. ...*  
 OFFICE OF COUNTY ENGINEER, P.O. BOX NO. 10, 6-37



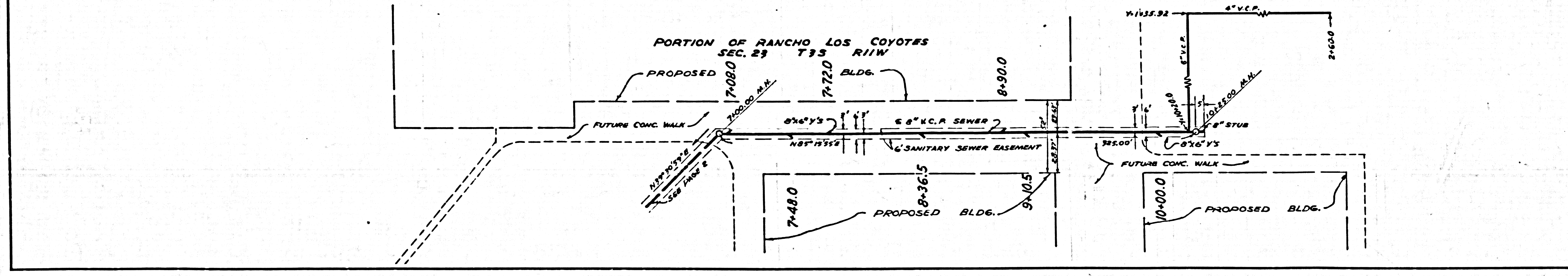
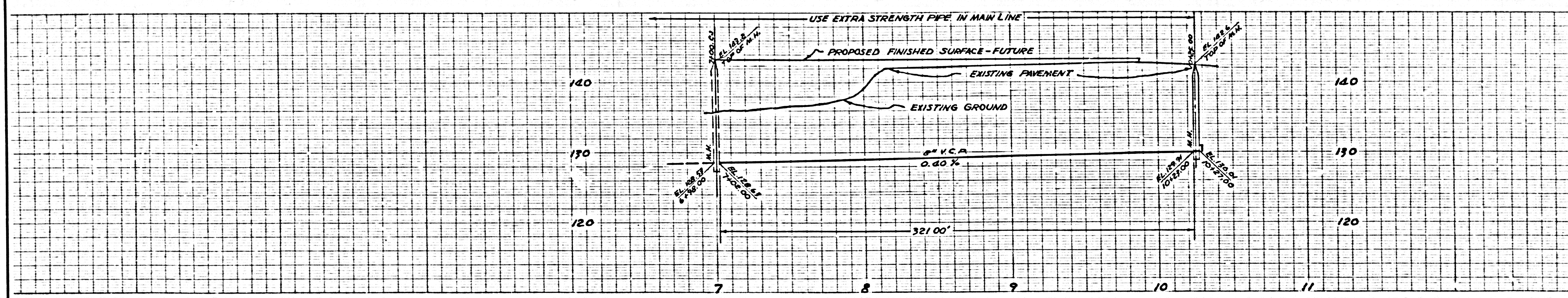
P.C. 4257 PAGE 2  
 DOUBLE SCALE

NO CHARGE FOR CONNECTIONS

24,605

DOUBLE SCALE  
NO CHARGE FOR CONNECTIONS

24606  
B



RJ  
4-3-57