

B.M. 17-71 Elev. 540.954 (1952 Adj.)
 F.B. 1738-63 LOTUS & FAIRVIEW
 Northeast corner, East side, in curb
 4 ft. North of North and curb return

TEMPLE CITY BLDG. DIST. NO. 5

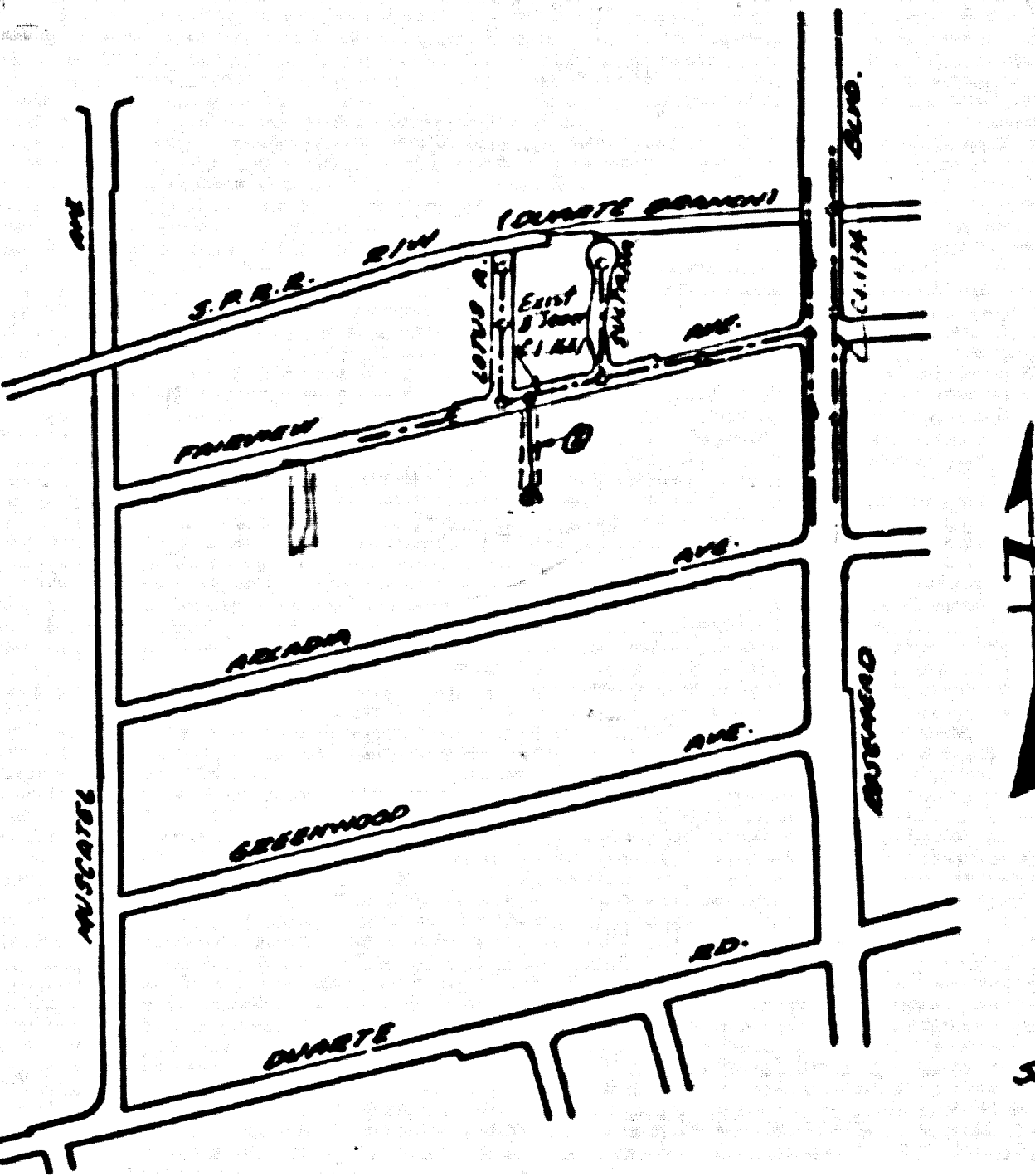
- NOTE:
 PROVIDE STAGES ON THE PROPERTY LINE OR PROPERTY LINES PRODUCED AT RIGHT ANGLES TO THE SEWER LINE AT THE CENTER LINE OF EACH MANHOLE.
 NO REPRESENTATIVE OF THE COUNTY ENGINEER WILL SURVEY OR LAYOUT ANY PORTION OF THE WORK.
 THE OWNER OR HIS AUTHORIZED REPRESENTATIVE SHALL FURNISH THE COUNTY ENGINEER WITH GRADE SHEETS AND STATIONING PLANNED MARKERS. ANY CHANGE IN LOCATION SHALL BE REQUESTED IN WRITING BY THE OWNER OR HIS REPRESENTATIVE.
 NO REVISIONS SHALL BE MADE IN THESE PLANS WITHOUT THE APPROVAL OF THE COUNTY ENGINEER.
- USE STANDARD MANHOLE FRAMES AND COVERS, S.A.-117, EXCEPT AS NOTED.
 - USE STANDARD STRENGTH PIPE EXCEPT AS NOTED.
 - USE CEMENT MORTAR FOR ALL VITRIFIED CLAY PIPE JOINTS.
 - RESURFACE ALL TRINCHES WITHIN PAVED AREA TO MEET L. A. COUNTY ROAD DEPT. OR CALIF. STATE HIGHWAY DEPT. REQUIREMENTS IN ACCORDANCE WITH PERMITS.
 - ENCASE FOUR FEET OF SEWER AT POINTS OF INTERFERENCE WITH POLES, S.A.-119.
 - ALL MANHOLES SHALL BE BRICK SEWER STRUCTURES, S.A.-104, EXCEPT AS NOTED.
 - FOR ALLOWABLE LEAKAGE TEST USE FORMULA NO. 1, SPEC. SEC. 64.
 - MANHOLE POPE IN UNIMPROVED RIGHTS-OF-WAY TO BE 6" ABOVE FINISHED GRADE.

PROFILE ALIGNMENT AND GRADE OF **P.C. 4260**
SANITARY SEWERS PAGE **1**
 TO BE CONSTRUCTED IN
RIGHTS OF WAY SOUTH OF FAIRVIEW AVENUE

PRIVATE CONTRACT NO. 4260
 W.S. 44
 1 SHEET OF 2 PAGES **24,170**
 SCALE: HORIZ. 1" = 40' VERT. 1" = 4'
 DECEMBER 1956
 PREPARED IN THE OFFICES OF
M. W. FINLEY CO. (2)

NO CHARGE FOR CONNECTIONS
 -SK Slide 1-22-57

INDEX TABLE	
SHEETS	PAGES
1	2



INDEX MAP
 SCALE 1" = 400'
 SANITARY SEWER SYSTEM
 P.C. 4260

NOTE:
 GRADES TO WHICH THIS IMPROVEMENT IS TO BE CONSTRUCTED ARE SHOWN ON PLANS AND PROFILES. GRADE POINTS FOR TOP OF CURB, CENTER LINE OF STREETS, OR CENTER LINE OF ALLEYS ARE SHOWN BY CIRCLES ON PROFILES. AT ALL POINTS BETWEEN DESIGNATED POINTS THE GRADE SHALL BE ESTABLISHED SO AS TO CONFORM TO A STRAIGHT LINE DRAWN BETWEEN SAID DESIGNATED POINTS.
 ELEVATIONS ARE IN FEET ABOVE M.S.L. SEE SPEC. SECTION 24 FOR DETAILS.
 THE BEARING AND THE DATA HEREON ARE HEREBY MADE A PART OF THE SPECIFICATIONS.
 WORK SHALL BE CONSTRUCTED ACCORDING TO SPECIFICATIONS ON FILE IN THE OFFICE OF THE COUNTY ENGINEER AND SHALL BE PROSECUTED ONLY IN THE PRESENCE OF THE COUNTY ENGINEER.
 BEFORE WORK CAN BE STARTED, THE CONTRACTOR MUST OBTAIN A PERMIT TO EXCAVATE IN COUNTY STREETS FROM THE L. A. COUNTY ROAD DEPT., 126 W. 2ND ST. AND MAKE A REPORT WITH THE COUNTY ENGINEER, ROOM 324 FARM LABORERS BUILDING, 318 SO. BROADWAY SUBMITTIVE TO COVER THE COST OF CONSTRUCTION INSPECTION AND RECORD PLANS.
 APPROVAL OF THIS PLAN BY THE COUNTY OF LOS ANGELES DOES NOT CONSTITUTE A REPRESENTATION AS TO THE ACCURACY OF THE LOCATION OR OF THE EXISTENCE OR NON-EXISTENCE OF ANY UNDERGROUND UTILITY PIPE, OR STRUCTURE WITHIN THE LIMITS OF THIS PROJECT. THIS NOTE APPLIES TO ALL PAGES.
 IF WORK IS TO BE DONE IN A STATE HIGHWAY, A PERMIT MUST BE OBTAINED FROM THE STATE OF CALIFORNIA, DIVISION OF HIGHWAYS, 130 SOUTH SPRING STREET.

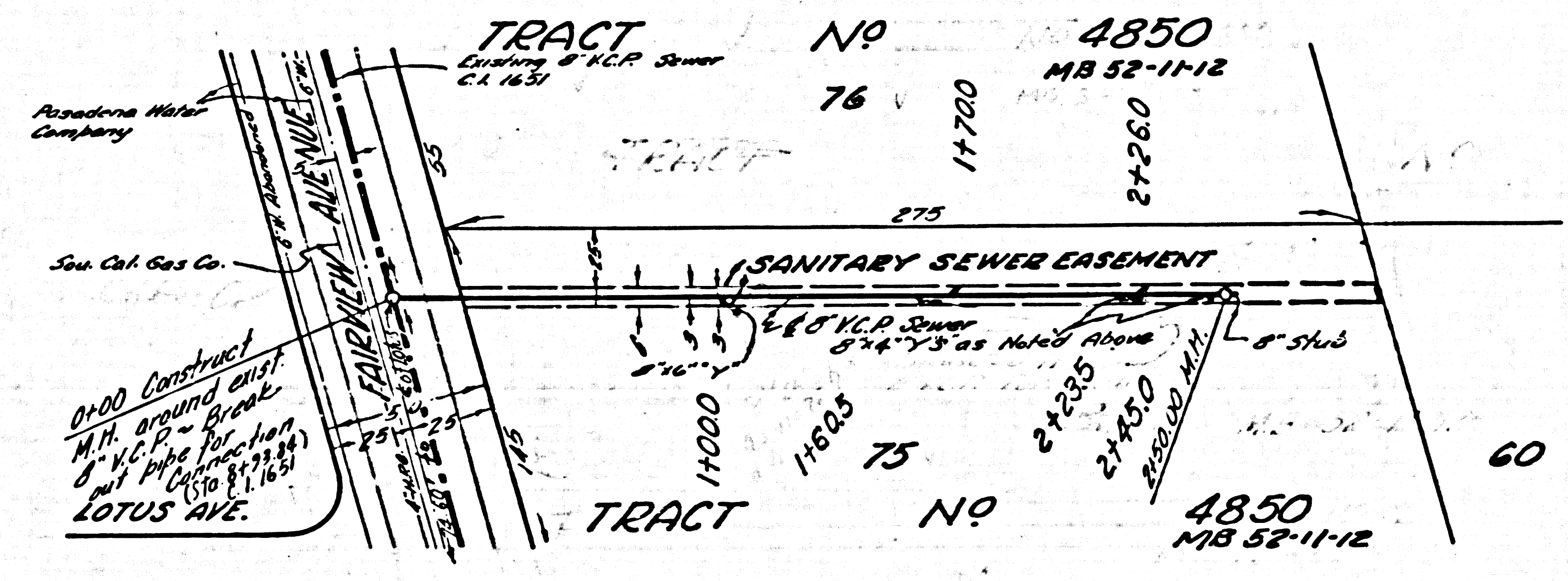
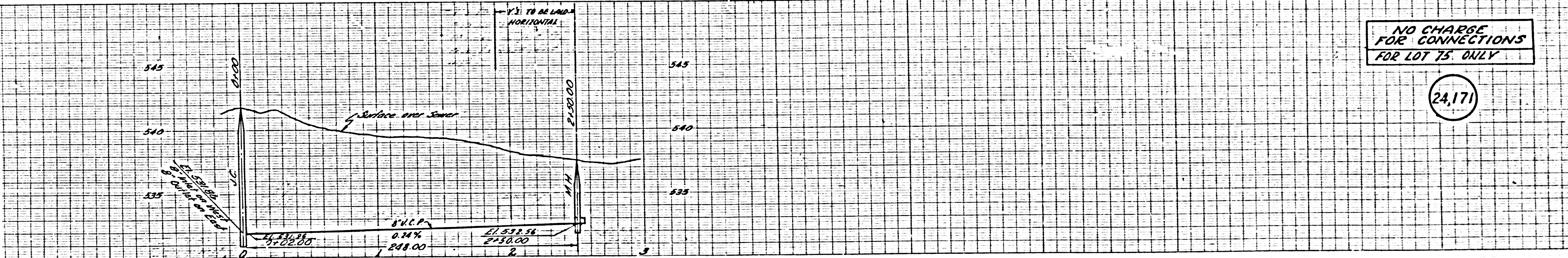
COUNTY OF LOS ANGELES, CALIFORNIA
 APPROVED, JOHN A. LAMBE, COUNTY ENGINEER
 APPROVED, A. M. RAWIN, CHIEF ENGINEER
 CO. SAN. DIST. NO. 13
 BY A. P. Collins BY W. C. Posthumus
 SANITATION ENGINEER OFFICE ENGINEER
 CHECKED BY -SK Slide 1-22-57
 OFFICE OF COUNTY ENGINEER, BLDG. C. E. NO. 3406

Checked 2-25-57 McLaren

P.C. 4260 PAGE 2

NO CHARGE FOR CONNECTIONS FOR LOT 75 ONLY

24,171



B.C. 4520