

LANCASTER BLDG. DIST. NO. 8

PROFILE ALIGNMENT AND GRADE OF
SANITARY SEWERS PAGE 1

TRACT N° 23510
M.B. 611, 98-100

PRIVATE CONTRACT NO. 4263

W.S.
3 SHEETS, 6 PAGES

SCALE: VERT. 1" = 4'
HORIZ. 1" = 40'

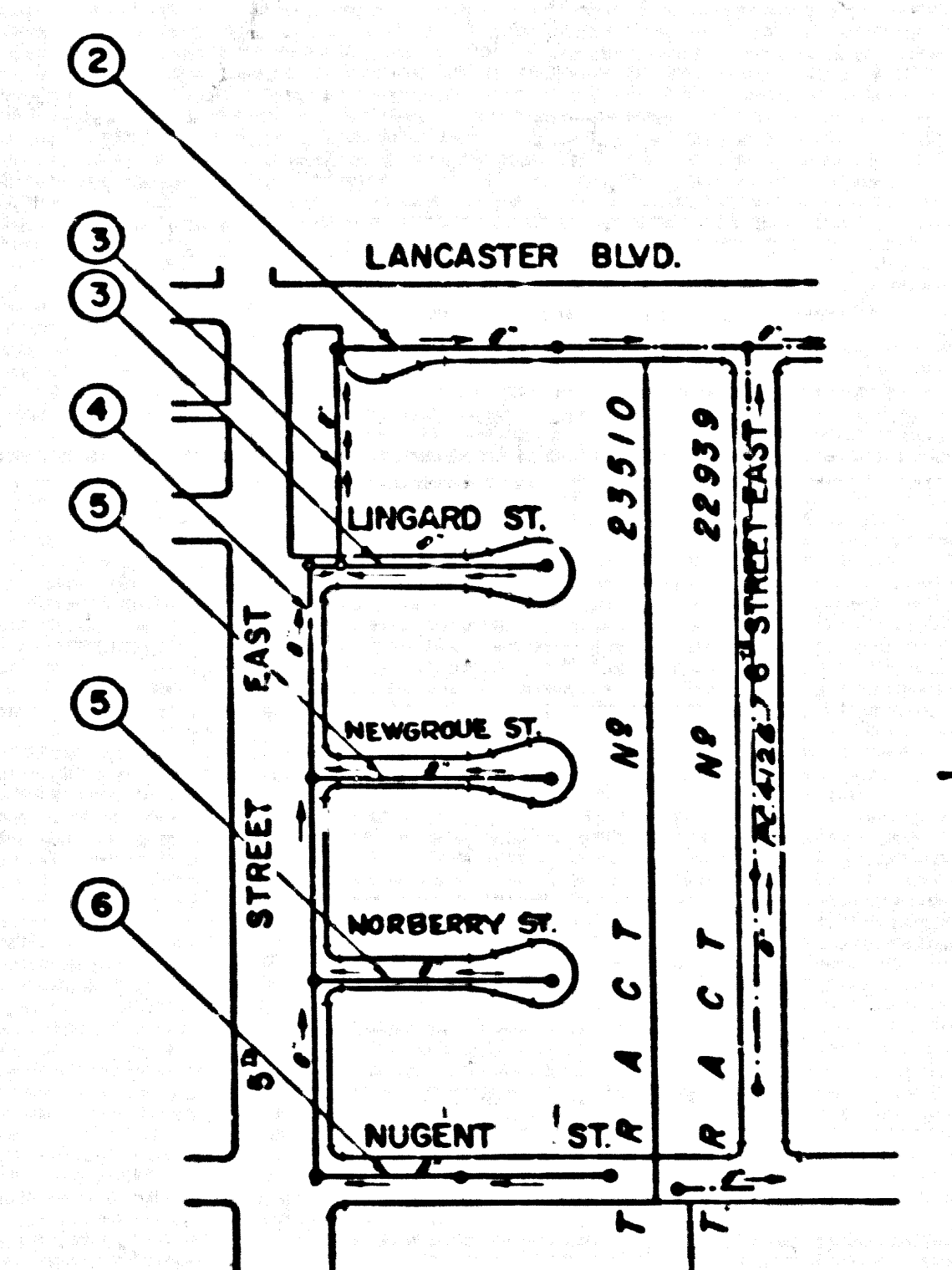
JANUARY, 1957

PREPARED IN THE OFFICES OF
CONLEY ENGINEERS COMPANY.

by Hugh G. Conley
REG. C. E. NO. 3453

FOR LEGEND SEE PLAN NO. S-A-64

- NOTES:
- PROVIDE STAKES ON THE PROPERTY LINE OR PROPERTY LINES PRODUCED AT RIGHT ANGLES TO THE SEWER LINE AT THE CENTER LINE OF EACH MANHOLE.
 - NO REPRESENTATIVE OF THE COUNTY ENGINEER WILL SURVEY OR LAYOUT ANY PORTION OF THE WORK.
 - THE OWNER OR HIS AUTHORIZED REPRESENTATIVE SHALL FURNISH THE COUNTY ENGINEER WITH GRADE SHEETS AND STATION FOR ALL HOUSE LATERALS AND V BRANCHES AND SHALL PROVIDE STAKES FOR THEM AT THEIR PROPER LOCATIONS WITH STATIONING PLAINLY MARKED. ANY CHANGE IN LOCATION SHALL BE REQUESTED IN WRITING BY THE OWNER OR HIS REPRESENTATIVE.
 - NO REVISIONS SHALL BE MADE IN THESE PLANS WITHOUT THE APPROVAL OF THE COUNTY ENGINEER.
 - USE STANDARD MANHOLE FRAMES AND COVERS, S.A.117, EXCEPT AS NOTED.
 - USE STANDARD STRENGTH PIPE EXCEPT AS NOTED.
 - USE CEMENT MORTAR FOR ALL VITRIFIED CLAY PIPE JOINTS.
 - RESURFACE ALL TRENCH WITHIN PAVED AREA TO MEET L. A. COUNTY ROAD DEPT., OR CALIF. STATE HIGHWAY DEPT. REQUIREMENTS IN ACCORDANCE WITH PERMITS.
 - ENCASE FOUR FEET OF SEWER AT POINTS OF INTERFERENCE WITH POLES, S.A.119.
 - HOUSE LATERALS TO BE CONSTRUCTED WITH INVERTS AT PROPERTY LINE 8 FEET BELOW CURB GRADE EXCEPT AS NOTED.
 - ALL STRUCTURES SHALL BE BRICK SEWER STRUCTURES, S.A.194, EXCEPT AS NOTED.
 - FOR ALLOWABLE LEAKAGE TEST USE FORMULA NO. 1 SPEC'S, SEC. 94
 - MANHOLES TOPS IN UNIMPROVED RIGHTS-OF-WAY TO BE 4" ABOVE FINISHED GRADE.
 - CALL ALL PIPE JOINTS WITH 6" CEMENT MORTAR THAT ARE WITHIN 50' FEET OF ALL PROPERTY LINES OF IN SANITARY SEWER S/W.S.
 - THE PRIVATE ENGINEER TO FURNISH HOUSE LATERAL DEPTH AT PROPERTY LINE BELOW TOP OF CURB ELEVATION FOR EACH HOUSE LATERAL ON THE GRADE SHEET.



INDEX MAP
TRACT N° 23510
SCALE - 1"=300'
P.C.4263

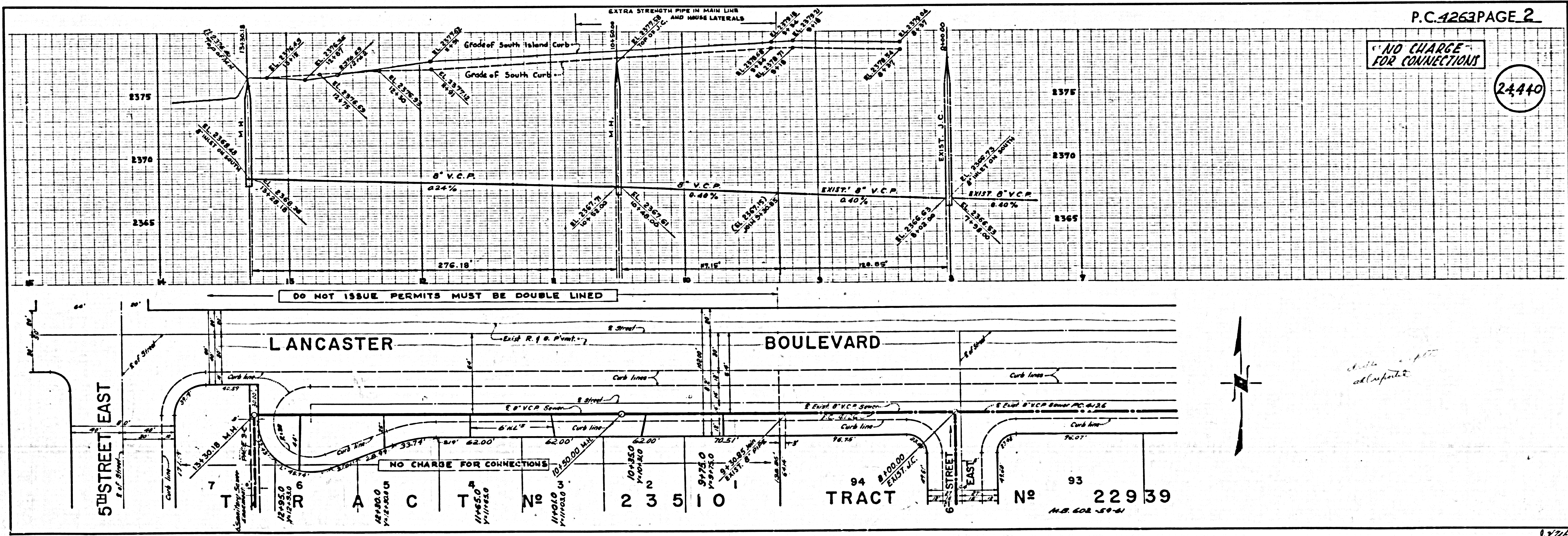
INDEX TABLE	
SHEETS	PAGES
3	6

NO CHARGE FOR CONNECTIONS
7.77 & 2.65

B.M. - S.L. 61 S.L. B.M. PAGE 30, 2379.667 ADJ. 1956
BRASS CAP IN CONCRETE MONUMENT 5' 20" DEEP
@ E INTERSECTION OF LANCASTER BLVD. AND 10th STREET EAST.

NOTES:
GRADES TO WHICH THIS IMPROVEMENT IS TO BE CONSTRUCTED ARE SHOWN ON PLANS AND PROFILE. GRADE POINTS FOR P.A.P. OF CURBS, CENTER LINE OF STREETS, OR CENTER LINE OF ALLEYS ARE SHOWN BY CIRCLES ON PROFILES. AT ALL POINTS BETWEEN DESIGNATED POINTS THE GRADE SHALL BE ESTABLISHED SO AS TO COMFORM TO A STRAIGHT LINE DRAWN BETWEEN SAID DESIGNATED POINTS.
ELEVATIONS ARE IN FEET ABOVE U.S.C. & G.S. SEA LEVEL. DATE OF P.P.S.
THIS DRAWING AND THE DATA HEREON ARE HEREBY MADE A PART OF THE SPECIFICATIONS.
WORK SHALL BE CONSTRUCTED ACCORDING TO SPECIFICATIONS ON FILE IN THE OFFICE OF THE COUNTY ENGINEER AND SHALL BE PROSECUTED ONLY IN THE PRESENCE OF THE COUNTY ENGINEER.
BEFORE WORK CAN BE STARTED, THE CONTRACTOR MUST OBTAIN A PERMIT TO EXCAVATE IN COUNTY STREETS FROM THE L. A. COUNTY ROAD DEPT., 108 W. 2ND ST. AND MAKE A DEPOSIT WITH THE COUNTY ENGINEER, ROOM 324 PAN AMERICAN BUILDING, 233 SO. HOUGHWAY AVENUE TO COVER THE COST OF CONSTRUCTION INSPECTION AND RECORD PLANS.
APPROVAL OF THIS PLAN BY THE COUNTY OF LOS ANGELES DOES NOT CONSTITUTE A REPRESENTATION AS TO THE ACCURACY OF THE LOCATION OF OR THE EXISTENCE OR NON-EXISTENCE OF ANY UNDERGROUND UTILITY PIPE, OR STRUCTURE WITHIN THE LIMITS OF THIS PROJECT. THIS NOTE APPLIES TO ALL PAGES.
IF WORK IS TO BE DONE IN A STATE HIGHWAY, A PERMIT MUST BE OBTAINED FROM THE STATE OF CALIFORNIA, DIVISION OF HIGHWAYS, 128 SOUTH SPRING STREET.

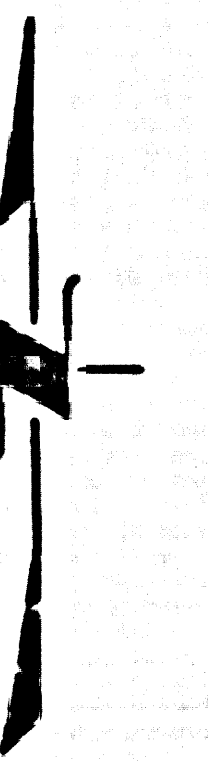
COUNTY OF LOS ANGELES, CALIFORNIA
APPROVED, JOHN A. LAMME, COUNTY ENGINEER
APPROVED, A. M. RAWN, CHIEF ENGINEER
BY Hugh G. Conley COUNTY ENGINEER
CHECKED BY W. C. O'Neil 2-21-57
OFFICE OF COUNTY ENGINEER, 108 C. E. NO. 3453



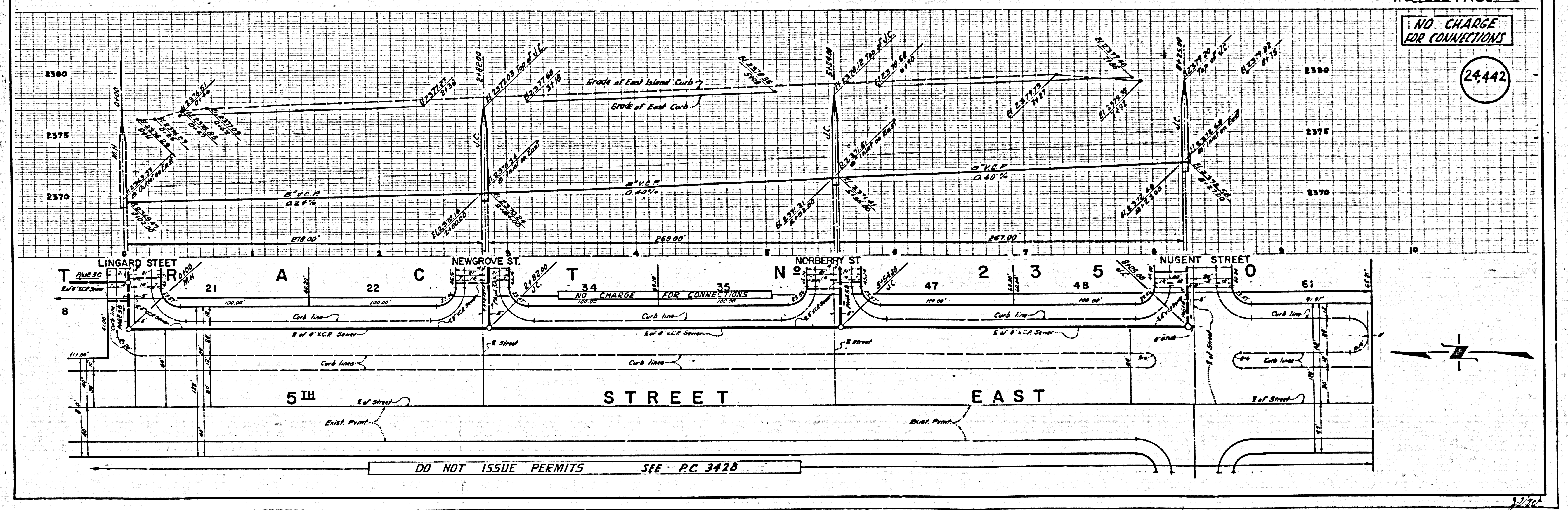
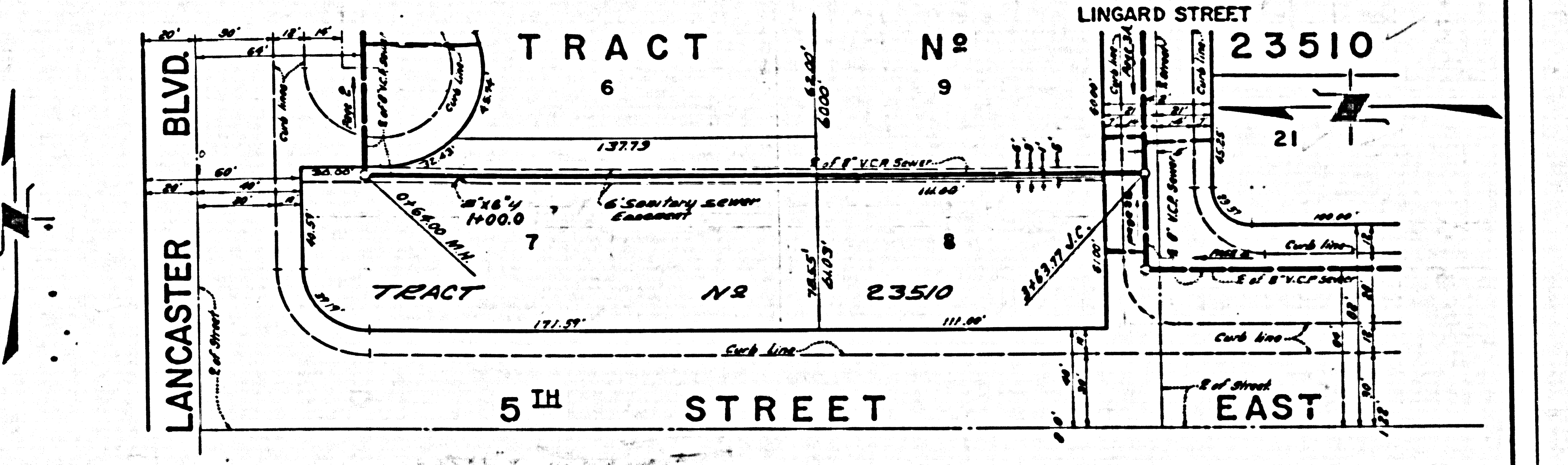
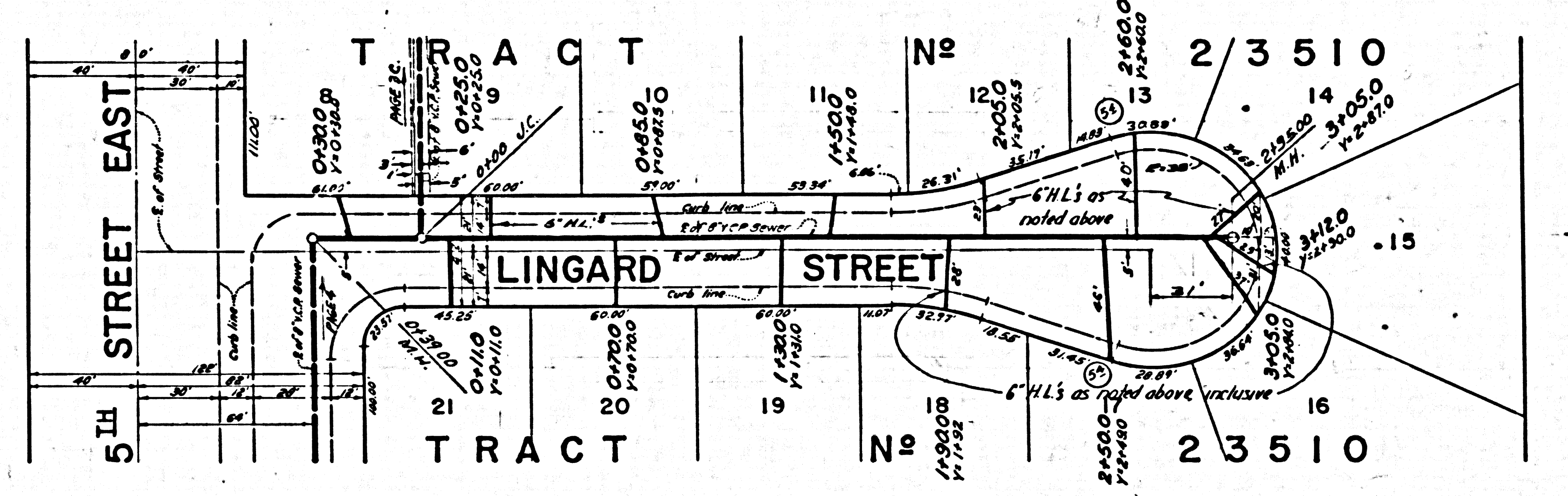
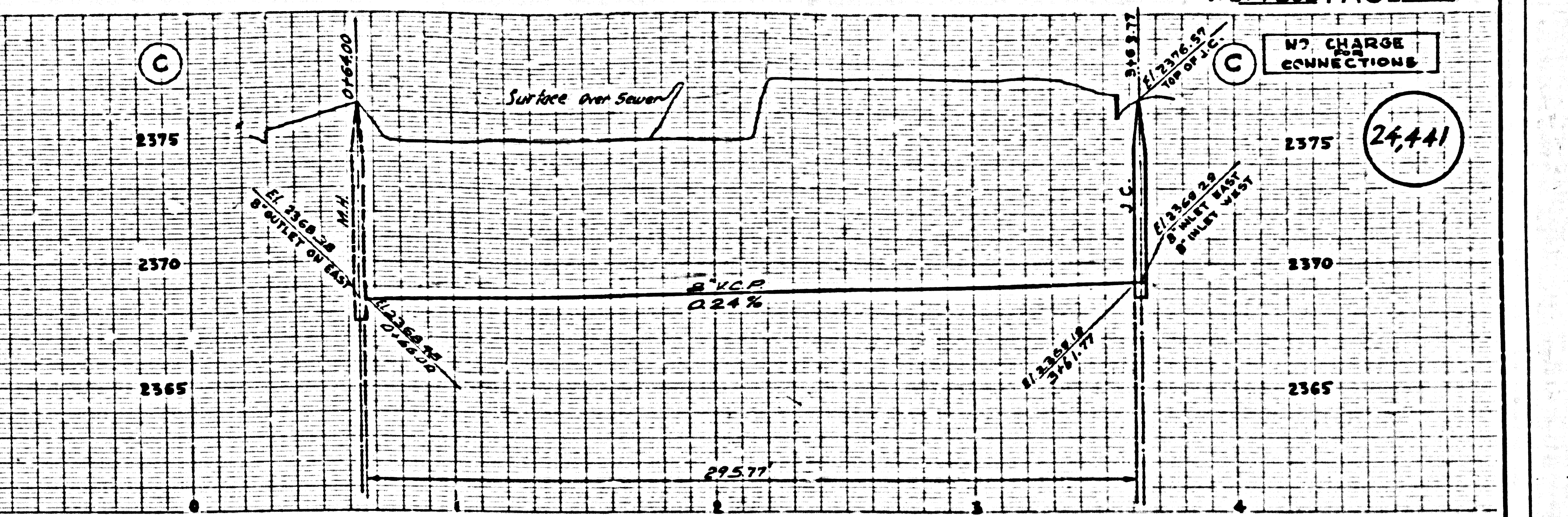
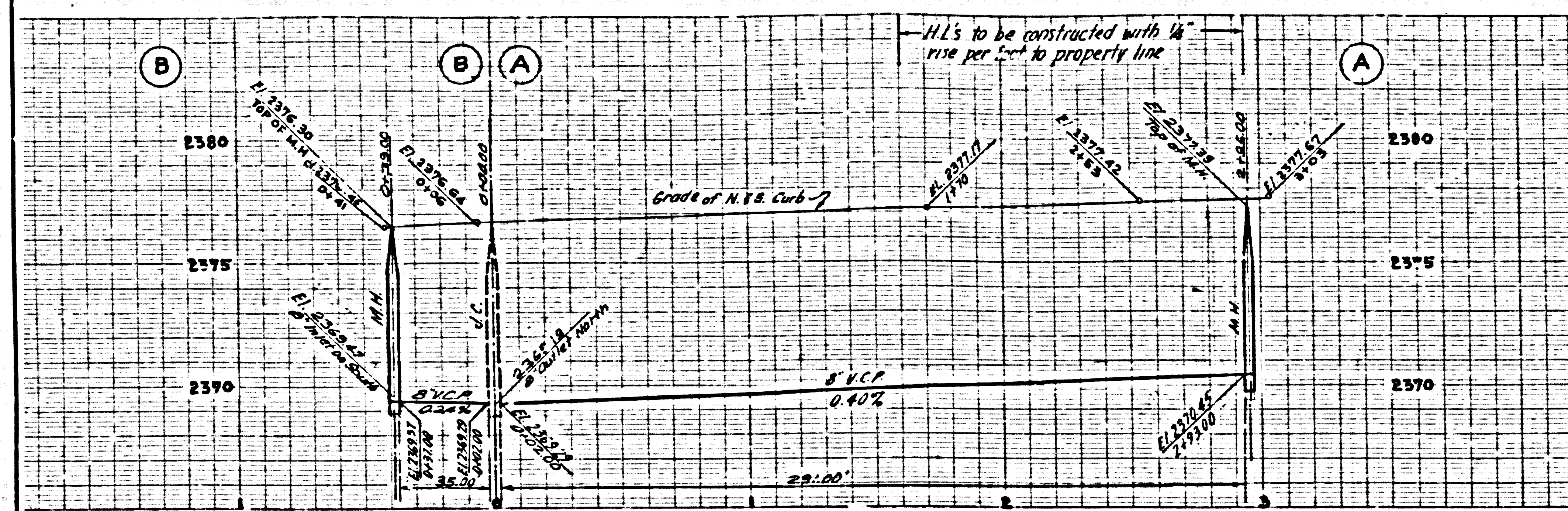
NO CHARGE FOR CONNECTIONS

24440

P.C.4263



check all depths
ad. Conley

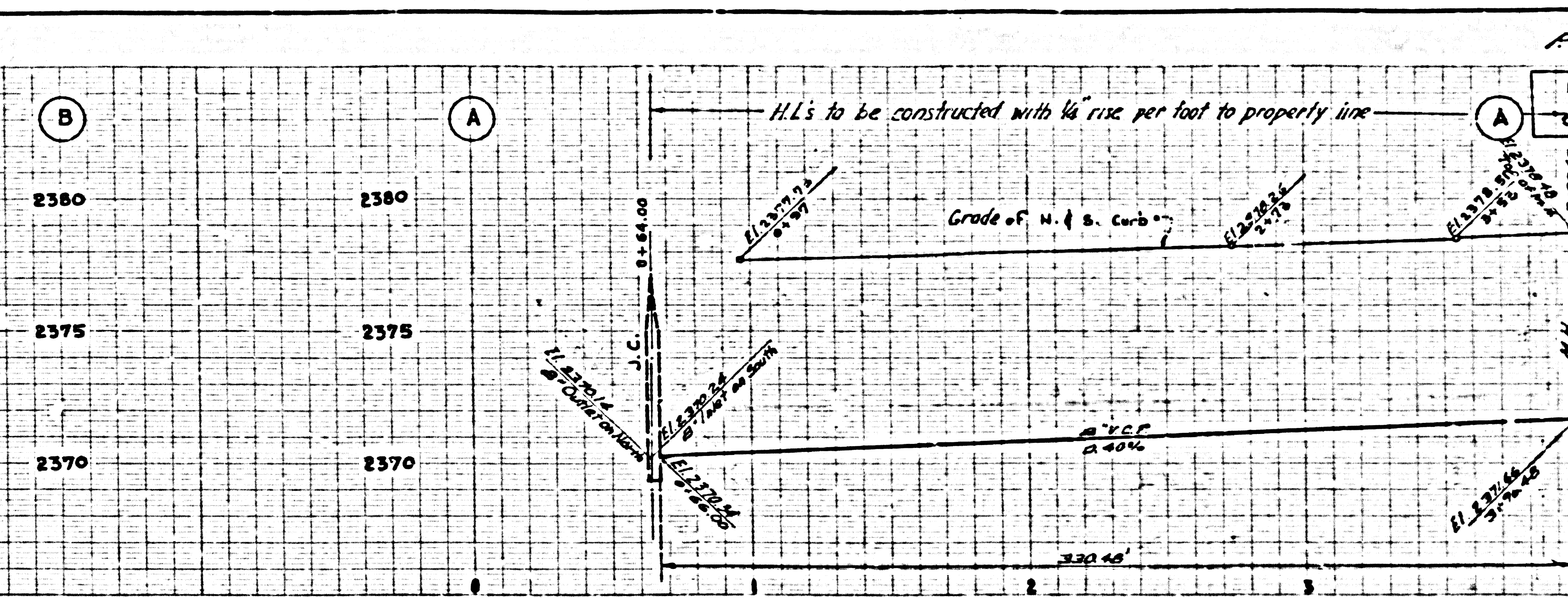
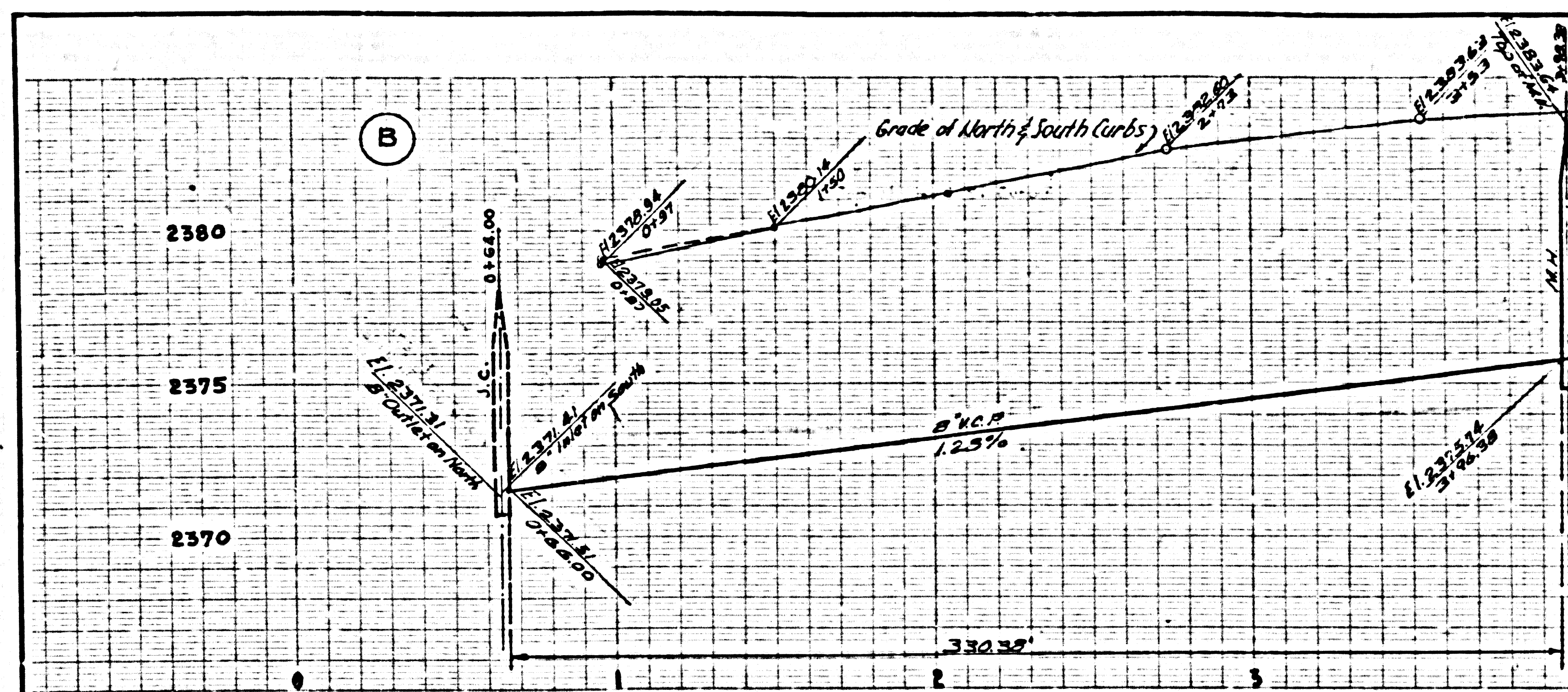


NO CHARGE FOR CONNECTIONS

24,442

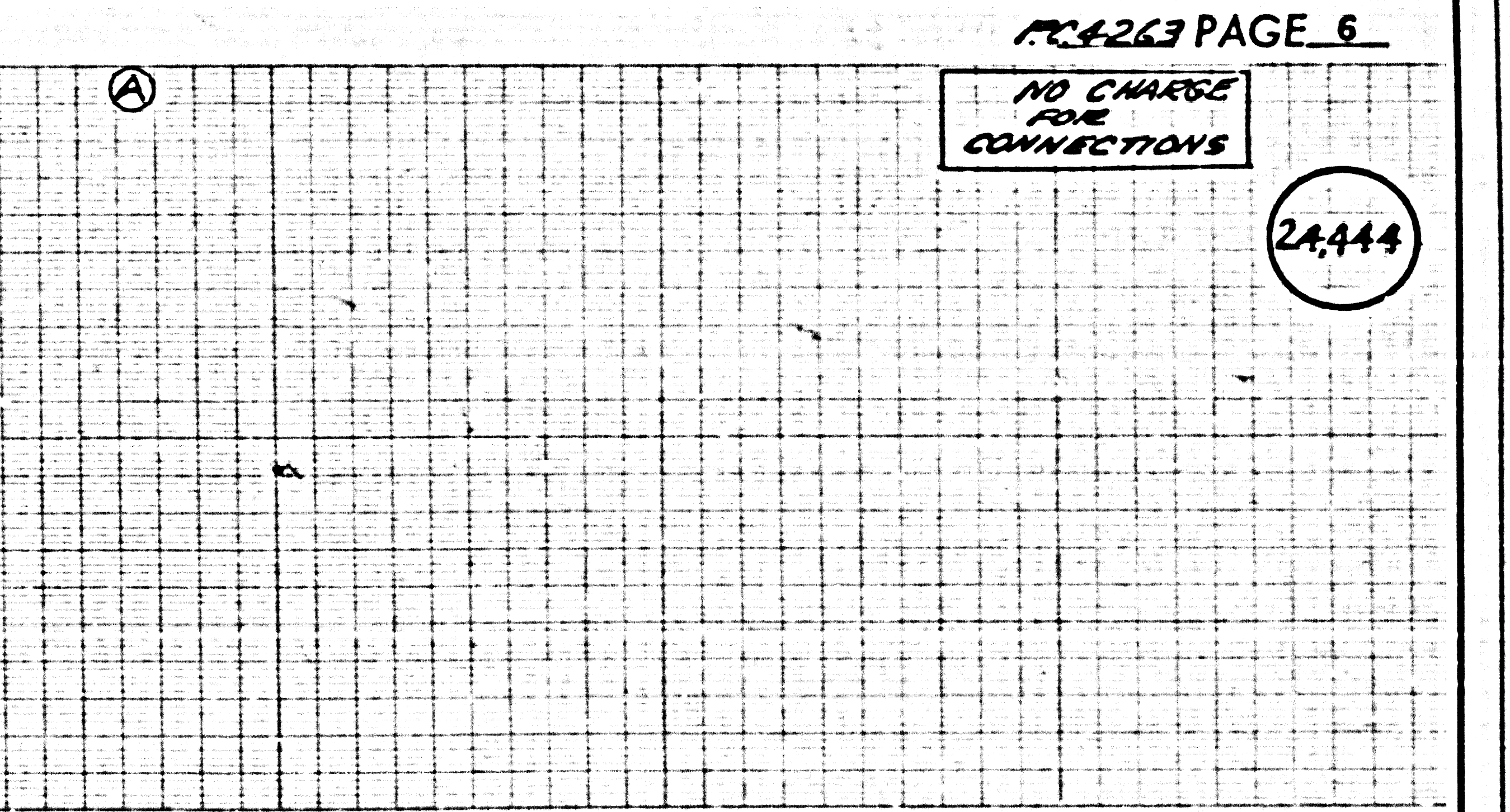
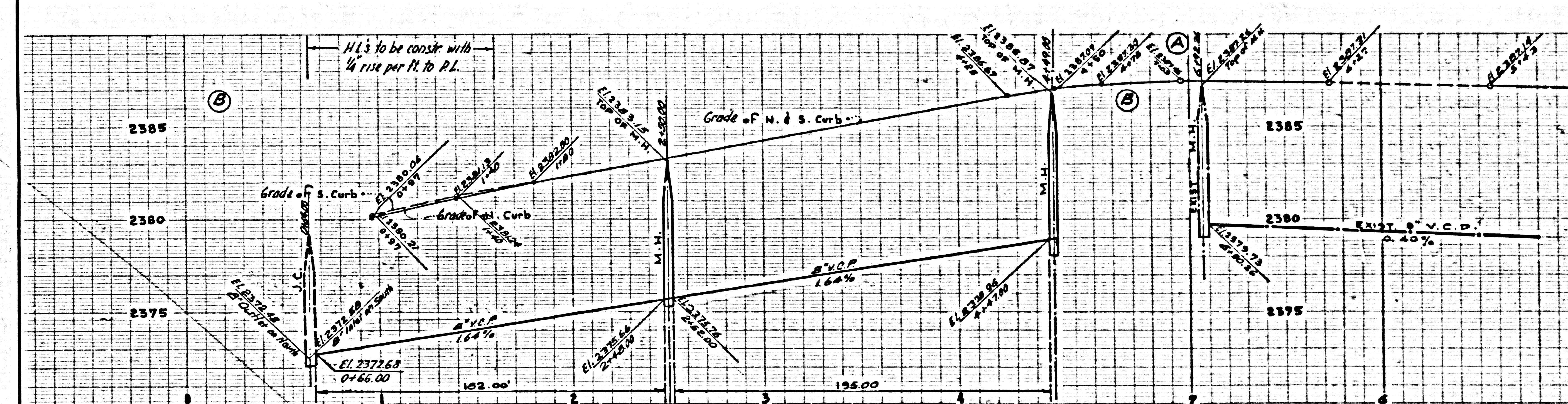
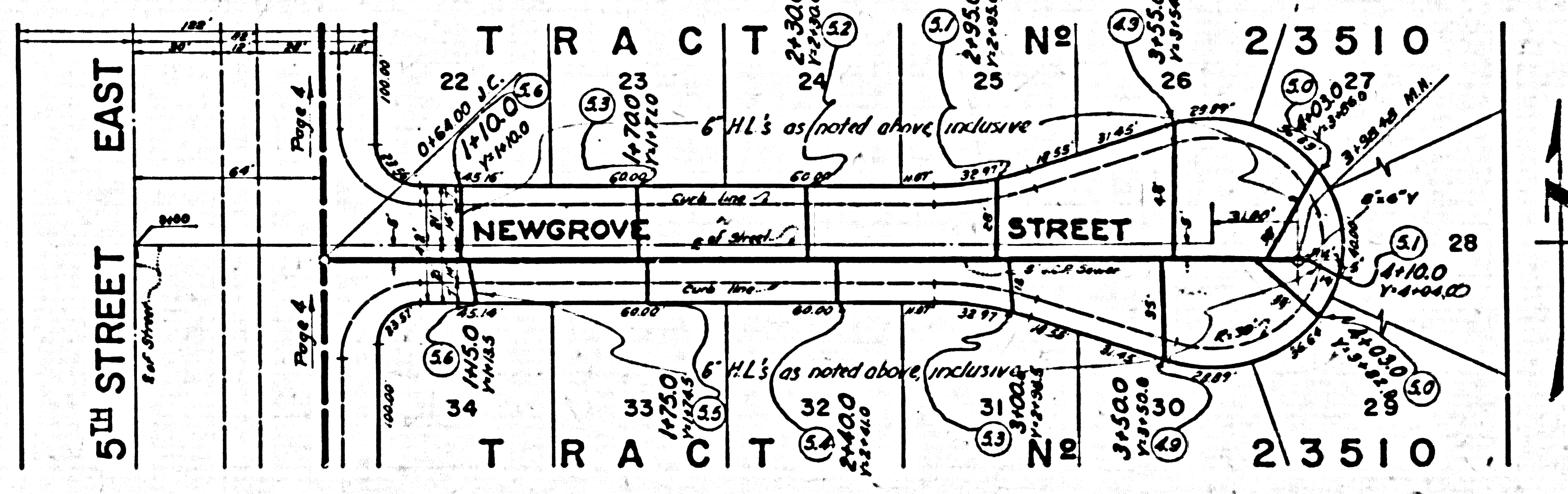
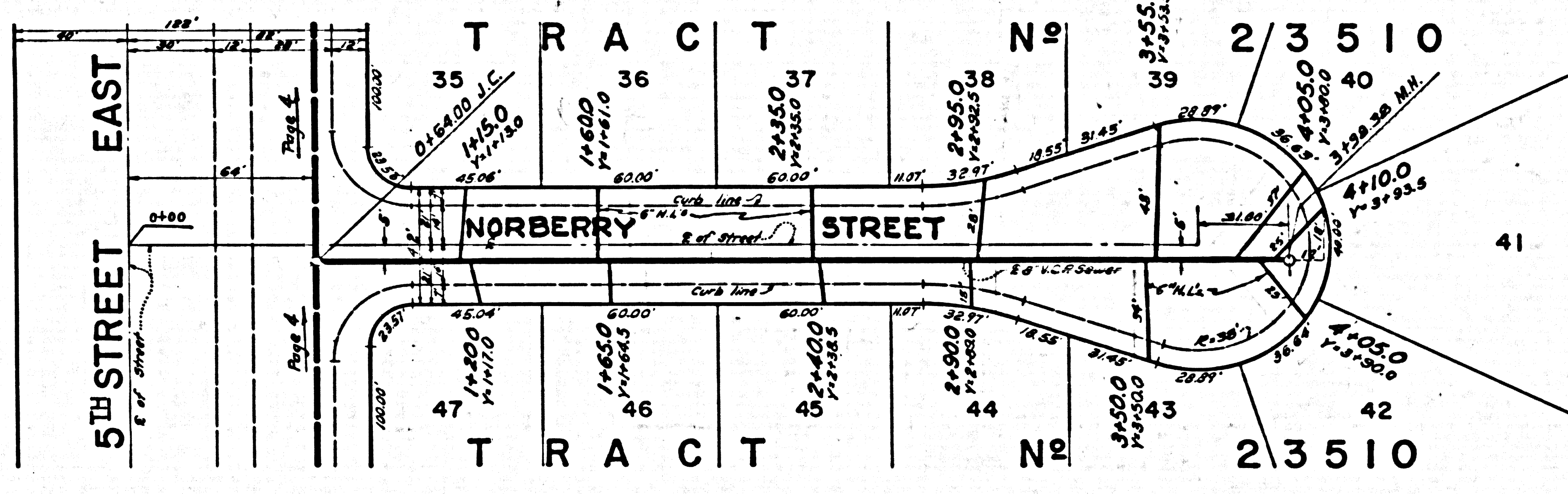
DO NOT ISSUE PERMITS SEE P.C. 3428

PC 4263



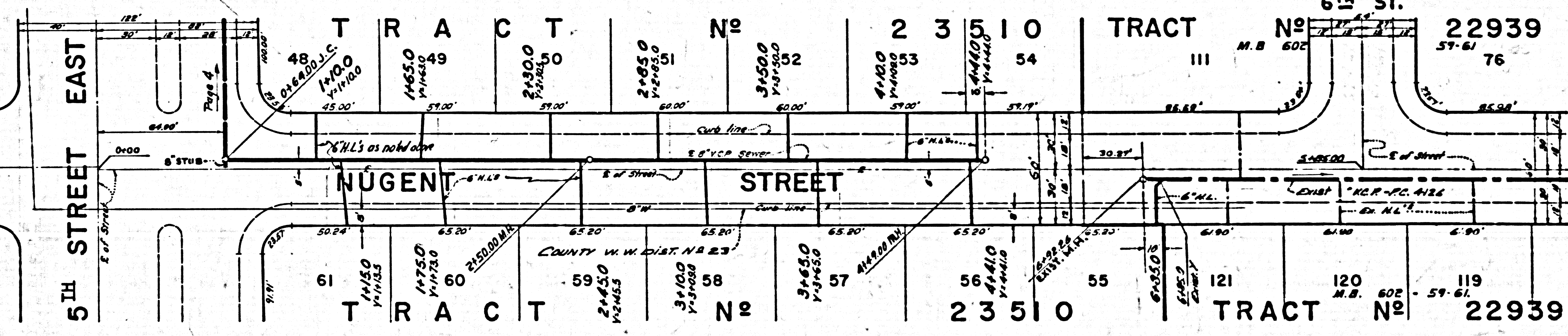
PC 4263 PAGE 5
NO CHARGE FOR CONNECTIONS

24443



PC 4263 PAGE 6
NO CHARGE FOR CONNECTIONS

24444



D.C. 4503