

BENCH MARK
LEAD FACE IN CONC. HEADWALL
OF CULVERT AT N.W. CORNER OF
FRANCISQUITO AVENUE AND
ORANGE AVENUE.
ADJ. 1952 ELEV. 340.67

PUENTE BLDG. DIST. NO. 2

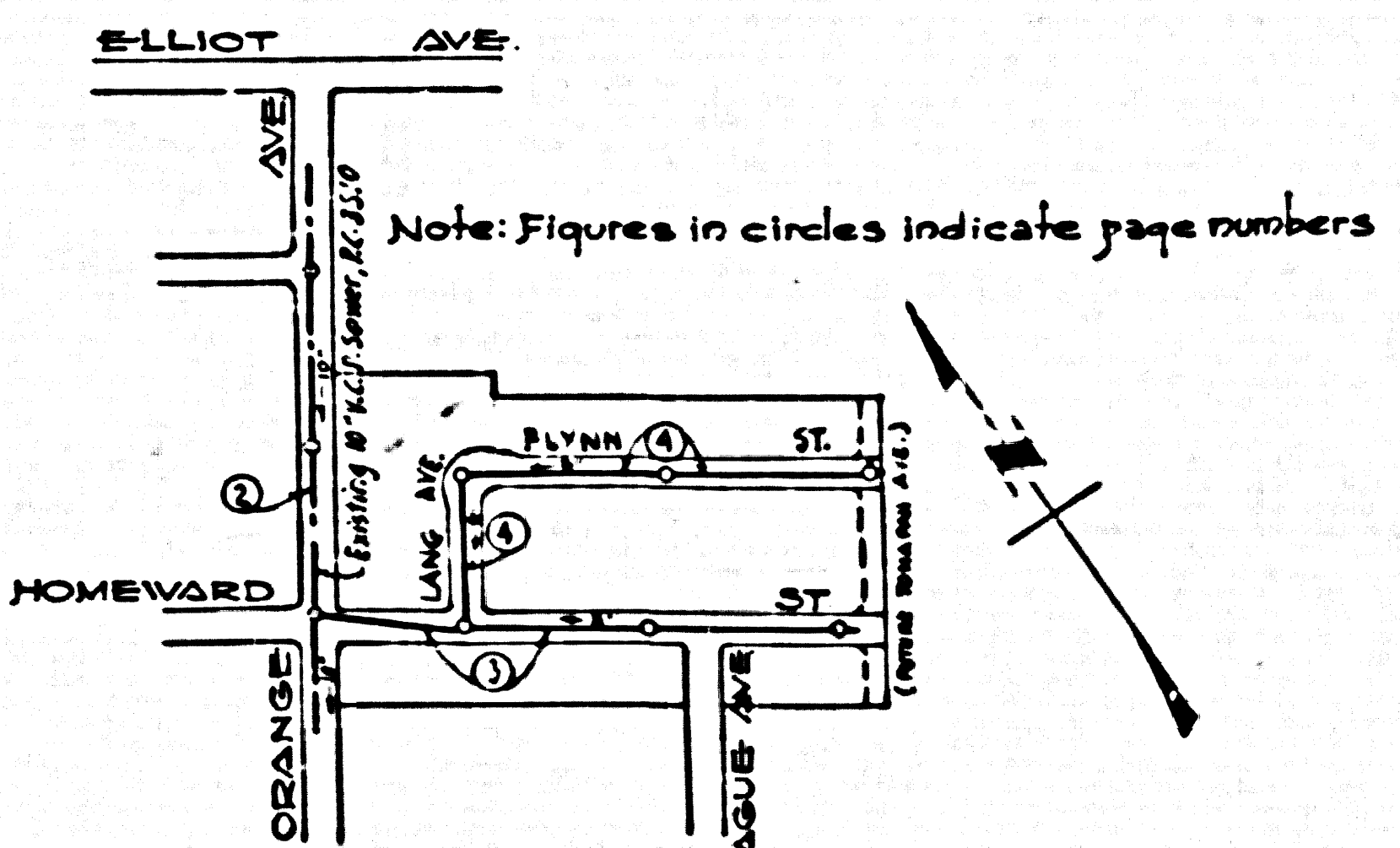
PROFILE ALIGNMENT AND GRADE OF P.C. 4267
SANITARY SEWERS PAGE 1
TO BE CONSTRUCTED IN

TRACT No. 22550
PRIVATE CONTRACT NO. 4267

W.S. 58
- 2 SHEETS, - 4 PAGES
SCALE: 1" = 40' MARCH, 1956

ROSENTHAL ENGINEERING CO.
BY: Arthur S. Rosenthal
REG. C. E. NO. 8505
FOR LEGEND SEE PLAN NO. S-A-64

- NOTES
- PROVIDE STAKES ON THE PROPERTY LINE OR PROPERTY LINES PRODUCED AT RIGHT ANGLES TO THE SEWER LINE AT THE CENTER LINE OF EACH MANHOLE.
 - NO REPRESENTATIVE OF THE CITY ENGINEER WILL SURVEY OR LAYOUT ANY PORTION OF THE WORK.
 - THE OWNER OR HIS AUTHORIZED REPRESENTATIVE SHALL FURNISH THE CITY ENGINEER WITH GRADE SHEETS AND STATION AND PLANNY NUMBERS. ANY CHANGE IN LOCATION SHALL BE REQUESTED BY WRITING BY THE OWNER OR HIS REPRESENTATIVE.
 - NO DIVISIONS SHALL BE MADE IN THESE PLANS WITHOUT THE APPROVAL OF THE CITY ENGINEER.
 - USE STANDARD MANHOLE FRAMES AND COVERS, S-A-117.
 - USE STANDARD STRENGTH PIPE EXCEPT AS NOTED.
 - USE CEMENT MORTAR FOR ALL VITRIFIED CLAY PIPE JOINTS.
 - RESURFACE ALL TRENCH WITHIN PAVED AREA TO MEET L. A. COUNTY ROAD DEPT. OR CALIF. STATE HIGHWAY DEPT. REQUIREMENTS IN ACCORDANCE WITH PERMITS.
 - ENCASE FOUR FEET OF SEWER AT POINTS OF INTERFERENCE WITH POLES, S-A-119.
 - HOUSE LATERALS TO BE CONSTRUCTED WITH INVERTS AT PROPERTY LINE... FEET BELOW CURB GRADE.
 - ALL STRUCTURES SHALL BE BRICK SEWER STRUCTURES, S-A-104.
 - FOR ALLOWABLE LEAKAGE TEST USE FORMULA NO. 2, SPECS. M.C. 8.
- THE PRIVATE ENGINEER IS TO FURNISH THE HOUSE LATERAL DEPTH AT THE PROPERTY LINE BELOW THE TOP OF CURB ELEVATION FOR EACH HOUSE LATERAL, ON THE GRADE SHEET.



INDEX MAP
TRACT No. 22550
P.C. 4267
SCALE: 1" = 400'

NO CHARGE FOR CONNECTIONS
7/27/56 Revised 2-13-57

APPROVED BY
CITY OF LA PUENTE
CITY MANAGER

NOTES

GRADES TO WHICH THIS IMPROVEMENT IS TO BE CONSTRUCTED ARE SHOWN ON PLANS AND PROFILE GRADE POINTS FOR EVERY CURB, CENTER LINE OF STREETS, OR CENTER LINE OF ALLEYS ARE SHOWN BY CIRCLES ON PROFILES. AT ALL POINTS BETWEEN DESIGNATED POINTS THE GRADE SHALL BE ESTABLISHED SO AS TO CONFORM TO A STRAIGHT LINE DRAWN BETWEEN SAID DESIGNATED POINTS.

ELEVATIONS ARE IN FEET ABOVE U.S.C. & G.S. 558A LEVEL DATUM OF 1929.

THIS DRAWING AND THE DATA HEREON ARE HEREBY MADE A PART OF THE SPECIFICATIONS.

WORK SHALL BE CONSTRUCTED ACCORDING TO SPECIFICATIONS ON FILE IN THE OFFICE OF THE CITY ENGINEER AND SHALL BE PROSECUTED ONLY IN THE PRESENCE OF THE CITY ENGINEER.

BEFORE WORK CAN BE STARTED, THE CONTRACTOR MUST OBTAIN A PERMIT TO RELOCATE IN CITY STREETS FROM THE L. A. COUNTY ROAD DEPT., 108 W. 2ND ST. AND MAKE A DEPOSIT WITH THE CITY ENGINEER, ROOM 324 PAN AMERICAN BUILDING, 333 SO BROADWAY SUFFICIENT TO COVER THE COST OF CONSTRUCTION INSPECTION AND RECORD PLANS.

APPROVAL OF THIS PLAN BY THE CITY OF LA PUENTE DOES NOT CONSTITUTE A REPRESENTATION AS TO THE ACCURACY OF THE LOCATION OF OR THE EXISTENCE OR NON-EXISTENCE OF ANY UNDERGROUND UTILITY PIPE, OR STRUCTURE WITHIN THE LIMITS OF THIS PROJECT. THIS NOTE APPLIES TO ALL PAGES.

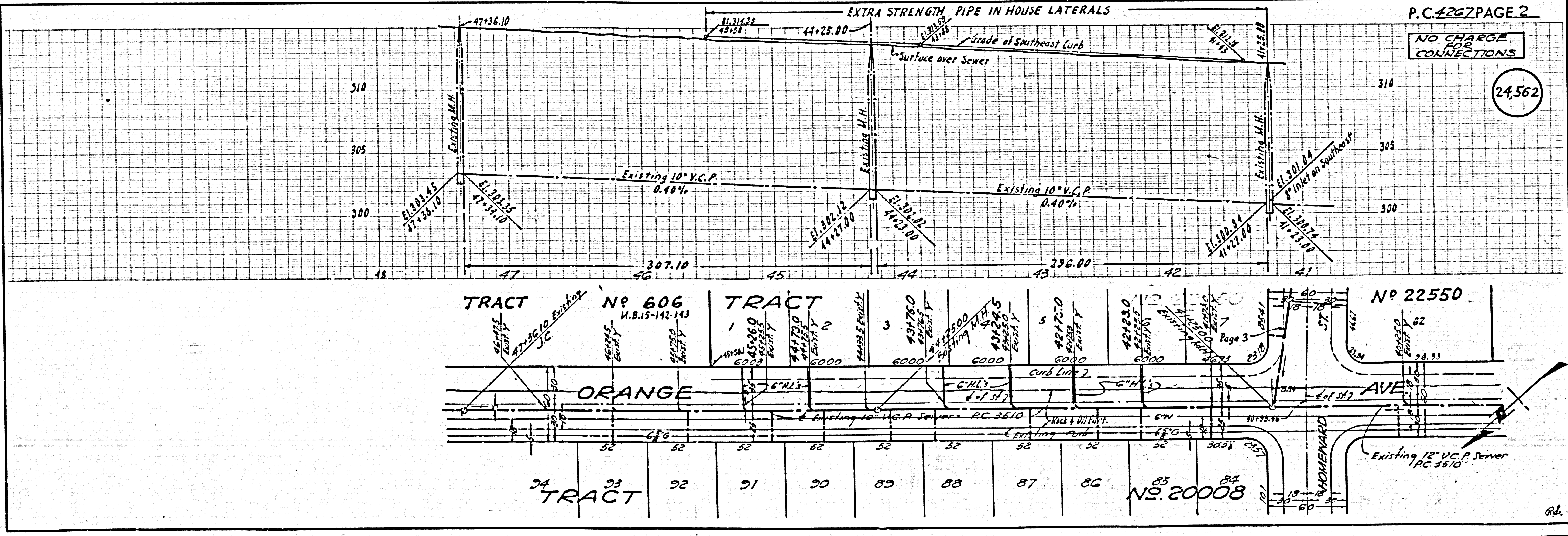
IF WORK IS TO BE DONE IN A STATE HIGHWAY, A PERMIT MUST BE OBTAINED FROM THE STATE OF CALIFORNIA, DIVISION OF HIGHWAYS, 128 SOUTH SPRING STREET.

CITY OF LA PUENTE, CALIFORNIA

APPROVED, JOHN A. LAMBE, CITY ENGINEER
APPROVED, A. M. RAMON, CHIEF ENGINEER

BY: A. Pellini, SANITATION ENGINEER
BY: J. P. ... OFFICE ENGINEER

CHECKED BY: S.K. ... 2-13-57
OFFICE OF CITY ENGINEER, REG. C. E. NO. 3406

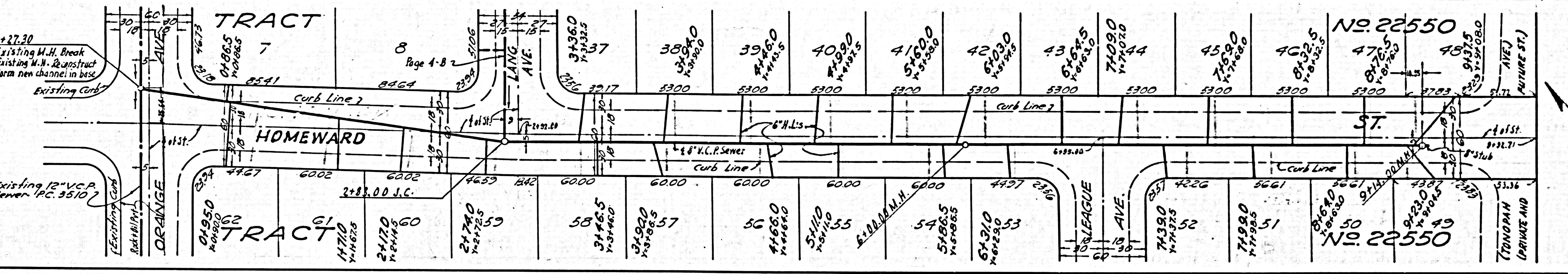
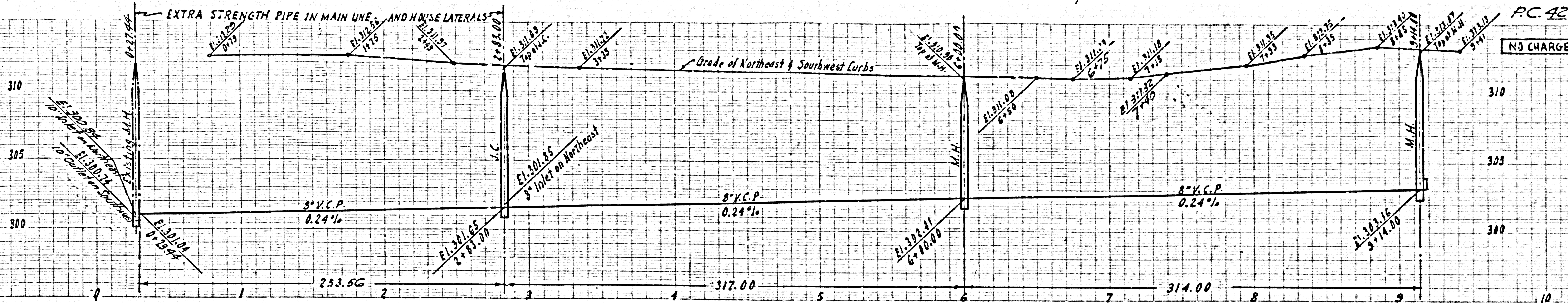


P.C. 4267 PAGE 2
NO CHARGE CONNECTIONS

24,562

NO CHARGE FOR CONNECTIONS

24563



NO CHARGE FOR CONNECTIONS

24564

