

B.M. S.G. 53 El. 646.904  
 117 N. Co. of Cienega Ave. 23'  
 E. of Ch. Sect. N.E. Cor. Grand Ave.

**SAN DIMAS BLDG. DIST. NO. 10**

PROFILE ALIGNMENT AND GRADE OF P.C. 4270  
**SANITARY SEWERS** PAGE 1  
 TO BE CONSTRUCTED IN  
 R/W NORTH OF CIENEGA AVE. (24,356)

- NOTES**
- PROVIDE 2" SIZE ON THE PROPERTY LINE OR PROPERTY LINES PRODUCED AT RIGHT ANGLES TO THE SEWER LINE AT THE CENTER LINE OF EACH MANHOLE.
  - NO REPRESENTATIVE OF THE COUNTY ENGINEER WILL SURVEY OR LAYOUT ANY PORTION OF THE WORK.
  - THE OWNER OF THE AUTHORIZED REPRESENTATIVE SHALL FURNISH THE COUNTY ENGINEER WITH GRADE SHEETS AND STATION FOR ALL HOUSE LATERALS AND Y BRANCHES AND SHALL PROVIDE STAKE FOR THEM AT THESE PROPER LOCATIONS WITH STATIONING PLAINLY MARKED. ANY CHANGE IN LOCATION SHALL BE REQUESTED BY WRITING BY THE OWNER OR HIS REPRESENTATIVE.
  - NO REVISIONS SHALL BE MADE IN THESE PLANS WITHOUT THE APPROVAL OF THE COUNTY ENGINEER.
  - USE STANDARD MANHOLE FRAMES AND COVERS, S.A-117, EXCEPT AS NOTED.
  - USE STANDARD STEEL-ROTH PIPE EXCEPT AS NOTED.
  - USE CEMENT MORTAR FOR ALL VITRIFIED CLAY PIPE JOINTS.
  - RESURFACE ALL TRENCH WITHIN PAVED AREA TO MEET L.A. COUNTY ROAD DEPT., OR CALIF. STATE HIGHWAY DEPT. REQUIREMENTS IN ACCORDANCE WITH PERMITS.
  - SHOULDER FOUR FEET OF SEWER AT POINTS OF INTERFERENCE WITH POLES, S.A-119.
  - SHOULDER SHALLOWS TO BE CONSTRUCTED WITHIN 40' PROPERTY LINE. FIRST SHOW-UP SHALL BE EXCEPT AS NOTED.
  - ALL STRUCTURES SHALL BE BRICK SEWER STRUCTURES, S.A-104, EXCEPT AS NOTED.
  - FOR ALLOWABLE LEAKAGE TEST USE FORMULA NO. 1, S.P.C.S., SEC. II.
  - MANHOLE TOPS IN IMPROVED RIGHTS-OF-WAY TO BE 6" ABOVE FINISHED GRADE.

**PRIVATE CONTRACT NO. 4270**

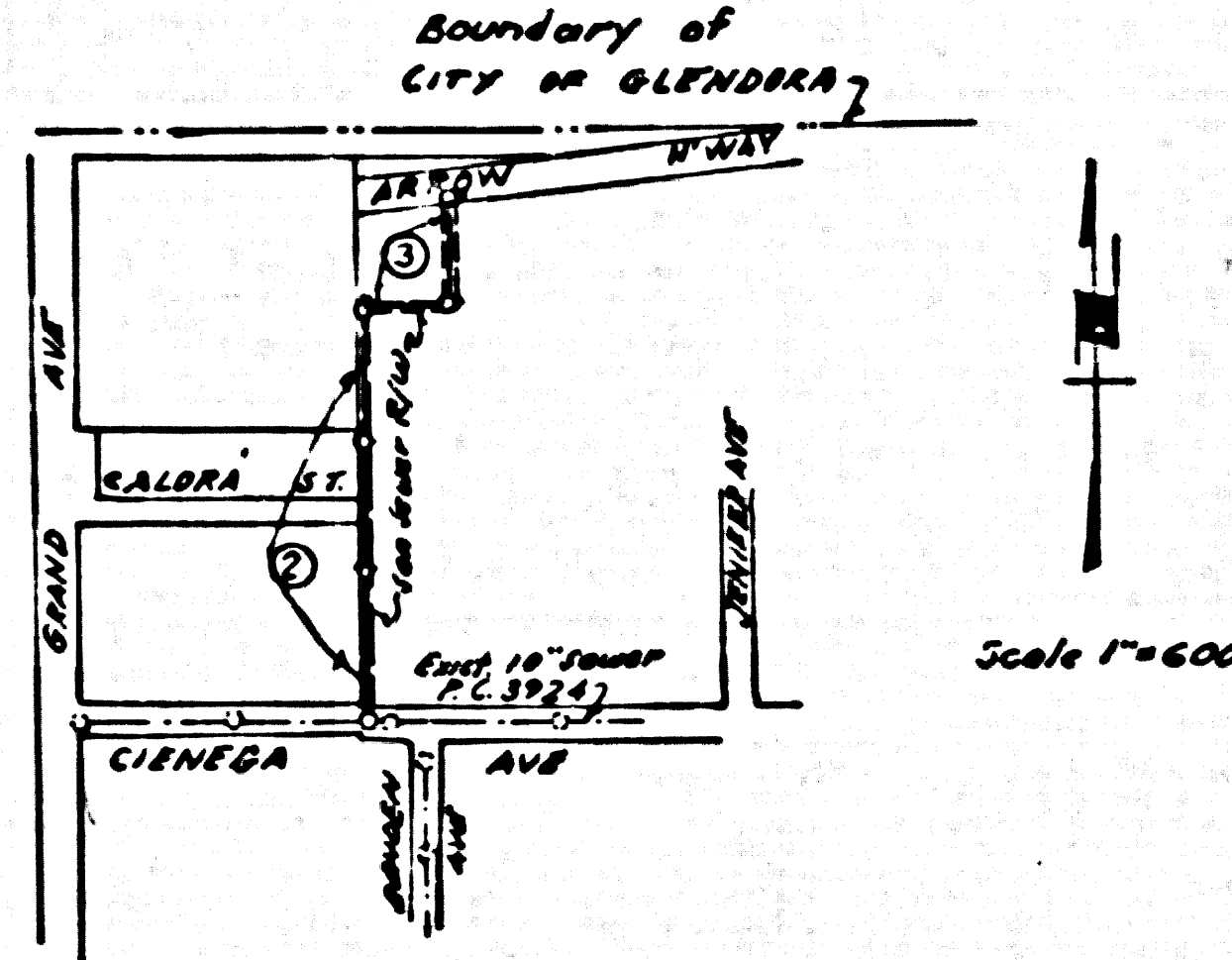
W.S. 48  
 2 SHEETS, 3 PAGES

SCALE: VERT. 1" = 4' HORIZ. 1" = 40' DEC. 1956

PREPARED IN THE OFFICES OF HAROLD L. JOHNSON

By *Harold L. Johnson* 12/1/57  
 REG. C. E. NO. 2667

FOR LEGEND SEE PLAN NO. S-A-64



COLLECT CHARGES AS INDICATED  
*24,357*

INDEX MAP P.C. 4270

**POPE**

GRADES TO WHICH THIS IMPROVEMENT IS TO BE CONSTRUCTED ARE SHOWN ON PLANS AND PROFILES. GRADE POINTS FOR TOP OF CURB, CENTER LINE OF STREET, OR CENTER LINE OF ALLEY ARE SHOWN BY CIRCLES ON PROFILES AT ALL POINTS BETWEEN DESIGNATED POINTS THE GRADE SHALL BE ESTABLISHED SO AS TO CONFORM TO A STRAIGHT LINE BETWEEN SAID DESIGNATED POINTS.

ELEVATIONS ARE IN FEET ABOVE U.S.C.B.S. SEA LEVEL DATUM OF 1929.

THIS DRAWING AND THE DATA HEREON ARE HEREBY MADE A PART OF THE SPECIFICATIONS.

WORK SHALL BE CONSTRUCTED ACCORDING TO SPECIFICATIONS ON FILE IN THE OFFICE OF THE COUNTY ENGINEER AND SHALL BE PROSECUTED ONLY IN THE PRESENCE OF THE COUNTY ENGINEER.

BEFORE WORK CAN BE STARTED, THE CONTRACTOR MUST OBTAIN A PERMIT TO EXCAVATE IN COUNTY SEWER FROM THE L.A. COUNTY ROAD DEPT., 186 W. 2ND ST. AND MAKE A DEPOSIT WITH THE COUNTY ENGINEER, ROOM 234 SAN AMERICAN BUILDING, 330 SO. HOUGHWAY AVENUE TO COVER THE COST OF CONSTRUCTION INSPECTION AND RECORD PLANS.

APPROVAL OF THIS PLAN BY THE COUNTY OF LOS ANGELES DOES NOT CONSTITUTE A REPRESENTATION AS TO THE ACCURACY OF THE LOCATION OF OR THE EXISTENCE OR NON-EXISTENCE OF ANY UNDERGROUND UTILITY PIPE, OR STRUCTURE WITHIN THE LIMITS OF THE PROJECT. THIS NOTE APPLIES TO ALL PAGES.

IF WORK IS TO BE DONE IN A STATE HIGHWAY, A PERMIT MUST BE OBTAINED FROM THE STATE OF CALIFORNIA, DIVISION OF HIGHWAYS, 128 SOUTH SPRING STREET.

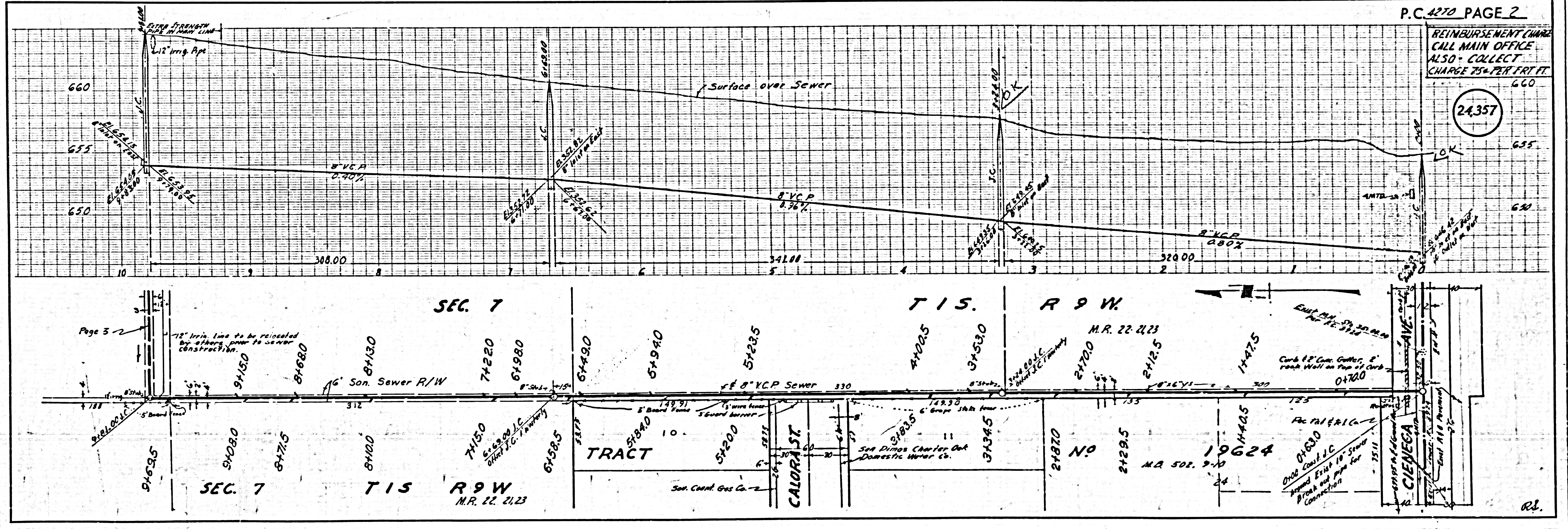
**COUNTY OF LOS ANGELES, CALIFORNIA**

APPROVED, JOHN A. LAMBE, COUNTY ENGINEER  
 APPROVED, A. M. BAWN, CHIEF ENGINEER

BY *A. P. Collins* SANITATION ENGINEER  
 BY *A. M. Bawn* CHIEF ENGINEER

CHECKED BY *W. W. White* 3-2-57  
 OFFICE OF COUNTY ENGINEER, BLDG. C. E. NO. 3486

APPROVED BY *Arthur V. Ketchum* INDUSTRIAL WASTE DIVISION  
 DATE 7/9/57



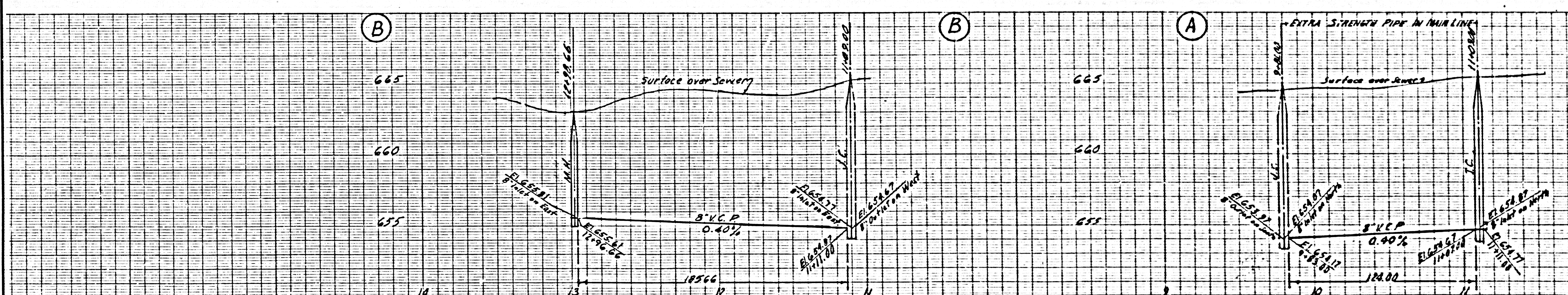
P.C. 4270 PAGE 2

REIMBURSEMENT CHARGE  
 CALL MAIN OFFICE  
 ALSO COLLECT  
 CHARGE 75¢ PER FT. RT.

(24,357)

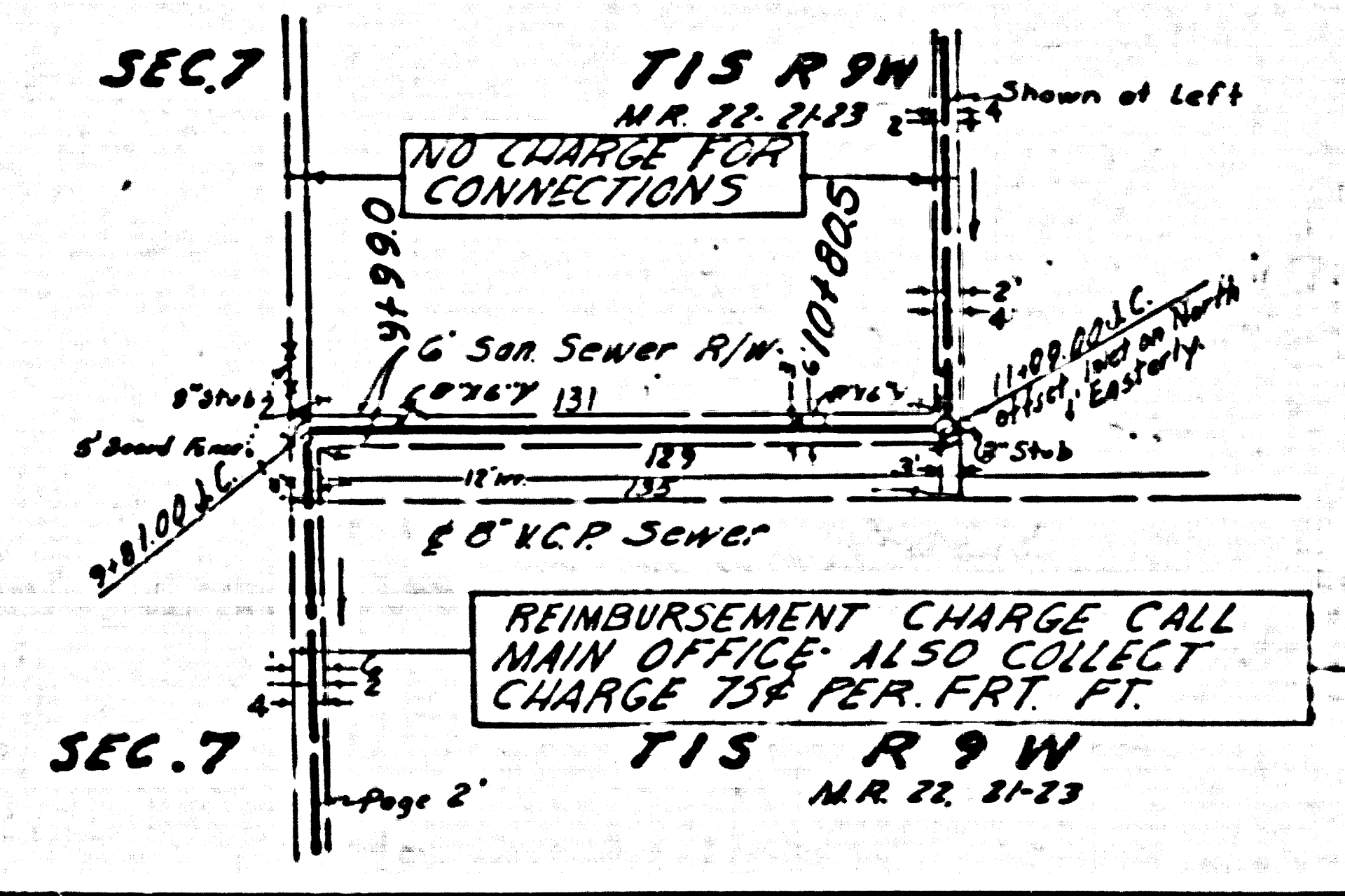
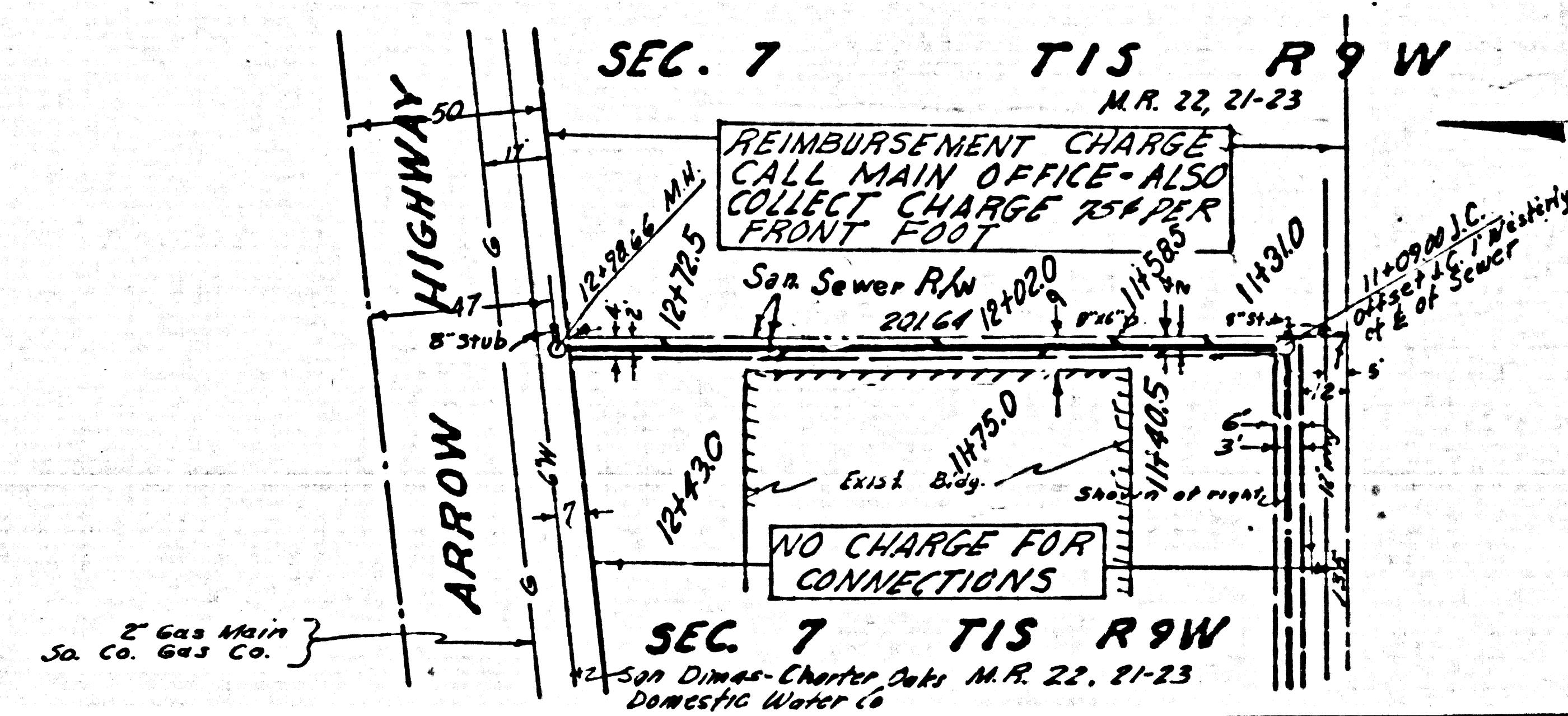
RL





(A) COLLECT CHARGES AS INDICATED

665 24.358



REL