

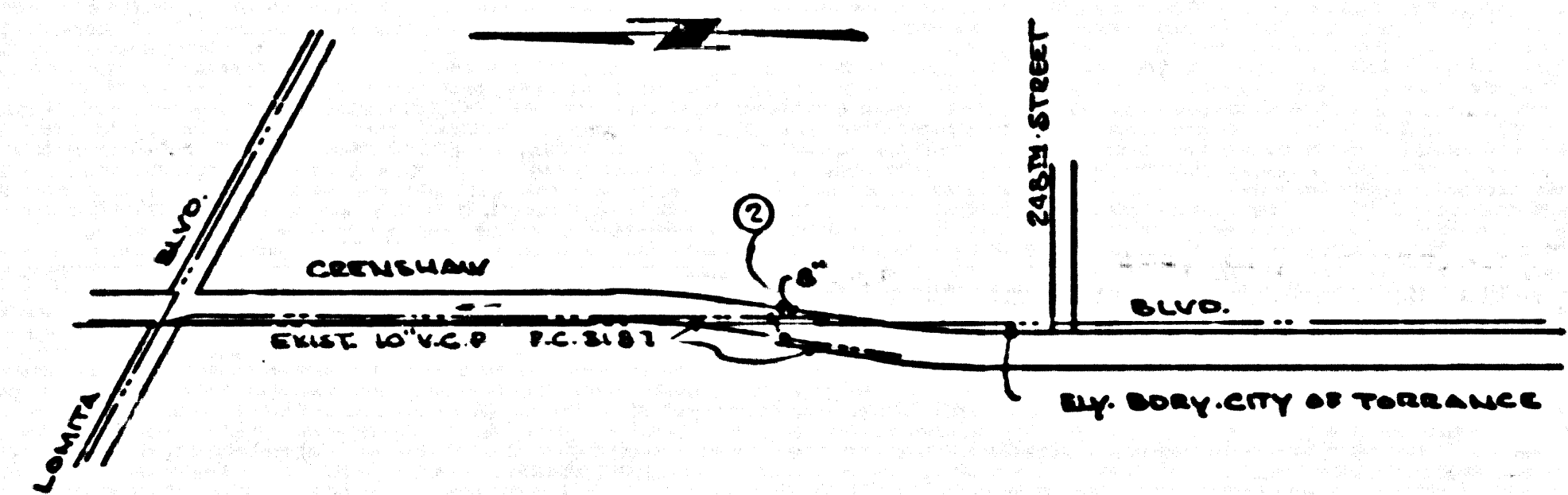
L.OMITA BLDG. DIST. NO. 7/

PROFILE ALIGNMENT AND GRADE OF P.C. 4271
SANITARY SEWERS PAGE 1
 TO BE CONSTRUCTED IN
 CRENSHAW BLVD. (24519)

- NOTES:
 PROVIDE STAKES ON THE PROPERTY LINE OR PROPERTY LINES PRODUCED AT RIGHT ANGLES TO THE SEWER LINE AT THE CENTER LINE OF EACH MANHOLE.
 NO REPRESENTATIVE OF THE COUNTY ENGINEER WILL SURVEY OR LAYOUT ANY PORTION OF THE WORK.
 THE OWNER OR HIS AUTHORIZED REPRESENTATIVE SHALL FURNISH THE COUNTY ENGINEER WITH GRADE SHEETS AND STATIONING FOR ALL HOUSE LATERALS AND Y BRANCHES AND SHALL PROVIDE STAKES FOR THEM AT THEIR PROPER LOCATIONS WITH STATIONING PLAINLY MARKED. ANY CHANGE IN LOCATION SHALL BE REQUESTED IN WRITING BY THE OWNER OR HIS REPRESENTATIVE.
 NO REVISIONS SHALL BE MADE IN THESE PLANS WITHOUT THE APPROVAL OF THE COUNTY ENGINEER.
- USE STANDARD MANHOLE FRAMES AND COVERS, S-A-117, EXCEPT AS NOTED.
 - USE STANDARD STRENGTH PIPE EXCEPT AS NOTED.
 - USE CEMENT MORTAR FOR ALL VITRIFIED CLAY PIPE JOINTS.
 - RESURFACE ALL TRENCH WITHIN PAVED AREA TO MEET L. A. COUNTY ROAD DEPT., OR CALIF. STATE HIGHWAY DEPT. REQUIREMENTS, IN ACCORDANCE WITH PERMITS.
 - SHOULDER FOUR FEET OF SEWER AT POINTS OF INTERFERENCE WITH POLES, S-A-119.
 - HOUSE LATERALS TO BE CONSTRUCTED WITH 1/4" RISE AT PROPERTY LINE TO 1/8" RISE BELOW CURB GRADE EXCEPT AS NOTED.
 - ALL STRUCTURES SHALL BE BRICK SEWER STRUCTURE, S-A-104, EXCEPT AS NOTED.
 - FOR ALLOWABLE LEAKAGE TEST USE FORMULA NO. 1, SPEC. SEC. 54.
 - MANHOLE TOPS IN UNIMPROVED HIGHWAYS TO BE 6" ABOVE FINISHED GRADE.
 - THE PRIVATE ENGINEER IS TO FURNISH THE HOUSE LATERAL DEPTH AT THE PROPERTY LINE BELOW THE TOP OF GULCH ELEVATION FOR EACH HOUSE LATERAL, ON THE GRADE SHEET.

PRIVATE CONTRACT NO. 4271

W.S. 27
 1 SHEET 2 PAGES
 SCALE: VERT. 1" = 4' HORIZ. 1" = 40'
 DECEMBER, 1956
 PREPARED IN THE OFFICE OF
NATIONAL ENGINEERING CO.
Edmund J. Epperson
 REG. E. NO. 58310
 FOR LEGEND SEE PLAN NO. S-A-64



INDEX MAP
 SCALE 1" = 600'
 P.C. 4271

BENCH MARK:
 S.M. 112 L.A. CO. 10th WEST CONSTRUCTION CLEARLY FOR EACH CONTRACT TIE.
 LEAD STAKE ON WEST SIDE OF CONCRETE CURB OF SEWER M.H. NEAR 424th STREET 10' EAST OF INTERSECTION OF 24th STREET & CRENSHAW BLVD.
 ELEV. 80.975

NO CHARGE FOR CONNECTIONS
 J. Curtis 12-20-56

REVISION OF M.M. @ STATION 2+85.40
 PAGE 2
 APPROVED BY: *J.K. Wade* 12-57
 OFFICE OF COUNTY ENGINEER, REC. C.E. 5466

APPROVED FOR DISCHARGE
Paul W. Riedel 12/1/56
 CITY OF TORRANCE CITY ENGINEER

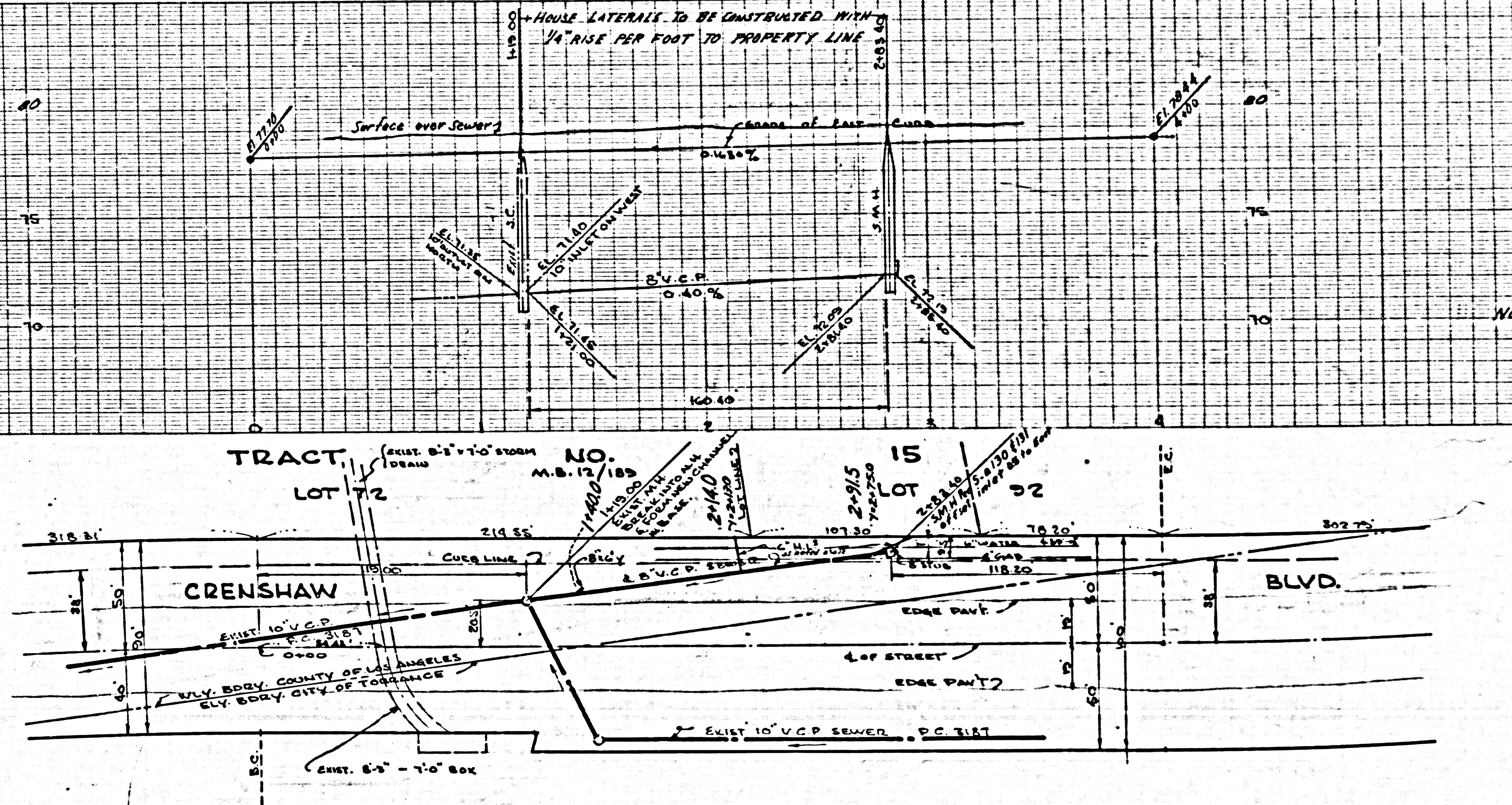
NOTE:
 GRADES TO WHICH THIS IMPROVEMENT IS TO BE CONSTRUCTED ARE SHOWN ON PLANS AND PROFILE. GRADE POINTS FOR TOP OF CURB, CENTER LINE OF STREET, OR CENTER LINE OF ALLEY ARE SHOWN BY CIRCLES ON PROFILES. AT ALL POINTS BETWEEN INDICATED POINTS THE GRADE SHALL BE ESTABLISHED SO AS TO CONFORM TO A STRAIGHT LINE DRAWN BETWEEN SAID INDICATED POINTS.
 ELEVATIONS ARE IN FEET ABOVE U.S.C. & G.S. SEA LEVEL. DATUM OF 1929.
 THE RELIANCE AND THE DATA HEREON ARE HEREBY MADE A PART OF THE SPECIFICATIONS.
 WORK SHALL BE CONSTRUCTED ACCORDING TO SPECIFICATIONS ON FILE IN THE OFFICE OF THE COUNTY ENGINEER AND SHALL BE PROSECUTED ONLY IN THE PRESENCE OF THE COUNTY ENGINEER.
 WHEN WORK CAN BE STARTED, THE CONTRACTOR MUST OBTAIN A PERMIT TO OCCUPY IN COUNTY STREETS FROM THE COUNTY ROAD DEPT., 180 W. 3RD ST. AND MAKE A DEPOSIT WITH THE COUNTY ENGINEER, ROOM 1204 PINE STREET, SAN FRANCISCO, CALIF. 94109, SUFFICIENT TO COVER THE COST OF CONSTRUCTION INSPECTION AND RECORD PLANS.
 APPROVAL OF THIS PLAN BY THE COUNTY OF LOS ANGELES DOES NOT CONSTITUTE A REPRESENTATION AS TO THE ACCURACY OF THE LOCATION OF OR THE EXISTENCE OR NON-EXISTENCE OF ANY UNDERGROUND UTILITY PIPE, OR STRUCTURE WITHIN THE LIMITS OF THIS PROJECT. THE NOTE APPLIES TO ALL PAGES.
 IF WORK IS TO BE DONE IN A STATE HIGHWAY, A PERMIT MUST BE OBTAINED FROM THE STATE OF CALIFORNIA, DIVISION OF HIGHWAYS, 128 SOUTH SPRING STREET.

COUNTY OF LOS ANGELES, CALIFORNIA
 APPROVED, JOHN A. LAMME, COUNTY ENGINEER
 APPROVED, A. M. RAWN, CHIEF ENGINEER
 CO. 4271 SHEET NO. 1
A.P. Collins SANITARIAN ENGINEER
 BY *E. J. Williams* OFFICE ENGINEER
 CHECKED BY *P.S. Fisher* 12-19-56
 OFFICE OF COUNTY ENGINEER, REG. C. E. NO. 7860

P.C. 4271 PAGE 2

NO CHARGE FOR CONNECTIONS

(24520)



NOTE: THE MAIN LINE SEWER CANNOT BE EXTENDED FURTHER SOUTH WITHOUT FIRST OBTAINING CITY OF TORRANCE APPROVAL FOR ADDITIONAL CAPACITY