

BELFLOWER BLDG. DIST. NO. 4

PROFILE ALIGNMENT AND GRADE OF P.C. 4272
 SANITARY SEWERS PAGE 1
 TO BE CONSTRUCTED IN
 A
 SANITARY SEWER R/W (24,362)

B.M. D-27, Elev. 76.791, F.B. 1162 -Pg. 161
 Rosecrans Ave. & Anderson St., S.W. cor.
 69' W. & 47' S. of E. l.f.
 Bl. Spk. in N.E. cor. conc. driveway

- NOTES:
1. PROFILE STAKES ON THE PROPERTY LINE OR PROPERTY LINES SHALL BE PLACED AT RIGHT ANGLES TO THE SEWER LINE AT THE CENTER LINE OF EACH MANHOLE.
 2. NO REPRESENTATIVE OF THE CITY ENGINEER WILL SURVEY OR LAYOUT ANY PORTION OF THE WORK.
 3. THE OWNER OR HIS AUTHORIZED REPRESENTATIVE SHALL FURNISH THE CITY ENGINEER WITH GRADE SHEETS AND STATIONING FOR ALL HOUSE LATERALS AND Y BRANCHES AND SHALL PROVIDE STAKES FOR THEM AT THEIR PROPER LOCATIONS WITH STATIONING PLAINLY MARKED. ANY CHANGE IN LOCATION SHALL BE REQUESTED BY WRITING BY THE OWNER OR HIS REPRESENTATIVE.
 4. NO REVISIONS SHALL BE MADE IN THESE PLANS WITHOUT THE APPROVAL OF THE CITY ENGINEER.
 5. USE STANDARD MANHOLE FRAMES AND COVERS, S.A. 117.
 6. USE STANDARD STRENGTH PIPE.
 7. USE AMPHY COMPENSATOR FOR ALL VIT-10 CLAY PIPE JOINTS.
 8. RESURFACE ALL TRENCHES WITHIN PAVED AREAS TO MEET PARAMOUNT ROAD DEPT., OR CALIF. STATE HIGHWAY DEPT. REQUIREMENTS IN ACCORDANCE WITH PERMITS.
 9. BRACE FOUR FEET OF SEWER AT POINTS OF INTERFERENCE WITH POLES, S.A. 119.
 10. HOUSE LATERALS TO BE CONSTRUCTED WITH INVERTS AT PROPER LINE $\frac{1}{8}$ FEET BELOW $\frac{1}{2}$ INCHES BELOW AS NOTED.
 11. ALL STRUCTURES SHALL BE BRICK SEWER STRUCTURES, S.A. 104.
 12. FOR ALLOWABLE LEAKAGE TEST USE FORMULA NO. 2, SPECS. SEC. 84.
 13. MANHOLE TOPS IN UNPAVED AREAS SHALL BE 1'-0" ABOVE FINISHED GRADE.

PRIVATE CONTRACT NO. 4272

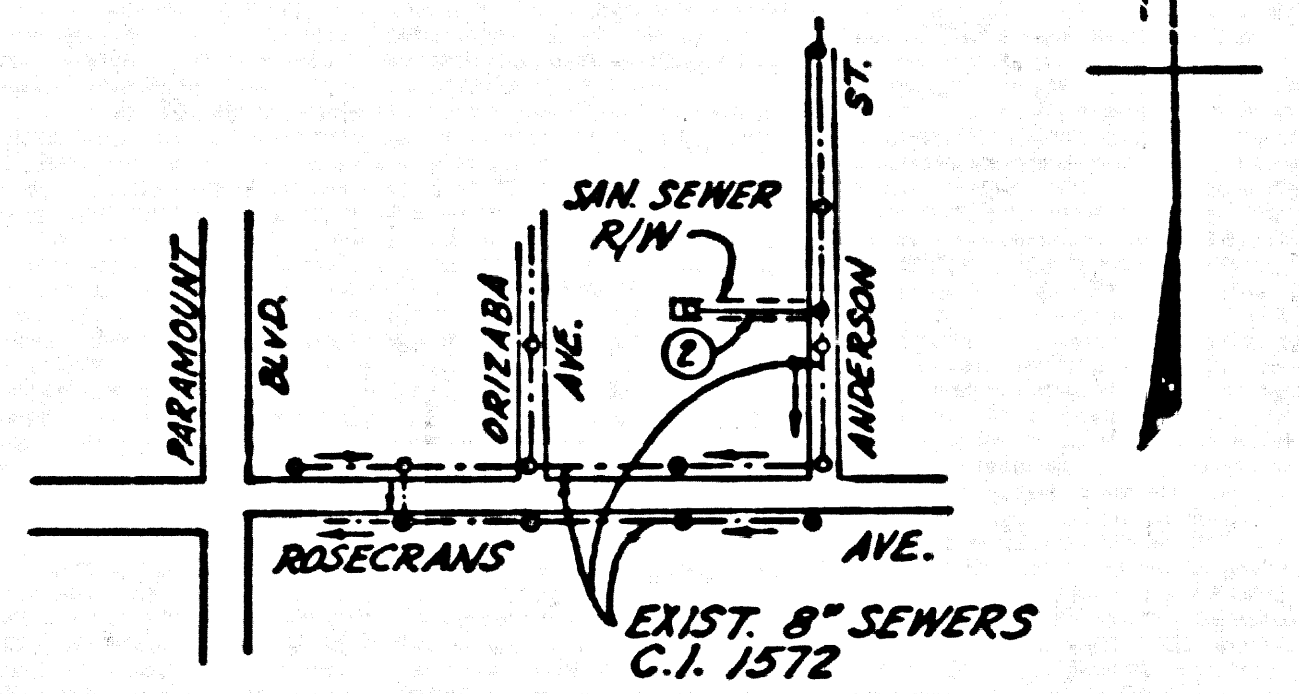
W.S. 32
 ONE SHEETS, TWO PAGES
 SCALE: HORIZ. 1" = 40' VERT. 1" = 4'
 JANUARY, 1957
 PREPARED IN THE OFFICES OF
 TRI-ENGINEERING SERVICE

By: Paul E. Romer
 REG. C. E. NO. 2274
 FOR LEGEND SEE PLAN NO. S-A-64

NOTE:
 GRADES TO WHICH THIS IMPROVEMENT IS TO BE CONSTRUCTED ARE SHOWN ON PLANS AND PROFILES. GRADE POINTS FOR TOP OF CURB, CENTER LINE OF STREETS, OR CENTER LINE OF ALLEYS ARE SHOWN BY CIRCLES ON PROFILES. AT ALL POINTS BETWEEN DESIGNATED POINTS THE GRADE SHALL BE ESTABLISHED SO AS TO CONFORM TO A STRAIGHT LINE DRAWN BETWEEN SAID DESIGNATED POINTS.
 SPECIFICATIONS ARE ON FILE ABOVE U.S.C. & G.S. 288 UNDER DRAWING NO. 1922.
 THIS DRAWING AND THE DATA HEREON ARE HEREBY MADE A PART OF THE SPECIFICATIONS.
 WORK SHALL BE CONSTRUCTED ACCORDING TO SPECIFICATIONS ON FILE IN THE OFFICE OF THE CITY ENGINEER AND SHALL BE PROSECUTED ONLY IN THE PRESENCE OF THE COUNTY ENGINEER.
 BEFORE WORK CAN BE STARTED, THE CONTRACTOR MUST OBTAIN A PERMIT TO EXCAVATE IN CITY STREETS FROM THE CITY ENGINEER. PERMITS SHALL BE OBTAINED FROM THE CITY ENGINEER, ROOM 204 AMERICAN BLDG., 225 SO. BROADWAY SUFFICIENT TO COVER THE COST OF CONSTRUCTION INSPECTION AND RECORD PLANS.
 APPROVAL OF THIS PLAN BY THE CITY OF PARAMOUNT DOES NOT CONSTITUTE A REPRESENTATION AS TO THE ACCURACY OF THE LOCATION OR OF THE EXISTENCE OR NON-EXISTENCE OF ANY UNDERGROUND UTILITY PIPE, OR STRUCTURE WITHIN THE LIMITS OF THIS PROJECT. THIS NOTE APPLIES TO ALL PAGES.
 IF WORK IS TO BE DONE IN A STATE HIGHWAY, A PERMIT MUST BE OBTAINED FROM THE STATE OF CALIFORNIA, DIVISION OF HIGHWAYS, 120 SOUTH SPRING STREET.

CITY OF PARAMOUNT, CALIFORNIA

APPROVED, JOHN A. LAMBE, CITY ENGINEER
 APPROVED, A. M. RAWN, CHIEF ENGINEER
 BY: A. P. Collins SANITATION ENGINEER
 BY: H. Posthumus OFFICE ENGINEER
 CHECKED BY: Sk. Wida 2-11-57
 OFFICE OF CITY ENGINEER, 808 C. E. NO. 3406



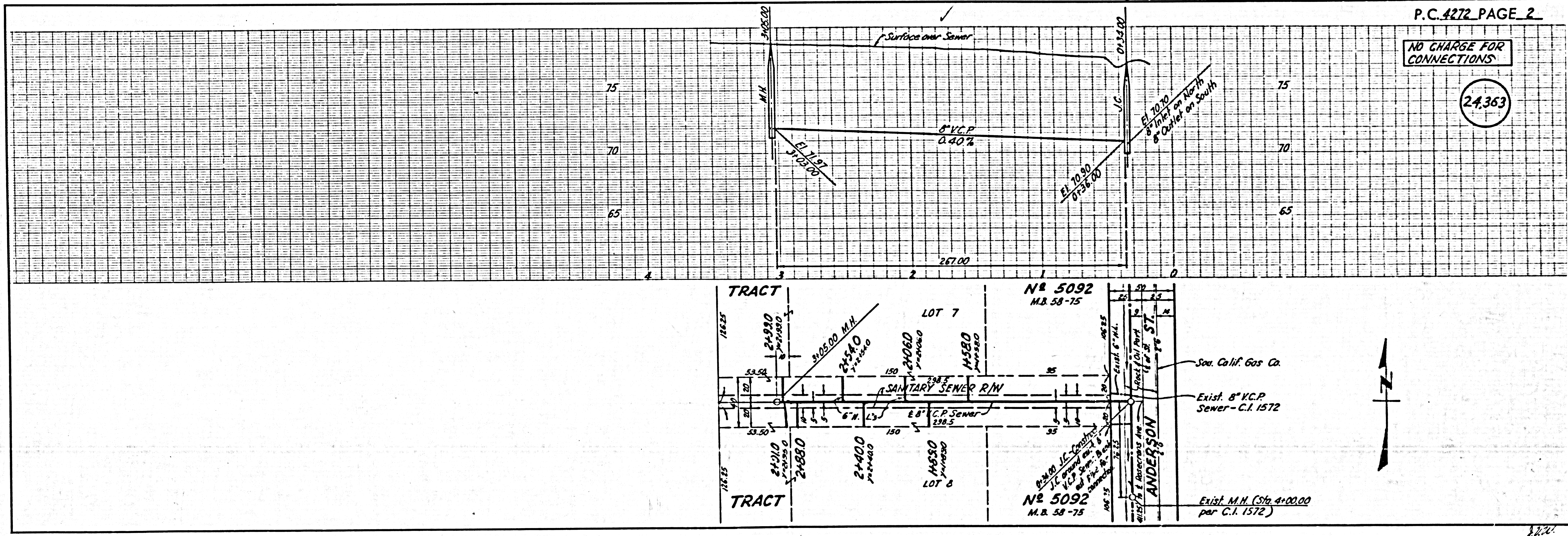
INDEX MAP
 SCALE: 1" = 600'
 P.C. 4272

NO CHARGE FOR CONNECTIONS
 Sk. Wida 2-11-57

P.C. 4272 PAGE 2

NO CHARGE FOR CONNECTIONS

(24,363)



U. S. G. & M. CO. SANITARY SEWER SHEET NO. 1