

SAN DIMAS BLDG. DIST. NO. 10

PROFILE ALIGNMENT AND GRADE OF **P.C. 4277**
SANITARY SEWERS PAGE **1**

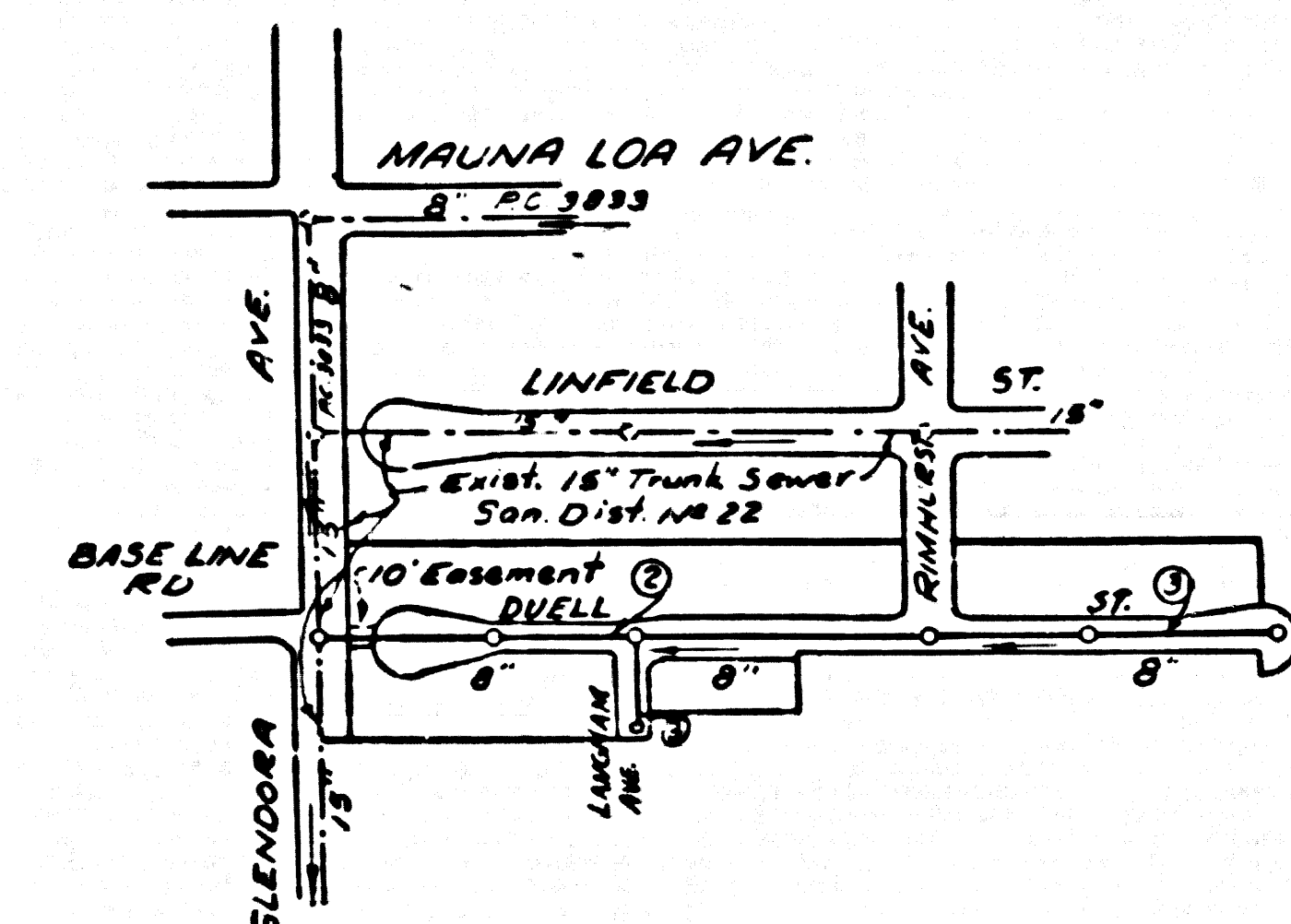
TO BE CONSTRUCTED IN
TRACT No 20391 (24,152)

PRIVATE CONTRACT NO. 4277
 W.S. 48

2 SHEETS, 3 PAGES
 SCALE: VERT. 1"=4' HORIZ. 1"=40'
 DECEMBER 2, 1956
 PREPARED BY THE OFFICE OF
TREADWELL ENGINEERING CORPORATION

BY *W. L. Treadwell*
 REG. C. E. NO. 410
 FOR LEGEND SEE PLAN NO. S-A-64

B.M. SG. 1143 Elev. 686.590
 Lead & tack in south edge of conc. walk to
 house No 6159 Grand Ave. near S.W. corner
 of Mauna Loa Ave. & Grand Ave.



INDEX MAP
 TRACT No 20391
 P.C. 4277
 SCALE 1"=300'

- NOTES
- PROVIDE STAKES ON THE PROPERTY LINE OR PROPERTY LINES PRODUCED AT RIGHT ANGLES TO THE SEWER LINE AT THE CENTER LINE OF EACH MANHOLE.
 - NO REPRESENTATIVE OF THE COUNTY ENGINEER WILL SURVEY OR LAYOUT ANY PORTION OF THE WORK.
 - THE OWNER OR HIS AUTHORIZED REPRESENTATIVE SHALL FURNISH THE COUNTY ENGINEER WITH GRADE SHEETS AND STATION FOR ALL HOUSE LATERALS AND T BRANCHES AND SHALL PROVIDE STAKES FOR THEM AT THEIR PROPER LOCATIONS WITH STATIONING PLAINLY MARKED. ANY CHANGE IN LOCATION SHALL BE REQUESTED IN WRITING BY THE OWNER OR HIS REPRESENTATIVE.
 - NO REVISIONS SHALL BE MADE IN THESE PLANS WITHOUT THE APPROVAL OF THE COUNTY ENGINEER.
 - USE STANDARD MANHOLE FRAMES AND COVERS, S-A-117, EXCEPT AS NOTED.
 - USE STANDARD STRENGTH PIPE EXCEPT AS NOTED.
 - USE CEMENT MORTAR FOR ALL VITRIFIED CLAY PIPE JOINTS.
 - RESURFACE ALL TRENCH WITHIN PAVED AREA TO MEET L. A. COUNTY ROAD DEPT., OR CALIF. STATE HIGHWAY DEPT. REQUIREMENTS IN ACCORDANCE WITH PERMITS.
 - ENCASE FOUR FEET OF SEWER AT POINTS OF INTERFERENCE WITH POLES, S-A-119.
 - HOUSE LATERALS TO BE CONSTRUCTED WITH INVERTS AT PROPERTY LINE 6 FEET BELOW CURB GRADE EXCEPT AS NOTED.
 - ALL STRUCTURES SHALL BE BRICK SEWER STRUCTURES, S-A-104, EXCEPT AS NOTED.
 - FOR ALLOWABLE LEAKAGE TEST USE FORMULA NO. 1 SPEC'S, SEC 38.
 - MANHOLE TOPS IN UNIMPROVED RIGHTS-OF-WAY TO BE 6" ABOVE FINISHED GRADE.
 - THE PRIVATE ENGINEER IS TO FURNISH THE HOUSE LATERAL DEPTH AT THE PROPERTY LINE BELOW THE TOP OF CURB ELEVATION FOR EACH HOUSE LATERAL, ON THE GRADE SHEET.

before breaking into any existing structure,
 and before final acceptance of this work,
 County Sanitation District should be notified
 in order that required inspection may be made.

NO CHARGE FOR CONNECTIONS
Retulon 1-16-57

NOTES

GRADES TO WHICH THE IMPROVEMENT IS TO BE CONSTRUCTED ARE SHOWN ON PLANS AND PROFILES. GRADE POINTS FOR TOP OF CURB, CENTER LINE OF STREETS, OR CENTER LINE OF ALLEYS ARE SHOWN BY CIRCLES ON PROFILES. AT ALL POINTS BETWEEN DESIGNATED POINTS THE GRADE SHALL BE ESTABLISHED SO AS TO COMFORM TO A STRAIGHT LINE BETWEEN SAID DESIGNATED POINTS.

ELEVATIONS ARE IN FEET ABOVE U.S.C. AND G.S. SEA LEVEL. CONTAINING OF 1929.

THIS DRAWING AND THE DATA HEREON ARE HEREBY MADE A PART OF THE SPECIFICATIONS.

WORK SHALL BE CONSTRUCTED ACCORDING TO SPECIFICATIONS ON FILE IN THE OFFICE OF THE COUNTY ENGINEER AND SHALL BE PROTECTED ONLY IN THE PRESENCE OF THE COUNTY ENGINEER.

BEFORE WORK CAN BE STARTED, THE CONTRACTOR MUST OBTAIN A PERMIT TO EXCAVATE IN COUNTY STREETS FROM THE L. A. COUNTY ROAD DEPT., 150 W. 5TH ST. AND MAKE A DEPOSIT WITH THE COUNTY ENGINEER, ROOM 324 MAIN AMERICAN BUILDING, 233 SO. BROADWAY SUFFICIENT TO COVER THE COST OF CONSTRUCTION INSPECTION AND RECORD PLANS.

APPROVAL OF THIS PLAN BY THE COUNTY OF LOS ANGELES DOES NOT CONSTITUTE A REPRESENTATION AS TO THE ACCURACY OF THE LOCATION OF OR THE EXISTENCE OR NON-EXISTENCE OF ANY UNDERGROUND UTILITY PIPE, OR STRUCTURE WITHIN THE LIMITS OF THE PROJECT THIS NOTE APPLIES TO ALL PAGES.

IF WORK IS TO BE DONE BY A STATE HIGHWAY, A PERMIT MUST BE OBTAINED FROM THE STATE OF CALIFORNIA, DIVISION OF HIGHWAYS, 120 SOUTH SPRING STREET.

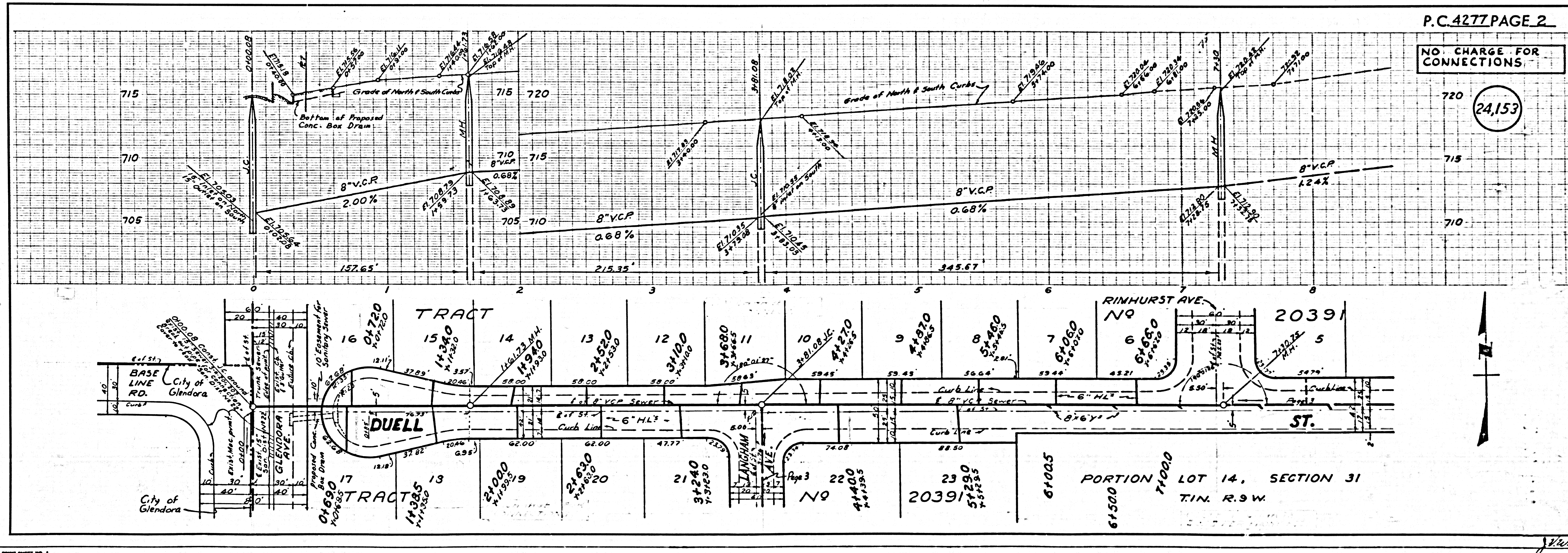
COUNTY OF LOS ANGELES, CALIFORNIA

APPROVED, JOHN A. LAMBE, COUNTY ENGINEER
 APPROVED, A. M. BAWN, CHIEF ENGINEER
 NO. SAN. DIST. NO. 22

BY *A. D. Collins* SANITATION ENGINEER
 BY *L. Costello* OFFICE ENGINEER

CHECKED BY *Retulon* 1-17-57
 OFFICE OF COUNTY ENGINEER, SAN. C. E. NO. 7862

Checked 2-19-57 M. Larson



P.C. 4277 PAGE 2

NO CHARGE FOR CONNECTIONS

(24,153)

NO CHARGE FOR CONNECTIONS

