

BENCH MARK SY 1412 E1, B119
 L.F.B.N. 2 South of South curb returns
 S.E. cor. Heiner St. & Clark Ave.

BELFLOWER BLDG. DIST. NO. 4

- NOTES**
- PROVIDE STAKES ON THE PROPERTY LINE OR PROPERTY LINES PRODUCED AT 90° ANGLES TO THE SEWER LINE AT THE CENTER LINE OF EACH MANHOLE.
 - NO REPRESENTATIVE OF THE COUNTY ENGINEER WILL SURVEY OR LAYOUT ANY PORTION OF THE WORK.
 - THE OWNER OR HIS AUTHORIZED REPRESENTATIVE SHALL FURNISH THE COUNTY ENGINEER WITH GRADE SHEETS AND STATION FOR ALL HOUSE LATERALS AND BRANCHES AND SHALL PROVIDE STAKES FOR THEM AT THEIR PROPER LOCATIONS WITH STATIONING PLANNED. ANY CHANGE IN LOCATION SHALL BE REQUESTED IN WRITING BY THE OWNER OR HIS REPRESENTATIVE.
 - NO REVISIONS SHALL BE MADE IN THESE PLANS WITHOUT THE APPROVAL OF THE COUNTY ENGINEER.
 - USE STANDARD MANHOLE FRAMES AND COVERS, S.A.117, EXCEPT AS NOTED.
 - USE STANDARD STRENGTH PIPE EXCEPT AS NOTED.
 - USE CEMENT MORTAR FOR ALL VITRIFIED CLAY PIPE JOINTS.
 - RESURFACE ALL TRENCH WITHIN PAVED AREA TO MEET L. A. COUNTY ROAD DEPT. OR CALIF. STATE HIGHWAY DEPT. REQUIREMENTS IN ACCORDANCE WITH PERMITS.
 - ENCASE FOUR FEET OF SEWER AT POINTS OF INTERFERENCE WITH POLES, S.A.119.
 - HOUSE LATERALS TO BE CONSTRUCTED WITH 4" DIA. 12" DEPTH AND 12" DIA. 12" DEPTH MANHOLES.
 - ALL STRUCTURES SHALL BE BRICK SEWER STRUCTURES, S.A.124, EXCEPT AS NOTED.
 - FOR ALLOWABLE LEAKAGE TEST USE FORMULA NO. 1, SPECS. SEC. 54.
 - MANHOLE TOPS IN UNIMPROVED RIGHTS-OF-WAY TO BE 6" ABOVE FINISHED GRADE.

PROFILE ALIGNMENT AND GRADE OF **P.C. 4278**
SANITARY SEWERS PAGE **1**
 TO BE CONSTRUCTED IN

CERRITOS AVENUE CROSSING

PRIVATE CONTRACT NO. 4278

W.S. 33

1 SHEET, 2 PAGES

SCALE: VERT. 1" = 4' HORIZ. 1" = 40'

JANUARY, 1957

PREPARED IN THE OFFICES OF

MANNING & DETILLA

BY *J. L. Manning*
 REG. C. E. NO. 2576

FOR LEGEND SEE PLAN NO. S.A.64

24,184

(2)

NOTE:
 GRADES TO WHICH THIS IMPROVEMENT IS TO BE CONSTRUCTED ARE SHOWN ON PLANS AND PROFILES. GRADE POINTS FOR TOP OF CURBS, CENTER LINE OF STREETS, OR CENTER LINE OF ALLEYS ARE SHOWN BY CIRCLES ON PROFILES AT ALL POINTS BETWEEN MANHOLES. POINTS BETWEEN THE GRADE SHALL BE ESTABLISHED SO AS TO COMFORM TO A STRAIGHT LINE DRAWN BETWEEN SAID DESIGNATED POINTS.
 ELEVATIONS ARE IN FEET ABOVE U.S.C. & G.S. SEA LEVEL. MAPS OF 1925.
 THIS DRAWING AND THE DATA HEREON ARE HEREBY MADE A PART OF THE SPECIFICATIONS.
 WORK SHALL BE CONSTRUCTED ACCORDING TO SPECIFICATIONS ON FILE IN THE OFFICE OF THE COUNTY ENGINEER AND SHALL BE PROSECUTED ONLY IN THE PRESENCE OF THE COUNTY ENGINEER.
 BEFORE WORK CAN BE STARTED, THE CONTRACTOR MUST OBTAIN A PERMIT TO EXCAVATE IN COUNTY STREETS FROM THE L. A. COUNTY ROAD DEPT., 126 W. 2ND ST. AND MAKE A REPORT WITH THE COUNTY ENGINEER, ROOM 524 FARM ANGELES BLDG. RMG. 335 SO. ROADWAY SUFFICIENT TO COVER THE COST OF CONSTRUCTION INSPECTION AND RECORD PLANS.
 APPROVAL OF THIS PLAN BY THE COUNTY OF LOS ANGELES DOES NOT CONSTITUTE A REPRESENTATION AS TO THE ACCURACY OF THE LOCATION OF OR THE EXISTENCE OR NON-EXISTENCE OF ANY UNDERGROUND UTILITY PIPE, OR STRUCTURE WITHIN THE LIMITS OF THIS PROJECT. THIS NOTE APPLIES TO ALL PAGES.
 IF WORK IS TO BE DONE IN A STATE HIGHWAY, A PERMIT MUST BE OBTAINED FROM THE STATE OF CALIFORNIA, DIVISION OF HIGHWAYS, 126 SOUTH SPRING STREET.

COUNTY OF LOS ANGELES, CALIFORNIA

APPROVED, JOHN A. LAMBIE, COUNTY ENGINEER

APPROVED, A. M. BROWN, CHIEF ENGINEER

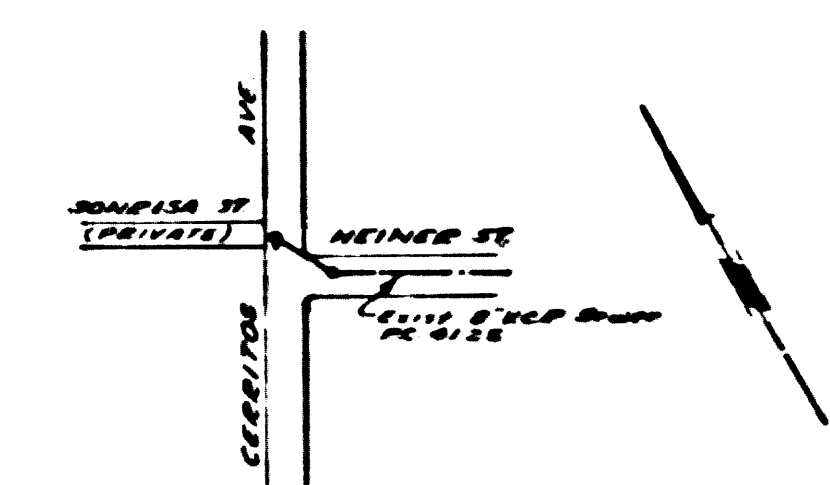
BY *A. P. Collins* SANITATION ENGINEER

BY *V. J. Forthman* OFFICE ENGINEER

CHECKED BY *J. K. Decker* 1-4-57

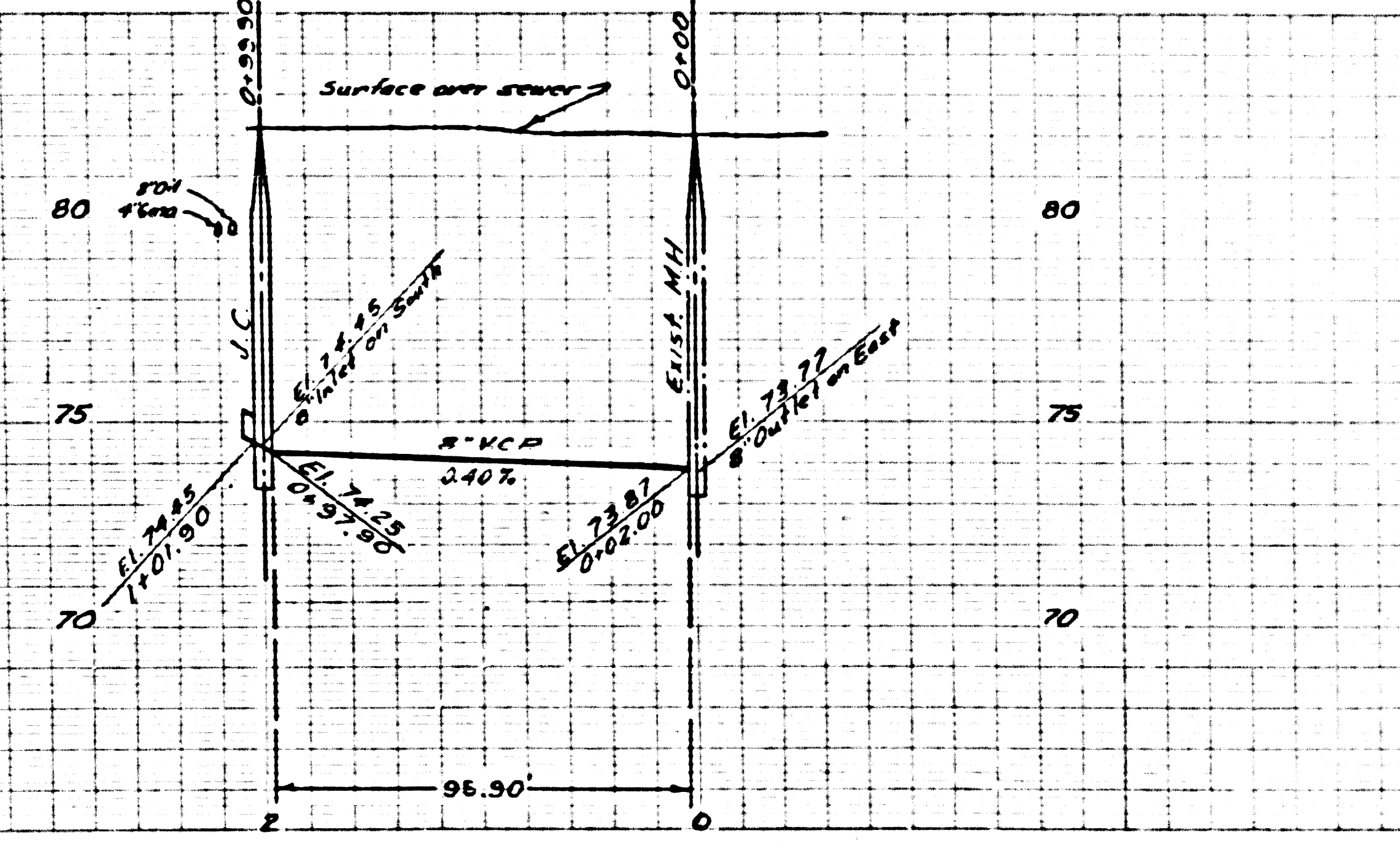
OFFICE OF COUNTY ENGINEER, BLDG. C. & NO. 5466

NO CHARGE
 FOR CONNECTIONS
L. Carter 1-4-57



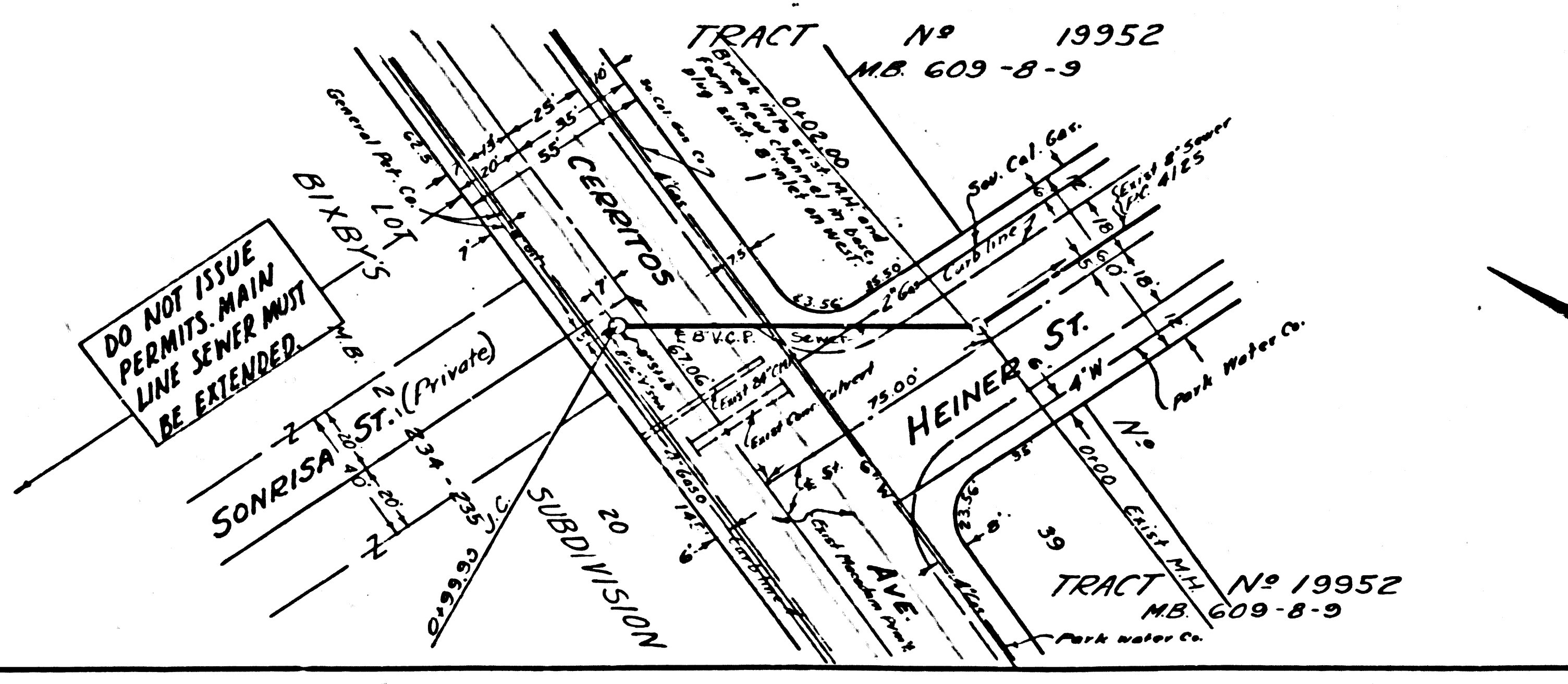
INDEX MAP
 P.C. 4278
 SCALE: 1" = 400'

P.C. 4278 PAGE 2



NO CHARGE
 FOR CONNECTIONS

24,185



ord.

DC4518