

EAST LOS ANGELES BLDG. DIST. NO. 6

PROFILE ALIGNMENT AND GRADE OF P.C. 4280  
 SANITARY SEWERS PAGE 1  
 TO BE CONSTRUCTED IN  
 A SANITARY SEWER RIGHT OF WAY (24753)  
 EAST OF VAIL AVENUE

PRIVATE CONTRACT NO. 4280

W.S. 36

1 SHEET, 2 PAGES

SCALE: VERT. 1" = 4' HORIZ. 1" = 40' DECEMBER, 1956

PREPARED IN THE OFFICES OF

CAL ENGINEERS

By Russell G. Ludwig  
 REG. C.E. NO. 5852

FOR LEGEND SEE PLAN NO. S-A-64

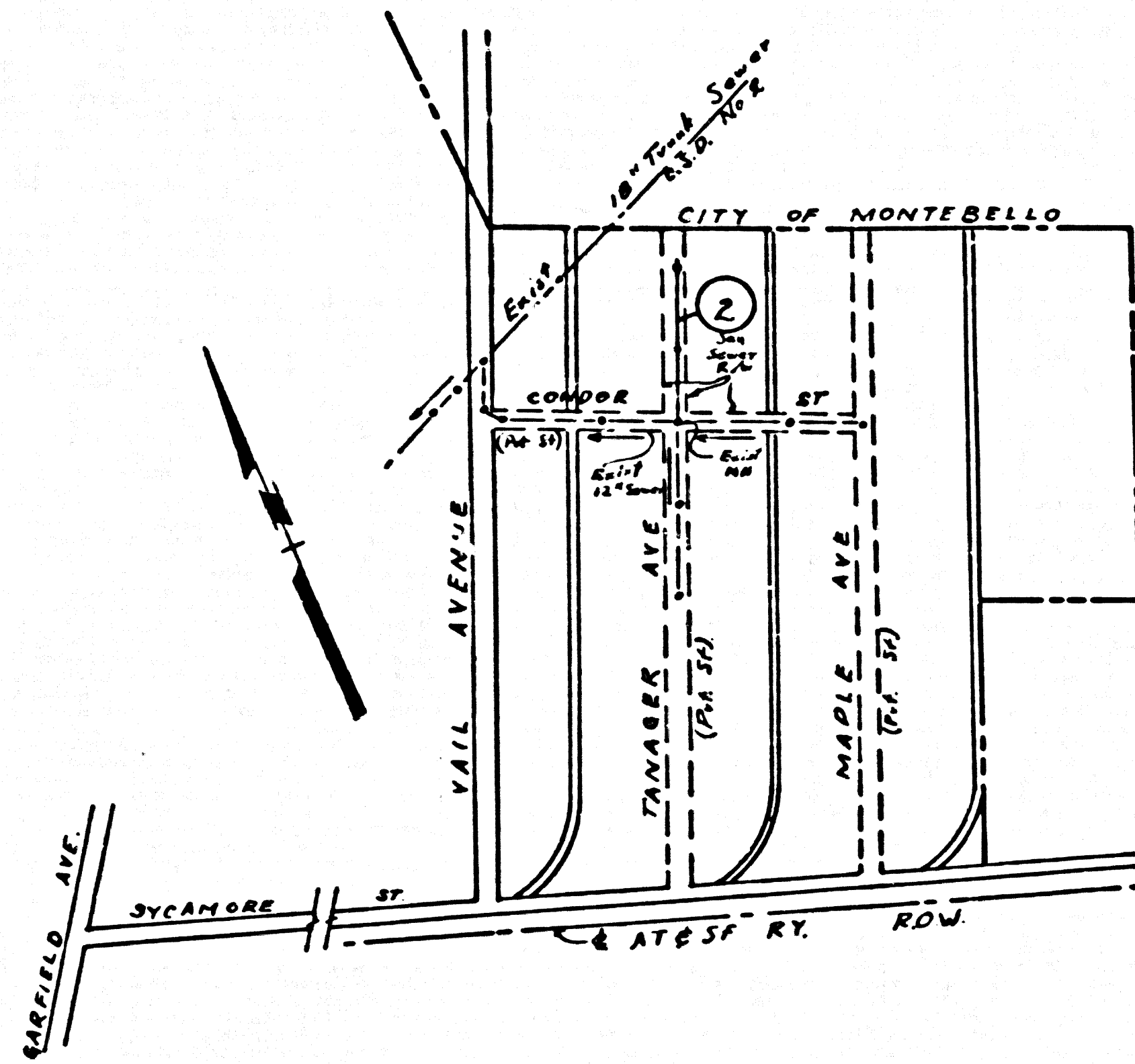
- NOTES
- PROVIDE STAKES ON THE PROPERTY LINE OR PROPERTY LINES PRODUCED AT RIGHT ANGLES TO THE SEWER LINE AT THE CENTER LINE OF EACH MANHOLE.
  - NO REPRESENTATIVE OF THE COUNTY ENGINEER WILL SURVEY OR LAYOUT ANY PORTION OF THE WORK.
  - THE OWNER OR HIS AUTHORIZED REPRESENTATIVE SHALL FURNISH THE COUNTY ENGINEER WITH GRADE SHEETS AND STATION FOR ALL HOUSE LATHRAIS AND Y BRANCHES AND SHALL PROVIDE STAKES FOR THEM AT THEIR PROPER LOCATIONS WITH STATIONING PLAINLY MARKED. ANY CHANGE IN LOCATION SHALL BE REQUESTED IN WRITING BY THE OWNER OR HIS REPRESENTATIVE.
  - NO REVISIONS SHALL BE MADE IN THESE PLANS WITHOUT THE APPROVAL OF THE COUNTY ENGINEER.
  - USE STANDARD MANHOLE FRAMES AND COVERS, S-A-117, EXCEPT AS NOTED.
  - USE STANDARD STRENGTH PIPE EXCEPT AS NOTED.
  - USE CEMENT MORTAR FOR ALL VITRIFIED CLAY PIPE JOINTS.
  - RESURFACE ALL TRENCH WITHIN PAVED AREA TO MEET L. A. COUNTY ROAD DEPT., OR CALIF. STATE HIGHWAY DEPT. REQUIREMENTS IN ACCORDANCE WITH PERMITS.
  - ENCASE FOUR FEET OF SEWER AT POINTS OF INTERFERENCE WITH POLES, S-A-119.
  - HOUSE LATHRAIS TO BE CONSTRUCTED WITHIN 10 FEET OF PROPERTY LINE. FOOT-CURB-GRADE-SHEET-AS-NOTED.
  - ALL STRUCTURES SHALL BE BRICK SEWER STRUCTURES, S-A-104, EXCEPT AS NOTED.
  - FOR ALLOWABLE LEAKAGE TEST USE FORMULA NO. 1 SPEC'S, SEC. 26.
  - MANHOLE TOPS IN UNPAVED AREAS TO BE 6" ABOVE FINISHED GRADE.

NOTE:  
 THE CONTRACTOR SHALL NOTIFY THE CONSTRUCTION & STORM DRAIN DIVISION BY TELEPHONE, MADISON 94747, EXT. 362, AT LEAST 24 HRS. BEFORE STARTING ANY WORK UNDER THIS CONTRACT.

B.M. 57-344 L.A. Co. Rd. Dept. Elev. 174.647  
 8 ft. Vail Ave and Washington Blvd.  
 Brass cap in standard man. box

INDEX TABLE	
SHEETS	PAGES
1	2

NO CHARGE FOR CONNECTIONS  
 - Wm. Mitchell 6-12-57



INDEX MAP  
 SCALE 1" = 600'  
 SIMONS INDUSTRIAL PROPERTIES  
 P.C. 4280

COUNTY OF LOS ANGELES, CALIFORNIA

APPROVED, JOHN A. LAMME, COUNTY ENGINEER  
 APPROVED, A. M. BAWIN, CHIEF ENGINEER

BY R. G. Ludwig SANITATION ENGINEER  
 BY A. M. Bawin OFFICE ENGINEER

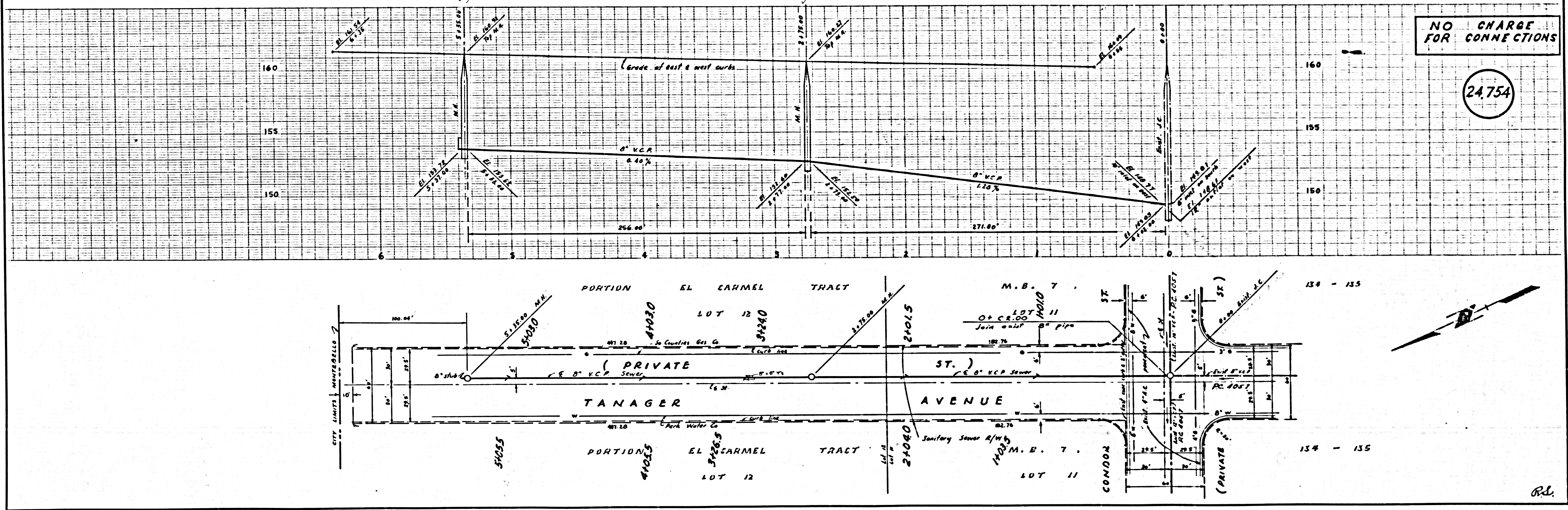
CHECKED BY R. G. Ludwig  
 OFFICE OF COUNTY ENGINEER, BOX C. E. NO. 3400

APPROVED BY INDUSTRIAL WASTE DIVISION  
 BY Arthur Parker DATE 1/28/57

P.C. 4280 PAGE 2

NO CHARGE FOR CONNECTIONS

(24754)



0854 .3 F