

PALMDALE BLDG. DIST. NO. 8.1

PROFILE ALIGNMENT AND GRADE OF **P.C. 4282**
SANITARY SEWERS PAGE **1**

TO BE CONSTRUCTED IN **(24378)**
SUMAC AVE

PRIVATE CONTRACT NO. 4282

W.S. 65

1 SHEET, 2 PAGES

SCALE: VERT. 1" = 4' HORIZ. 1" = 20'

DEC. 1956

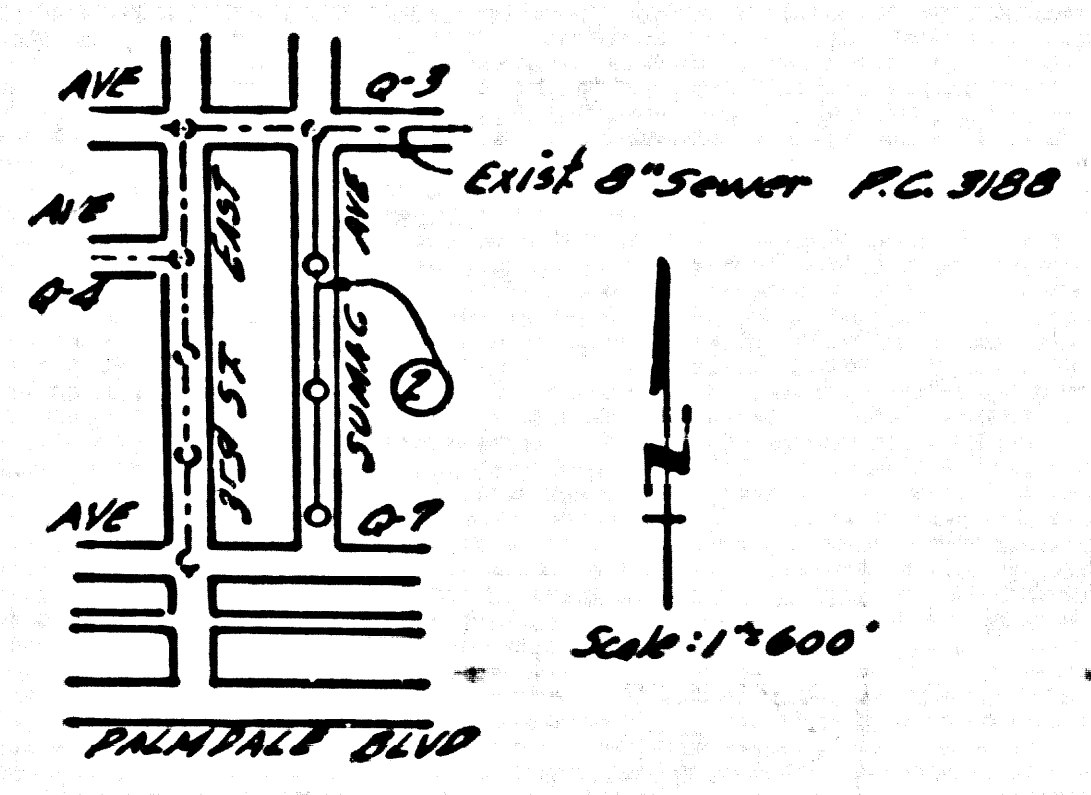
PREPARED IN THE OFFICES OF

R.L. STUCKEY CO.

REG. C. NO. 6062

FOR LEGEND SEE PLAN NO. S-A-64

U.S. 3187 6-426, E1+ 2636.369, 0.6 mi. N along S Pac. Co R.R. from the sig @ Palmdale, L.A. County, 3 1/4 miles (about 4945) S. of milepost 425, about 85 yds. N of rd crossing 422, 43' W of E of tracks, 60' E of Hwy. 6 & 25' N of a pole, 5th disk stamped 6-426, 1935, set in top of concrete post.



- NOTE:**
- PROVIDE STAKES ON THE PROPERTY LINE OR PROPERTY LINES PRODUCED AT RIGHT ANGLES TO THE SEWER LINE AT THE CENTER LINE OF EACH MANHOLE.
 - NO REPRESENTATIVE OF THE COUNTY ENGINEER WILL SURVEY OR LAYOUT ANY PORTION OF THE WORK.
 - THE OWNER OR HIS AUTHORIZED REPRESENTATIVE SHALL FURNISH THE COUNTY ENGINEER WITH GRADE SHEETS AND STATIONING FOR ALL HOUSE LATERALS AND Y BRANCHES AND SHALL PROVIDE STAKES FOR THEM AT THEIR PROPER LOCATIONS WITH STATIONING PLAINLY MARKED. ANY CHANGE IN LOCATION SHALL BE REQUESTED BY WRITING BY THE OWNER OR HIS REPRESENTATIVE.
 - NO REVISIONS SHALL BE MADE IN THESE PLANS WITHOUT THE APPROVAL OF THE COUNTY ENGINEER.
 - USE STANDARD MANHOLE FRAMES AND COVERS, S.A-117, EXCEPT AS NOTED.
 - USE STANDARD STRENGTH PIPE EXCEPT AS NOTED.
 - USE CEMENT MORTAR FOR ALL VITRIFIED CLAY PIPE JOINTS.
 - RESURFACE ALL TRENCHES WITHIN PAVED AREA TO MEET L. A. COUNTY ROAD DEPT., OR CALIF. STATE HIGHWAY DEPT. REQUIREMENTS IN ACCORDANCE WITH PERMITS.
 - INSTALL FOUR FEET OF SEWER AT POINTS OF INTERFERENCE WITH POLES, S.A-119.
 - HOUSE LATERALS TO BE CONSTRUCTED WITH INVERTS AT PROPERTY LINE. SEE JUST BELOW CURB GRADE EXCEPT AS NOTED.
 - ALL STRUCTURES SHALL BE BRICK SEWER STRUCTURES, S.A-184, EXCEPT AS NOTED.
 - FOR ALLOWABLE LEAKAGE TEST USE FORMULA NO. 1 - 1/2 INCH, SEC. 11.
 - MANHOLE TOPS IN UNIMPROVED RIGHT-OF-WAY TO BE 4" ABOVE FINISHED GRADE.
 - Ball all pipe joints with 4" of cement mortar that are within 20' of all property lines.
 - The Private Engineer is to furnish the House Lateral depth at the property line below the top of curb elevation for each House Lateral, on the Grade Sheet.

NO CHARGE FOR CONNECTIONS
 January 1-15-57

NOTE:

GRADES TO WHICH THIS IMPROVEMENT IS TO BE CONSTRUCTED ARE SHOWN ON PLANS AND PROFILES. GRADE POINTS FOR TOP OF CURBS, CENTER LINE OF STREETS, OR CENTER LINE OF ALLEYS ARE SHOWN BY CIRCLES ON PROFILES AT ALL POINTS BETWEEN REGULAR POINTS THE GRADE SHALL BE ESTABLISHED SO AS TO CONFORM TO A SMOOTH LINE DRAWN BETWEEN SAID REGULAR POINTS.

ELEVATIONS ARE IN FEET ABOVE U.S.C. & G.S. FOR LOWEST DATUM OF 1929.

THIS DRAWING AND THE DATA HEREON ARE HEREBY MADE A PART OF THE SPECIFICATIONS.

WORK SHALL BE CONSTRUCTED ACCORDING TO SPECIFICATIONS ON FILE IN THE OFFICE OF THE COUNTY ENGINEER AND SHALL BE PROSECUTED ONLY IN THE PRESENCE OF THE COUNTY ENGINEER.

BEFORE WORK CAN BE STARTED THE CONTRACTOR MUST OBTAIN A PERMIT TO EXCAVATE IN COUNTY STREETS FROM THE L. A. COUNTY ROAD DEPT., 126 W. 2ND ST. AND MAKE A REPORT WITH THE COUNTY ENGINEER, ROOM 224 SAN AMERICAN BLDG. 318 SO. BROADWAY SUFFICIENT TO COVER THE COST OF CONSTRUCTION INSPECTION AND RECORD PLANS.

APPROVAL OF THIS PLAN BY THE COUNTY OF LOS ANGELES DOES NOT CONSTITUTE A REPRESENTATION AS TO THE ACCURACY OF THE LOCATION OF OR THE EXISTENCE OR NON-EXISTENCE OF ANY UNDERGROUND UTILITY PIPE OR STRUCTURE WITHIN THE LIMITS OF THIS PROJECT. THE WORKER APPLICANT TO ALL PAGES.

IF WORK IS TO BE DONE IN A STATE HIGHWAY, A PERMIT MUST BE OBTAINED FROM THE STATE OF CALIFORNIA, DIVISION OF HIGHWAYS, 120 SOUTH SPRING STREET.

COUNTY OF LOS ANGELES, CALIFORNIA

APPROVED, JOHN A. LAMBE, COUNTY ENGINEER

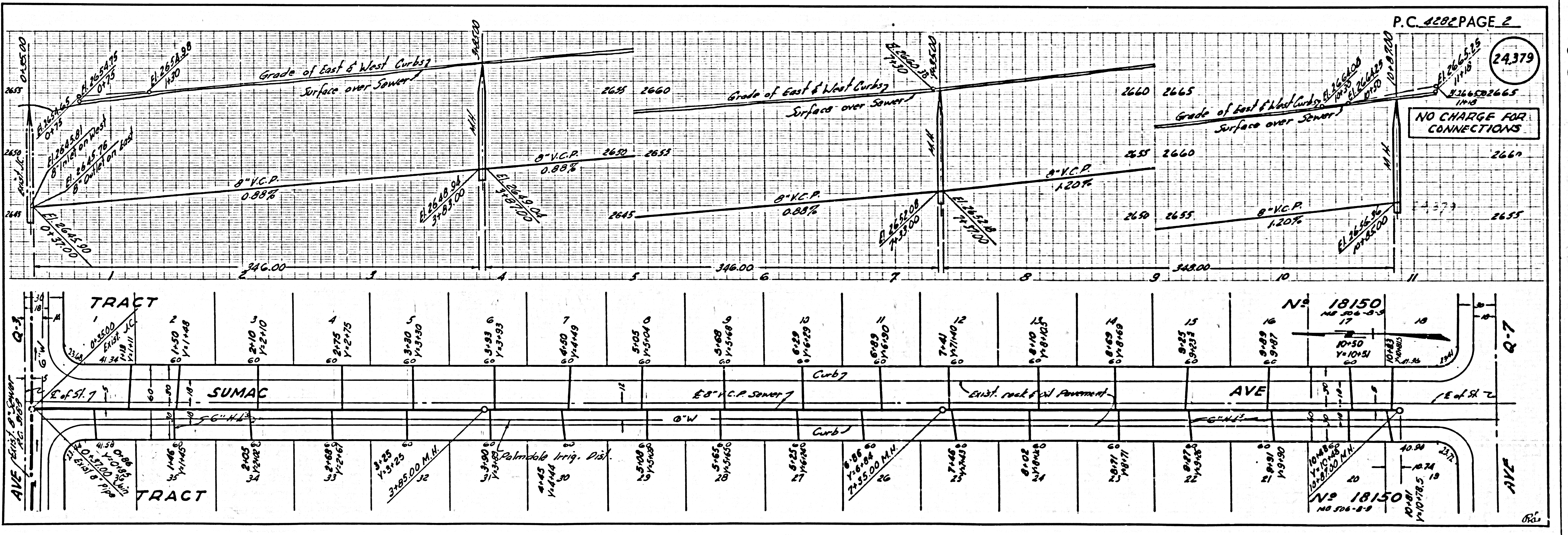
APPROVED, A. H. BAWM, CHIEF ENGINEER

BY **A. P. Collins** SANITATION ENGINEER

BY **J. P. ...** OFFICE ENGINEER

CHECKED BY **...**

OFFICE OF COUNTY ENGINEER, Rm. C. E. NO. 5406



D 58435