

LOMITA BLDG. DIST. NO. 7.1

PROFILE ALIGNMENT AND GRADE OF P.C.4288
SANITARY SEWERS PAGE 1
TO BE CONSTRUCTED IN DOUBLE SCALE
CRENSHAW BLVD.
AND
TRACT N° 23398 (25,562)
PRIVATE CONTRACT NO. 4288
W.S. 27
7 SHEETS; 11 PAGES
SCALE: HORIZ. 1"=40' VERT. 1"=4' JANUARY, 1957
PREPARED BY THE OFFICES OF
ENGINEERING SERVICE CORPORATION
By *[Signature]* REG. C. E. NO. 2092
FOR LEGEND SEE PLAN NO. S-A-64

NOTE: GRADES TO WHICH THIS MONUMENT IS TO BE CONSTRUCTED ARE SHOWN ON PLANS AND PROFILE GRADE POINTS FOR TOP OF CURB, CENTER LINE OF STREETS, OR CENTER LINE OF ALLEYS ARE SHOWN BY CIRCLES ON PROFILES AT ALL POINTS BETWEEN DESIGNATED POINTS THE GRADE SHALL BE ESTABLISHED SO AS TO CORRESPOND TO A STRAIGHT LINE DRAWN BETWEEN SAID DESIGNATED POINTS.
REVISIONS AND IN ANY OTHER U.S.C. & G.S. SEA LEVEL DATUM OF 1929 THIS DRAWING AND THE DATA HEREON ARE HEREBY MADE A PART OF THE SPECIFICATIONS FOR THE WORK TO BE CONSTRUCTED ACCORDING TO THE SPECIFICATIONS ON FILE IN THE OFFICE OF THE COUNTY ENGINEER AND SHALL BE PROSECUTED ONLY IN THE PRESENCE OF THE COUNTY ENGINEER.
BEFORE WORK CAN BE STARTED, THE CONTRACTOR MUST OBTAIN A PERMIT TO EXCAVATE IN COUNTY STREETS FROM THE L. & C. COUNTY ROAD DEPT. AND A BAYNET FROM THE COUNTY ENGINEER, ROOM 224 PALM AVENUE, BEHIND THE COURTS, LOS ANGELES, CALIF. APPROVAL OF THIS PLAN BY THE COUNTY OF LOS ANGELES DOES NOT CONSTITUTE A REPRESENTATION AS TO THE ACCURACY OF THE LOCATION OF OR THE EXISTENCE OF ANY UNDERGROUND UTILITY PIPE, OR STRUCTURE WITHIN THE LIMITS OF THE PROJECT THE CONTRACTOR SHALL BE RESPONSIBLE FOR THE LOCATION OF ANY SUCH UTILITY PIPE OR STRUCTURE.
IF WORK IS TO BE DONE IN A STATE HIGHWAY, A PERMIT MUST BE OBTAINED FROM THE STATE OF CALIFORNIA, DIVISION OF HIGHWAYS, 126 SOUTH SPRING STREET.

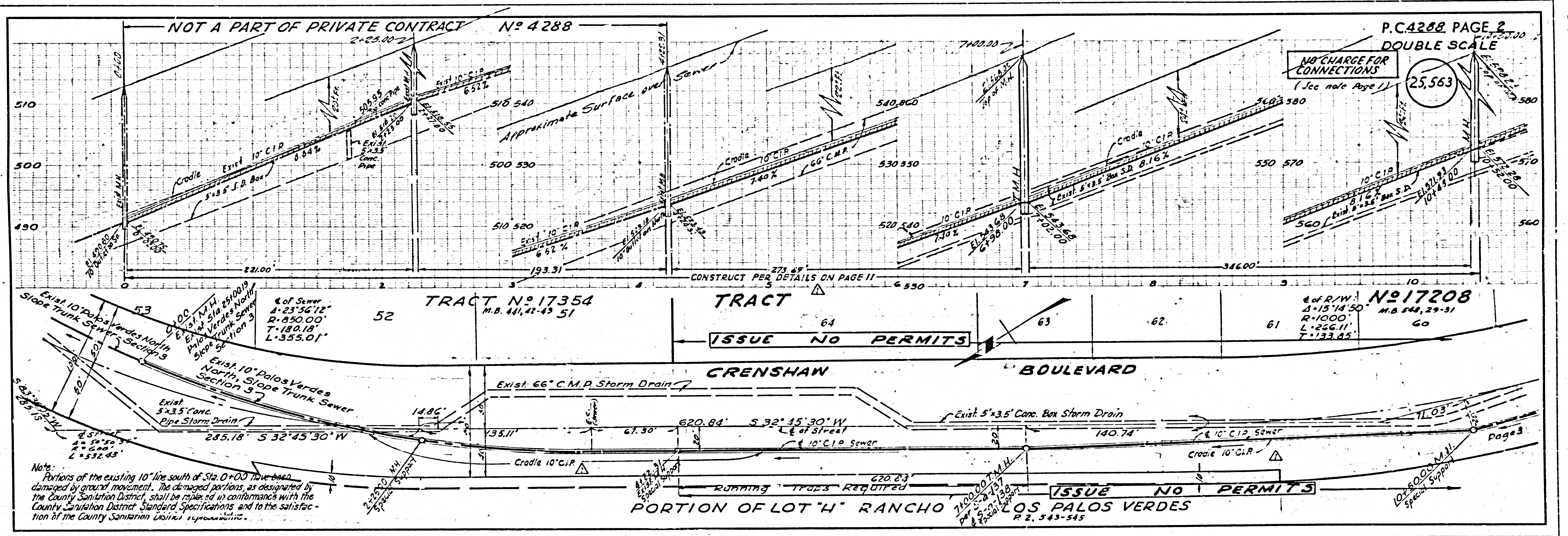
ENGINEERING SERVICE CORPORATION
1127 W. WASHINGTON BLVD. B. 9-7281
LOS ANGELES 15, CALIF.

REVISIONS		TRACED BY <i>[Signature]</i>	
Δ	ADDED GRADE 10" C.P. IN SURFACE	8-5-57	DESIGN BY <i>[Signature]</i>
Δ	CHANGED ALIGNMENT STA 17+00 TO STA. 31+25.00	8-5-57	CK'D BY <i>[Signature]</i>
Δ	ADDED B.M. 25-X-C	8-5-57	SUBMITTED <i>[Signature]</i>
Δ	Deleted H.M. Poles East Notes on M.N. Foundation Soil Compaction	11-6-57	

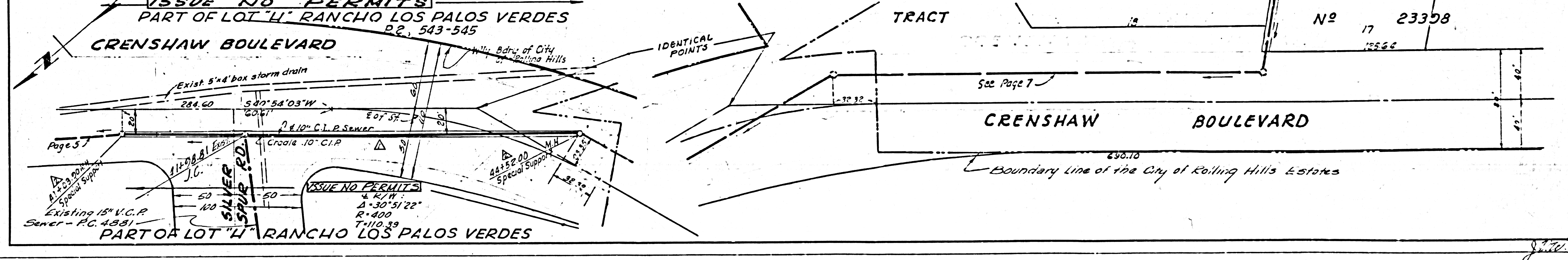
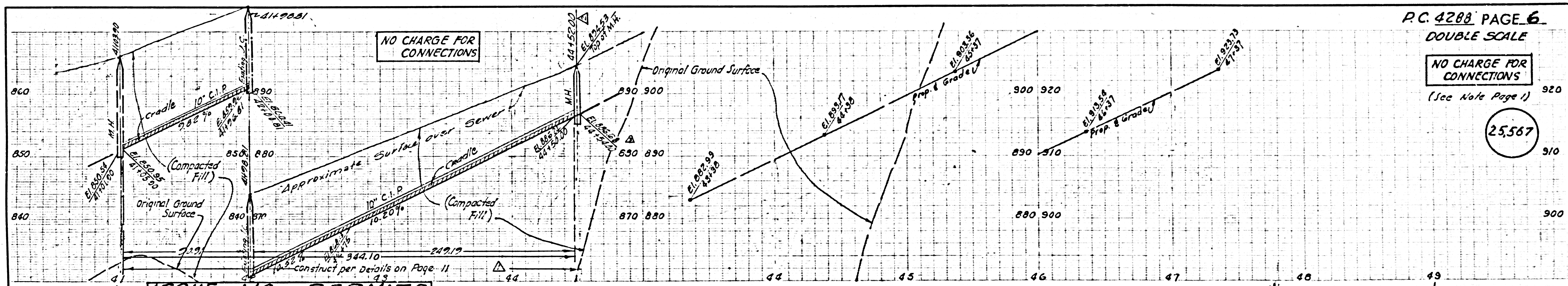
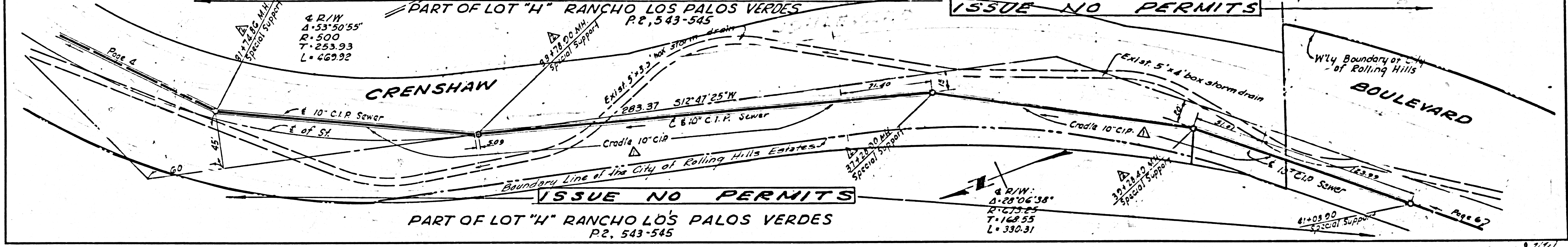
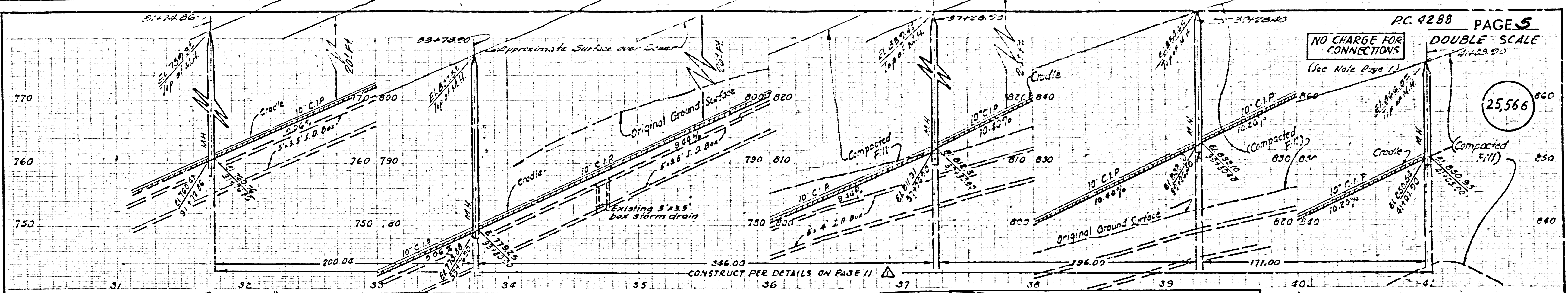
W. O. NO.	DWG. NO.	DATE	SCALE	L. B.	P. B.
2777-33		3-13-57	AS NOTED	866-12	533

APPROVED, JOHN A. LAMBIE, COUNTY ENGINEER APPROVED, A. H. RAWN, CHIEF ENGINEER
BY *[Signature]* BY *[Signature]*
SANITATION ENGINEER OFFICE ENGINEER
CHECKED BY *[Signature]* 3-1-57
OFFICE OF COUNTY ENGINEER, REG. C. E. NO. 9406

before breaking into any existing structure and before final acceptance of this work, County Sanitation District should be notified in order that required inspection may be made.

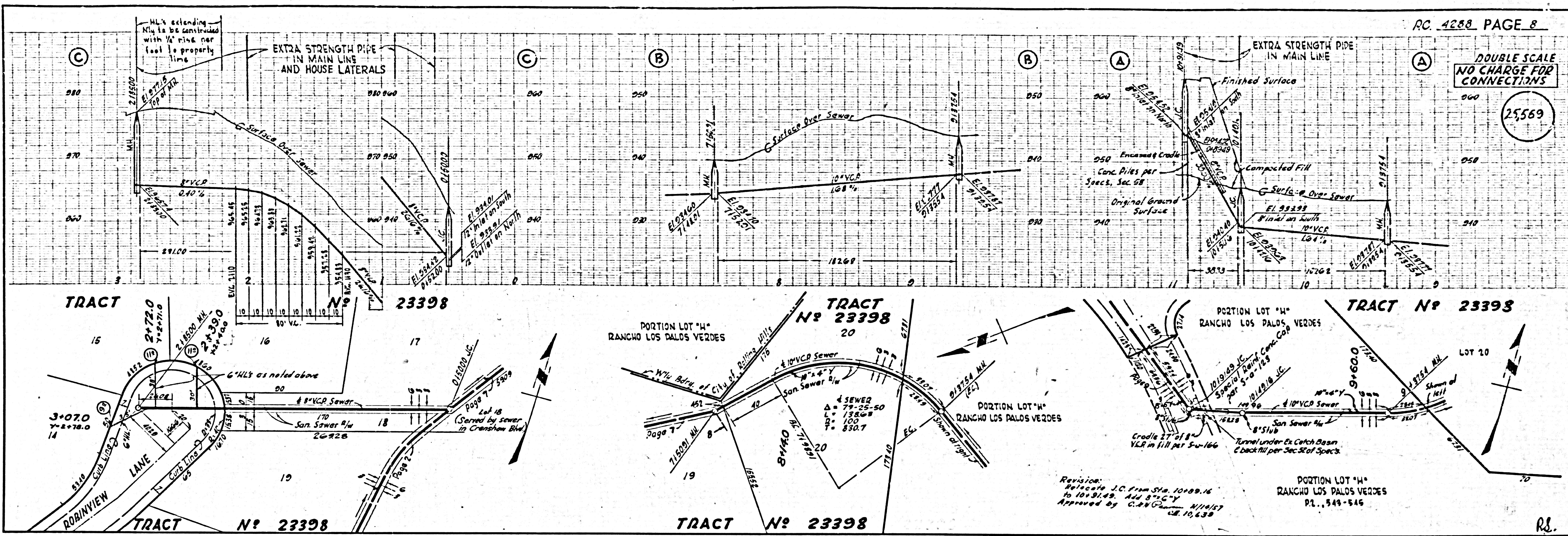


P.C. 4288



DOUBLE SCALE
NO CHARGE FOR
CONNECTIONS

25569

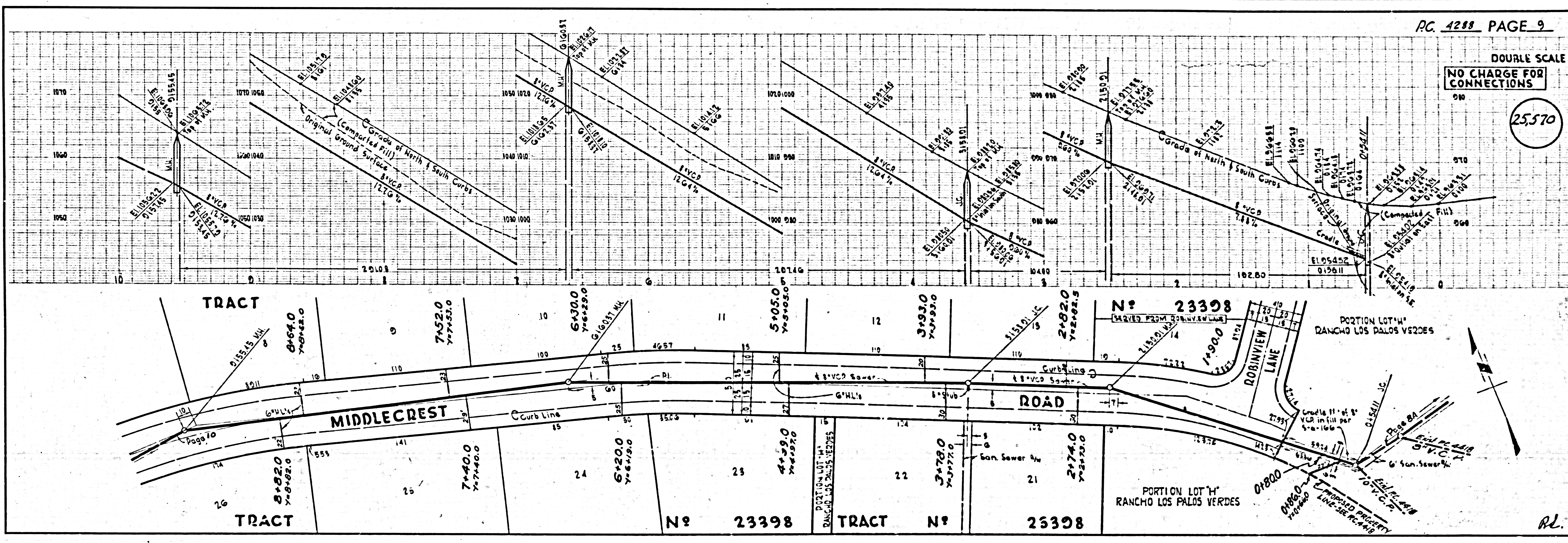


Revision:
Relocate I.C. from Sta. 10+89.16
to 10+91.49. Add 8" V.C.P.
Approved by C.E.V. 1/11/57
12.10.63

R.L.

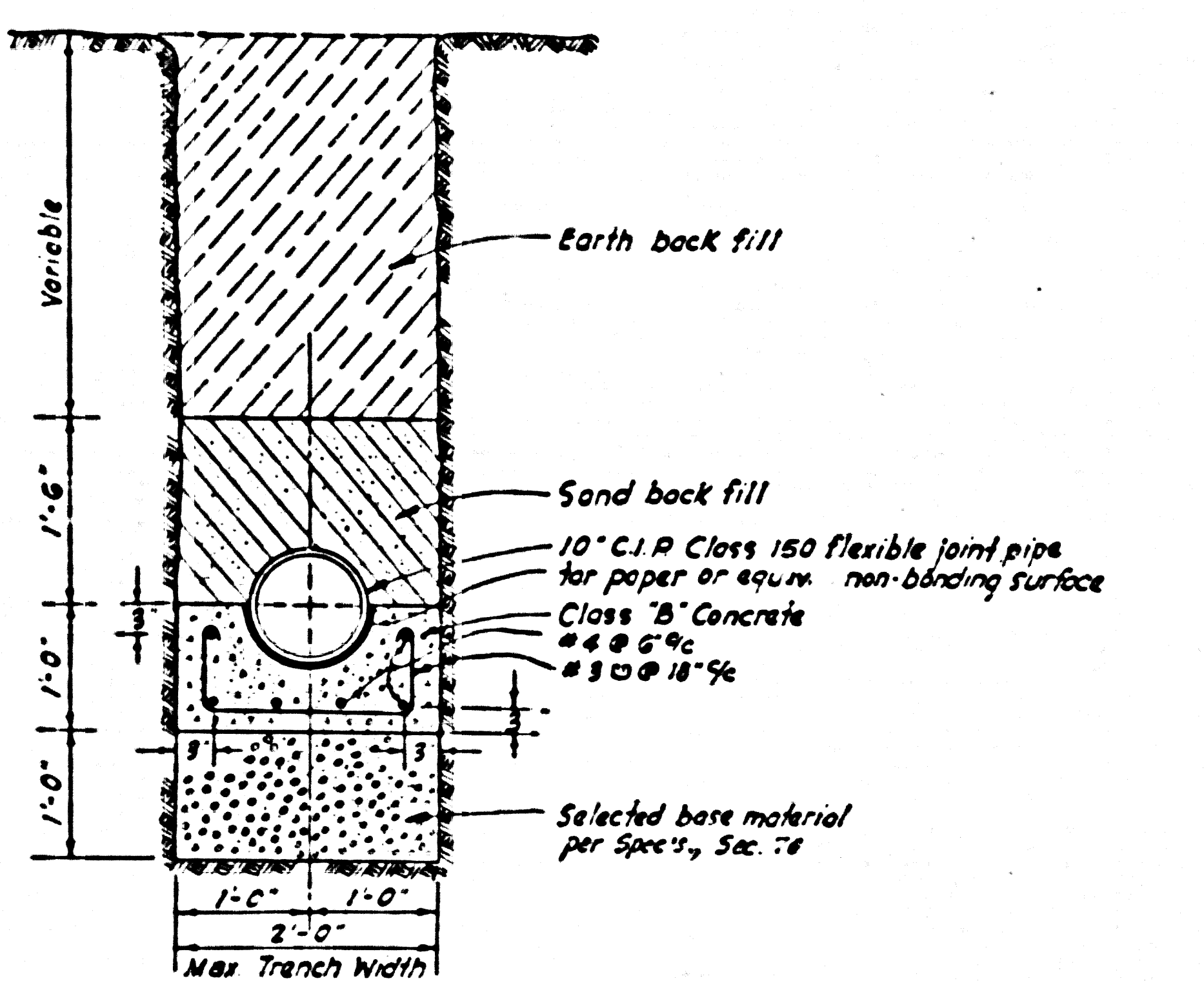
DOUBLE SCALE
NO CHARGE FOR
CONNECTIONS

25570

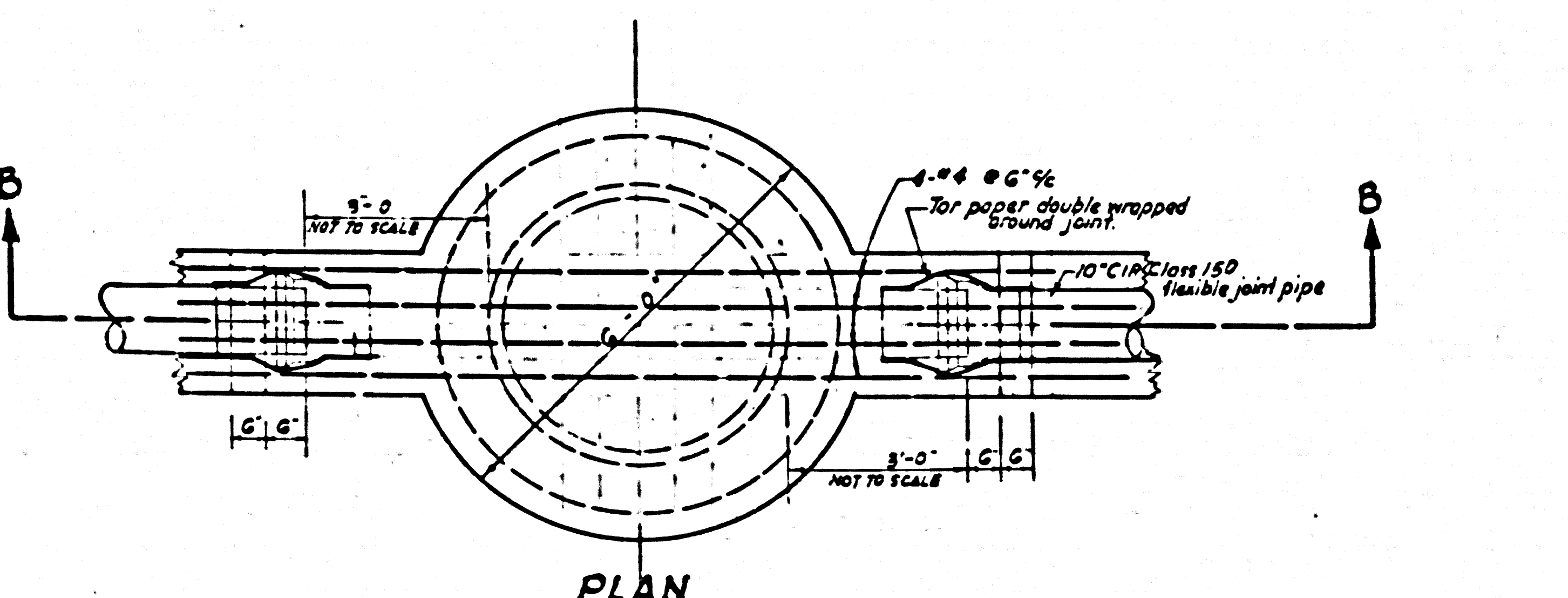


R.L.

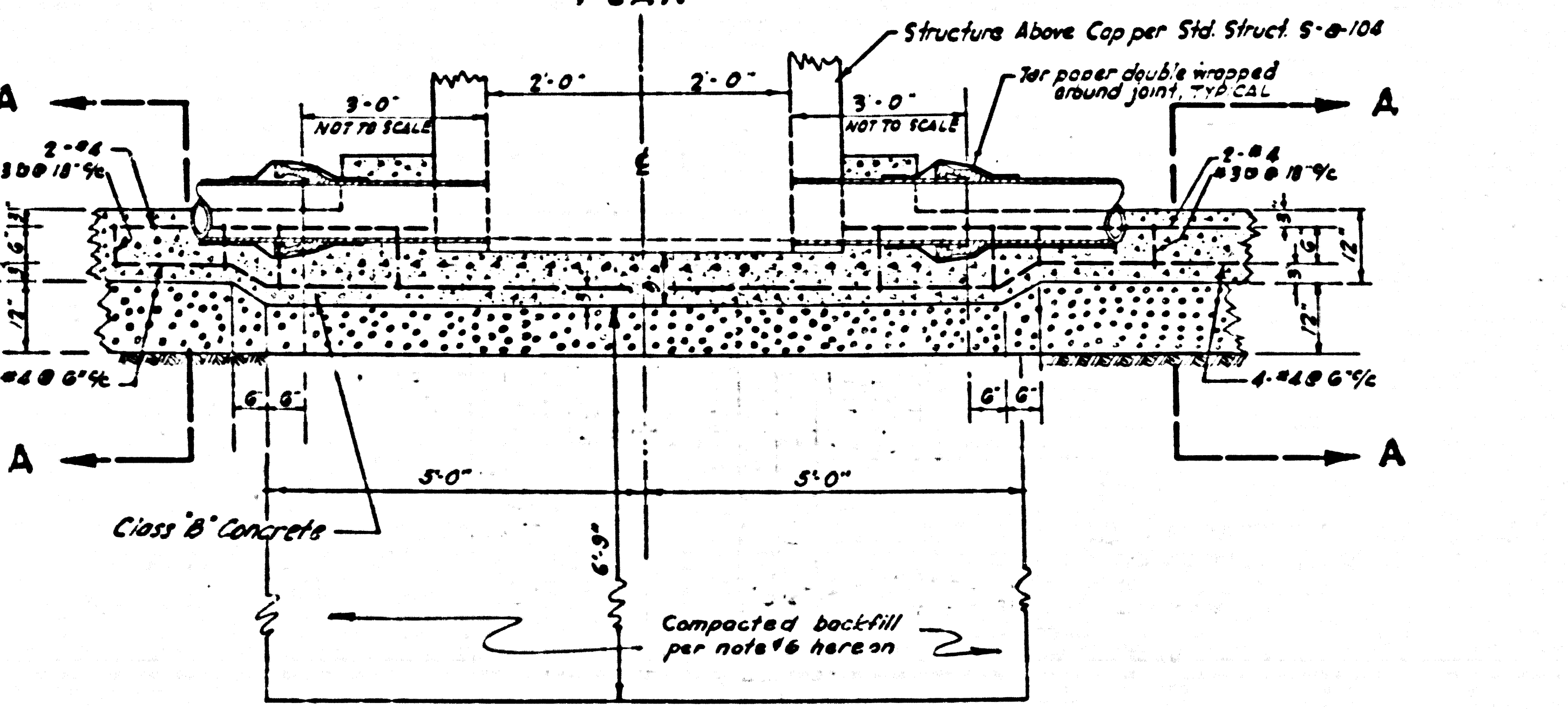
25572



**SECTION A-A
CRADLE DETAIL**
SCALE: 3/4" = 1'-0"



PLAN



SECTION B-B

SPECIAL REINFORCED CONCRETE SUPPORT FOR STANDARD SEWER MANHOLES

SCALE: 1/2" = 1'-0"

GENERAL NOTES

- 1- Use class B concrete per Sec. 97 of Standard Specifications.
- 2- Reinforcing steel bars shall be intermediate deformed bars per Sec. 82 of Std Specs. Spacing for bars are center to center of bars and the dimensions from face of conc. to bars are center of bars unless otherwise shown. The min. lap for steel bars shall be 12" inches.
- 3- Backfilling shall be in accordance with Std Specs except that no flooding of trenches will be allowed and that earth backfill shall be compacted to a relative density equal to the conditions prior to excavation of trench.
- 4- C.I.P. shall not exceed 18' feet max. length and shall be Class 150 with flexible joints (mechanical joint, plain end pipe with Dresser Couplings or Bell & Spigot pipe with Tyton joints with neoprene gaskets) as specified and approved by the County Engineer.
- 5- Pipe cradle supports shown hereon shall be eliminated where field conditions indicate compaction to be greater than 90% relative density, however c.i.p. shall be confined to be used, as shown on the plans.
- 6- Foundations for all M.H.s. within Cranshaw Blvd. shall consist of the excavation of a hole approx. 10' sq. ft. 6'-9" below bottom of M.H. slab. This hole shall be backfilled & compacted to a relative density greater than 90%. The compaction shall be done under the supervision of a Soil Engineer.

Revision:
Delete pipe supports for M.H. and substitute M.H. foundation of compacted backfill.
APPROVED BY: *Chas. J. Pinner* 11/3/67
OFFICE OF COUNTY ENGINEER CR 4639