

LOMITA BLDG. DIST. NO. 7.1

PROFILE ALIGNMENT AND GRADE OF P.C. 4291
SANITARY SEWERS PAGE 1

TO BE CONSTRUCTED IN

TRACT No 23353 (24405)

PRIVATE CONTRACT NO. 4291

W.S. 28

3 SHEETS, 3 PAGES

SCALE: VERT. 1" = 4'

1956

PREPARED IN THE OFFICES OF

BARCLAY ENGINEERING CO., INC.

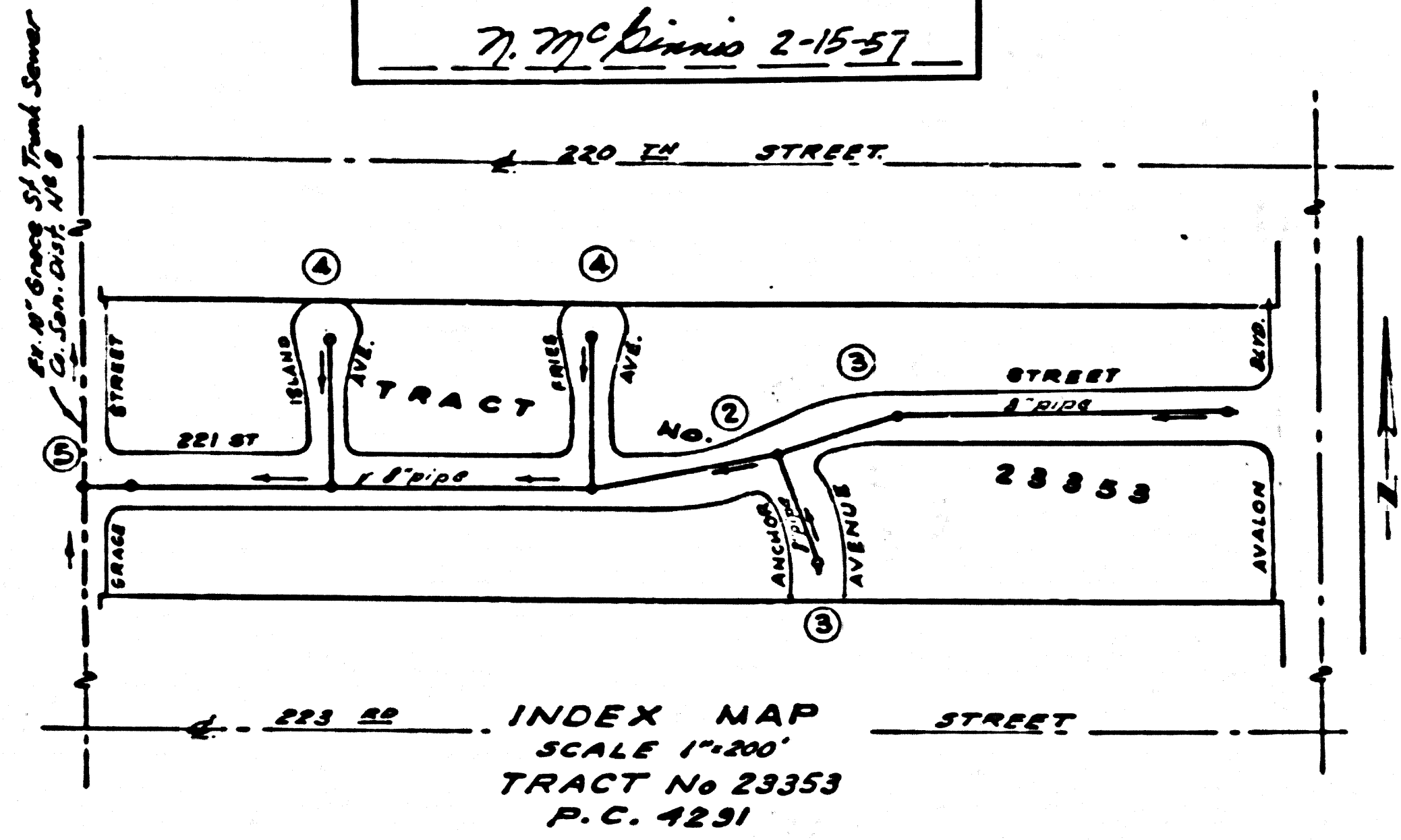
Edward L. Pearson
E.G. C. & NO. 3783

FOR LEGEND SEE PLAN NO. S-A-64

INDEX TABLE	
SHEETS	PAGES
3	5

BENCH MARK
S.Y. 238 EL. 29.712
223 22 ST. AND AVALON BLVD.
SE'LY L&T. STRADDLE AT
CENTERLINES INTERSECTION

NO CHARGE
FOR CONNECTIONS
7.770 Revised 2-15-57



- NOTES
- PROVIDE STAKES ON THE PROPERTY LINE OR PROPERTY LINES PRODUCED AT RIGHT ANGLES TO THE SEWER LINE AT THE CENTER LINE OF EACH MANHOLE.
 - NO REPRESENTATIVE OF THE COUNTY ENGINEER WILL SURVEY OR LAYOUT ANY PORTION OF THIS WORK.
 - THE OWNER OR HIS AUTHORIZED REPRESENTATIVE SHALL FURNISH THE COUNTY ENGINEER WITH GRADE SHEETS AND STATION FOR ALL HOUSE LATERALS AND T. MANHOLES AND SHALL PROVIDE STAKES FOR THEM AT THEIR PROPER LOCATIONS WITH STATIONING PLAINLY MARKED. ANY CHANGE IN LOCATION SHALL BE REQUESTED IN WRITING BY THE OWNER OR HIS REPRESENTATIVE.
 - NO REVISIONS SHALL BE MADE IN THESE PLANS WITHOUT THE APPROVAL OF THE COUNTY ENGINEER.
 - USE STANDARD MANHOLE FRAMES AND COVERS, S-A-117, EXCEPT AS NOTED.
 - USE STANDARD STRENGTH PIPE EXCEPT AS NOTED.
 - USE CHURCH MOTAR FOR ALL VITRIFIED CLAY PIPE JOINTS.
 - RESURFACE ALL PAVED DRIVEWAYS AREA TO MEET L.A. COUNTY ROAD DEPT. OR CALIF. STATE HIGHWAY DEPT. REQUIREMENTS IN ACCORDANCE WITH PERMITS.
 - ENCASE FOUR FEET OF SEWER AT POINTS OF INTERFERENCE WITH POLES, S-A-119.
 - HOUSE LATERALS TO BE CONSTRUCTED WITH INVERTS AT PROPERTY LINE 6" FEET BELOW CURB GRADE.
 - ALL STRUCTURES SHALL BE BRICK LEMER STRUCTURES, S-A-184, EXCEPT AS NOTED.
 - FOR ALLOWABLE LEAKAGE TEST USE FORMULA NO. 1 SPEC. 3, SEC. 84.
 - MANHOLE TOPS IN UNIMPROVED RIGHTS-OF-WAY TO BE 6" ABOVE FINISHED GRADE.
 - THE INDICATION OR OMISSION OF EXISTING SUBSTRUCTURES SHALL BE NO WAY RELY THE CONTRACTOR FROM THE RESPONSIBILITY OF VERIFYING AND LOCATING SUBSTRUCTURES.
 - THE PRIVATE ENGINEER IS TO FURNISH THE HOUSE LATERAL DEPTH AT THE PROPERTY LINE BELOW THE TOP OF CURB ELEVATION FOR EACH HOUSE LATERAL, ON THE GRADE SHEET.

Before breaking into any existing structure and before final acceptance of this work, County Sanitation District should be notified in order that required inspection may be made.

NOTE: GRADES TO WHICH THIS IMPROVEMENT IS TO BE CONSTRUCTED ARE SHOWN ON PLANS AND PROFILE GRADE POINTS FOR TOP OF CURBS, CENTER LINE OF STREETS, OR CENTER LINE OF ALLEYS ARE SHOWN BY CIRCLES ON PROFILE. AT ALL POINTS BETWEEN INDICATED POINTS THE GRADE SHALL BE ESTABLISHED SO AS TO CONFORM TO A STRAIGHT LINE BETWEEN SAID DESIGNATED POINTS.

ELEVATIONS ARE IN FEET ABOVE U.S.C. & G.S. SEA LEVEL DATUM OF 1929.

THIS BELIEVING AND THE DATA HEREON ARE HEREBY MADE A PART OF THE SPECIFICATIONS.

WORK SHALL BE CONSTRUCTED ACCORDING TO SPECIFICATIONS ON FILE IN THE OFFICE OF THE COUNTY ENGINEER AND SHALL BE PROSECUTED ONLY IN THE PRESENCE OF THE COUNTY ENGINEER.

BEFORE WORK CAN BE STARTED, THE CONTRACTOR MUST OBTAIN A PERMIT TO EXCAVATE IN COUNTY STREETS FROM THE L.A. COUNTY ROAD DEPT. AND MAKE A DEPOSIT WITH THE COUNTY ENGINEER, ROOM 324 FARM ARBERLAND BUILDING, 218 20 BROADWAY SUFFICIENT TO COVER THE COST OF CONSTRUCTION INSPECTION AND RECORD PLANS.

APPROVAL OF THIS PLAN BY THE COUNTY OF LOS ANGELES DOES NOT CONSTITUTE A REPRESENTATION AS TO THE ACCURACY OF THE LOCATION OF OR THE EXISTENCE OR NON-EXISTENCE OF ANY UNDERGROUND UTILITY PIPE OR STRUCTURE WITHIN THE LIMITS OF THIS PROJECT. THIS NOTE APPLIES TO ALL PAGES.

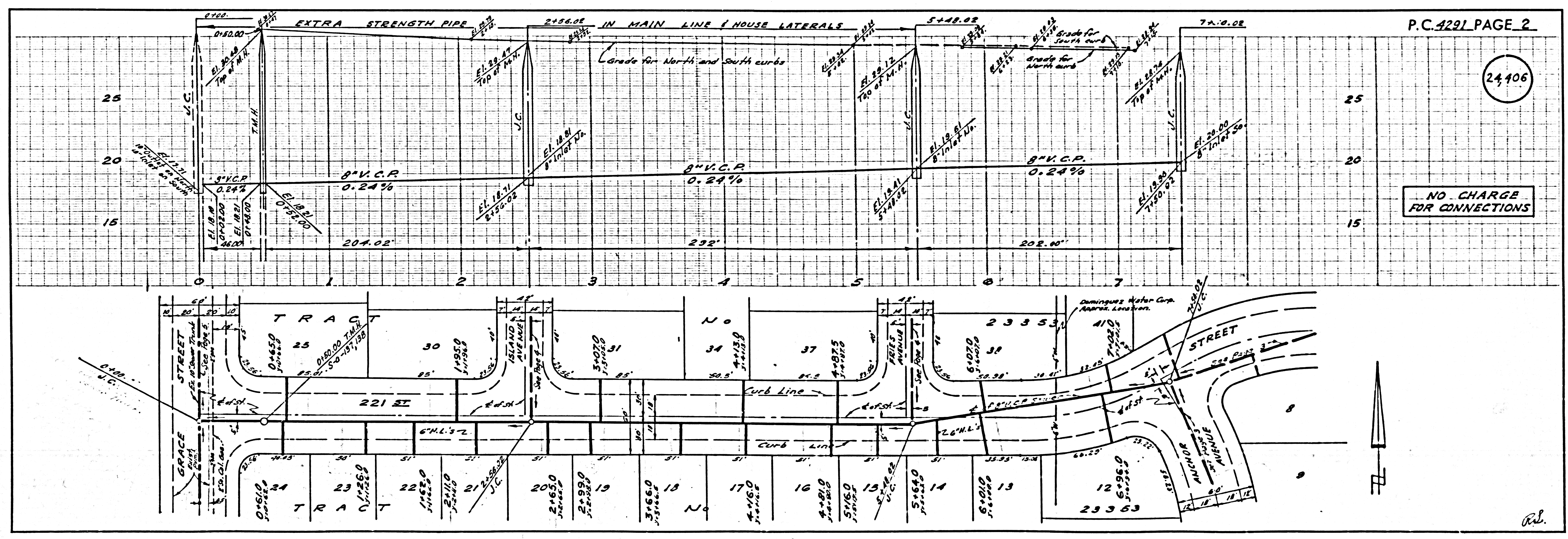
IF WORK IS TO BE DONE IN A STATE HIGHWAY, A PERMIT MUST BE OBTAINED FROM THE STATE OF CALIFORNIA, DIVISION OF HIGHWAYS, 120 SOUTH SAJINO STREET.

COUNTY OF LOS ANGELES, CALIFORNIA

APPROVED, JOHN A. LAMBE, COUNTY ENGINEER
BY: *J. A. Lambe*
SANITATION ENGINEER

APPROVED, A. M. RAWN, CHIEF ENGINEER
BY: *A. M. Rawn*
OFFICE ENGINEER

CHECKED BY: *E. L. Onda* 2-15-57
OFFICE OF COUNTY ENGINEER, S&C E. NO. 9406



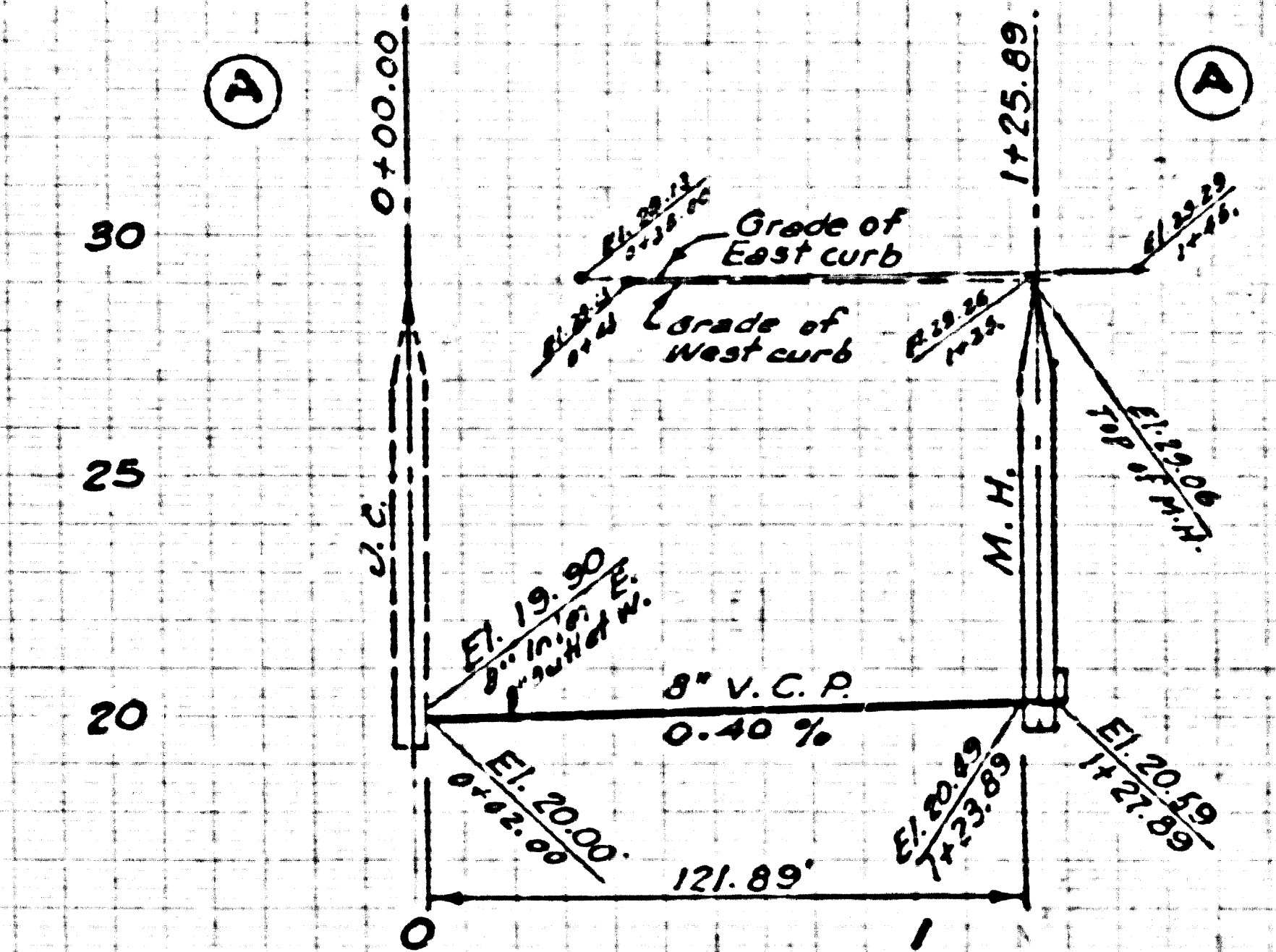
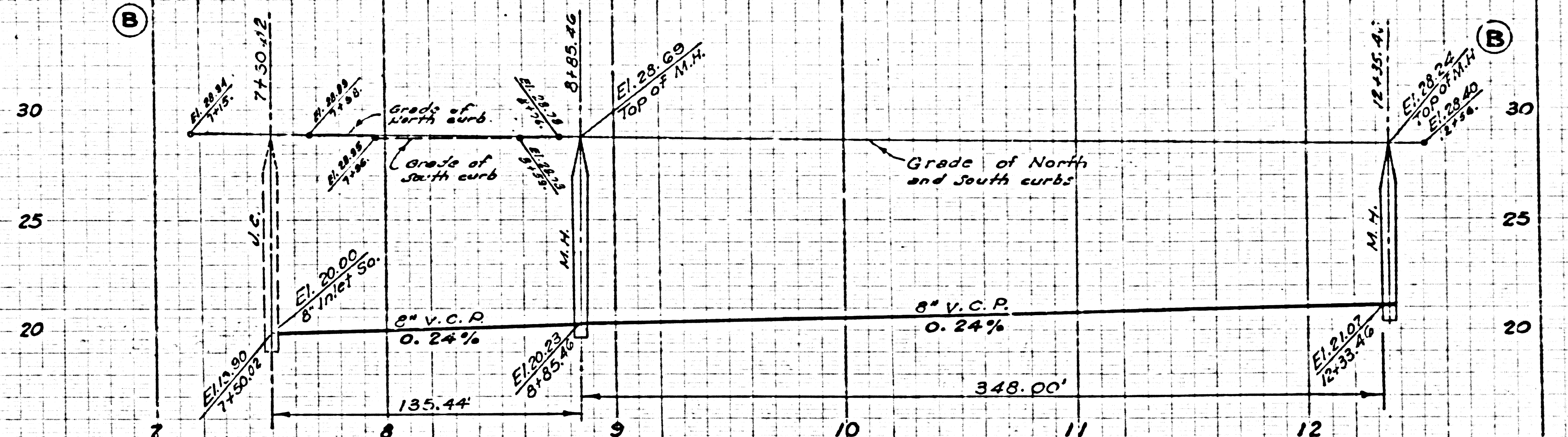
NO CHARGE FOR CONNECTIONS

P.C. 4291 PAGE 2

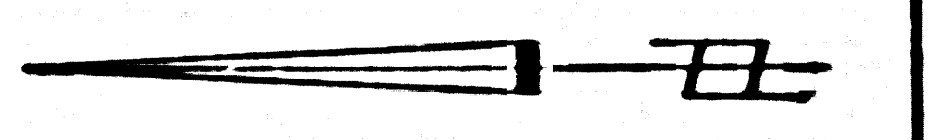
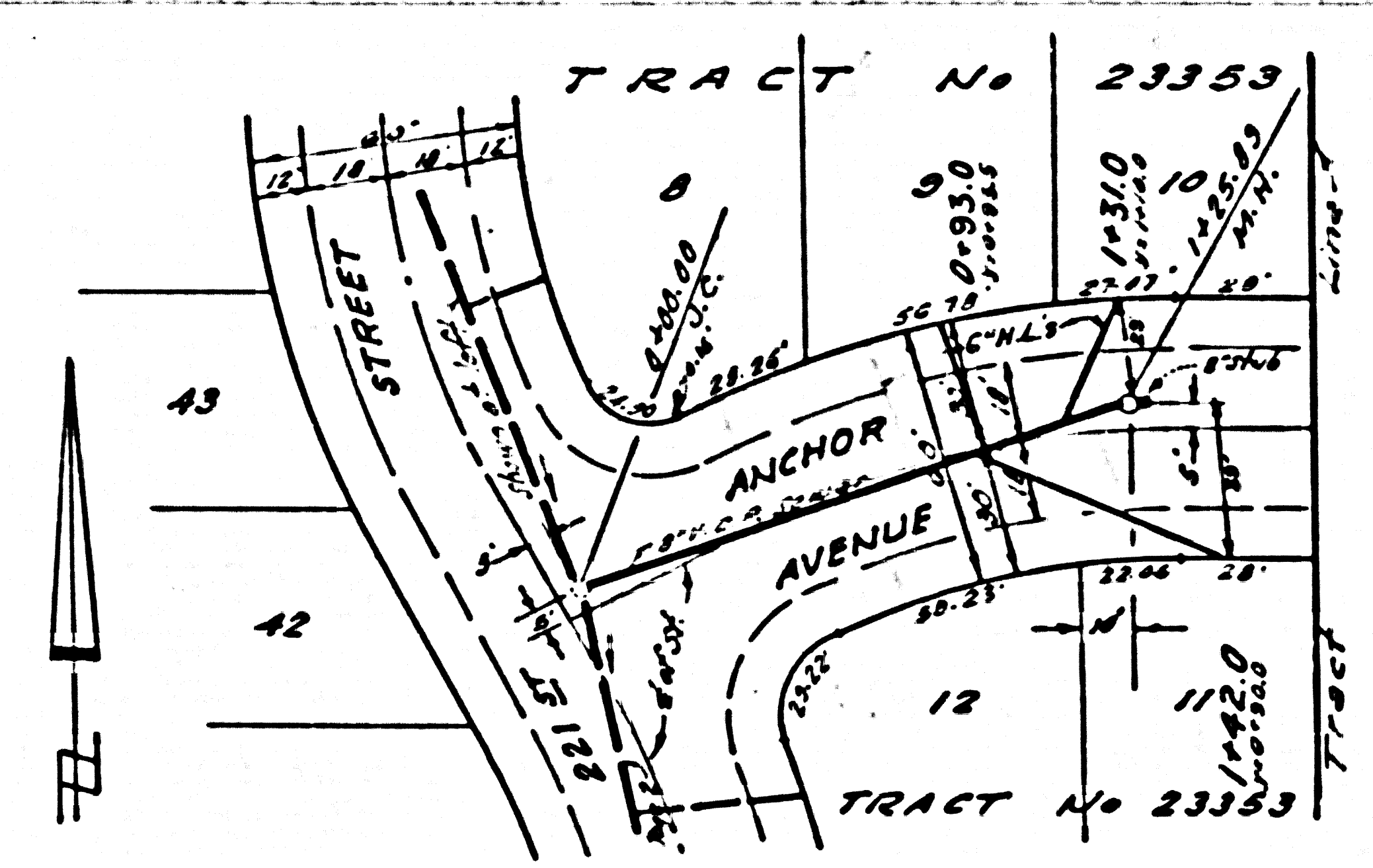
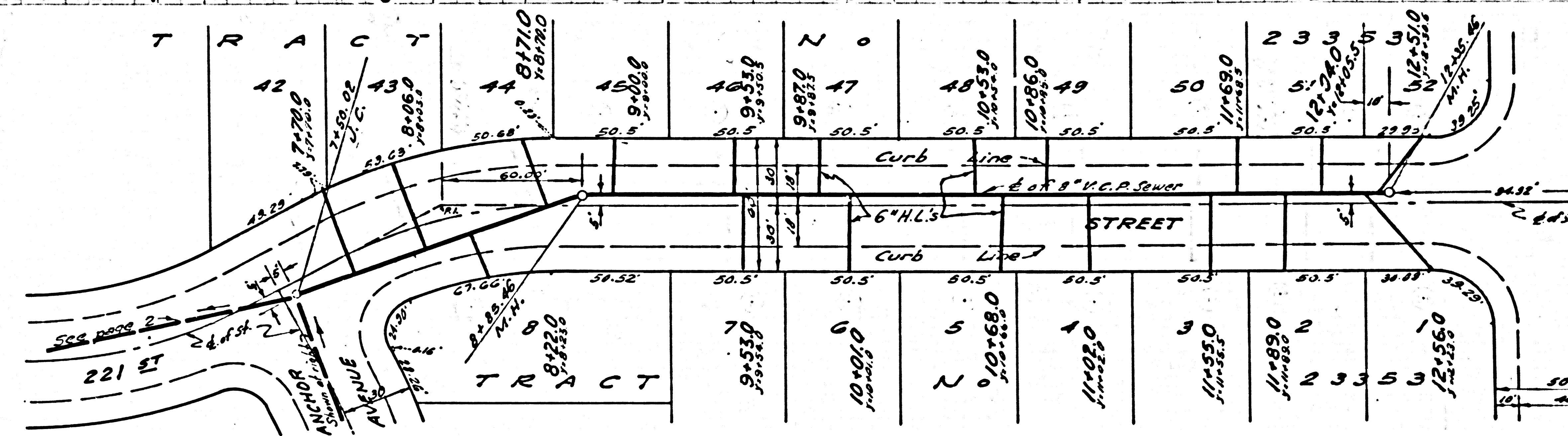
24406

BC 4521

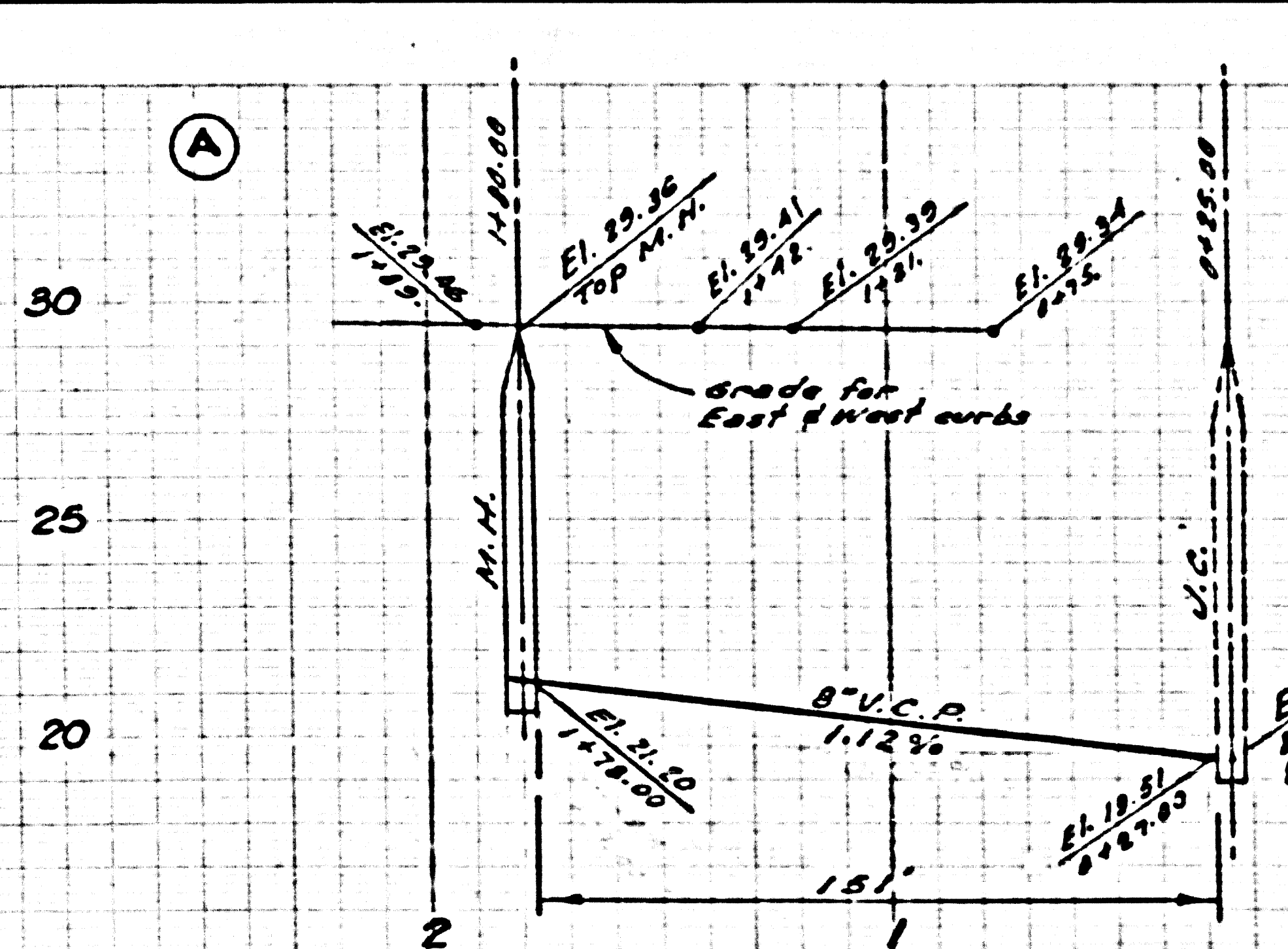
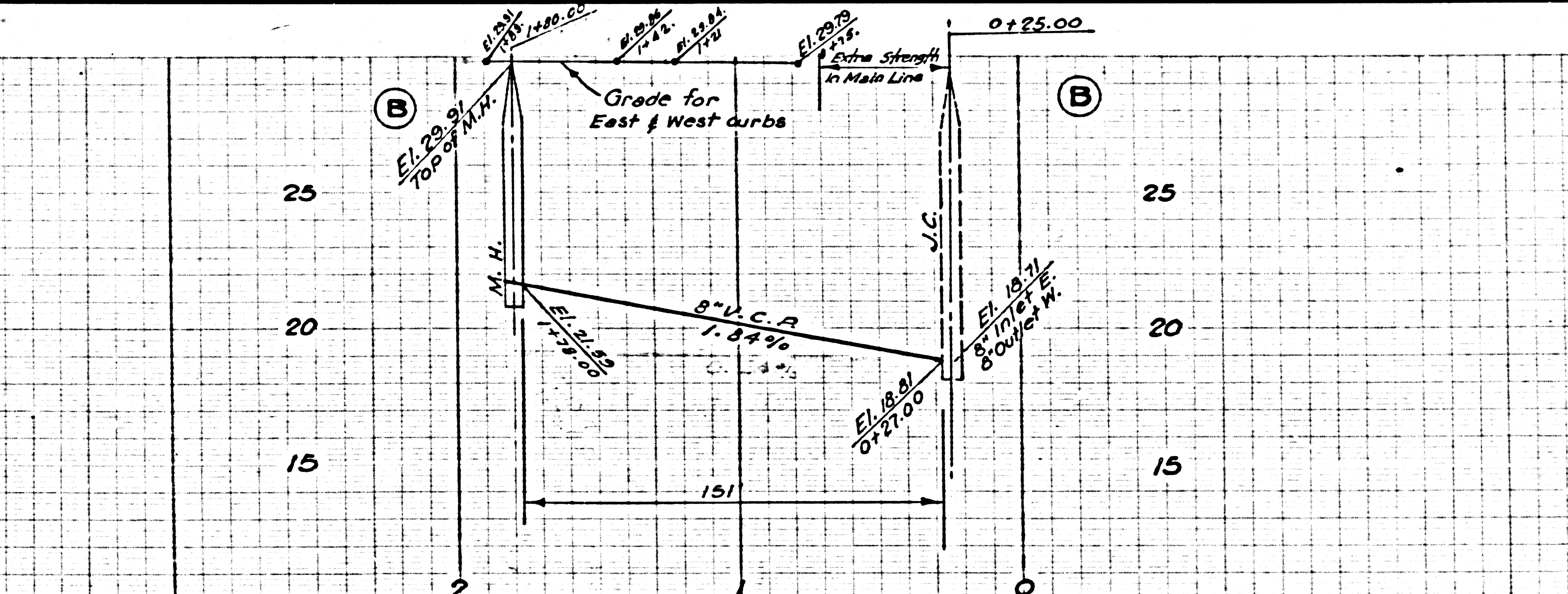
24,407



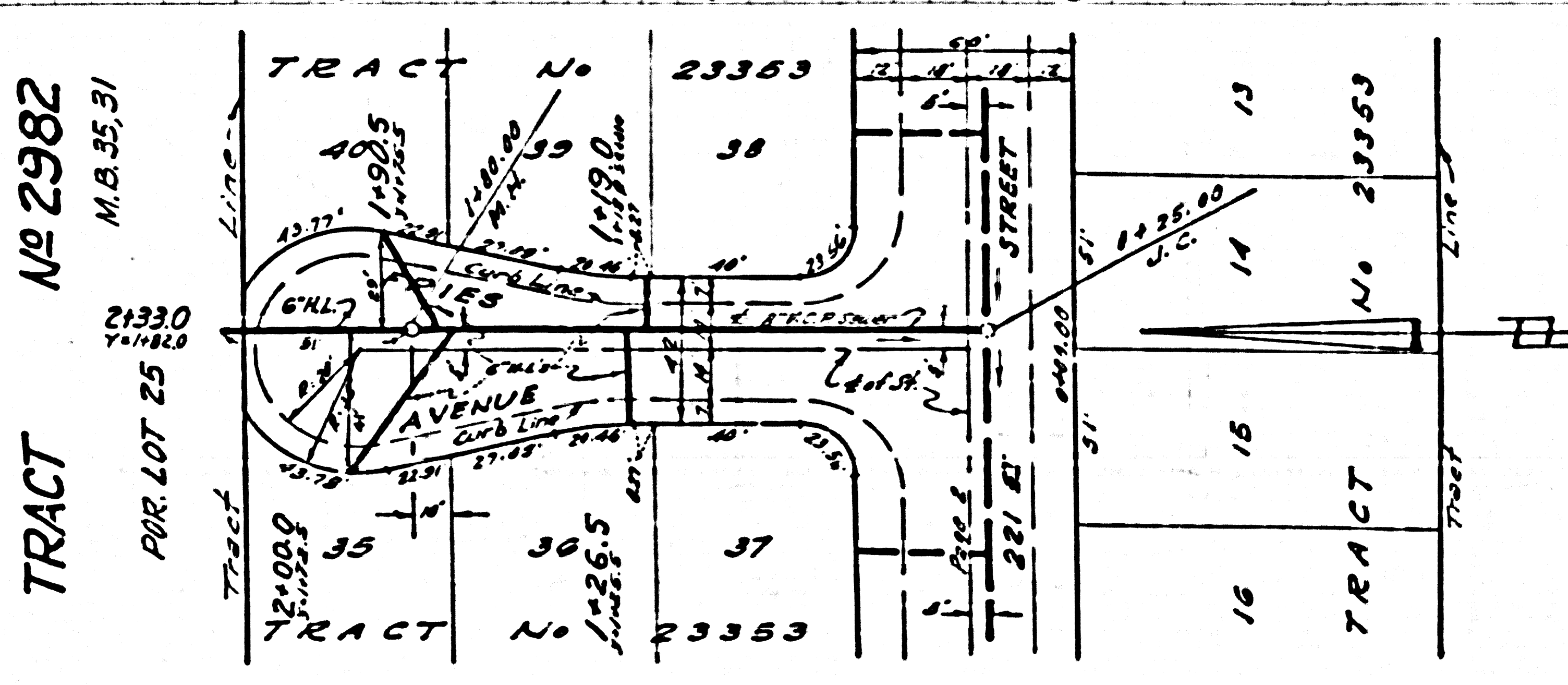
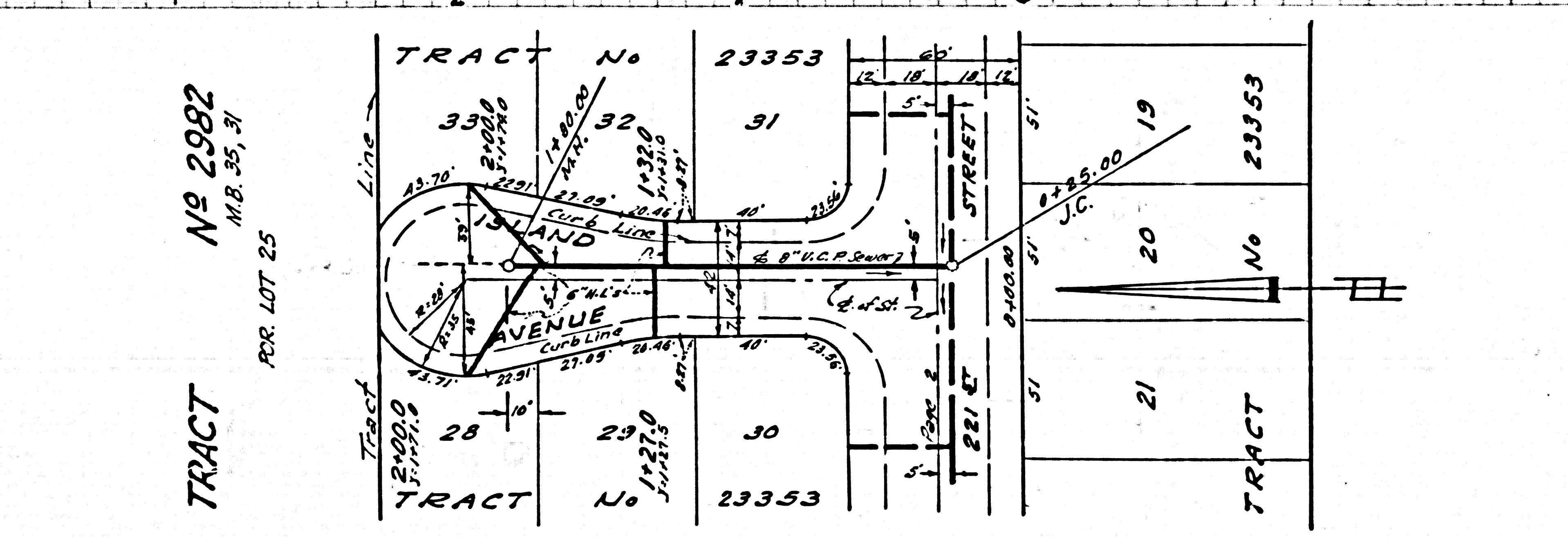
NO CHARGE FOR CONNECTIONS



24,408



NO CHARGE FOR CONNECTIONS

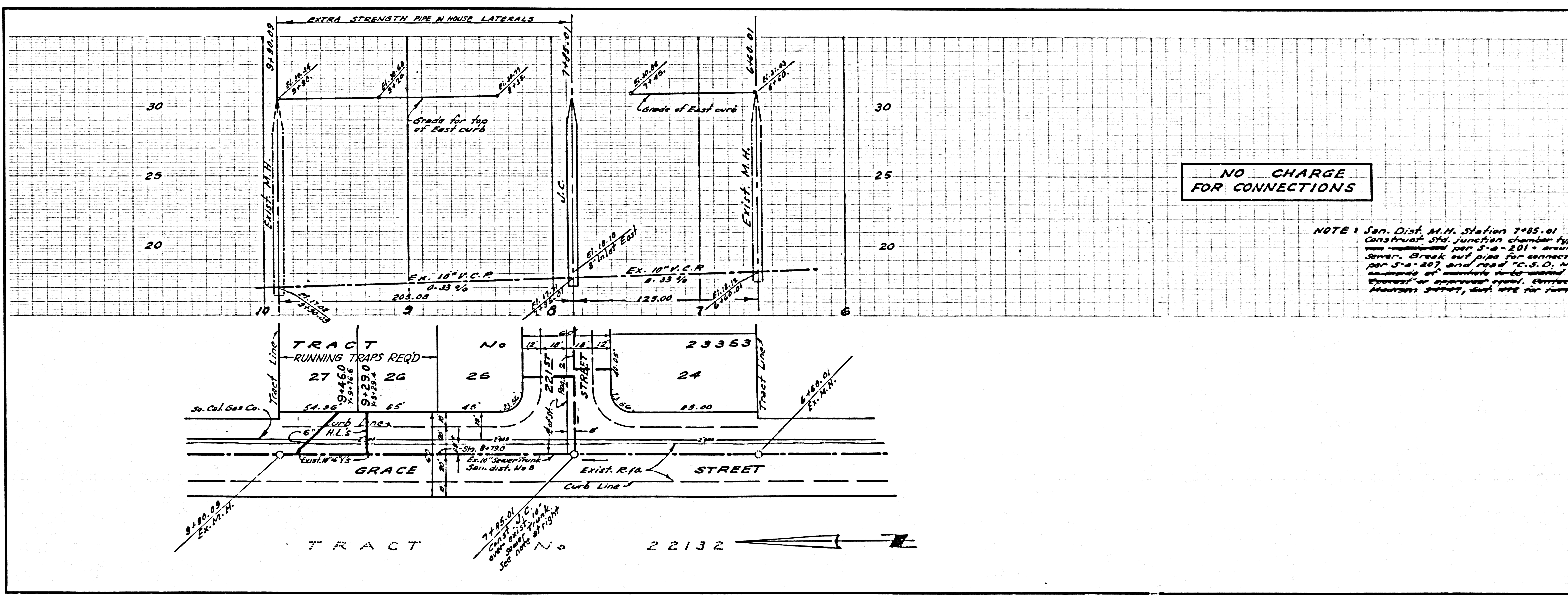


RL

24.409

NO CHARGE FOR CONNECTIONS

NOTE: San. Dist. M.H. Station 7485.01 Construct 54" junction chamber type "B" manhole per S-2-201 - around exist. 10" Trunk sewer. Break out pipe for connection; cover to be per S-2-207 and read "C.S.D. No. 8" - all quantities include 2' manhole walls - wall with Curbs - Manhole Standard as approved equal. Contact San. Dist. Bureau Bureau 3-7747, Ext. 492 for further details.



PC 4291