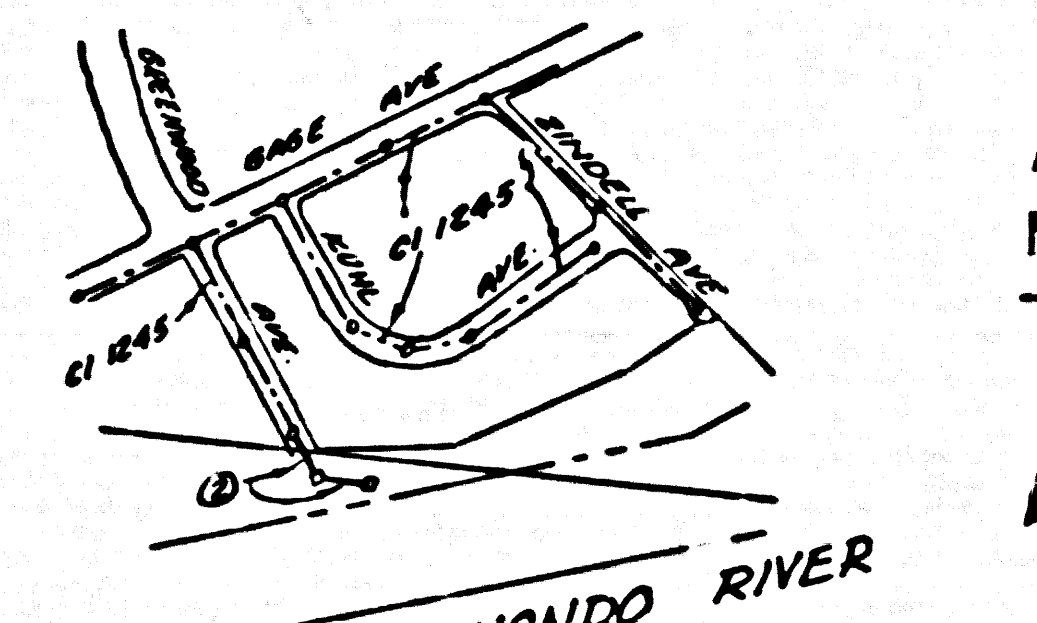


B.M. H.F. 39 C.I. 142.897  
 Meru Ave. (So. End) Br.  
 Spk. in base of Conc. Gate  
 Post. of F.C. E/W. L.A. Co. Eng.  
 F.B. 1442, 1492 12

**FIRESTONE BLDG. DIST. NO. 1**

- NOTE:  
 PROVIDE STAKES ON THE PROPERTY LINE OR PROPERTY LINES PRODUCED AT RIGHT ANGLES TO THE SEWER LINE AT THE CENTER LINE OF EACH MANHOLE.
- NO REPRESENTATIVE OF THE COUNTY ENGINEER WILL SURVEY OR LAYOUT ANY PORTION OF THE WORK.
- THE OWNER OR HIS AUTHORIZED REPRESENTATIVE SHALL FURNISH THE COUNTY ENGINEER WITH GRADE ELEVATIONS AND STATIONS FOR ALL HOUSE LATERALS AND Y BRANCHES AND SHALL PROVIDE STAKES FOR THESE AT THEIR PROPER LOCATIONS WITH STATIONING PLAINLY MARKED. ANY CHANGE IN LOCATION SHALL BE REQUESTED BY WRITING BY THE OWNER OR HIS REPRESENTATIVE.
- NO REVISIONS SHALL BE MADE IN THESE PLANS WITHOUT THE APPROVAL OF THE COUNTY ENGINEER.
- USE STANDARD MANHOLE FRAMES AND COVERS, S.A-117, EXCEPT AS NOTED.
  - USE STANDARD STRENGTH PIPE
  - USE CEMENT MORTAR FOR ALL VITRIFIED CLAY PIPE JOINTS.
  - RESURFACE ALL FINISH WITHIN PAVED AREA TO MEET L. A. COUNTY ROAD DEPT., OR CALIF. STATE HIGHWAY DEPT. REQUIREMENTS IN ACCORDANCE WITH PERMITS.
  - SHOULDER FOUR FEET OF SEWER AT POINTS OF INTERFERENCE WITH POLES, S.A-119.
  - ENCLOSURE APPROX. 10" x 10" x 10" WITH 1/2" REINFORCED CONCRETE WALLS AND 1/2" REINFORCED CONCRETE SLAB ON GRADE.
  - ALL STRUCTURES SHALL BE BRICK SEWER STRUCTURES, S.A-104, EXCEPT AS NOTED.
  - FOR ALLOWABLE LEAKAGE TEST USE FORMULA NO. 2.
  - MANHOLE TOPS IN UNIMPROVED SHORT-CUT-WAY TO BE LEVEL WITH FINISHED GRADE.



APPROVED BY:  
*Wagner Clark* 1/30/57  
 INDUSTRIAL WASTE DIVISION

NO CHARGE FOR CONNECTIONS  
 7-29-57

PROFILE ALIGNMENT AND GRADE OF P.C. 4306  
 SANITARY SEWERS PAGE 1

TO BE CONSTRUCTED IN  
**GREENWOOD AVENUE** (24,099)  
 (PRIVATE SEWERS) (2)

PRIVATE CONTRACT NO. 4306

W.S. 36  
 1 SHEET, 2 PAGES

SCALE: HORIZ. 1"=40' VERT. 1"=4'  
 JANUARY, 1957

PREPARED IN THE OFFICES OF  
**M.W. FINLEY CO.**  
 BY *Leon W. Moore*  
 REG. C. E. NO. 2117

FOR LEGEND SEE PLAN NO. S.A-64

NOTE:  
 GRADES TO WHICH THE IMPROVEMENT IS TO BE CONSTRUCTED ARE SHOWN ON PLANS AND PROFILE GRADE POINTS FOR TOP OF CURB, CENTER LINE OF STREET, OR CENTER LINE OF ALLEYS ARE SHOWN BY CIRCLES ON PROFILE AT ALL POINTS BETWEEN MANHOLES. ELEVATIONS ARE IN FEET ABOVE M.S.L. PER SANITARY DISTRICT OF 1952.

THE DRAWING AND THE DATA HEREON ARE HEREBY MADE A PART OF THE SPECIFICATIONS.

WORK SHALL BE CONSTRUCTED ACCORDING TO SPECIFICATIONS ON FILE IN THE OFFICE OF THE COUNTY ENGINEER AND SHALL BE PROSECUTED ONLY IN THE PRESENCE OF THE COUNTY ENGINEER.

BEFORE WORK CAN BE STARTED, THE CONTRACTOR MUST OBTAIN A PERMIT TO EXCAVATE IN COUNTY STREETS FROM THE L. A. COUNTY ROAD DEPT., THE W. BUREAU OF PUBLIC WORKS WITH THE COUNTY ENGINEER, ROOM 204 MAIN AMERICAN BLDG., 232 1/2 BROADWAY APPROPRIATE TO COVER THE COST OF CONSTRUCTION INSPECTION AND RECORD PLANS.

APPROVAL OF THIS PLAN BY THE COUNTY OF LOS ANGELES DOES NOT CONSTITUTE A REPRESENTATION AS TO THE ACCURACY OF THE LOCATION OF OR THE EXISTENCE OR NON-EXISTENCE OF ANY UNDERGROUND UTILITY PIPE, OR STRUCTURE WITHIN THE LIMITS OF THE PROJECT. THIS NOTE APPLIES TO ALL PAGES.

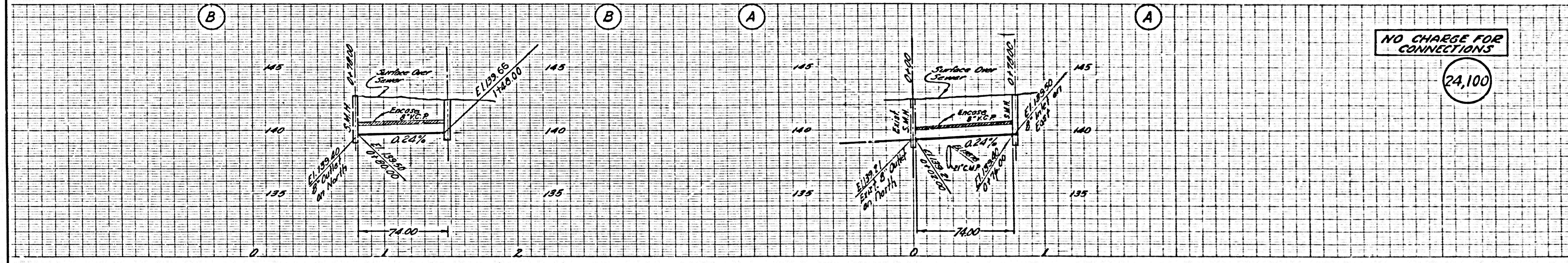
IF WORK IS TO BE DONE IN A STATE HIGHWAY, A PERMIT MUST BE OBTAINED FROM THE STATE OF CALIFORNIA, DIVISION OF HIGHWAYS, 120 SOUTH SPRING STREET.

COUNTY OF LOS ANGELES, CALIFORNIA

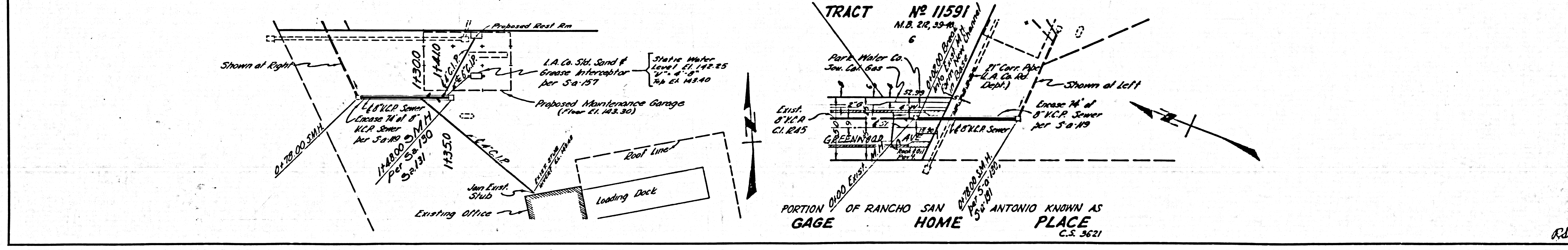
APPROVED, JOHN A. LAMBE, COUNTY ENGINEER APPROVED, A. M. BAWN, CHIEF ENGINEER  
 BY *A.P. Collins* BY *J. C. Williams*  
 SANITATION ENGINEER OFFICE ENGINEER  
 CHECKED BY *W.C. Onda* 2-5-57  
 OFFICE OF COUNTY ENGINEER, BUL. C. & NO. 5406

NOTE:  
 Approval by the County Engineer applies to 8" main line sewer and manholes only.

P.C. 4306 PAGE 2



NO CHARGE FOR CONNECTIONS  
 (24,100)



P.C. 4306

Rd.