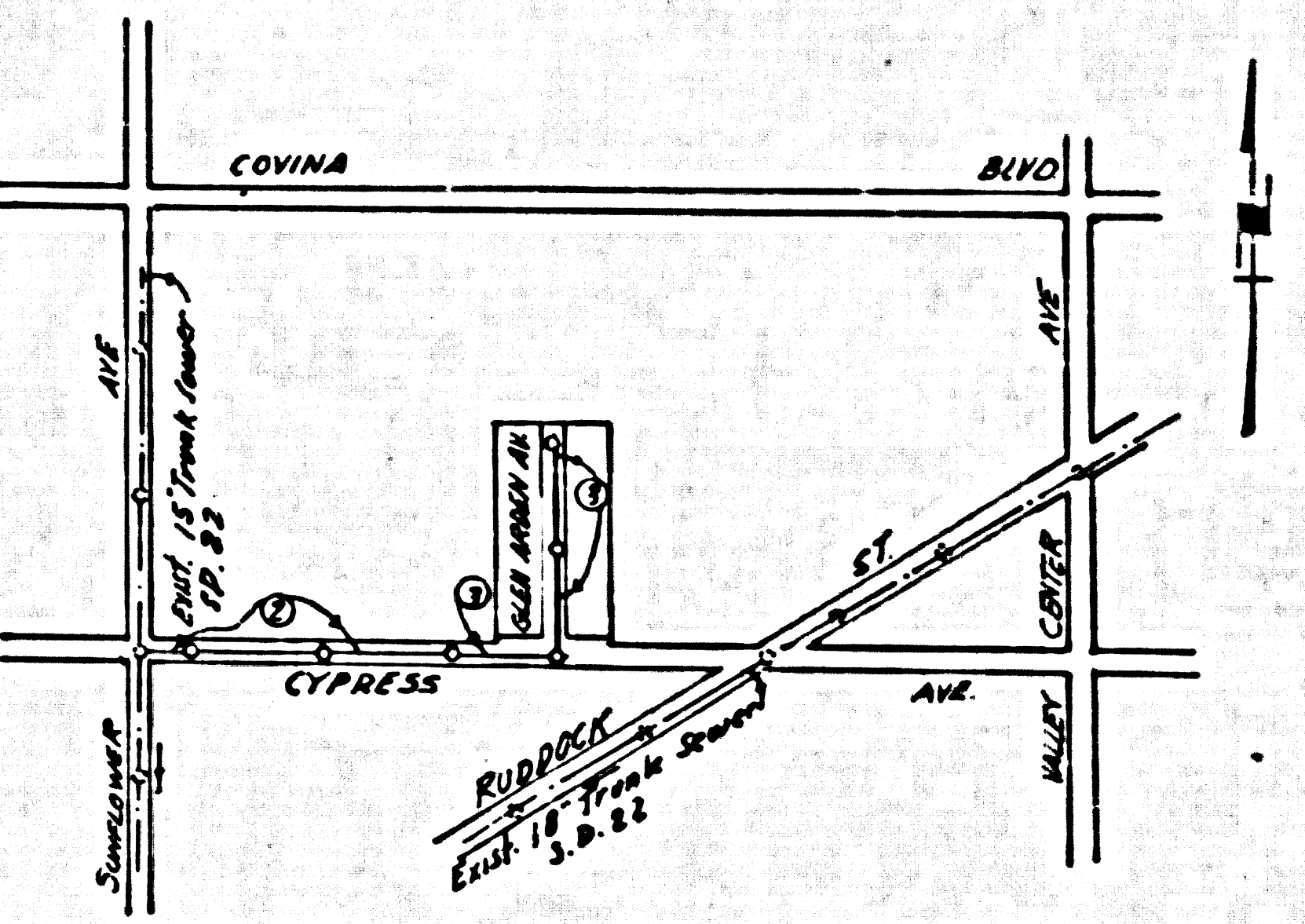


SAN DIMAS BLDG. DIST. NO. 10

PROFILE ALIGNMENT AND GRADE OF
SANITARY SEWERS P.C. 4313
 TO BE CONSTRUCTED IN PAGE 1
TRACT NO 17088 25,702

B.M. 5G. 49 Elev 785.233
 LFT in S.W. Cor of Wain box of N.E.
 Cor. of Covina Blvd. & Valley Center Ave.



INDEX MAP
 TRACT NO 17088
 P.C. 4313
 Scale 1"=600'

- NOTES
- PROVIDE STAKES IN THE PROPERTY LINE OR PROPERTY LINES PRODUCED AT RIGHT ANGLES TO THE SEWER LINE AT THE CENTER LINE OF EACH MANHOLE.
 - NO REPRESENTATIVE OF THE COUNTY ENGINEER WILL SURVEY OR LAYOUT ANY PORTION OF THE WORK.
 - THE OWNER OR HIS APPOINTED REPRESENTATIVE SHALL FURNISH THE COUNTY ENGINEER WITH GRADE SHEETS AND STATION FOR ALL HOUSE LATERALS AND Y BRANCHES AND SHALL PROVIDE STAKES FOR THEM AT THEIR PROPER LOCATIONS WITH STATING AND PLAIN MARKS. ANY CHANGE IN LOCATION SHALL BE REQUESTED BY WRITING BY THE OWNER OR HIS REPRESENTATIVE.
 - NO REVISIONS SHALL BE MADE IN THESE PLANS WITHOUT THE APPROVAL OF THE COUNTY ENGINEER.
 - SEE STANDARD MANHOLE FRAMES AND COVERS, S.A.-117, EXCEPT AS NOTED.
 - SEE STANDARD STRUCTURE PIPE EXCEPT AS NOTED.
 - SEE CEMENT MORTAR FOR ALL VITRIFIED CLAY PIPE JOINTS.
 - RESURFACE ALL DRIVEWAYS WITHIN AREA TO MEET L. A. COUNTY ROAD DEPT. OR CALIF. STATE HIGHWAY DEPT. REQUIREMENTS IN ACCORDANCE WITH FORMS.
 - ENCASE FOUR FEET OF SEWER AT POINTS OF INTERFERENCE WITH POLES, S.A. 119.
 - HOUSE LATERALS TO BE CONSTRUCTED WITH INVERTS AT PROPERTY LINE 6" FEET BELOW CURB GRADE EXCEPT AS NOTED.
 - ALL STRUCTURES SHALL BE BRICK SEWER STRUCTURES, S.A.-104, EXCEPT AS NOTED.
 - FOR ALLOWABLE LEAKAGE TEST USE FORMULA NO. 1, SPECS. SEC. 10.
 - STANDARD FORMS OF UNIMPROVED RIGHTS-OF-WAY TO BE 6' ABOVE FINISHED GRADE.
 - The private Engineer is to furnish the House Lateral depth of the property line below the top of curb elevation for each House Lateral on the grade sheet.

COLLECT CHARGES
 AS INDICATED
 2-6-57

PRIVATE CONTRACT NO. 4313
 W.S. 48
 2 SHEETS, 3 PAGES
 SCALE: 1"=6' HORIZ. 1"=6' VERT.
 MAY, 1956
 PREPARED IN THE OFFICES OF
 I. F. PACK
 BY I. F. Pack
 REG. C. E. NO. 7448

FOR LEGEND SEE PLAN NO. S-A-64

NOTE: CHANGE TO WHICH THIS IMPROVEMENT IS TO BE CONSTRUCTED ARE SHOWN ON PLANS AND PROFILES. GRADE POINTS FOR TOP OF CURB, CENTER LINE OF STREETS, OR CENTER LINE OF ALLEYS ARE SHOWN BY CIRCLES ON PROFILES AT ALL POINTS BETWEEN DESIGNATED POINTS THE GRADE SHALL BE ESTABLISHED SO AS TO CONFORM TO A STRAIGHT LINE DRAWN BETWEEN SAID DESIGNATED POINTS.

ELEVATIONS ARE IN FEET ABOVE U.S.C. & G.S. MEANS WHEN A LETTER IS GIVEN. DISTANCE AND POINTS SHALL BE PROCEEDED ONLY TO THE RESIDENCE OF THE COUNTY ENGINEER.

BEFORE WORK CAN BE STARTED, THE CONTRACTOR MUST OBTAIN A PERMIT TO EXCAVATE IN COUNTY STREETS FROM THE L. A. COUNTY ROAD DEPT. THE PERMIT SHALL BE MADE A RECORD WITH THE COUNTY ENGINEER, BOOK 224 FROM AMERICAN STANDARD, 1933 SO ROADWAY SUFFICIENT TO COVER THE COST OF CONSTRUCTION INSPECTION AND RECORD PLANS.

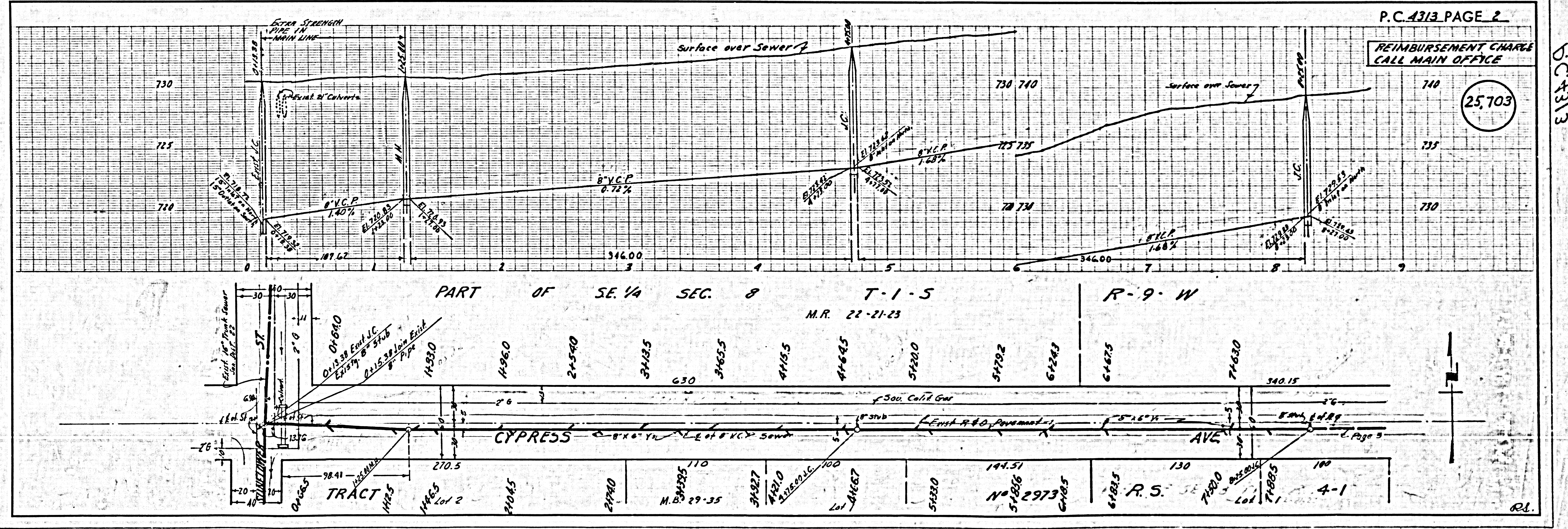
APPROVAL OF THIS PLAN BY THE COUNTY OF LOS ANGELES DOES NOT CONSTITUTE A REPRESENTATION AS TO THE ACCURACY OF THE LOCATION OF OR THE EXISTENCE OR NON-EXISTENCE OF ANY UNRECORDED RIGHT, WAY, OR STRUCTURE WITHIN THE LIMITS OF THIS PROJECT THIS NOTE APPLIES TO ALL PAGES.

IF WORK IS TO BE DONE IN A STATE HIGHWAY, A PERMIT MUST BE OBTAINED FROM THE STATE OF CALIFORNIA, DIVISION OF HIGHWAYS, 120 SOUTH SPRING STREET.

COUNTY OF LOS ANGELES, CALIFORNIA

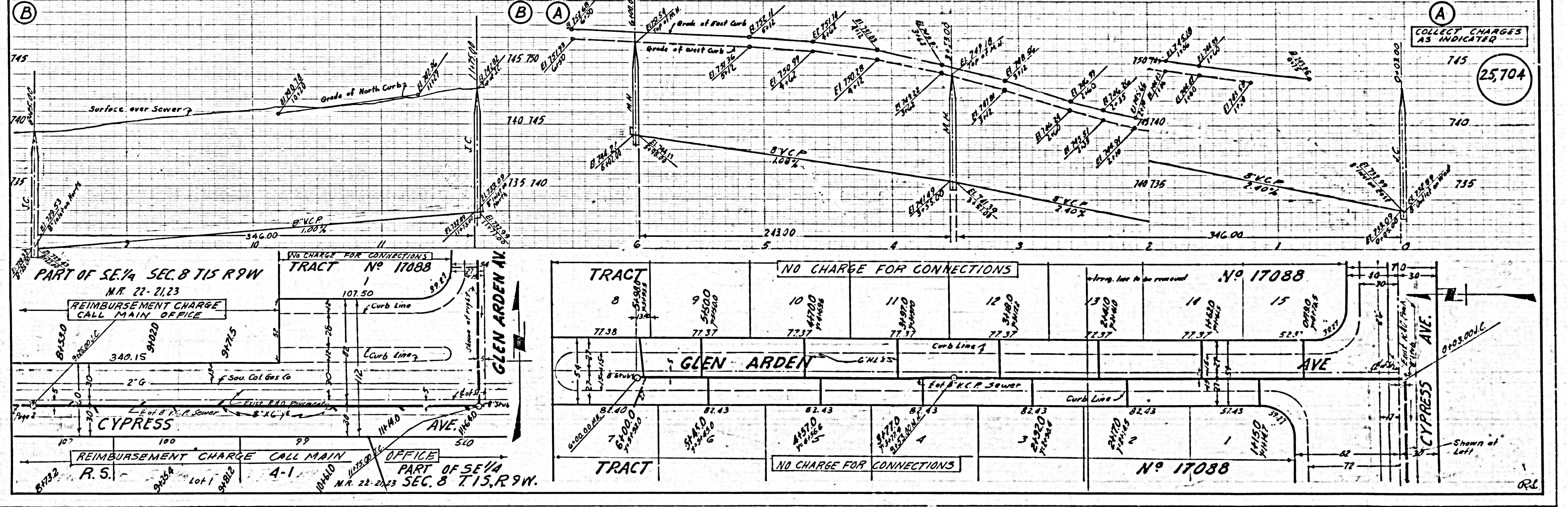
APPROVED, JOHN A. LAMBE, COUNTY ENGINEER
 APPROVED, A. M. RAWN, CHIEF ENGINEER
 BY A. P. Parris SANITATION ENGINEER
 BY A. M. Rawn CHIEF ENGINEER
 CHECKED BY S. K. Onda 2-6-57
 OFFICE OF COUNTY ENGINEER, REG. C. E. NO. 9406

Before breaking into any existing structure and before final acceptance of this work, County Sanitation District should be notified in order that required inspection may be made.



TRACT NO 17088

P.C. 4313



COLLECT CHARGES AS INDICATED

25,704

NO CHARGE FOR CONNECTIONS

TRACT No 17088

107.50

REIMBURSEMENT CHARGE CALL MAIN OFFICE

340.15

2" G

Sou. Cal. Gas Co.

EXIST. R.A.D. PIPERACK

2" X 1/2"

114.40

510

REIMBURSEMENT CHARGE CALL MAIN OFFICE

R.S. 4-1

PART OF SE 1/4 SEC. 8 T15, R9W.

M.R. 22-2123

TRACT No 17088						NO CHARGE FOR CONNECTIONS	
8	9	10	11	12	13	14	15
77.38	77.37	77.37	77.37	77.37	77.37	77.37	52.3'
GLEN ARDEN AVE							
Curb Line							
For S.W.C.P. Sewer							
Curb Line							
TRACT No 17088						NO CHARGE FOR CONNECTIONS	
7	6	5	4	3	2	1	1
82.40	82.43	82.43	82.43	82.43	82.43	82.43	57.45
CYPRESS AVE							
Curb Line							
Shown at Left							

ORL