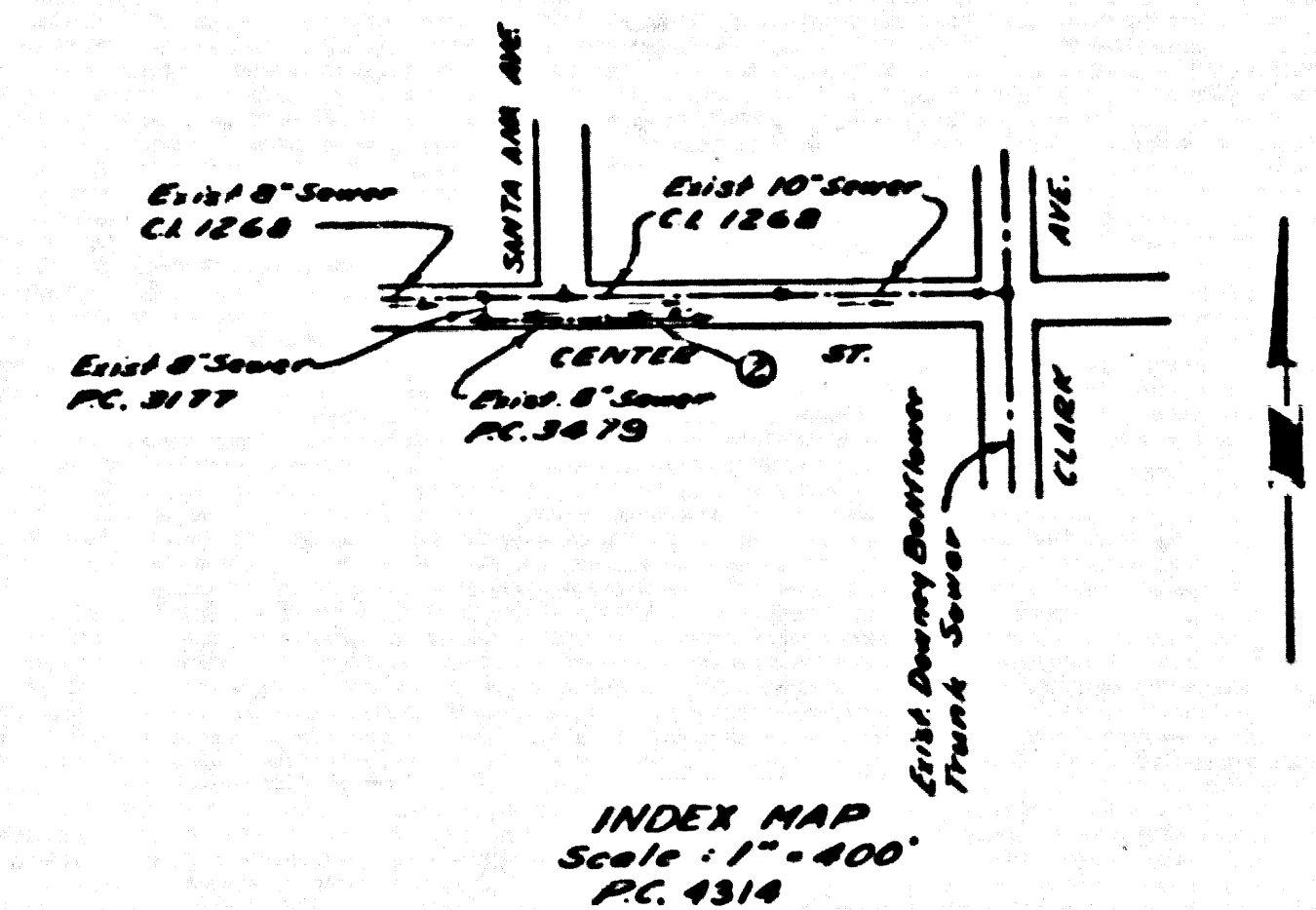


B.M. Rd. Dept. 57 2595 Elev. 69.647
 Center SA 1 Santa Ana Ave.
 Spk. in conc. pipe 24" W/ 10" W. & int.

BELLFLOWER BLDG. DIST. NO. 4

- NOTES**
- PROVIDE STAKES ON THE PROPERTY LINE OR PROPERTY LINES PRODUCED AT RIGHT ANGLES TO THE SEWER LINE AT THE CENTER LINE OF EACH MANHOLE.
 - NO REPRESENTATIVE OF THE COUNTY ENGINEER WILL SURVEY OR LAYOUT ANY PORTION OF THE WORK.
 - THE OWNER OR HIS AUTHORIZED REPRESENTATIVE SHALL FURNISH THE COUNTY ENGINEER WITH GRADE SHEETS AND STATIONING FOR ALL POLES, LATHES AND T. BRANCHES AND SHALL PROVIDE STAKES FOR THEM AT THEIR PROPOSED LOCATIONS WITH VISIBLE AND PLAINLY MARKED. ANY CHANGE IN LOCATION SHALL BE REQUESTED IN WRITING BY THE OWNER OR HIS REPRESENTATIVE.
 - NO REVISIONS SHALL BE MADE IN THESE PLANS WITHOUT THE APPROVAL OF THE COUNTY ENGINEER.
 - USE STANDARD MANHOLE FRAMES AND COVERS, S.A.117.
 - USE STANDARD STRENGTH PIPE.
 - USE CEMENT MORTAR FOR ALL VITRIFIED CLAY PIPE JOINTS.
 - RESURFACE ALL TRYPHON WITHIN PAY-BY AREA TO MEET L. A. COUNTY ROAD DEPT. OR CALIF. STATE HIGHWAY DEPT. REQUIREMENTS IN ACCORDANCE WITH FRAMES.
 - INCISE FOUR FEET OF SEWER AT POINTS OF INTERFERENCE WITH POLES, S.A.117.
 - HOUSES ADJACENT TO BE CONSTRUCTED WITH DRAINAGE TO THE SEWER MAIN AND GRADE SHEET AS NOTED.
 - ALL STRUCTURES SHALL BE BRICK SEWER STRUCTURES, S.A.104.
 - FOR ALLOWABLE LEAKAGE TEST USE PLUMBING NO. 1 SPEC. S. E. 24.
 - MANHOLES SHALL BE APPROVED BEFORE OR AFTER TO BE APPROVED BEFORE GRADE.

**NO CHARGE
 FOR CONNECTIONS**
 S.V. Oude 2-18-57



PROFILE ALIGNMENT AND GRADE OF **P.C. 4314**
SANITARY SEWERS PAGE **1**
 TO BE CONSTRUCTED IN

CENTER STREET (24,198)
PRIVATE CONTRACT NO. 4314

W.S. 33
 1 SHEET, 2 PAGES
 SCALE: VERT. 1"=4' HORIZ. 1"=40'
 JANUARY, 1957
 PREPARED IN THE OFFICES OF
MANNING & DETILLA

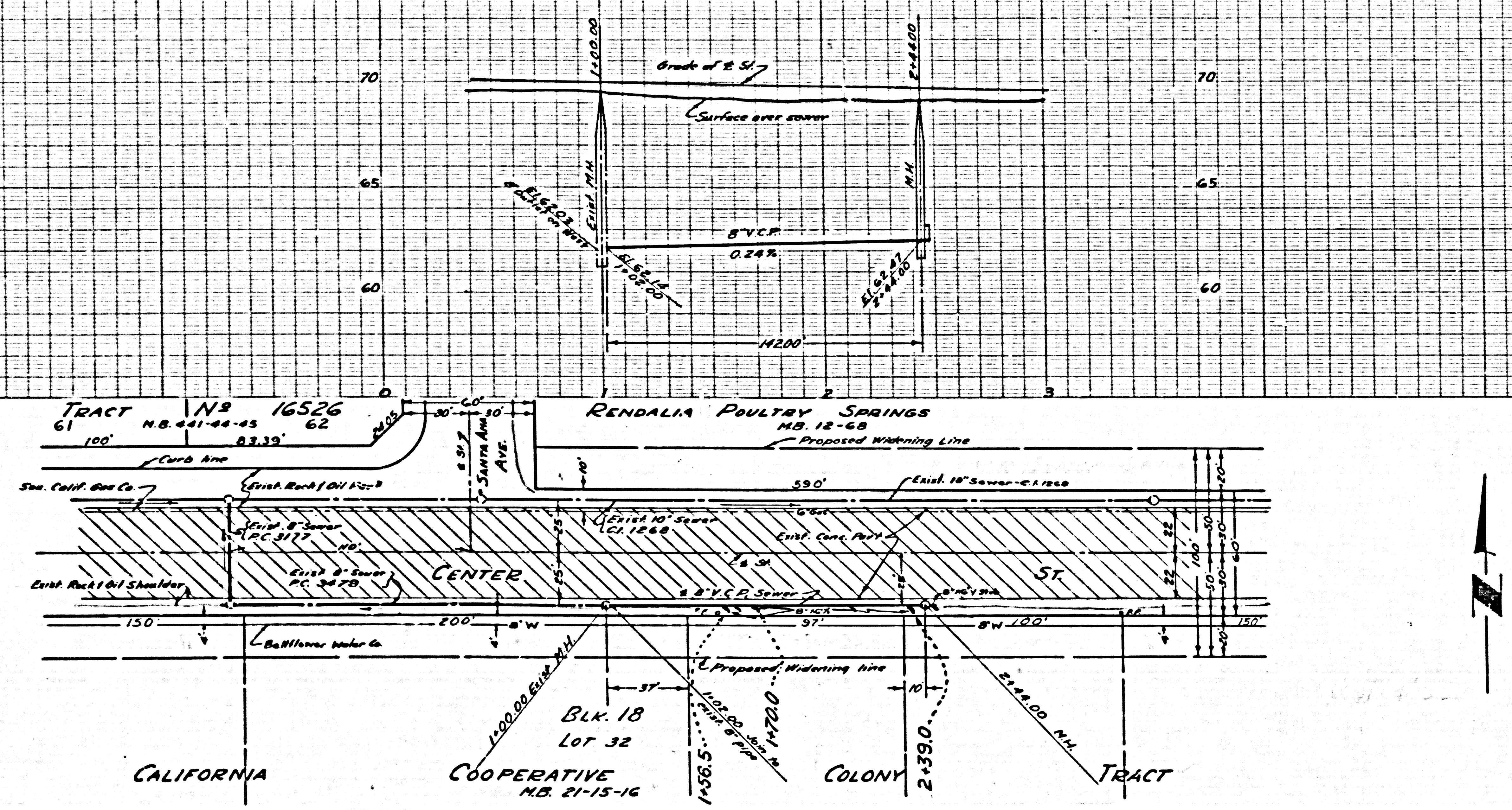
By: *J. L. Manning*
 REG. C. E. NO. 7676
 FOR LEGEND SEE PLAN NO. S-A-64

NOTE
 GRADES TO WHICH THIS IMPROVEMENT IS TO BE CONSTRUCTED ARE SHOWN ON PLANS AND PROFILE. GRADE POINTS FOR TOP OF CURBS, CENTER LINE OF STREETS, OR CENTER LINE OF ALLEYS ARE SHOWN BY CIRCLES ON PROFILES. AT ALL POINTS BETWEEN DESIGNATED POINTS THE GRADE SHALL BE ESTABLISHED SO AS TO CONFORM TO A STRAIGHT LINE DRAWN BETWEEN SAID DESIGNATED POINTS.
 RELATIONS ARE IN FEET ABOVE U.S.C.G.S. SEA LEVEL DATUM OF 1929.
 THIS DRAWING AND THE DATA HEREON ARE HEREBY MADE A PART OF THE SPECIFICATIONS.
 BEFORE WORK CAN BE STARTED, THE CONTRACTOR MUST OBTAIN A PERMIT TO EXCAVATE IN COUNTY STREETS AND SHALL BE PROSECUTED ONLY IN THE PRESENCE OF THE COUNTY ENGINEER.
 BEFORE WORK CAN BE STARTED, THE CONTRACTOR MUST OBTAIN A PERMIT TO EXCAVATE IN COUNTY STREETS FROM THE L. A. COUNTY ROAD DEPT., 108 W. 2ND ST. AND MAKE A DEPOSIT WITH THE COUNTY ENGINEER, ROOM 124 PAM AMERICAN BUILDING, 215 SO. BROADWAY SUFFICIENT TO COVER THE COST OF CONSTRUCTION INSPECTION AND RECORD PLANS.
 APPROVAL OF THIS PLAN BY THE COUNTY OF LOS ANGELES DOES NOT CONSTITUTE A REPRESENTATION AS TO THE ACCURACY OF THE LOCATION OF OR THE EXISTENCE OR NON-EXISTENCE OF ANY UNDERGROUND UTILITY PIPE, OR STRUCTURE WITHIN THE LIMITS OF THIS PROJECT. THE NOTE APPLIES TO ALL PAGES.
 IF WORK IS TO BE DONE IN A STATE HIGHWAY, A PERMIT MUST BE OBTAINED FROM THE STATE OF CALIFORNIA, DIVISION OF HIGHWAYS, 128 SOUTH SPRING STREET.

COUNTY OF LOS ANGELES, CALIFORNIA
 APPROVED, JOHN A. LAMBE, COUNTY ENGINEER
 APPROVED, A. M. RAWN, CHIEF ENGINEER
 BY: *A. P. Collins* SANITATION ENGINEER
 BY: *J. L. Manning* OFFICE ENGINEER
 CHECKED BY: *S. V. Oude* 2-18-57
 OFFICE OF COUNTY ENGINEER, REG. C. E. NO. 3459

P.C. 4314 PAGE 2

(24,199)
**NO CHARGE
 FOR CONNECTIONS**



A1842C

OR.