

B.M.U.S. 3171 - RR 37-1929
 CONC. MONUMENT WITH BRASS CAP
 ABOUT 36 FT. NO. OF E. INT. AVENUE I &
 20TH STREET WEST.
 ELEV. 2325.041

LANCASTER BLDG. DIST. NO. 8

PROFILE ALIGNMENT AND GRADE OF P.C. 4315
 SANITARY SEWERS PAGE 1
 TO BE CONSTRUCTED IN

TRACT N^o 19473 (25,317)

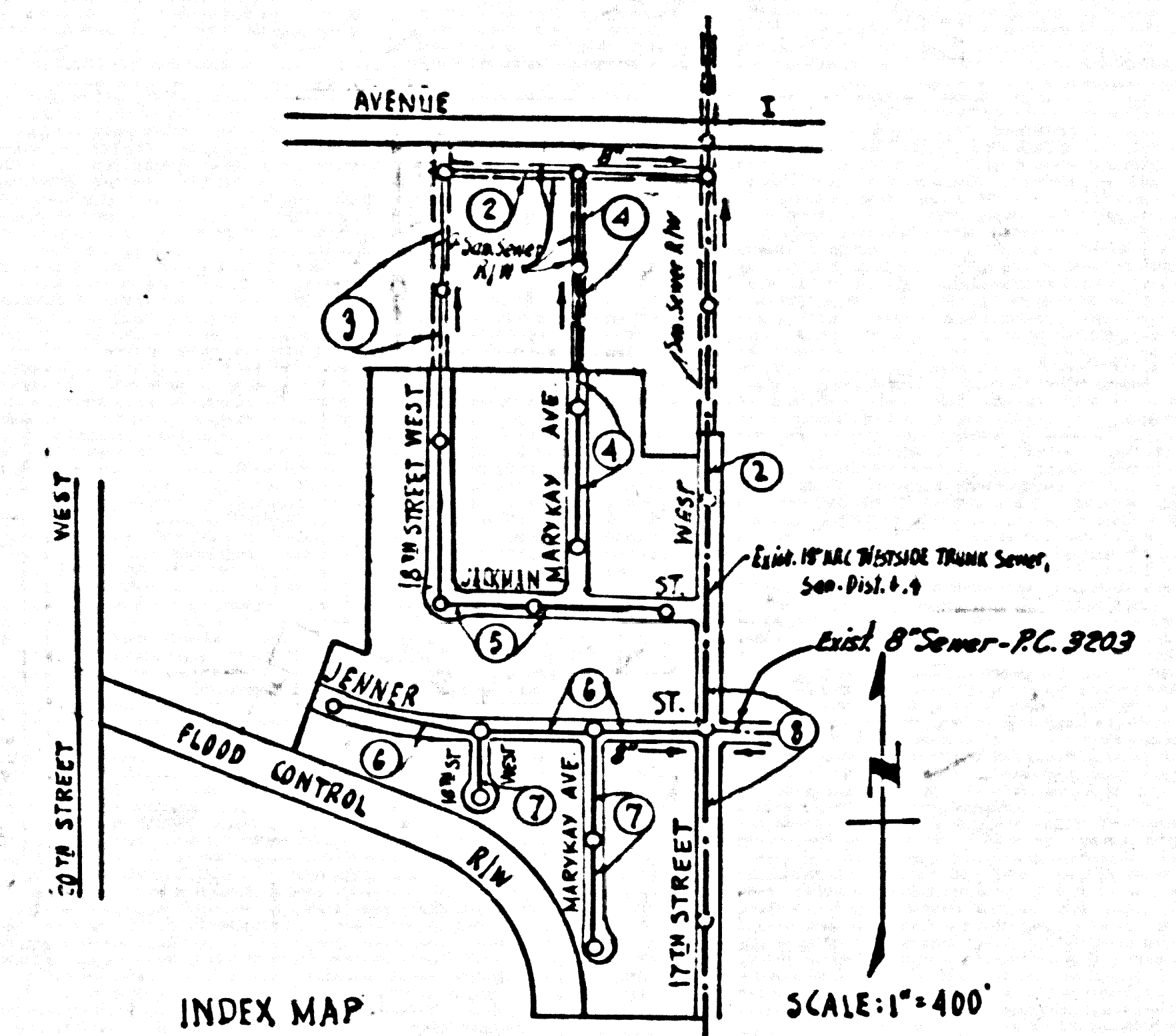
PRIVATE CONTRACT NO. 4315

W.S. 71
 4 SHEETS, 8 PAGES
 SCALE: 1" = 10' JANUARY, 1957

ROSENTHAL ENGINEERING CO.

FOR LEGEND SEE PLAN NO. S-A 64

- NOTES
- PROVIDE STAKES ON THE PROPERTY LINE OR PROPERTY LINES PRODUCED AT RIGHT ANGLES TO THE SEWER LINE AT THE CENTER LINE OF EACH BRANCH.
 - NO REPRESENTATIVE OF THE COUNTY ENGINEER WILL SURVEY OR LAYOUT ANY PORTION OF THE WORK.
 - THE OWNER OR HIS APPOINTED REPRESENTATIVE SHALL FURNISH THE COUNTY ENGINEER WITH GRADE SHEETS AND STATION FOR ALL HOUSE LATERALS AND Y BRANCHES AND SHALL PROVIDE STAKES FOR THESE AT THEIR PROPER LOCATIONS WITH STATION AND PLANNY MARKS. ANY CHANGE IN LOCATION SHALL BE REQUESTED IN WRITING BY THE OWNER OR HIS REPRESENTATIVE.
 - NO REVISIONS SHALL BE MADE IN THESE PLANS WITHOUT THE APPROVAL OF THE COUNTY ENGINEER.
 - USE STANDARD MANHOLE FRAMES AND COVERS, S-A-117, EXCEPT AS NOTED.
 - USE STANDARD STRENGTH PIPE EXCEPT AS NOTED.
 - USE CHIMNEY BRICK FOR ALL VENTING CLAY PIPE JOINTS.
 - RESURFACE ALL TRENCH WITHIN PAVED AREA TO MEET L. A. COUNTY ROAD DEPT. OR CALIF. STATE HIGHWAY DEPT. SPECIFICATIONS IN ACCORDANCE WITH PERMITS.
 - ENCASE FOUR FEET OF SEWER AT POINTS OF INTERFERENCE WITH POLES, S-A-119.
 - HOUSE LATERALS TO BE CONSTRUCTED WITH INVERTS AT PROPERTY LINE... 6" FEET BELOW CURB GRADE EXCEPT AS NOTED.
 - ALL STRUCTURES SHALL BE BRICK SEWER STRUCTURES, S-A-104, EXCEPT AS NOTED.
 - FOR ALLOWABLE LEAKAGE TEST USE FORMULA NO. 1, SPEC. 1, SEC. 10.
 - MANHOLE TOPS IN UNPAVED RIGHTS-OF-WAY TO BE 4" ABOVE FINISHED GRADE.
 - THE PRIVATE ENGINEER IS TO FURNISH THE HOUSE LATERAL DEPTH AT THE PROPERTY LINE BELOW THE TOP OF CURB ELEVATION FOR EACH HOUSE LATERAL ON THE GRADE SHEET.
 - BALL ALL PIPE JOINTS THAT ARE WITHIN 20 FEET OF ANY PROPERTY LINE OR IN SANITARY SEWER RIGHTS-OF-WAY, WITH 4" OF LEHMERT MORTAR.



NO CHARGE FOR CONNECTIONS
 7. 7th 3-18-57

GRADES TO WHICH THIS INSTRUMENT IS TO BE CONSTRUCTED AND SHOWN ON PLANS AND PROFILES GRADE POINTS FOR FOR OF CURBS, CENTER LINE OF STREETS, OR CENTER LINE OF ALLEYS ARE SHOWN BY CIRCLES ON PROFILES AT ALL POINTS BETWEEN BRANCHING POINTS THE GRADE SHALL BE ESTABLISHED SO AS TO CONFORM TO A STRAIGHT LINE DRAWN BETWEEN SAID BRANCHING POINTS.

RELEVATIONS ARE IN FEET ABOVE U.S.C. & G.S. SEA LEVEL DATUM OF 1929.

THIS DRAWING AND THE DATA HEREON ARE HEREBY MADE A PART OF THE SPECIFICATIONS.

WORK SHALL BE CONSTRUCTED ACCORDING TO SPECIFICATIONS ON FILE IN THE OFFICE OF THE COUNTY ENGINEER AND SHALL BE PROSECUTED ONLY IN THE PRESENCE OF THE COUNTY ENGINEER.

BEFORE WORK CAN BE STARTED THE CONTRACTOR MUST OBTAIN A PERMIT TO EXCAVATE IN COUNTY STREETS FROM THE L. A. COUNTY ROAD DEPT. FOR 10' AND MAKE A REPORT WITH THE COUNTY ENGINEER, ROOM 104 FROM AMERICAN BLDG. 218 SO. BROADWAY SUFFICIENT TO COVER THE COST OF CONSTRUCTION INSPECTION AND RECORD PLANS.

APPROVAL OF THIS PLAN BY THE COUNTY OF LOS ANGELES DOES NOT CONSTITUTE A REPRESENTATION AS TO THE ACCURACY OF THE LOCATION OF OR THE EXISTENCE OR NON-EXISTENCE OF ANY UNDERGROUND UTILITY PIPE OR STRUCTURE WITHIN THE LIMITS OF THIS PROJECT THIS NOTE APPLIES TO ALL PAGES.

IF WORK IS TO BE DONE ON A STATE HIGHWAY, A PERMIT MUST BE OBTAINED FROM THE STATE OF CALIFORNIA, DIVISION OF HIGHWAYS, 120 SOUTH SPRING STREET.

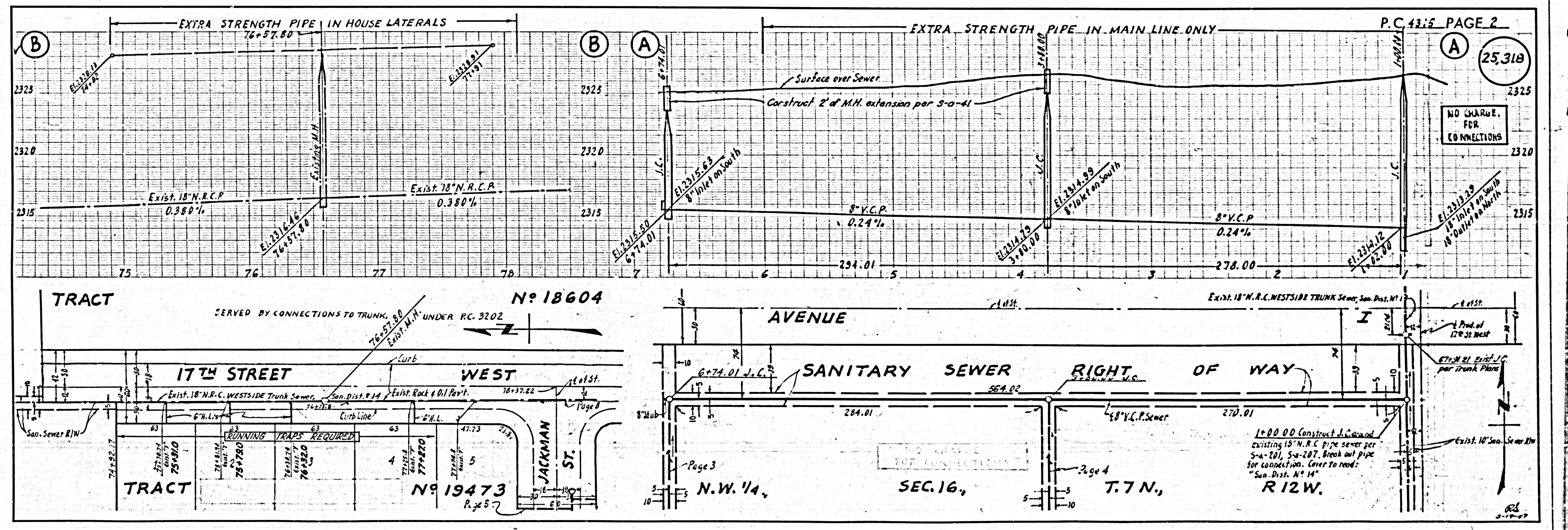
COUNTY OF LOS ANGELES, CALIFORNIA

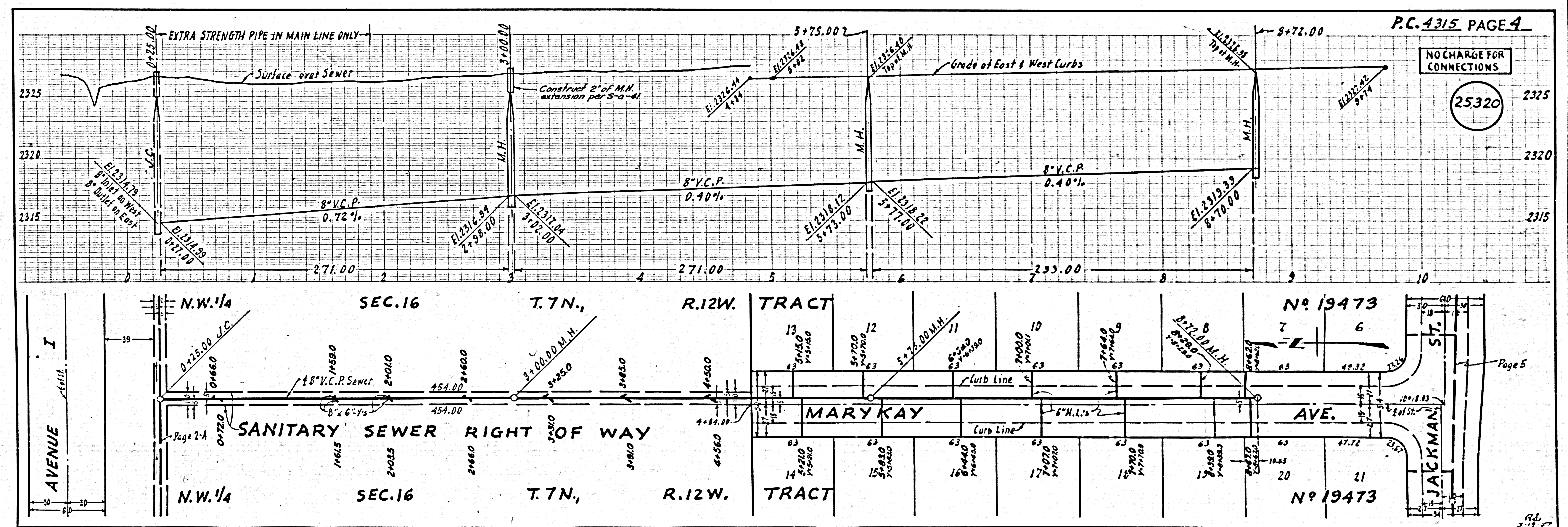
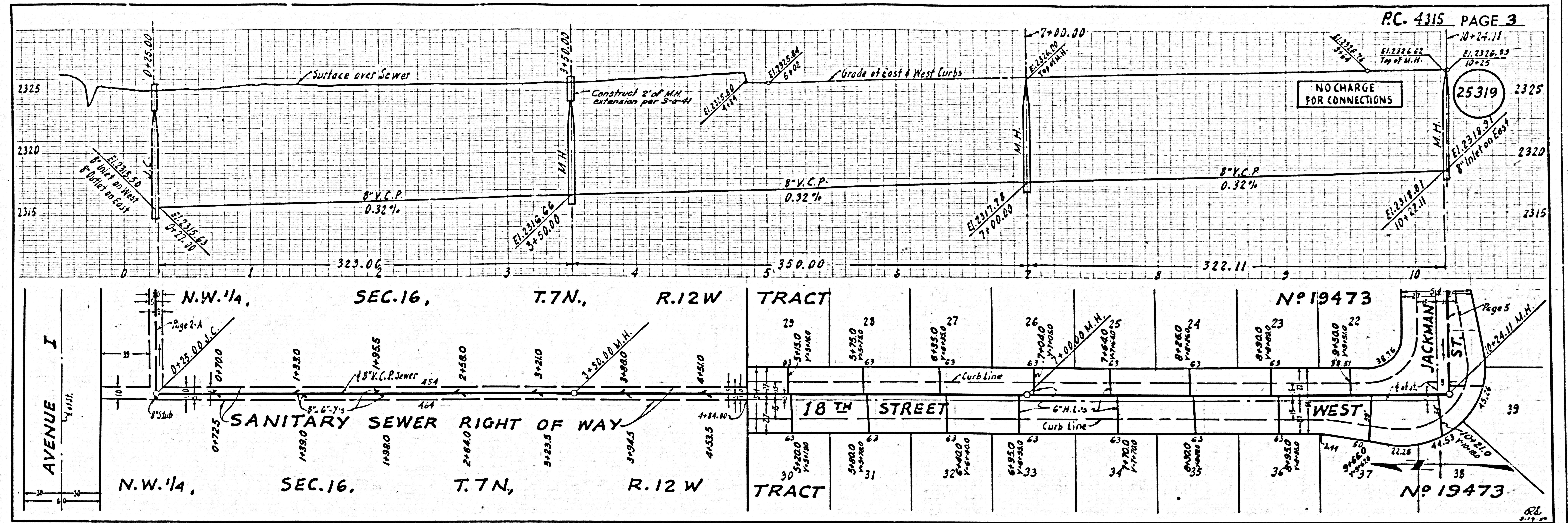
APPROVED, JOHN A. LAMBE, COUNTY ENGINEER
 APPROVED, A. M. RAWN, CHIEF ENGINEER

BY *A. J. Collins* SANITATION ENGINEER
 BY *A. M. Rawn* OFFICE ENGINEER

CHECKED BY *R. C. Wade* 3-11-57
 OFFICE OF COUNTY ENGINEER, BLDG. C. E. NO. 3466

Before breaking into any existing structure and before final acceptance of this work, County Sanitation District should be notified in order that required inspection may be made.

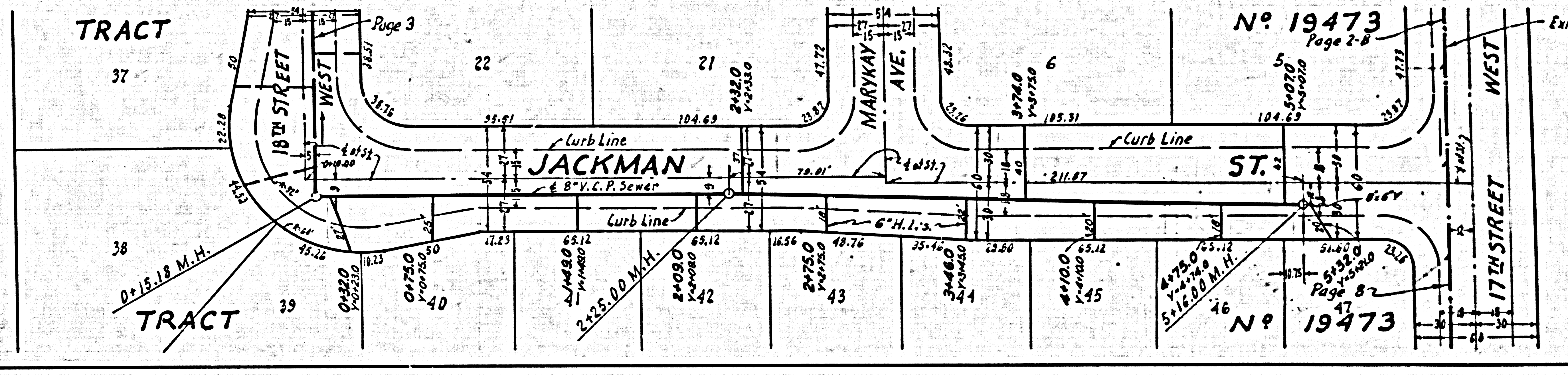
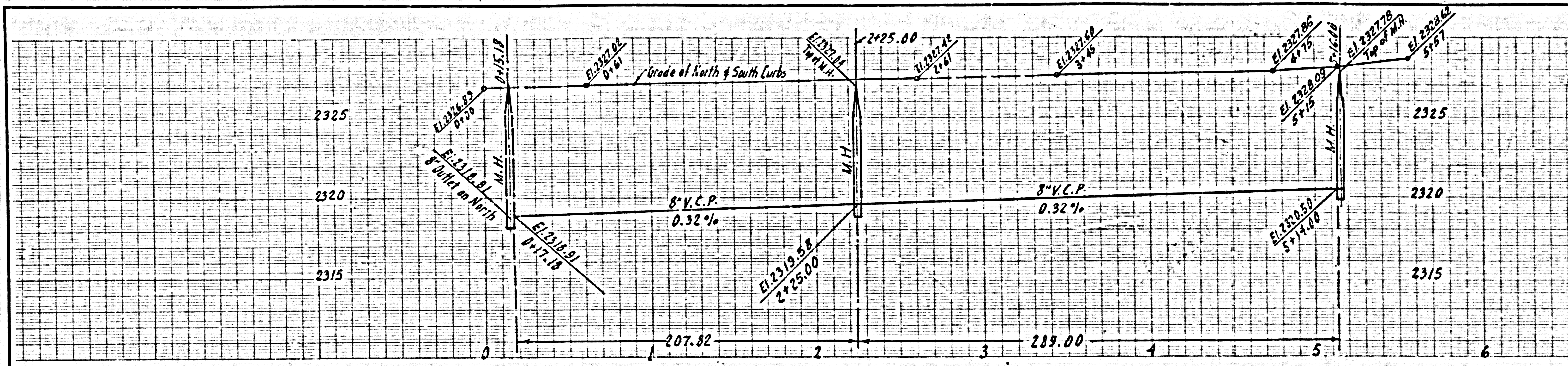




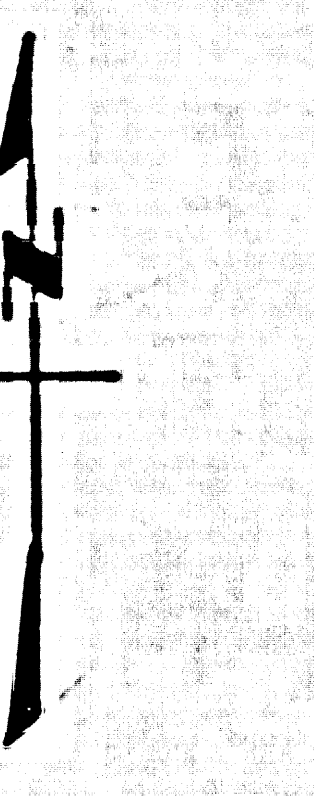
B.C. 4312

NO CHARGE FOR CONNECTIONS

25,321



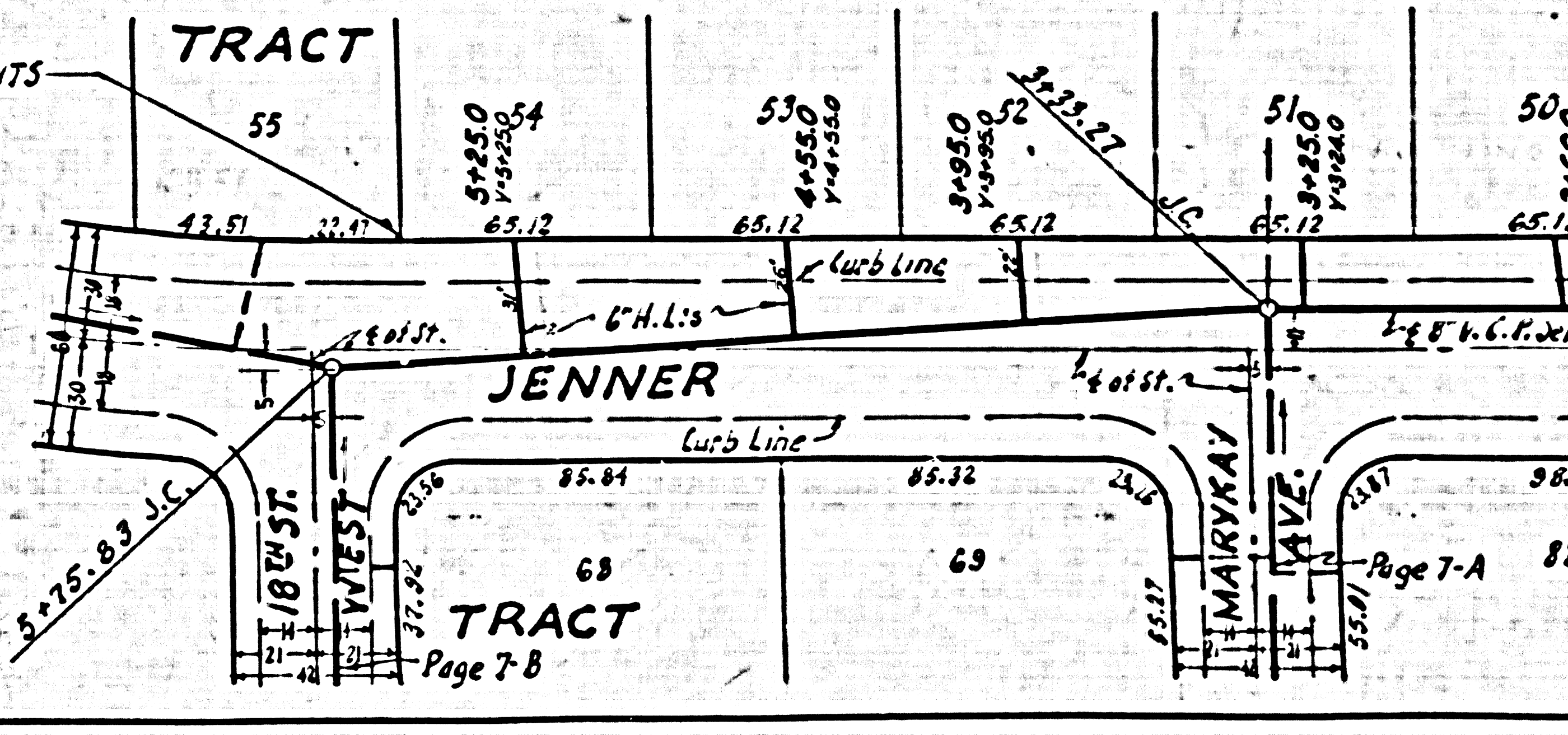
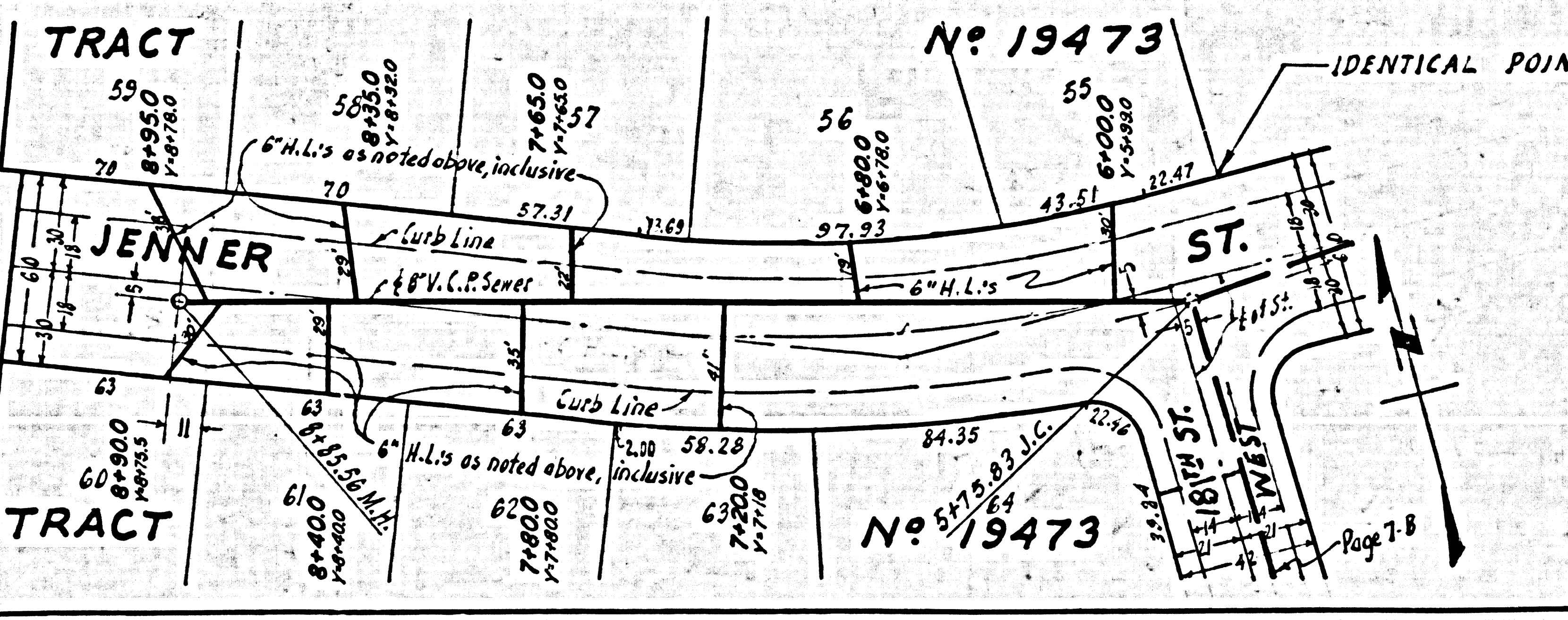
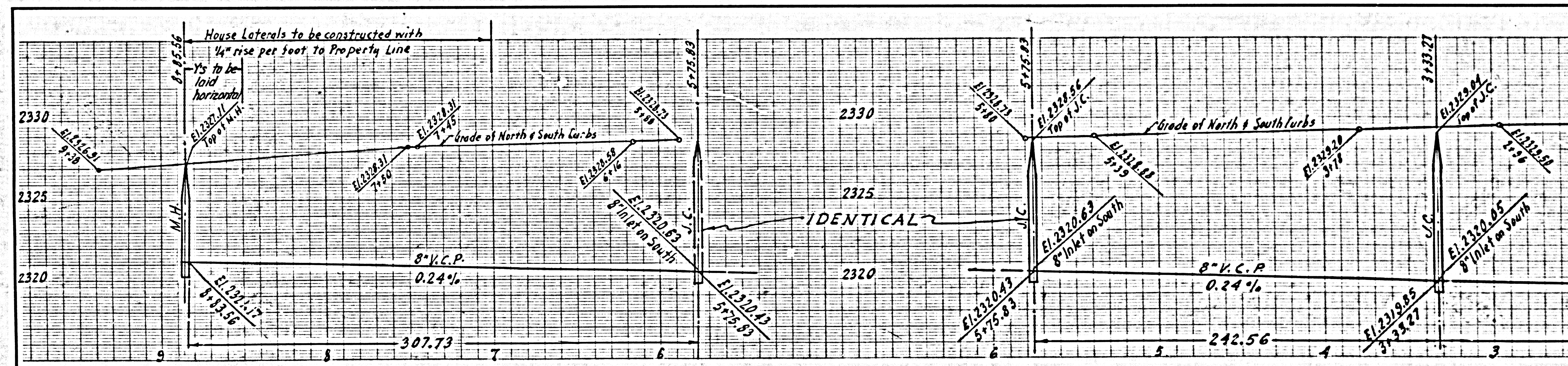
Existing 18" Con. Pipe WESTSIDE TRUNK SEW'R (#238)
San. Dist. #14



9-17-07

NO CHARGE FOR CONNECTIONS

25,322



EXTRA STRENGTH PIPE IN MAIN LINE AND HOUSE LATERALS

9-17-07

