

INDEX MAP
TRACT No 23690
P.C. 4316 Scale: 1" = 600'

O.M. No. 88-9 (S.B. 1859-18) Hacienda Blvd. 0.45 mile So. of Los Altos Dr., 1/4 & R.L. of the 7th curve So. of Los Altos Dr., 49' Ely from S of 1st 20.7' Wly from Pole #44189.6 a sht. C.S. Map in hand held stamped County Surveyor's Manual R.C. 8777' ELEV. 562.874 1954 Adj. Elev.

PUENTE BLDG. DIST. NO. 2

- NOTES
- PROFILES SHOWN ON THE PROPERTY LINE OR PROPERTY LINES PRODUCED AT RIGHT ANGLES TO THE SEWER LINE AT THE CENTER LINE OF EACH RAMPAGE.
 - NO REPRESENTATIVE OF THE COUNTY ENGINEER WILL SURVEY OR LAYOUT ANY PORTION OF THE WORK.
 - THE OWNER OR HIS AUTHORIZED REPRESENTATIVE SHALL FURNISH THE COUNTY ENGINEER WITH GRADE SHEETS AND STATION FOR ALL HOUSE LATERALS AND Y BRANCHES AND SHALL PROVIDE STAKES FOR THEM AT THEIR PROPER LOCATIONS WITH STATIONING PLAINLY MARKED AND CHANGE IN LOCATION SHALL BE REQUESTED BY WRITING TO THE COUNTY OR HIS REPRESENTATIVE.
 - NO DIVERSIONS SHALL BE MADE IN THEIR PLANS WITHOUT THE APPROVAL OF THE COUNTY ENGINEER.
 - USE STANDARD HANDBOOK FRAMES AND COVERS, S.A. 117, EXCEPT AS NOTED.
 - USE STANDARD STRENGTH PIPE EXCEPT AS NOTED.
 - USE CHAINED SURFACE GRADES, "SLOPE" GRADE" - EXCEPT FOR ALL V.C.P. PER S.A.C.'S SEC. 36 440.
 - RESURFACE ALL THINGS WITHIN PAVED AREA TO MEET S.A. COUNTY ROAD DEPT. OR CALIF. STATE HIGHWAY DEPT. STANDARDS IN ACCORDANCE WITH PERMITS.
 - SHOULDER FOUR FEET OF SEWER AT POINTS OF INTERFERENCE WITH POLES, S.A. 117.
 - HOUSE LATERALS TO BE CONSTRUCTED WITH INVERTS AT PROPERTY LINE - FIRST SHOW CURB GRADE EXCEPT AS NOTED.
 - ALL STRUCTURES SHALL BE BRICK SEWER STRUCTURES, S.A. 104, EXCEPT AS NOTED.
 - FOR ALLOWABLE WALLS TEST USE FORMULA NO. _____ SPEC'L. SEC. 34.
 - HANDRAILS FOR IN UNIMPROVED RIGHTS-OF-WAY TO BE 6" ABOVE FINISHED GRADE.
 - THE PRIVATE ENGINEER IS TO FURNISH THE HOUSE LATERAL DEPTH AT THE PROPERTY LINE BELOW THE TOP OF CURB ELEVATION FOR EACH HOUSE LATERAL ON THE GRADE SHEET.
 - THE CONTRACTOR SHALL VERIFY THE UTILITY CROSSINGS & VERIFY THE LOCATION OF ALL UTILITY LINES BEFORE STRUCTURE CONSTRUCTION.

NOTE
THE CONTRACTOR SHALL NOTIFY THE CONSTRUCTION AND STORM DRAIN DIVISION BY TELEPHONE, MADISON 9-4747, EXT. 367, AT LEAST 24 HOURS BEFORE STARTING ANY WORK UNDER THIS CONTRACT.

COLLECT CHARGES AS INDICATED
Julius 8-7-58

PROFILE ALIGNMENT AND GRADE OF **P.C. 4316**
SANITARY SEWERS PAGE 1
TO BE CONSTRUCTED IN

TRACT No 23690
PRIVATE CONTRACT NO. 4316

W.S. 38
8 SHEETS, 10 PAGES
SCALE: VERT. 1" = 4'
HORIZ. 1" = 40'
MAY, 1957
PREPARED IN THE OFFICES OF
KEMMERER ENGR. CO. INC.

John C. Kemmerer
REG. C. E. NO. 8244

FOR LEGEND SEE PLAN NO. S.A. 64

NOTES

GRADES TO WHICH THIS IMPROVEMENT IS TO BE CONSTRUCTED ARE SHOWN ON PLANS AND PROFILES. GRADE POINTS FOR TOP OF CURB, CENTER LINE OF SIDEWALKS, CENTER LINE OF ALLEYS ARE SHOWN BY CHAINS ON PROFILES. AT ALL POINTS BETWEEN DESIGNATED POINTS THE GRADE SHALL BE ESTABLISHED SO AS TO CONFORM TO A STRAIGHT LINE DRAWN BETWEEN SAID DESIGNATED POINTS.

ELEVATIONS ARE IN FEET ABOVE U.S.C. & G.S. MEAN SEA LEVEL. BATTERY OF 2222.

THE DRAWING AND THE DATA HEREON ARE HEREBY MADE A PART OF THE SPECIFICATIONS.

WORK SHALL BE CONSTRUCTED ACCORDING TO SPECIFICATIONS ON FILE IN THE OFFICE OF THE COUNTY ENGINEER AND SHALL BE PROSECUTED ONLY IN THE PRESENCE OF THE COUNTY ENGINEER.

BEFORE WORK CAN BE STARTED, THE CONTRACTOR MUST OBTAIN A PERMIT TO EXCAVATE IN COUNTY STREETS FROM THE L.A. COUNTY ROAD DEPT., STAFF ROOM 7, AND MAKE A REPORT WITH THE COUNTY ENGINEER, ROOM 124 PARK AVENUE, HEALING HILLS 30. BROADWAY IMPROVEMENT TO COVER THE COST OF CONSTRUCTION INSPECTION AND RECORD PLANS.

THE CONTRACTOR SHALL BE RESPONSIBLE FOR THE ACCURACY OF THE LOCATION OF ALL UTILITIES AND SHALL VERIFY THE LOCATION OF ALL UTILITY LINES, OR STRUCTURE WITHIN THE LIMITS OF THE PROJECT THIS NOTE APPLIES TO ALL PAGES.

IF WORK IS TO BE DONE ON A STATE HIGHWAY, A PERMIT MUST BE OBTAINED FROM THE STATE OF CALIFORNIA, DIVISION OF HIGHWAYS, 120 SOUTH SPRING STREET.

COUNTY OF LOS ANGELES, CALIFORNIA

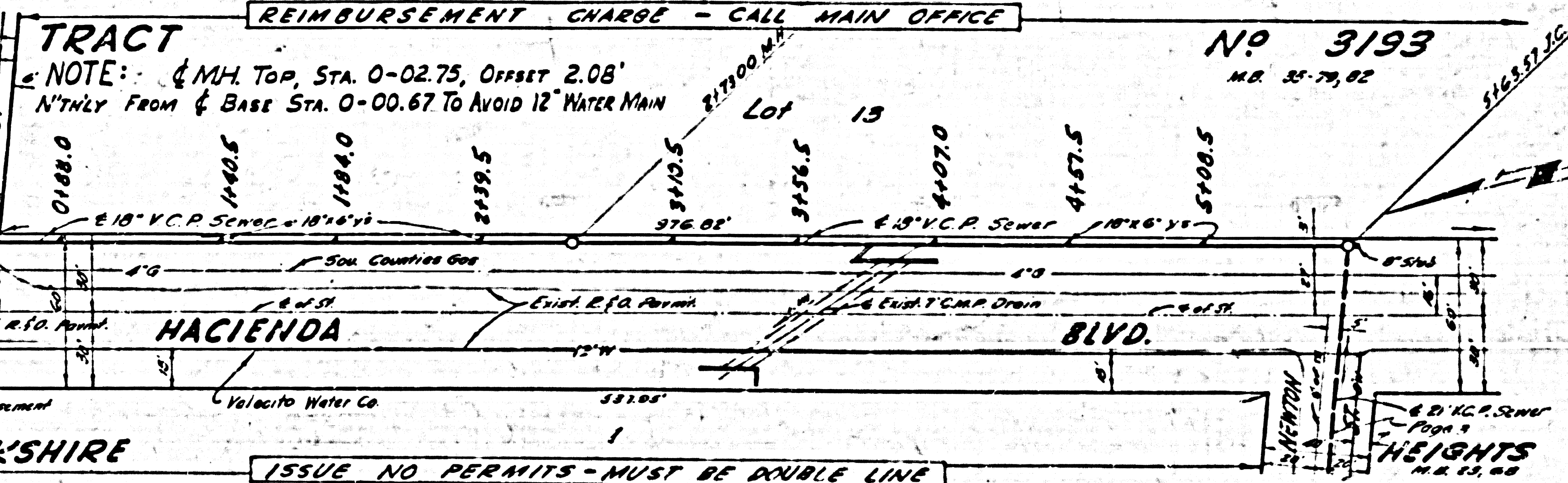
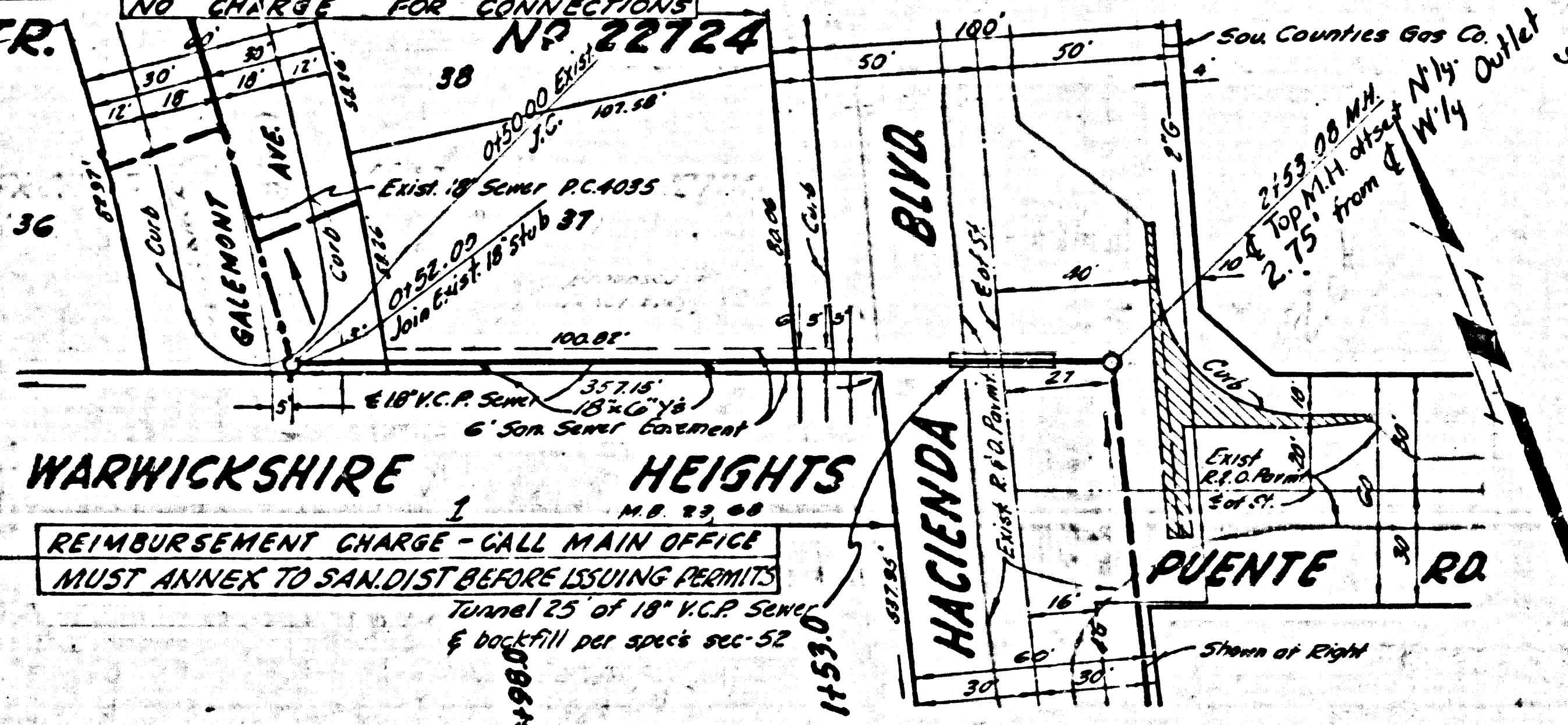
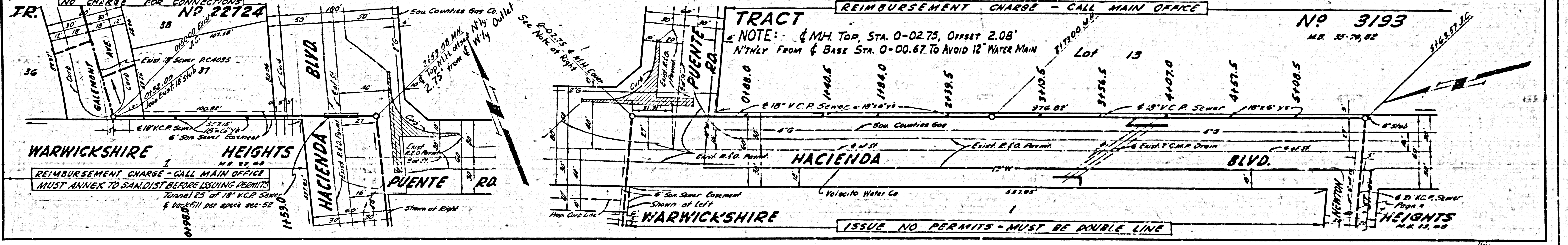
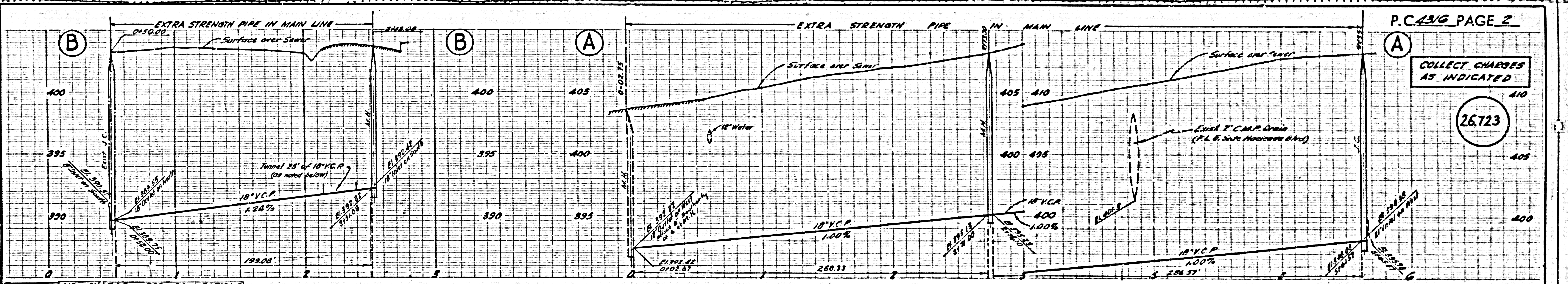
APPROVED, JOHN A. LA'NBE, COUNTY ENGINEER

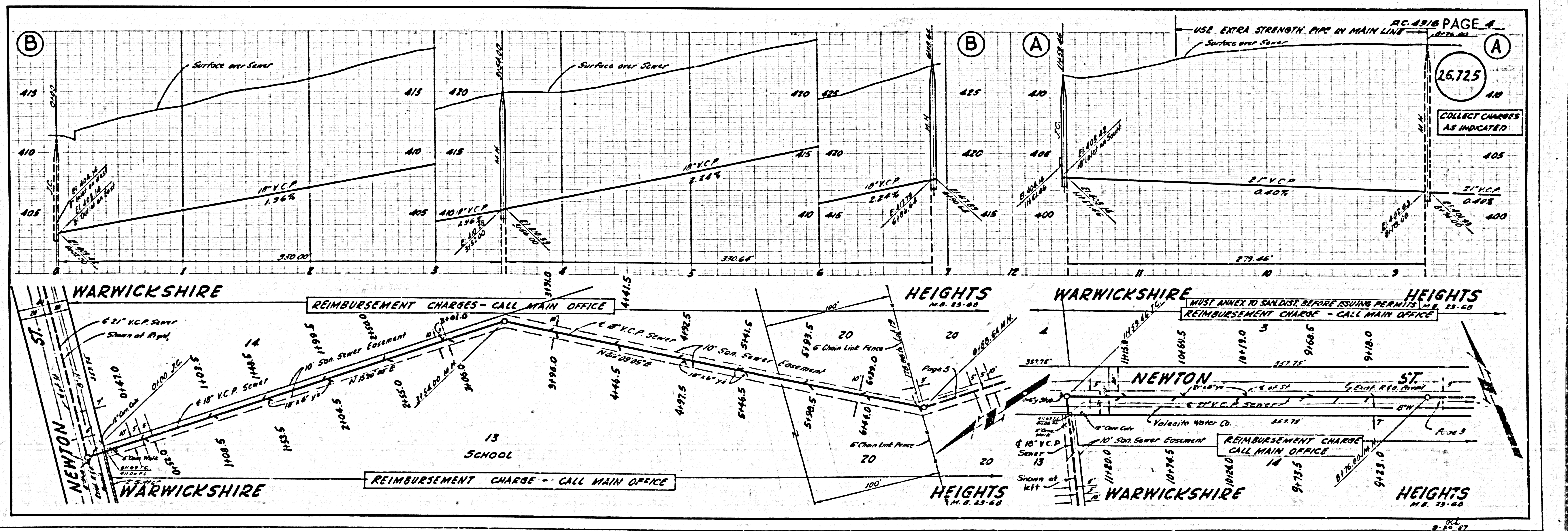
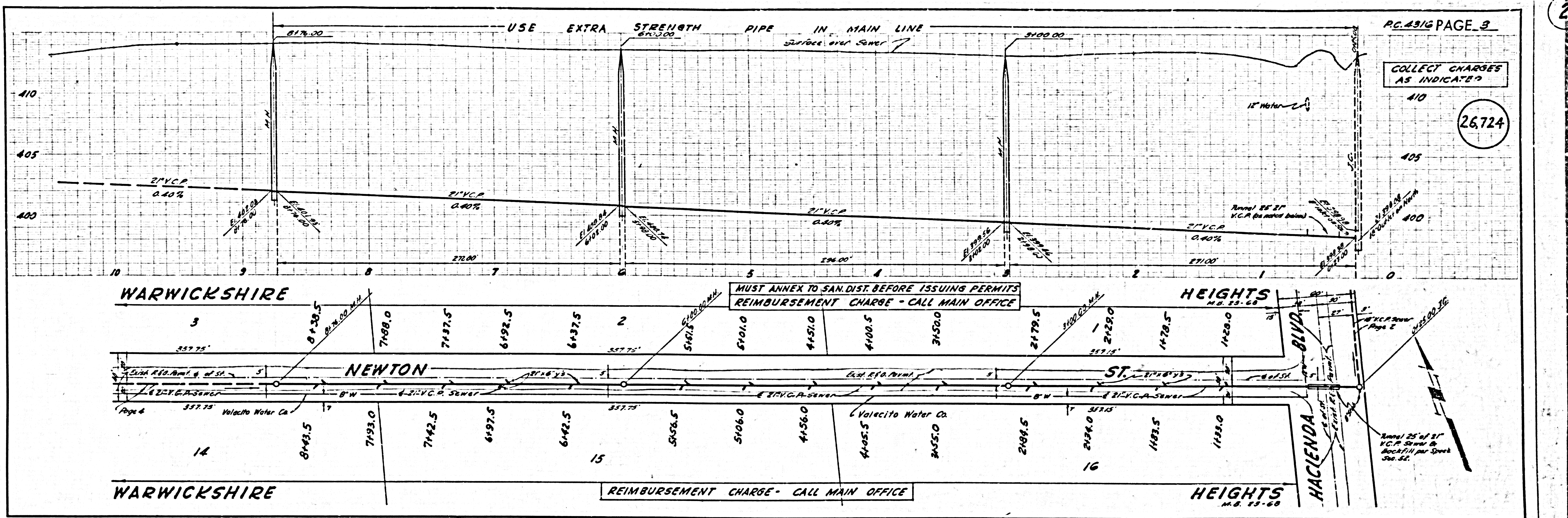
APPROVED, A. M. BAWN, CHIEF ENGINEER

BY *J. H. Hughes* MANAGER

CHECKED BY *R. C. Onda* 9-13-58

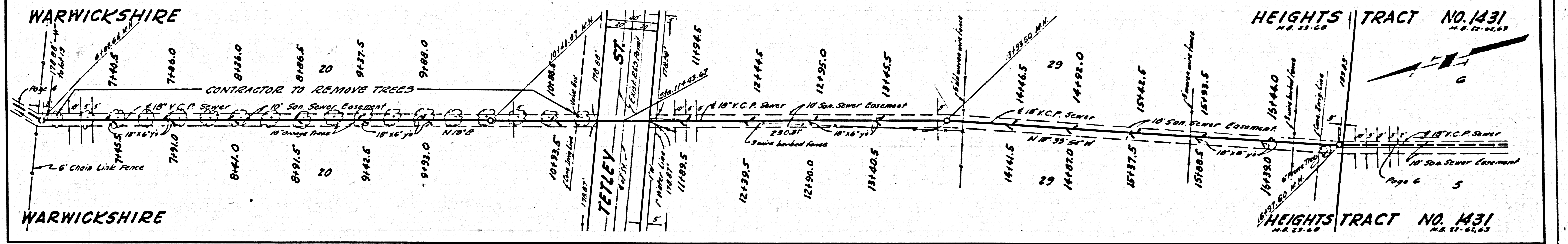
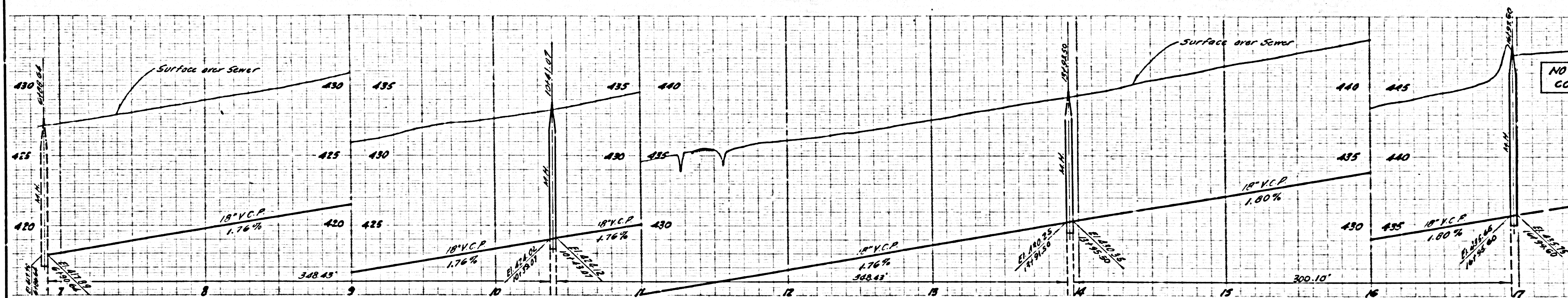
OFFICE OF COUNTY ENGINEER, REG. C. E. NO. 9454





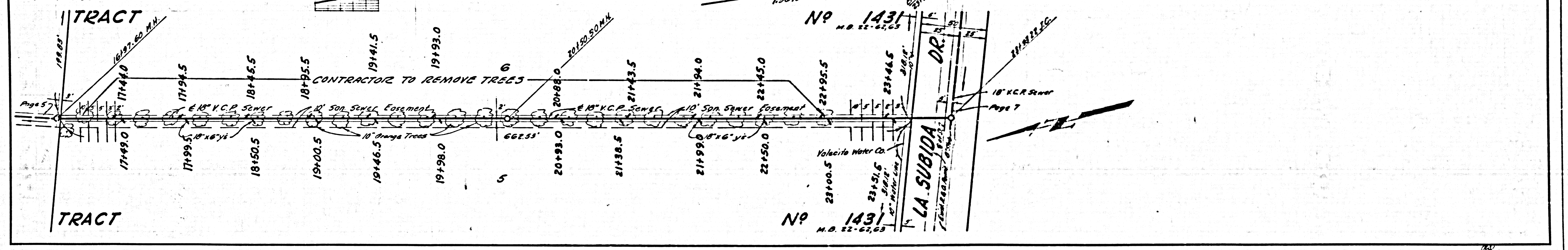
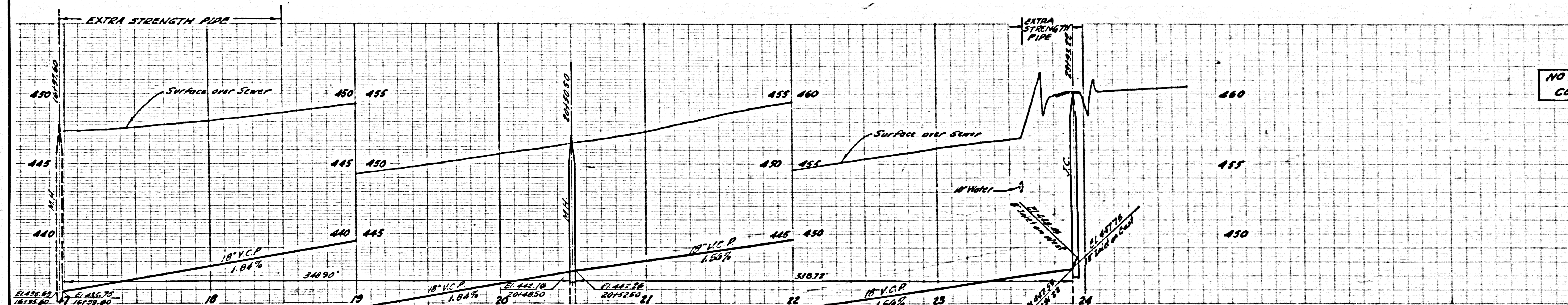
26,726

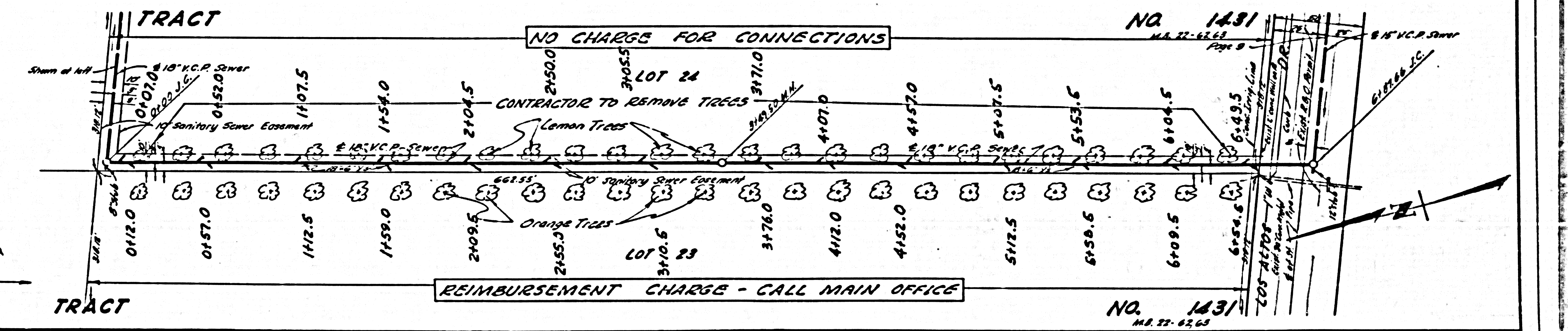
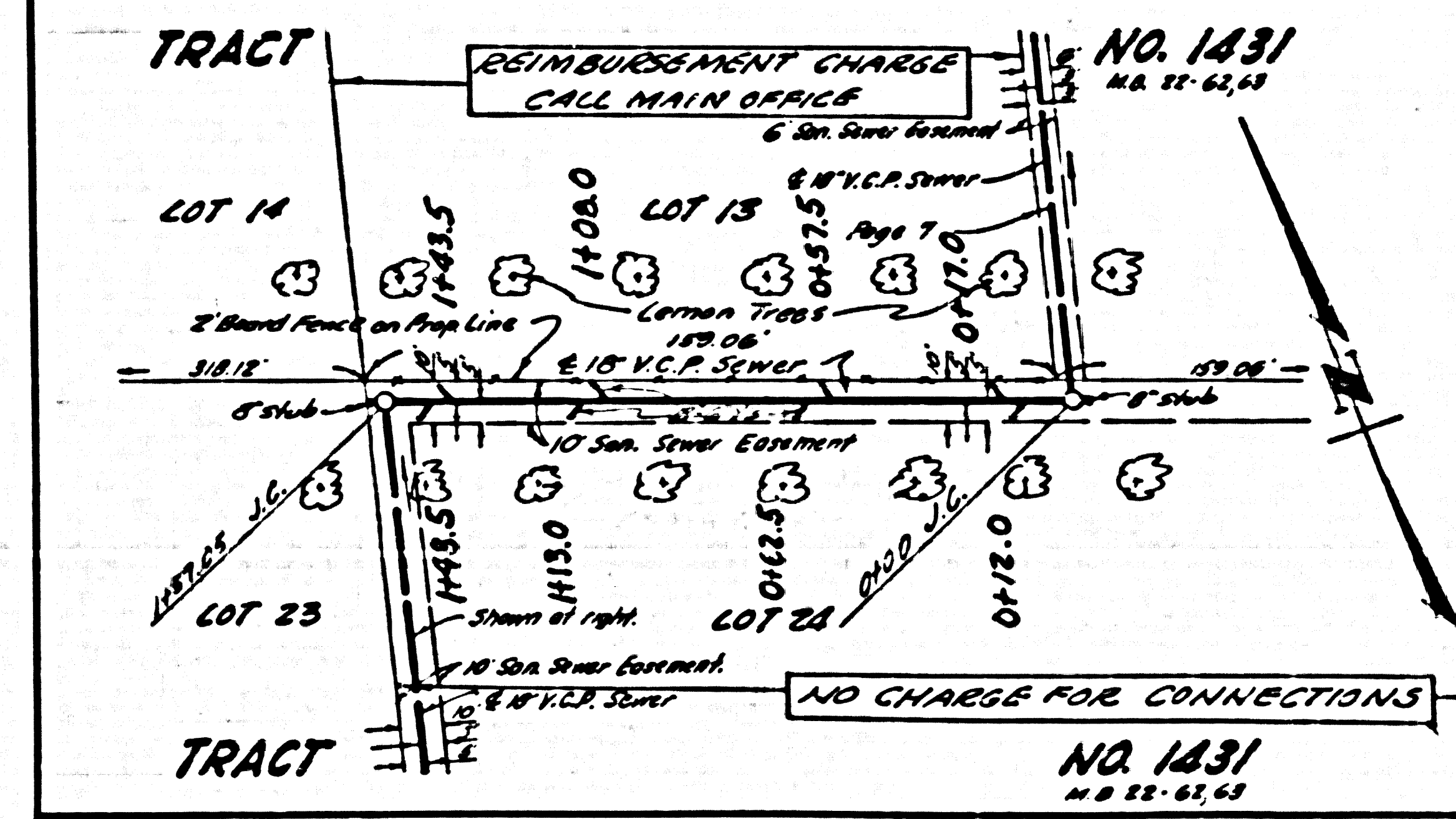
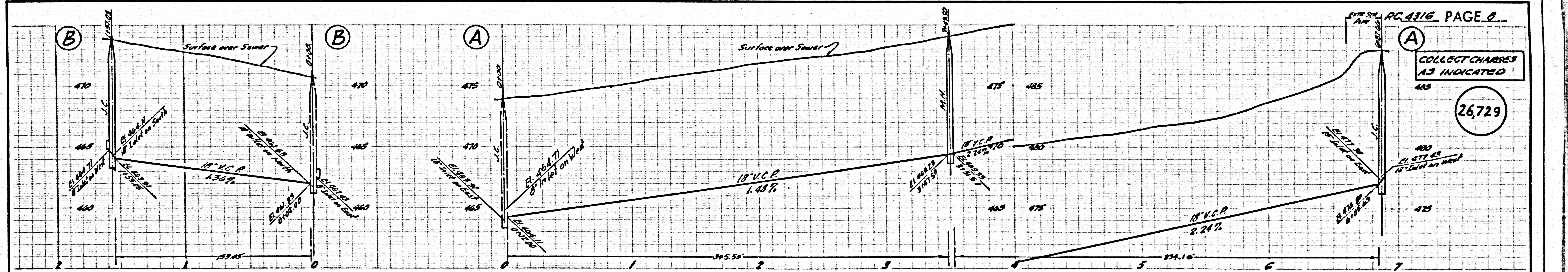
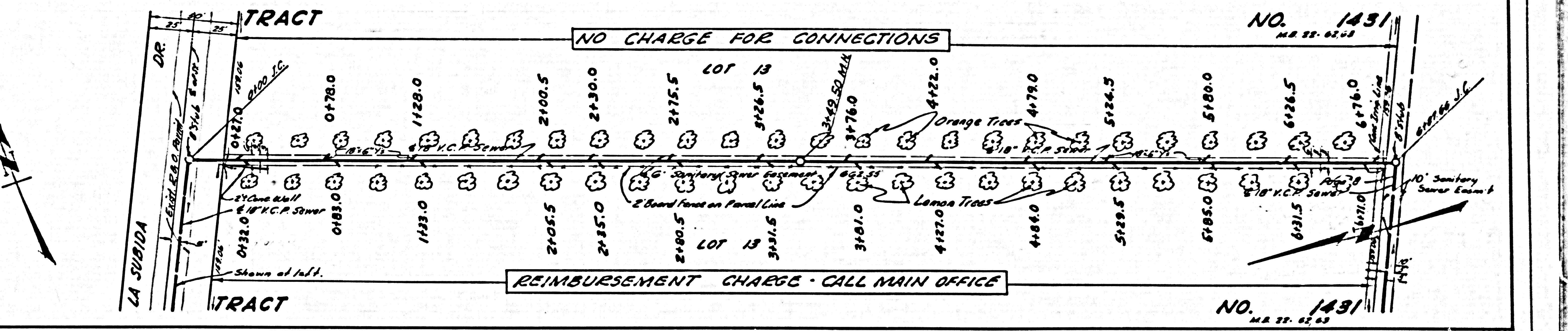
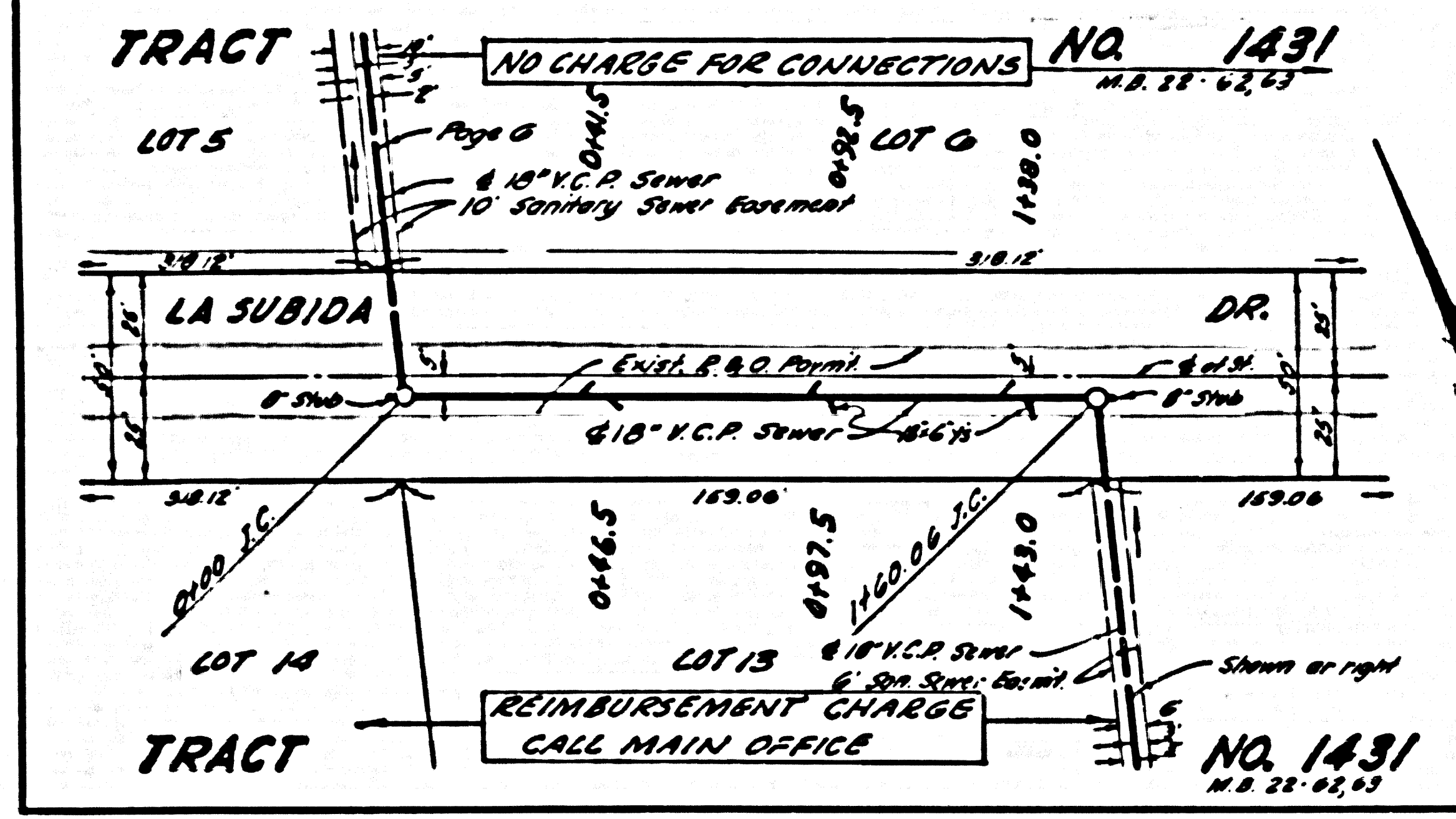
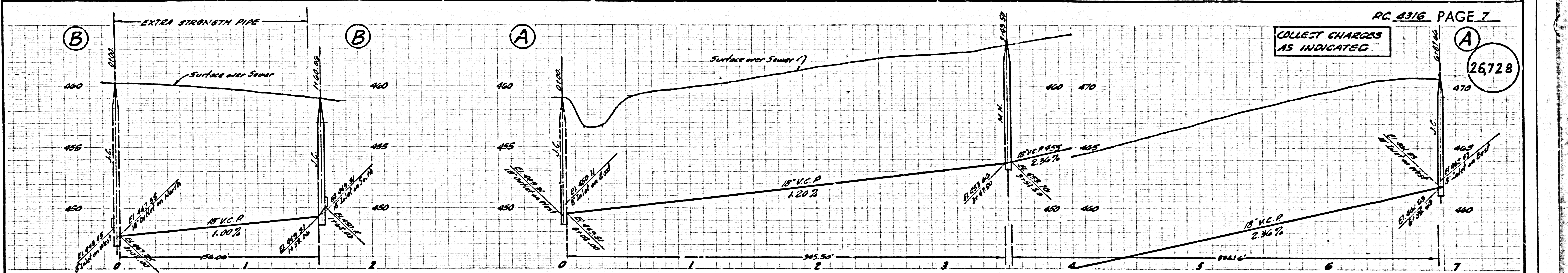
NO CHARGE FOR CONNECTIONS



26,727

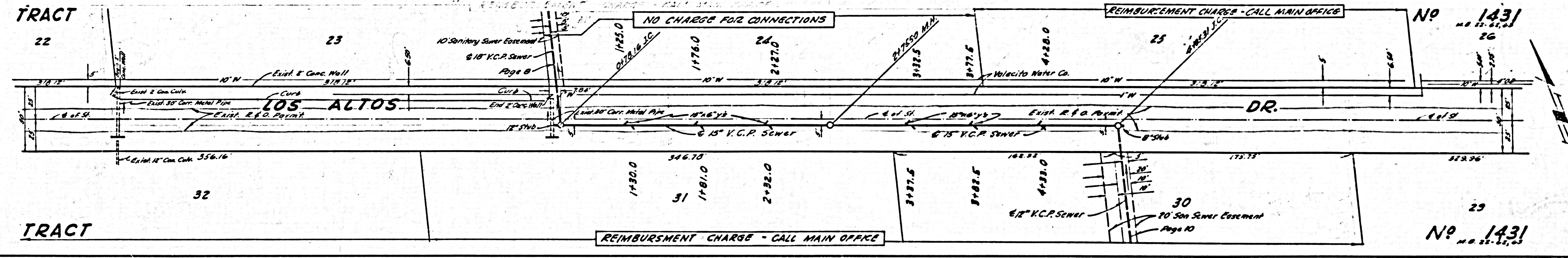
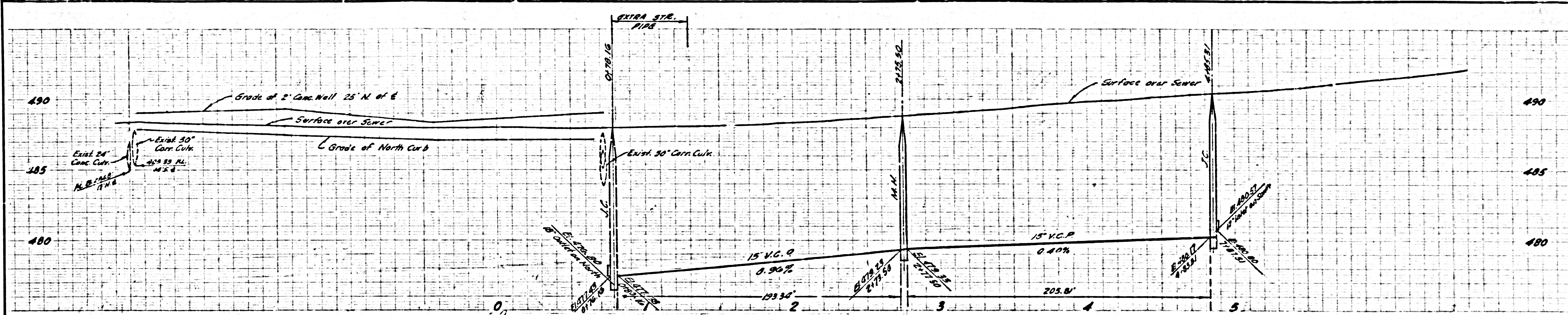
NO CHARGE FOR CONNECTIONS





COLLECT CHARGES AS INDICATED

26,730



NO CHARGE FOR CONNECTIONS

REIMBURSEMENT CHARGE - CALL MAIN OFFICE

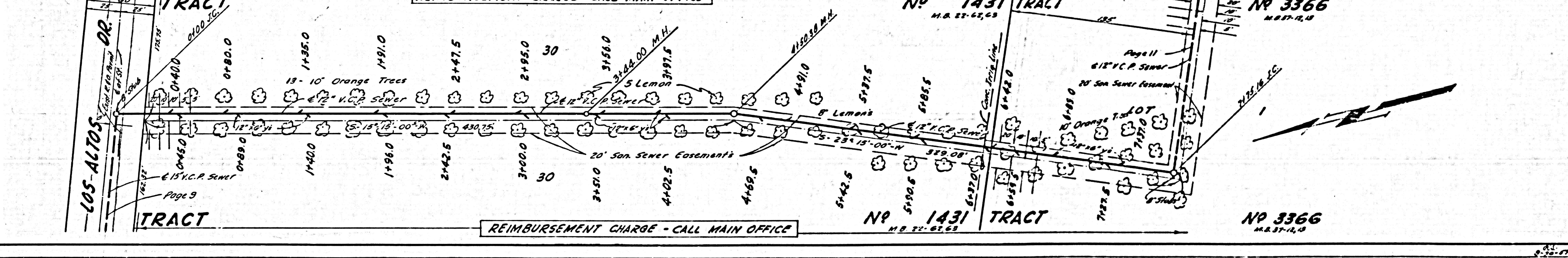
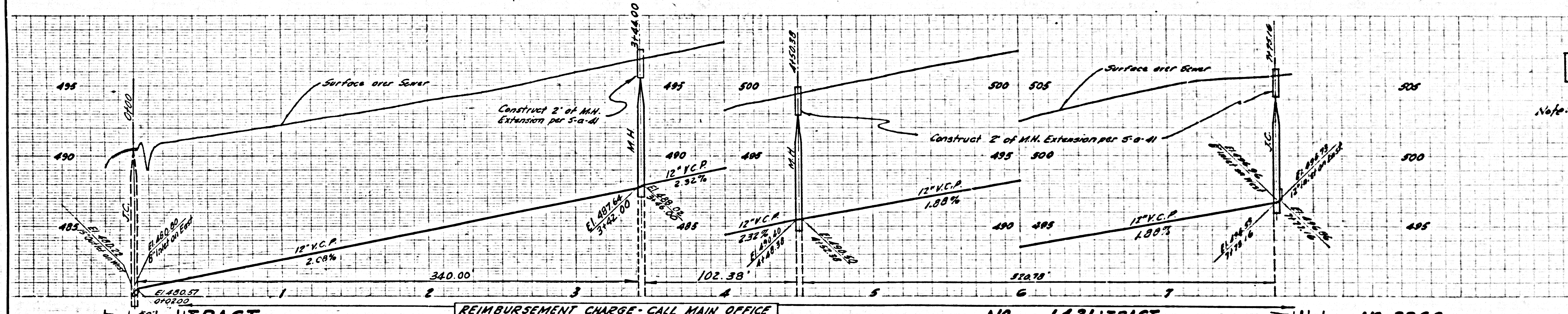
REIMBURSEMENT CHARGE - CALL MAIN OFFICE

NO 1431

COLLECT CHARGES AS INDICATED

26,731

Note: Contractor to Remove Trees as necessary



REIMBURSEMENT CHARGE - CALL MAIN OFFICE

NO 1431 TRACT

NO 3366

REIMBURSEMENT CHARGE - CALL MAIN OFFICE

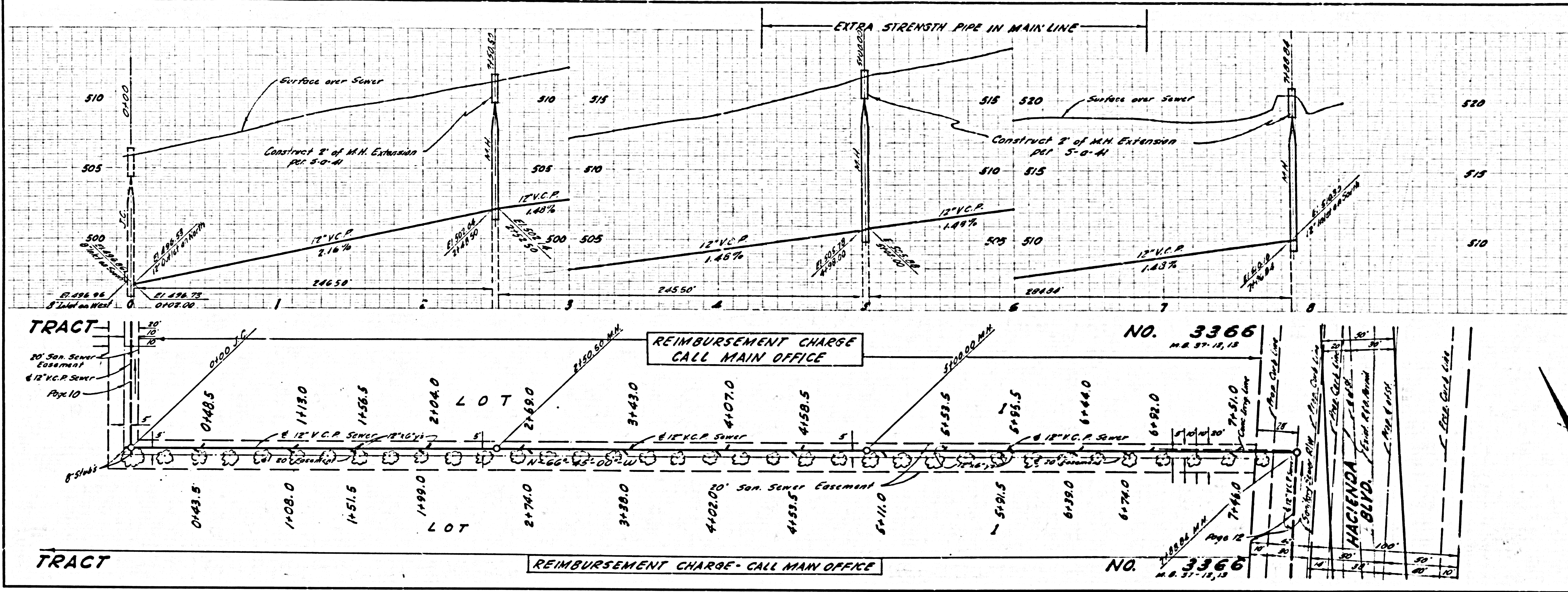
NO 1431 TRACT

NO 3366

PC 4316 ISACT NO 53030

COLLECT CHARGES AS INDICATED

26,732

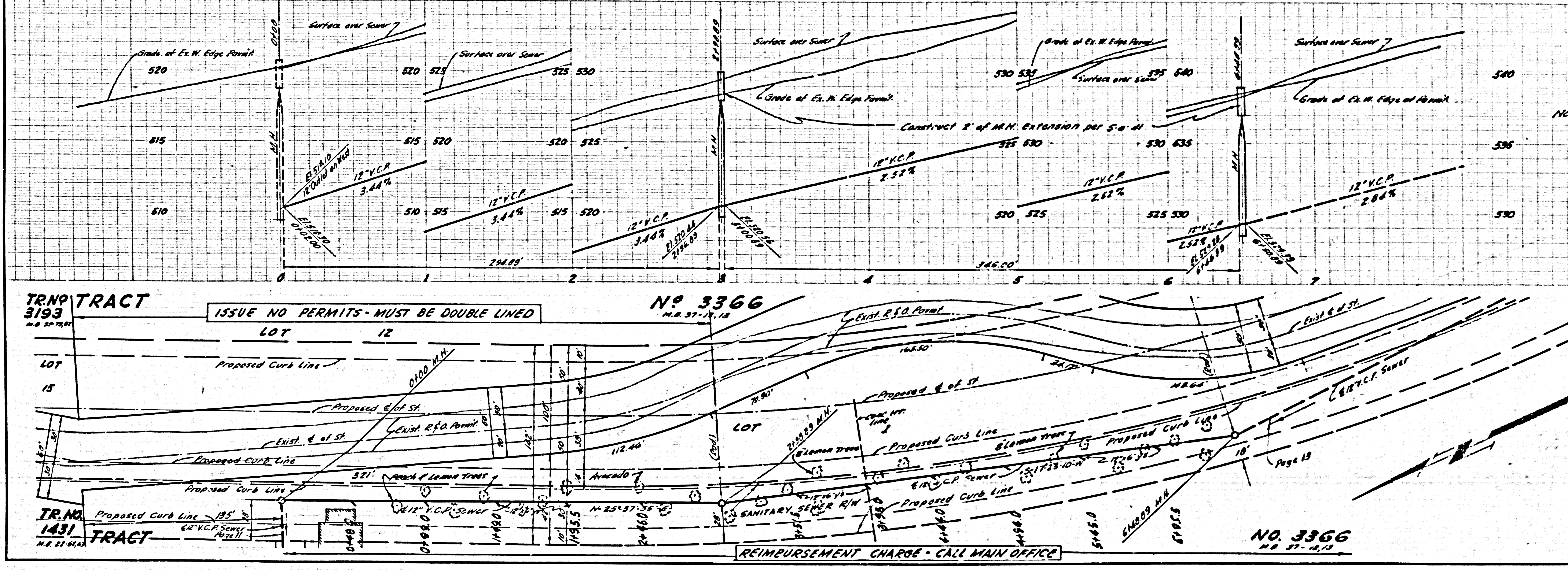


8-15-57

COLLECT CHARGES AS INDICATED

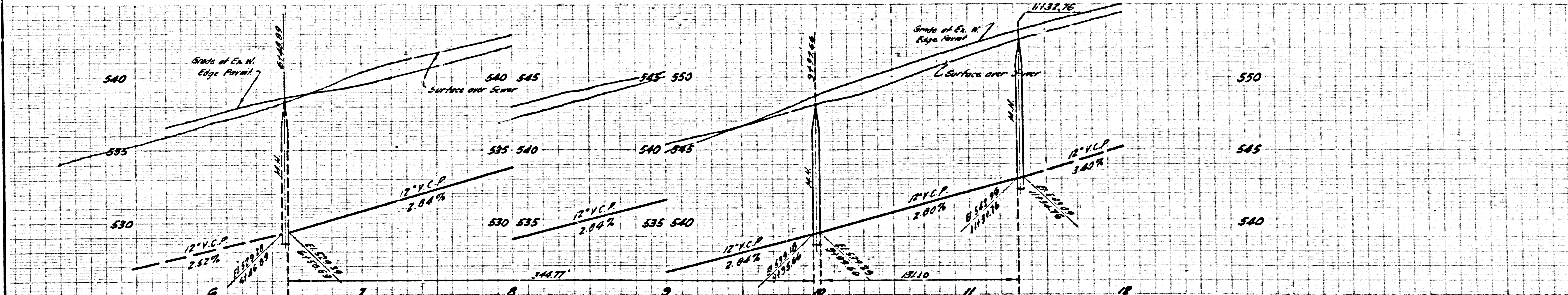
26,733

NOTE: CONTRACTOR TO REMOVE TREES AS NECESSARY.



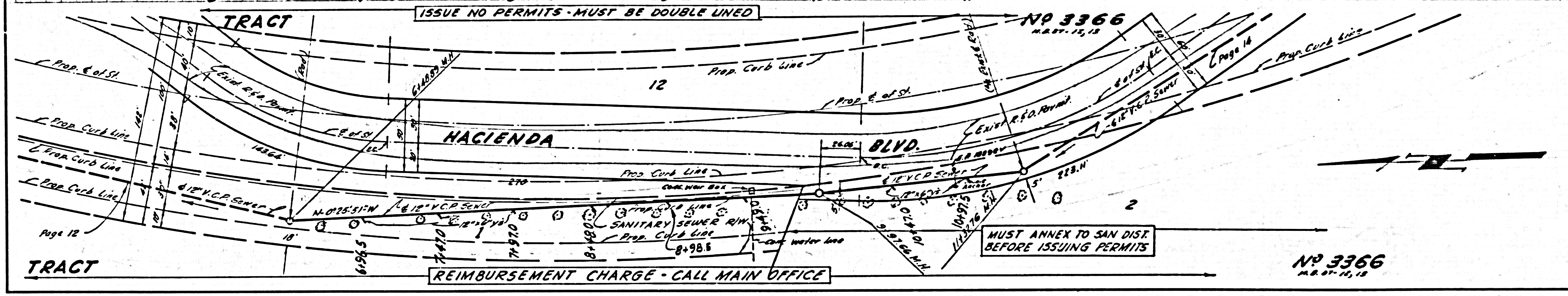
8-15-57

U.S. GEO. SURV. CO. BLUE PRINT SHOP NO. 1



COLLECT CHARGES AS INDICATED

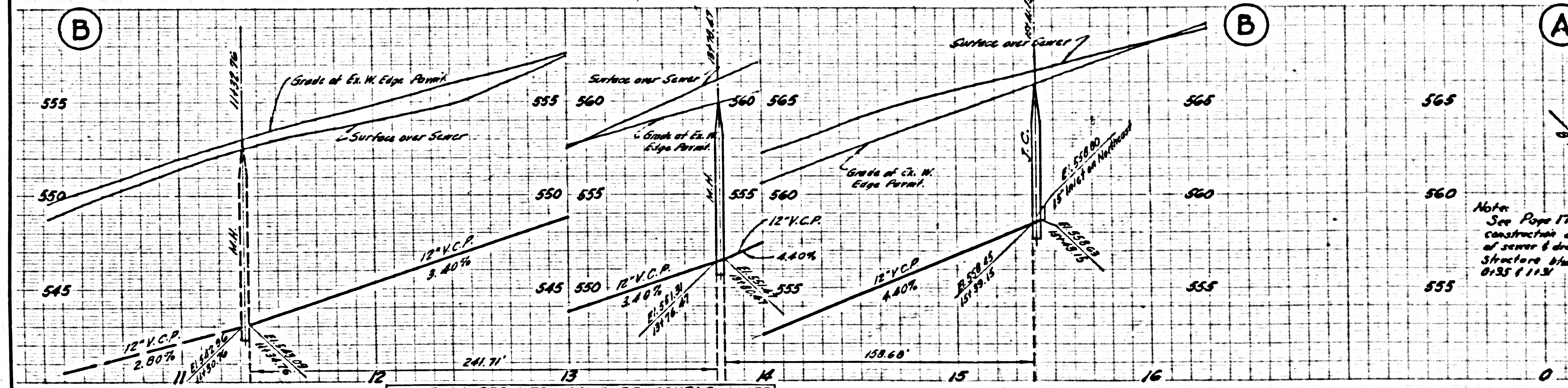
26,734



MUST ANNEX TO SAN DIST. BEFORE ISSUING PERMITS

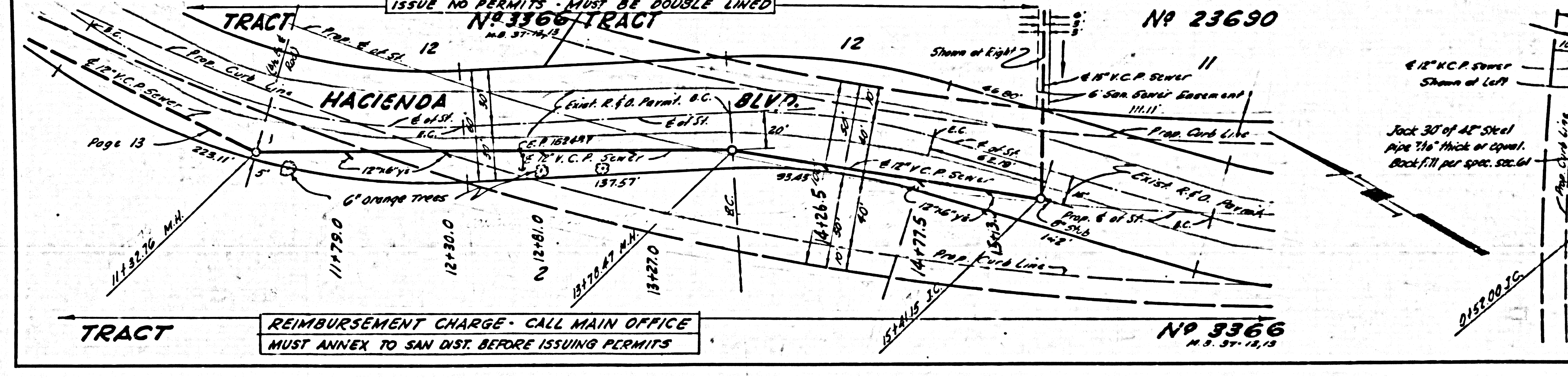
NO 3366
M.B. 07.15.18

8-27-17



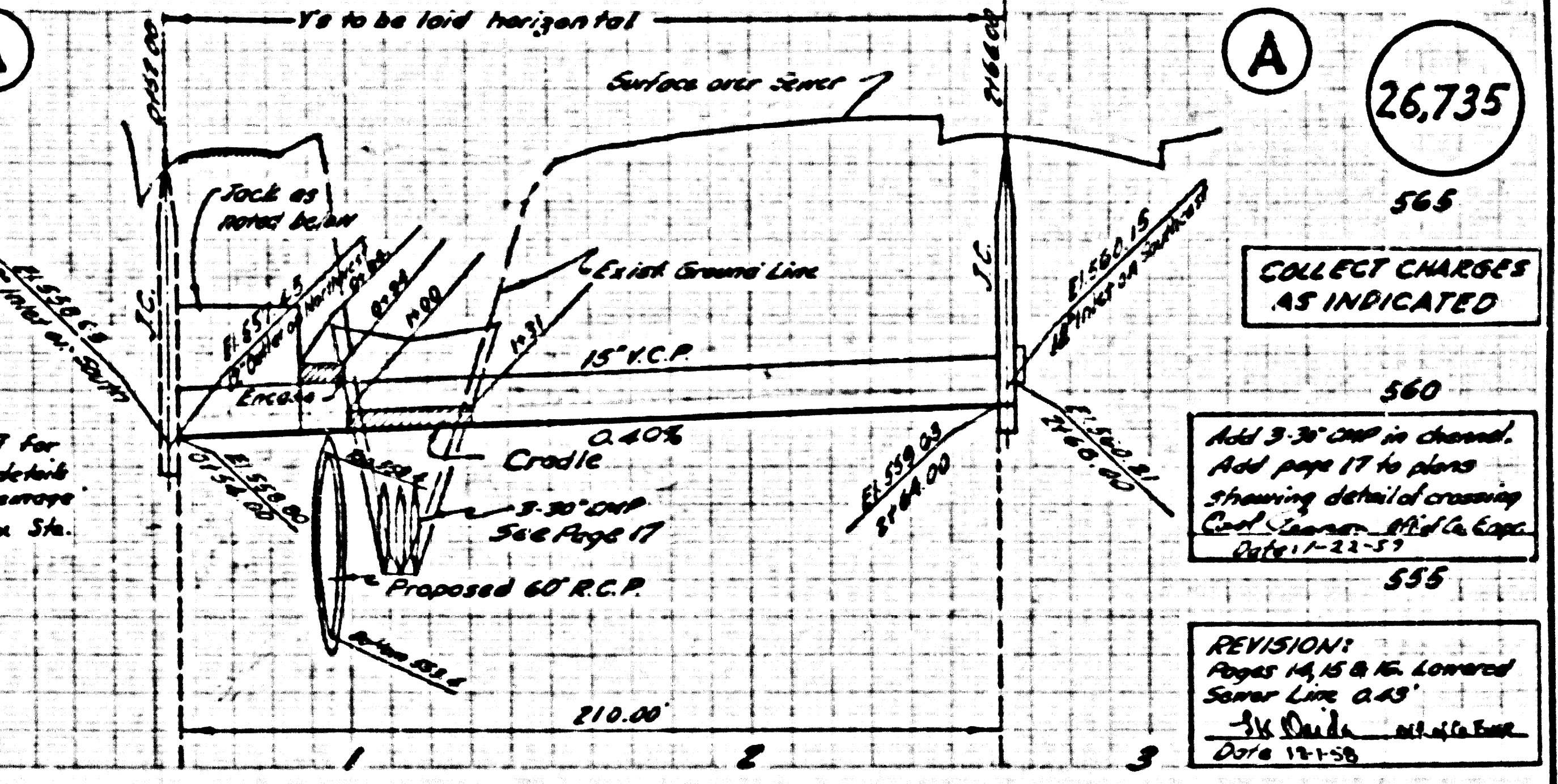
COLLECT CHARGES AS INDICATED

26,735



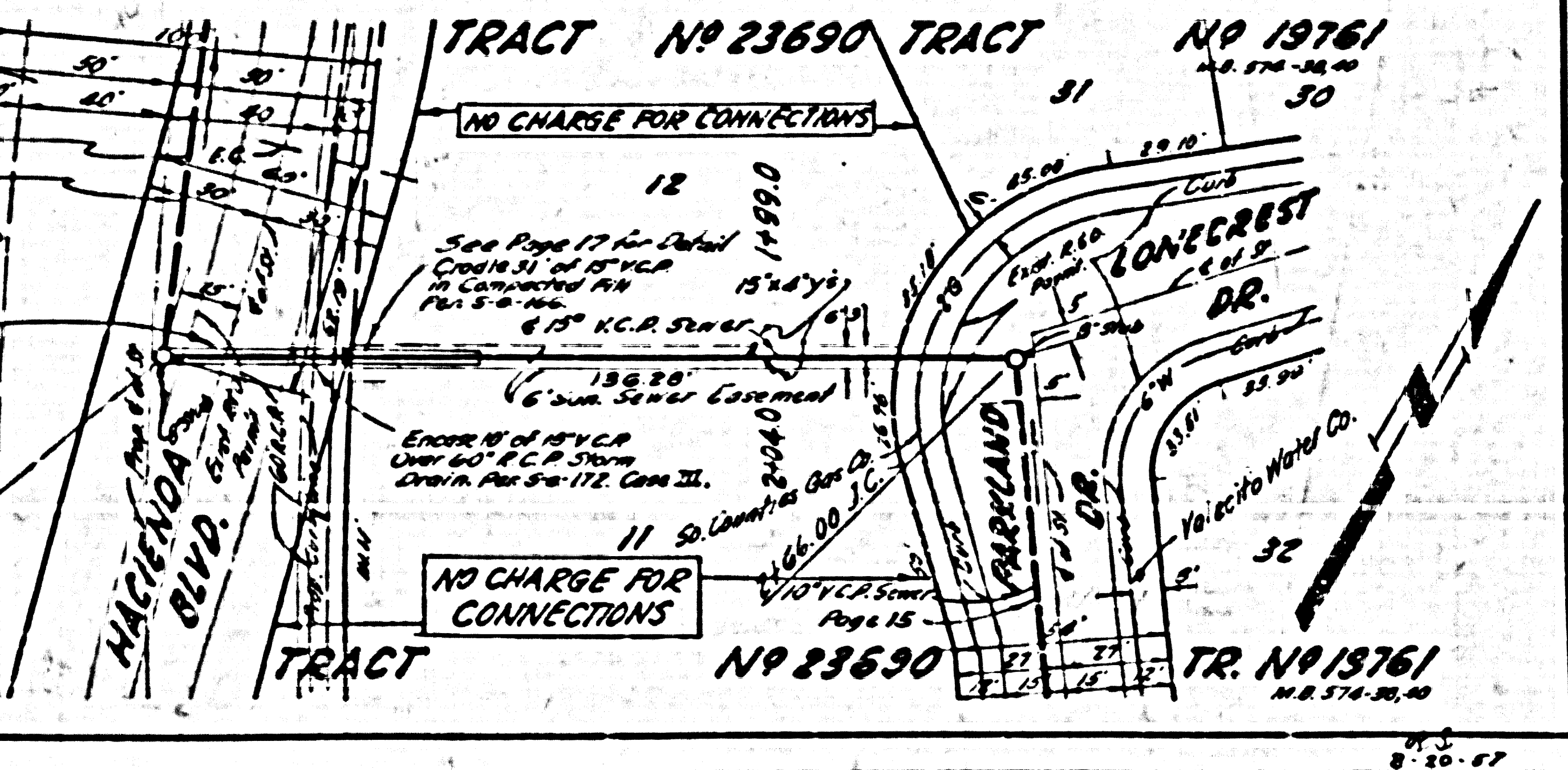
REIMBURSEMENT CHARGE - CALL MAIN OFFICE
MUST ANNEX TO SAN DIST. BEFORE ISSUING PERMITS

NO 23690
M.B. 07.14.18



Note:
See Page 17 for construction details of sewer & drainage structure at Sta. 0+55.11 & 0+55.115

REVISION:
Pages 13, 14 & 15. Lowered Sewer Line 0.45'
- 3/4\"/>



NO CHARGE FOR CONNECTIONS

NO 19761
M.B. 07.14.18

8-27-17

