

LENNOX BLDG. DIST. NO. 7

PROFILE ALIGNMENT AND GRADE OF P.C. 4320
 SANITARY SEWERS PAGE 1
 TO BE CONSTRUCTED IN
 TRACT No. 18854

PRIVATE CONTRACT NO. 4320

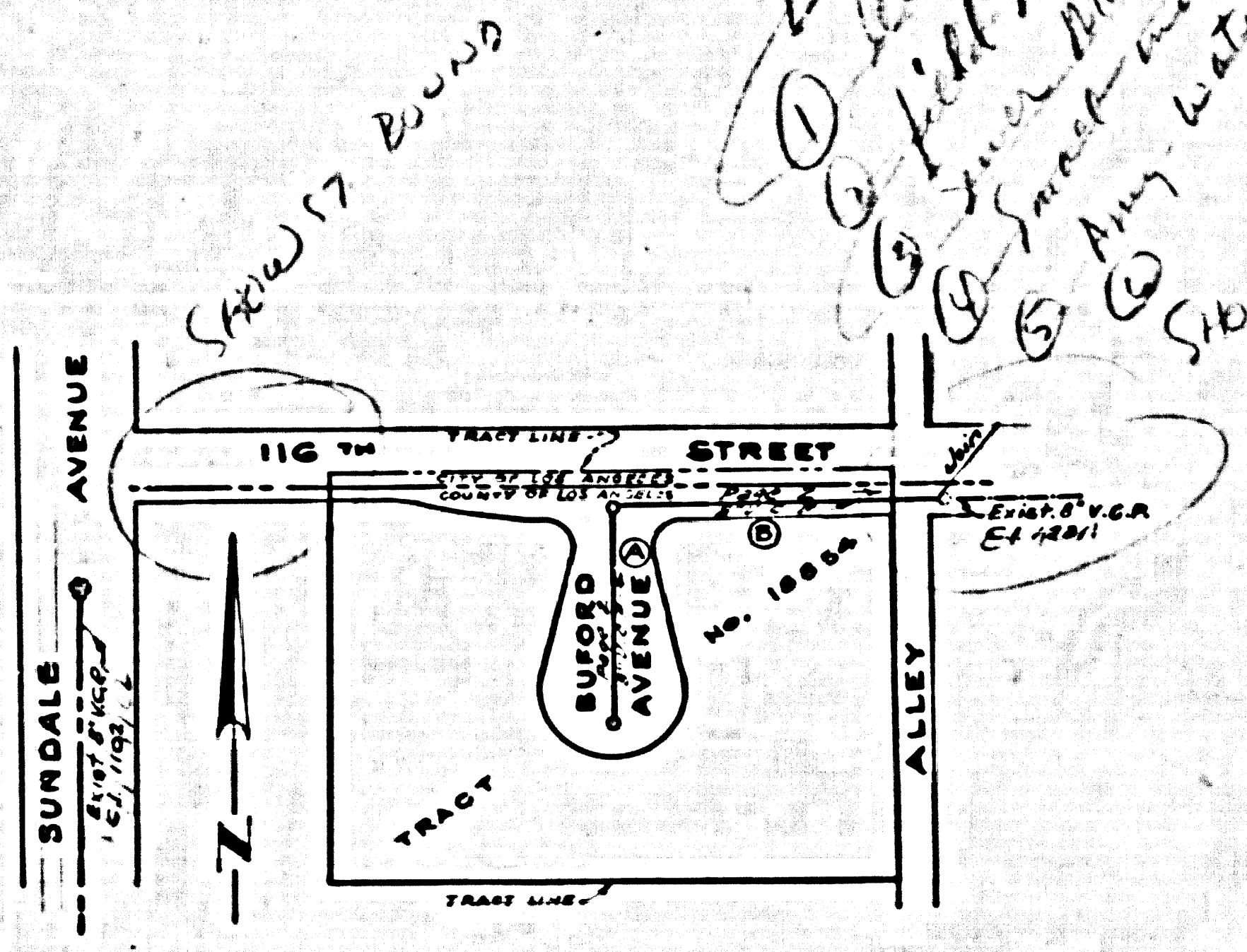
W.S. 25 ✓
 1 SHEET, 2 PAGES

SCALE: HORIZ. 1" = 20' VERT. 1" = 2' FEBRUARY 27, 1957

PREPARED IN THE OFFICES OF
BARCLAY ENGINEERING CO., INC.
 BY Edward J. Barclay
 REG. C. E. NO. 8782

FOR LEGEND SEE PLAN No. S-A-64

- NOTES:
1. PROPERTY STAKES ON THE PROPERTY LINE OR PROPERTY LINES PRODUCED AT RIGHT ANGLES TO THE LEVEL LINE AT THE CENTER LINE OF EACH MANHOLE.
 2. NO REPRESENTATIVE OF THE COUNTY ENGINEER WILL SURVEY OR LAYOUT ANY PORTION OF THE WORK.
 3. THE OWNER OR HIS AUTHORIZED REPRESENTATIVE SHALL FURNISH THE COUNTY ENGINEER WITH GRADE SHEETS AND STATION FOR ALL HOUSE LATERALS AND V-BRANCHES AND SHALL PROVIDE STAKES FOR THEM AT THEIR PROPER LOCATIONS WITH STATIONING PLAINLY MARKED. ANY CHANGE IN LOCATION SHALL BE REQUESTED IN WRITING BY THE OWNER OR HIS REPRESENTATIVE.
 4. NO REVISIONS SHALL BE MADE IN THESE PLANS WITHOUT THE APPROVAL OF THE COUNTY ENGINEER.
 5. USE STANDARD MANHOLE FRAMES AND COVERS, S.A.-117, EXCEPT AS NOTED.
 6. USE STANDARD STRENGTH PIPE EXCEPT AS NOTED.
 7. USE CEMENT MORTAR FOR ALL WITHEED CLAY PIPE JOINTS.
 8. INSURFACE ALL TRENCH WITHIN PAVED AREA TO MEET L. & COUNTY ROAD DEPT. OR CALIF. STATE HIGHWAY DEPT. REQUIREMENTS IN ACCORDANCE WITH PERMITS.
 9. INCASE FOUR FEET OF SEWER AT POINTS OF INTERFERENCE WITH POLES, S.A.-119.
 10. HOUSE LATERALS TO BE CONSTRUCTED WITH INVERTS AT PROPERTY LINE. JUST SHOW CURB GRADE EXCEPT AS NOTED.
 11. ALL STRUCTURES SHALL BE BRICK SEWER STRUCTURES, S.A.-184, EXCEPT AS NOTED.
 12. FOR ALLOWABLE LEAKAGE TEST USE FORMULA NO. 1 S.P.C.S., SEC. 24 ✓
 13. MANHOLE TOPS IN UNIMPROVED RIGHTS-OF-WAY TO BE 6" ABOVE FINISHED GRADE.
 14. THE INDICATION OR OMISSION OF EXISTING SUBSTRUCTURES SHALL IN NO WAY RELIEVE THE CONTRACTOR FROM THE RESPONSIBILITY OF VERIFYING AND LOCATING SUBSTRUCTURES.
 15. THE PRIVATE ENGINEER IS TO FURNISH THE HOUSE LATERAL DEPTH AT THE PROPERTY LINE BELOW THE TOP OF CURB ELEVATION FOR EACH HOUSE LATERAL ON THE GRADE SHEET.



INDEX MAP
 SCALE 1" = 100'
 RC 4320
 P.C. 4320

NO CHARGE FOR CONNECTIONS

NO CHARGE FOR CONNECTIONS

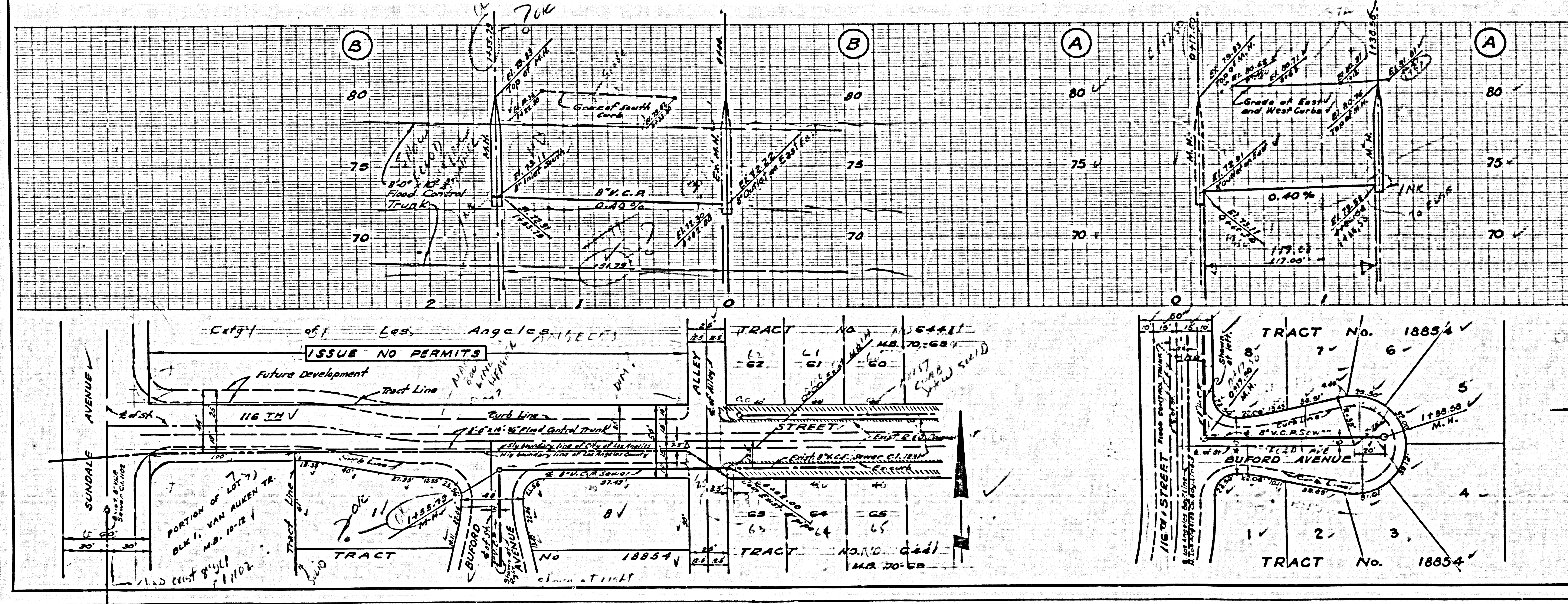
B.M. SX 3148 ELEV. 88.00 (1925)
 INGLEDWOOD AVE. 118 22' SE. COR.
 L.T. IN NW CORNER OF CONC. SLAB
 OF GAS STATION 2' 30" SW. OF 118 22'
 ST. 1' 55" R. OF E. INGLEDWOOD AVE.

APPROVED
 CITY OF LOS ANGELES
 (177) OF LOS ANGELES

NOTES:
 GRADES TO WHICH THIS IMPROVEMENT IS TO BE CONSTRUCTED ARE SHOWN ON PLANS AND PROFILES. GRADE POINTS FOR TOP OF CURBS, CENTER LINE OF STREETS, OR CENTER LINE OF ALLEYS ARE SHOWN BY CIRCLES ON PROFILES. AT ALL POINTS BETWEEN MANHOLE POINTS THE GRADE SHALL BE ESTABLISHED SO AS TO CONFORM TO A STRAIGHT LINE DRAWN BETWEEN SAID MANHOLE POINTS.
 REVISIONS ARE IN PENCIL ABOVE U.C.S.G.S. SET A LEVEL DATUM OF 1929.
 THE DRAWING AND THE DATA HEREON ARE HEREBY MADE A PART OF THE SPECIFICATIONS.
 WORK SHALL BE CONSTRUCTED ACCORDING TO SPECIFICATIONS ON FILE IN THE OFFICE OF THE COUNTY ENGINEER AND SHALL BE PROSECUTED ONLY IN THE PRESENCE OF THE COUNTY ENGINEER.
 BEFORE WORK CAN BE STARTED, THE CONTRACTOR MUST OBTAIN A PERMIT TO EXCAVATE IN COUNTY SHRETS FROM THE L. & COUNTY ROAD DEPT. 120 W. 5TH ST. AND MAKE A DEPOSIT WITH THE COUNTY ENGINEER ROOM 244 SAN AMERICAN BLDG. 100 S. 330 BROADWAY SUFFICIENT TO COVER THE COST OF CONSTRUCTION INSPECTION AND RECORD PLANS.
 APPROVAL OF THIS PLAN BY THE COUNTY OF LOS ANGELES DOES NOT CONSTITUTE A REPRESENTATION AS TO THE ACCURACY OF THE LOCATION OR THE EXISTENCE OR NON-EXISTENCE OF ANY UNDERGROUND UTILITY PIPE, OR STRUCTURE WITHIN THE LIMITS OF THIS PROJECT. THIS NOTE APPLIES TO ALL PAGES.
 IF WORK IS TO BE DONE IN A STATE HIGHWAY, A PERMIT MUST BE OBTAINED FROM THE STATE OF CALIFORNIA, DIVISION OF HIGHWAYS, 120 SOUTH SPRING STREET.

COUNTY OF LOS ANGELES, CALIFORNIA

APPROVED, JOHN A. LAMBE, COUNTY ENGINEER
 APPROVED, A. M. BAWN, CHIEF ENGINEER
 CO. SAN. REC. NO. 8-5
 BY _____ OFFICE ENGINEER
 CHECKED BY _____
 OFFICE OF COUNTY ENGINEER, S.B. C. & H.O.



NO CHARGE FOR CONNECTIONS

NO CHARGE FOR CONNECTIONS

