

**NOTE: PUENTE BLDG DIST N<sup>o</sup> 2**

Provide stakes on the property lines or property lines produced at right angles to the sewer line at the center line of each manhole.  
 No representative of the County Engineer will survey or layout any portion of the work.  
 The owner or his authorized representative shall furnish the County Engineer with grade sheets and stations for all house laterals and Y branches and shall provide stakes for them at their proper locations with stationing plainly marked. Any change in location shall be requested in writing by the owner or his representative.

- No revisions shall be made in these plans without the approval of the County Engineer.
1. Use standard manhole frames and covers, S-a-117.
  2. Use standard strength pipe except as noted.
  3. Use cement mortar for all vitrified clay pipe joints.
  4. Resurface all trench within paved area to meet L.A. County Road Dept. or California State Highway Dept. requirements in accordance with permit.
  5. Encase four feet of sewer at points of interference with poles, S-a-119.
  6. House laterals to be constructed with inverts at property line,  $\frac{1}{2}$  feet below curb grade, except as noted.
  7. All structures shall be brick sewer structures, S-a-104.
  8. For allowable leakage test, use Formula No. 1, Spec's, Sec. 54.
  9. Manhole tops in unimproved Rights-Of-Way to be 6" above finish grade.
  10. *The private engineer is to furnish the house lateral depth at the property line below the top of curb elevation for each house lateral, on the Grade Sheet.*

PROFILE, ALIGNMENT AND GRADE OF  
**SANITARY SEWERS**  
 TO BE CONSTRUCTED IN  
**TRACT N<sup>o</sup> 23619**

PC. 4324  
 Page 1

PRIVATE CONTRACT NO. 4324  
 W. S. 38  
 6 PAGES - 2 SHEETS

Scale: VERT. 1"=4'  
 HORIZ. 1"=40' FEB. 1957

PREPARED IN THE OFFICES OF  
**BARCLAY ENGINEERING CO**

*Edward L. Ransom*  
 Reg. C. E. No. 9783

FOR LEGEND SEE PLAN NO. S-a-64

**NOTE:**

Grades to which this improvement is to be constructed are shown on plans and profiles. Grade points for top of curbs, center line of streets, or center line of alleys are shown by circles on profiles. At all points between designated points the grade shall be established so as to conform to a straight line drawn between said designated points.

Elevations are in feet above U.S.C. & G.S. Sea Level Datum of 1929.

This drawing and the data hereon are hereby made a part of the specifications.

Work shall be constructed according to specifications on file in the office of the County Engineer and shall be prosecuted only in the presence of the County Engineer.

Before work can be started, the contractor must obtain a permit to excavate in County streets from the L.A. County Road Dept., 108 W. 2nd St. and make a deposit with the County Engineer.

Approval of this plan by the County of Los Angeles does not constitute a representation as to the accuracy of the location of or the existence or non-existence of any underground utility, pipe, or structure within the limits of this project. This note applies to all sheets.

If work is to be done in a State Highway, a permit must be obtained from the State of California, Division of Highways, 120 South Spring Street.

COUNTY OF LOS ANGELES, CALIFORNIA

Approved, John A. Lambie County Engineer

Approved, A. M. Rawm

*A. P. Collins*  
 Sanitation Engineer

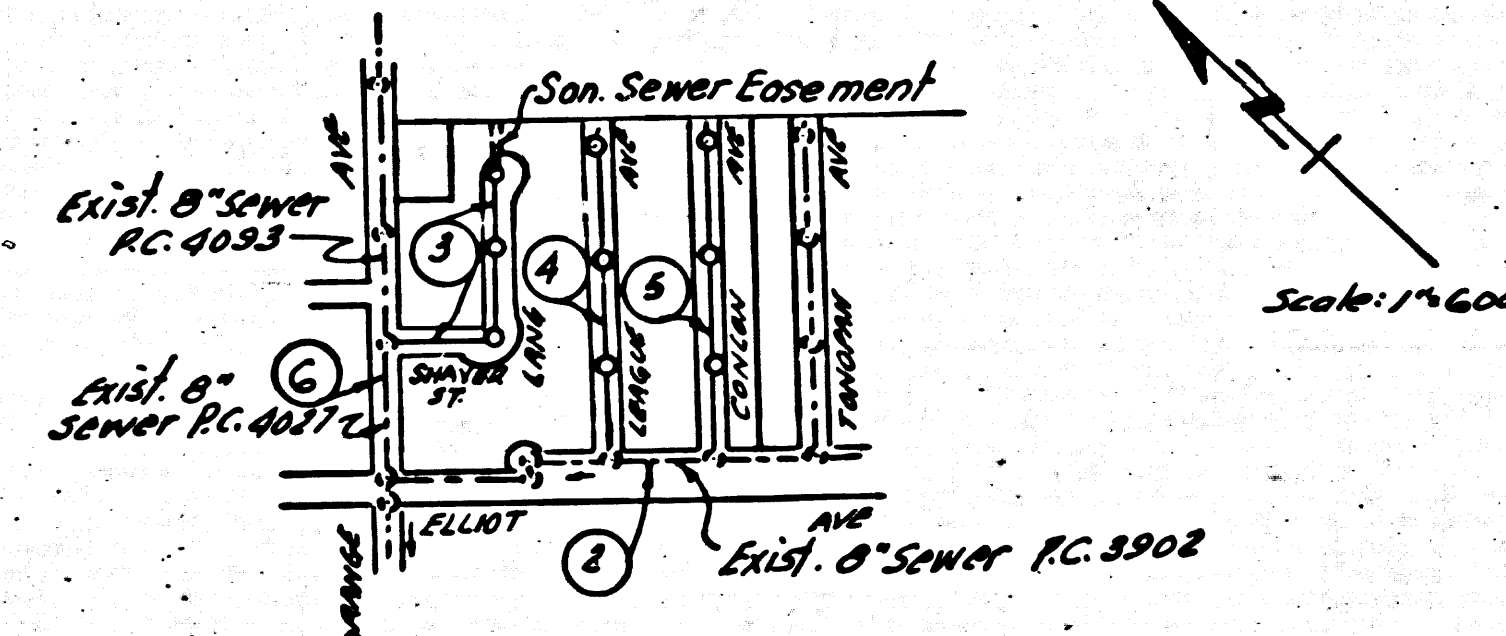
CHIEF ENGINEER, SAN. DIST. NO. 15  
*A. M. Rawm*  
 Office Engineer

Checked by: *S. C. Quide* 3-18-57

Office of County Engineer, Reg. C. E. No. 9406

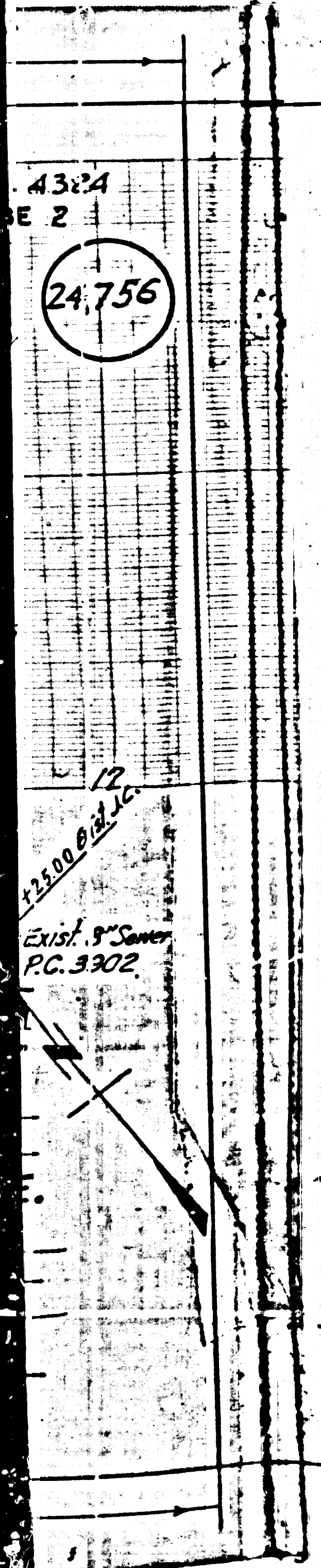
R.S.  
 3-18-57

B.M. S.G. 1101 E.I. 325.916 Lead & Hack in SW corner of conc. base of Water Pump 10' East of E. Sunset Ave & 1000' North of E. Elliot Ave.

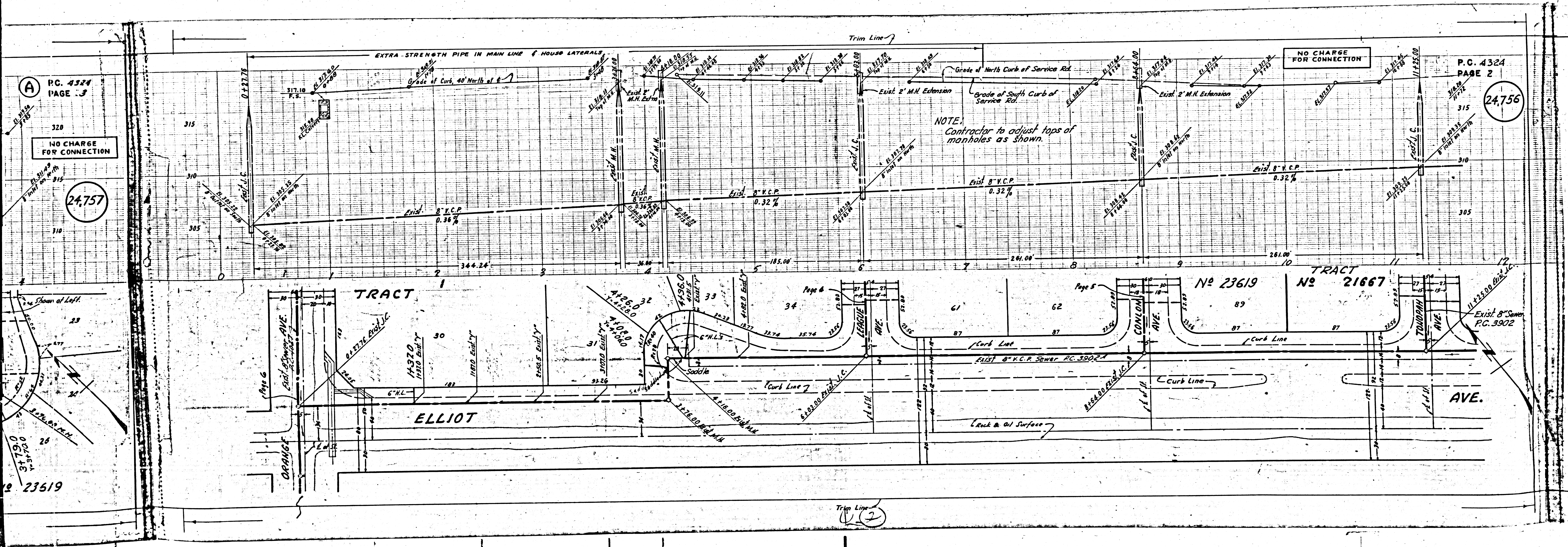


INDEX MAP  
 TRACT N<sup>o</sup> 23619  
 PC. 4324

NO CHARGE FOR CONNECTIONS  
 at Curbs 2-26-57



TRACT N<sup>o</sup> 23619  
 PC. 4324



P.C. 4324  
PAGE 3  
NO CHARGE  
FOR CONNECTION

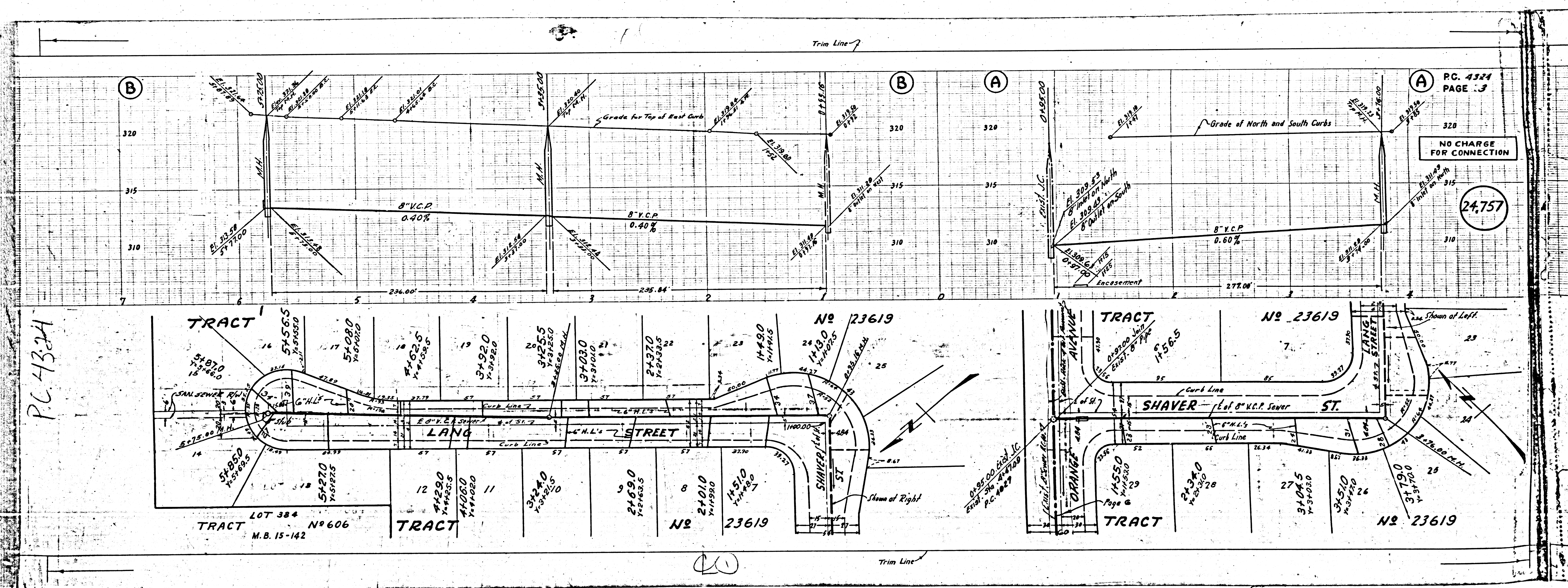
24,757

P.C. 4324  
PAGE 2

24,756

23519

EXIST. 8\"/>



P.C. 4324

PC. 4324  
PAGE 3

NO CHARGE  
FOR CONNECTION

24,757

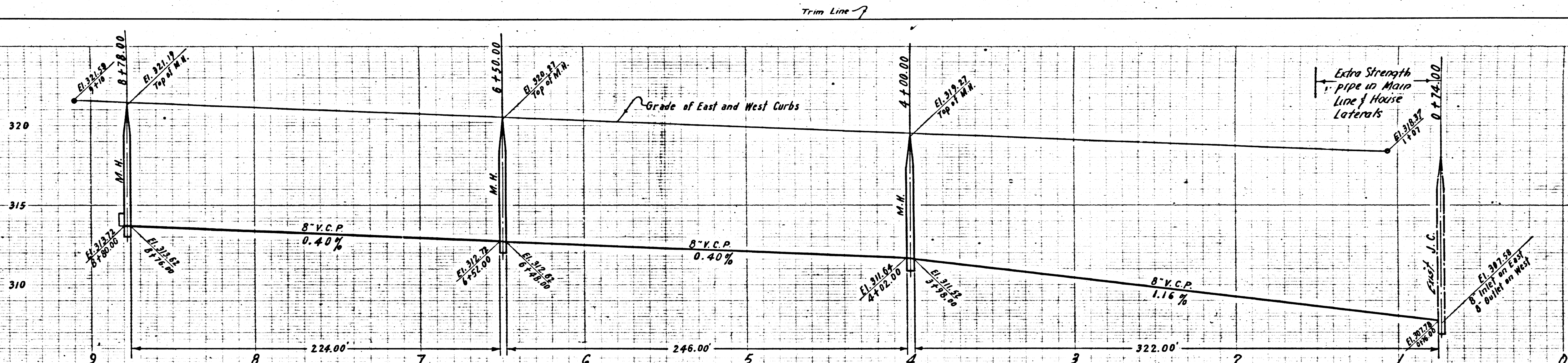
0.9500 Eof J.C.  
Elev. 306.47  
P.C. 1027

(2)

P.C. 4324  
PAGE 5

NO CHARGE  
FOR CONNECTION

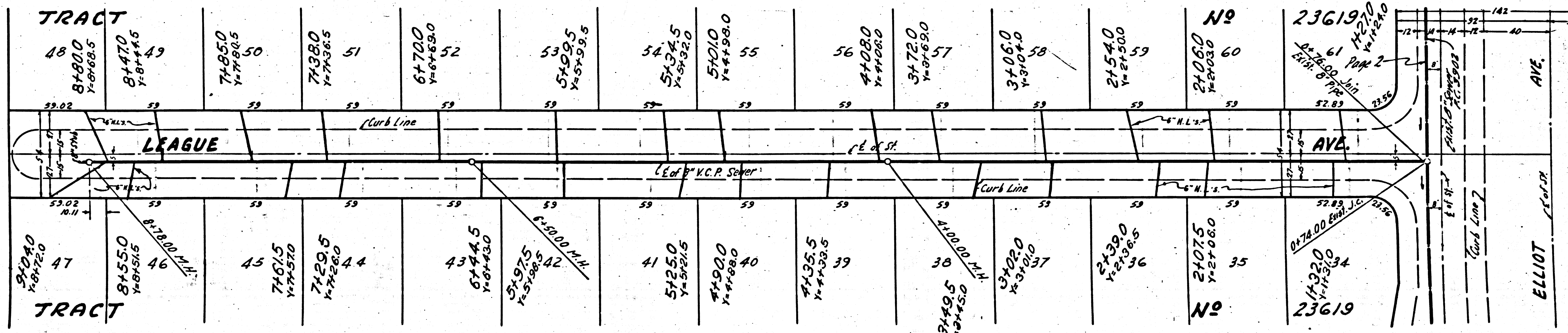
24,759



P.C. 4324  
PAGE 4  
SHEET 2

NO CHARGE  
FOR CONNECTION

24,758

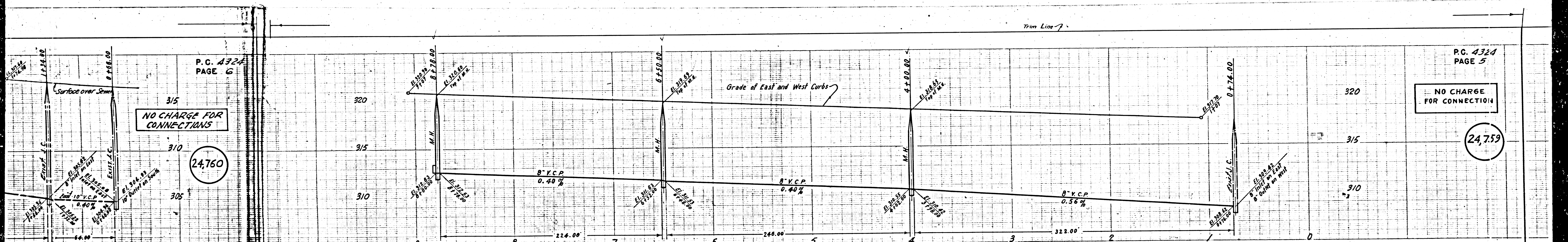


P.C. 4334  
SHEET 2

P.C. 4324  
PAGE 6

NO CHARGE FOR CONNECTIONS

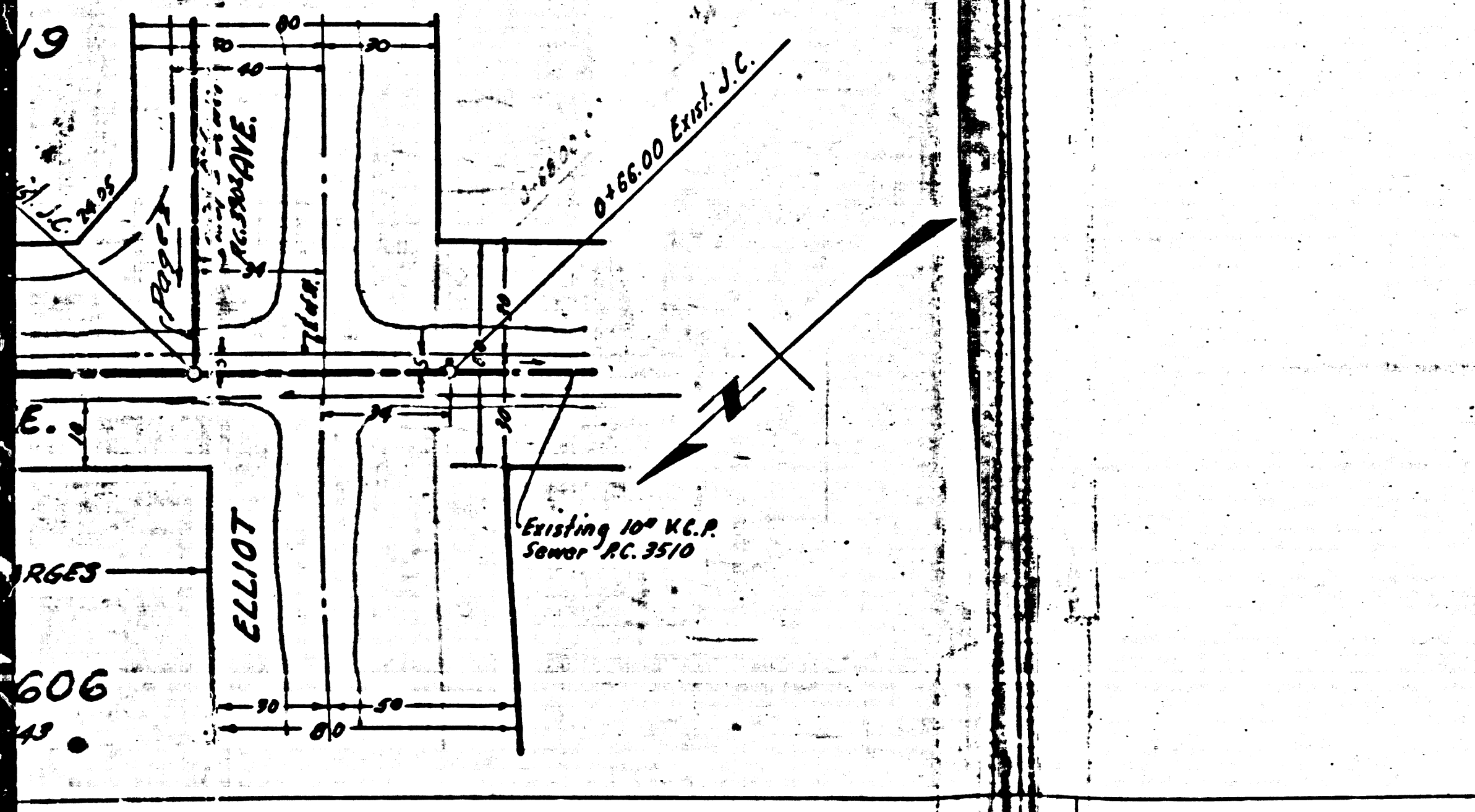
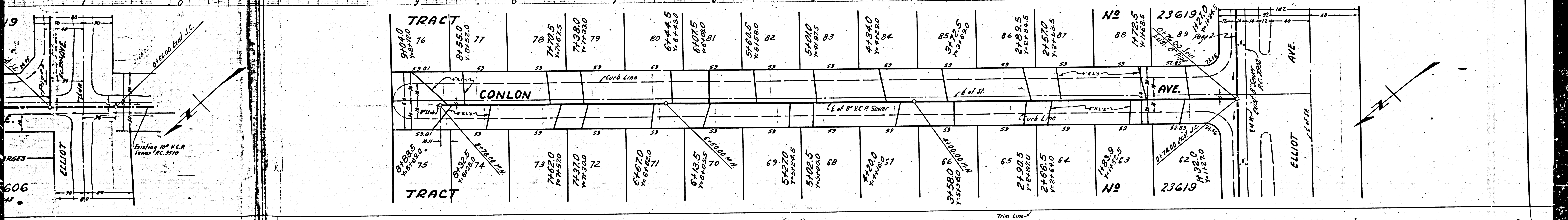
24,760



P.C. 4324  
PAGE 5

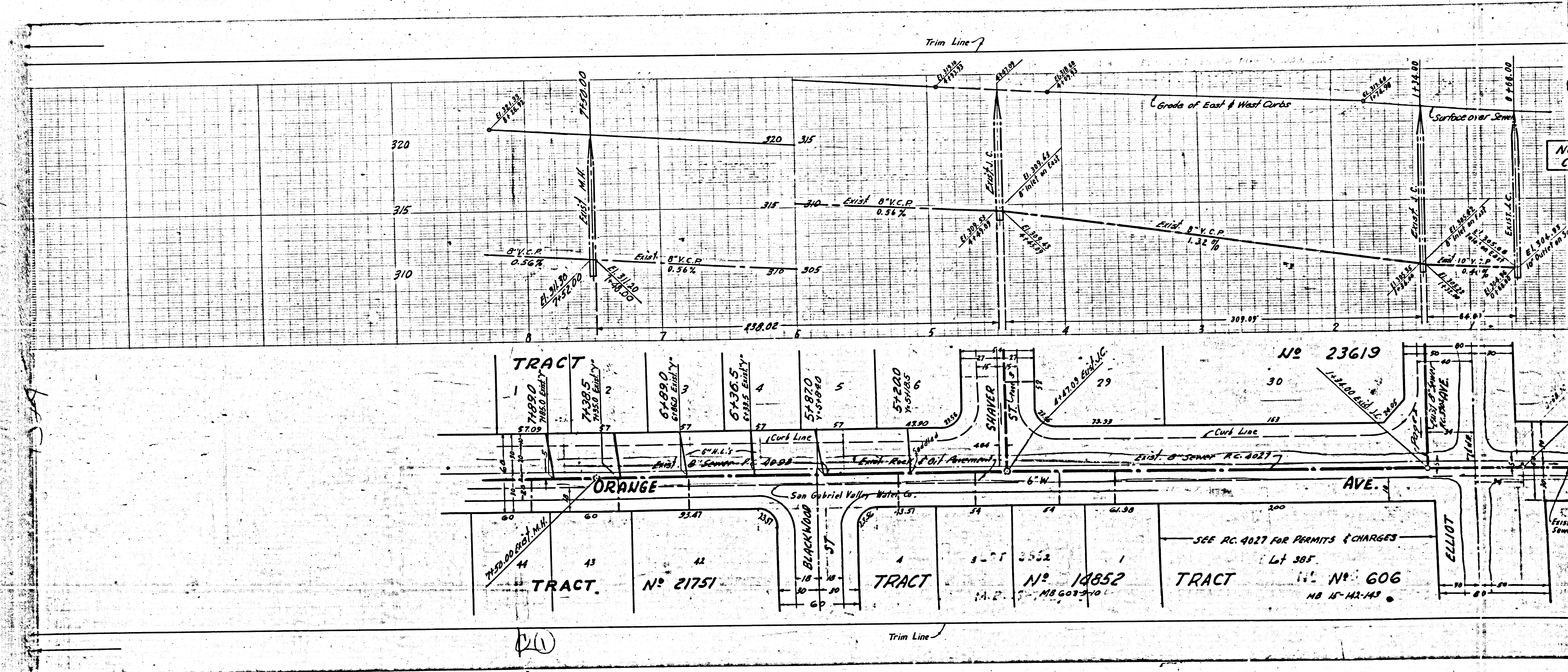
NO CHARGE FOR CONNECTIONS

24,759



606

Trim Line



20

SEE RC. 4027 FOR PERMITS & CHARGES  
 Lt 385  
 TRACT No. 606  
 NO. 15-142-143