

LANCASTER BLDG. DIST. NO. 8

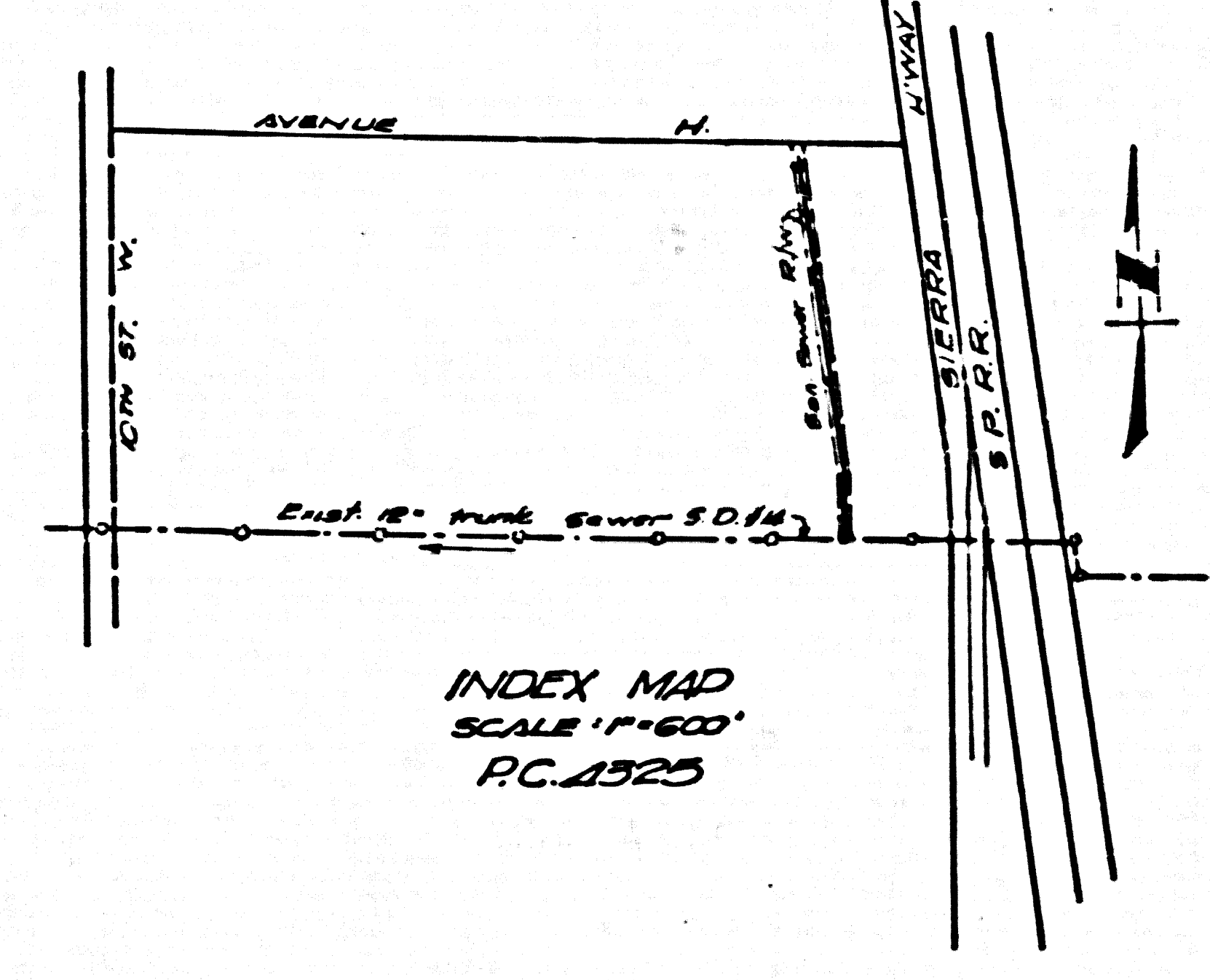
PROFILE ALIGNMENT AND GRADE OF P.C. 4325
 SANITARY SEWERS PAGE 1
 TO BE CONSTRUCTED IN
 A SANITARY SEWER RIGHT OF WAY
 WEST OF SIERRA HIGHWAY

B.M. U.S. 3172 U.S.C. 651.1941-El. 2333.30
 450' East of 33' North of E's of E
 174th St. West (N.V.E.I. A Standard
 Disk Stamped "C-306-1935"
 Set on top of Conc. Post.

- NOTES:
- PROVIDE STAKES ON THE PROPERTY LINE OR PROPERTY LINES PRODUCED AT RIGHT ANGLES TO THE SEWER LINE AT THE CENTER LINE OF EACH MANHOLE.
 - NO REPRESENTATIVE OF THE COUNTY ENGINEER WILL SURVEY OR LAYOUT ANY PORTION OF THE WORK.
 - THE OWNER OR HIS AUTHORIZED REPRESENTATIVE SHALL FURNISH THE COUNTY ENGINEER WITH GRASS SHEETS AND STATION FOR ALL HOUSE LATERALS AND Y BRANCHES AND SHALL BE RESPONSIBLE FOR THEM AT THEIR PROPER LOCATIONS WITH STATIONING PLAINLY MARKED. ANY CHANGE IN LOCATION SHALL BE REQUESTED IN WRITING BY THE OWNER OR HIS REPRESENTATIVE.
 - NO REVISIONS SHALL BE MADE IN THESE PLANS WITHOUT THE APPROVAL OF THE COUNTY ENGINEER.
 - USE STANDARD MANHOLE FRAMES AND COVERS, S.A-117, EXCEPT AS NOTED.
 - USE STANDARD STRENGTH PIPE EXCEPT AS NOTED.
 - USE CEMENT MORTAR FOR ALL VITRIFIED CLAY PIPE JOINTS.
 - RESURFACE ALL TRENCH WITHIN PAVED AREA TO MEET L.A. COUNTY ROAD DEPT., OR CALIF. STATE HIGHWAY DEPT. REQUIREMENTS IN ACCORDANCE WITH PERMITS.
 - ENCASE FOUR FEET OF SEWER AT POINTS OF INTERFERENCE WITH POLES, S.A-119.
 - HOUSE LATERALS TO BE CONSTRUCTED WITH INVERTS AT PROPERTY LINES. SEE SHOW-GRADE SHEET EXCEPT AS NOTED.
 - ALL STRUCTURES SHALL BE BRICK SEWER STRUCTURES, S.A-104, EXCEPT AS NOTED.
 - FOR ALLOWABLE LEAKAGE TEST USE FORMULA NO. 1 SPEC. SEC. 2.
 - MANHOLE TOPS IN UNIMPROVED RIGHTS-OF-WAY TO BE 6" ABOVE FINISHED GRADE.
 - CALL ALL PIPE JOINTS WITH A" CEMENT MORTAR THAT ARE WITHIN 25' OF ALL PROPERTY LINES OF A SANITARY SEWER R/W'S.

Before breaking into any existing structure
 and before final acceptance of this work,
 County Sanitation District should be notified
 in order that required inspection may be made.

NO CHARGE FOR
 CONNECTIONS
 J. Curlier 3-26-57



PRIVATE CONTRACT NO. 4325
 W.S. 70
 2 SHEETS, 3 PAGES (24,992)
 SCALE: VERT. 1"=6' HORIZ. 1"=60' Jan, 1957
 PREPARED BY THE OFFICES OF
 Ralph B. Nunnally

FOR LEGEND SEE PLAN NO. S.A-64

NOTES:
 GRADE TO WHICH THIS IMPROVEMENT IS TO BE CONSTRUCTED ARE SHOWN ON PLANS AND PROFILES. GRADE POINTS FOR TOP OF CURB, CENTER LINE OF STREET, OR CENTER LINE OF ALLEYS ARE SHOWN BY CIRCLES ON PLANS AT ALL POINTS BETWEEN NEIGHBORLY POINTS THE GRADE SHALL BE ESTABLISHED SO AS TO CONFORM TO A STRAIGHT LINE BETWEEN SAID DESIGNATED POINTS.
 ELEVATIONS ARE IN FEET ABOVE U.S.C. & G.S. MEAN SEA LEVEL DATUM OF 1929.
 THIS DRAWING AND THE DATA HEREON ARE HEREBY MADE A PART OF THE SPECIFICATIONS.
 WORK SHALL BE CONSTRUCTED ACCORDING TO SPECIFICATIONS ON FILE IN THE OFFICE OF THE COUNTY ENGINEER AND SHALL BE PROSECUTED ON-LET IN THE PRESENCE OF THE COUNTY ENGINEER.
 BEFORE WORK CAN BE STARTED, THE CONTRACTOR MUST OBTAIN A PERMIT TO EXCAVATE IN COUNTY STREETS FROM THE L.A. COUNTY ROAD DEPT., 188 W. 10th ST. AND MAKE A DEPOSIT WITH THE COUNTY ENGINEER, ROOM 254 PAN AMERICAN BUILDING, 215 1/2 BROADWAY SUFFICIENT TO COVER THE COSTS OF CONSTRUCTION INSPECTION AND RECORD PLANS.
 APPROVAL OF THIS PLAN BY THE COUNTY OF LOS ANGELES DOES NOT CONSTITUTE A REPRESENTATION AS TO THE ACCURACY OF THE LOCATION OR THE EXISTENCE OR NON-EXISTENCE OF ANY UNDERGROUND UTILITY PIPE, OR STRUCTURE WITHIN THE LIMITS OF THE PROJECT THIS NOTE APPLIES TO ALL PAGES.
 IF WORK IS TO BE DONE IN A STATE HIGHWAY, A PERMIT MUST BE OBTAINED FROM THE STATE OF CALIFORNIA, DIVISION OF HIGHWAYS, 126 SOUTH SPRING STREET.

COUNTY OF LOS ANGELES, CALIFORNIA

APPROVED, JOHN A. LAMBE, COUNTY ENGINEER
 APPROVED, A. M. RAWN, CHIEF ENGINEER
 BY: *A.P. Collins* (SANITATION ENGINEER) BY: *J. Curlier* (OFFICE ENGINEER)
 CHECKED BY: *W.C. Deane* 4-1-57
 OFFICE OF COUNTY ENGINEER, BOX C & NO. 9466

APPROVED, INDUSTRIAL WASTE DIVISION
 BY: *Arthur Pickett*

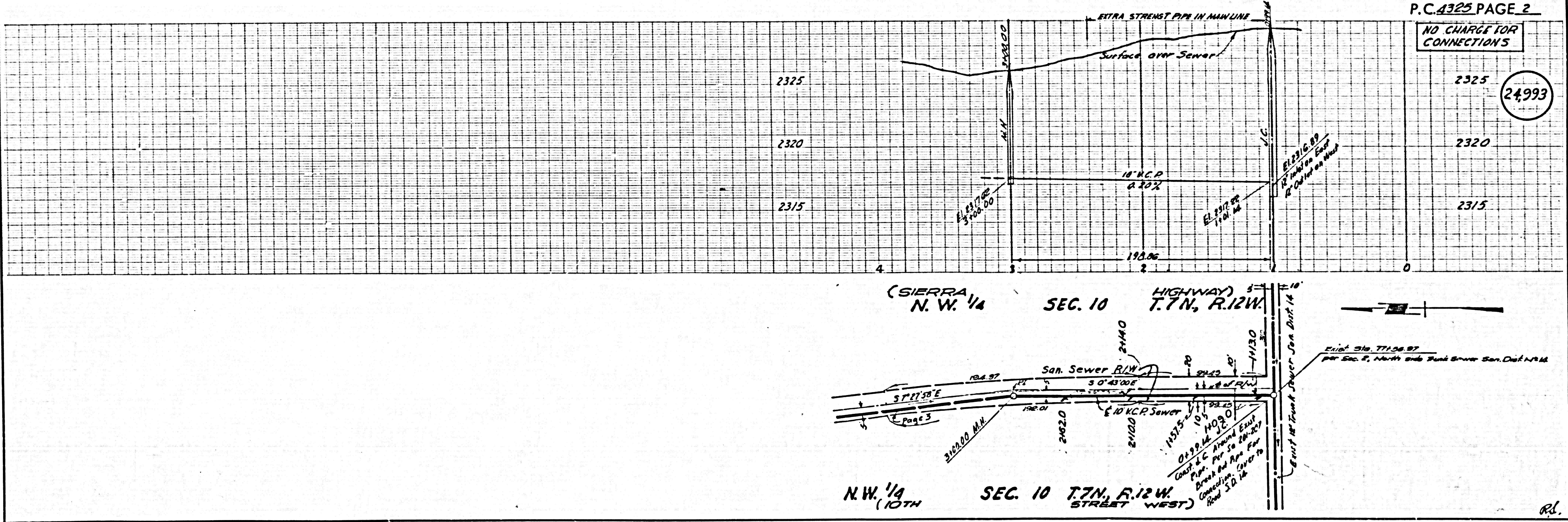
P.C. 4325

P.C. 4325

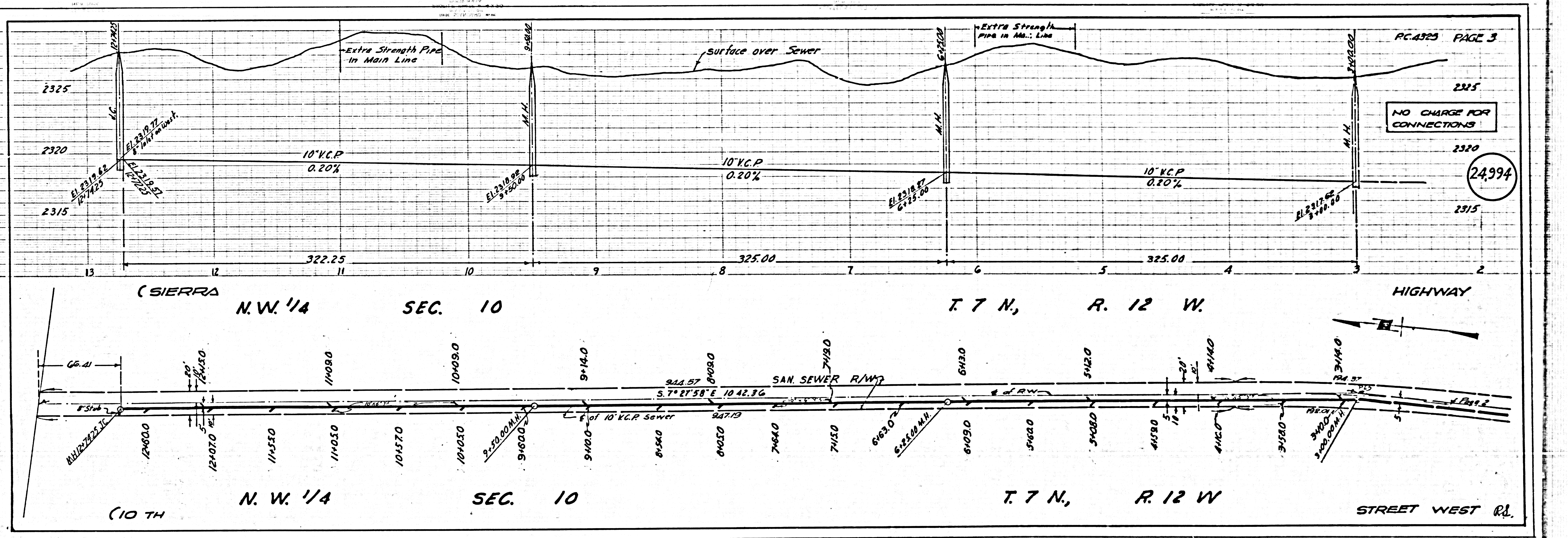
P.C. 4325 PAGE 2

NO CHARGE FOR CONNECTIONS

(24,993)



RL



PC.4325 PAGE 3

NO CHARGE FOR CONNECTIONS

24,994