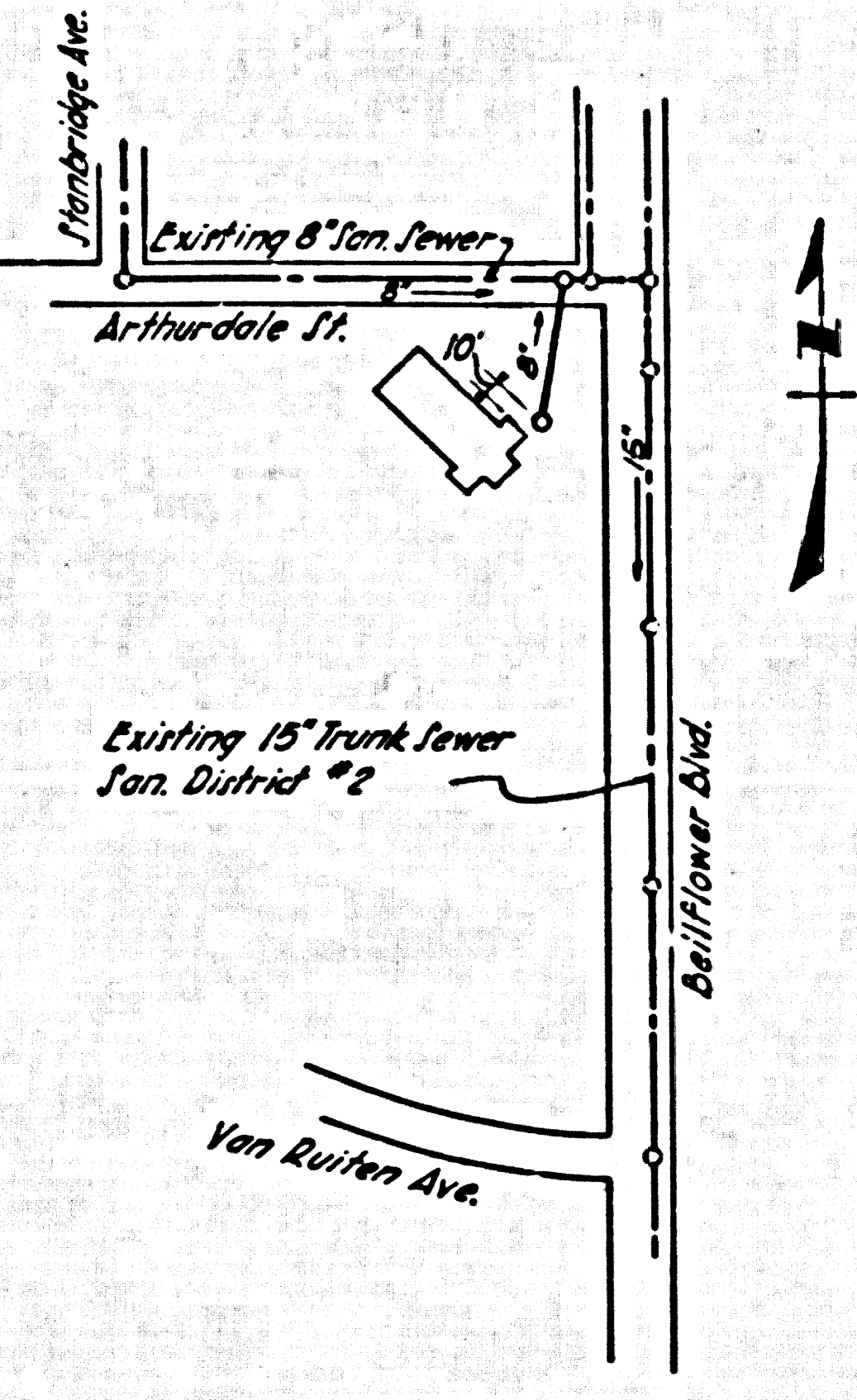


B.M. Road Dept. 49 398 E1 92.6
 Ardis Ave. & Imperial Hwy. J.E. Cor.
 L&T East Curb 100' South of Imperial Hwy.

NO CHARGE FOR CONNECTIONS
 SK Under 2-7-57



INDEX MAP
 Scale 1"=300'
 P.C. 4328

BELFLOWER BLDG. DIST. NO. 4

- NOTES
- PROFILES SHOWN ON THE PROPERTY LINE OR PROPERTY LINES PRODUCED AT RIGHT ANGLES TO THE SEWER LINE AT THE CENTER LINE OF EACH MANHOLE.
 - NO REPRESENTATIVE OF THE COUNTY ENGINEER WILL SURVEY OR LAYOUT ANY PORTION OF THE WORK.
 - THE OWNER OR HIS AUTHORIZED REPRESENTATIVE SHALL FURNISH THE COUNTY ENGINEER WITH GRADE SHEETS AND STATIONING FOR ALL HOUSE LATERALS AND Y BRANCHES AND SHALL PROVIDE STAKES FOR THEM AT THEIR PROPER LOCATIONS WITH STATIONING PLAINLY MARKED. ANY CHANGE IN LOCATION SHALL BE REQUESTED BY WRITING BY THE OWNER OR HIS REPRESENTATIVE.
 - NO REVISIONS SHALL BE MADE IN THESE PLANS WITHOUT THE APPROVAL OF THE COUNTY ENGINEER.
 - USE STANDARD MANHOLE FRAMES AND COVERS, S.A.-117, EXCEPT AS NOTED.
 - USE STANDARD STRENGTH PIPE EXCEPT AS NOTED.
 - USE CEMENT MORTAR FOR ALL VITRIFIED CLAY PIPE JOINTS.
 - RESURFACE ALL TRENCH WITHIN PAVED AREA TO MEET L. A. COUNTY ROAD DEPT. OR CALIF. STATE HIGHWAY DEPT. SPECIFICATIONS IN ACCORDANCE WITH PERMITS.
 - ENCASE FOUR FEET OF SEWER AT POINTS OF INTERFERENCE WITH POLES, S.A.-119.
 - ALL STRUCTURES SHALL BE BRICK SEWER STRUCTURES, S.A.-104, EXCEPT AS NOTED.
 - FOR ALLOWABLE LEAKAGE TEST USE FORMULA NO. 1 SPEC'S, SEC. 51.
 - MANHOLE TOPS IN UNIMPROVED RIGHTS-OF-WAY TO BE 6" ABOVE FINISHED GRADE.

APPROVED, INDUSTRIAL WASTE DIVISION
 By Arthur Pachter

PROFILE ALIGNMENT AND GRADE OF P.C. 4328
 SANITARY SEWERS PAGE 1

TO BE CONSTRUCTED FOR
 CAUGHREN PARK 24,596

PRIVATE CONTRACT NO. 4328

W.S. 33
 1 SHEET, 2 PAGES

SCALE: HORIZ. 1"=60' VERT. 1"=6'
 FEB, 1957
 PREPARED IN THE OFFICES OF

Charley C. Curtis
 REG. C. E. NO. 7111

FOR LEGEND SEE PLAN NO. S-A-64

NOTES

GRADES TO WHICH THE IMPROVEMENT IS TO BE CONSTRUCTED ARE SHOWN ON PLANS AND PROFILE. GRADE POINTS FOR TOP OF CURBS, CENTER LINE OF STREETS OR ALLEYS ARE SHOWN BY CIRCLES ON PROFILES. AT ALL POINTS BETWEEN DESIGNATED POINTS THE GRADE SHALL BE ESTABLISHED SO AS TO CONFORM TO A STRAIGHT LINE DRAWN BETWEEN SAID DESIGNATED POINTS.

ELEVATIONS ARE IN FEET ABOVE U.S.C. & G.S. SEE LIST OF DATA ON P. 199.

10" V. BELLOWING AND 7 1/2" DATA WISCONSIN ARE HEREBY MADE A PART OF THE SPECIFICATIONS.

WORK SHALL BE CONSTRUCTED ACCORDING TO SPECIFICATIONS ON FILE IN THE OFFICE OF THE COUNTY ENGINEER AND SHALL BE INSPECTED ONLY IN THE PRESENCE OF THE COUNTY ENGINEER.

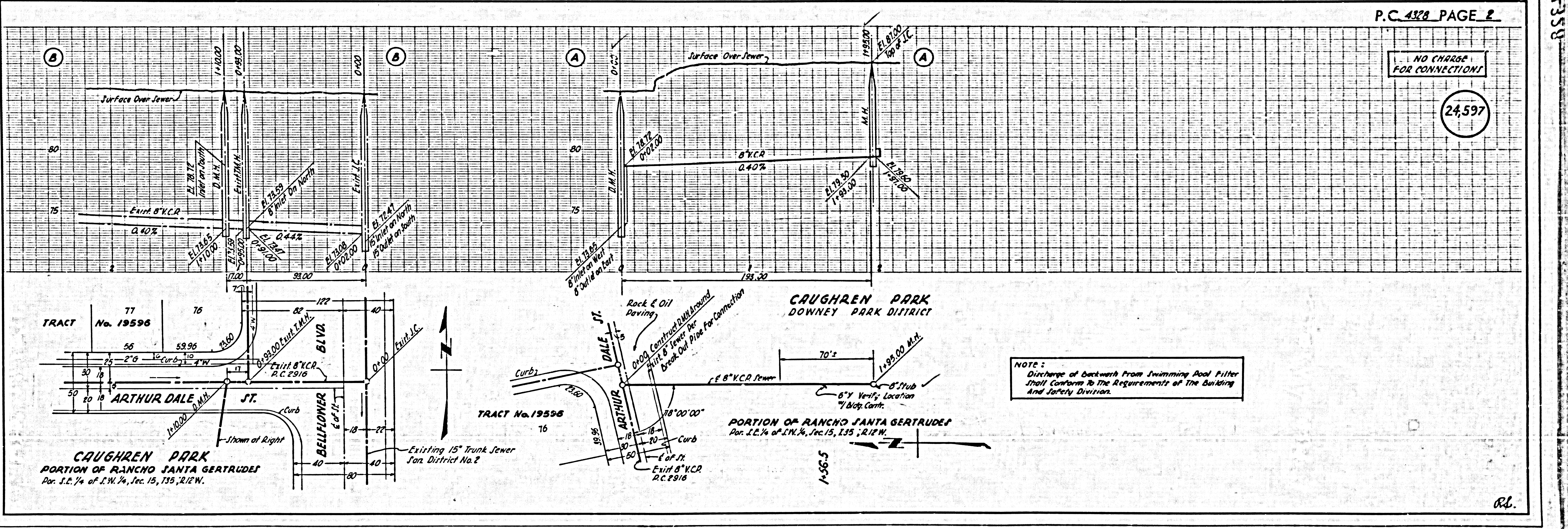
BEFORE WORK CAN BE STARTED, THE CONTRACTOR MUST OBTAIN A PERMIT TO EXCAVATE IN COUNTY STREETS FROM THE L. A. COUNTY ROAD DEPT., 188 1/2 2ND ST. AND MAKE A REPORT WITH THE COUNTY ENGINEER, 2200 N. PINE AVE. AMERICAN BUILDING, 238 1/2 BROADWAY. SUFFICIENT TO COVER THE COST OF CONSTRUCTION INSPECTION AND SECOND PLANS.

APPROVAL OF THIS PLAN BY THE COUNTY OF LOS ANGELES DOES NOT CONSTITUTE A REPRESENTATION AS TO THE ACCURACY OF THE LOCATION OF OR THE EXISTENCE OR NON-EXISTENCE OF ANY UNDERGROUND UTILITY PIPES OR STRUCTURES WITHIN THE LIMITS OF THIS PROJECT. THIS NOTE APPLIES TO ALL PAGES.

IF WORK IS TO BE DONE BY A STATE HIGHWAY, A PERMIT MUST BE OBTAINED FROM THE STATE OF CALIFORNIA, DIVISION OF HIGHWAYS, 120 SOUTH SPRING STREET.

COUNTY OF LOS ANGELES, CALIFORNIA

APPROVED, JOHN A. LAMBE, COUNTY ENGINEER
 APPROVED, A. M. BAWN, CHIEF ENGINEER
 BY [Signature] [Signature]
 SANITATION ENGINEER OFFICE ENGINEER
 CHECKED BY SK Under 2-7-57
 OFFICE OF COUNTY ENGINEER, 220 N. E. ST. NO. 2400



NO CHARGE FOR CONNECTIONS

24,597

NOTE: Discharge of backwash from Swimming Pool Filter shall conform to the requirements of the Building and Safety Division.

CAUGHREN PARK
 PORTION OF RANCHO SANTA GERTRUDES
 Par. S.E. 1/4 of S.W. 1/4, Sec. 15, T.35, R.12 W.

Existing 15" Trunk Sewer
 San. District No. 2

PORTION OF RANCHO SANTA GERTRUDES
 Par. S.E. 1/4 of S.W. 1/4, Sec. 15, T.35, R.12 W.

P.C. 4328

rl.