

TEMPLE CITY BLDG. DIST. NO. 5

B.M. T.E. TO C.S.F.B. 1489-44 Elev 356.381
 Northeast Corner Olive St. & Cloverly
 Avenue 34' Side, 17' Curb, 7' North
 of North and Curb Return

- NOTES:
- PROVIDE STAKES ON THE PROPERTY LINE OR PROPERTY LINES PRODUCED AT RIGHT ANGLES TO THE SEWER LINE AT THE CENTER LINE OF EACH MANHOLE.
 - NO REPRESENTATIVE OF THE COUNTY ENGINEER WILL SURVEY OR LAYOUT ANY PORTION OF THE WORK.
 - THE OWNER OR HIS AUTHORIZED REPRESENTATIVE SHALL FURNISH THE COUNTY ENGINEER WITH GRAB SHEETS AND STATION PLUG ALL HOUSE LATERALS AND Y BRANCHES AND SHALL PROVIDE STAKES FOR THEM AT THEIR P.C.'S LOCATIONS WITH STATIONING PLAINLY MARKED. ANY CHANGE IN LOCATION SHALL BE REQUESTED IN WRITING BY THE OWNER OR HIS REPRESENTATIVE.
 - NO REVISIONS SHALL BE MADE IN THESE PLANS WITHOUT THE APPROVAL OF THE COUNTY ENGINEER.
 - USE STANDARD MANHOLE FRAMES AND COVERS, 6-A-117, EXCEPT AS NOTED.
 - USE STANDARD STRENGTH PIPE EXCEPT AS NOTED.
 - USE CHAMFERED ENDS FOR ALL VITRIFIED CLAY PIPE JOINTS.
 - RESURFACE ALL TERRACE WITHIN PAVED AREA TO MEET L. A. COUNTY ROAD DEPT. OR CALIF. STATE HIGHWAY DEPT. REQUIREMENTS IN ACCORDANCE WITH PERMITS.
 - ENCASE FOUR FEET OF SEWER AT POINTS OF INTERFERENCE WITH POLES, 6-A-119.
 - HOUSE LATERALS TO BE CONSTRUCTED WITH INVERTS AT PROPERTY LINE 6" FEET BELOW CURB GRADE EXCEPT AS NOTED.
 - ALL STRUCTURES SHALL BE BRICK SEWER STRUCTURES, 6-A-104, EXCEPT AS NOTED.
 - FOR ALLOWABLE BRACKLE TEST USE FORMULA NO. 1 SPEC'L. SEC. 26
 - MANHOLE TOPS IN UNIMPROVED RIGHTS-OF-WAY TO BE 6" ABOVE FINISHED GRADE.
 - THE PRIVATE ENGINEER IS TO FURNISH THE HOUSE LATERAL DEPTH AT THE PROPERTY LINE BELOW TOP OF CURB ELEVATION FOR EACH HOUSE LATERAL ON THE GRADE SHEET.

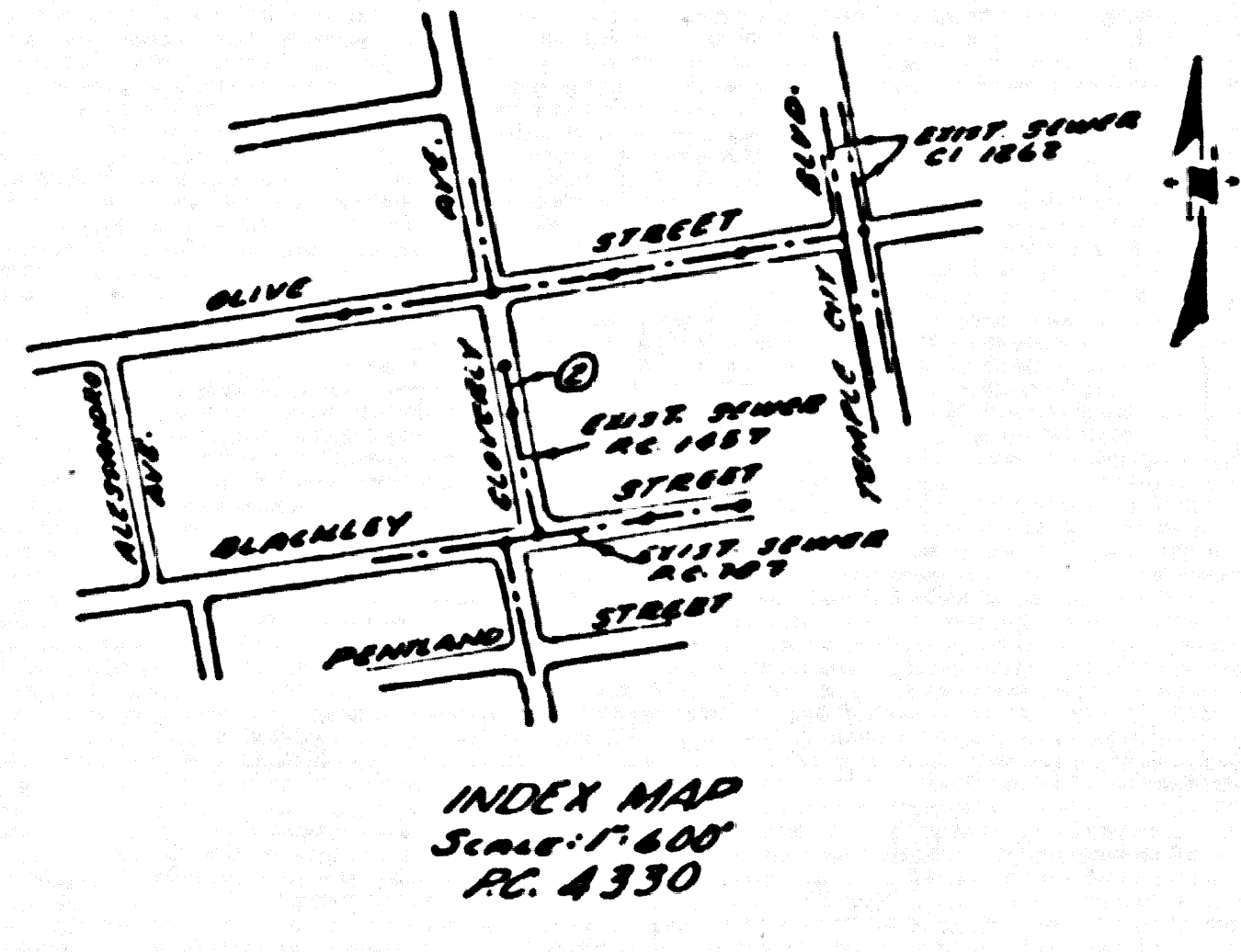
PROFILE ALIGNMENT AND GRADE OF P.C. 4330
 SANITARY SEWERS PAGE 1
 TO BE CONSTRUCTED IN
 CLOVERLY AVENUE EXT.
 SOUTHERLY OF OLIVE STREET

PRIVATE CONTRACT NO. 4330
 W.S. 44
 1 SHEET, 2 PAGES (24,301)
 SCALE: VERT. 1" = 4' HORIZ. 1" = 40'
 JANUARY, 1957
 PREPARED IN THE OFFICES OF
 M.W. FINLEY CO. (2)

By Leon W. Moore
 REG. C. E. NO. 3137

FOR LEGEND SEE PLAN NO. 5-A-64

CONNECTION CHARGES AS INDICATED
 T. J. G. January 2-28-57



NOTES:
 GRADES TO WHICH THIS IMPROVEMENT IS TO BE CONSTRUCTED ARE SHOWN ON PLANS AND PROFILES. GRADE POINTS FOR TOP OF CURB, CENTER LINE OF STREET, OR CENTER LINE OF ALLEY ARE SHOWN BY CIRCLES ON PROFILES. AT ALL POINTS BETWEEN INDICATED POINTS THE GRADE SHALL BE ESTABLISHED SO AS TO CONFORM TO A STRAIGHT LINE DRAWN BETWEEN SAID INDICATED POINTS.
 ELEVATIONS ARE IN FEET ABOVE U.S.C. & G.S. MEAN SEA LEVEL DATUM OF 1929.
 THIS DRAWING AND THE DATA HEREON ARE HEREBY MADE A PART OF THE SPECIFICATIONS.
 WORK SHALL BE CONSTRUCTED ACCORDING TO SPECIFICATIONS ON FILE IN THE OFFICE OF THE COUNTY ENGINEER AND SHALL BE PROSECUTED ONLY IN THE PRESENCE OF THE COUNTY ENGINEER.
 BEFORE WORK CAN BE STARTED, THE CONTRACTOR MUST OBTAIN A PERMIT TO EXCAVATE IN COUNTY STREETS FROM THE L. A. COUNTY ROAD DEPT., 188 W. 2ND ST., AND MAKE A REPORT WITH THE COUNTY ENGINEER, ROOM 324 PAN AMERICAN BUILDING, 218 SO. BROADWAY SUBJECT TO THE COST OF CONSTRUCTION INSPECTION AND RECORD PLANS.
 APPROVAL OF THIS PLAN BY THE COUNTY OF LOS ANGELES DOES NOT CONSTITUTE A REPRESENTATION AS TO THE ACCURACY OF THE LOCATION OF OR THE EXISTENCE OR NON-EXISTENCE OF ANY UNRECORDED UTILITY PIPES OR STRUCTURE WITHIN THE LIMITS OF THIS PROJECT. THIS NOTE APPLIES TO ALL PAGES.
 IF WORK IS TO BE DONE ON A STATE HIGHWAY, A PERMIT MUST BE OBTAINED FROM THE STATE OF CALIFORNIA, DIVISION OF HIGHWAYS, 120 SOUTH SPRING STREET.

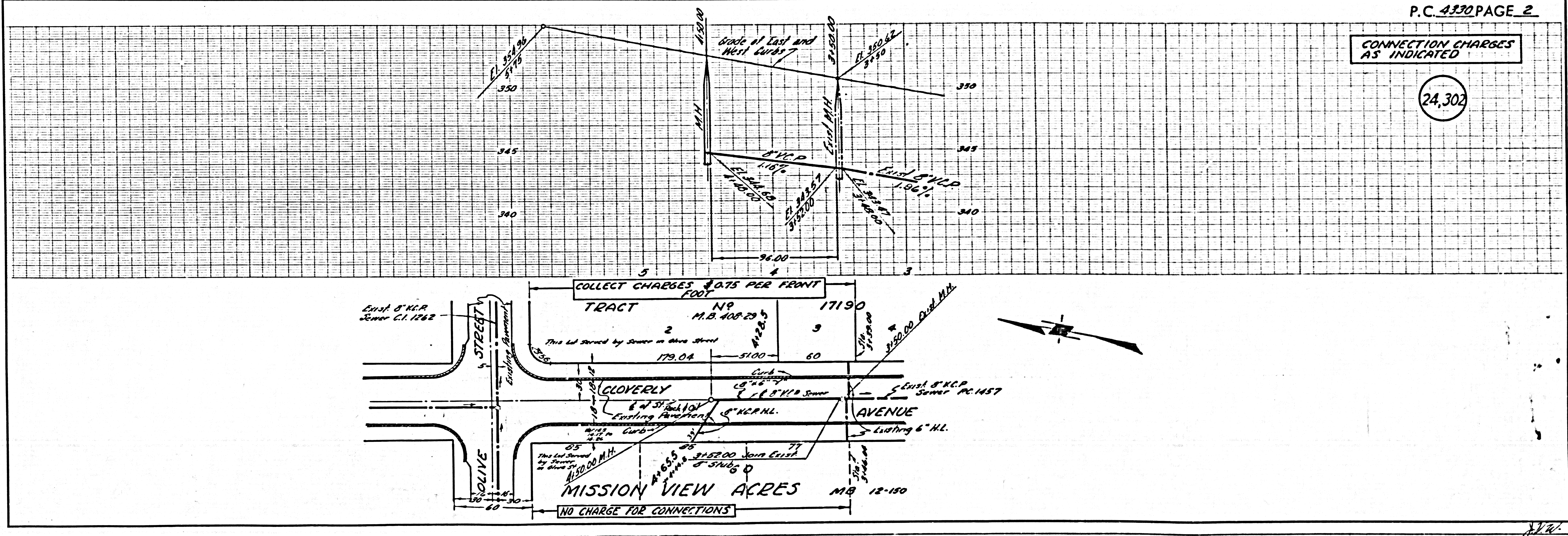
COUNTY OF LOS ANGELES, CALIFORNIA

APPROVED, JOHN A. LAMBE, COUNTY ENGINEER
 APPROVED, A. M. BAWN, CHIEF ENGINEER
 BY A. P. Collins BY A. M. Bawn
 SANITATION ENGINEER OFFICE ENGINEER
 CHECKED BY J. K. Quade
 OFFICE OF COUNTY ENGINEER, REG. C. E. NO. 9484

P.C. 4330 PAGE 2

CONNECTION CHARGES AS INDICATED

(24,302)



P.C. 4330